

**Kaideruisa
Y95 Mechanical
Keyboard**



Kaideruisa Y95 Mechanical Keyboard User Manual

[Home](#) » [Kaideruisa](#) » Kaideruisa Y95 Mechanical Keyboard User Manual 

Contents

- 1 Kaideruisa Y95 Mechanical Keyboard
- 2 Product Information
- 3 Product Usage Instructions
- 4 Product Function Description
- 5 Wired connection mode
- 6 2.4G connection mode
- 7 Bluetooth connection mode
- 8 Backlight mode adjustment
- 9 Backlight effect shortcut key adjustment
- 10 Adjustment of side RGB decorative lights
- 11 Other FN shortcut key instructions
- 12 Intelligent Sleep Mode Description
- 13 Charging instructions
- 14 Product Parameters
- 15 Warranty matters
- 16 Display screen function operation
- 17 Documents / Resources
 - 17.1 References

Kaideruisa

Kaideruisa Y95 Mechanical Keyboard



Product Information

The VTFSTNBOVBM is a versatile and powerful device designed to simplify your daily tasks. With its innovative features and robust construction, this product is built to last and provide reliable performance.

Specifications:

- **Model:** VTFSTNBOVBM
- **Power:** 65W
- **Voltage:** 220V
- **Frequency:** 50Hz

Product Usage Instructions

1. Initial Setup:

Before using the product for the first time, carefully unpack it and ensure all components are included. Place the device on a stable surface and plug it into a suitable power outlet.

2. Operating the Device:

To turn on the device, locate the power button and press it. Use the control panel to adjust settings according to your requirements. Refer to the user manual for specific instructions on different functions.

3. Safety Precautions:

Ensure the device is used in a well-ventilated area and away from water or other liquids. Do not attempt to disassemble or repair the product yourself. Unplug the device when not in use.

Frequently Asked Questions (FAQ):

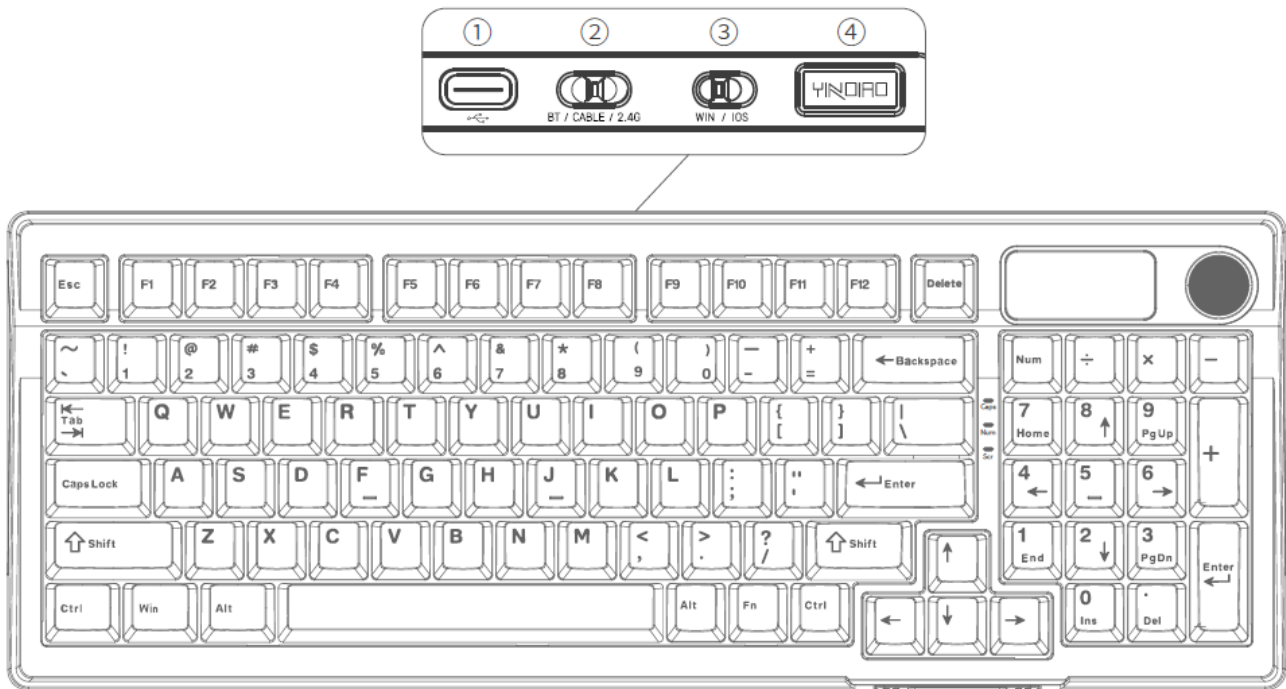
• **Q: How do I clean the product?**

A: To clean the product, unplug it and use a soft, damp cloth to wipe the exterior surfaces. Avoid using harsh chemicals or abrasive materials that may damage the device.

• **Q: What should I do if the device malfunctions?**

A: If you encounter any issues with the product's performance, refer to the troubleshooting section in the user manual. If problems persist, contact customer support for assistance.

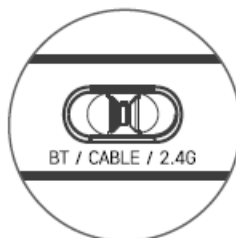
Product Function Description



1. Type-C interface
2. Mode switch: Bluetooth/wired/2.4G
3. Mac system switching/Win system
4. Receiver storage compartment

Wired connection mode

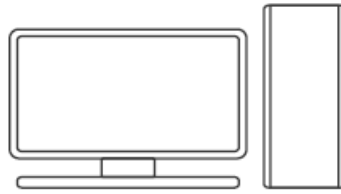
1. Switch to Wired CABLE mode



2. Install the standard USB cable Type-C Insert one end into the corresponding interface of the keyboard

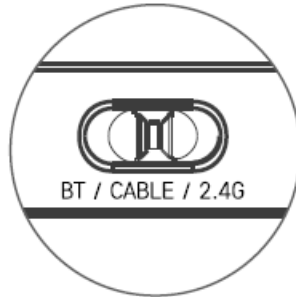


3. Insert one end of the cable USB head into the cable The USB port of the computer host is sufficient



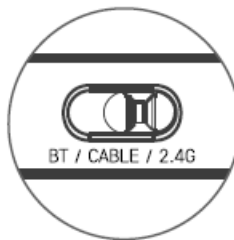
Keyboard on/off

Move the switch to the wired position, and the internal battery will stop supplying power (it will be in a shutdown state)



2.4G connection mode

1. Switch to [2.4G] mode



2. Remove the USB connector from the slot Receiver



3. Insert the receiver into the computer hostThe USB port can be used



- **Bluetooth the third mock examination high configuration color screen version manual 2.4G code matching:**

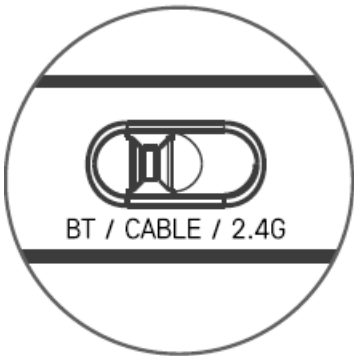
Long press the combination key “FN+R” for about 5 seconds, and the color screen will display “2.4G pairing in progress”. Connect to Insert the receiver into the computer USB port, and it will display “2.4G connection successful”.

- **Bluetooth the third mock examination standard digital tube screen version manual 2.4G code matching:**

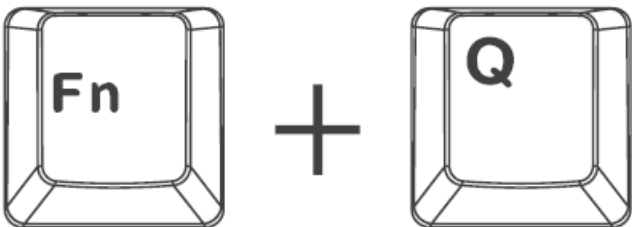
Press and hold the combination key “FN+R” for about 5 seconds, and the green light on the R key will flash quickly. At this time, Insert the receiver into the computer USB port, the green light will light up for 3 seconds, and the 2.4G connection is successful.

Bluetooth connection mode

1. Switch to BT mode Digital tube version: Mode light Q/W/E flashing slowly



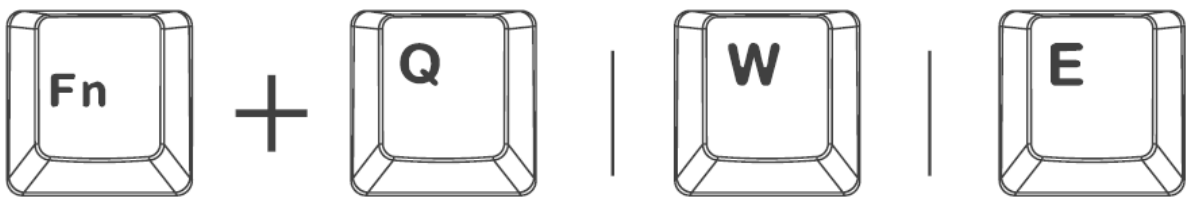
2. Press the combination key to switch to BT1 Equipment: (screen shows BT1 reconnection) Or: Mode light flashing slowly



3. Search for pairing name [YD-Y95-5.0 Click to connect successfully, and the screen displays “BT1 Connection successful “



Quick device switching with combination keys:




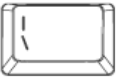
Long press Device 1 Device 2 Device 3

Long press the combination key Fn+letter keys Q, W, or E for 5 seconds, and the screen will display “BT1/2/3 pairing” (digital tube version mode light flashes quickly)

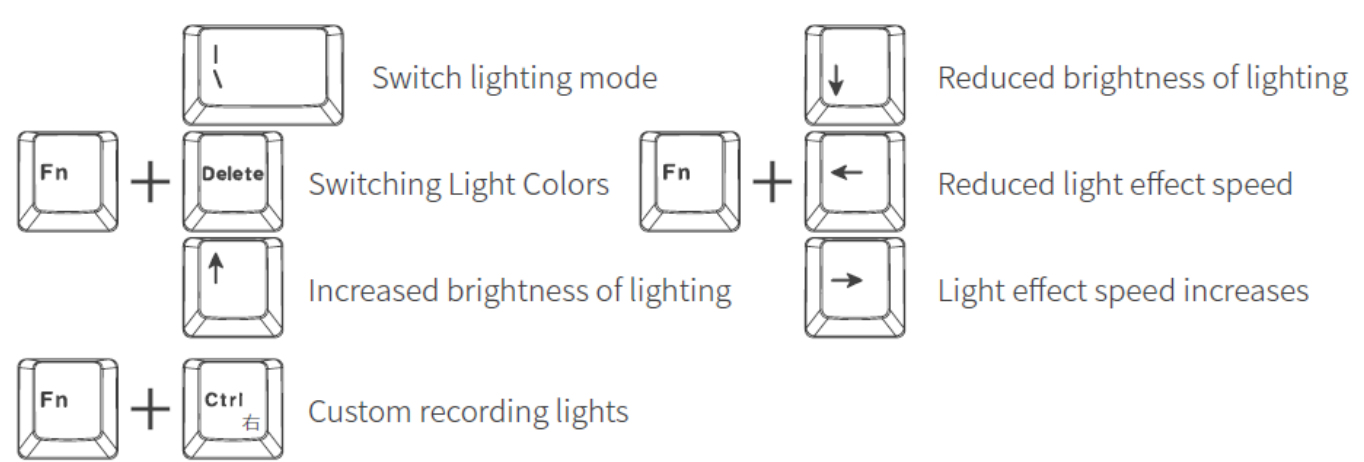
To enter search mode, click on the found pairing name [YD-Y95-5.0/3.0] in the Bluetooth list of the device:
Pair the link (please remove the previously linked device name to avoid confusion)

- Short press the Fn+number keys Q, W, or E to switch between different Bluetooth devices
- Check the keyboard power and connect to Bluetooth to display it on the computer.

Backlight mode adjustment

<div> + </div> <div>The combination button can switch 16 RGB lighting effects and turn off a total of 17 lighting effects</div>					
Constant light mode	breathing pattern	DrEaM RaInBoW	be touch-and-go	Strolling in the Rain	Ripple diffusion
was studded with stars	Stepping on the snow without a trace	a continuous flow	adrift	as the shadow follows the form	sinusoidal light wave
pinwheel	Rainbow Waterfall	rich and honored being in full flower	custom	Off Mode	
Game mode: FN+1 game lighting effects, fn+right Ctrl for free recording					

Backlight effect shortcut key adjustment



1. First, use Fn+1!, Enter custom backlight
2. Press Fn+Right Ctrl to enter backlight recording mode. At this time, the keyboard backlight will turn off, indicating that the backlight recording has started
3. Press the button that you want to record the backlight (press once to turn it on, then press again to turn it off), repeat this step, and record the backlight you want
4. After completion. press Fn+Right Ctrl again to save and exit backlight recording mode.

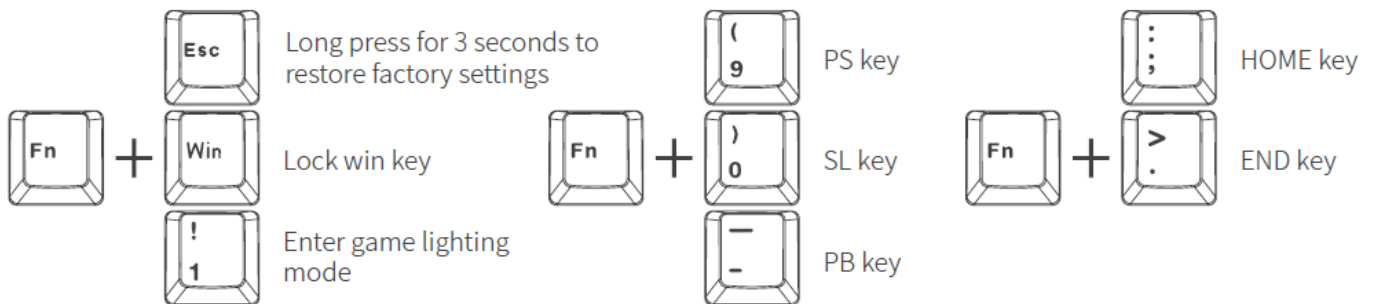
Adjustment of side RGB decorative lights

Switch the side light-emitting style



Colorful Flowing Light (default)	Monochrome Flowing Light: (Seven color cycle)	Monochromatic breathing: (Seven color cycle)
Monochrome always bright: red, green, blue, yellow, blue, purple, white		Off Mode

Other FN shortcut key instructions



A single press and FN + combination function in zone F under win system mode

Key position	Single press function	FN+ combination	Key position	Single press function	FN+ combination
F1	F1	My computer	F7	F7	Previous song
F2	F2	mailbox	F8	F8	Play/Pause
F3	F3	homepage	F9	F9	Next song
F4	F4	search	F10	F10	Mute
F5	F5	Refresh	F11	F11	Volume-
F6	F6	music	F12	F12	Volume+

Single press and FN+combination function in Zone F under MAC system mode

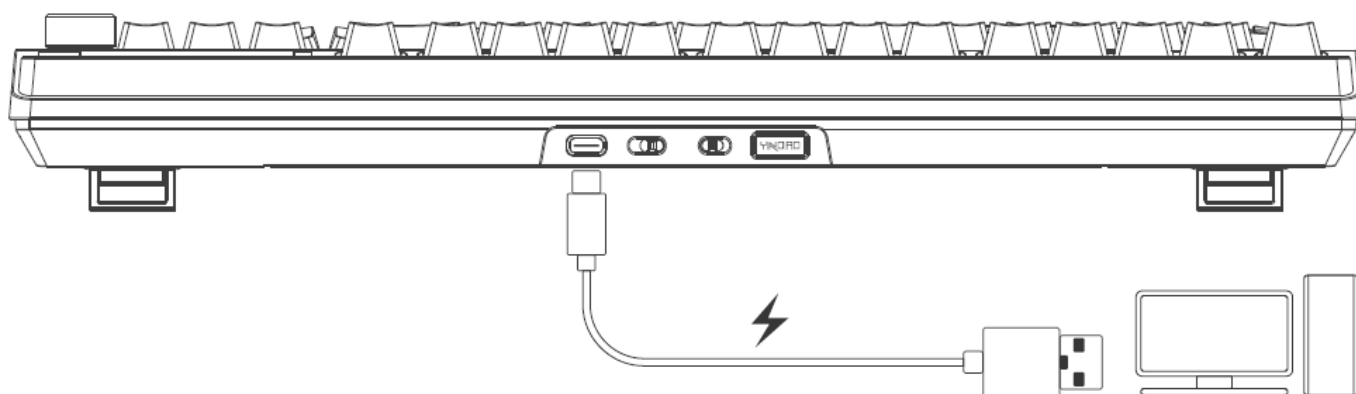
Key position	Single press function	FN+ combination	Key position	Single press function	FN+ combination
F1	Screen brightness-	F1	F7	Previous song	F7
F2	Screen brightness+	F2	F8	Play/Pause	F8
F3	Array running program	F3	F9	Next song	F9
F4	search	F4	F10	Mute	F10
F5	Exhale Siri	F5	F11	Volume-	F11
F6	screenshot	F6	F12	Volume+	F12

Intelligent Sleep Mode Description

After the wireless mode connection, if there is no operation status, the backlight will turn off after 5 minutes, and the keyboard will still be in working mode. If any key is triggered, the backlight will light up on time; After 30 minutes of inactivity, enter deep sleep mode.

Charging instructions

- Connect the keyboard to the computer through the equipped USB-type C cable to charge the keyboard.
- Low battery: The battery indicator light flashes slowly. During charging, the battery indicator light stays on.
- After being fully charged, the battery indicator light goes off.



Charging warning

1. Suggest using only the computer USB interface to charge the keyboard;
2. Do not use a fast-charging mobile phone charger to charge the keyboard;
3. Do not use inferior non-standard power adapters to charge the keyboard;
4. Do not use an overvoltage and overcurrent power adapter to charge the keyboard;
5. Please stay away from high-temperature devices when charging;
6. Please turn off the power switch when not in use for a long time.

If damage is caused by the use of noncompliant charging methods, our company has the right to refuse warranty service!



Product Parameters

- **Number of keys:** 95
- **Total travel of buttons:** 4.0mm
- FN key multifunctional
- **Product size:** 388.0x 145.0x40.1 ± 1mm
- **Product weight:** approximately 1105g (excluding wire/receiver)
- **Charging voltage/current:** DC 5V –500mA
- **Rated voltage:** DC 3.7V (fully charged with 4.2V)
- **Rated current:** 180mA @ 3.7V under lithium battery (default light effect)/15 mA (turn off all lights) Offline 400mA (default light effect)
- **Battery life:** approximately 48 hours (default continuous use of light effects)/approximately 266 hours (all lights off)
- **Battery capacity:** 4000/8000mAh
- **Charging interface:** Type-C interface
- **Computer system requirements:**
 - **Wired/2.4G mode:** Windows ALL operating system WIN XP, WIN7, WIN8, WIN10, WIN11, WIN12 (in) In Win95 and Win98 systems, drivers may be required.
 - **Wired mode/2.4G receiver:** configured with USB 1.1 or higher ports.
 - **Bluetooth mode:** WIN8, WIN10, and above systems.
 - **Bluetooth mode:** MAC computers with Bluetooth BT3.0, BLE4.0, BLE5.0 and above hardware, Android phone or tablet, 10S phone or tablet.
- **Hardware connection**

The wired USB/2.4G receiver supports hot swapping (plug and play)

Warranty matters

Warranty Regulations:

- From the date of purchase, product malfunctions caused by unstable electrical performance can be covered by a one-year warranty service, but artificial damage is not allowed (such as self-disassembly, transportation

damage, collision, and falling damage, water ingress and soaking, improper input voltage and current) Natural disasters (such as earthquakes Damage caused by fires, floods, etc. is not covered by the warranty.

- The columns listed in this warranty card must be filled out truthfully and stamped with the seal of the dealership to be considered valid.
- Once this warranty card is lost, it will not be reissued. Please make sure to compromise and keep it safe.

Product Maintenance Registration Form			
Number	date	Cause of malfunction	Remarks


Display screen function operation


Display screen function operation (please distinguish whether the purchased version has this configuration)

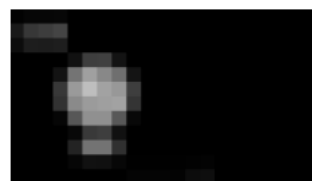
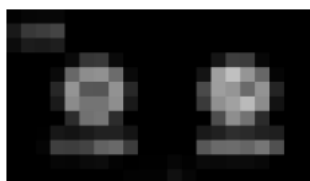
After starting up, display the [startup animation]. After running the startup animation, display the lmain interface.



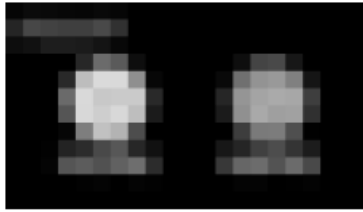
- Under the main interface, the knob has different functions: volume adjustment and menu selection When the

icon in the bottom right corner is,  it indicates that the current knob's function is volume adjustment;

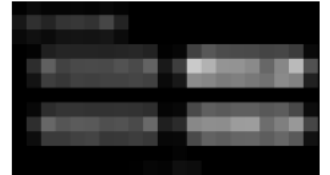
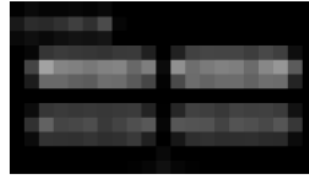
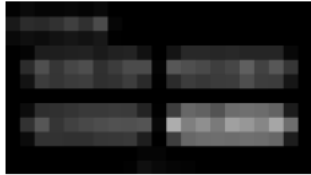
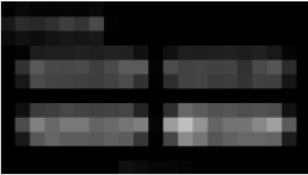
- At this time, turning the knob left/right can enter the [Volume Adjustment) interface: clockwise rotation to volume, counterclockwise rotation to volume-
- Pressing the knob can return to the main interface (or if there is no knob operation for five seconds, it will automatically return to the main intertace)
- When the icon in the bottom right corner is,  it indicates that the current knob function is menu selection (if there is no knob operation for 30 seconds, it will automatically return to the [volume adjustment] mode);
- At this time, turning the knob left/right can enter the (Settings) interface: clockwise is for selecting downwards, counterclockwise is for selecting upwards, select the desired setting option, and then press the knob to enter the corresponding setting interface



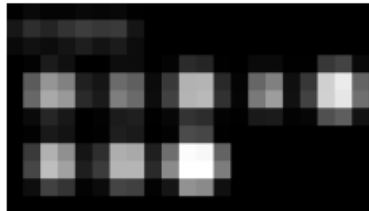
- After entering the interface selection option, you can select the content displayed on the main interface.



- After entering the [Lighting Effects] option, you can switch between different backlight effects



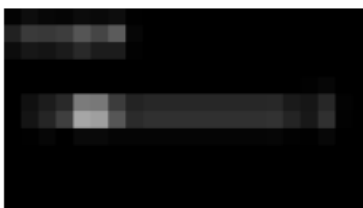
- After selecting the (Return) option, press the knob to return to the main interface



- After entering the [Light Brightness] option, you can switch between different backlight brightness (some lighting effects cannot switch brightness, so you cannot enter this interface). Rotate clockwise to brightness+ and counterclockwise to brightness-



- After entering the [Light Speed] option, you can switch between different backlight speeds (some lighting effects cannot switch speeds, so you cannot enter this interface). Rotate clockwise to speed + and counterclockwise to speed-



- After entering the [Language Selection] option, you can select the corresponding language



- After selecting the [Return] option, press the knob to return to the main interface

- **The third mock examination (Bluetooth/wired/2.4G) switching/pairing method:**

Switch to different modes through the right + three-section switch: Bluetooth on the left – wired in the middle - 2.4G on the right to switch to different modes, and the corresponding mode icon on the main interface will light up



- **Bluetooth mode:**

Turn the switch to the left and short-press the combination key [FN+Q/W/E) to select any Bluetooth channel (or long-press the combination key to force pairing). At this time, the screen will display the pairing/reconnection status of the current channel:



- **Wired mode:**




Switch to the middle and switch the keyboard to wired mode

- **2.4G mode:**

When the switch is turned to the right, the screen will display the pairing/reconnection status of the current channel (pairing can be forced by long pressing the combination key [FN+R]):



- **Charging/low/full state display:**

When charging the keyboard, the top right corner of the screen displays:  that the battery voltage starts to low when it is around 3.3V, and the top right corner of the screen displays:  that the battery is fully charged, and the top right corner of the screen displays: .

Wuhan Weigang Electronic Co., Ltd

- Room 2402-2, floor 24, building C5, Rongke Zhigu Industrial Project, Liqiao Village, Hongshan District, Wuhan
- Tel: 027-50434583

Documents / Resources



[Kaideruisa Y95 Mechanical Keyboard](#) [pdf] User Manual
2BHTK-K-1, 2BHTKK1, k 1, Y95 Mechanical Keyboard, Y95, Mechanical Keyboard, Keyboard

References

- [User Manual](#)

[Manuals+](#), [Privacy Policy](#)

This website is an independent publication and is neither affiliated with nor endorsed by any of the trademark owners. The "Bluetooth®" word mark and logos are registered trademarks owned by Bluetooth SIG, Inc. The "Wi-Fi®" word mark and logos are registered trademarks owned by the Wi-Fi Alliance. Any use of these marks on this website does not imply any affiliation with or endorsement.