

KAHOYI JPT02 Desktop Keyboard Tray Under Desk Pull Out



KAHOYI JPT02 Desktop Keyboard Tray Under Desk Pull Out Instruction Manual

[Home](#) » [KAHOYI](#) » KAHOYI JPT02 Desktop Keyboard Tray Under Desk Pull Out Instruction Manual 

Contents

- [1 KAHOYI JPT02 Desktop Keyboard Tray Under Desk Pull Out](#)
- [2 Packing List](#)
- [3 Tools Required \(Not included\)](#)
- [4 Assembly Instructions](#)
- [5 Specifications](#)
- [6 FAQ](#)
- [7 Documents / Resources](#)
 - [7.1 References](#)

KAHOYI

KAHOYI JPT02 Desktop Keyboard Tray Under Desk Pull Out



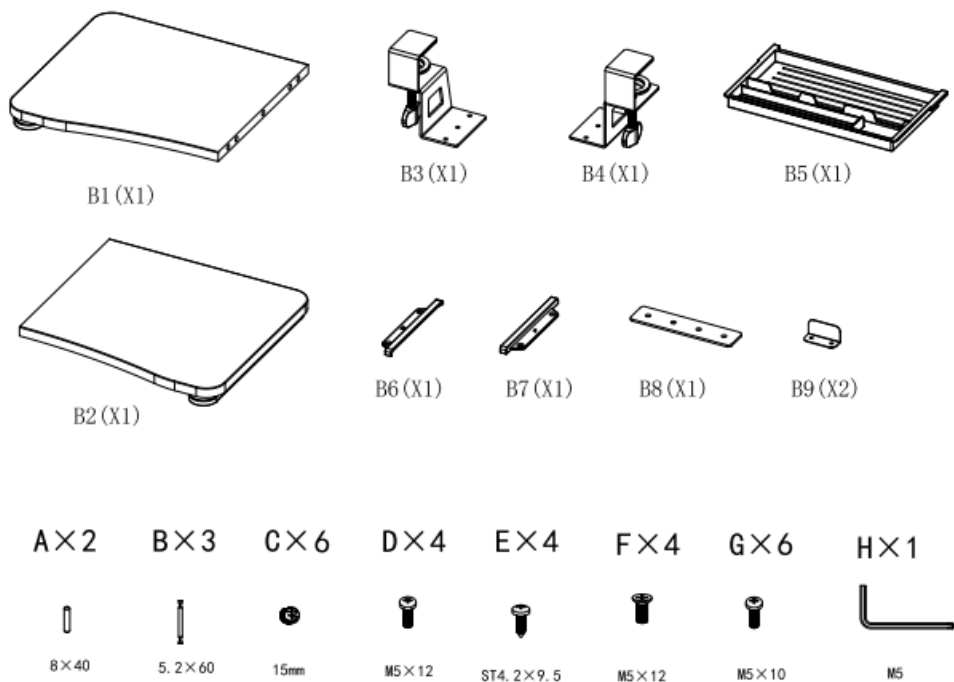
Warning!

Please read the installation instructions carefully, we are not responsible for any damage or injury caused by improper assembly or use! Any questions, please contact our customer service.

Packing List

The packing list includes various parts and tools required for assembly:

- Part B1 (x1), Part B2 (x1), Part B3 (x1), Part B4 (x1), Part B5 (x1)
- Part B6 (x1), Part B7 (x1), Part B8 (x1), Part B9 (x2)
- Screw A x2 (8×40), Screw B x3 (5.2×60), Screw C x6 (15mm)
- Screw D x4 (M5x12), Screw E x4 (ST4.2×9.5), Screw F x4 (M5x12)
- Screw G x6 (M5x10), Screw H x1 (M5)



Tools Required (Not included)

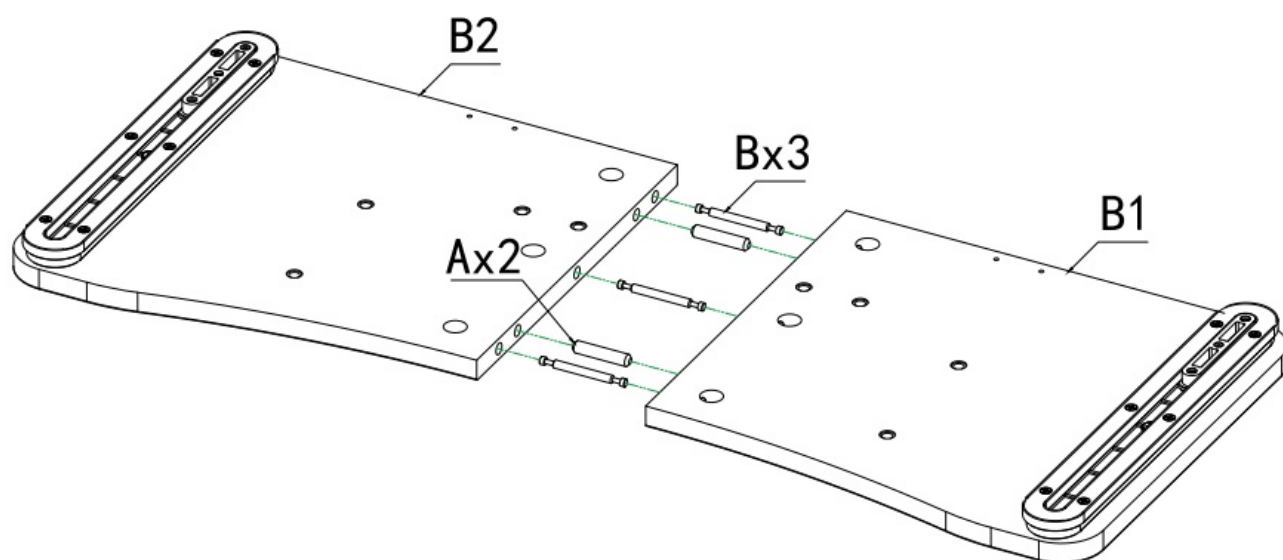
Screwdriver



Assembly Instructions

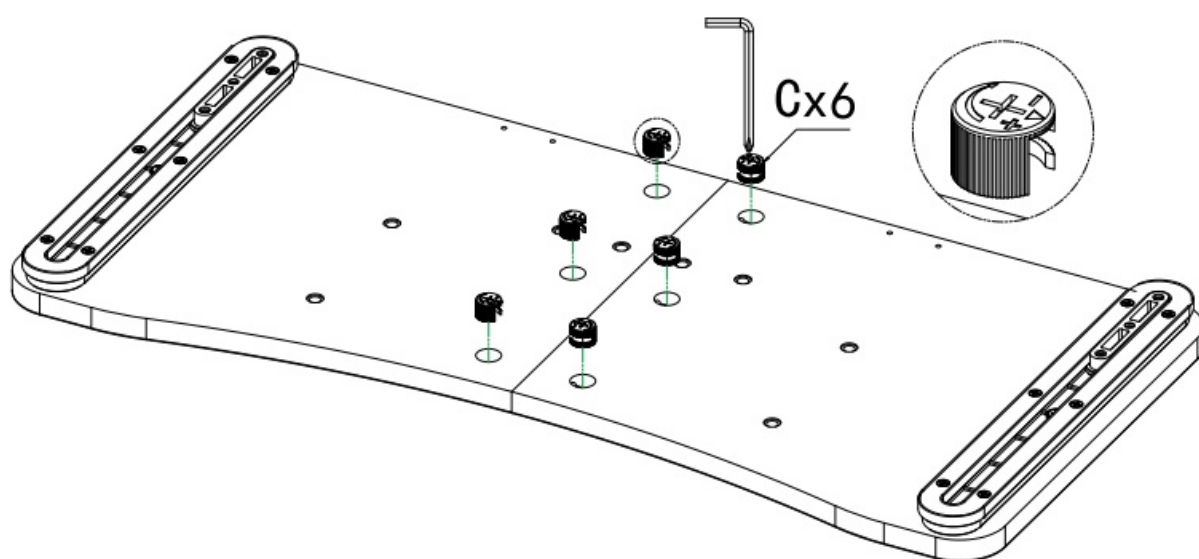
Follow these steps to assemble the product:

Step 1



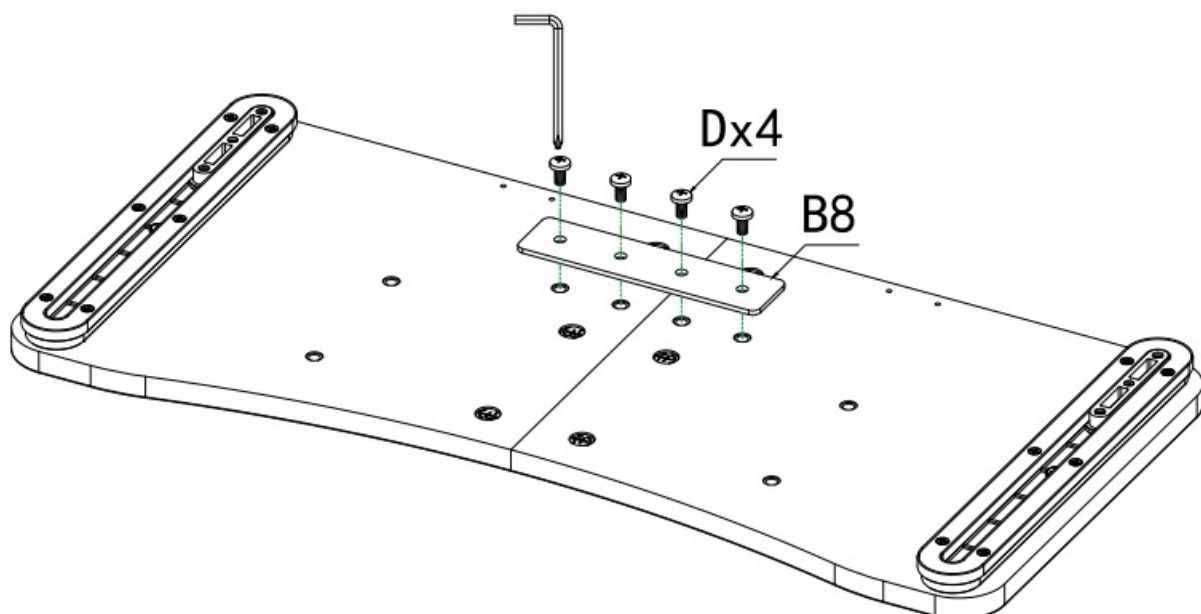
Align parts B2 and B1 and secure them using 2 screws A.

Step 2



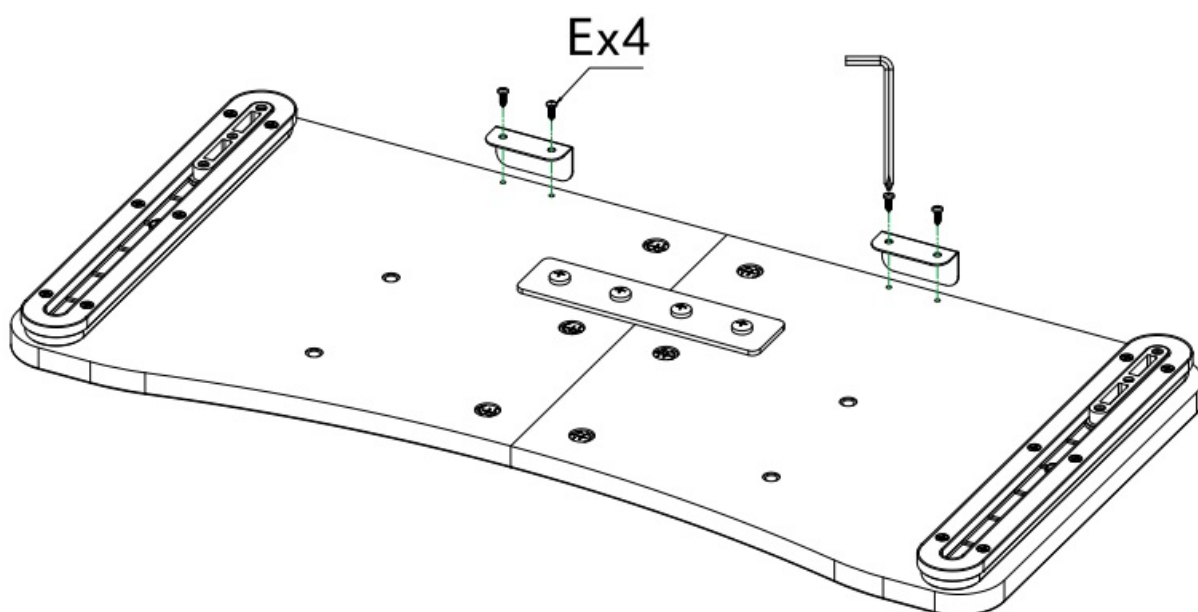
Insert 6 screws C through the top of part B1.

Step 3



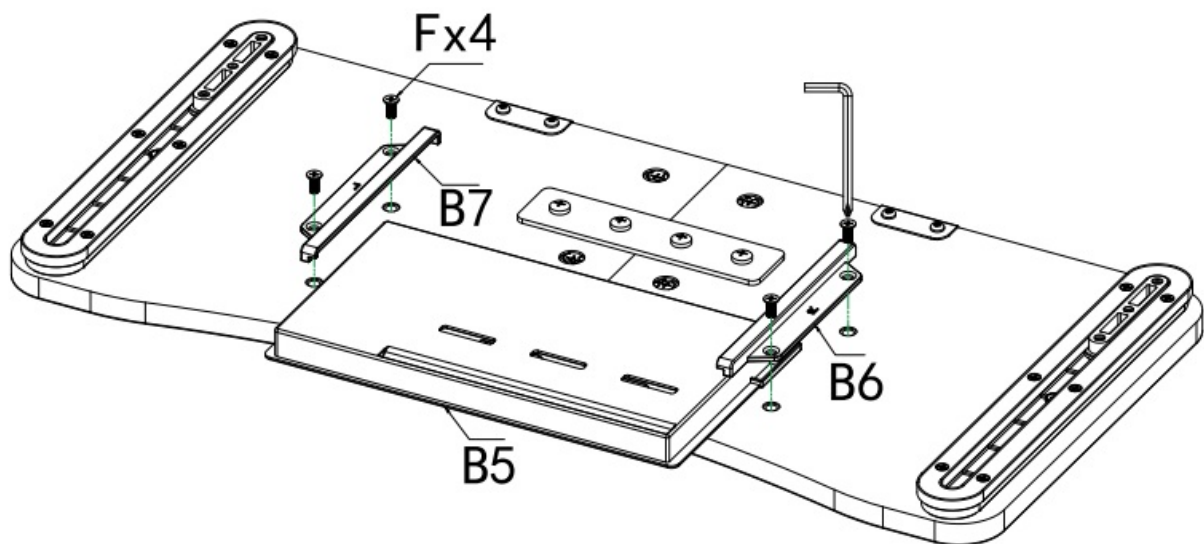
Place part B8 over the screws C on part B1 and fasten with 4 screws D.

Step 4



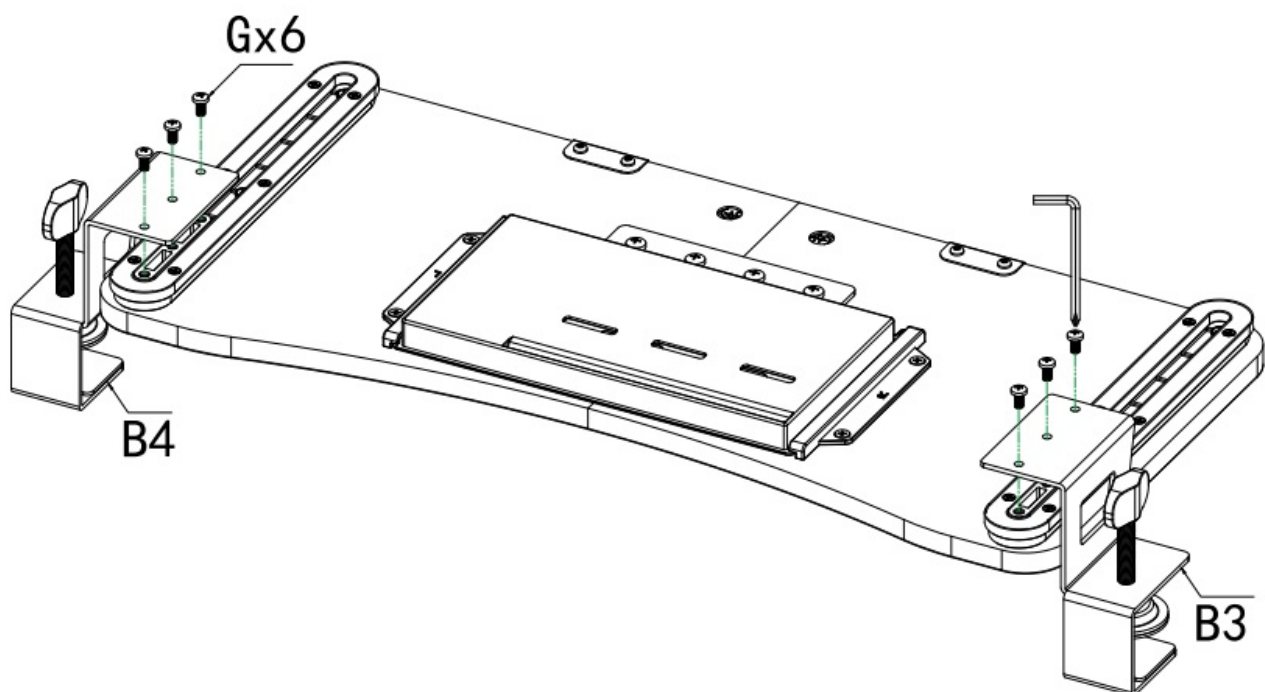
Secure part B8 to part B1 using 4 screws E.

Step 5



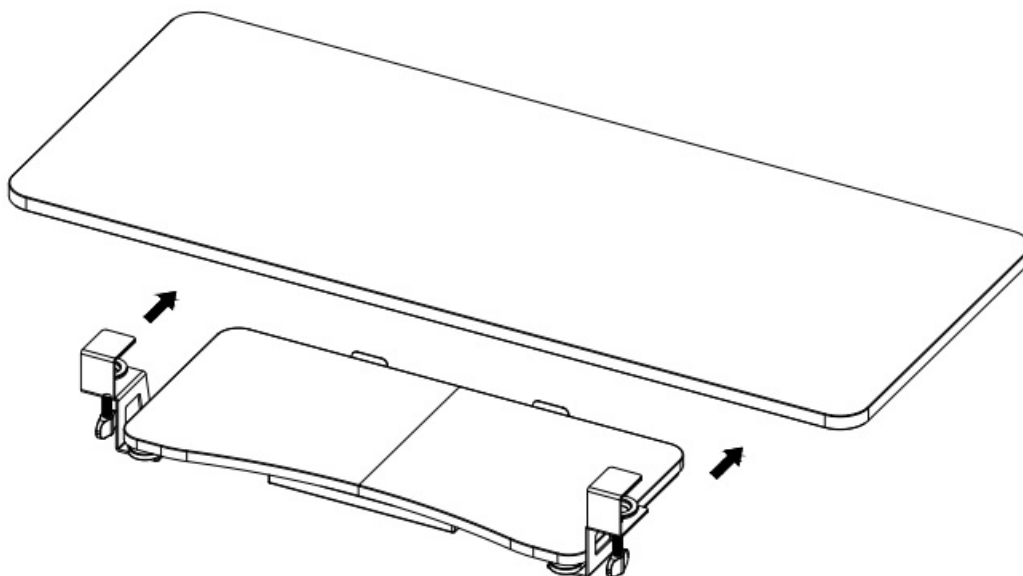
Attach part B7 to the assembly using 4 screws F, with part B5 underneath and part B6 on top.

Step 6



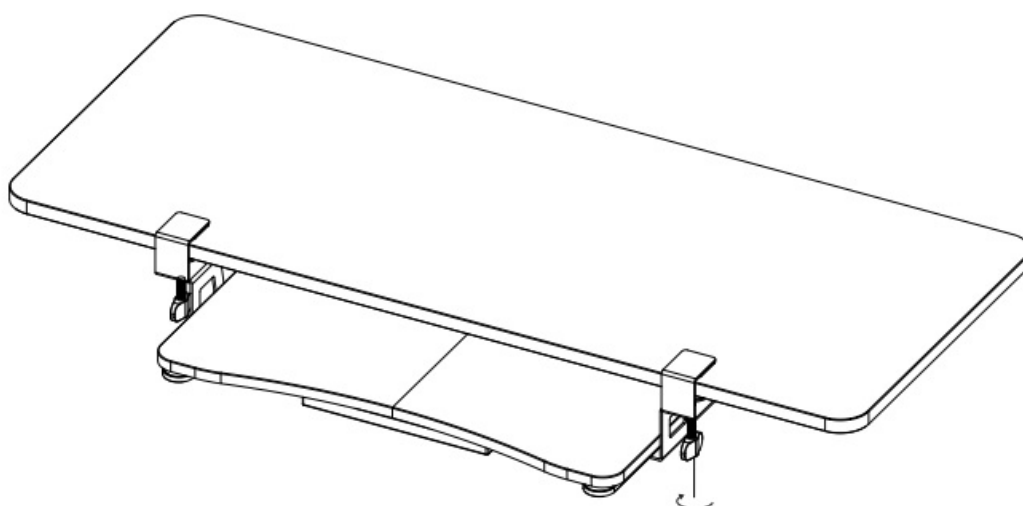
Attach part B4 to the side of the assembly using 6 screws G, then attach part B3 to the opposite side.

Step 7



Prepare the main body for the final assembly by placing it upside down.

Step 8



Secure the previously assembled parts to the main body using the remaining screws H.

Specifications

Part	Description	Quantity
B1 – B9	Various assembly components	1-2 each
A – H	Screws and fasteners	1-6 each

FAQ

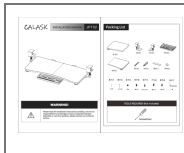
- **What tools do I need for assembly?**
 - You will need a screwdriver, which is not included in the packing list.
- **Can I contact customer service if I have questions?**

- Yes, if you have any questions, please contact our customer service.
- **What should I do if I am missing a part or screw?**
 - Verify the packing list and contact customer service for assistance with missing parts.
- **Is it possible to reassemble the product if needed?**
 - Yes, you can disassemble and reassemble the product but always refer to the installation instructions to avoid damage or injury.

WARNING!

Please read the installation instructions carefully, we are not responsible for any damage or injury caused by improper assembly or use! Any questions, please contact our customer service.

Documents / Resources



[KAHOYI JPT02 Desktop Keyboard Tray Under Desk Pull Out](#) [pdf] Instruction Manual
JPT02 Desktop Keyboard Tray Under Desk Pull Out, JPT02, Desktop Keyboard Tray Under Desk Pull Out, Tray Under Desk Pull Out, Desk Pull Out, Pull Out

References

- [User Manual](#)

[Manuals+](#), [Privacy Policy](#)

This website is an independent publication and is neither affiliated with nor endorsed by any of the trademark owners. The "Bluetooth®" word mark and logos are registered trademarks owned by Bluetooth SIG, Inc. The "Wi-Fi®" word mark and logos are registered trademarks owned by the Wi-Fi Alliance. Any use of these marks on this website does not imply any affiliation with or endorsement.