



[Home](#) » [kaercher](#) » **KAERCHER K 2 Universal Edition Installation Guide** 

Contents [[hide](#)]

- [1 KAERCHER K 2 Universal Edition](#)
- [2 Product Usage Instructions](#)
- [3 Installation and Startup](#)
- [4 Operation](#)
- [5 Troubleshooting](#)
- [6 Technical specifications](#)
- [7 EU Declaration of Conformity](#)
- [8 FAQs](#)
- [9 Documents / Resources](#)
 - [9.1 References](#)

KÄRCHER

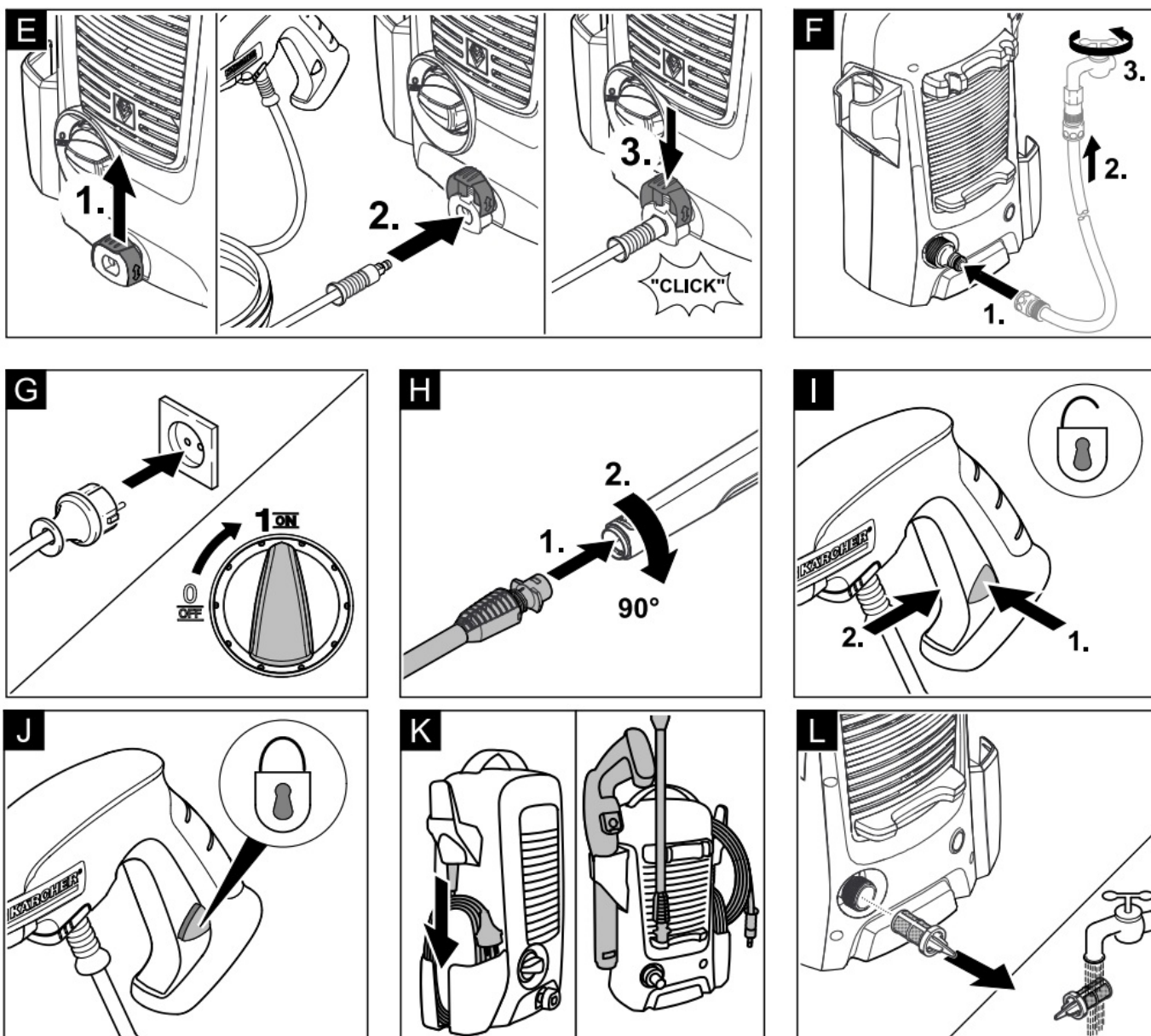
KAERCHER K 2 Universal Edition



Specifications

- Electric Connection:
 - Voltage: 220-240 V 1~50-60 Hz
 - Current: 6A
 - Protection Class: IPX5, II
- Water Connection:
 - Inlet Pressure (max.): 1.2 MPa
 - Inlet Temperature (max.): Not specified
 - Flow Rate (min.): 8 l/min
- Performance Data:
 - Operating Pressure: 7.4 MPa – 11 MPa
 - Flow Rate: 5.2 l/min – 6.0 l/min
 - Noise Level: 78 dB(A) – 93 dB(A)

Product Usage Instructions



Safety Measures:

Please read the original operating instructions and safety instructions before using the device. Keep both booklets for future reference.

Proper Use:

Use the high-pressure water jet for cleaning facades, terraces, gardening tools, etc., maintaining a minimum distance of 30 cm.

Symbols on the Machine:

- Avoid directing the high-pressure jet at persons, animals, live electrical equipment, or the appliance itself.
- Protect the appliance against frost and do not connect it directly to the public drinking water network.

Safety Devices:

- The appliance switch prevents unintentional operation of the device.
- The lock trigger gun prevents accidental start of the device by locking the trigger gun lever.
- The auto-stop function turns off the pump and stops the high-pressure jet when the trigger gun lever is released.

Register your product

www.kaercher.com/welcome

Safety



Please read these original operating instructions and the enclosed safety instructions prior to the initial use of your device. Proceed accordingly. Keep both booklets for future reference or subsequent owners.

Proper use

This high pressure cleaner is designed for domestic use only.

- for cleaning machines, vehicles, buildings, tools, facades, terraces, gardening tools, etc. by means of a high-pressure water jet (if necessary, with additional cleaning agents).

Symbols on the machine



- The high pressure jet must not be directed at persons, animals, live electrical equipment or at the appliance itself.



- Protect the appliance against frost. The appliance must not be directly connected to the public drinking water network.

Safety Devices

CAUTION

Safety installations serve the protection of the user and may not be modified or bypassed.

Appliance switch

- The appliance switch prevents unintentional operation of the appliance.




Lock trigger gun

- The lock locks the lever of the trigger gun and prevents the accidental start of the device.

Auto-stop function

- If the lever on the trigger gun is released, the pressure switch turns off the pump, the high-pressure jet stops. If the lever is pulled the pump is turned on again.

Environmental protection

-  The packaging material can be recycled. Please arrange for the environmentally appropriate disposal of the packaging.
-  Old appliances contain valuable recyclable materials that should be recycled properly. Please arrange for the environmentally appropriate disposal of the old devices.
- Electrical and electronic devices often contain components that could potentially pose a danger to human health and the environment if handled or disposed of incorrectly. However, these components are necessary for the proper operation of the device.
- Devices marked with this symbol must not be disposed of with regular household rubbish.
-  Cleaning operations which produce oily waste water, e.g. engine washes,

underbody washes, may only be carried out using washing stations equipped with an oil separator.

Notes about the ingredients (REACH)

You will find current information about the ingredients at: www.kaercher.com/REACH

Description of the Appliance

The scope of delivery of the device (depending on the model) is illustrated on the packaging. These operating instructions describe all possible options. Illustrations on Page 2

1. High-pressure connection
2. Appliance switch „0/OFF“ / „I/ON“
3. Storage for mains cable
4. Mains cable with mains plug
5. Storage for high-pressure hose
6. Carrying handle
7. Storage for spray lance
8. Storage for trigger gun
9. Water connection with integrated sieve
10. Coupling element for water connection
11. Nameplate
12. Trigger gun
13. Lock trigger gun
14. High-pressure hose
15. Clamp for high-pressure hose
 - Optional
16. Spray lance with Dirtblaster For strong contaminations.
17. Spray lance with high-pressure nozzle
 - For normal cleaning tasks.
 - Additionally required
18. Fabric-reinforced water hose with commercially available coupling.
 - Minimum diameter, 1/2 inches (13 mm).
 - Minimum length 7.5 m.

Installation and Startup

- Illustration
 - Mount loose parts delivered with the appliance prior to start-up.
- Illustration
 - Pull out the clamp from the trigger gun and plug the high-pressure hose into the trigger gun.
 - Push the clamp in until it locks. Check the secure connection by pulling on the high-pressure hose.
- Illustration
 - Start up

ATTENTION

Impurities in the water can damage the high-pressure pump and the accessories. For protection, the use of the KÄRCHER water filter (optional accessory, order no. 4.730-059) is recommended.

Operation

CAUTION

Dry running of more than 2 minutes leads to damage of the high-pressure pump. If the appliance does not build up pressure within 2 minutes, switch the appliance off and proceed in accordance with the instructions in Chapter “Troubleshooting”.

High pressure operation

CAUTION

- Keep a distance of at least 30 cm when using the jet for cleaning painted surfaces to avoid damage.

ATTENTION

- Car tyres, paint or sensitive surfaces such as wood should not be cleaned with the dirt blaster, as there is a risk of damage.

- Park the appliance on an even surface.

Illustration Cleaning

Interrupting operation

- **Illustration**

Release the lever of the trigger gun and lock it.

- During longer breaks (more than 5 minutes), also turn the appliance off using the “ON/OFF” switch.

Finish operation

CAUTION

Only separate the high-pressure hose from the trigger gun or the device when there is no pressure in the system.

- Release the lever of the trigger gun.
- Turn off the appliance “0/OFF”.
- Disconnect the mains plug from the socket.
- Turn off tap.
- Press the lever on the trigger gun to release any remaining pressure in the system.
- Lock the lever of the trigger gun.
- Detach the appliance from the water supply.

Transport and storage

CAUTION

- Risk of personal injury or damage!
- Mind the weight and storage of the appliance during transport.

When transporting by hand

- Lift appliance by the carrying handle and carry it.

When transporting in vehicles

- Secure the appliance against shifting and tipping over.

Storing the Appliance

- Park the machine on an even surface.

- **Illustration**

Stow the power cord and the remaining accessories on the appliance.

Prior to extended storage periods, as during the winter, also observe the instructions in the Care section.

Frost protection

ATTENTION

Appliances and accessories that are not completely drained can be destroyed by frost. Completely drain appliance and accessories and protect them against frost. To avoid damage:

- Completely drain all water from the appliance: Switch the appliance on with detached high-pressure hose and detached water supply (max. 1 minute) and wait, until no more water exits at the high pressure connection. Turn off the appliance.
- Store the appliance and all entire accessories in a frost-free room.

Maintenance and care

- The appliance is maintenance-free.

Care

DANGER

Risk of electric shock.

- Prior to all work on the appliance, switch off the appliance and pull the power plug.

Clean the sieve in the water connection

- Clean the sieve in the water connection regularly.

ATTENTION

The sieve must not be damaged.

- Remove coupling from the water connection.

Illustration

Pull the sieve out (e.g. using flat pliers), clean under running water and then reinsert it.

Troubleshooting

DANGER

Risk of electric shock.

- Prior to all work on the appliance, switch off the appliance and pull the power plug.

Appliance is not running

- Push the lever of the trigger gun, the device will switch on.
- Check whether the voltage indicated on the type plate corresponds to the voltage of the mains supply.
- Check the mains connection cable for damages.

Pressure does not build up in the appliance

- Completely open the water tap.
- Appliance ventilation: Switch the appliance on with the high-pressure hose detached and operate (max. 2 minutes) until the water exits the high-pressure connection without bubbles. Switch off appliance and reconnect high-pressure hose.
- Pull out the sieve in the water connection using flat-nose pliers and clean under running water.

Strong pressure fluctuations

- Clean high-pressure nozzle: Remove dirt and debris from the nozzle bore, using a needle and rinse through with water from the front.
- Check water flow quantity.

Appliance is leaking

- Slight leakage from the appliance pump is normal.
- If the leakage increases contact the authorized customer service.

Accessories and Spare Parts


- Only use original accessories and spare parts, they ensure the safe and trouble-free operation of the device. For information about accessories and spare parts, please visit www.kaercher.com.

Warranty

- The warranty terms published by the relevant sales company are applicable in each country. We will repair potential failures of your appliance within the warranty period free of charge, provided that such failure is caused by faulty material or defects in manufacturing. In the event of a warranty claim please contact your dealer or the nearest authorized Customer Service center. Please submit the proof of purchase.
- Addresses can be found under: www.kaercher.com/dealersearch

Technical specifications

Electrical connection

- Voltage 220-240 V 50-60 Hz
- Power consumption 6 A
- Protection class IPX5
- Protective class II 
- Mains fuse (slow-blow) 10 A

Water connection

- Max. feed pressure 1,2 MPa
- Max. feed temperature 40 °C
- Min. feed volume 8 l/min

Performance data

- Working pressure 7,4 MPa
- Max. permissible pressure 11 MPa
- Water flow rate 5,2 l/min
- Max. flow rate 6,0 l/min
- Recoil force of trigger gun 11 N

Dimensions and weights

- Length 280 mm
- Width 182 mm
- Height 390 mm
- Typical operating weight 4,5 kg

Values determined as per EN 60335-2-79

- Hand-arm vibration value 1,6 m/s²
- Uncertainty K 0,6 m/s²
- Sound pressure level 78 LpA
- Uncertainty KpA 3 dB(A) dB(A)
- Sound power level LWA + Uncertainty KWA 93 dB(A)

Subject to technical changes.

EU Declaration of Conformity

We hereby declare that the machine described below complies with the relevant basic safety and health requirements of the EU Directives, both in its basic design and construction as well as in the version put into circulation by us. This declaration shall cease to be valid if the machine is modified without our prior approval.

- Product: High pressure cleaner
- Type: 1.673-xxx
- Relevant EU Directives
 - 2006/42/EC (+2009/127/EC)
 - 2014/30/EU 2011/65/EU 2000/14/EC
- Applied harmonized standards
 - EN 60335–1
 - EN 60335–2–79
 - EN 62233: 2008
 - EN 55014–1:2017
 - EN 55014–2: 2015
 - EN 61000–3–2: 2014
 - EN 61000–3–3: 2013
 - EN IEC 63000: 2018
- Applied conformity evaluation method 2000/14/EC: Appendix V
- Sound power level dB(A)
- **Measured:** 91
- **Guaranteed:** 93

The signatories act on behalf of and with of the authority of the company management.


H. Jenner
 Chairman of the Board of Management


S. Reiser
 Director Regulatory Affairs & Certification

- Documentation supervisor: S. Reiser
- Alfred Kärcher SE & Co. KG Alfred-Kärcher-Straße 28-40 71364 Winnenden
 (Germany)
- Tel.: +49 7195 14-0
- Fax: +49 7195 14-2212
- Winnenden, 2022/02/01

THANK YOU!

- Register your product and benefit from many advantages.
- www.kaercher.com/welcome
- Rate your product and tell us your opinion.

www.kaercher.com/dealersearch

- Alfred Kärcher SE & Co. KG
- Alfred-Kärcher-Str. 28-40
- 71364 Winnenden (Germany)



FAQs

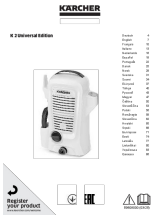
Q: How should I clean the water inlet filter?

A: To clean the water inlet filter, disconnect the power supply and remove any debris from the filter to ensure proper water flow.

Q: What should I do in case of strong pressure fluctuations?

A: In case of strong pressure fluctuations, check for any blockages in the water inlet, clean the filter, and ensure proper water flow.

Documents / Resources

	<p>KAERCHER K 2 Universal Edition [pdf] Installation Guide</p> <p>K 2 Universal Edition, K 2, Universal Edition, Edition</p>
---	--

References

- [User Manual](#)

◆ Edition, K 2 Universal Edition, K-2, kaercher, Universal

■ kaercher Edition

—Previous Post

KAERCHER BVL 3/1 Bp Backpack Vacuum Cordless Instruction Manual

Leave a comment

Your email address will not be published. Required fields are marked *

Comment *

Name

Email

Website

☐ Save my name, email, and website in this browser for the next time I comment.

Post Comment

Search:

e.g. whirlpool wrf535swhz

Search

This website is an independent publication and is neither affiliated with nor endorsed by any of the trademark owners. The "Bluetooth®" word mark and logos are registered trademarks owned by Bluetooth SIG, Inc. The "Wi-Fi®" word mark and logos are registered trademarks owned by the Wi-Fi Alliance. Any use of these marks on this website does not imply any affiliation with or endorsement.