



Kaadas KA342 Wifi Keypad Fingerprint Smart Lock Installation Guide

[Home](#) » [Kaadas](#) » Kaadas KA342 Wifi Keypad Fingerprint Smart Lock Installation Guide 

Contents

- [1 Kaadas KA342 Wifi Keypad Fingerprint Smart Lock](#)
- [2 Installation Guide](#)
- [3 Quick Start Guide](#)
- [4 TOOL REQUIRED](#)
- [5 INSTALLATION OVERVIEW](#)
- [6 Parts List](#)
- [7 install exterior assembly](#)
- [8 At a Glance](#)
- [9 How to Lock/ Unlock](#)
- [10 Definitions](#)
- [11 Quick Set Up](#)
- [12 Factory Default Settings](#)
- [13 Troubleshooting](#)
- [14 FCC Statement](#)
- [15 ISED Statement](#)
- [16 Documents / Resources](#)
 - [16.1 References](#)

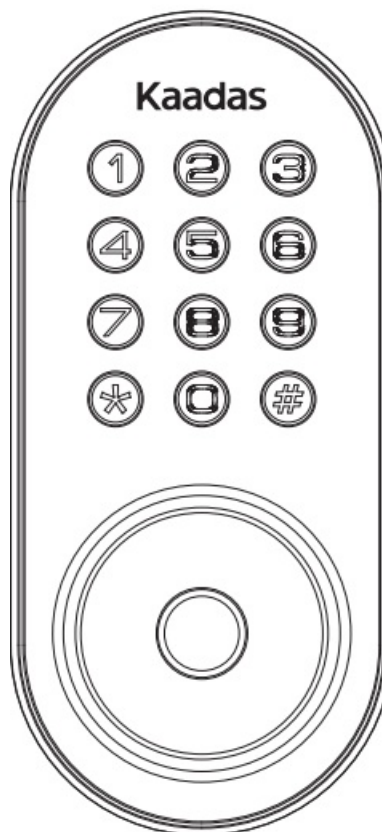
Kaadas

Kaadas KA342 Wifi Keypad Fingerprint Smart Lock

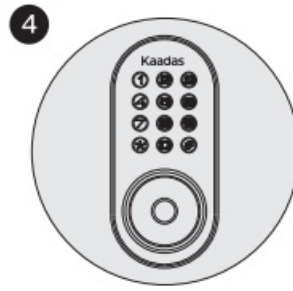
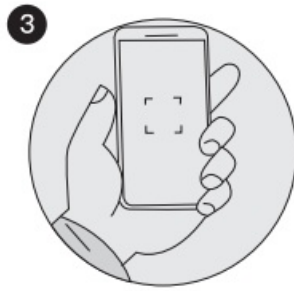
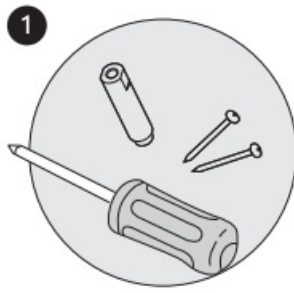


- KA342
- Wi-Fi Keypad Fingerprint Smart Lock

Installation Guide/ Quick Start Guide



Thank you for purchasing our products. Please review this manual thoroughly before operating your device. All pictures in this manual are for illustration purpose only. Actual product may vary due to product upgrade.



1. Following the installation instruction to install the smart lock.
2. Register and Log in Kaadas Home App. add device by scanning QR code on the device
3. Scan QR code to download Kaadas Home App
4. Calibrate the smart lock and complete bluetooth & Wi-Fi setting in the App.

Installation Guide

Read this manual carefully before Installing and operating!

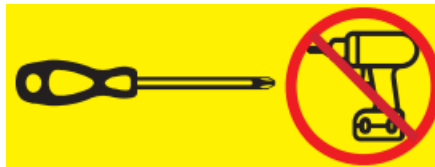
1. **P3 STEP 1:** Prepare the door and check dimensions
2. **P4 STEP 2:** Install the latch and strike
3. **P6 STEP 3:** Install exterior assembly
4. **PI STEP 4:** Install interior assembly

Quick Start Guide

P8	At a Glance
P 9	How to Lock/Unlock
P 10	Definitions
P 11	Code Format
P 12	Quick Set Up
P 14	Factory Default Settings
P 15	Download Kaadas Home App
P 16	Troubleshooting
P17	FCC Statement & Warnings

TOOL REQUIRED

-



Do not use an electric

- screwdriver during installation.

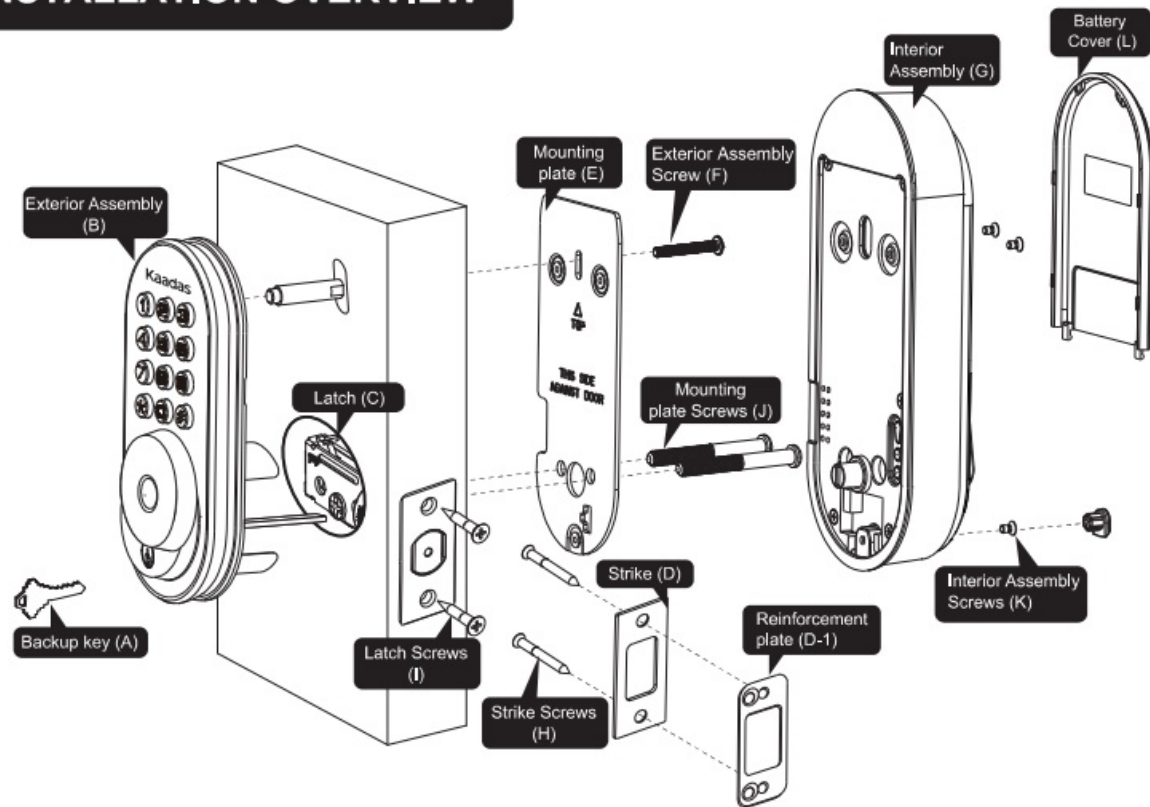
- **IMPORTANT:**

Do not load batteries until lock is completely installed.



INSTALLATION OVERVIEW

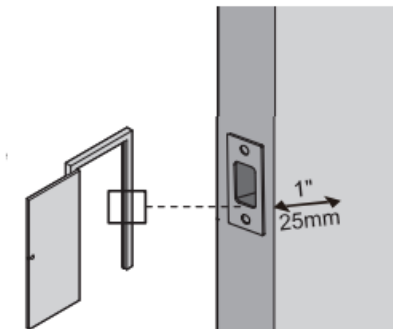
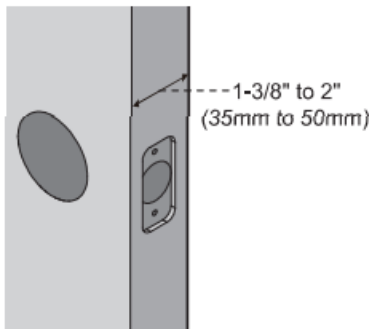
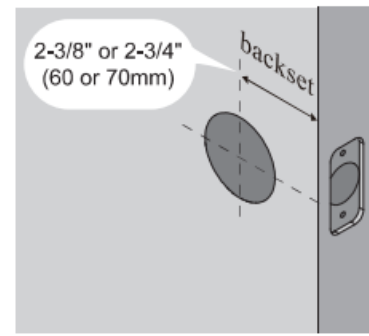
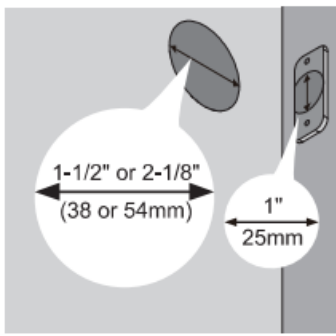
INSTALLATION OVERVIEW



Parts List

A Backup Key x2 	B Exterior Assembly x1 	C Latch x1 C-1 Drive-In Collar (Optional) 	D Strike x1 D-1 Reinforcement Plate x1 (optional)
E Mounting Plate x1 	F Exterior Assembly Screw (Optional) 	G Interior Assembly x1 	H Strike Screws x2 I Latch Screws x2
J Mounting plate Screws x2 (35mm<door thickness<50mm)	K Interior Assembly Screws x3 	L Battery Cover x1 	M Reset Tool x1

Prepare the door and check dimensions

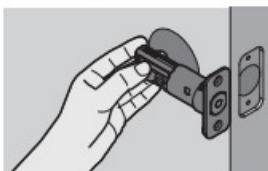


- Measure to confirm that the hole in the door is 1-1/2" or 2-1/8" (38mm or 54mm) Measure to confirm that the hole in the door edge is 1" (25mm).
- Measure to confirm that the door is 1-3/8" to 2" (35 mm to 50mm) thick.
- Measure to confirm that the backset is either 2-3/8" or 2-3/4" (60 or 70mm)
- Make sure the hole in the door frame is 2-3/8" or 2-3/4" (60 or 70mm) drilled a minimum of 1" (25mm) deep, to leave enough space for the deadbolt to extend into the door frame when the door is locked.

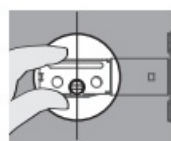
Notes: Make sure the door frame is aligned with the door. There are no obstructions stuck in the door frame.

Install the latch and strike

A Determine backset and adjust the latch

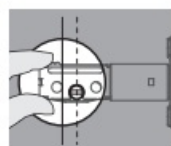


Hold the latch in front of the door hole, with the latch face flush against the door edge. Is the slotted hole centered in the door hole?



YES

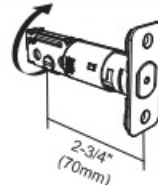
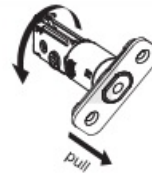
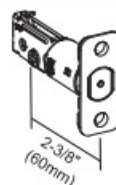
No adjustment is required. Proceed to next step.



NO

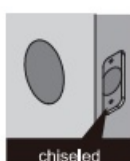
Slotted hole is NOT centered.

Rotate and pull the latch as shown to extend latch.

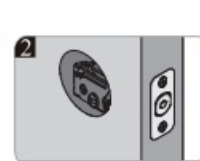
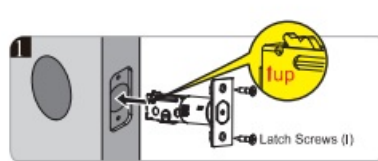


B

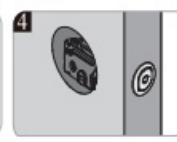
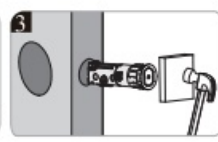
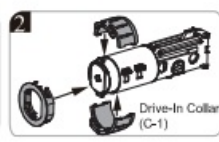
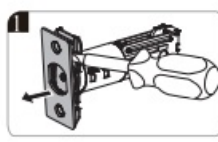
Install the latch



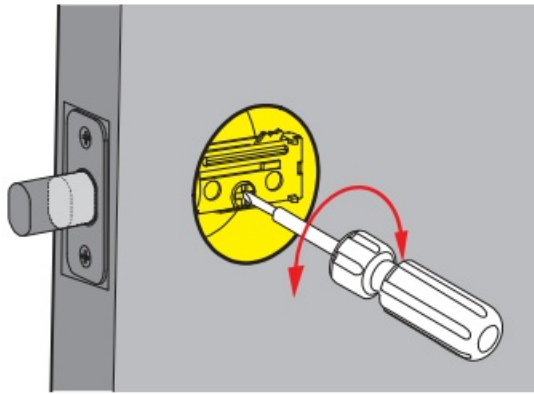
chiseled



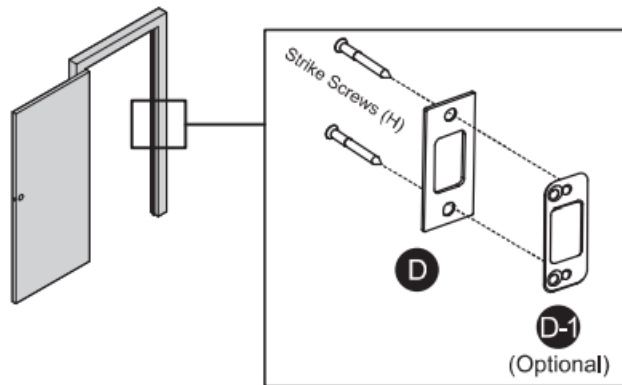
not chiseled



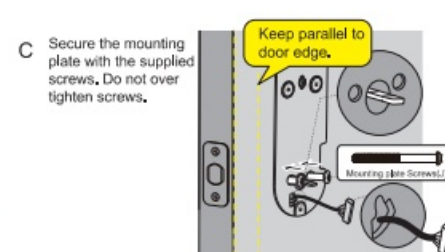
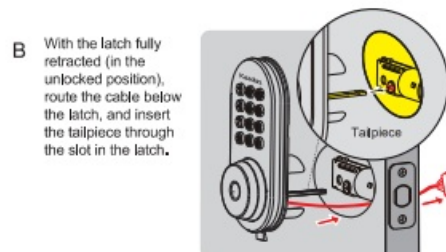
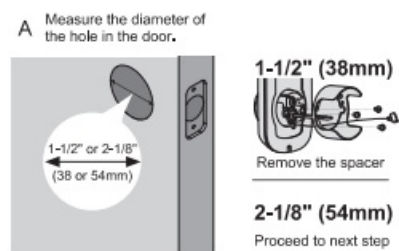
- Use a screwdriver to test if deadbolt works smoothly.



- Install strike on the door frame
 - **important**
 - Make sure the hole in door frame is drilled a minimum of 1" (25mm) deep.

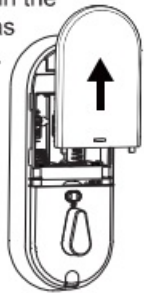


install exterior assembly

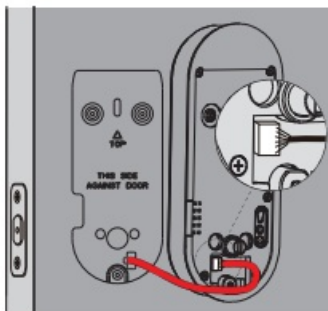


1install interior assembly

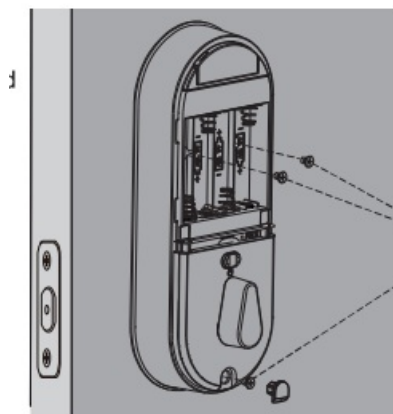
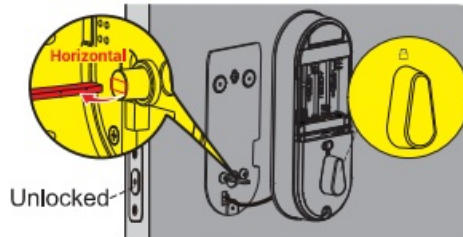
battery
in the
as



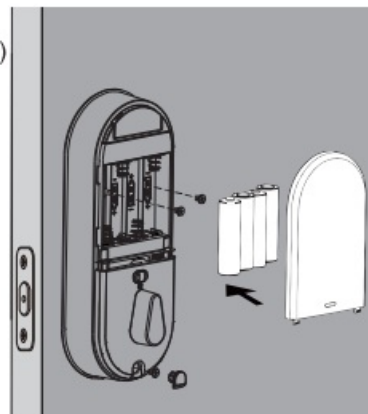
- B** Insert the cable into the connector. Push the connector in firmly until it is completely attached.



- C** Keep the thumb turn in vertical position and install the interior assembly.

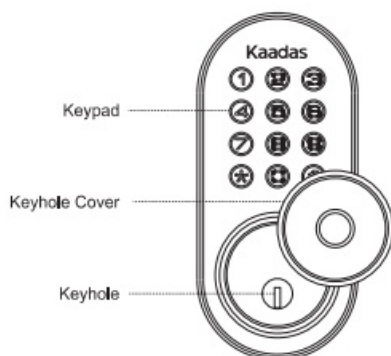


- E** Load 4 AA (1.5V) batteries (Not included) into the battery compartment.

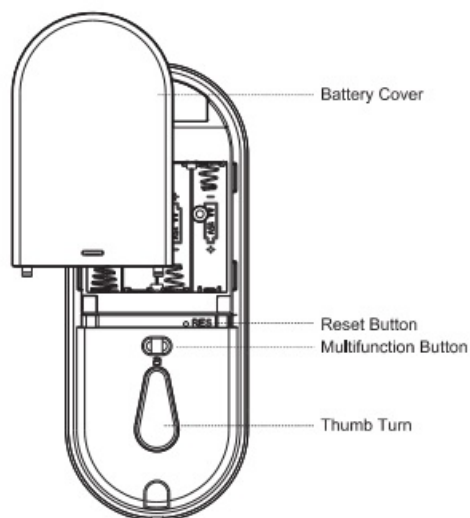


At a Glance

Exterior Assembly

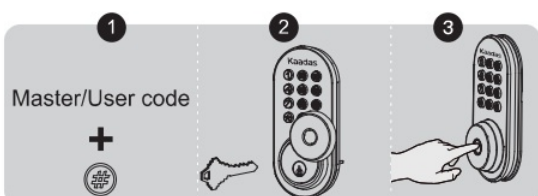


Interior Assembly

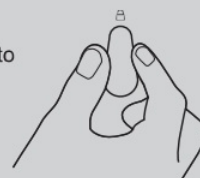


How to Lock/ Unlock

- UNLOCK the door from outside
- UNLOCK the door from inside
-

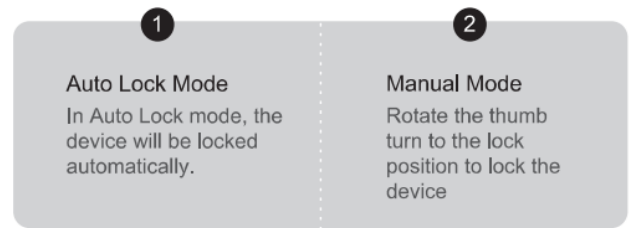
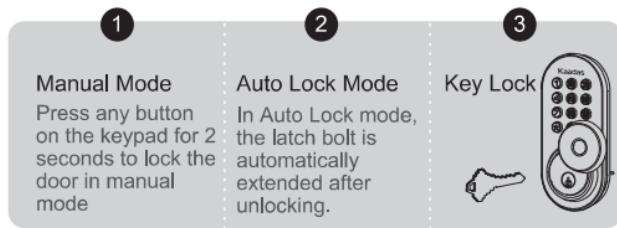


Rotate the thumb turn to Unlock position.



LOCK the door from outside

- LOCK the door from inside



Definitions

• MASTER CODE

- Required for programming and function settings. The master code can be used to unlock the door in away mode and private mode. The default master code must be changed before programming. The owner/manager should keep this information confidential.

• AUTO LOCK

- Automatically locks the latch 30 seconds after unlocking. This function is disabled by default. You can set the time delay for automatic locking between 10 and 180 seconds.

• WRONG CODE ENTRY LIMIT

- After 10 unsuccessful attempts to enter a valid PIN code, the device switches off for 3 minutes.

• AWAY MODE

- This is a safety feature for you when you leave your house for vacation or a long trip. When you activate the away mode, all user codes and user fingerprints will be locked until the master code is entered on the keypad. When the lock is unlocked by turning the thumb or key, an alarm will sound for 1 minute. By entering the master code on the keypad, you can disable the alarm and the away mode.

• SILENT MODE

- The sounds when pressing keypad can be muted. However, you will still hear low battery warnings and system alerts.

• MULTIFUNCTION BUTTON

- Push and hold the multifunction button on inside panel for 3 seconds to activate privacy mode. This will disable all user PIN code access. Privacy mode will be disabled automatically after unlock the door with the thumb turn or master PIN code.

• LOW BATTERY ALARM

- The batteries are getting low the battery indicator keeps flashing . Please replace with four new batteries for the best performance (alkaline batteries only).

• UNLOCK WITH FAKE CODE

- User can prevent pin code exposure from strangers by entering random digits before or after pin code.



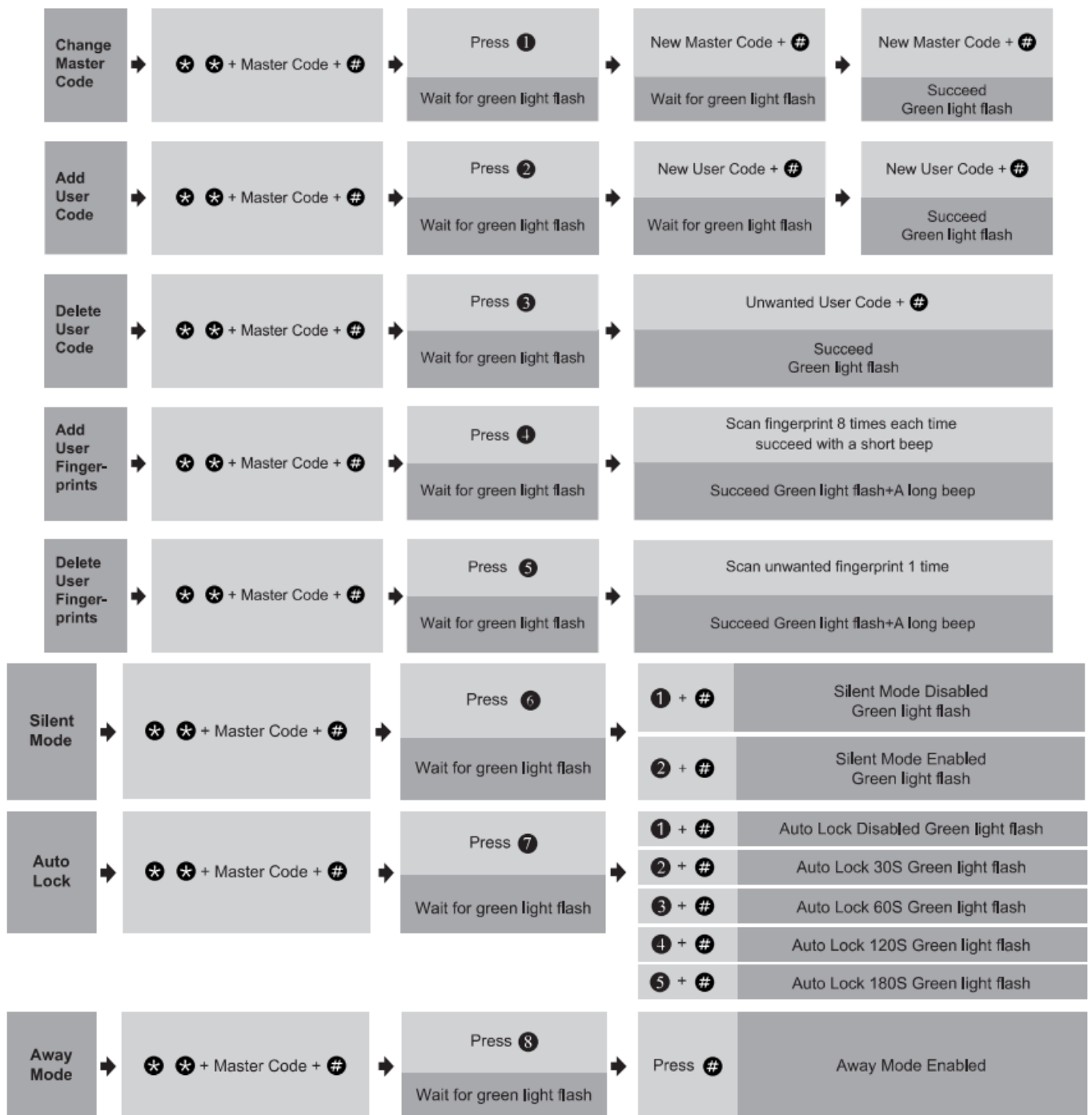
Code Format

1. **MasterCode(4 to 10 digits):** The default Master Code is...,=== It is required that you change it to a code of your own before programming.
2. **User Code (4 to 10 digits):** A total of 20 User Codes (including one temporary one-time User Code) can be programmed and stored.
3. Both Master Code and User Code don't support the following combination of numbers.

A.	<table border="1" style="display: inline-table; border-collapse: collapse;"> <tr><td>1</td><td>2</td><td>3</td><td>4</td><td>5</td><td>6</td><td>7</td><td>8</td><td>9</td></tr> </table>	1	2	3	4	5	6	7	8	9	✕	Forward number sequence
1	2	3	4	5	6	7	8	9				
B.	<table border="1" style="display: inline-table; border-collapse: collapse;"> <tr><td>9</td><td>8</td><td>7</td><td>6</td><td>5</td><td>4</td><td>3</td><td>2</td><td>1</td></tr> </table>	9	8	7	6	5	4	3	2	1	✕	Backward number sequence
9	8	7	6	5	4	3	2	1				
C.	<table border="1" style="display: inline-table; border-collapse: collapse;"> <tr><td>2</td><td>2</td><td>2</td><td>2</td><td>2</td><td>2</td><td>2</td><td>2</td><td>2</td></tr> </table>	2	2	2	2	2	2	2	2	2	✕	Repeat number sequence
2	2	2	2	2	2	2	2	2				
D. If	<table border="1" style="display: inline-table; border-collapse: collapse;"> <tr><td>5</td><td>6</td><td>8</td><td>3</td></tr> </table> ✓	5	6	8	3							
5	6	8	3									
Then	<table border="1" style="display: inline-table; border-collapse: collapse;"> <tr><td>5</td><td>6</td><td>8</td><td>3</td><td>9</td><td>1</td></tr> </table>	5	6	8	3	9	1	✕	Contain existing code sequence			
5	6	8	3	9	1							
and	<table border="1" style="display: inline-table; border-collapse: collapse;"> <tr><td>9</td><td>1</td><td>5</td><td>6</td><td>8</td><td>3</td></tr> </table>	9	1	5	6	8	3	✕				
9	1	5	6	8	3							

Quick Set Up

IMPORTANT: The default Master Code is 12345678 It is required that you change it to a code of your own before programming.



Notes:

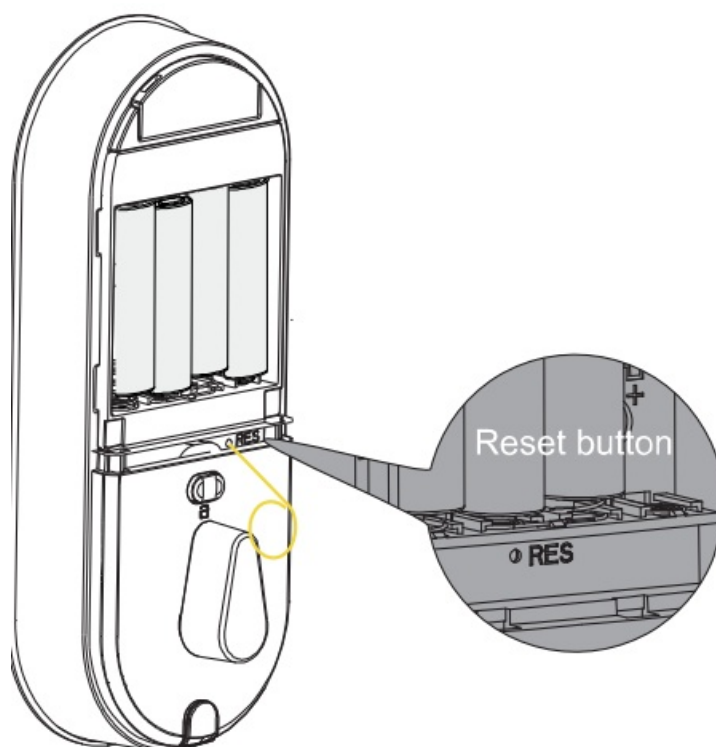
1. Beeps only sound when the Silent Mode is disabled.
2. If the indicators flash red light, it means your setting failed and it will require to re-enter master mode if you would like to continue your programming.

Factory Default Settings

How to Reset?

Resetting the device will delete all User PIN Codes and Master PIN Code stored in the lock.

1. Step 1. Keep the door open and the lock unlocked (thumb turn will be vertical).
2. Step 2. Using the Reset Tool, press and hold the Reset Button for 5 seconds until you hear the "BEEP" and the latch rotates, turning the thumb turn to the vertical position automatically.



Factory Default Settings	
Settings	Factory Default
Master Code	12345678
Auto Lock	Disabled
Silent Mode	Disabled
Wrong Code Entry Limit	10 times
Shutdown Time	3 mins
Away Mode	Disabled

Download KNde8 Home App from the App along or GOOIJ Pray.



Quick Set Up Tips

- Register an account in Kaadas Home App
- Scan QR code on the inside panel to add KA342 to the device list
- Follow the setup steps to get started.
- **IMPORTANT:**
 - The Auto Lock is disabled by default, please complete the set up process and enable Auto Lock in App.
- The administrator of the lock will be the first account to bind it by default. The administrator account have access to manage users of the lock.
- To reset the smart lock, please press and hold the Reset button on the interior panel for 5 seconds. Log in the App with Administrator account, go to setting and unbind the lock. (This step is required, if the administrator account didn't unbind the device, the lock won't be able to be repaired by other accounts.)

Troubleshooting

Problem	Solution
The latch does not operate correctly after installation.	<input type="checkbox"/> Make sure the backset on the latch is set to the proper length. Refer to Installation Guide <input type="checkbox"/> Make sure prior to installation latch bolt is retracted and key is not in lockset when installing the deadbolt. Refer to Installation Guide <input type="checkbox"/> Please restore to factory setting and enter the default Master Code to set up the lock. Refer to User Guide
Feel a bump while turning the thumb turn or the key?	Check if the length of mounting screws is correct.
Fail to set up the lock.	<input type="checkbox"/> Please make sure that the lock is installed correctly. <input type="checkbox"/> Please insert fresh batteries and make sure that the cable is properly connected. <input type="checkbox"/> After installation, reset the lock to factory settings to complete the lock setting process.
Keypad not responding.	<input type="checkbox"/> Please make sure that the batteries are inserted correctly <input type="checkbox"/> If the battery indicator flashes continuously, the batteries are almost empty. Please replace them with four new batteries for best performance (alkaline batteries only). <input type="checkbox"/> Please make sure that the cable is well connected to the connector and has not been damaged during installation <input type="checkbox"/> Please make sure the lock has been set up and complete the lock handing determination.
Master Code can not be changed.	Please refer to User Guide to restore factory settings and reprogram all codes.
I forgot my Master Codes.	Perform a reset to clear all PIN codes. Once the reset is complete, all PIN codes will be deleted and the master code will be reset to the default master PIN code 12345678.
"Auto lock" does not function.	If the battery indicator blinks continuously, the batteries are weak. Please replace them with four new batteries to get the best performance (alkaline batteries only). Please refer to the USER GUIDE to activate the AUTO LOCK function.
Fingerprint can't unlock.	Make sure the fingerprint is registered and recognizable.

FCC Statement

This equipment has been tested and found to comply with the limits for a Class B digital device, pursuant to part 15 of the FCC Rules. These limits are designed to provide reasonable protection against harmful interference in a residential installation. This equipment generates, uses and can radiate radio frequency energy and, if not installed and used in accordance with the instruction's, may cause harmful interference to radio communications. However, there is no guarantee that interference will not occur in a particular installation.

- If this equipment does cause harmful interference to radio or television reception, which can be determined by turning the equipment off and on, the user is encouraged to try to correct the interference by one or more of the following measures:
 - Reorient or relocate the receiving antenna.
 - Increase the separation between the equipment and receiver.
 - Connect the equipment into an outlet on a circuit different from that to which the receiver is connected.
 - Consult the dealer or an experienced radio/TV technician for help.

caution: Any changes or modifications to this device not explicitly approved by manufacturer could void your authority to operate this equipment.

This device complies with part 15 of the FCC Rules.

Operation is subject to the following two conditions:

1. This device may not cause harmful interference, and
2. This device must accept any interference received, including interference that may cause undesired operation.

RF Exposure Information

This equipment complies with FCC radiation exposure limits set forth for an uncontrolled environment. This

equipment should be installed and operated with minimum distance 20cm between the radiator and your body.

ISED Statement

This device contains licence-exempt transmitter(s)/receiver(s) that comply with Innovation, Science and Economic Development Canada's licence-exempt RSS(s).

Operation is subject to the following two conditions:

1. This device may not cause interference.
2. This device must accept any interference, including interference that may cause undesired operation of the device.

Warnings

- Failure to follow the below instructions could result in damage to the product and void the factory warranty.
- This manufacturer advises that no lock can provide complete security by itself.
- This lock may be defeated by forcible or technical means, or evaded by entry elsewhere on the property.
- No lock can substitute for caution, awareness of your environment, and common sense.

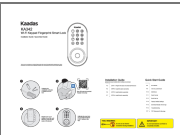
Product Care:

- This lockset is designed to provide the highest standard of product quality and performance. Care should be taken to ensure a long-lasting finish.
- When cleaning is required, use a soft, – damp cloth. Using lacquer thinner, caustic soaps, abrasive cleaners or polishes could damage the coating and result in tarnishing.
- Avoid exposure to direct sunlight Long-term exposure to direct sunlight may damage the lock.

Do not install batteries until the lock is completely installed on door.

- **User Pin Codes:** Can be 4-10 digits and can be set up in Kaadas Home App.
- **Door sensor calibration:** To calibrate your door, please follow the instruction in App step by step. Once it's calibrated successfully, you could try detect the status of your door in Kaadas Home.
- **Share your device:** Share your device means that you share the access to track the device with your other users, please be aware of the potential risks it may cause.

Documents / Resources

	<p>Kaadas KA342 Wifi Keypad Fingerprint Smart Lock [pdf] Installation Guide</p> <p>Kaadas KA342 Wifi Keypad Fingerprint Smart Lock, KA342, Wifi Keypad Fingerprint Smart Lock, Keypad Fingerprint Smart Lock, Fingerprint Smart Lock, Smart Lock, Lock</p>
---	--

References

- [User Manual](#)

[Manuals+](#), [Privacy Policy](#)

This website is an independent publication and is neither affiliated with nor endorsed by any of the trademark owners. The "Bluetooth®" word mark and logos are registered trademarks owned by Bluetooth SIG, Inc. The "Wi-Fi®" word mark and logos are registered trademarks owned by the Wi-Fi Alliance. Any use of these marks on this website does not imply any affiliation with or endorsement.