



Kaadas KA210A Smart Key Free Touchscreen Lock with Fingerprint Installation Guide

[Home](#) » [Kaadas](#) » Kaadas KA210A Smart Key Free Touchscreen Lock with Fingerprint Installation Guide 

Kaadas

**KA210A
Smart Key-Free
Touchscreen Lock
With Fingerprint
Installation Guide / Quick Start Guide**



Thank you for purchasing our products. Please review this manual thoroughly before operating your device. All pictures in this manual are for Mlustration purpose only. Actual product may vary due to product upgrade.

Contents

- [1 Installation Guide](#)
- [2 Quick Sart Guide](#)
- [3 Parts List](#)
- [4 STEP 1 Prepare the door and check dimensions](#)
- [5 STEP 2 Install the latch and strike](#)
- [6 STEP 3 Install exterior assembly](#)
- [7 STEP4 Install interior assembly](#)
- [8 STEP 5 Insert batteries to calibrate the lock handing process.](#)
- [9 How to Lock / Unlock](#)
- [10 At a Glance](#)
- [11 Definitions](#)
- [12 Code Format](#)
- [13 Z-Wave™ Module installation and user guide](#)
- [14 Quick Set Up](#)
- [15 Factory Default Settings](#)
- [16 Download Kaadas Home App](#)
- [17 Warnings](#)
- [18 Documents / Resources](#)
 - [18.1 References](#)

Installation Guide

Read this manual carefully before installing and operating.

P3| STEP 1: Prepare the door and check dimensions

P4 | STEP2 Install the latch and strike

P6 | STEP3:Install exterior assembly

P7 | STEP4 Installinterior assembly

P8 | STEP 5 nsert batteries to calibrate the lock handing process

Quick Sart Guide

P9 | AtaGlance

P10 | How to Lock/Unlock

P11 | Definitions

P12 | Code Format

P13 | z-Wave™ Module installation and user guide

P14 | Quick SetUp

P16 | Factory Default Settings

P17 | Download Kaadas Home App

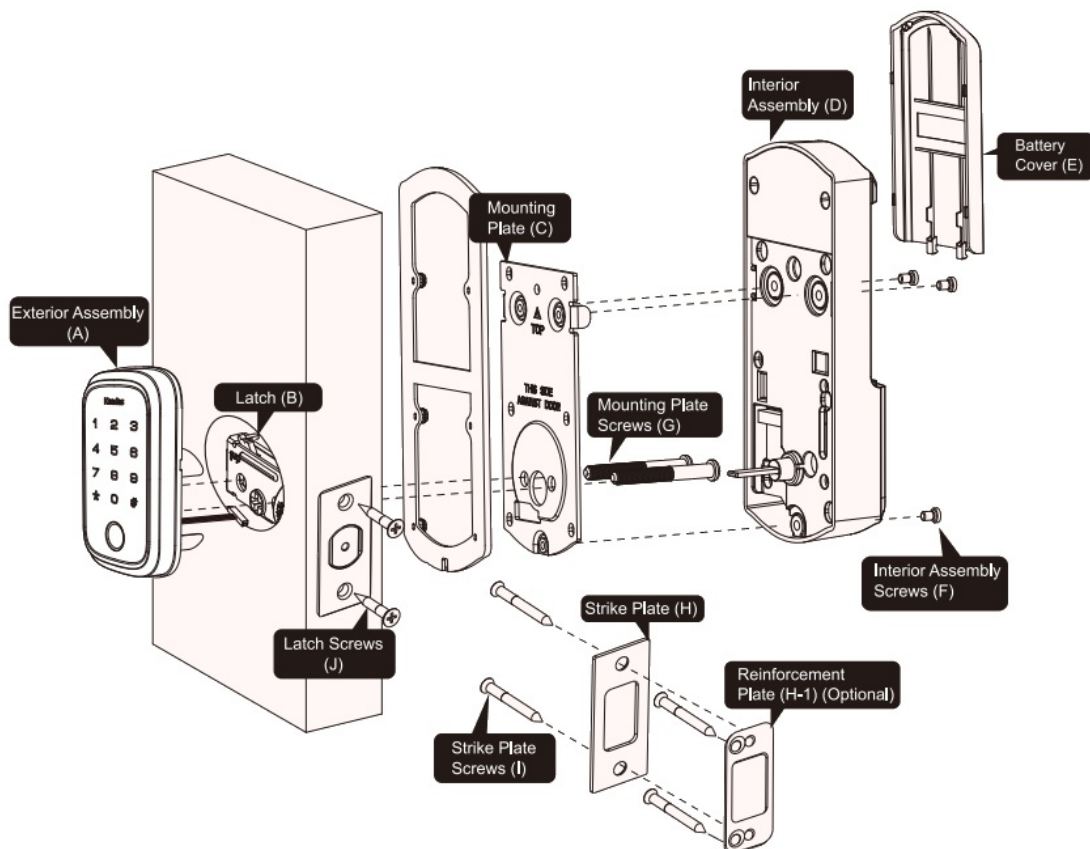
P18 | Troubleshooting

P19 | FCC Statement & Warnings


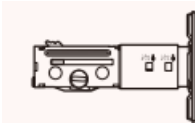

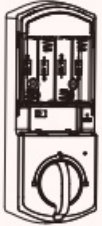


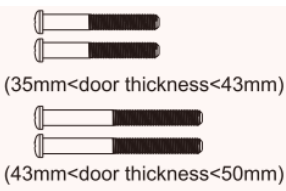

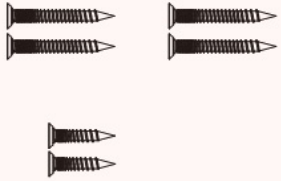
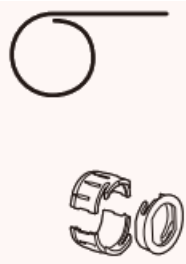


Do not use an electronic scwdriver or drill during installation.



IMPORTANT: Do not load batteries until the lock is completely installed.



Parts List

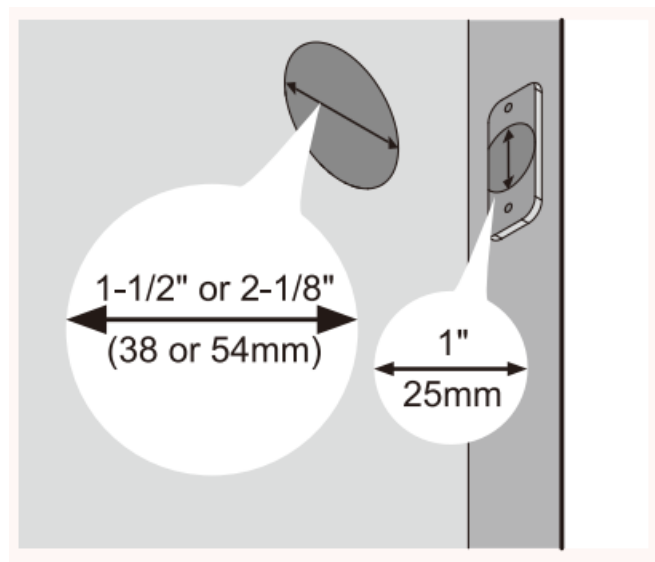
A Exterior Assembly x1	B Latch x1	C Mounting Plate x1	Interior Assembly x1
			
E Battery Cover x1	F Interior Assembly Screws x3	G Mounting Plate Screws x4	H Strike Plate x1 H-1 Reinforcement Plate x1 (optional)
		 (35mm<door thickness<43mm) (43mm<door thickness<50mm)	
I Strike Plate Screws x4 J Latch Screws x2	K Reset Tool L Drive-In Collar (Optional)	M Z-Wave Module (Optional)	N AA Battery x4
			

STEP 1 Prepare the door and check dimensions

A

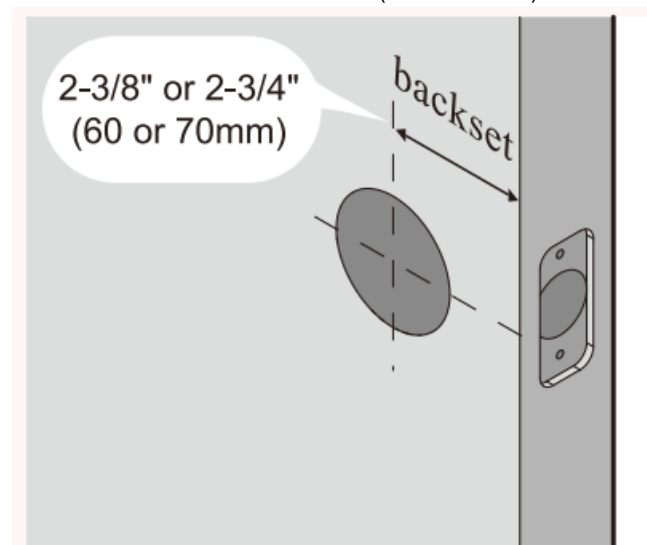
Measure to confirm that the bore hole is 1-11/16" or 2-1/8" (38mm or 54mm).

Measure to confirm that the hole in the door edge is 1" (25mm),



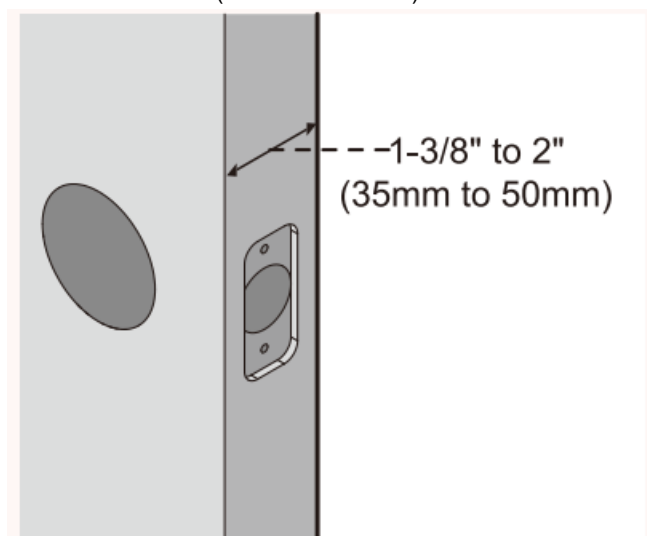
B

Measure to confirm that the backset is either $2\frac{3}{8}"$ or $2\frac{3}{4}"$ (60 or 70mm)



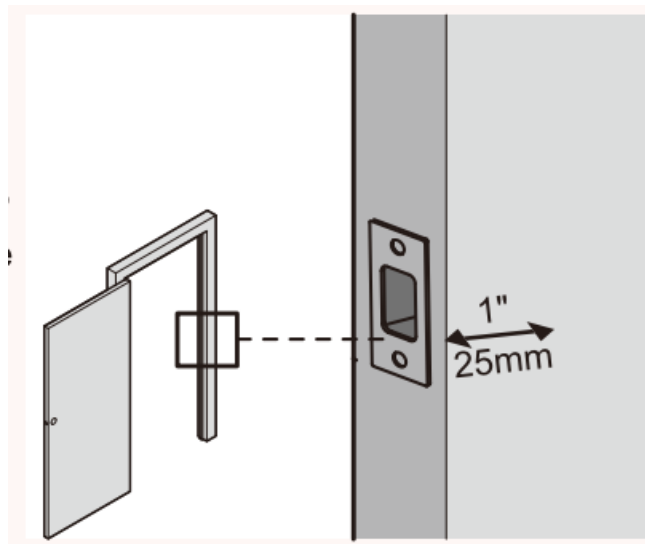
C

Measure to confirm that the door is $1\frac{3}{8}"$ to 2" (35mm to 50mm) thick.



D

Make sure the hole in the door frame is drilled a minimum of 1" (25mm) deep, to leave enough space for the " deadbolt to extend into the door frame when the door is locked.

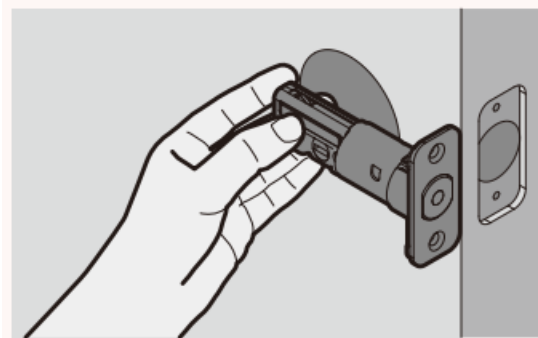


Notes: Make sure the door frame is aligned with the door and there are no obstructions stuck in the door frame.

STEP 2 Install the latch and strike

A

Determine backset and adjust the latch.

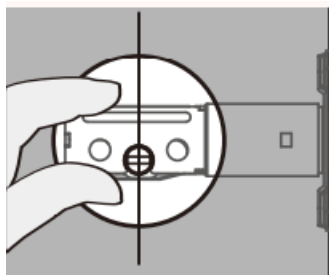


Hold the latch in front of the bore hole, with the latch face flush against the door edge. Is the slotted hole centered in the door hole?

YES

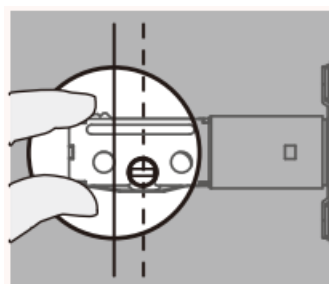
No adjustment is required.

Proceed to next step

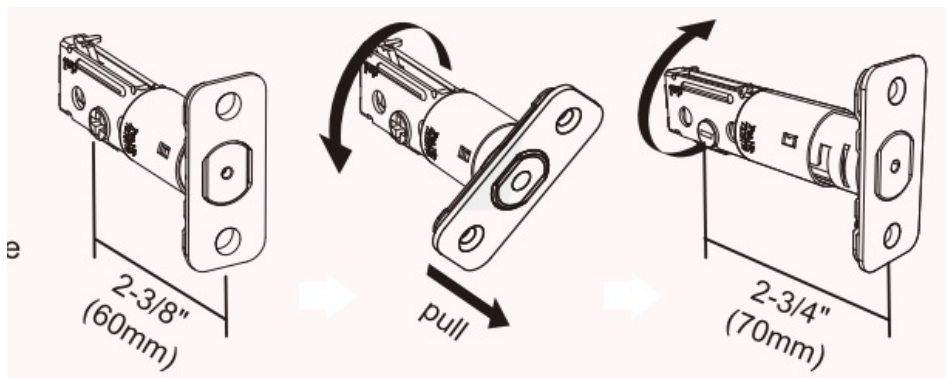


NO

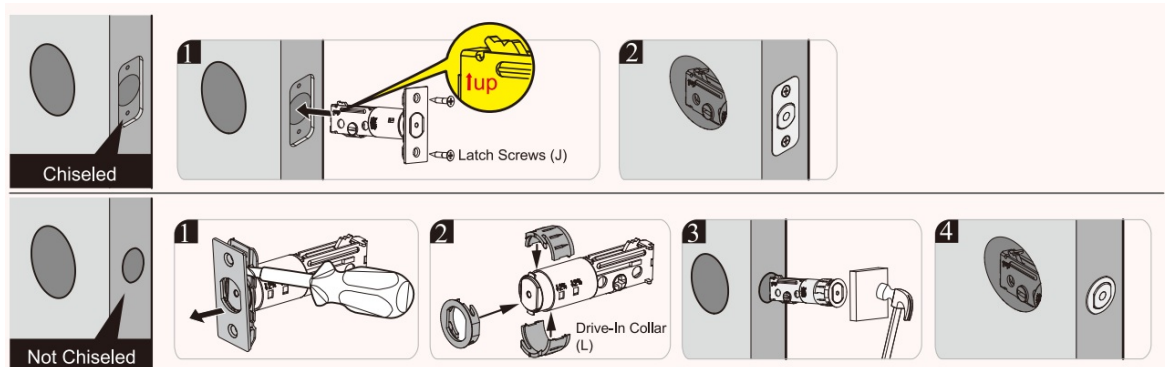
Slotted hole is NOT centered.



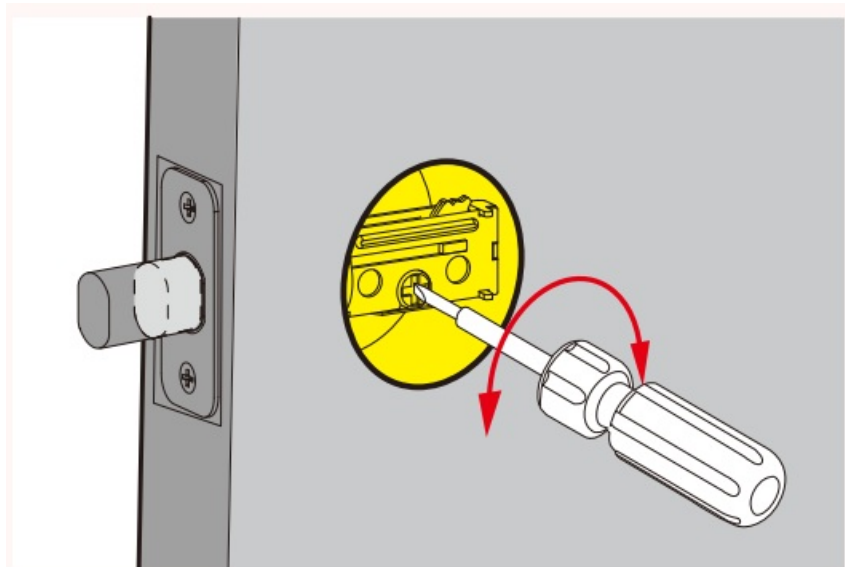
Rotate and pull the latch as shown to extend latch.



B
Install the latch.



C
Use a screwdriver to test if deadbolt works smoothy.

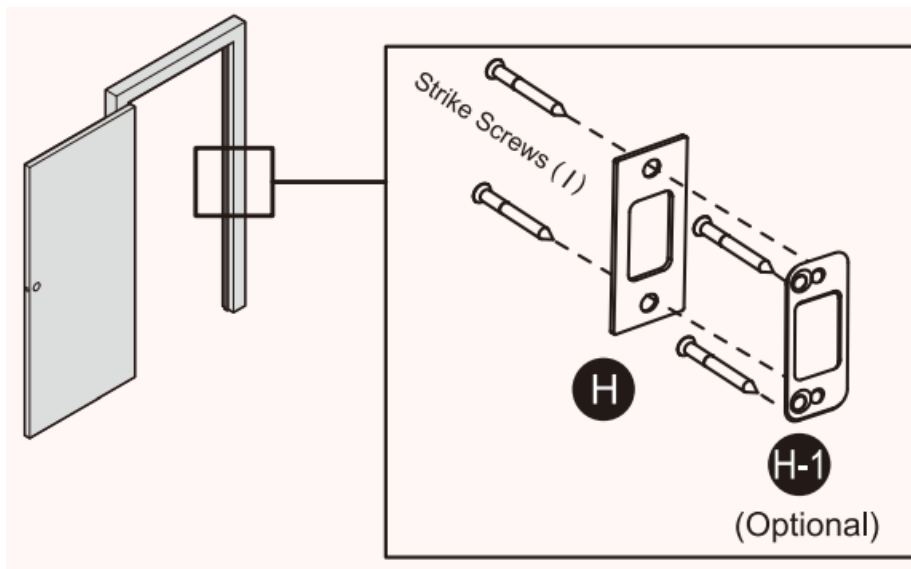


D
Install strike on the door frame.



IMPORTANT:

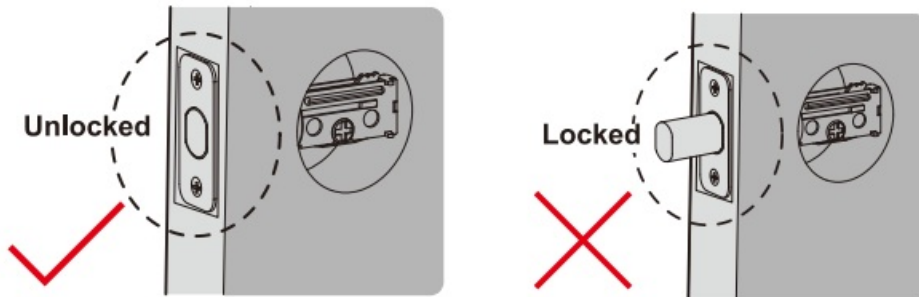
Make sure the hole in door frame is drilled a minimum of 1" (25mm) deep.



STEP 3 Install exterior assembly

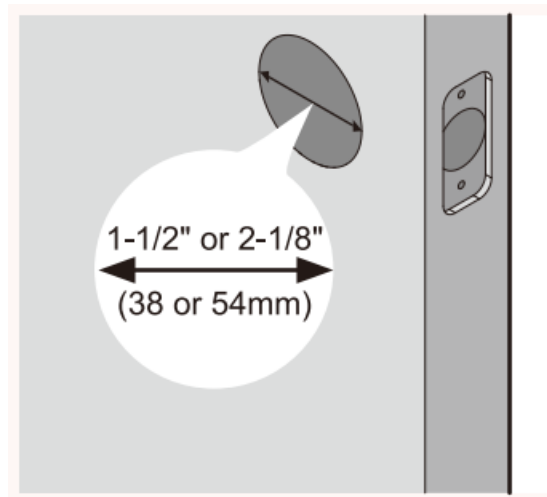
IMPORTANT:

Before installation, make sure the latch is fully retracted (in the unlocked position)

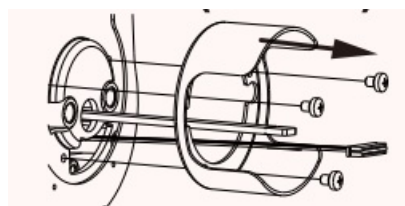


A

Measure the diameter of the hole in the door.



1-1/2" (38mm)



Remove the fire cup

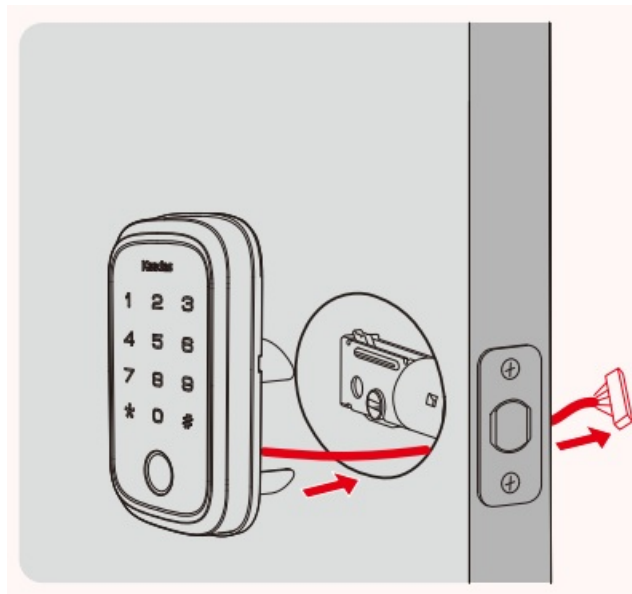
Note: Remove the fire cup may impact fire rating

2-1/8" (54mm)

Proceed to next step

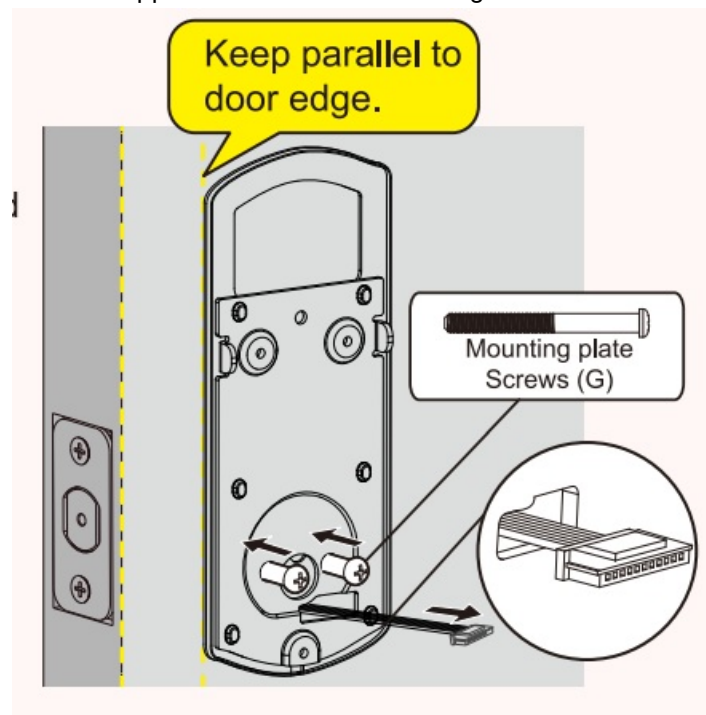
B

With the latch bolt fully retracted (in the unlocked position), route the cable from the exterior keypad assembly below the latch.



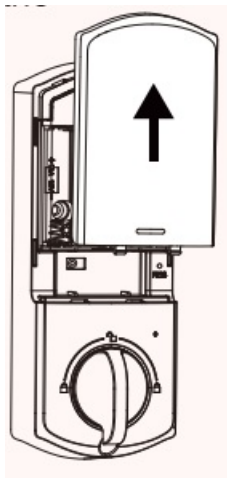
C

Secure the mounting plate with the supplied screws. Do not overtighten screws.



STEP4 Install interior assembly

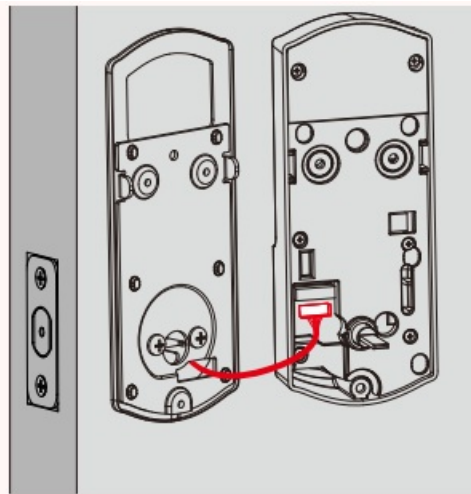
A Push the battery cover up in the direction as illustrated.



B

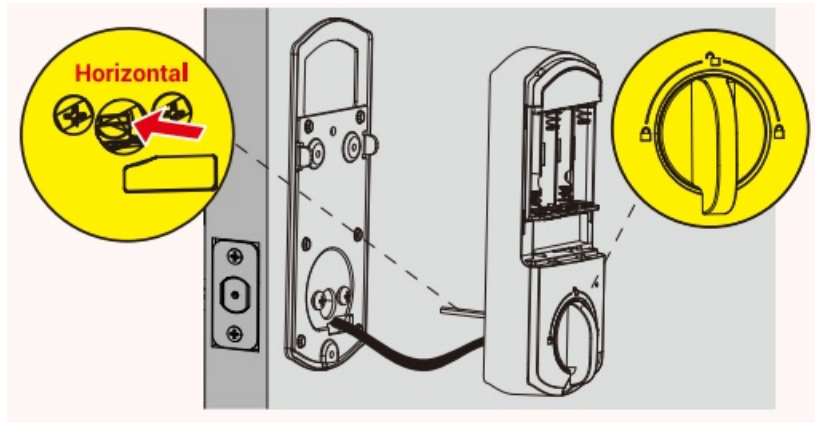
Insert the cable into the connector.

Push the connector in firmly until it is completely attached.



C

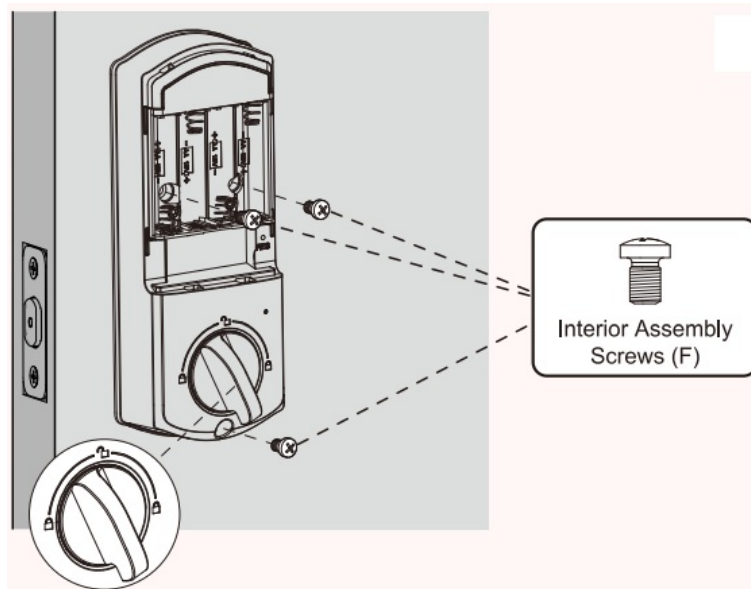
Keep the thumb turn in the vertical position and install the interior assembly.



D

Attach interior assembly to mounting plate and tighten 3 screws.

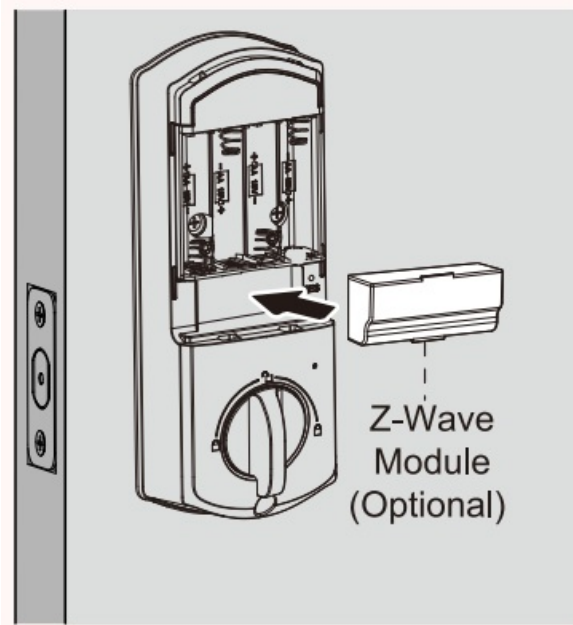
*The thumbtum can be moved slightly to facilitate the installation of the third screw.



E

Insert the Z-Wave module and make sure the network Module is securely plugged in.

Note: Before inserting the module, make sure the lock does not have a battery installed.



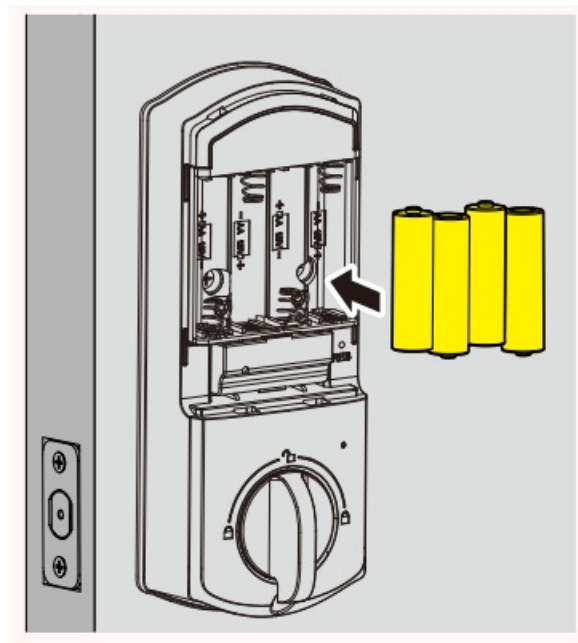
STEP 5 Insert batteries to calibrate the lock handing process.



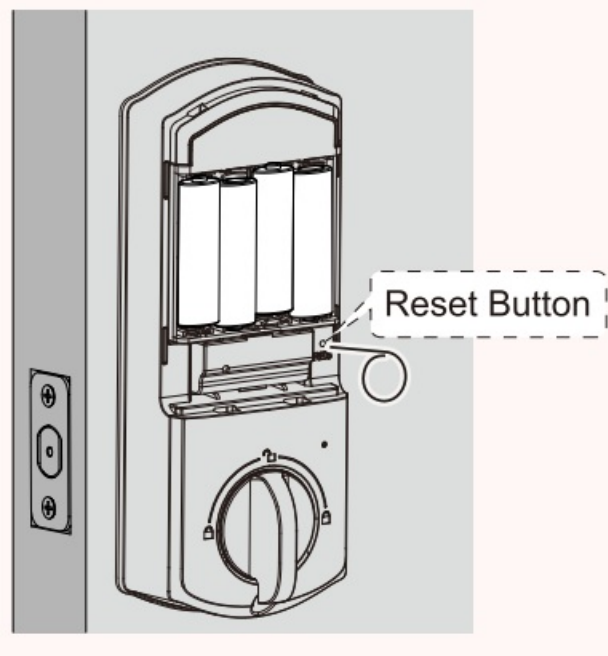
IMPORTANT: This step is required and crucial for the lock after installation.

A

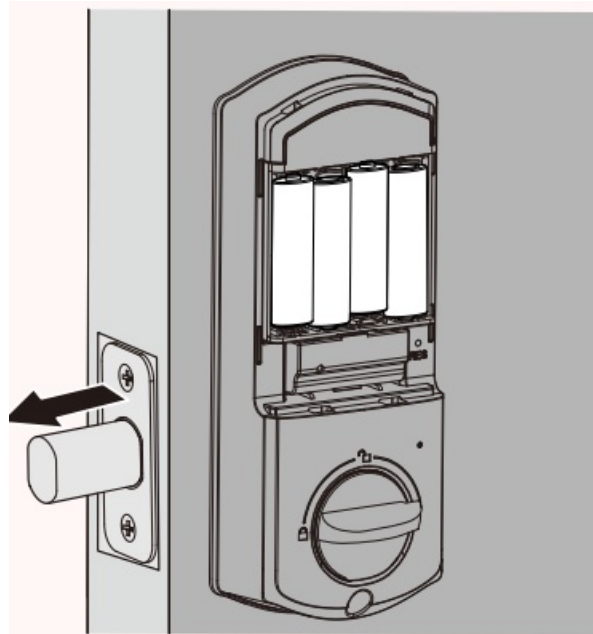
With the device unlocked, insert 4 AA alkaline batteries into the battery pack.



B
Use the Reset Tool to press and hold the Reset Button for more 5 seconds until you hear a long “BEEP”.



C
If the reset is successful, the latch bolt will extend on its own to learn the handing orientation of the door.



How to Lock / Unlock

Unlocking the door from outside

1. Master/ User PIN Code



2. Fingerprint



3. Kaadas Home App /Z-Wave System App



Locking the door from outside

1. Manually

Press any button on the keypad for 1 second to lock the door.

2. Auto Lock Mode

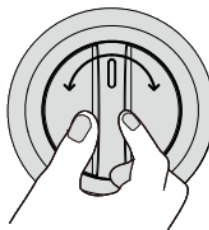
In Auto Lock Mode, the latch bolt is automatically extended after unlocking.

3. Kaadas Home App /Z-Wave System App



Unlocking the door from inside

1. Rotate the thumb, turn to the unlock position.



2. Kaadas Home App /Z-Wave System App



Locking the door from inside

1. Manually

Rotate the thumb turn to the lock position.

2. Auto Lock Mode

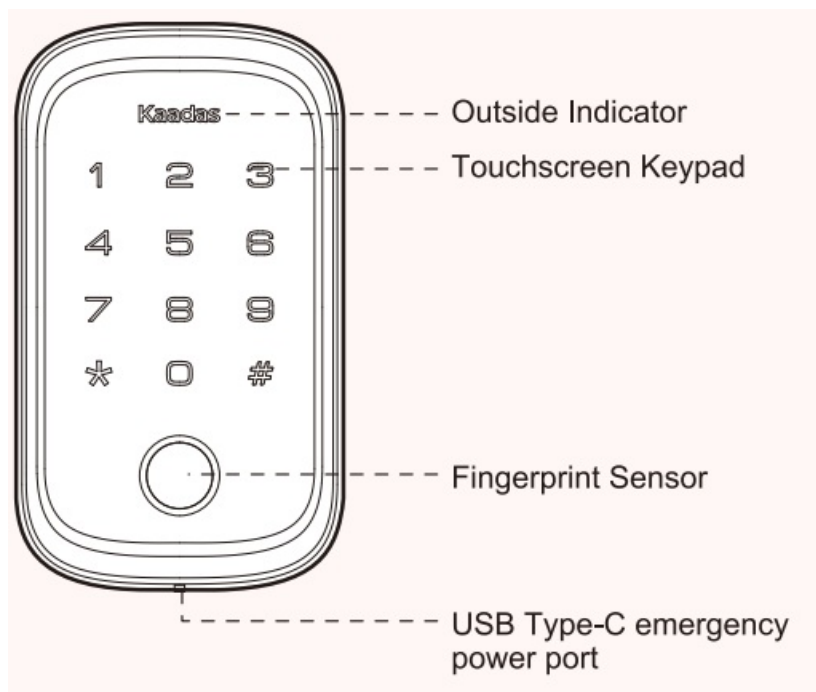
In Auto Lock mode, the device will be locked automatically.

3. Kaadas Home App /Z-Wave System App

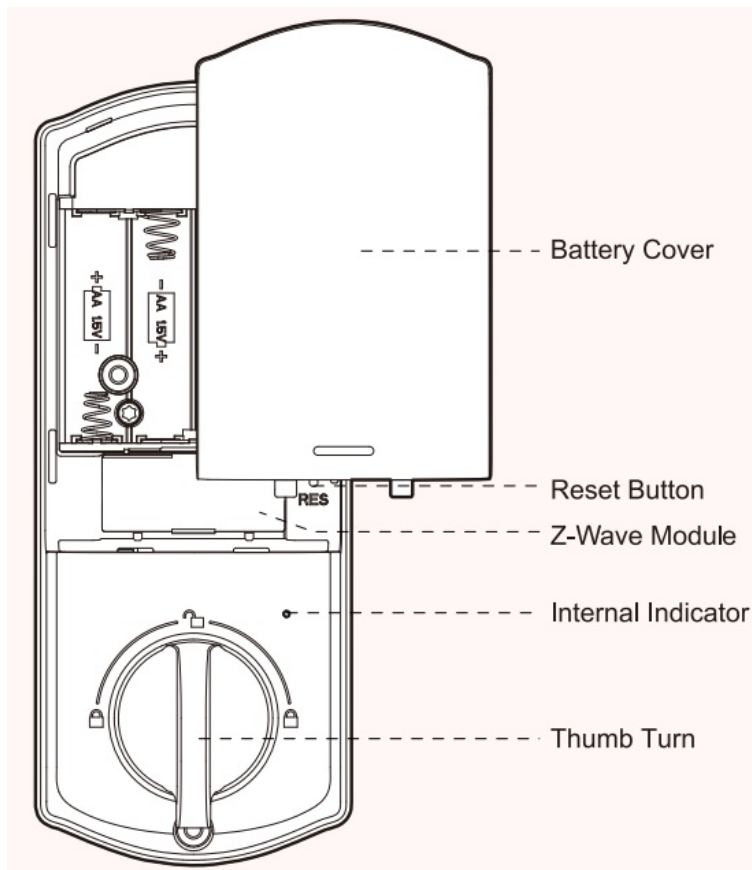


At a Glance

Exterior Assembly



Interior Assembly



Definitions

Master PIN Code

Required for programming and feature settings, the Master PIN Code can be used to unlock the door while in away mode. The default Master PIN Code needs to be changed before programming the lock for security reasons.

Auto Lock

If the Auto lock feature is enabled, the lock will lock the door 30 seconds after it has been unlocked. This feature is off by default. You can set the time delay for 30s, 60, 120s and 180s in both Master Mode and the Kaadas Home App.

Wrong Entry PIN Code Limit

After 10 attempts of entering an invalid User PIN Code or Fingerprint, the unit will shut down for 3 minutes.

Away Mode

This is a safety feature for you when you leave your house for vacation or a long trip. When you activate Away Mode, all User PIN Codes and user fingerprints will be locked until the Master PIN Code is entered on the keypad. When the lock is unlocked by, an alarm will 'sound for 1 minute. By entering the Master PIN Code on the keypad, You can disable the alarm and Away Mode.

Silent Mode

The beep sounds when pressing keypad can be muted. But you will still hear low battery and system alerts.

One Time User Code

This code can only be used once and is automatically deleted after used,

Low Battery Alarm

If the battery indicator keeps flashing, the batteries are getting low.

For the best performance replace with four new AA alkaline batteries.

Code Format

1. Master PIN Code (4 to 10 digits): The default Master PIN Code 12345678. Change the default Master PIN Code

before programming other codes.

2. User PIN Code (4 to 10 digits): A total of 250 User PIN Codes (including One-Time PIN Code) can be programmed and stored in the lock.
3. Both Master and User PIN Codes do not support the following combination of numbers.

A.	1	2	3	4	5	6	7	8	9	×	Forward number sequence
B.	9	8	7	6	5	4	3	2	1	×	Backward number sequence
C.	2	2	2	2	2	2	2	2	2	×	Repeat number sequence
D. If	5	6	8	3	✓						
then	5	6	8	3	9	1				×	
and	9	1	5	6	8	3				×	Contain existing code sequence

Z-Wave™ Module installation and user guide

(Optional network module required)

1. Make sure the network Module is securely plugged in, see page 7, step 4, section E for details.
2. Open the Z-Wave system's smart home or alarm app on your smartphone or tablet and follow the instructions in the app for adding a new smart lock.
3. Touch the lock keypad with your hand to activate the lock
4. Enter the Master Mode by Pressing * * + master PIN code (the default master PIN code is 12345678) + #
5. Press the 0 key + # key to enter the Network settings.
6. Press the 1 key + # key to add the module (smart lock) to your Z-Wave system; Press the 2 key + # key to remove the module (smart lock) from your Z-Wave system.

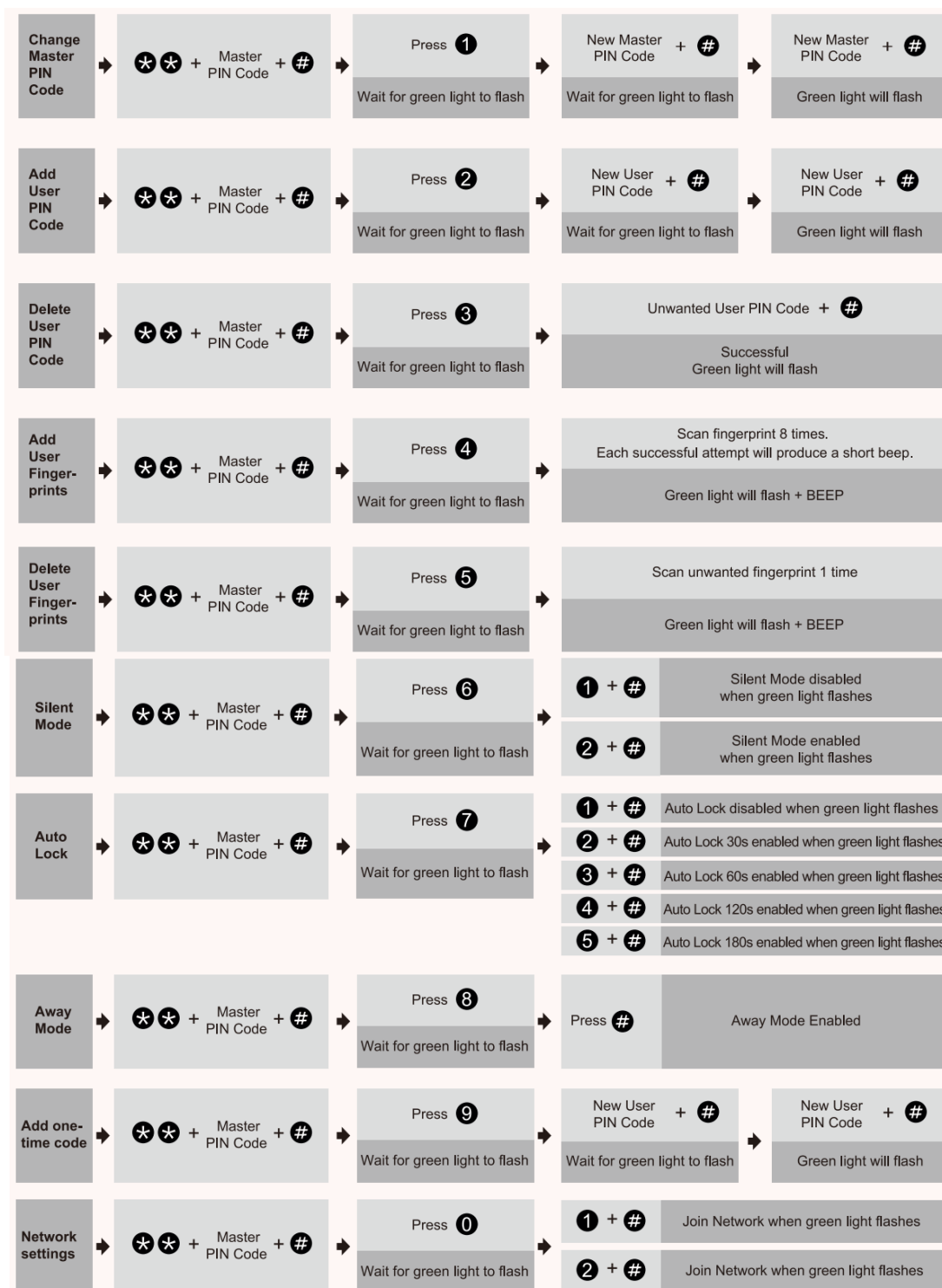
Quick Set Up



IMPORTANT:

The default Master Code is 12346678 .

It is required that you change it to a code of your own before programming.



Notes:

1. Beeps only sound when the Silent Mode is disabled.
2. If the indicator light flashes red, your setting failed and you will need to redo the operation.

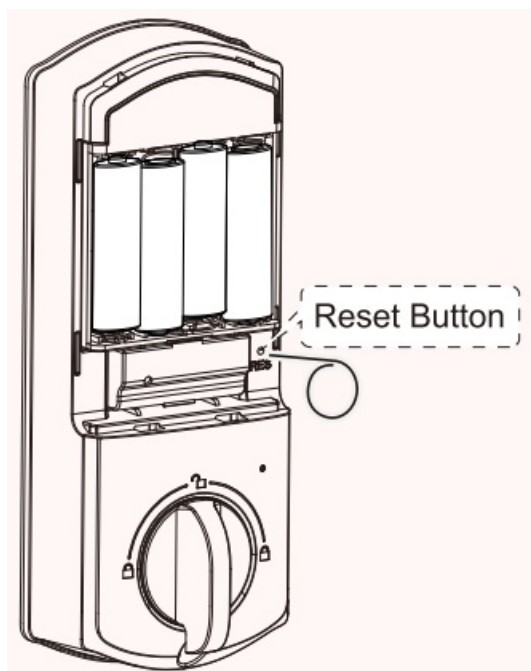
Factory Default Settings

How to Reset ?

Resetting the device will delete all User PIN Codes and Master PIN Code stored in the lock.

Step 1. Keep the door open and the lock unlocked (thumb turn will be vertical).

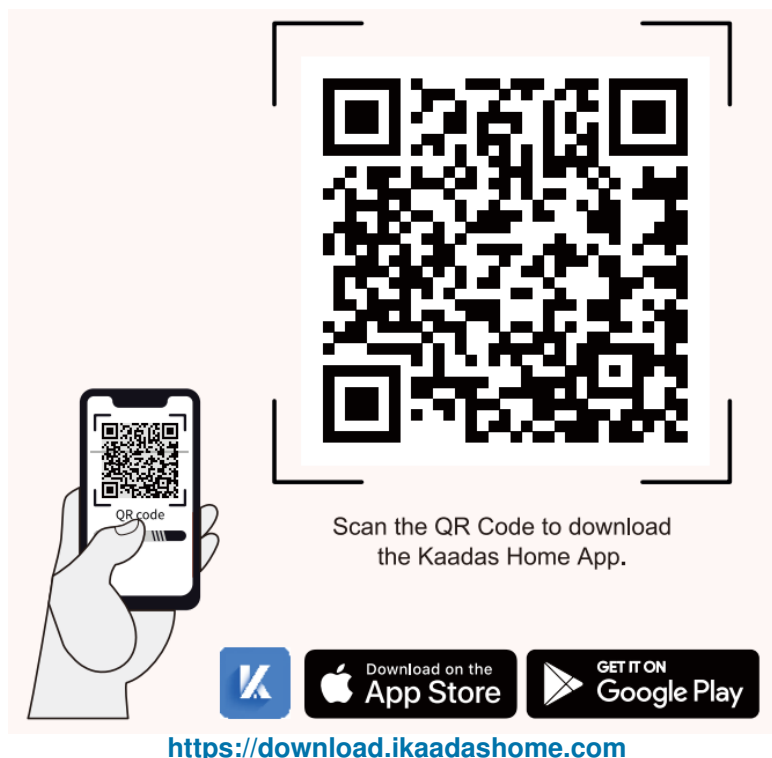
Step 2. Using the Reset Tool, press and hold the Reset Button for 5 seconds until you hear the “BEEP” and the latch rotates, turning the thumb turn to the vertical position automatically.



Settings	Factory Default
Master Code	12345678
Auto Lock	Disabled
Sient Mode	Disabled
Wrong Code Entry Limit	10tmes
'Shutdown Time	3 Minutos
Away Moge	Disabled

Download Kaadas Home App

Download the Kaadas Home App from the Apple Store or Google Play Store.



Quick Set Up Tips.

- Create an account in the Kaadas Home App.
- Scan the QR Code found on the inside panel of the Battery Cover to add your KA210A to the device list.

IMPORTANT:

- The Auto Lock is disabled by default, please complete the set up process and enable Auto Lock in the Kaadas Home App.
- The first account to add the lock to their account becomes the administrator of the lock by default. Only the administrator account can manage users of the lock.
- To reset the lock, press and hold the Reset Button for 5 seconds until you hear the "BEEP", Log in to the Kaadas Home App with the administrator account. Go to Settings and unbind the lock.

FCC Statement

"This equipment has been tested and found to comply with the limits for a Class B digital device, pursuant to part 15 of the FCC Rules. These limits are designed to provide reasonable protection against harmful interference in a residential installation. This equipment generates, uses and can radiate radio frequency energy and, if not installed and used in accordance with the instructions, may cause harmful interference to radio communications. However, there is no guarantee that interference will not occur in a particular installation. If this equipment does cause harmful interference to radio or television reception, which can be determined by turning the equipment off and on, the user is encouraged to try to correct the interference by one of the following measures:

- Reorient or relocate the receiving antenna,
- Increase the separation between the equipment and receiver.
- Connect the equipment into an outlet on a circuit different from that to which the receiver is connected.
- Consult the dealer or an experienced radio/TV technician for help.

Caution: Any changes or modifications to this device not explicitly approved by manufacturer could void your authority to operate this equipment

"This device complies with part 15 of the FCC Rules. Operation is subject to the following two conditions: (1) This device may not cause harmful interference, and (2) this device must accept any interference received, including interference that may cause undesired operation

RF Exposure Information

"This equipment complies with FCC radiation exposure limits set forth for an uncontrolled environment. This equipment should be installed and operated with minimum distance 20cm between the radiator and your body.

ISED Statement

This device contains licence-exempt transmitter(s) /receiver(s) that comply with Innovation, Science and Economic Development Canada's licence-exempt RSS(s). Operation is subject to the following two conditions:

1. This device may not cause interference.
2. This device must accept any interference, including interference that may cause undesired operation of the device.

The digital apparatus complies with Canadian CAN ICES-3 (B)/NMB-3(B).

This device meets the exemption from the routine evaluation limits in section 2.5.0f RSS 102 and compliance with RSS 102 RF exposure, users can obtain 'Canadian information on RF exposure and compliance.

This equipment complies with Canada radiation exposure limits set forth for an uncontrolled environment.

This equipment should be installed and operated with minimum distance 20cm between the radiator & your body.

Warnings

Failure to follow the below instructions could result in damage to the product and void the factory warranty.

This manufacturer advises that no lock can provide complete security by itself

This lock may be defeated by forcible or technical means, or evaded by entry elsewhere on the property.

No lock can substitute for caution, awareness of your environment, and Common sense.

Product Care:

- This lockset is designed to provide the highest standard of product quality and performance. Care should be taken to ensure a long-lasting finish. When cleaning is required, use a soft, damp cloth. Using lacquer thinner, caustic soaps, abrasive cleaners or polishes could damage the coating and result in tarnishing.
- Avoid exposure to direct sunlight, Long-term exposure to direct sunlight may damage the lock.
Do not install batteries until the lock is completely installed on door.
- User PIN Codes: Can be 4-10 digits and can be set up in the Kaadas Home App.
- Auto handling calibration: To calibrate your lock, follow the instructions in the Kaadas Home App step by step.
- Sharing Access: Sharing access to your lock means that you are allowing other users to control and track usage of the device. Please be aware of the potential risks it may cause.

Kaadas

Documents / Resources



[Kaadas KA210A Smart Key Free Touchscreen Lock with Fingerprint](#) [pdf] Installation Guide
KA210A Smart Key Free Touchscreen Lock with Fingerprint, KA210A, Smart Key Free Touchscreen Lock with Fingerprint, Free Touchscreen Lock with Fingerprint, Touchscreen Lock with Fingerprint, Lock with Fingerprint, with Fingerprint, Fingerprint

References

- User Manual

Manuals+, Privacy Policy

This website is an independent publication and is neither affiliated with nor endorsed by any of the trademark owners. The "Bluetooth®" word mark and logos are registered trademarks owned by Bluetooth SIG, Inc. The "Wi-Fi®" word mark and logos are registered trademarks owned by the Wi-Fi Alliance. Any use of these marks on this website does not imply any affiliation with or endorsement.