

Kaadas KA210 Smart Key-Free Touchscreen Lock



Kaadas KA210 Smart Key-Free Touchscreen Lock Installation Guide

[Home](#) » [Kaadas](#) » Kaadas KA210 Smart Key-Free Touchscreen Lock Installation Guide 

Contents

- 1 Kaadas KA210 Smart Key-Free Touchscreen Lock
- 2 Installation Guide
- 3 Parts List
- 4 Prepare the door and check dimensions
- 5 Installation
- 6 QUICK START GUIDE
- 7 How to Lock/ Unlock
- 8 Definitions
- 9 Code Format
- 10 Quick Set Up
- 11 Factory Default Settings
- 12 Download Kaadas Home App
- 13 Troubleshooting
- 14 FCC Statement
- 15 Documents / Resources
 - 15.1 References

Kaadas

Kaadas KA210 Smart Key-Free Touchscreen Lock



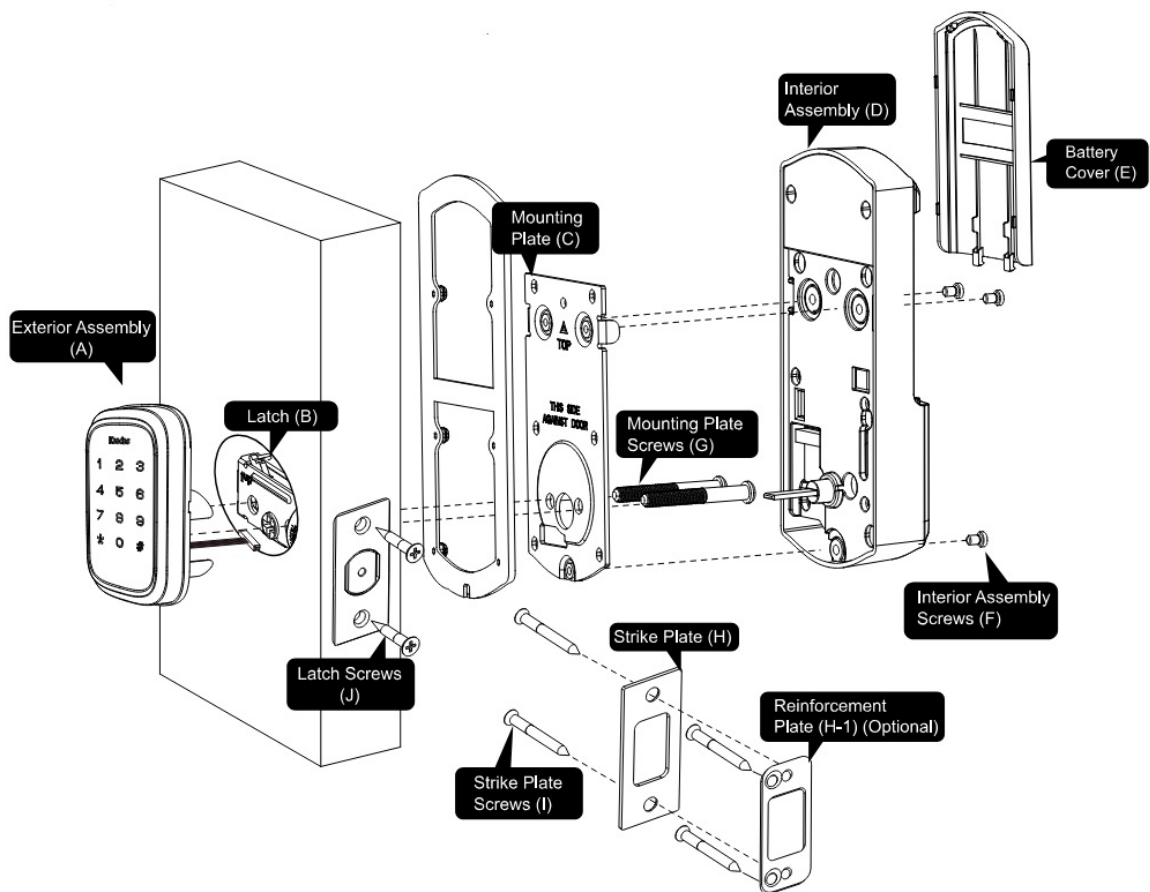
Thank you for purchasing our products. Please review this manual thoroughly before operating your device. All pictures in this manual are for illustration purpose only. Actual product may vary due to product upgrade.

- Do not use an electronic screwdriver or drill during installation.


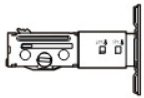

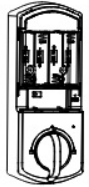






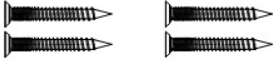





IMPORTANT:

- Do not load batteries until the lock is completely installed

Installation Guide



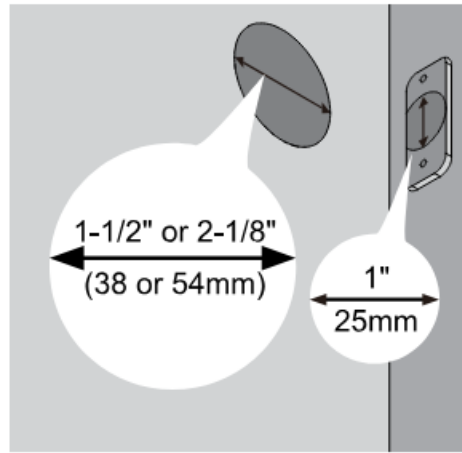
Parts List

A Exterior Assembly x1 	B Latch x1 	C Mounting Plate x1 	D Interior Assembly x1 
E Battery Cover x1 	F Interior Assembly Screws x3 	G Mounting Plate Screws x4  (35mm<door thickness<43mm)  (43mm<door thickness<50mm)	H Strike Plate x1  H-1 Reinforcement Plate x1 (optional) 
I Strike Plate Screws x4  J Latch Screws x2 	K Reset Tool  L Drive-In Collar (Optional) 	M Z-Wave Module (Optional) 	N AA Battery x4 

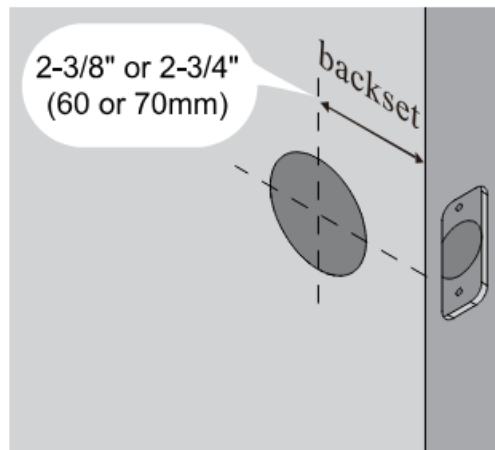
Prepare the door and check dimensions

- A Measure to confirm that the bore hole is 1-1/2" or 2-1/8" (38mm or 54mm). Measure to confirm that the hole

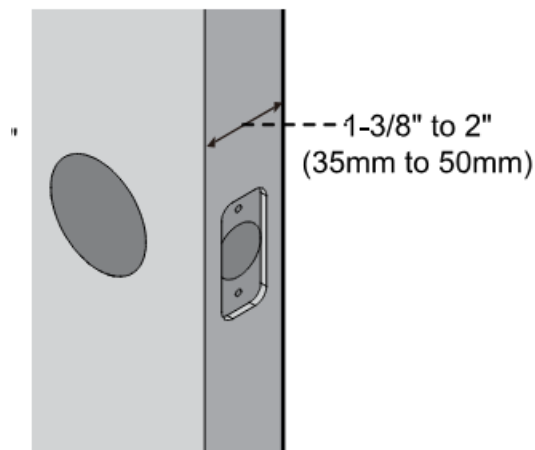
in the door edge is 1" (25mm).



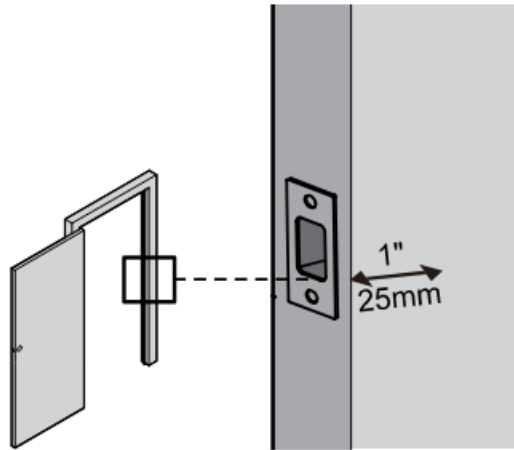
- B Measure to confirm that the backset is either 2-3/8" or 2-3/4" (60 or 70mm)



- C Measure to confirm that the door is 1-3/8" to 2" (35mm to 50mm) thick.



- D Make sure the hole in the door frame is drilled a minimum of 1" (25mm) deep, to leave enough space for the deadbolt to extend into the door frame when the door is locked



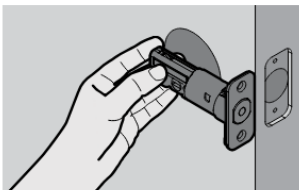
Notes: Make sure the door frame is aligned with the door and there are no obstructions stuck in the door frame.

Installation

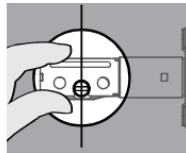
Install the latch and strike

A

Determine backset and adjust the latch.

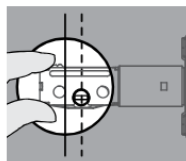


Hold the latch in front of the bore hole, with the latch face flush against the door edge. Is the slotted hole centered in the door hole?



YES

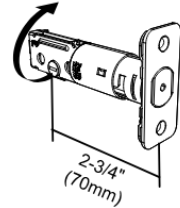
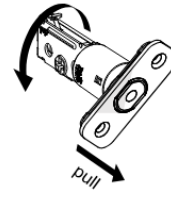
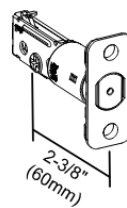
No adjustment is required. Proceed to next step.



NO

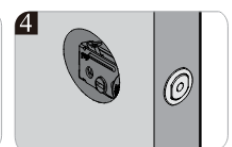
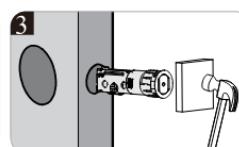
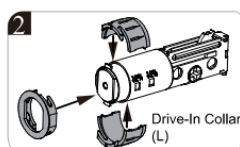
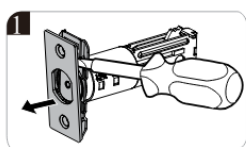
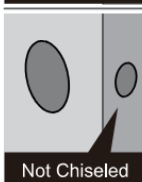
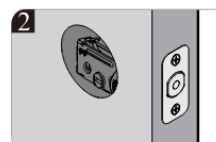
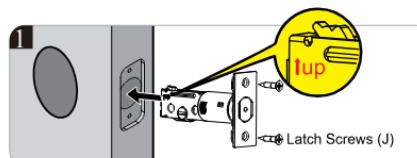
Slotted hole is NOT centered.

Rotate and pull the latch as shown to extend latch.

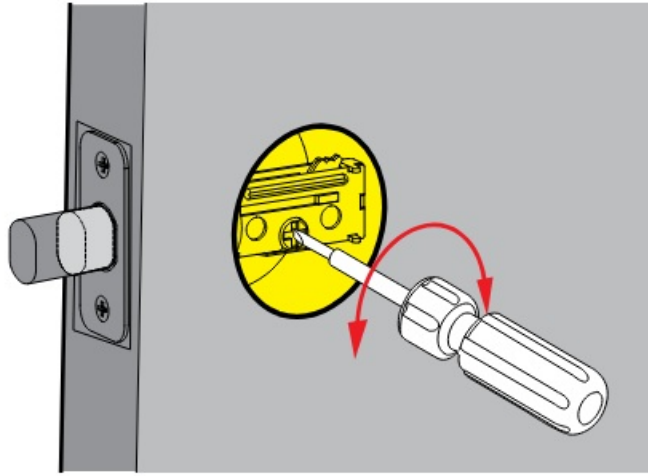


B

Install the latch.



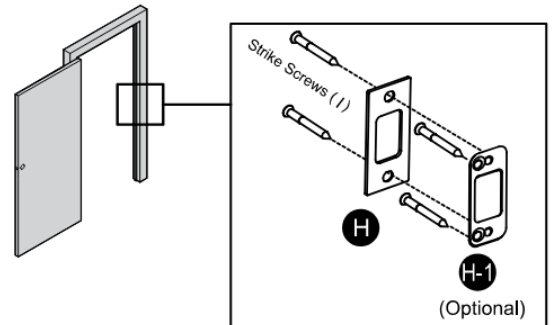
- C Use a screwdriver to test if deadbolt works smoothly



D Install strike on the door frame.

! IMPORTANT:

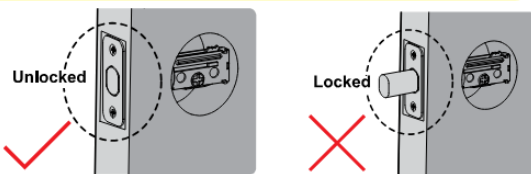
Make sure the hole in door frame is drilled a minimum of 1" (25mm) deep.



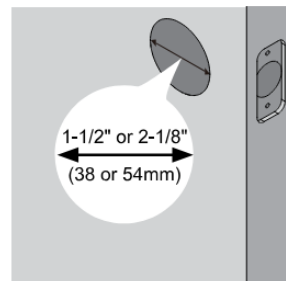
install exterior assembly

! IMPORTANT:

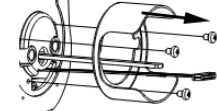
Before installation, make sure the latch is fully retracted (in the unlocked position).



A Measure the diameter of the hole in the door.



1-1/2" (38mm)

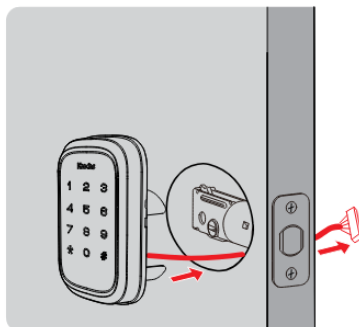


Remove the fire cup
Note: Remove the fire cup may impact fire rating

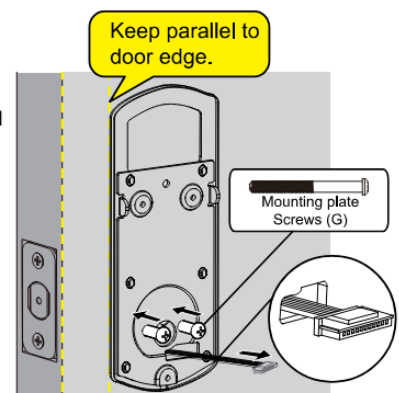
2-1/8" (54mm)

Proceed to next step

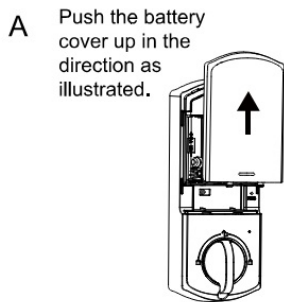
B With the latch bolt fully retracted (in the unlocked position), route the cable from the exterior keypad assembly below the latch.



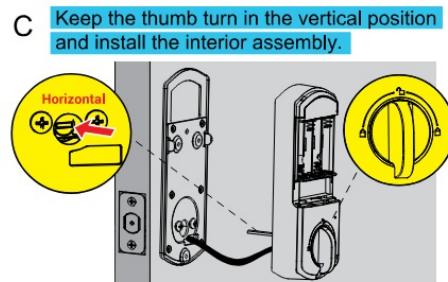
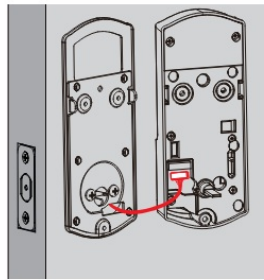
C Secure the mounting plate with the supplied screws. Do not overtighten screws.



install interior assembly

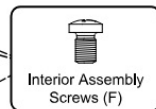
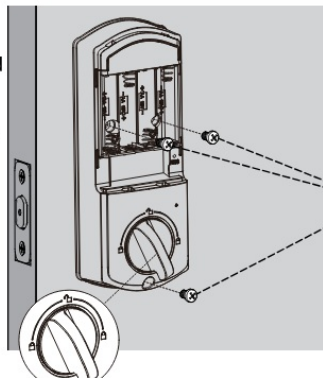


B Insert the cable into the connector. Push the connector in firmly until it is completely attached.



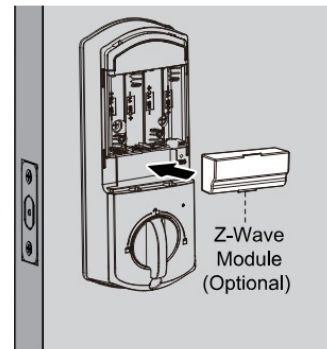
D Attach interior assembly to mounting plate and tighten 3 screws.

The thumbturn can be moved slightly to facilitate the installation of the third screw.



E Insert the Z-Wave module and make sure the network Module is securely plugged in.

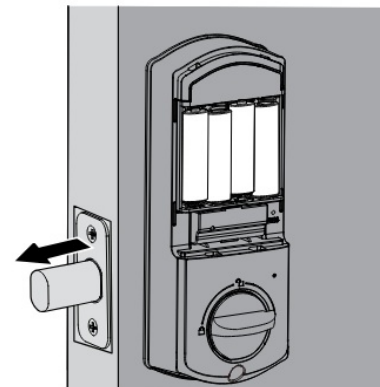
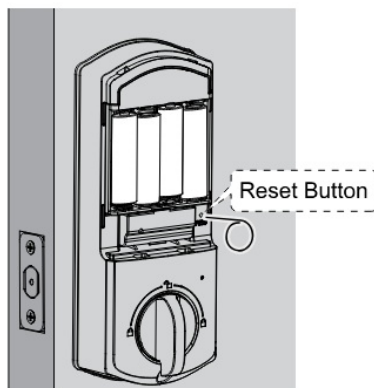
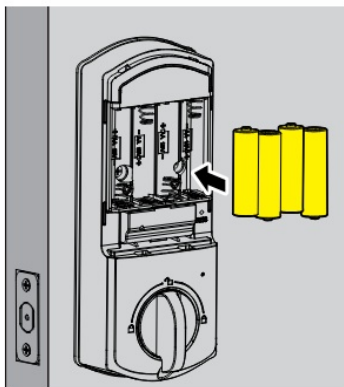
Note: Before inserting the module, make sure the lock does not have a battery installed.



insert batteries to calibrate the lock handing process.

IMPORTANT

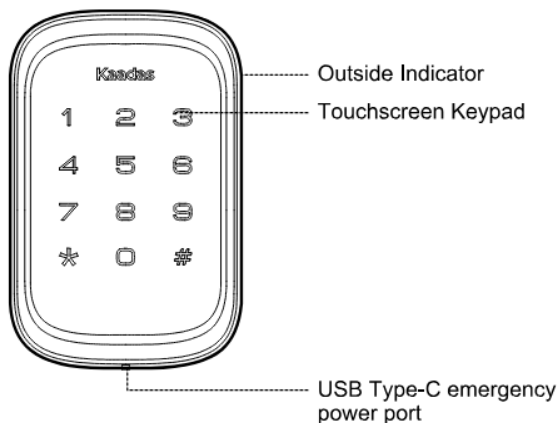
- A With the device unlocked, insert 4 AA alkaline batteries into the battery pack.
- B Use the Reset Tool to press and hold the Reset Button for more than 5 seconds until you hear a long “BEEP”.
- C If the reset is successful, the latch bolt will extend on its own to learn the handing orientation of the door.



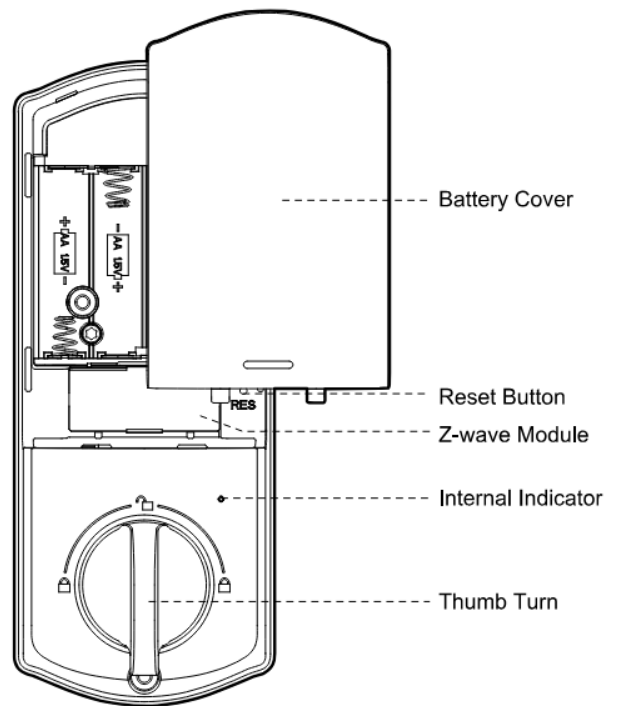
QUICK START GUIDE

At a Glance

Exterior Assembly

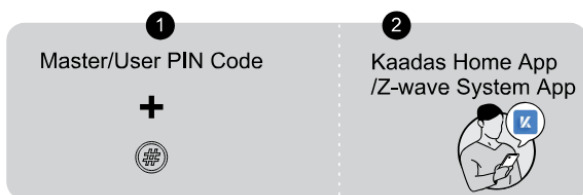


Interior Assembly

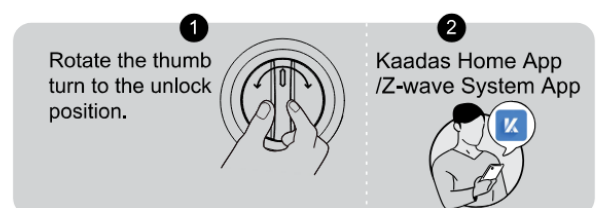


How to Lock/ Unlock

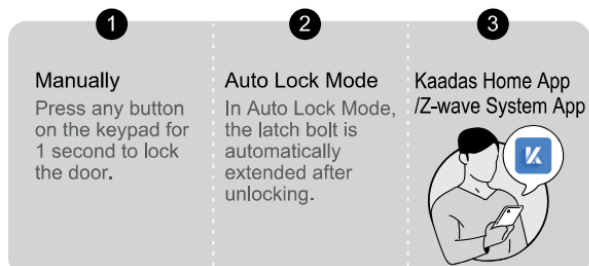
Unlocking the door from outside



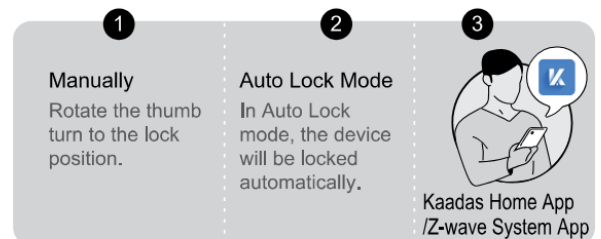
Unlocking the door from inside



Locking the door from outside



Locking the door from inside



Definitions

• Master PIN Code

- Required for programming and feature settings, the Master PIN Code can be used to unlock the door while in away mode. The default Master PIN Code needs to be changed before programming the lock for security reasons.

• Auto Lock

- If the Auto lock feature is enabled, the lock will lock the door 30 seconds after it has been unlocked. This feature is off by default. You can set the time delay for 30s, 60s, 120s and 180s in both Master

- **Mode and the Kaadas Home App.**

- Wrong Entry PIN Code Limit After 10 attempts of entering an invalid User PIN Code, the unit will shut down for 3 minutes.

- **Away Mode**

- This is a safety feature for you when you leave your house for vacation or a long trip. When you activate Away Mode, all User PIN Codes will be locked until the Master PIN Code is entered on the keypad. When the lock is unlocked by, an alarm will sound for 1 minute. By entering the Master PIN Code on the keypad, you can disable the alarm and Away Mode.

- **Silent Mode**

- The beep sounds when pressing keypad can be muted. But you will still hear low battery and system alerts.

- **One-Time User Code**

- This code can only be used once and is automatically deleted after used.

- **Low Battery Alarm**

- If the battery indicator keeps flashing, the batteries are getting low. For the best performance replace with four new AA alkaline batteries

Code Format

1. Master PIN Code (4 to 10 digits): The default Master PIN Code is 12345678. Change the default Master PIN Code before programming other codes.
2. User PIN Code (4 to 10 digits): A total of 250 User PIN Codes (including One-Time PIN Code) can be programmed and stored in the lock.
3. Both Master and User PIN Codes do not support the following combination of numbers.

A.	1	2	3	4	5	6	7	8	9
B.	9	8	7	6	5	4	3	2	1
C.	2	2	2	2	2	2	2	2	2
D. If	5	6	8	3	✓				
then	5	6	8	3	9	1	✗		
and	9	1	5	6	8	3	✗		

- X Forward number sequence
- X Backward number sequence
- X Repeat number sequence
- Contain existing code sequence

Z-Wave™ Module installation and user guide

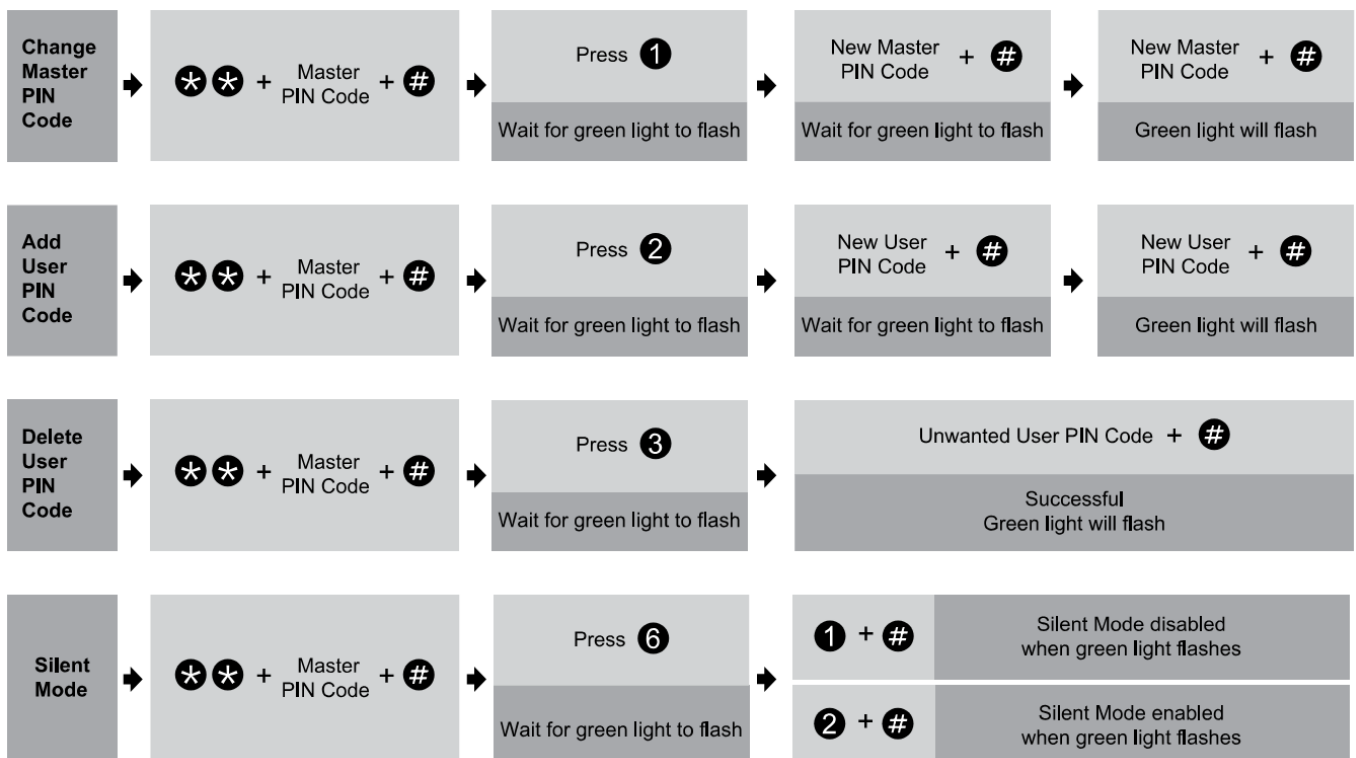
(Optional network module required)

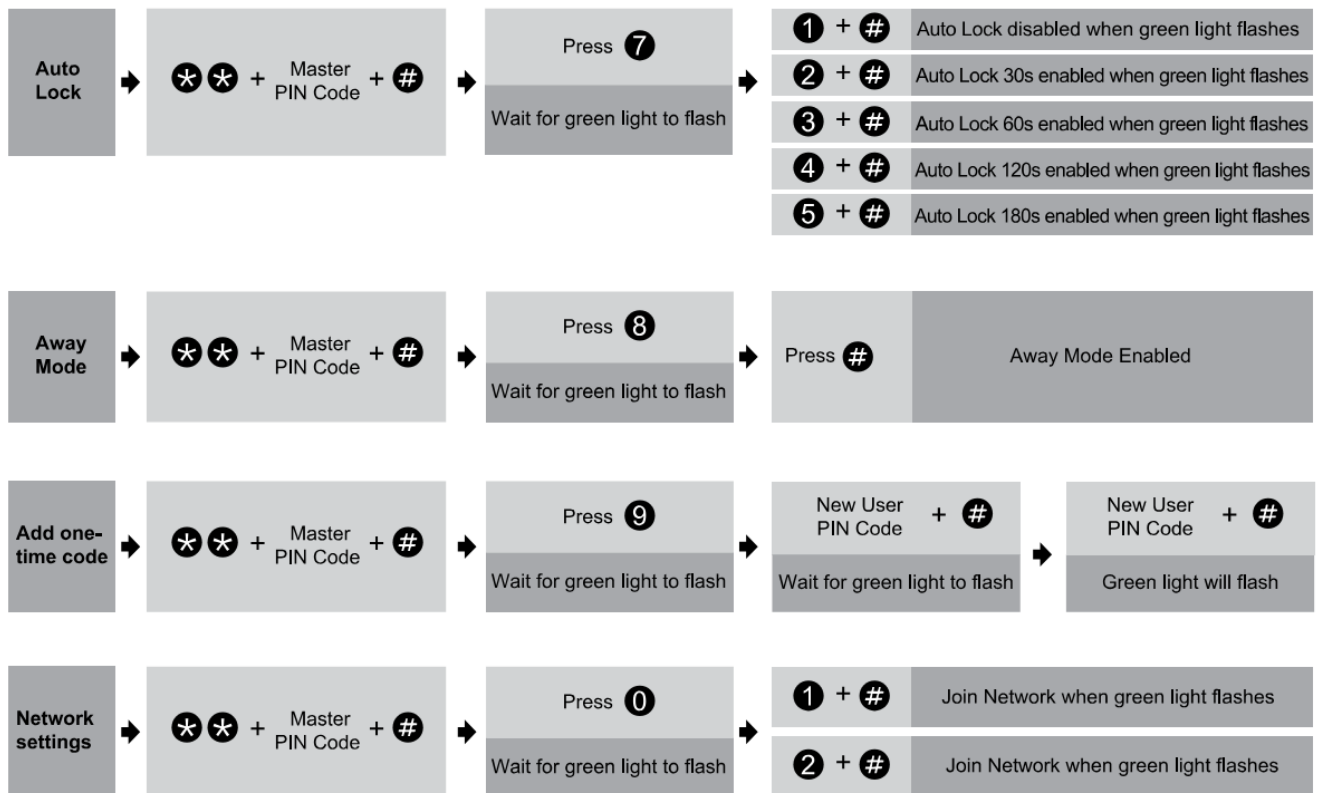
1. Make sure the network Module is securely plugged in, see page 7, step 4, section E for details.
2. Open the Z-Wave system's smart home or alarm app on your smartphone or tablet and follow the instructions in the app for adding a new smart lock.
3. Touch the lock keypad with your hand to activate the lock.
4. Enter the Master Mode by Pressing ** + master PIN code (the default master PIN code is 12345678) + #
5. Press the O key + # key to enter the Network settings.
6. Press the 1 key + # key to add the module (smart lock) to your Z-wave system; Press the 2 key + # key to remove the module (smart lock) from your Z-wave system.

Quick Set Up

IMPORTANT

The default Master Code is 1 5678 . It is required that you change it to a code of ! : your own before programming





Notes:

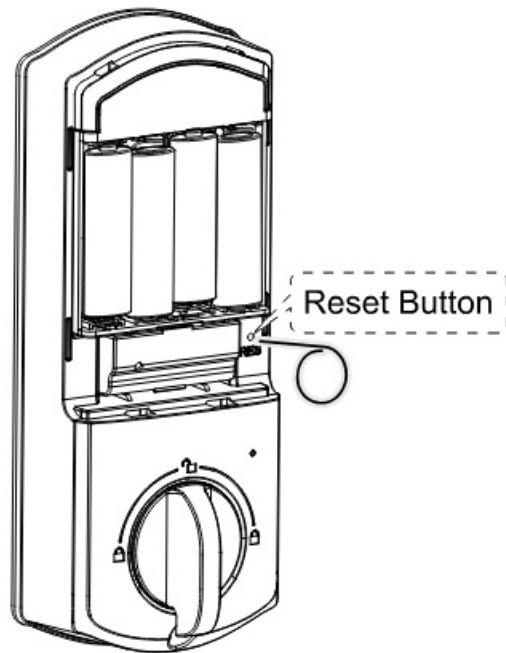
1. Beeps only sound when the Silent Mode is disabled.
2. If the indicator light flashes red, your setting failed and you will need to redo the operation.

Factory Default Settings

How to Reset?

Resetting the device will delete all User PIN Codes and Master PIN Code stored in the lock.

- Step 1. Keep the door open and the lock unlocked (thumb turn will be vertical).
- Step 2. Using the Reset Tool, press and hold the Reset Button for 5 seconds until you hear the "BEEP" and the latch rotates, turning the thumb turn to the vertical position automatically.



Settings	Factory Default
Master Code	12345678
Auto Lock	Disabled
Silent Mode	Disabled
Wrong Code Entry Limit	10 times
Shutdown Time	3 Minutes
Away Mode	Disabled

Download Kaadas Home App

Download the Kaadas Home App from the Apple Store or Google Play Store.



Quick Set Up Tips

- Create an account in the Kaadas Home App.
- Scan the QR Code found on the inside panel of the Battery Cover to add your KA21 O to the device list.

IMPORTANT:

- The Auto Lock is disabled by default, please complete the up process and enable Auto-Lock in the Kaadas HomeApp.
- The first account to add the lock to their account becomes the administrator of the lock by default. Only the administrator account can manage users of the lock.
- To reset the lock, press and hold the Reset Button for 5 seconds until you hear the "BEEP". Log in to the KaadasHome App with the administrator account. Go to Settings and unbind the lock.

Troubleshooting

Problem	Solution
The latch does not operate correctly after installation.	<ul style="list-style-type: none"> <input type="checkbox"/> Make sure the backset on the latch is set to the proper length. Refer to Installation Guide. <input type="checkbox"/> Make sure prior to installation the latch bolt is retracted. Refer to Installation Guide. <input type="checkbox"/> Please restore to factory default setting and enter the default Master PIN code to set up the lock. <p>Refer to User Guide.</p>
Lock does not smoothly lock or unlock while using the thumb turn.	<ul style="list-style-type: none"> <input type="checkbox"/> Confirm the proper mounting screws are installed.
Lock set up failed.	<ul style="list-style-type: none"> <input type="checkbox"/> Make sure the lock is installed correctly. <input type="checkbox"/> Insert fresh batteries and make sure that the cable is properly connected, not pinched. <input type="checkbox"/> After installation, reset the lock to the factory default settings.
Keypad not responding.	<ul style="list-style-type: none"> <input type="checkbox"/> Make sure batteries are inserted correctly. <input type="checkbox"/> If the battery indicator flashes continuously, the batteries are low. Replace them with four new AA alkaline batteries. <input type="checkbox"/> Make sure that the cable is properly connected and has not been damaged during installation.
The master PIN Code cannot be changed.	<ul style="list-style-type: none"> <input type="checkbox"/> Refer to the Quick Start Guide to reset the lock and reprogram all PIN Codes.
I forgot my Master PIN Code.	<ul style="list-style-type: none"> <input type="checkbox"/> Perform a factory reset to clear all PIN codes. Once the reset is complete, all PIN Codes will be deleted and the Master PIN Code will be reset to the default Master PIN Code of 12345678.
Auto Lock is not working.	<ul style="list-style-type: none"> <input type="checkbox"/> If the battery indicator blinks continuously, the batteries are weak. Replace them with four new batteries to get the best performance (alkaline batteries only). Refer to the Quick Set Up to activate the Auto Lock function.

FCC Statement

This equipment has been tested and found to comply with the limits for a Class B digital device, pursuant to part 15 of the FCC Rules. These limits are designed to provide reasonable protection against harmful interference in a residential installation. This equipment generates, uses and can radiate radio frequency energy and, if not installed and used in accordance with the instructions, may cause harmful interference to radio communications. However, there is no guarantee that interference will not occur in a particular installation. If this equipment does cause harmful interference to radio or television reception, which can be determined by turning the equipment off and on, the user is encouraged to try to correct the interference by one or more of the following measures:

- Reorient or relocate the receiving antenna.
- Increase the separation between the equipment and the receiver.

- Connect the equipment into an outlet on a circuit different from that to which the receiver is connected.
- Consult the dealer or an experienced radio/TV technician for help.

Caution: Any changes or modifications to this device not explicitly approved by the manufacturer could void your authority to operate this equipment. This device complies with part 15 of the FCC Rules. Operation is subject to the following two conditions: (1) This device may not cause harmful interference, and (2) this device must accept any interference received, including interference that may cause undesired operation.

RF Exposure Information

This equipment complies with FCC radiation exposure limits set forth for an uncontrolled environment. This equipment should be installed and operated with a minimum distance 20cm between the radiator and your body.

ISED Statement

This device contains licence-exempt transmitter(s)/receiver(s) that comply with Innovation, Science and Economic Development Canada's licence-exempt RSS(s). Operation is subject to the following two conditions:

1. This device may not cause interference.
2. This device must accept any interference, including interference that may cause undesired operation of the device.

The digital apparatus complies with Canadian CAN ICES-3 (B)/NMB-3(8).

Warnings

Failure to follow the below instructions could result in damage to the product and void the factory warranty. This manufacturer advises that no lock can provide complete security by itself. This lock may be defeated by forcible or technical means, or evaded by entry elsewhere on the property. No lock can substitute for caution, awareness of your environment, and common sense.

Product Care:

- This lockset is designed to provide the highest standard of product quality and performance. Care should be taken to ensure a long-lasting finish. When cleaning is required, use a soft, damp cloth. Using lacquer thinner, caustic soaps, abrasive cleaners or polishes could damage the coating and result in tarnishing.
- Avoid exposure to direct sunlight. Long-term exposure to direct sunlight may damage the lock. Do not install batteries until the lock is completely installed on door.
- User PIN Codes: Can be 4-10 digits and can be set up in the Kaadas Home App.
- Auto handing calibration: To calibrate your lock, follow the instructions in the Kaaddas Home App step by step.
- Sharing Access: Sharing access to your lock means that you are allowing other users to control and track usage of the device. Please be aware of the potential risks it may cause

Kaadas
KA210
Smart Key-Free
Touchscreen Lock



[Kaadas KA210 Smart Key-Free Touchscreen Lock](#) [pdf] Installation Guide
KA210 Smart Key-Free Touchscreen Lock, KA210, Smart Key-Free Touchscreen Lock,
Touchscreen Lock, Lock

References

- [User Manual](#)

Manuals+, Privacy Policy

This website is an independent publication and is neither affiliated with nor endorsed by any of the trademark owners. The "Bluetooth®" word mark and logos are registered trademarks owned by Bluetooth SIG, Inc. The "Wi-Fi®" word mark and logos are registered trademarks owned by the Wi-Fi Alliance. Any use of these marks on this website does not imply any affiliation with or endorsement.