



Kaadas DDL203 Gateway and Smart Plug Socket Instructions

[Home](#) » [Kaadas](#) » Kaadas DDL203 Gateway and Smart Plug Socket Instructions 

Contents

- [1 Kaadas DDL203 Gateway and Smart Plug Socket](#)
- [2 Product schematic](#)
- [3 Download KK Home App](#)
- [4 Technical parameters](#)
- [5 Troubleshooting](#)
- [6 FCC Statement](#)
 - [6.1 ISED Statement](#)
- [7 Documents / Resources](#)

Kaadas 

Kaadas DDL203 Gateway and Smart Plug Socket



Product schematic

operation	status
Power on the device	The device indicator changes from off to always on.
Press and hold the RES button for 5 seconds	The device restores factory settings and enters the Internet connection state.
The device is connecting to the internet	The device indicator is flashing.
Click the button to switch the device status	The status indicator is off when the device is turned off; the status indicator is always on when the device is open.

Download KK Home App

Scan the QR code to download the KK Home App from the App Store or Google Play.



IMPORTANT:

Please add the G1 gateway in the KK Home App, and then add the smart lock.

Step 1: Create an account for the App.

1. If you are a regular user: This is a device, and you can integrate it into your KK Home App for easy control.
2. If you are a new user: Please click the "Sign Up" button to create your account.

Email Address

Email Address

Password

Password

[Forgot Password ?](#) [Sign Up](#)

Log In

- Fill in your email ID
- Enter the verification code received in your email inbox
- Set up an account password
- Create an account successfully

Sign Up

184661265@gmail.com

1856 12%

Password

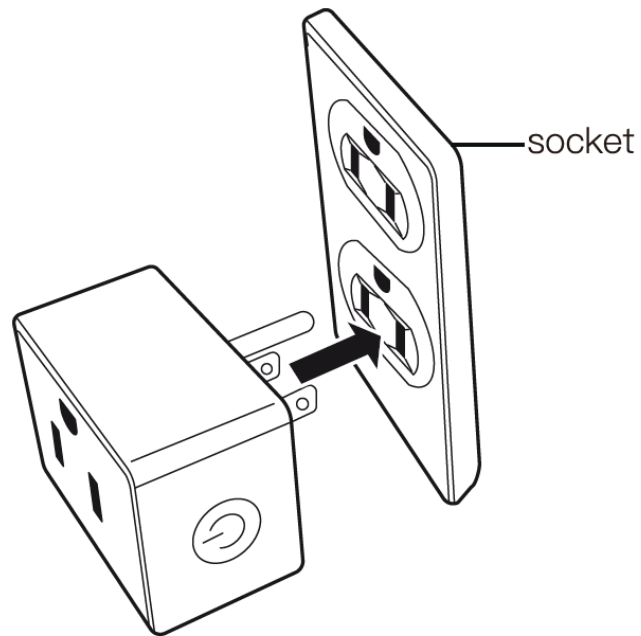
The password must be 6-15 characters and must include uppercase letters, lowercase letters and numbers.

Create

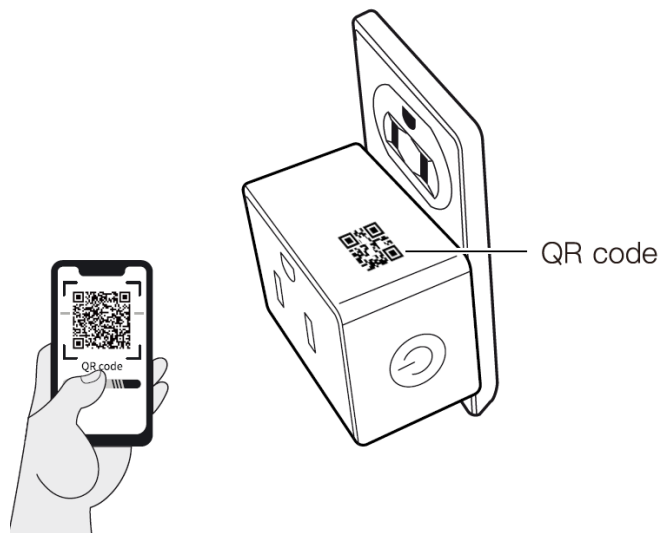
☐ I agree to Service Agreement and Privacy Policy by registering.

Step2: Add the G1

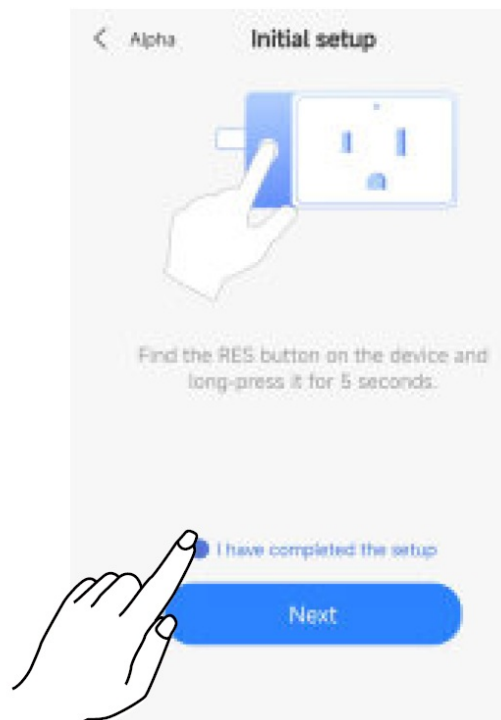
1. Power on the device.



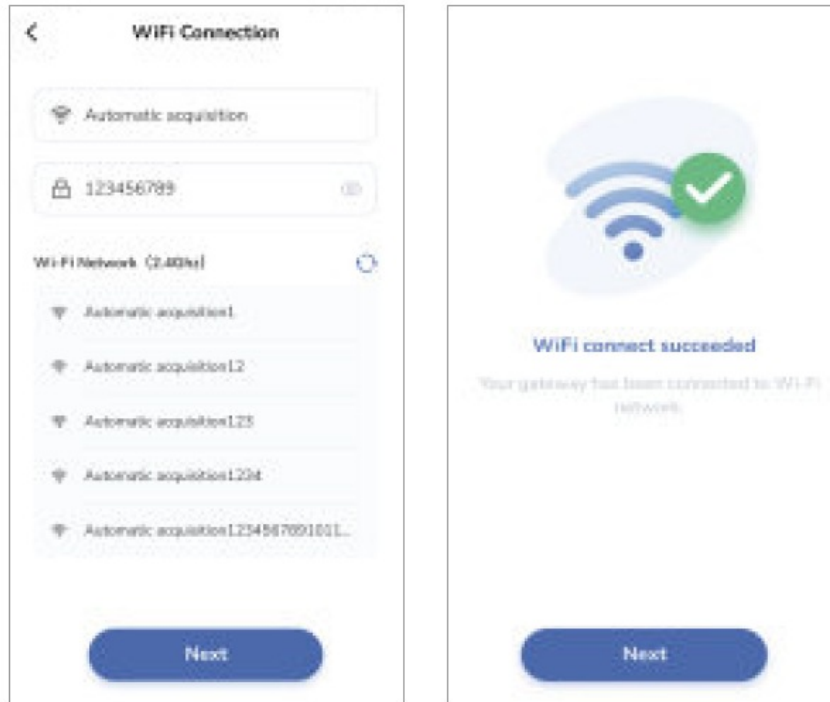
2. Open the App and scan the QR code on the device.



3. Find the RES button on the device, press and hold it for 5 seconds.



4. Set up Wi-Fi connection, it only works with 2.4G Wi-Fi network.



Step 3: Add the smart lock in the App.

Please refer to the App guide for the smart lock.

Note: Before adding a smart lock in the App, please make sure the G1 gateway has been added successfully.

Technical parameters

- Maximum current: 10A
- Rated voltage: 100-240V
- Rated power: 2200W
- Input voltage: 100-240V

Troubleshooting

What should I do if the gateway fails to be added?

1. Ensure that your router works properly. The router should be connected to the internet. Troubleshoot the issue of the router by changing the Wi-Fi network or using your phone's hot spot.
2. Turn off Advanced Wi-Fi settings for the router, like Band Steering (which also named "Smart Connect" or "Whole-Home Wi-Fi"), Wi-Fi Optimizing or Channel optimization and so on.

Note: The G1 gateway only supports 2.4G Wi-Fi, rather than 5G Wi-Fi.

3. View the Wi-Fi signal by using Wi-Fi ANALYZER App.

- **Strong:** more than -50 dBm
- **Good to Average:** among -70 dBm to -50 dBm
- **Poor:** less than -70 dBm
- **Note:** If RSSI is less than -70dBm, the signal is too weak. the device will keep disconnecting and

relocating the smart device or router to get a stronger Wi-Fi signal. Please make sure that the gateway is placed within | meters).

4. Try changing DNS settings of the router.
 - Primary DNS: 8.8.8.8
 - Secondary DNS: 8.8.4.4

The gateway has been added successfully, but it can't be controlled remotely. What should I do?

1. Please review if you have added the G1 gateway before adding the smart lock.
2. Please make sure the distance between the gateway and the smart lock is within 32 feet (10 meters).

How many locks are supported by one gateway? One gateway can work with 3 smart locks.

FCC Statement

This equipment has been tested and found to comply with the limits for a Class B digital device, pursuant to part 15 of the FCC Rules. These limits are designed to provide reasonable protection against harmful interference in a residential installation. This equipment generates, uses and can radiate radio frequency energy and, if not installed and used in accordance with the instructions, may cause harmful interference to radio communications. However, there is no guarantee that interference will not occur in a particular installation.

If this equipment does cause harmful interference to radio or television reception, which can be determined by turning the equipment off and on, the user is encouraged to try to correct the interference by one or more of the following measures:

- Reorient or relocate the receiving antenna.
- Increase the separation between the equipment and receiver.
- Connect the equipment into an outlet on a circuit different from that to which the receiver is connected.
- Consult the dealer or an experienced radio/TV technician for help.

Caution: Any changes or modifications to this device not explicitly approved by manufacturer could void your authority to operate this equipment. This device complies with part 15 of the FCC Rules.

Operation is subject to the following two conditions:

1. This device may not cause harmful interference, and
2. this device must accept any interference received, including interference that may cause undesired operation.

F Exposure Information

This equipment complies with FCC radiation exposure limits set forth for an uncontrolled environment. This equipment should be installed and operated with a minimum distance 20cm between the radiator and your body.

ISED Statement

English: This device contains licence-exempt transmitters/receivers that comply with Innovation, Science and Economic Development Canada's license-exempt RSS(s).

Operation is subject to the following two conditions:

1. This device may not cause interference.
2. This device must accept any interference, including interference that may cause undesired operation of the device.

The digital apparatus complies with Canadian CAN ICES-3 (B)/NMB-3(B). compliance with RSS 102 RF exposure, users can obtain Canadian information on RF exposure and compliance. This equipment complies with Canada's radiation exposure limits set forth for an uncontrolled environment. This equipment should be installed and operated with a minimum distance 20cm between the radiator & your body.



Documents / Resources

	<p>Kaadas DDL203 Gateway and Smart Plug Socket [pdf] Instructions 2AQY4-HUB1, 2AQY4HUB1, HUB1, G1, DDL203, DDL203 Gateway and Smart Plug Socket, G ateway and Smart Plug Socket, Smart Plug Socket, Plug Socket, Socket</p>
---	---