



K2 Systems PVX Minimount Installation Guide

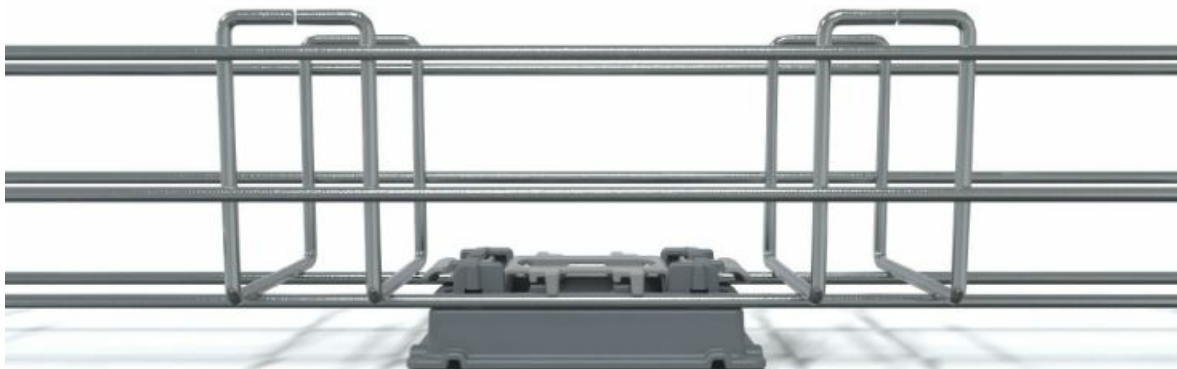
[Home](#) » [K2 Systems](#) » K2 Systems PVX Minimount Installation Guide 

Contents

- [1 K2 Systems PVX Minimount](#)
- [2 Product Information](#)
- [3 Tools overview](#)
- [4 Assembly on K2 mounting rails](#)
- [5 Assembly directly on trapezoidal sheet](#)
- [6 Documents / Resources](#)
 - [6.1 References](#)



K2 Systems PVX Minimount



Product Information

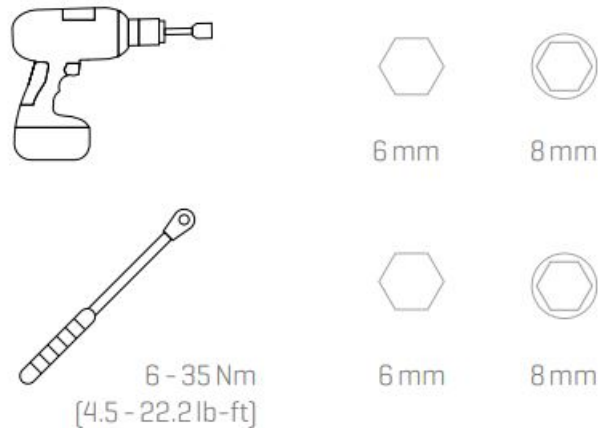
K2 Systems offers a range of mounting solutions for PV systems. One of our popular products is the PVX Minimount, which can be used for both rails and trapezoidal sheet installations. Our products are known for their secure connections, highest quality, and precision. We have been tested, confirmed, and certified by independent institutes. For more information about our quality and product certificates, please visit [k2-](#)

Quality tested – several certifications

K2 Systems stands for secure connections, highest quality and precision. Our customers and business partners have known that for a long time. Independent institutes have tested, confirmed and certified our capabilities and components.

Please find our quality and product certificates under: k2-systems.com/en/technical-information

Tools overview



Digital Toolbox



Do you already know our digital services? Use our K2 DocuApp now and record the first important data directly at the customer or project site. Simply import the data into our online planning software K2 Base. Here you can plan your project easily, safely and quickly. You receive a detailed project report with assembly plan and static report. The K2+ interface enables seamless project data transfer to the planning tools of other manufacturers. With the K2 DocuApp, project documentation is done quickly and easily – without annoying paperwork.

Get started now and register:

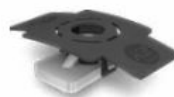
- base.k2-systems.com
- docuapp.k2-systems.com

Assembly on K2 mounting rails

Components



2003387
PVX Minimount Rail
suitable for SingleRail, SolidRail
and SpeedRail [Dome 6]



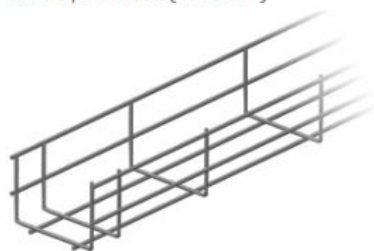
1001643
MK2 slot nut



1000121
Washer



2001729
**Bolt with serrated
under head M8x20**

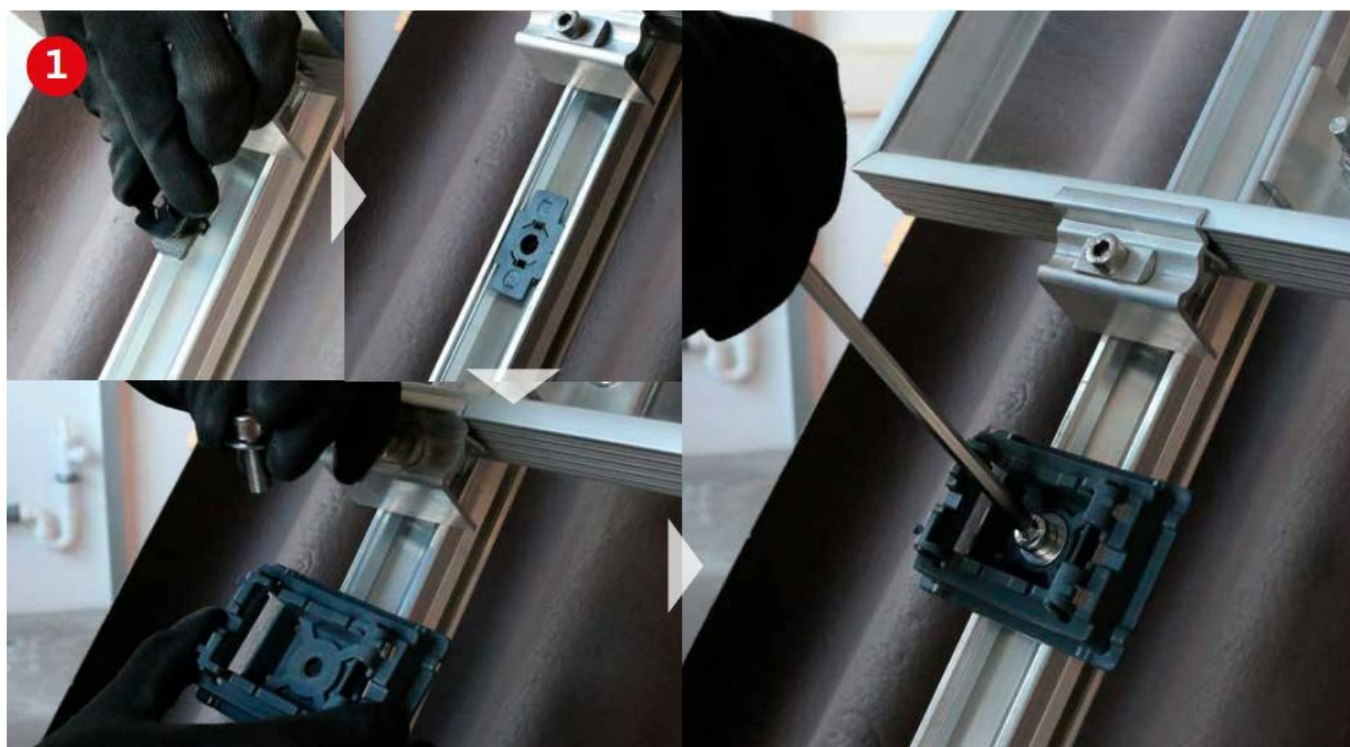


2004054
Performa Mesh Tray
70 x 100 x 3000 mm



2004055
**Performa Mesh Tray
Connector**

Assembly





Assembly directly on trapezoidal sheet

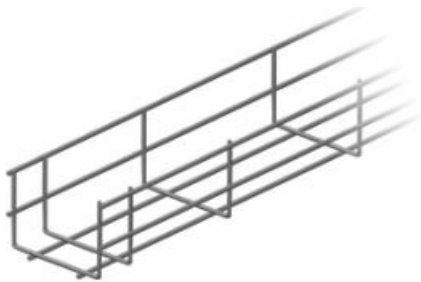
Components



2003386
PVX Minimount Trapezoidal
incl. bottom sealing



1005193
Thread-forming tapping screw
incl. sealing washer

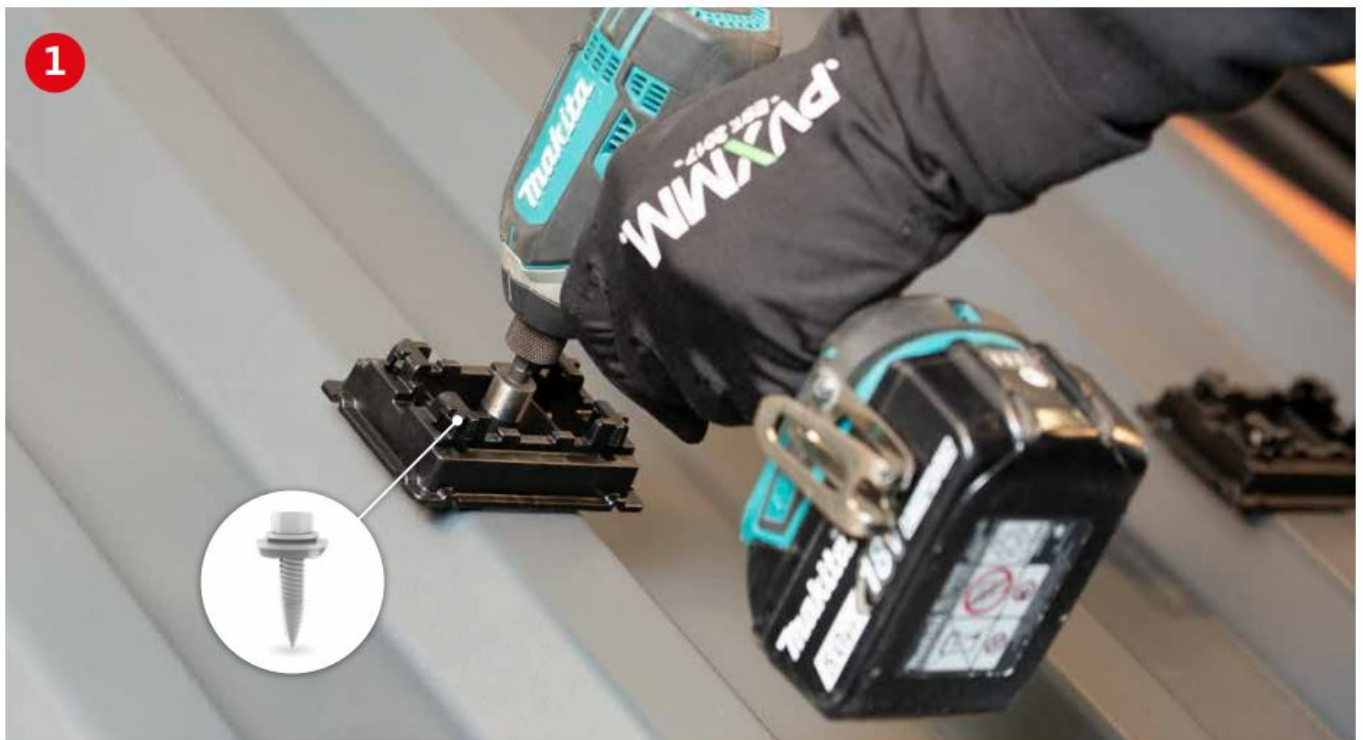


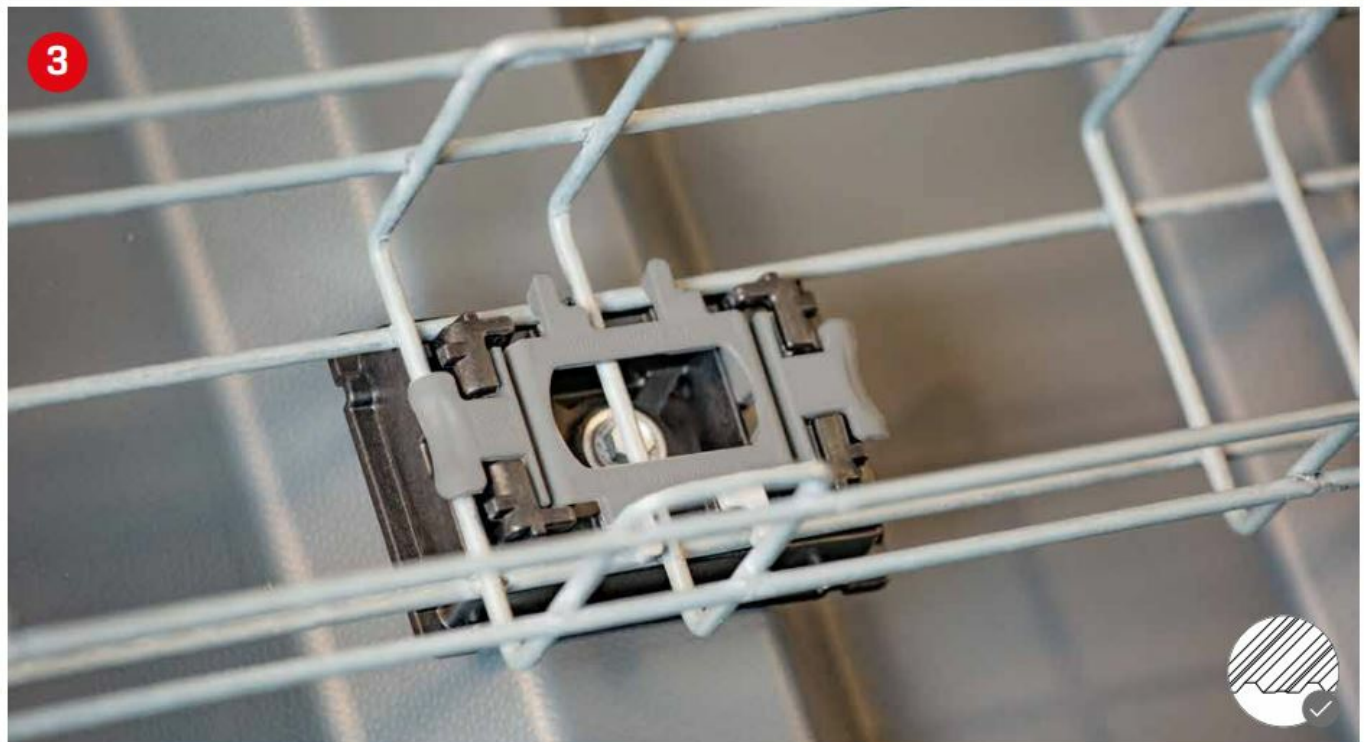
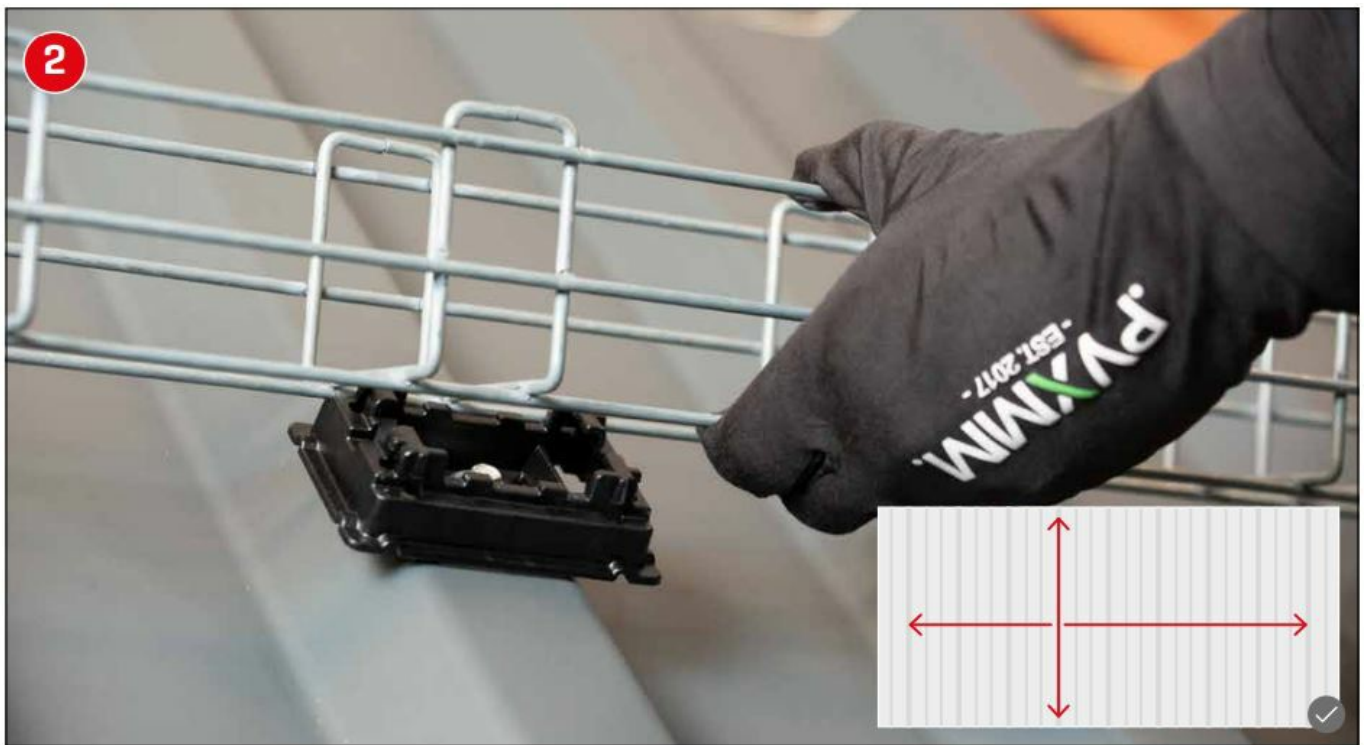
2004054
Performa Mesh Tray
70 × 100 × 3000 mm



2004055
Performa Mesh Tray
Connector

Assembly





Thank you for choosing a K2 mounting system.

Systems from K2 Systems are quick and easy to install. We hope these instructions have helped. Please contact us with any questions or suggestions for improvement.

Our contact data:

k2-systems.com/en/contact

Service Hotline: +49 (0)7159 42059-0

German law shall apply excluding the UN Convention on CISG. Place of venue is Stuttgart.

Our General Terms of Business apply. Please refer: k2-systems.com

K2 Systems GmbH

Industriestraße 18


71272 Renningen

Germany

+49 (0) 7159 – 42059 – 0

info@k2-systems.com

Documents / Resources

	<p>K2 Systems PVX Minimount [pdf] Installation Guide PVX Minimount, PVX, Minimount</p>
---	--

References

- [K2 Base](#)
- [K2 Docu](#)
- [Download Library - K2 Systems](#)