



## Contents [ [hide](#) ]

- 1 [jwlab](#)s A4.1 Rife Machine Instruction Manual
- 2 WARNINGS
- 3 CAUTIONS
- 4 MAINTENANCE
- 5 The Basics of JWLABS Rife Technology
- 6 WHAT IS TACTIO®?
- 7 OPERATING INSTRUCTIONS
- 8 OPEN INSTRUCTIONS
- 9 TAKE AN INVENTORY
- 10 OUTSIDE FEATURES
- 11 MODEL A FREQUENCY SESSIONS
- 12 TROUBLESHOOTING
- 13 Documents / Resources
  - 13.1 References

# **jwlab**s A4.1 Rife Machine Instruction Manual



### **MODEL A4.1**

Watch our video on How To Use Your JWLABS A4.1 Rife Machine.



### **Disclaimer**

JWLABS Machines are media adapters that act as transducers, converting audio frequencies such as the sound of music to electrical impulses which the user feels as gentle vibrations or a tingling sensation. The JWLABS Machines are not designed to nor do we intend that they will exercise any structure-function effect on the user.

These are not FDA certified medical devices and we offer them only for general well being and entertainment purposes.

## **Warranty**

Customer understands and agrees that in the event of a failure of the device, JWLABS reserves the right to repair or replace the device with another. JWLABS may replace the device with any instrument of their choosing of greater or lesser value than the original, until such time as the defective device can be permanently replaced or repaired. In no case will repaired or replacement devices be shipped to the Customer until any loaned device in the Customer's possession is returned in good condition. JWLABS reserves the right to assess damage to any device it has

made for Customer, to determine if the device has been damaged due to negligence on the part of the Customer. JWLABS assessment of damage will be final, and if the Customer is found negligent, JWLABS reserves the right to collect money for the repair or replacement from the Customer, prior to the replacement or repaired device being shipped to the Customer.

Warranty extends only to the innards of the Model A. It does not include wires or other accessories.

It does not include the re-chargeable battery which is located on board. The battery can be replaced for cost at our factory.

PLEASE NOTE: Do NOT attempt to open the top or bottom of the device. Any indication that this has been attempted will void the warranty in its entirety.

Wright Laboratories, LLC

205 E. Butterfield Road, Suite 227, Elmhurst, IL 60126

888.891.1122 • 708.356.6513 • [info@jwllabs.com](mailto:info@jwllabs.com)

©2023 Wright Laboratories, LLC

## **WELCOME TO THE GLOBAL COMMUNITY OF JWLABS MODEL A USERS!**

You have made a sound decision! You have acquired a device that is the instrument of choice for people who understand the value of applying microcurrent to the body. Our instruments transform audio frequencies to electrical output which produces a tingling sensation at the place of contact. This electrical stimulation can be acquired from our specially tuned sessions or from your favorite music. Explore the sensations of our Tactio® feature which makes music a whole body experience!

JWLABS Machines are media adapters that act as transducers, which convert audio frequencies, including music, to electrical impulses the user feels as gentle vibrations or a tingling sensation.

Our instruments are not FDA certified medical devices. We offer them only for general well being and entertainment purposes.

Once you experience our Rife technology you will appreciate why our customers use our machines routinely to improve, preserve and protect their well being.

Frequency matters... Change Your Tune!

Watch our video on How To Use Your JWLABS A4.1 Rife Machine.

## **WARNINGS**

Check with your physician before beginning use of the device.

DO NOT use this device if you have a pacemaker and/or defibrillator or other sensor, monitor or electronic device.

DO NOT use the device on children under 18 years old and do NOT allow children to use the device without adult supervision.

DO NOT use the device near water.

DO NOT plug electrode wires into an electrical outlet.

DO NOT place electrodes in places on the body other than the palms of the hands and/or soles of the feet because it may cause skin irritation, injury or burns.

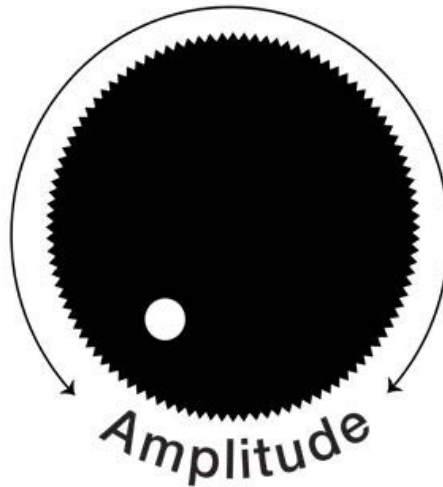
DO NOT apply electrodes over the heart or above the neck because it could cause serious injury.

DO NOT engage in any use of the device which is not expressly stated in our material. If the user engages in using the device for anything other than entertainment, the user accepts full responsibility for the consequences such as serious physical injury.

If the user feels any sensation of pain, burning, skin irritation, or shock stop using the device immediately and turn it off. Seek medical advice if necessary.

# CAUTIONS

Read all instructions carefully before beginning use.



Turn the amplitude dial all the way down (counter clockwise) at the end of each session, ensuring that you begin each track with the amplitude minimized. In this position, you can make adjustments to your connections, to your track selection, or turn your device on or off.

We recommend limiting the use of the device to an hour.

60 minutes is the recommended maximum duration of a session. Usage beyond 60 minutes per session could result in temporary feelings of fatigue or headache. We encourage you to drink plenty of water before, during and/or after your sessions. If headache or fatigue persists for more than two hours, you may want to consult your physician.

Check the device before each use to make sure all components are intact and that no wires are frayed. Do NOT use device if wires are frayed or damaged. Doing so may result in a shock, or no output at all.

When using the machine with two people at a time, ensure that the person who feels the current first is in charge of the amplitude setting.

# MAINTENANCE

Clean your device with a soft cloth. Do NOT apply cleaning agents to the instrument.

Store your device with the case closed to protect the inner components.

Check your electrode pins for carbon build up before each use. The carbon build up could interfere with the conductivity and could cause no output or intermittent output, which the user may experience as a shocking sensation. A fine emery board or sandpaper will prevent residue accumulation on the electrode pins.

DO NOT let the battery drain below 50% or the device may not work properly. For best results, recharge the battery when the indicator light shows 50% discharge.

## GENERAL BACKGROUND

JWLABS has been producing products since 1987 which are based on the long history of Rife technology. Originally built by hand in our workshop, our devices have long been assembled in state-of-the-art factories in the US. We have stayed true to our commitment to the original analog signal (Audiophiles appreciate the significance of this, in that the output is more natural, full bodied than those created digitally. This means that with each frequency we deliver, the harmonics around that number are produced.) Our instruments are designed to provide the ability to play frequencies from an outside source, including music. This feature delivers a thrilling experience of tactile music, and provides entertainment value which is unique to our devices.

We call this feature Tactio. You may also play specifically tuned frequencies from an outside source through your Model A.



# The Basics of JWLABS Rife Technology

Our basic strategy has always been to provide expert frequency tuning throughout the lower end of the audio range. Though many have referenced targeted frequencies for specific health conditions, we do not make or imply such claims. Each of JWLABS frequency sessions provides concentration on certain key numbers, accompanied by sophisticated tuning techniques such as sweeping (both upward and downward) and dithering. These techniques, coupled with the original analog source of our sessions, provide a carefully composed and expertly tuned experience of electro-stimulation.

Our devices are intended to appeal to people who are not interested in learning the intricate details of Rife technology, but prefer a research based user-friendly format which is designed to enhance their General Wellness.

Our recorded sessions are a form of music. They are hand-tuned and played with skill, much like any musical instrument is played while music is recorded. The needs and preferences of the user are anticipated in the contents of each recording, or score. Satisfaction of the experience can be realized with little or no education required.

We've prepared numerous sessions for you to explore, and you may also relish the Tactio® experience which involves playing your favorite music through your machine rather than utilizing our specialized sessions. This allows you to feel the frequencies of your music — a unique and multidimensional experience. You are in for a treat!

All of our sessions are created on JWLABS Model B27, our analog instrument, and are recorded by channels A, B, C and D. The energy our machines use is a volts/amps electrical current, balanced in a way that feels good to the user. With our specialized tuning, you will have the confidence and freedom to explore numerous variations in your sessions, including emphasis on certain frequencies (and ranges of frequencies).

Some people prefer to feel the energy on their palms, others choose to apply the electrodes to the soles of their feet. Each approach will produce a variation in sensation.

With the exception of the General Alignment recording, the frequency range for each channel used from the Model B always corresponds to the four tracks of each session title as follows:

- A = Track 1, delivering 3 to 33 Hz
- B = Track 2, delivering 33 to 333 Hz
- C = Track 3, delivering 333 to 3333 Hz
- D = Track 4, delivering 3300 to 10k Hz



Each title is masterfully tuned throughout these ranges with specific sets of exact traditional frequencies, which have been known to be helpful for thousands of users. Our tuning is both general and specific in emphasis, ensuring that you have a comprehensive session.

## WHAT IS TACTIO®?

John Wright conceived Tactio® very early in his career of developing Rife machines. He understood that the safest range of frequencies is in the audio range, and he designed his early instruments with an audio jack, making it possible to record the hand tuned frequency sessions in real time. He knew that the potential for tactile music was promising.

Do you love music? This will take your enjoyment to a whole new level. The thrill of listening to your favorite music and feeling the electron flow that these selections produce is second to none. Our devices have gone through many renditions, and we're proud to offer this safe and exhilarating experience to our customers.

**What you will need:**



- Input cable (provided in your startup kit.)
- Headset (wired) with a volume control
- Music source with a headphone jack (CD player, computer, tablet, iPhone or smartphone)
- Model A4

Simply plug your input cable into the device you're using to play your music. Attach your headset to the Tactio® jack and set up your electrodes for a regular Rife session. Be prepared to adjust the amplitude as the music intensifies or becomes more subdued. The display on your Model A4 will say "Tactio® mode" when you are streaming music or any other audio signal through your machine.

Tactio® will bring you hours of entertainment and will provide an entirely new way for you to introduce your friends and family to Rife technology.

It's fun, it's energizing. Put a new level of vibrancy in your life!

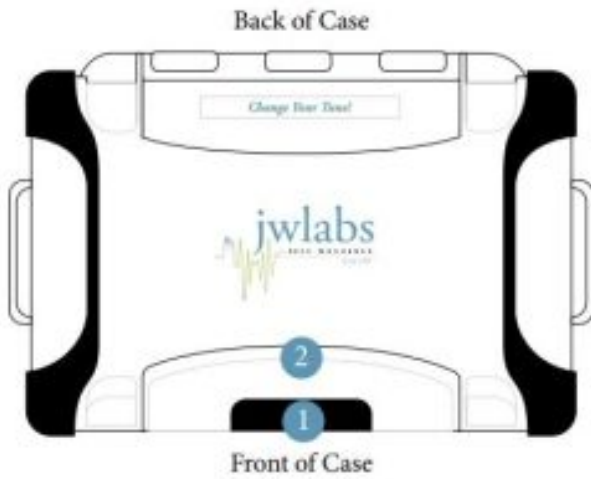




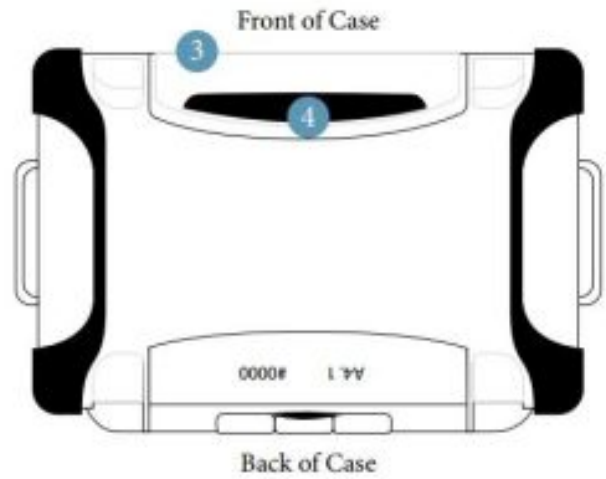
# OPERATING INSTRUCTIONS

YOUR NEW A4.1

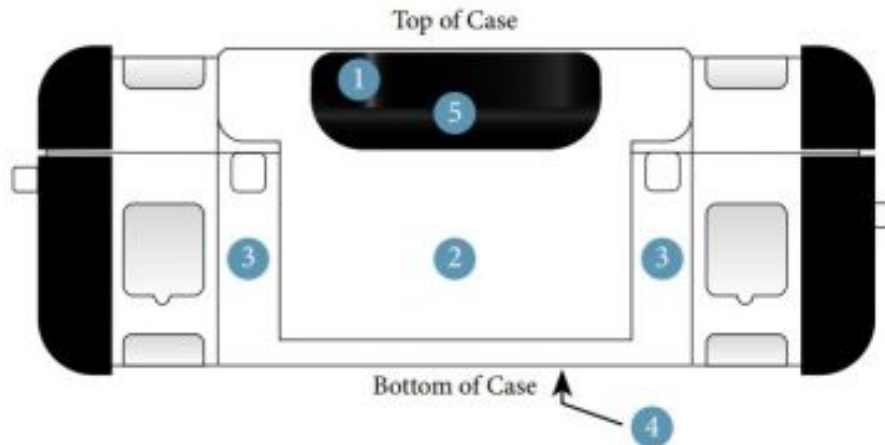
### TOP VIEW



### BOTTOM VIEW



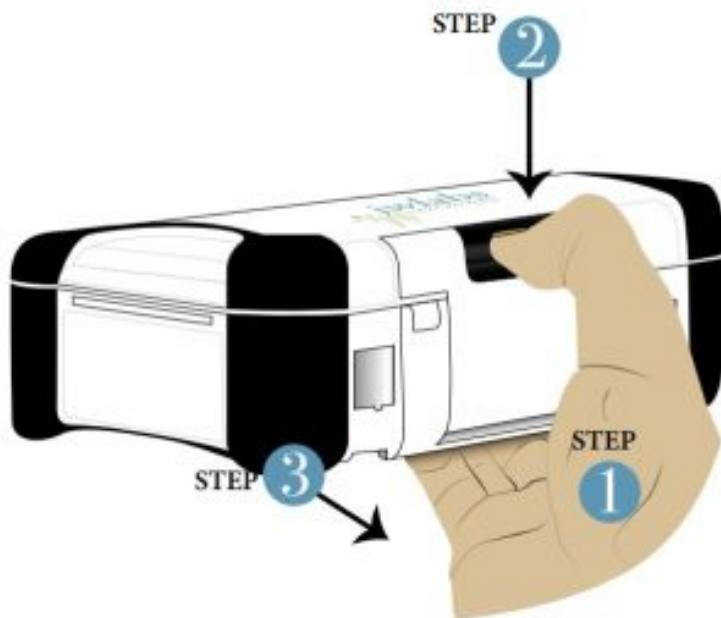
### FRONT VIEW



### LEGEND

1. Button
2. Grip
3. Latch
4. Plastic Grip
5. Button Lip

## OPEN INSTRUCTIONS



**Step 1:**

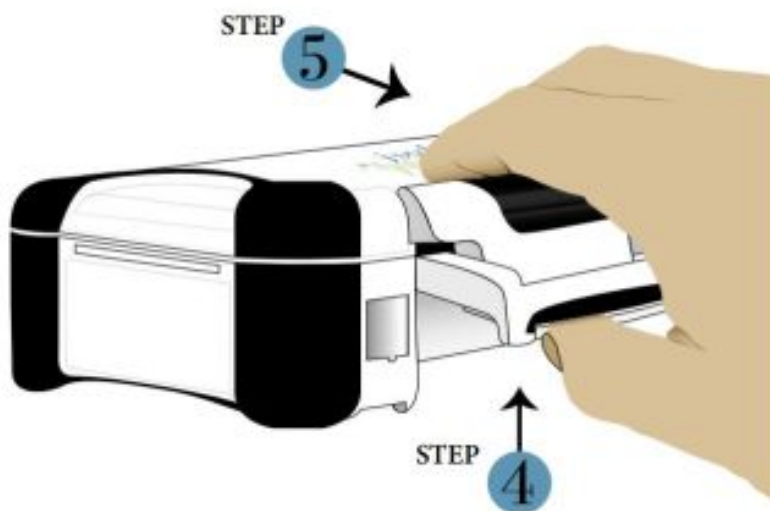
Place your thumb on the lip of the black button and wrap your fingers around the latch on the bottom of the unit so that your fingers are on the edge of the black plastic grip.

**Step 2:**

Press down on the lip of the button with your thumb.

**Step 3:**

With the button depressed, pull the latch forward with your fingers until it releases. This may take a little force.

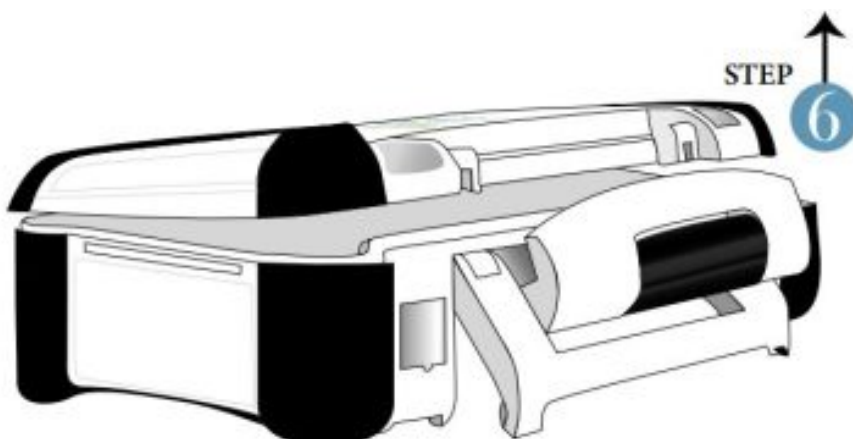


**Step 4:**

Lift the latch up slightly to loosen the grip at the top of the unit.

**Step 5:**

Pull the grip forward (away from the unit) and release.



**Step 6:**

Lift the top of the unit to open.

**TAKE AN INVENTORY**

First, take a moment to inventory what you have received. Compare the contents with the packing slip to verify that your shipment is complete. If anything is missing or appears damaged, contact us immediately. Save all packing materials.

## **YOUR MODEL A4.1**

Your Model A4.1 Start Up Kit Consists of the Following:

1. Two sets of Electrode Wires:  
(1) 6-ft set and (1) 10-ft set
2. USB Cable and Charging Cube
3. Input Cable
4. (4) White Adhesive Electrode Patches (“Softies”)
5. Instruction Manual



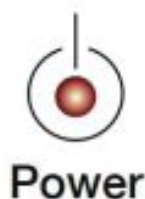
## **OUTSIDE FEATURES**

Your Model A4.1 is approximately 6.3” long x 4.7” wide x 2.2” high and weighs around one pound. The Model A4.1 is built into an extremely durable, crush-proof, water-



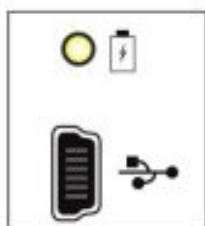
resistant enclosure. When closed, your Model A4.1 is very secure.

## GETTING TO KNOW YOUR MODEL A4.1



### **Power Switch**

This dome switch (the raised button located in the upper left corner) is illustrated with the universal symbol for power. A red LED illuminates the center of the button. When the power is first turned on, the green ACTIVITY light will illuminate briefly. It will remain darkened until your frequencies are playing.



### **Charging the Battery**

Make sure the power switch is turned OFF while charging the battery. You may charge the battery via the USB cable with the adapter provided or plugged into your computer.

**Please Note:** charging will be completed much faster when using the power supply in the wall. A yellow LED will indicate that the battery is charging. When charging is complete, the LED will go dark. Expect approximately five hours of use before needing a new charge.



**Do NOT** fully discharge the battery. We recommend re-charging when the battery icon indicates that 50% of power or less remains. Our engineers advise that the battery likes to be topped off.



### **Input Jack**

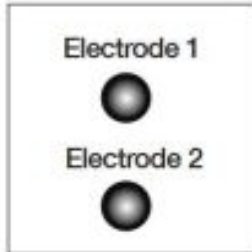
This port allows you to provide the frequency input from an outside source. Connect one end of your input cable here. (This is the white cable with a male plug on each end.) You will use this to connect one end of your input cable. The other end goes to the headphone jack on your cd player, computer, tablet, or smartphone. This is how the Music gets to your machine, providing the tactile experience. When using this feature, the screen will indicate "Tactio® mode".





### Headphone Jack (TACTIO®)

This port allows you to listen to the music you have selected. Be sure to use headphones or earphones with a volume control, as your music player must have the volume at maximum. Listen to your favorite tunes through your Model A (with the electrodes in place on your palms) and you will have a tactile sensation of your music! A further option is to stream specific frequencies or series of frequencies from an alternative source.



### Electrode Ports

Insert an electrode wire into an ELECTRODE JACK. *(Beginners use only one electrode wire, which splits.*

*This provides a negative and a positive.)* Be sure to insert the larger plug on the wire in a straight downward motion.

*(Do not apply torque to the connection when placing or removing electrode wire from the port. This may damage the port of your Model A.)*

### Activity Light

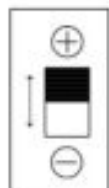


This light (set in between the Electrode ports), indicates that there is output and the electrode wires are active. This means that there is current moving through the wires.

## PLEASE NOTE

The **ACTIVITY LIGHT** will illuminate briefly when the power switch is turned on. It will darken until your selected track is playing.

When using the lower tracks, (most notably on track 1), the **ACTIVITY LIGHT** blinks or pulses. This indicates the slower pulses of the frequencies on the lower tracks. As the frequencies become higher, the green light will become solid.

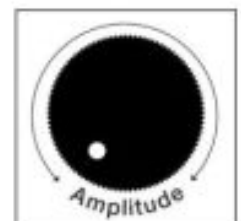


### Polarity Switch

This switch changes the direction of the electron flow, allowing for a more nuanced experience.

### Amplitude Dial

The **AMPLITUDE DIAL** is a ten-turn potentiometer dial that controls the amount of output, meaning the intensity of the signal. Output is measured in volts as indicated on the meter. **One full revolution equals 10 percent of the power.**





### Display Screen

JWLABS' touch screen will appear when the Model A4 is turned on. You must press the screen (not just touch) to access the menu.

### Welcome Screen

1. The Battery Icon, which appears in upper right-hand corner of the touch screen, indicates the amount of charge available.



2. Menu Selections: Favorites / A - E / F - M / N - Z / All / GA Tracks

### Selecting Your Title

#### Individual Menu Screen



Use the Page Indicator and Directional Arrows to locate your session.





## Session Screen



Press the Green Arrow to Play



A Yellow Pause button will appear while in use.



Press the Red Square to Stop



The Scroll Bar indicates elapsed time.

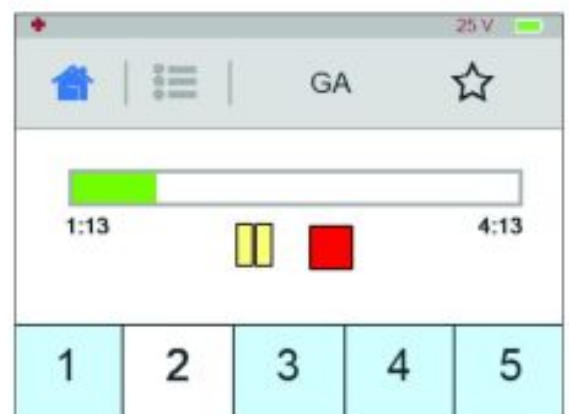


The Voltage Indicator located to the left of the Battery Icon on the display screen indicates the output being used (measured in Volts). The maximum is 80 Volts.

## Notes to Remember

- All new users, or people who are beginning after a long hiatus will begin with Track 2 of General Alignment, building their time as recommended above.
- General Alignment (GA Tracks) is the only session which is comprised of five tracks of various lengths.
- All other Titled Sessions are composed of four tracks, each being approximately thirty minutes long.
- You will rarely, if ever, use full power and only on the highest tracks. However, It's normal to need extra power when the electrodes are placed on the soles of your feet.

Model A4.1 offers the FAVORITES option.  You can **FAVORITE** sessions by pressing the star when your title is selected (the star will become yellow when session title is selected). This feature allows you to access your commonly used frequency sessions from the Favorites menu on the welcome screen without going through the entire menu.



- We advise that experienced users employ their device no more than an hour per day.
- We recommend that you drink plenty of water before, during and/or after your sessions.

## **Preparing for Your Session**

CAUTION: Make sure your Model A is powered off and the amplitude is in the power down position before beginning these steps.

**BEGINNERS will use only the General Alignment (GA) session.**

1. Ensure that the polarity switch is in the positive position. (This indicates that your red tipped electrode wire is positive.)
2. Separate the red and white ends of your electrode wires to about 12 inches. Insert the pins on the ends of the wires into the port on the electrode patches. Place the electrode patch with the red lead wire (indicating positive) onto your right palm and the electrode patch with the white lead wire (indicating negative) onto your left palm.
3. Power on your Model A unit. Press the home screen to bring up the main menu. Select GA Tracks (General Alignment, located in the lower right corner), then select TRACK 2.
4. With the amplitude turned down and the electrode patches in place on your palms, press PLAY to begin your session. (We recommend beginning with TRACK 2 because TRACK 1 is more intense.)
5. Turn the AMPLITUDE clockwise to a level that is COMFORTABLY STRONG, but not more than four to five turns. This guidance generally applies to the lower tracks of any of the recordings. It's normal to tolerate more amplitude on the higher tracks. Turn the AMPLITUDE all the way down if you pause during a session as well as between the tracks of your session.
6. At the end of your session, turn the AMPLITUDE all the way down (counter clockwise). Turn the machine off.
7. Remove electrode patches from your palms and place them back onto the plastic shield provided. This will protect the patches and help them last longer. Remove all replaceable wires from your unit and close the case.

8. If you would like to use the Tactio® feature, insert one end of the Input Cable into the jack marked “Input” and the other end of the Input cable into the headphone jack of your media source.

### **Basic Instructions – GENERAL ALIGNMENT (GA)**

We recommend that you begin your exploration conservatively, say with a ten – fifteen minute session. (This is true even for folks who have used other Rife machines.) Allow your body to get used to the experience before gradually building up your time to about an hour.

Our General Alignment Rife session is where everyone begins.

It’s ideal for beginners AND for folks re-starting on their machine after a lengthy furlough.

This session is also excellent for routine maintenance. The healthy person will be able to move consistently through the tracks of the General Alignment (GA) session smoothly. Our Rife sessions are divided into tracks. The lower tracks deliver the lower frequencies, moving higher as we go up in tracks, the highest being the last track of a given session. You will note a different sensation on each track at the place of contact (usually palms and/or soles of feet).

Most users will begin with Track 2 for not more than 10 minutes per day, five days in a row, taking two days off each week. (In certain circumstances, the user will begin with Track 5 (please call us for more information). This is a five minute track.

Start each track before increasing Amplitude. This will avoid any sensation of a sudden burst of output.

### **Begin as follows**

- Track 2 (10 minute track)
- After completing this Rife session for 3-5 days, introduce ten minutes of Track 3 —  
After a couple days here, bring in ALL of track 3.
- After 3-5 days of tracks 2 and 3, add Track 4 for ten minutes. When you have completed 3 to 5 days of this, bring in ALL of Track 4 and Track 5.

- When you have completed 2-5, you may circle back to Track 1 — We're sometimes as low as 3hz on the beginning of any Track 1.
- You will now use the entire session, tracks 1 through 5. Tracks 1 through 5 comprise the entire General Alignment session, totaling about 73 minutes.
- You will note that the frequencies on the lower tracks are quite slow. They have a more pronounced "beat" and you will prefer to have the amplitude lower than on the other tracks. This is perfectly normal. The final track of any recording, on the other hand, is composed of much higher frequencies which require more power. You will notice a desire to intensify the amplitude accordingly.
- Set the amplitude to your comfort level. Feel free to adjust it at any time, given the range of frequencies you are using. You may wish to make adjustments to the amplitude, especially when you are using Music as the source of your frequencies. Each instrument has a different "voice" and each type of music has a different rhythm. The nature of your music selection may prompt you to adjust the amplitude higher or lower as you progress through each musical selection. This is normal.

## **Outline of General Alignment (GA) Session**

Track 1 – Delivers 3 – 33hz (23 minute sweep)

These frequencies are very slow. Some are slower than our brain waves in the waking state. For this reason, people sometimes feel more calm when using this track. Others may feel more energized. We recommend that users add this track to their routine only after they have progressed through tracks 2-5.

Track 2 – Delivers 33 – 404hz (10 minute sweep)

These frequencies remain in the lower end of the range which we address. This is where beginners initiate their exploration.

Track 3 – Delivers 383hz – 700hz (17 minute sweep)

These mid-range frequencies will have a noticeably different feel from the ones in the lower range.

Track 4 – Delivers 900 – 4,000hz (20 minute sweep)

This higher mid-range of frequencies may prompt you to desire more amplitude. It's okay to turn the amplitude up to a level that's "comfortably strong".

Track 5 – Delivers 3300 – 5,000hz (5 minute sweep)

These higher frequencies will feel much more subtle.

## **MODEL A FREQUENCY SESSIONS**

These frequency sessions have been expertly hand tuned from our old style analog Model

B. With supremely refined tuning, we have emphasized traditional target numbers and we've employed sweeping techniques which span the entire spectrum of therapeutic frequencies.

JWLABS devices are intended for General Wellness and Entertainment only. No health claims are made or implied.

**A**

A01\_DOM  
A02\_SCE  
A03\_CID  
A04\_NEQ  
A05\_TIN  
A06\_ENO  
A07\_HES  
A08\_DSQ  
A09\_COH  
A10\_ZHE  
A11\_IGN  
A12\_LER  
A13\_OPE  
A14\_ENO  
A15\_EMI  
A16\_EUR  
A17\_ORE  
A18\_THR  
A19\_TIS  
A20\_USQ  
A21\_XIE  
A22\_PEN  
A23\_PET  
A24\_CQQ  
A25\_TER  
A26\_TRI  
A27\_THR  
A28\_THM  
A29\_TRO  
A30\_AXI  
A31\_HLE  
A32\_TOI

**B**

B01\_OLI  
B02\_CKA  
B03\_LLI  
B04\_RDQF  
B05\_LAD  
B06\_IST  
B07\_OODD  
B08\_OOPH  
B09\_OOPL  
B10\_ILS  
B11\_NESB  
B12\_EAS  
B13\_EAST  
B14\_EATH  
B15\_IGHD  
B16\_ONC  
B17\_UIS  
B18\_BONP  
B19\_NIO  
B20\_RNSG  
B21\_RNSR  
B22\_RSI  
B23\_TTEL

**C**

C01\_NCEG  
C03\_NDIA  
C04\_RBU  
C05\_RDI  
C06\_RPA  
C07\_TAR

C08\_ARR  
C09\_REBP  
C10\_REBF  
C11\_RVIL  
C12\_RVI  
C13\_EMO  
C14\_ICK  
C15\_ILB  
C16\_ILDD  
C17\_LDFC  
C18\_LDHC  
C19\_LDSC  
C20\_LDSH  
C21\_LIC  
C22\_LIT  
C23\_NJU  
C24\_NST  
C25\_NVU  
C26\_RNS  
C27\_STA  
C28\_AMP  
C29\_OHN  
C30\_TSQ  
C31\_STI

**D**

D01\_NDR  
D02\_AFN  
D03\_PRE  
D04\_TOX  
D05\_ABE  
D06\_ARR

D07\_GES  
D08\_PTH  
D09\_STEO  
D10\_STES  
D11\_ZZI  
D12\_OPS  
D13\_UGQA  
D15\_SME  
D16\_SPE

**E**

E01\_OLI  
E02\_RSQ  
E03\_ZEM  
E04\_EMA  
E05\_ECTS  
E06\_LARG  
E09\_ILE  
E10\_STBV  
E12\_OPH  
E13\_STAT  
E14\_ESTR  
E15\_ESQ

**F**

F01\_CIAC  
F02\_CIAP  
F03\_INT  
F04\_SCI  
F05\_TIG  
F06\_VER  
F07\_BRO

F08\_SSU  
F09\_STU  
F10\_ATU  
F11\_UQQ  
F12\_UKE  
F13\_ODQP  
F14\_OTSO  
F15\_OST  
F16\_NGU

**G**

G01\_LLQ  
G02\_LLS  
G03\_NGR  
G04\_STR  
G05\_AND  
G06\_ANDF  
G07\_AUC  
G08\_ITE  
G09\_NAD  
G10\_NOR  
G11\_UTQ  
G12\_AVE  
G13\_MSQ

**H**

H01\_IRQ  
H02\_LLU  
H03\_NGO  
H04\_YQFE  
H05\_ADQP  
H06\_ADA

H07\_ART  
H08\_MOR  
H09\_MRR  
H10\_PAT  
H11\_RNI  
H12\_RNID  
H13\_RPE  
H14\_CCO  
H15\_PQPA  
H16\_VES  
H17\_ARS  
H18\_TQFL  
H19\_DRO  
H20\_PER  
H21\_PRC  
H22\_PRT  
H23\_POX

## I

I01\_EOC  
I02\_POT  
I03\_CREH  
I04\_DIG  
I05\_FANP  
I06\_FEC  
I07\_FECD  
I08\_FLA  
I09\_FLZ  
I10\_JUR  
I11\_SECB  
I12\_SOM  
I13\_TEL  
I14\_TERN  
I15\_TESI  
I16\_TESS  
I17\_TESG  
I18\_TOX  
I19\_RIT  
I20\_CHI

## J

J01\_UND  
J02\_INT

## K

K01\_DNEG  
K02\_EEQP

## L

L01\_CTA  
L02\_SSI  
L03\_XAT  
L04\_PRO  
L05\_UCO  
L06\_UKE  
L07\_UKO  
L08\_VERG  
L09\_COMA  
L10\_MBA  
L11\_MBAV  
L12\_NGS  
L13\_PUS  
L14\_MEQD  
L15\_MPHS

## M

M01\_LAR  
M02\_ASL  
M03\_LAN  
M04\_MOR  
M05\_NIED  
M06\_NIN  
M07\_NOR  
M08\_NSE  
M09\_NSTC  
M10\_NTAD  
M12\_TAL  
M13\_GRA  
M14\_NGO  
M15\_TIOS  
M16\_LTIS  
M17\_MPS  
M18\_SCL  
M19\_SCUD  
M20\_COP

## N

N01\_USE  
N02\_CKQ  
N03\_PHR  
N04\_RVE  
N05\_RVEI  
N06\_URA  
N07\_URS  
N08\_URI  
N09\_URO  
N10\_COT  
N11\_SEQD

## O

O02\_CIPN  
O03\_CHI  
O04\_TEO  
O05\_TFY  
O06\_ARIG

## P

P01\_INQG  
P02\_NCR  
P03\_RAS  
P04\_RAT  
P05\_RKI  
P06\_LVI  
P07\_RIC  
P08\_RID  
P09\_AGO  
P10\_ARY  
P11\_LES  
P12\_NWO  
P13\_ACE  
P14\_ASM  
P15\_EUR  
P16\_EUM  
P17\_ISOG  
P18\_LIO  
P19\_LYP  
P20\_OST  
P21\_ORI

P22\_OSI  
P23\_ORR

## R

R01\_BIE  
R02\_EUM  
R03\_EUMA  
R04\_INI  
R05\_CKE  
R06\_NGW

## S

S01\_RCO  
S02\_ARLF  
S03\_IAT  
S04\_URV  
S05\_MIQP  
S06\_ING  
S07\_NUS  
S08\_NUT  
S09\_INQ  
S10\_EEPS  
S11\_IPPD  
S12\_ALL  
S13\_ELL  
S14\_ELLM  
S15\_EEZ  
S16\_REQT  
S17\_ASM  
S18\_ERM  
S19\_LEE  
S20\_OND  
S21\_RAI  
S22\_AMM  
S23\_APH  
S24\_ERI  
S25\_OMA  
S26\_ONE  
S27\_REP  
S28\_REX  
S29\_ROK  
S30\_YQQ

S31\_NST  
S32\_PRA  
S33\_RGE  
S34\_ELL  
S35\_NDR  
S36\_PHI

## T

T01\_STE  
T02\_TAN  
T03\_ALA  
T04\_ROM  
T05\_ROB  
T06\_RUS  
T07\_YMU  
T08\_YRO  
T09\_SSU  
T10\_NSI  
T11\_OTH  
T12\_XICR  
T13\_ACH  
T14\_AUM  
T15\_BER  
T16\_MOR  
T17\_PHOF

## U

U01\_CER  
U03\_ETH  
U04\_TIC

## V

V01\_RUS

## W

W01\_RTS  
W02\_IPL  
W03\_RMS

## Y

Y01\_LLOF

# TROUBLESHOOTING

Problem: Not feeling current/No output.

First, make sure your activity light is illuminated to bright green. If not, be sure that the volume of your media player is at maximum. If it is, check your connection at the electrode jack.

Check that the connections of electrode wires are firmly in place.

If you can't feel the current on a higher frequency, try turning up the amplitude.

It's normal to require more power on the higher frequencies, which are on the higher tracks. Some people will not feel it at this level, others do. Both are normal.

Check the pins on ends of the wires, and make sure they aren't darkened from use. If they are, you can easily clean them using an emery board or fine sandpaper.

Test your other set of wires. The tiny copper wires inside the cable may be broken. If so, it's time to order a replacement set.

Another possibility is that there is a break in one or more of the very fine wires that compose the electrode wires. In this case, they will have to be replaced.

### **Problem: Irritation of skin at site of electrode placement.**

With continued use, the adhesive on the patches degrades and may interfere with the quality of your contact.

**REPLACE THE PATCHES WITH NEW ONES.**

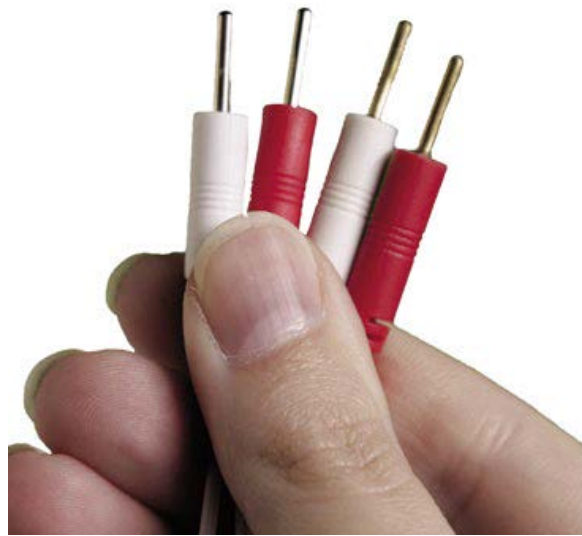
With continued use, the pins on the ends of the electrode wires may become blackened from carbon build-up from the patches. **USE A FINE EMERY BOARD OR SANDPAPER TO CLEAN PINS.**

Typically, our users are placing electrodes on the palms or the soles of the feet. The skin at these locations is more robust than other delicate areas. Some people are more sensitive than others, so we suggest that you **REPOSITION THE PATCHES EVERY TEN MINUTES OR SO.** (Pause the recorded sessions and turn the amplitude all the way down before doing this.)

Make sure the pins on the electrode wires are clean.



They may become darkened from multiple uses in the electrode patch. A fine emery board will clean carbon build-up or discoloration. This build-up may interfere with a proper connection.



### **Do You have more questions?**

Email us at [info@jwllabs.com](mailto:info@jwllabs.com)

Or give us a call at 888.891.1122 or 708.356.6513

(We're on Central time.)


### **SUPPLIES**

In the course of using your Wright Laboratories frequency instrument, you will need to re-order supplies from time to time. Please go to <https://jwllabs.com> for a complete list of supplies.

**Wright Laboratories, LLC**

**Read More About This Manual & Download PDF:**

# Documents / Resources

	<a href="#">jwlabs A4.1 Rife Machine [pdf]</a> Instruction Manual A4.1 Rife Machine, A4.1, Rife Machine, Machine
---	---

## References

- [User Manual](#)

📎 A4.1, A4.1 Rife Machine, jwlabs, Machine, Rife

📁 jwlabs Machine

---

## Leave a comment

Your email address will not be published. Required fields are marked \*

Comment \*

Name

Email

Website

☐ Save my name, email, and website in this browser for the next time I comment.

**Post Comment**

## Search:

e.g. whirlpool wrf535swhz

**Search**

[Manuals+](#) | [Upload](#) | [Deep Search](#) | [Privacy Policy](#) | [@manuals.plus](#) | [YouTube](#)

This website is an independent publication and is neither affiliated with nor endorsed by any of the trademark owners. The "Bluetooth®" word mark and logos are registered trademarks owned by Bluetooth SIG, Inc. The "Wi-Fi®" word mark and logos are registered trademarks owned by the Wi-Fi Alliance. Any use of these marks on this website does not imply any affiliation with or endorsement.