



JVC KM-IP8-S4 Input Studio Switcher Powered User Guide

[Home](#) » [JVC](#) » JVC KM-IP8-S4 Input Studio Switcher Powered User Guide 

JVC

Quick Guide



KM-IP8/S4

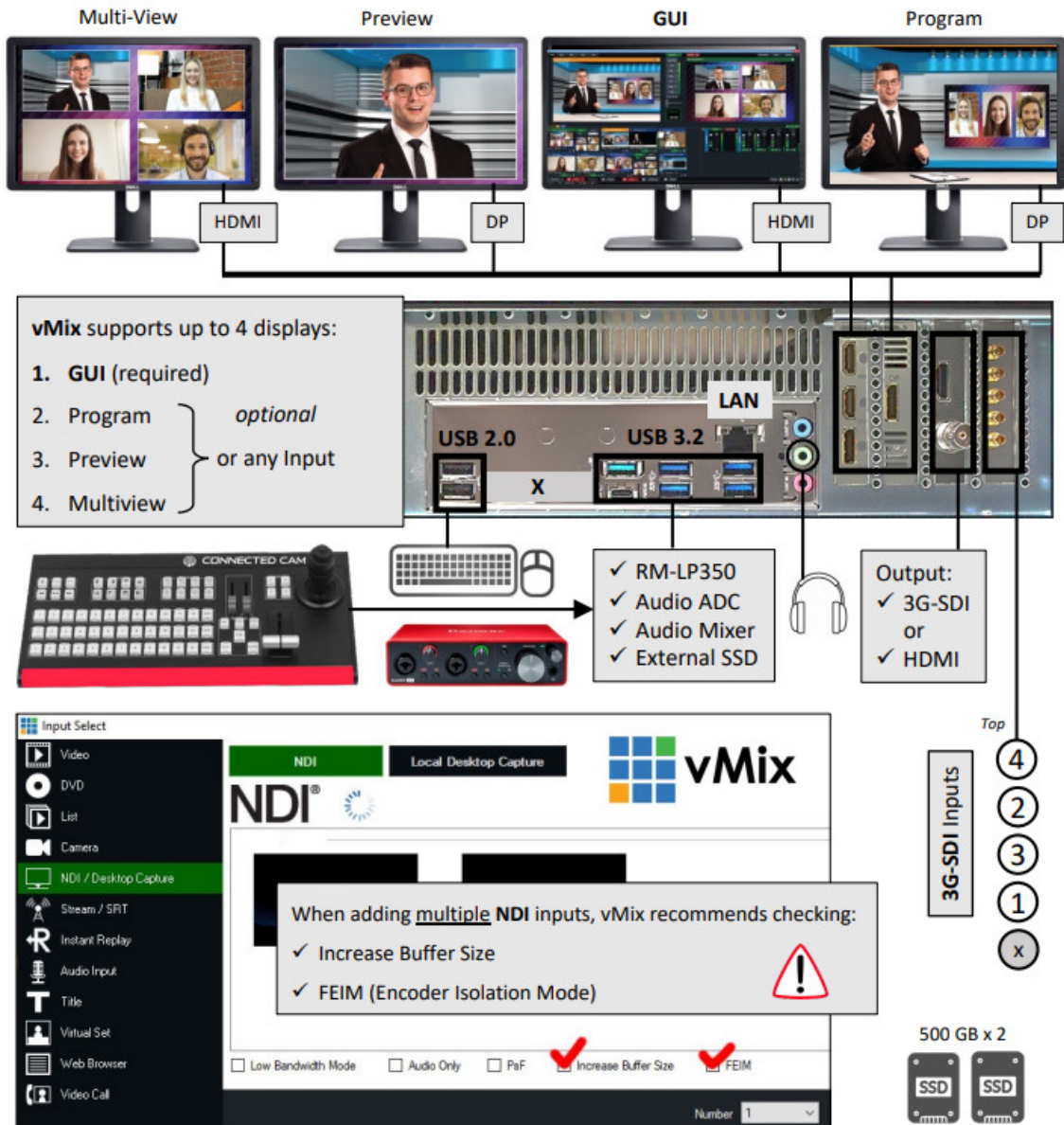
Contents

- [1 In the box:](#)
- [2 Documents / Resources](#)
- [2.1 References](#)

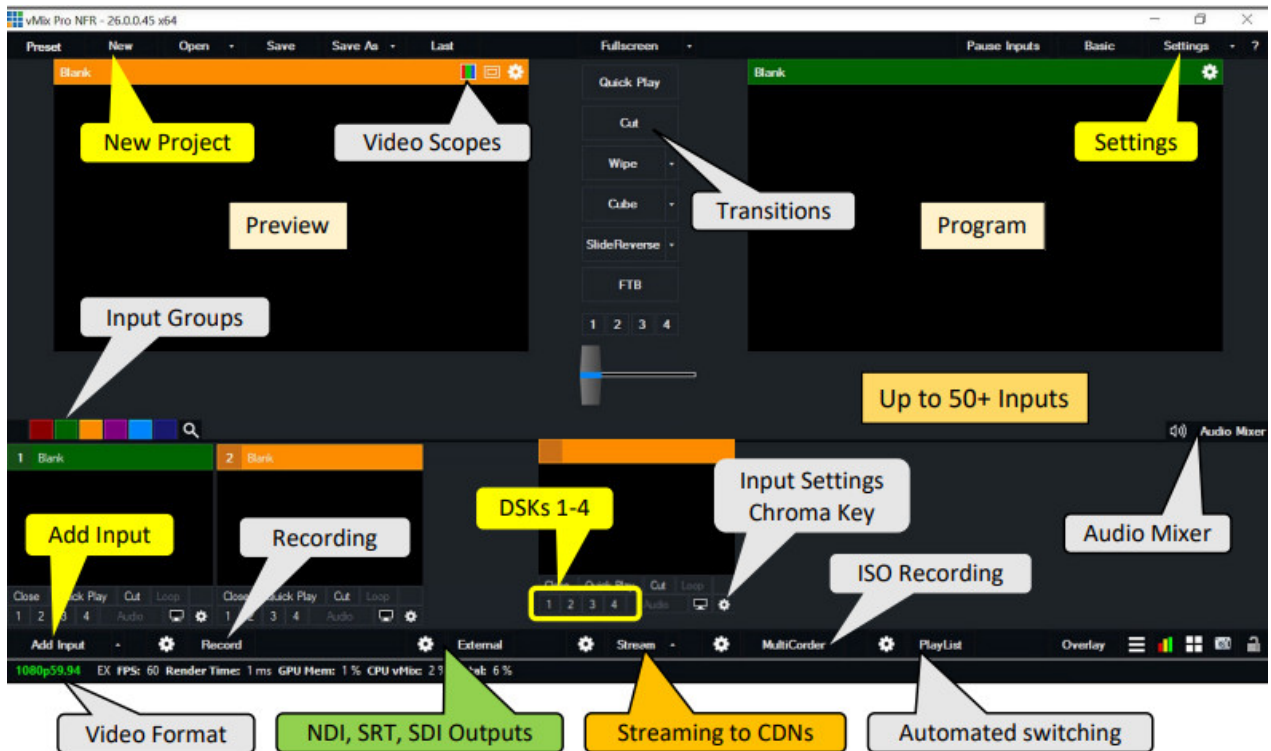
In the box:

- KM-IP8/S4 – 2U high-performance PC
- Power cord

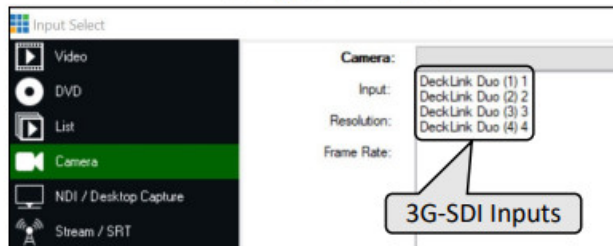
- Keyboard, Mouse
- 4 x Din 1.0/2.3 to BNC Female cables (S4 only)



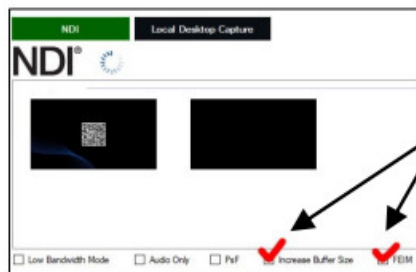
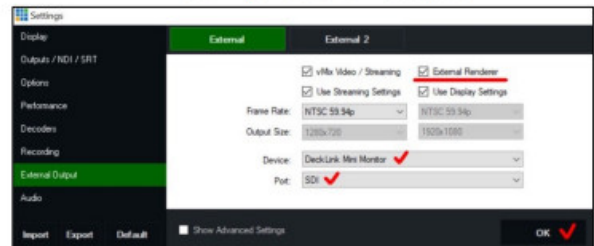
The KM-IP8/S4 hardware supports 50+ inputs including 4 x 3G-SDI (S4 only) and up to 8 x 1080 60p NDI inputs for live cameras. vMix 4K license (installed) allows up to 1,000 inputs but this reference configuration “Ruby” is recommended for 1080 60p production with up to 50 inputs including up to 12 live cameras. Every input can be configured as a live camera, video clip, audio, animated title, replay, virtual set, etc. Four (4) down-stream keys (DSK) provide instant overlay of any input on program output. Each input can also be “sandw i ched” with up to 10 layers/inputs of overlay. All inputs support chroma key.



Adding 3G-SDI inputs



Configure 3G-SDI output



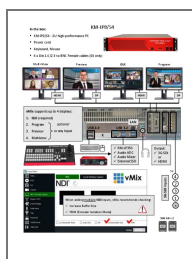
When adding multiple NDI inputs, vMix recommends checking:

- ✓ Increase Buffer Size
- ✓ FEIM (Encoder Isolation Mode)



Product Support contact information:
JVC Pro Video (866)582-8723 proinfo@jvc.com

Documents / Resources



[JVC KM-IP8-S4 Input Studio Switcher Powered](#) [pdf] User Guide

KM-IP8-S4 Input Studio Switcher Powered, KM-IP8-S4, Input Studio Switcher Powered, Studio Switcher Powered, Switcher Powered, Powered

References

- [User Manual](#)

Manuals+. Privacy Policy

This website is an independent publication and is neither affiliated with nor endorsed by any of the trademark owners. The "Bluetooth®" word mark and logos are registered trademarks owned by Bluetooth SIG, Inc. The "Wi-Fi®" word mark and logos are registered trademarks owned by the Wi-Fi Alliance. Any use of these marks on this website does not imply any affiliation with or endorsement.