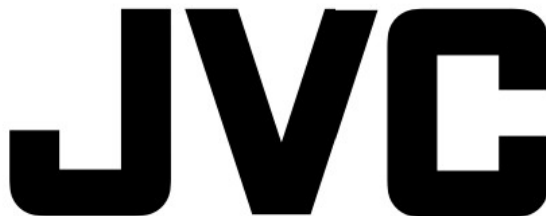




JVC HC-CW1F Card Reader Writer Instructions

[Home](#) » [JVC](#) » JVC HC-CW1F Card Reader Writer Instructions 



HC-CW1F Card Reader Writer Instructions

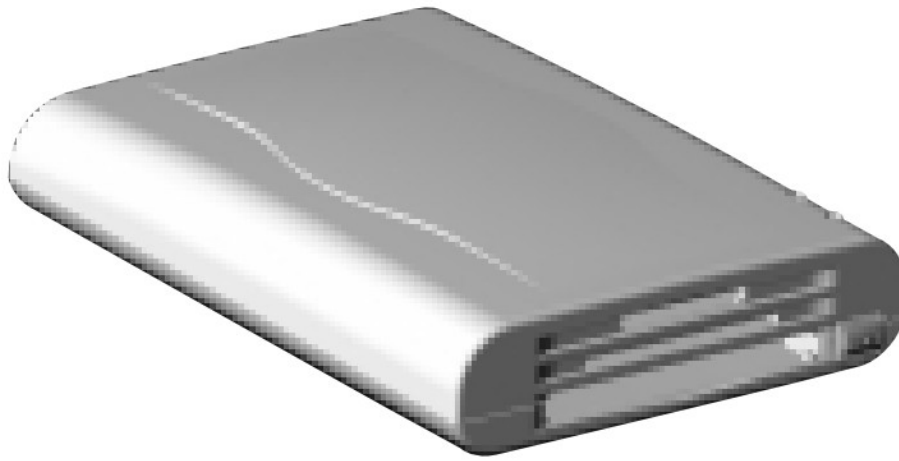
Contents

- 1 HC-CW1F Card Reader Writer
- 2 FCC INFORMATION
- 3 FEATURES
- 4 PACKAGE CONTENTS
- 5 OPERATION
- 6 SOFTWARE INSTALLATION
- 7 USING THIS UNIT
- 8 UNINSTALLATION OF SOFTWARE
- 9 TROUBLESHOOTING
- 10 USING THIS UNIT
- 11 SPECIFICATIONS
- 12 Documents / Resources
 - 12.1 References

HC-CW1F Card Reader Writer

Compatible Models

Models with either preinstalled Windows® 98/98SE/ ME/2000, preinstalled MAC OS 8.6 or later and having a USB interface. Operation may not be possible on some models.

**For Customer Use:**

Enter below the Model No. and Serial No. which is located on the bottom of cabinet. Retain this information for future reference.

Model No..... Serial No.....

FCC INFORMATION

This device complies with Part 15 of the FCC Rules. Operation is subject to the following two conditions:

1. This device may not cause harmful interference.
2. This device must accept any interference received, including interference that may cause undesired operation.

Note: This equipment has been tested and found to comply with the limits for a Class B digital device, pursuant to Part 15 of the FCC rules. These limits are designed to provide reasonable protection against harmful interference in a residential installation. This equipment generates, uses and can radiate radio frequency energy and, if not installed and used in accordance with the instructions, it may cause harmful interference to radio communications. However, there is no guarantee that interference will not occur in a particular installation. If this equipment does cause harmful interference to radio or television reception, which can be determined by turning the equipment off and on, the user is encouraged to try to correct the interference by one or more of the following measures:

- Reorient or relocate the receiving antenna.
- Increase the separation between the equipment and receiver.
- Connect the equipment into an outlet on a circuit different from that to which the receiver is connected.
- Consult the dealer or an experienced radio/TV technician for help.

CAUTION – Changes or modifications not approved by JVC could void user's authority to operate the equipment.

Contact

Address: JVC AMERICAS CORP. 1700 Valley Road Wayne, N.J. 07470

Telephone: (973) 315-5000

WARNING:

TO REDUCE THE RISK OF FIRE OR ELECTRIC SHOCK, DO NOT EXPOSE THIS APPLIANCE TO RAIN OR MOISTURE.

INFORMATION (for CANADA)

This Class B digital apparatus meets all requirements of the Canadian Interference-causing Equipment Regulations.

“SOME DO'S AND DON'TS ON THE SAFE USE OF EQUIPMENT”

This equipment has been designed and manufactured to meet international safety standards but, like any

electrical apparatus, care must be taken if you are to obtain the best results and safety is to be assured.

Do read the operating instructions before you attempt to use the equipment.

Do ensure that all electrical connections (including the plug, extension cord and interconnections between pieces of equipment) are properly made and in accordance with the manufacturer's instructions. Switch off and withdraw the plug when making or changing connections.

Do consult your dealer if you are ever in doubt about the installation or operation or safety of your equipment.

Do be careful with glass panels or doors on equipment.

DON'T continue to operate the equipment if you are in any doubt about it working normally, or if it is damaged in any way—switch off—withdraw the plug and consult your dealer.

DON'T remove any fixed cover as this may expose dangerous voltages.

DON'T leave equipment switched on when it is unattended unless it is specifically stated that it is designed for unattended operation or has a standby mode. Switch off using the switch on the equipment and make sure that your family know how to do this. Special arrangements may need to be made for infirm or handicapped people.

DON'T use equipment such as personal stereos or radios so that you are distracted from the requirements of road safety. It is illegal to watch television when driving.

DON'T listen to headphones at high volume as such use can permanently damage your hearing.

DON'T obstruct the ventilation of the equipment, for example with curtains or on soft furnishings.

Overheating will cause damage and shorten the life of the equipment.

DON'T use makeshift stands and NEVER fix legs with wood screws. To ensure complete safety always fit the manufacturer's approved stand or legs with the fixing screws supplied according to the instructions.

DON'T allow electrical equipment to be exposed to rain or moisture. ABOVE ALL

NEVER let anyone especially children push anything into holes, slots or any other opening in the case. This could result in a fatal electrical shock. NEVER guess or make changes with electrical equipment of any kind. It is better to be safe than sorry!

Thank you for purchasing this JVC product.

Before you begin operating this unit, please read the instructions carefully to be sure you get the best possible performance.

If you have any questions, consult your JVC dealer.

CAUTION

To reduce the risk of electrical shocks, fire, etc.:

1. Do not remove screws, cover or cabinet.
2. Do not expose this appliance to rain or moisture.

IMPORTANT

1.
 - Select a place which is level, dry and neither too hot nor too cold (between 0°C and 40°C/32°F and 104°F).
 - Keep away from direct sunlight.
 - Do not put it too close to a heater.
2. Malfunctions, etc.
 - Do not insert any metallic object.
 - Do not allow water to get inside.

FEATURES

Three different types of memory card slots compatible with SD Memory Card/ MultiMediaCard, SmartMedia, PC Card/CompactFlash (using PCMCIA TYPE II adapter)

- Available for Memory Stick by using PCMCIA adapter (not provided)
- USB Interface for high-speed image transfer (1.5 MB/sec.)
- Hot-Swap for inserting/ejecting a card without having to turn off the PC power

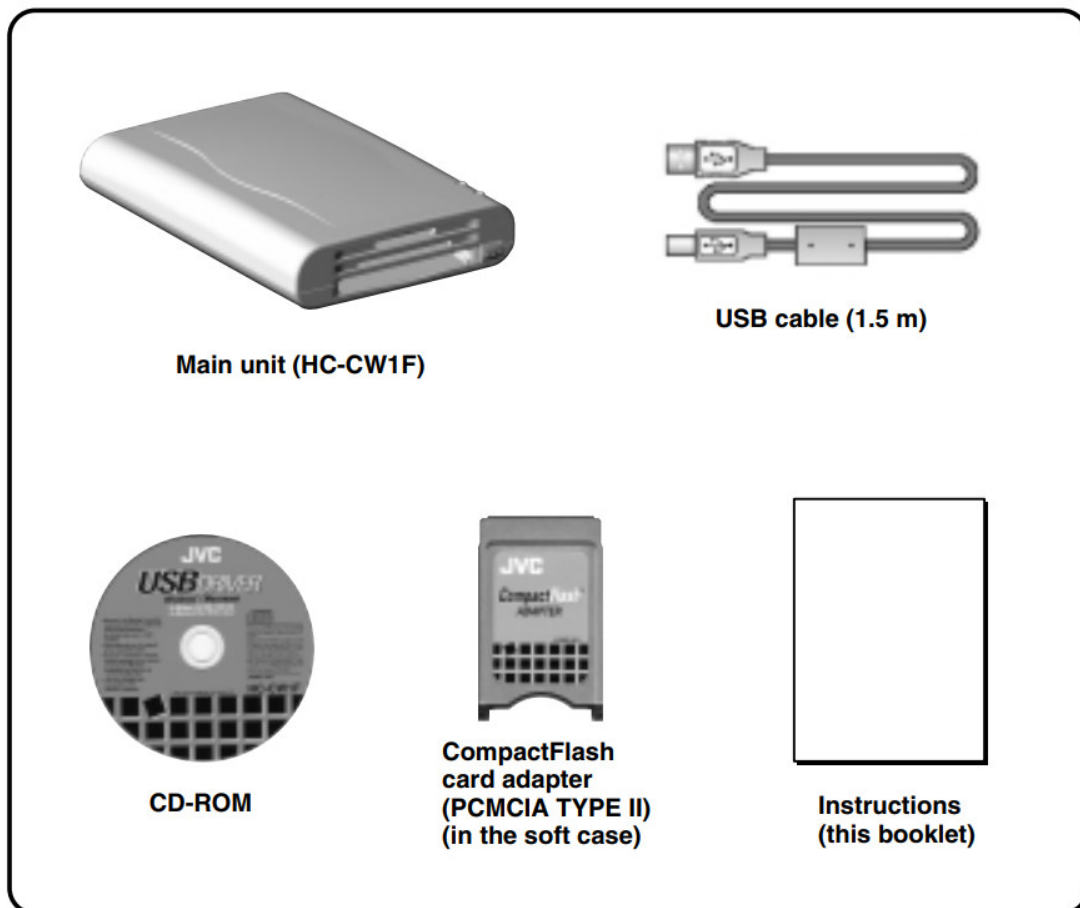
- PCMCIA adapter for CompactFlash card provided
- Compatible OS: IBM PC/AT Windows 98/98SE/2000/Me Macintosh Mac OS 8.6 or later
- Microsoft and Windows are either registered trademarks or trademarks of Microsoft Corporation in the United States and/or other countries.
- Macintosh is a registered trademark of Apple Computers, Inc.
- Other trademarks are the property of their respective owners.

Notes

- Cannot be used to read copy-protected audio data.
- Cards other than a memory card such as a modem card and LAN card cannot be used.
- Compatible with preinstalled OS only.
- iMac firmware update version 3.0 or later is required. Please make sure that you have the correct version of iMac firmware.
- JVC accepts no liability for any damages or data loss that may arise from operating this unit.

PACKAGE CONTENTS

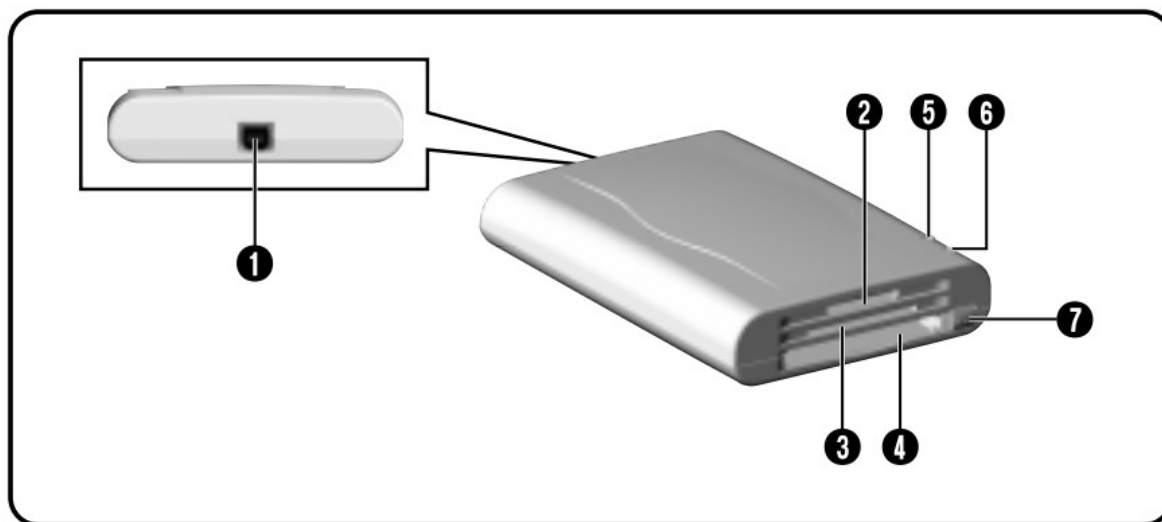
The following accessories are included with the HC-CW1F card **reader/writer**.



Note

The CompactFlash card adapter provided with this unit is compatible with standard 3.3-mm CompactFlash cards. It is not compatible with large-capacity 5-mm CompactFlash cards.

NAMES OF PARTS AND THEIR FUNCTIONS



1. USB cable connector Connect the provided USB cable.
2. SD Memory Card/Multimedia Card insertion slot Insert the SD Memory Card or Multimedia Card with the metal terminal downward.
3. Smart Media insertion slot Insert the Smart Media with the metal terminal upward.

Note

SmartMedia accepts both 5 V and 3.3 V.

4. PC Card/CompactFlash insertion slot Insert the PC Card/CompactFlash with the face up. Before inserting the CompactFlash, first attach the provided PCMCIA TYPE II adapter.

Note

When a commercially available Memory Stick Adapter (PCMCIA TYPE II) is used, a Memory Stick can be inserted into this slot.

5. POWER LAMP

Lights green when this unit is connected to a PC and is ready for use. The unit cannot be used if the green light goes out.

6. ACCESS LAMP

Lights/blinks red when the Memory Card is being accessed. Do not remove the card while this lamp lights/blinks. Doing so may damage the data on the card and may also cause the unit to malfunction.

7. PC Card Eject button

Press to remove the card from the PC Card/CompactFlash insertion slot. The card is ejected about halfway. Remove the card completely by hand.

OPERATION

Operating procedures differ depending on the computer operating system you are using. Refer to the section that applies to your system (see below).

- IBM PC/AT Windows 98/98SE/2000/Me Page 10 – 14
- Macintosh Mac OS 8.6 or later Page 15 – 20

ATTENTION:

- This unit may not operate correctly when connected to a USB hub or a PC with a built-in USB hub (more than

one USB connector). If possible, always connect this unit directly to your computer.

- When the same memory card is used in both Mac OS and Windows, the card's memory capacity may not be displayed correctly, or an error message may be displayed while a file is being written.

In this case, it is recommended that you do not use the same card in both systems and that you format the card with the OS you are going to use it with.

Windows 98/98SE/2000/Me

SOFTWARE INSTALLATION

Before you can use this unit with your PC, you must first install the driver software. Perform the following installation before connecting this unit to the PC.

1. Close all open applications.
2. Insert the provided USB driver CDROM into your PC's CD-ROM drive.
3. The installation software will start up automatically in a few seconds. If it does not start up, try one of the following.

Method 1

- Click the [START] button and select [RUN] from the displayed menu.
- Enter (CD-ROM drive name): \SETUP.EXE in the displayed dialog box. (e.g.: D: \SETUP.EXE)
- Click the [OK] button.



Fig. 1



Fig. 2

Method 2

- Double-click [My Computer].
- Double-click the CD-ROM icon.
- The installation software starts up.

If it does not start up and the CDROM window opens, double-click [SETUP.EXE].

4. When the installation software starts up, the operation in Fig. 1 is performed and then the window in Fig. 2 is displayed. In Fig. 2, click [Next]. To stop installation, click [Cancel].

5. In Fig. 2, click [Next] to start installation of the driver software (Fig. 3).
6. When the installation is complete, the window in Fig. 4 is shown. To activate the installed driver software, restart the PC. Select [Yes] and click [Finish] to restart the PC automatically. To restart after closing the installation software, select [No] and click [Finish]. In this case, do not connect this unit to the PC until restarting the PC.



Fig. 3

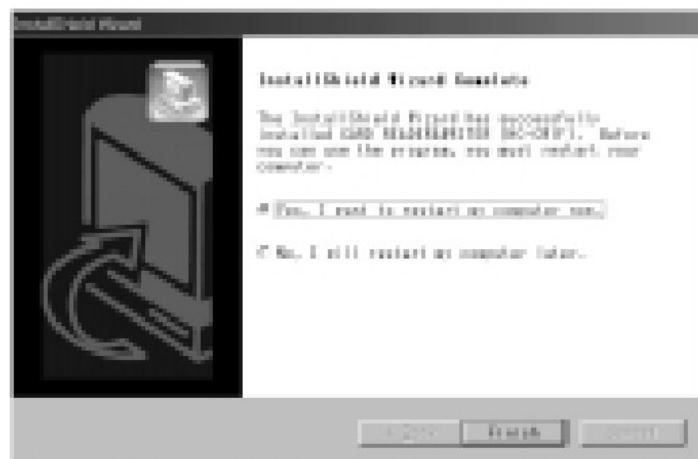


Fig. 4

USING THIS UNIT

Once the driver software has been installed and the PC has been restarted, you can connect this unit to the PC and start using it.

1. Connect the provided USB cable to the USB cable connector of this unit.
 - The plugs at either end of the USB cable are different. Connect the appropriate plug to the connector.
2. Connect the other end of the USB cable to the USB port on the PC.

The operating system will automatically recognize this unit and three removable disk icons are displayed in My Computer (Fig. 5).



Fig. 5

The displayed removable disk drives are assigned drive letters in alphabetical order, excluding (B:).

The drives are assigned to the three memory slots for SmartMedia, PC Card/ CompactFlash and SD Memory Card/Multimedia Card in order.

(e.g. 1: A: FDD, C: HDD, G: CD-ROM)

D: SmartMedia

E: PC Card/CompactFlash

F: SD Memory Card/Multimedia Card

(e.g. 2: A: FDD, C: HDD, F: CD-ROM)

D: SmartMedia

E: PC Card/CompactFlash

G: SD Memory Card/Multimedia Card

Notes

- The first time you use this unit after installing the driver software, you will see the OS recognition process on-screen. Once this unit has been recognized, this process display goes out automatically.
- If the unit is connected to a PC and the PC does not recognize it, check to see if the USB port is set to [Disable]. If the port is disabled, do either of the following:

1. Set all devices in the [universal serial bus control] to [Enable] with the OS device manager.
2. With the PC BIOS setting, set the USB port to [Enable]. For device manager and BIOS setting, refer to the PC's instruction manual.
3. Insert memory cards in the memory card slots.
 - With CompactFlash, first insert the card into the provided CompactFlash card adapter, then into the slot in this unit.

Note

Insert the memory card firmly with the correct orientation. If the card is not inserted properly, it will not be recognized.

4. Double-click the Removable Disk in My Computer corresponding to the inserted memory card to display the contents of the memory card.
5. You can write or erase data on the memory card in the same way as with a floppy disk or hard disk.

Notes

- Formatting the memory card is also performed in the same way as with a floppy disk. However, if the card is formatted in the PC, it may not work in the device in which you plan to use it (digital camera, etc.).

It is recommended that you format the memory card with the device in which you are going to use it.

- Memory cards feature a lever or seal which can be used to prohibit writing. If the memory card is write-protected, you cannot write or erase data on the card. For details, refer to the card's instruction manual.
- Cannot be used for reading copy-protected audio data.

6. To remove the card, do one of the following:
 - SD Memory Card/MultiMediaCard, SmartMedia Pull out the card by hand.
 - PC Card/CompactFlash

Press the PC Card Eject button to pop out the card partway. Then pull out the card by hand.

Note

Do not try to remove a card or disconnect the USB cable when the ACCESS LAMP on this unit lights/blinks. Doing so may damage the data on the card and may also cause the unit to malfunction.

7. Before disconnecting this unit from the PC, always make sure no card inserted in the unit.

UNINSTALLATION OF SOFTWARE

To uninstall the driver software if it is no longer required, first disconnect the unit from the PC, then do the

following procedure.

1. Close all open applications.
2. Insert the provided USB driver CDROM into the PC's CD-ROM drive.
3. The installation software starts up automatically in a few seconds. If it does not start up, try one of the following.

Method 1

- Click the [START] button and select [RUN] from the displayed menu.
- Enter (CD-ROM drive name): \SETUP.EXE in the displayed dialog box. (e.g.: D: \SETUP.EXE)
- Click the [OK] **button**.

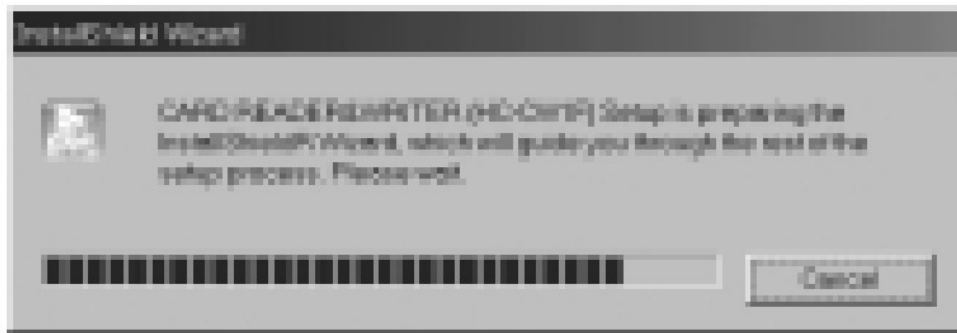


Fig. 6

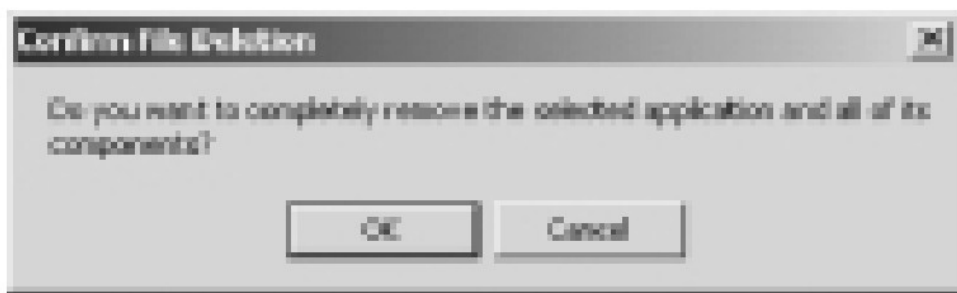


Fig. 7

Method 2

- Double-click [My Computer].
- Double-click the CD-ROM icon.
- The installation software starts up.

If it does not start up and the CDROM window opens, double-click [SETUP.EXE].

4. When the installation software starts up, the operation in Fig. 6 is shown and then the window in Fig. 7 is displayed.

In Fig. 7, click [OK]. To stop uninstallation, click [Cancel].

Note

If the driver software for this unit is not installed in the PC, the installation screen for the driver software is shown (page 10).

5. In Fig. 7, click [OK] to start the uninstallation of the driver software (Fig. 8).
6. When the uninstallation is complete, Fig. 9 is shown. Click [Finish] to end the installation **software**.



Fig. 8



Fig. 9

Note

If you want to use this unit after the driver software has been uninstalled, you will have to reinstall the driver software (page 10).

Windows 98/98SE/2000/Me

TROUBLESHOOTING

If you're having problems with this unit, check this section to see if you can find a remedy before contacting a service center for repairs.

Symptoms	Causes	Remedies	Pages to be referred
Even though this unit is connected to a PC, the PC does not recognize this unit.	The USB port is set to Disable.	1.Set all devices in the [universal serial bus controller] to [Enable] with the device manager of OS. 2.Set the USB port to [Enable] with the PC's BIOS setting. For details of the device manager and BIOS setting, refer to the PC's instruction manual.	11
The POWER LAMP does not light.	The USB cable is not connected correctly.	Connect the USB plugs correctly again by checking the connector form and direction.	11
The removable disk icons are not shown in My Computer.	The driver software is not installed correctly.	Install the driver software correctly again.	10
The inserted memory card is not open.	The memory card is not correctly inserted.	Take out the memory card and insert it again correctly.	12
The memory card can not be used with a digital camera, etc.	When you use this unit, memory card is formatted by the PC.	Format the memory card again with the device in which the card will be used.	12

Mac OS 8.6 or later

SOFTWARE INSTALLATION

Before you can use this unit with your PC, you must first install the driver software. Perform the following installation before connecting this unit to the PC.

1. Close all open applications.
2. Insert the provided USB driver CDROM into your PC's CD-ROM drive.
3. The CD-ROM icon will appear on the desktop in a few seconds (Fig. 1).
4. Double-click the displayed icon. The CD-ROM window appears (Fig. 2).
5. Double-click the icon for the [CARD READER&WRITER Installer]. The installation software will start up automatically.



Fig. 1



Fig. 2

6. When the installation software starts up, Read Me is shown first (Fig. 3). Read the text then click the [Continue] button. The main screen of the installation software appears (Fig. 4).

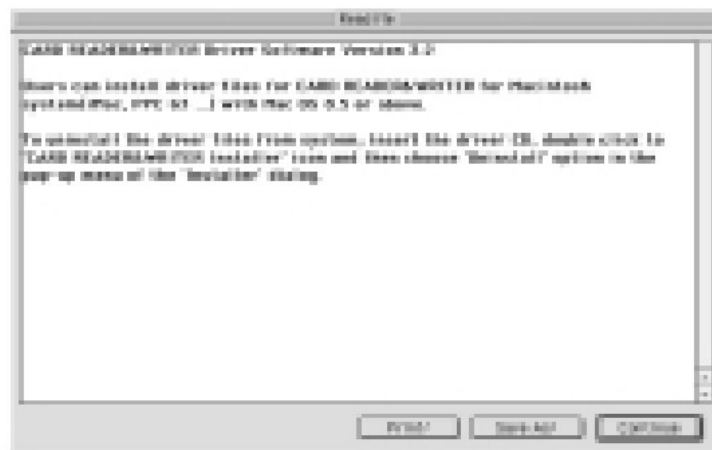


Fig. 3



Fig. 4

7. As shown in Fig. 5, select the driver [CARD READER&WRITER] to be installed.
To change the target for installation, select [Select Folder] as shown in Fig. 6 and select the target folder in the displayed folder select window (Fig. 7).
8. When you have selected a target folder, click the [Install] button. To stop the installation, click the [Quit] button.



Fig. 5



Fig. 6

9. When the Install button is clicked in Fig. 4, a message window appears informing you that all other open applications will be closed by the installation software (Fig. 8). If you do not want the installation software to close open applications, click the [Cancel] button to end the installation. Then, close the open applications yourself and restart the installation procedure. Click the [Continue] button to automatically close open applications and start the installation.
10. When the installation is complete, a message asking you to restart your computer appears (Fig. 9). To activate the installed driver software, restart the PC. Click the [Restart] button to restart the PC automatically. If you want to restart the PC later, click the [Quit] button. In this case, do not connect this unit to the PC until restarting the PC.



Fig. 7

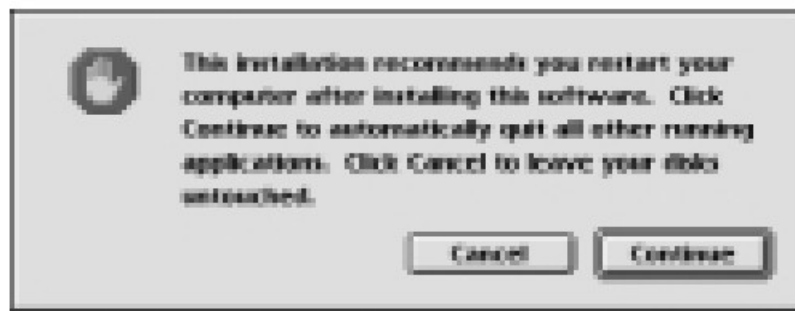


Fig. 8

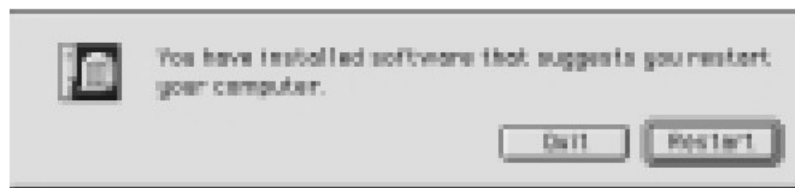


Fig. 9

USING THIS UNIT

Once the driver software has been installed and the PC has been restarted, you can connect this unit to the PC and start using it.

1. Connect the provided USB cable to the USB cable connector of this unit.
 - The plugs at either end of the USB cable are different. Connect the appropriate plug to the connector.
2. Connect the other end of the USB cable to the USB port on the PC. The operating system will automatically recognize this unit and you can start using it.
 - If you are using an iMac and the warning window (Fig. 10) appears, please check to see if you have the latest version of Mac OS and the required iMac firmware update. Refer to Notes in FEATURES (page 6).

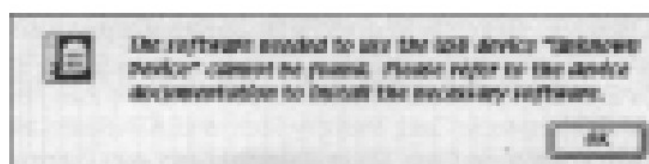


Fig. 10

3. Insert memory cards in the memory card slots.
 - With CompactFlash, first insert the card into the provided CompactFlash card adapter, then into the slot in this

unit.

Note

Insert the memory card firmly with the correct orientation. If the card is not inserted properly, it will not be recognized.

4. The hard disk icon is shown on the desktop in a few seconds (Fig. 11). Double-click the displayed icon to display the contents of the memory card.



Smart Media



PC Card/
CompactFlash



SD Memory Card/
MultiMediaCard

Fig. 11

5. You can write or erase data on the memory card in the same way as with a floppy disk or hard disk.

Notes

- Formatting the memory card is also performed in the same way as with a floppy disk. However, if the card is formatted in the PC, it may not work in the device in which you plan to use it (digital camera, etc.).

It is recommended that you format the memory card with the device in which you are going to use it.

- Memory cards feature a lever or seal which can be used to prohibit writing. If the memory card is write-protected, you cannot write or erase data on the card. For details, refer to the card's instruction manual.
- Cannot be used for reading copy-protected audio data.

6. To remove the card, be sure to move the hard disk icon on the desktop to the trash icon. Then, remove the card with the following procedure.

- SD Memory Card/Multimedia Card, SmartMedia Pull out the card by hand.
- PC Card/CompactFlash

Press the PC Card Eject button to pop out the card partway. Then pull out the card by hand.

Notes

- Do not try to remove a card or disconnect the USB cable when the ACCESS LAMP on this unit lights/blinks. Doing so may damage the data on the card and may also cause the unit to malfunction.

- If you take out the card before moving the hard disk icon on the trash icon, the PC will freeze.

7. Before disconnecting this unit from the PC, always make sure that no card is inserted in the unit.

UNINSTALLATION OF SOFTWARE

To uninstall the driver software if it is no longer required, first disconnect the unit from the PC, then do the following procedure.

1. Close all open applications.
2. Insert the provided USB driver CDROM into the PC's CD-ROM drive.
3. The CD-ROM icon on the desktop is shown in a few seconds (Fig. 12).
4. Double-click the displayed icon. The CD-ROM window is shown (Fig. 13).



Fig. 12



Fig. 13

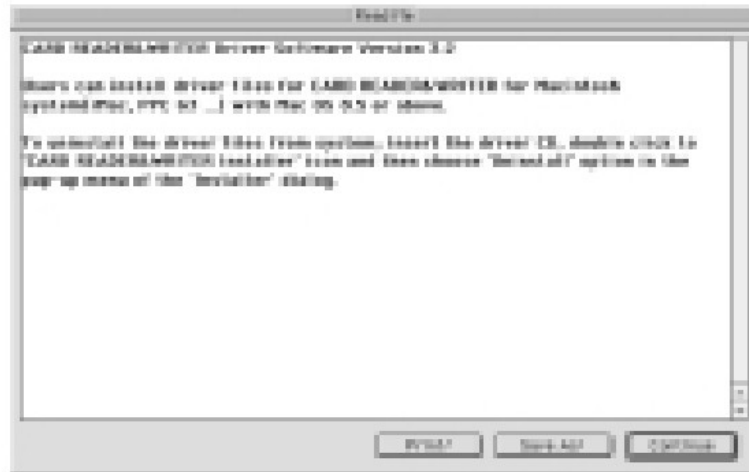


Fig. 14

5. Double-click the [CARD READER& WRITER Installer] icon. The installation software starts up automatically in a few seconds.
6. When the installation software starts up, Read Me is shown first (Fig. 14). Click the [Continue] button to proceed. The main screen of the installation software appears (Fig. 15).
7. Select [Uninstall] from the items in Fig. 16.



Fig. 15



Fig. 16

8. When the selection is complete, click the [Uninstall] button. To stop uninstallation, click the [Quit] button.
9. When uninstallation is complete, a message appears telling you that uninstallation is complete. Under some conditions, you may get a message telling you that some files could not be deleted as shown in Fig. 17. This is normal and is not a problem. Click the [OK] button, then the [Quit] button in Fig. 16 to end uninstallation.

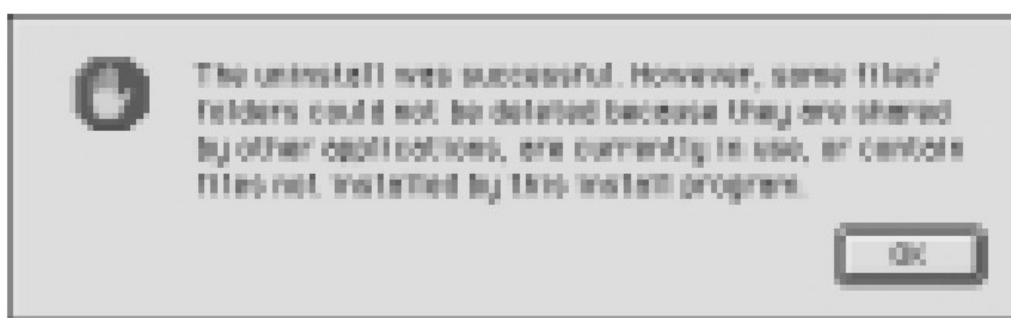


Fig. 17

Note

If you want to use this unit after the driver software has been uninstalled, you will have to reinstall the driver software (page 15).

Mac OS 8.6 or later

TROUBLESHOOTING

If you're having problems with this unit, check this section to see if you can find a remedy before contacting a service center for repairs.

Symptoms	Causes	Remedies	Pages to be referred
Even though this unit is connected to a PC and the memory card is inserted, the hard disk icon is not shown.	The driver software is not installed correctly.	Install the driver software again correctly.	15
	The memory card is not inserted correctly.	Take out the memory card and insert it again correctly.	17
	The File Exchange is not installed.	To use the DOS/Windows format memory card, the File Exchange control panel is necessary. Select Control Panels in the Apple menu and check whether or not File Exchange is installed. For details, refer to the Mac OS Help.	—
The POWER LAMP does not light.	The USB cable is not connected correctly.	Connect the USB plugs correctly again by checking the connector form and direction.	17
PC operation is not possible (the PC freezes).	The memory card is taken out before the hard disk icon is moved to the trash icon.	First move the hard disk icon on the desktop to the trash icon, then take out the memory card.	18
The warning window appears when you connect the USB cable to the USB port.	If you are using an iMac, the version of iMac firmware is not correct.	Please check to see if you have the latest version of Mac OS and the required iMac firmware update. Refer to Notes in FEATURES.	6
The memory card cannot be used with a digital camera, etc.	When you use this unit, the memory card is formatted by the PC.	Format the memory card again with the device in which the card will be used.	17

SPECIFICATIONS

- **Card slot:** SD Memory Card (MultiMediaCard) SmartMedia Card CompactFlash Card (with provided PCMCIA adapter)
- **USB Interface:** Version 1.1 (up to 1.5 MB/sec.)
Hot-Swap
- DC +5 V directly from USB port
- **Operating temperature:** 0°C to 40°C/32°F to 104°F
- Available for Memory Stick by using PCMCIA adapter (not provided)

System requirements

IBM PC/AT

- Microsoft Windows 98/98SE/Me/2000 (preinstalled model)
- Intel Pentium processor or higher
- Free USB port
- CD-ROM drive

Macintosh

- iMac (iMac/DV/DV+/DV SE), iBook (iBook/SE)
- Power Mac G4 (G4 Cube), PowerBook, Power Mac G3 (with USB port)
- Mac OS 8.6 or later

- **Dimensions:** 92 mm (W) x 27 mm (H) x 126 mm (D) (3-5/8" x 1-1/16" x 4-31/32") (including feet and PC Card Eject button)
- **Weight:** 143 g (5 oz) (without USB cable)

Notes

- Cannot be used to read copy-protected audio data.
- Compatible with preinstalled OS only.
- iMac firmware update version 3.0 or later is required. Please make sure that you have the correct version of iMac firmware.
- JVC accepts no liability for any damages or data loss that may arise from operating this unit.

This file has been downloaded from: www.UsersManualGuide.com

User Manual and User Guide for many equipment's like mobile phones, photo cameras, mother board, monitors, software, tv, DVD, and others.. Manual users, user manuals, user guide manual, owners manual, instruction manual, manual owner, manual owner's, manual guide, manual operation, operating manual, user's manual, operating instructions, manual operators, manual operator, manual product, documentation manual, user maintenance, brochure, user reference, pdf manual



Printed in TAIWAN R.O.C

J5500-106A

© 2001 VICTOR COMPANY OF JAPAN, LTD.

Downloaded from: <https://www.usersmanualguide.com>

Documents / Resources

	<p>JVC HC-CW1F Card Reader Writer [pdf] Instructions HC-CW1FJ, J5500-106A, HC-CW1F, HC-CW1F Card Reader Writer, Card Reader Writer, Reader Writer, Writer</p>
---	--

References

-  [User Manual, users guide, operation instruction](#)
-  [User Manual, users guide, operation instruction](#)