

**Contents** [ [hide](#) ]

[1 Jura X10c \(A\) Automatic Coffee Machine](#)

[2 Specifications](#)

[3 Product Usage Instructions](#)

[4 FAQs](#)

[5 Documents / Resources](#)

[5.1 References](#)



## Jura X10c (A) Automatic Coffee Machine



## Specifications

- Product Name: Milk System Cleaner Mini Tabs

- Article Number: 24211
- Original bottle with dispensing system for 60 cleaning cycles

## **Product Usage Instructions**

### **Cleaning the Milk System:**

1. Ensure you have read and understood the safety information and warnings provided in the Instructions for Use.
2. Obtain the Milk System Cleaner Mini Tabs with Article No: 24211.
3. Follow the steps below to clean the milk system:
  - Start by preparing the cleaning solution.
  - Refer to the manufacturer's guidelines for the correct dosage of the cleaner.
  - Follow the specific instructions on how to run the cleaning cycle for your particular machine model.
  - Repeat the cleaning process as recommended by the manufacturer or whenever necessary.

### **Technical documentation**

#### **Requirements for installation location**

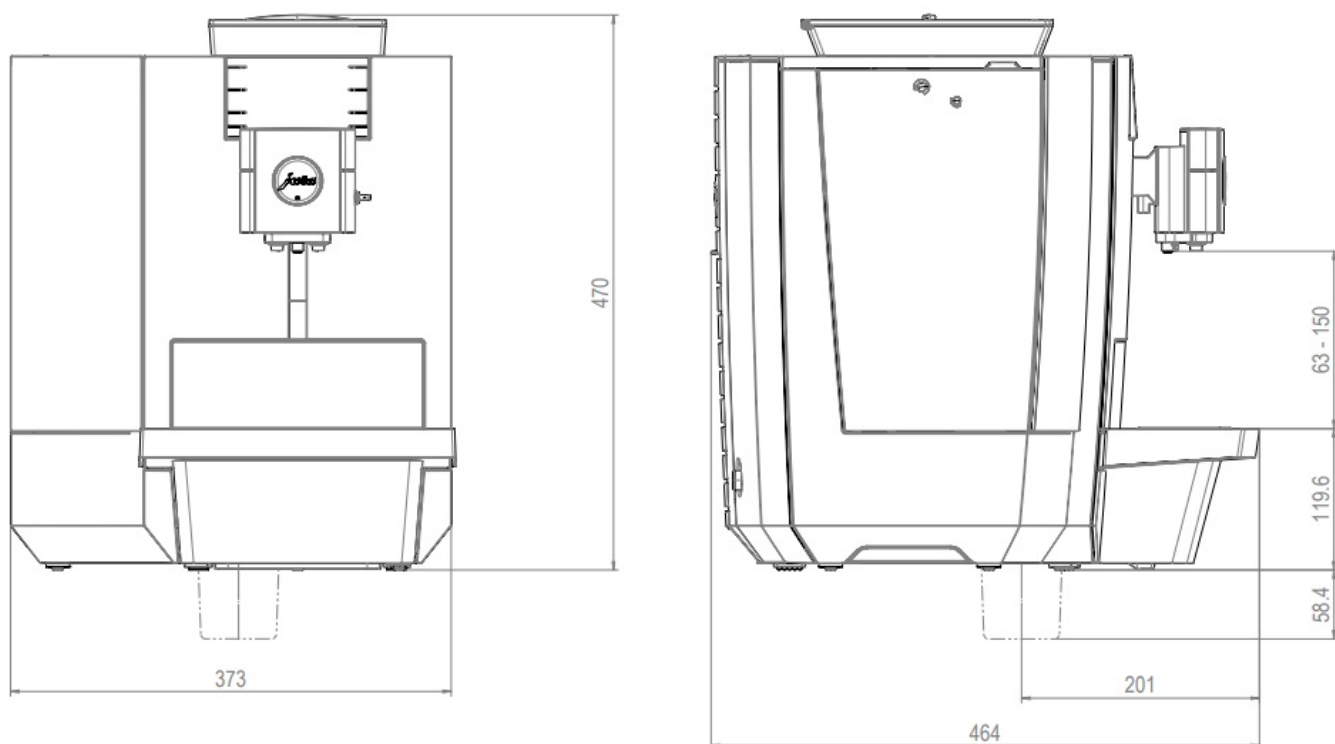
Z Horizontal surface that is not sensitive to water Z Ambient conditions:

- Air humidity max. 80%
- Ambient temperature 10–35°C

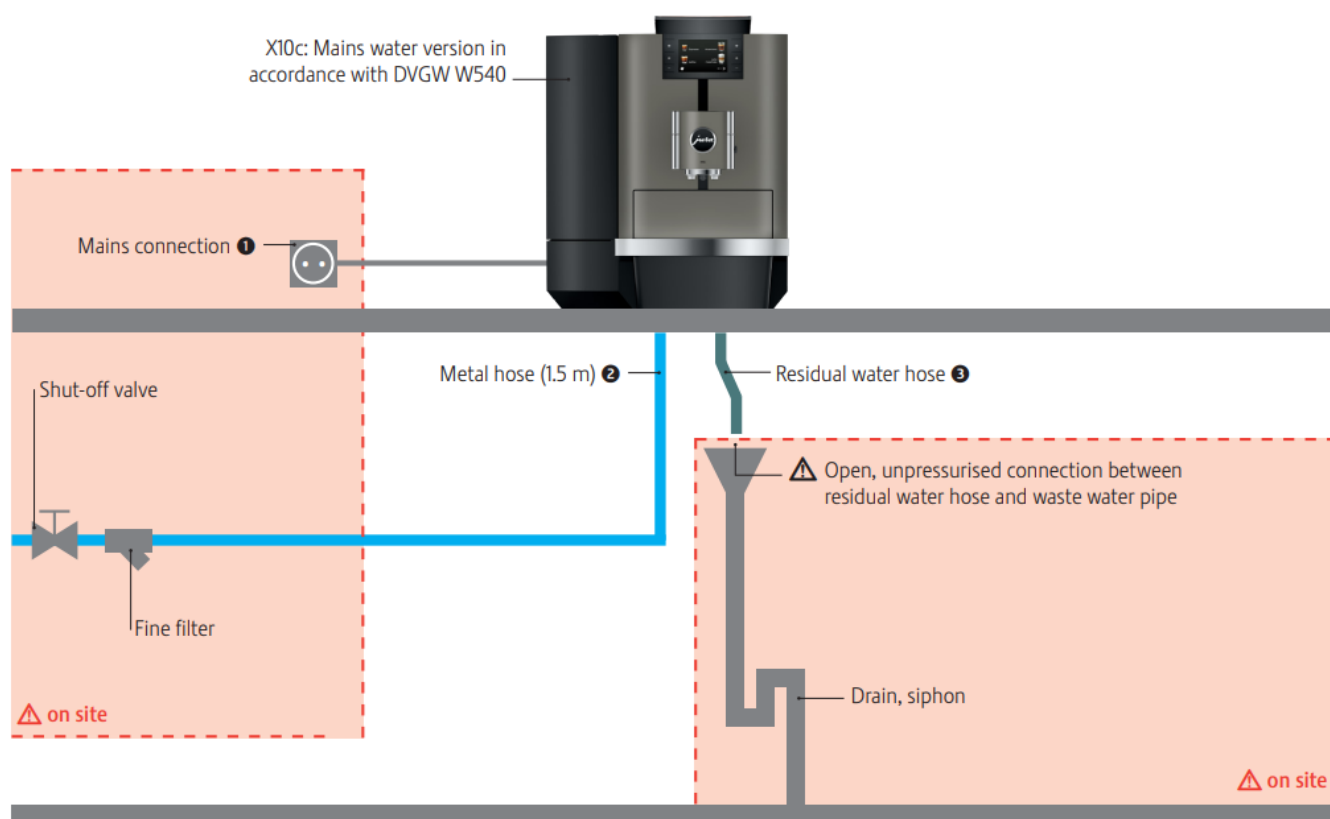
The required connections at the customer's premises must be carried out by an approved, qualified person before the JURA service technician can set up the machine at your chosen location.

- Please make sure that the building connections are as close as possible to the location of the machine (refer to the length of connection pipes).
- Always note the information in the instructions for use for your coffee machine (Chapter "Setting up the machine").

### **Dimensions**



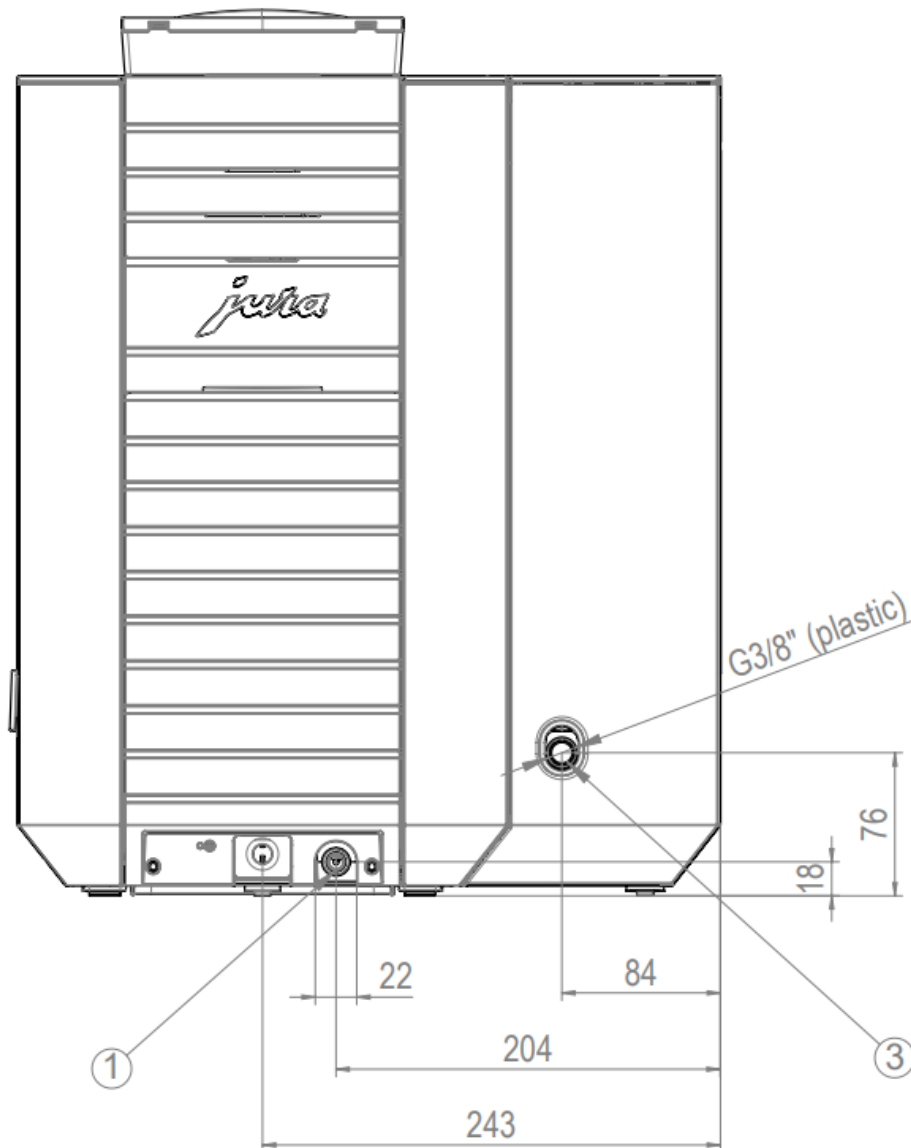
## Overview: On-site requirements and installation instructions



You can find an installation guideline for the permanent water connection on our website.

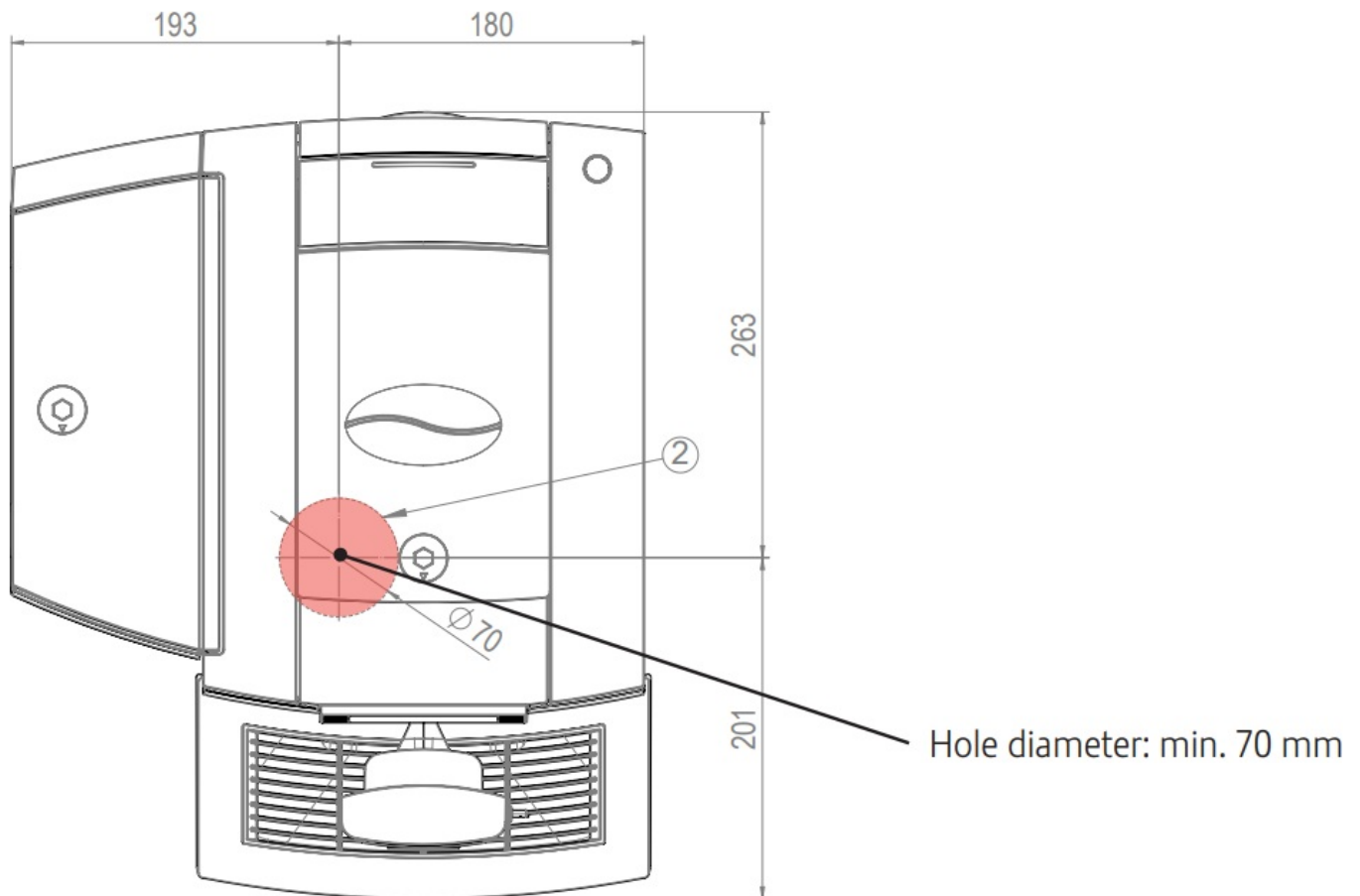


## Back of the machine



- 1 Position of the drain hose
- 3 Position of permanent water connection

## Position of the hole in the work surface for coffee grounds disposal



- 2. Position of the tube section for coffee grounds disposal

## Cleaning the milk system

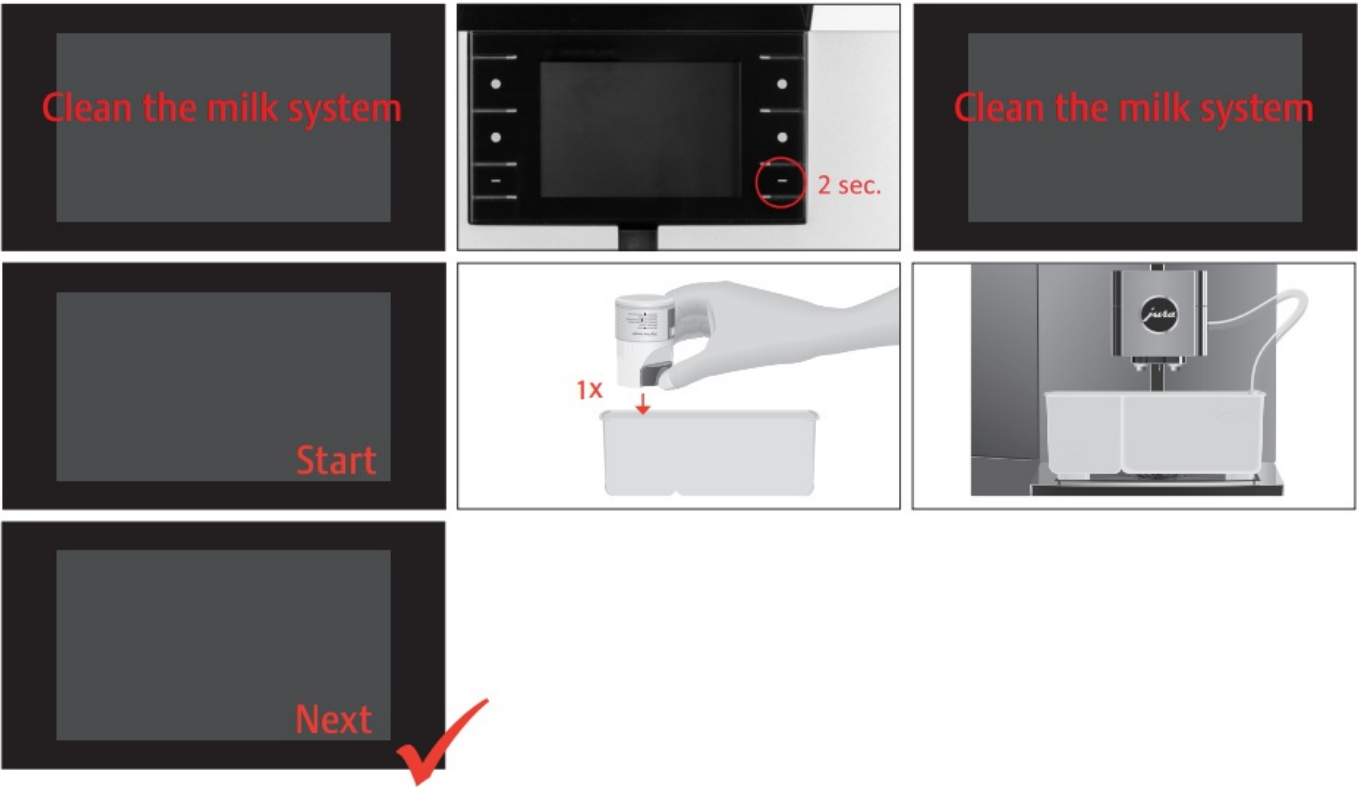


### Milk system cleaner mini tabs

- Original bottle with dispensing system for 60 cleaning cycles
- Article No: 24211

## CAUTION

- These short instructions do not replace the Instructions for Use. Make sure you read and observe the safety information and warnings first to avoid hazards.



FAQs

**Q: How often should I clean the milk system using the Milk System Cleaner Mini Tabs?**

**A:** It is recommended to clean the milk system using the provided Mini Tabs after every 60 cycles or as instructed by the manufacturer.

Documents / Resources

	<p><a href="#">jura X10c (A) Automatic Coffee Machine [pdf]</a> Installation Guide</p> <p>X10c A, 202501, X10c A Automatic Coffee Machine, X10c A, Automatic C offee Machine, Coffee Machine, Machine</p>
--	---

References

- [User Manual](#)

# Leave a comment

Your email address will not be published. Required fields are marked \*

Comment \*

Name

Email

Website

☐ Save my name, email, and website in this browser for the next time I comment.

**Post Comment**

**Search:**

e.g. whirlpool wrf535swhz

**Search**

[Manuals+](#) | [Upload](#) | [Deep Search](#) | [Privacy Policy](#) | [@manuals.plus](#) | [YouTube](#)

This website is an independent publication and is neither affiliated with nor endorsed by any of the trademark owners. The "Bluetooth®" word mark and logos are registered trademarks owned by Bluetooth SIG, Inc. The "Wi-Fi®" word mark and logos are registered trademarks owned by the Wi-Fi Alliance. Any use of these marks on this website does not imply any affiliation with or endorsement.