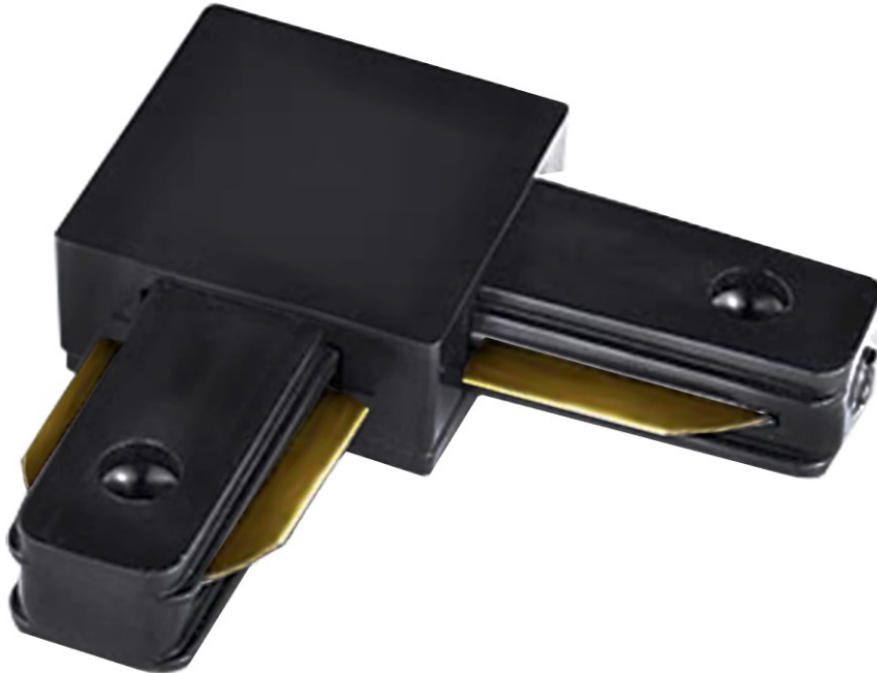




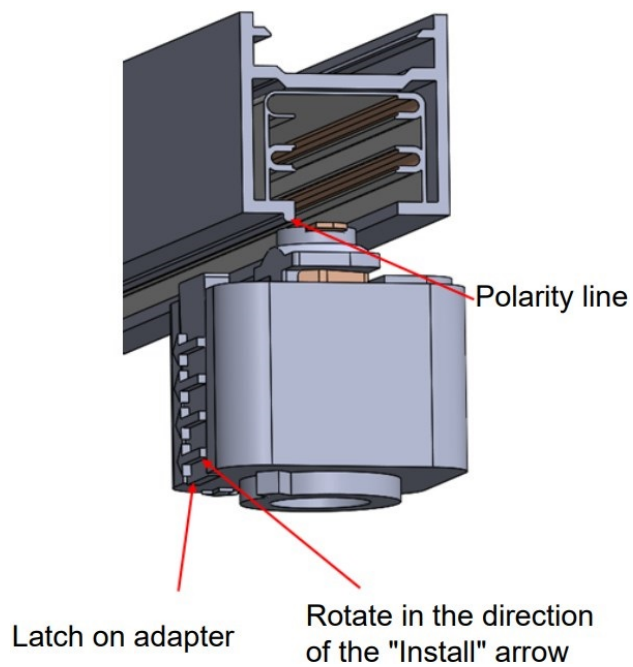
## JUNO L-Type Track Adapter Option Instruction Manual

[Home](#) » [Juno](#) » JUNO L-Type Track Adapter Option Instruction Manual 

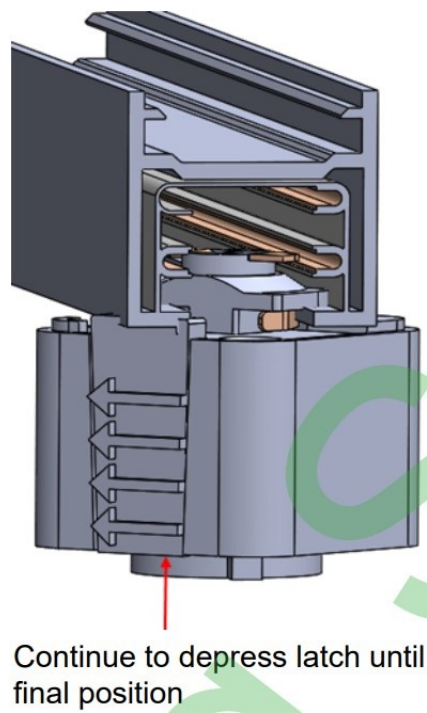
### JUNO L-Type Track Adapter Option Instruction Manual

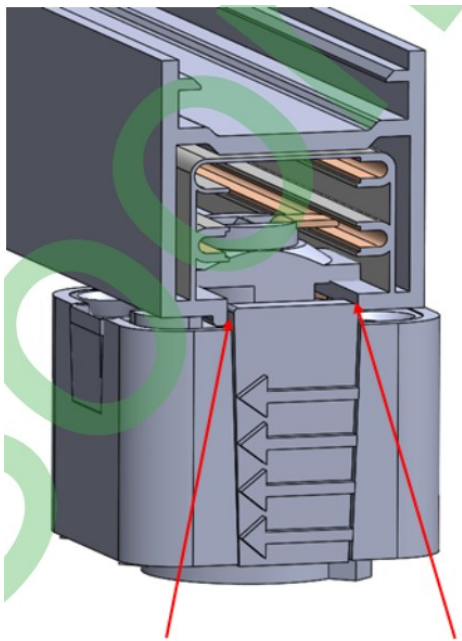


Find the latch and the polarity line. Align parts as shown below and insert the adapter box into the track.



Continue to rotate until the latch snaps in place between the two track rails.





Latch snaps into place between rails

#### Contents

[1 Second Circuit Positioning](#)

[2 Documents / Resources](#)

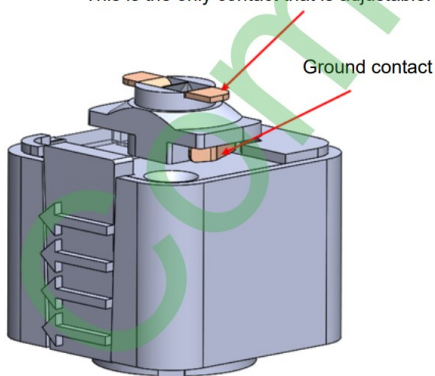
[2.1 References](#)

[3 Related Posts](#)

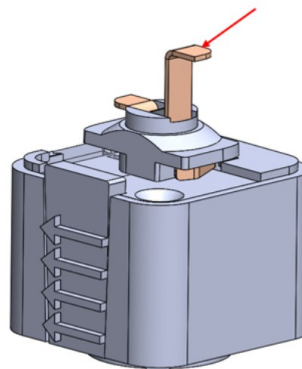
## Second Circuit Positioning

1. Hold onto Adapter Box with one hand
2. Place the end of a flat head screw driver under the contact shown below
3. Gently pull up, the contact should move vertically until hitting a hard stop
4. Follow instructions for inserting into track

Find contact above the ground contact.  
This is the only contact that is adjustable.



Final Position



1300 S. Wolf Road  
Des Plaines, IL 60018

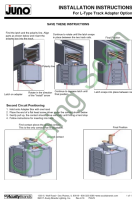
**800-323-5068**

[www.acuitybrands.com](http://www.acuitybrands.com)

©2017 Acuity Brands Lighting, Inc.



## Documents / Resources

 The thumbnail shows the cover of the instruction manual. It features the Juno logo at the top left, followed by the title "INSTALLATION INSTRUCTIONS" and "For L-Type Track Adapter Option". Below the title are several small diagrams illustrating the installation process for the track adapter.	<p><a href="#">JUNO L-Type Track Adapter Option</a> [pdf] Instruction Manual L-Type Track Adapter Option, L-Type, Track Adapter Option, Adapter Option</p>
--	--

## References

-  [Acuity Brands | Lighting, Controls, and Building Management Solutions](#)