



**BLDLS L-Shape
Workstation with
Storage**



Juniper BLDLS L-Shape Workstation with Storage Installation Guide

[Home](#) » [JUNIPer](#) » Juniper BLDLS L-Shape Workstation with Storage Installation Guide 

Contents

- [1 Juniper BLDLS L-Shape Workstation with Storage](#)
- [2 Product Usage Instructions](#)
- [3 FAQ](#)
- [4 Low Open-Shelf Lateral](#)
- [5 Screw Cam Pins into Bottom Panel](#)
- [6 Low Box/File Lateral](#)
- [7 Secure Feet to Storage and Flip](#)
- [8 MERGING TOP](#)
- [9 L-SHAPE](#)
- [10 Install Support Bar](#)
- [11 CABLE TRAY](#)
- [12 MODESTY PANEL](#)
- [13 LAMINATE INSET END PANELS](#)
- [14 CONTACT](#)
- [15 Documents / Resources](#)
 - [15.1 References](#)



Juniper BLDLS L-Shape Workstation with Storage



Product Usage Instructions

- Ensure you have all the necessary parts listed in the manual.
- Screw cam pins into the bottom panel (6 cam pins required).
- Insert hardware into end panels using wooden dowels, cam locks, and cam pins.
- Insert hardware into the back panel using cam pins and cam locks.
- Insert cam locks into the fixed shelf (6 cam locks required).
- Secure the fixed shelf to the back panel by aligning cam pins and turning cam locks clockwise.
- Secure end panels and install a support bar under the surface if necessary.
- Secure the bottom panel by aligning cam pins and turning cam locks clockwise.
- Install the top panel if not merging storage by aligning cam pins and turning cam locks clockwise.
- Attach corner feet to the bottom panel using 4 wood screws per foot.
- Secure feet to storage by flipping it over and attaching a foot to each corner using 4 wood screws.
- Attach handles to the front of drawers using 2 bolts each.

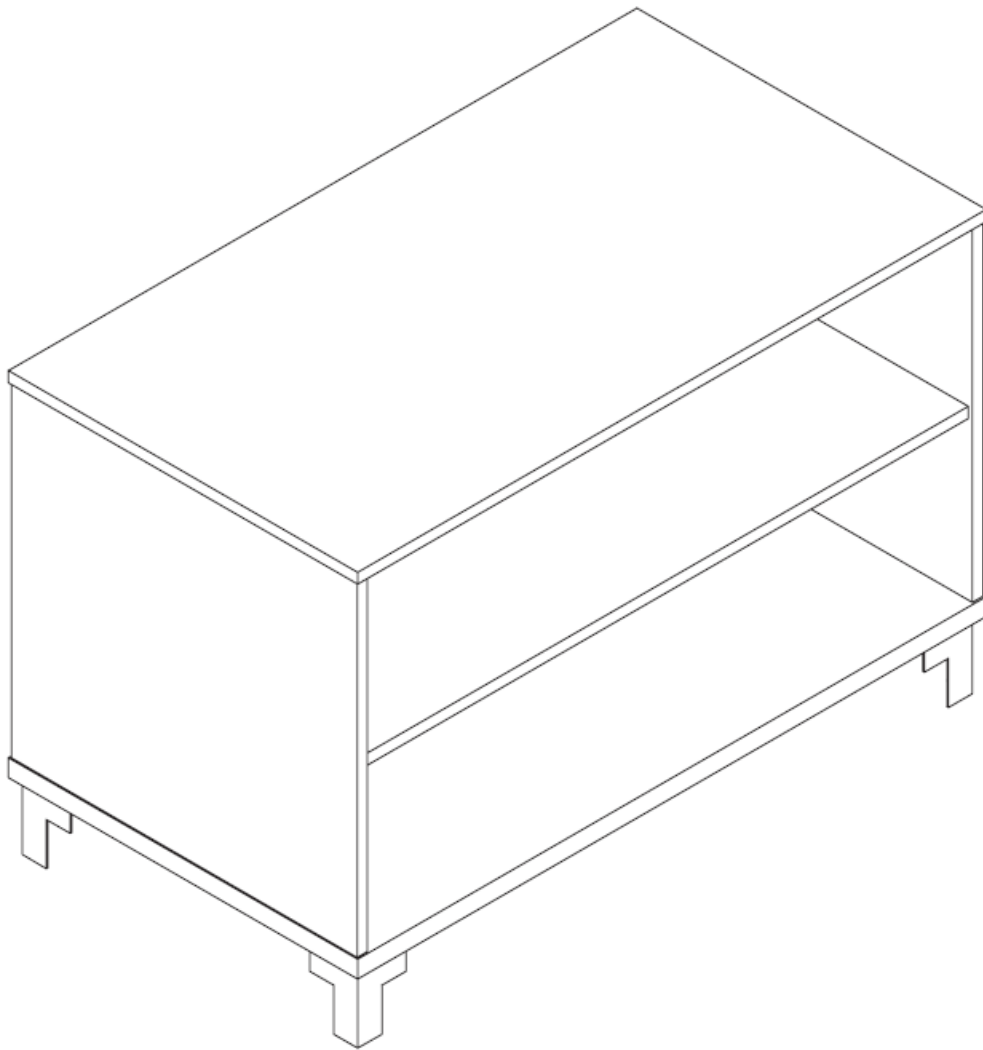
FAQ

- **Q:** What should I do if I am missing parts for the installation?
- **A:** Contact customer support to request the missing parts for your assembly.
- **Q:** Can I install the product without professional help?
- **A:** The product can be assembled following the provided instructions, but professional help is recommended for complex installations.







Low Open-Shelf Lateral

Overview

- Acuity Desk All parts listed are for a single low open-shelf lateral; additional parts will be needed for additional low open-shelf laterals.



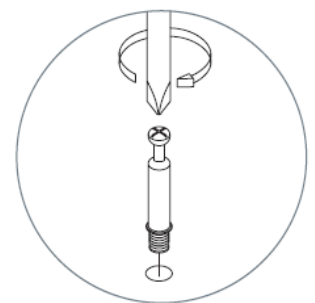
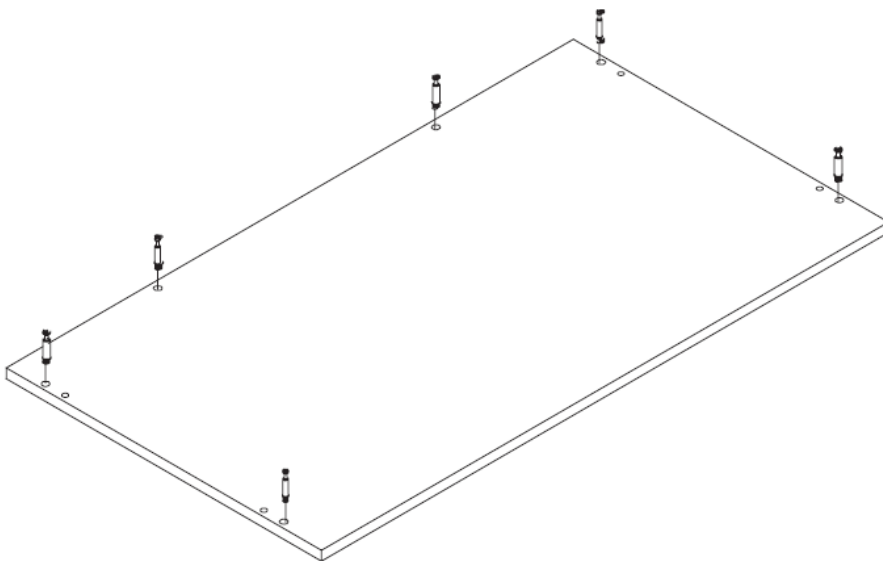
Parts List

Code	Qty.	Description	
BLLOSV2	1	Top Panel*	
	1	Bottom Panel	
	1	Fixed Shelf Panel	
	2	End Panels	
	1	Back Panel	
	4	Corner Feet	

- If installing a merging topper, disregard top panel item.

Screw Cam Pins into Bottom Panel

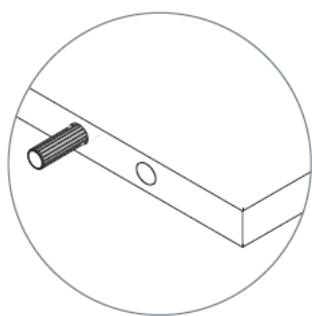
- Requires 6 cam pins.



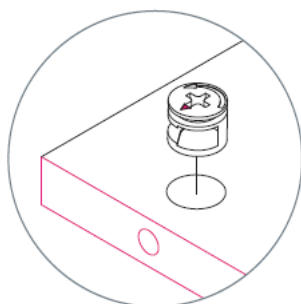
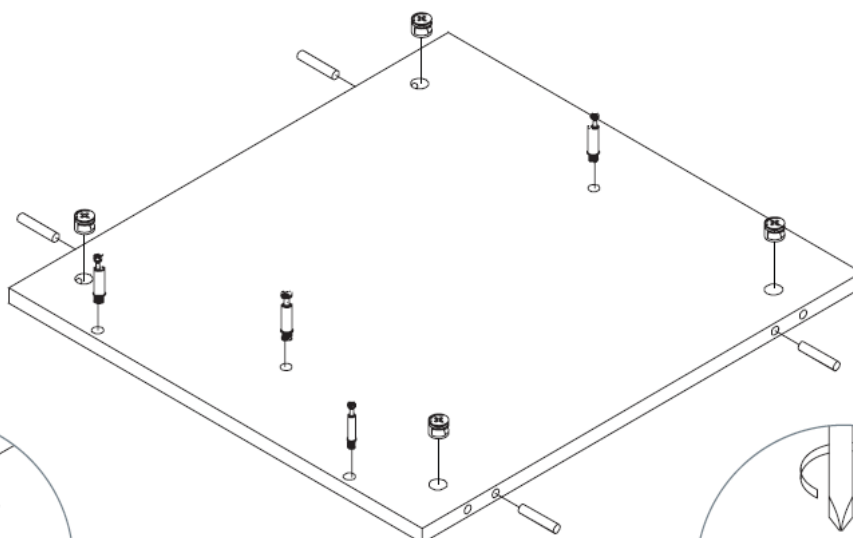
Cam Pin

Insert Hardware into End Panels

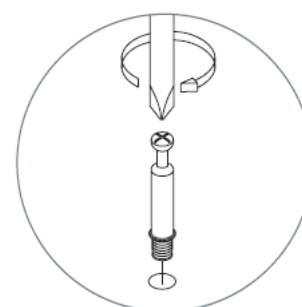
- Requires 4 wooden dowels, 4 cam locks, and 4 cam pins.



Wooden Dowel



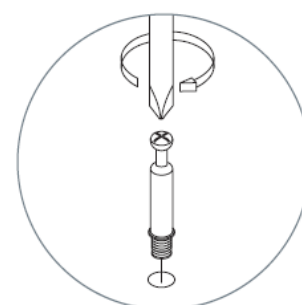
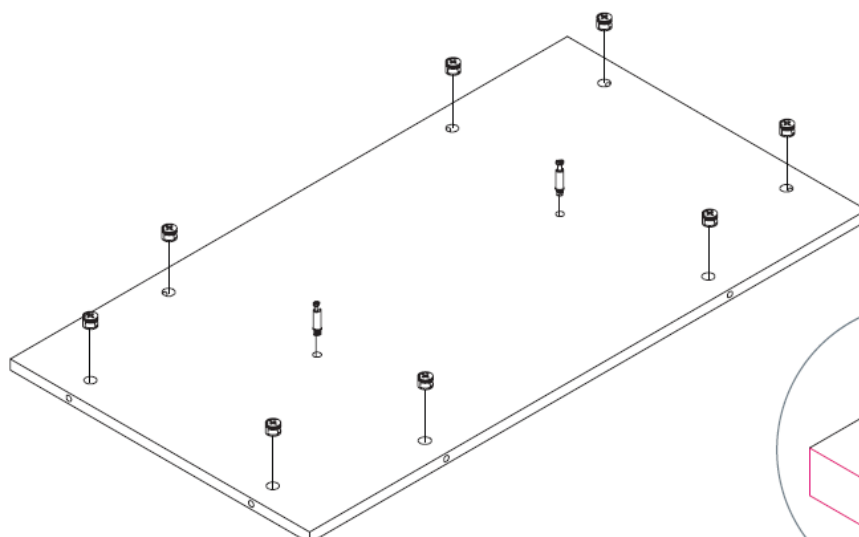
Cam Lock



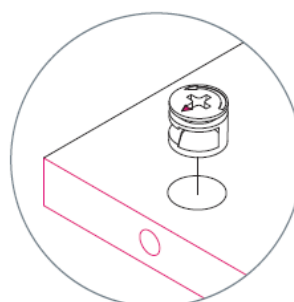
Cam Pin

Insert Hardware into Back Panel

- Requires 2 cam pins and 8 cam locks.



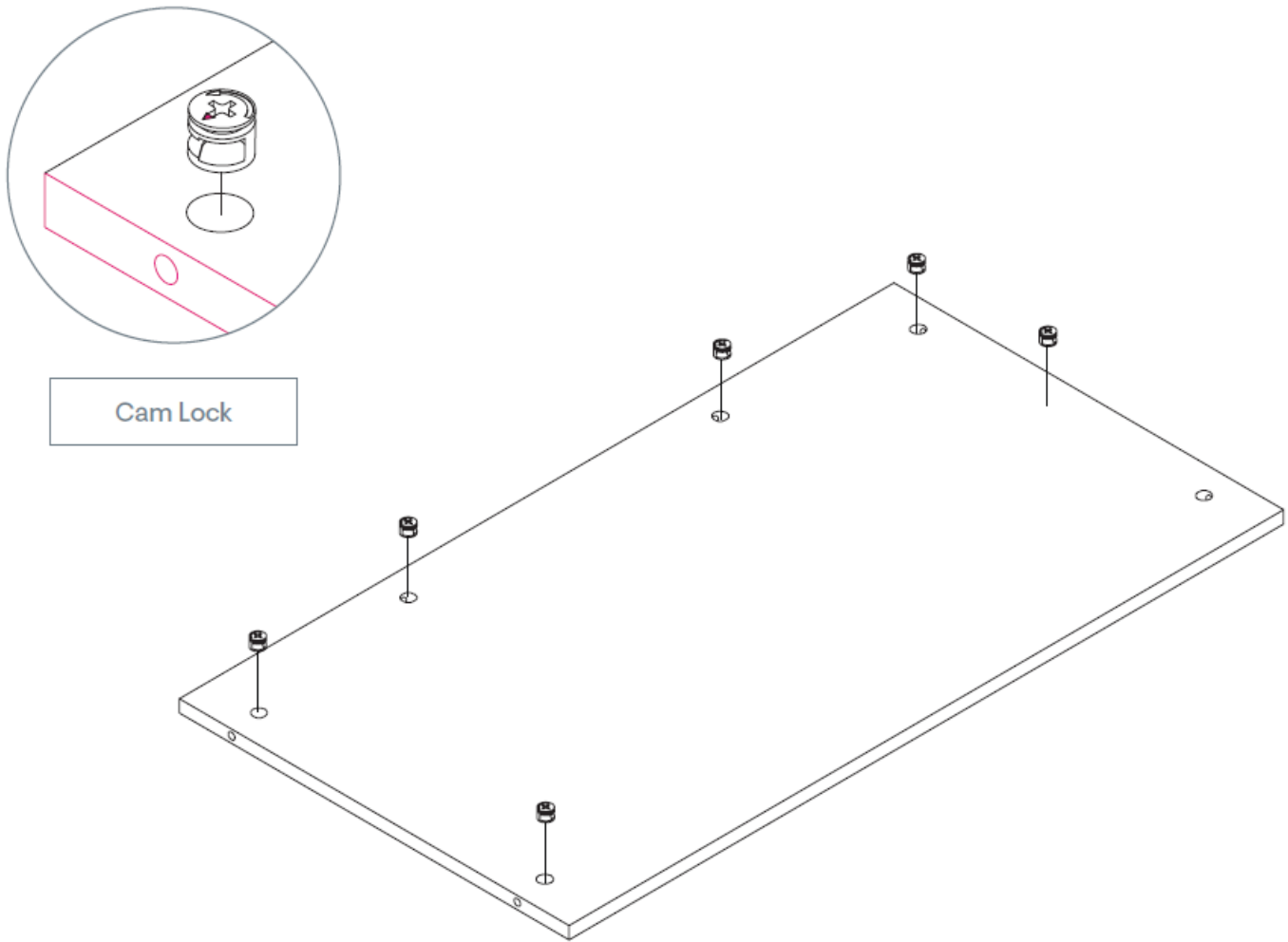
Cam Pin



Cam Lock

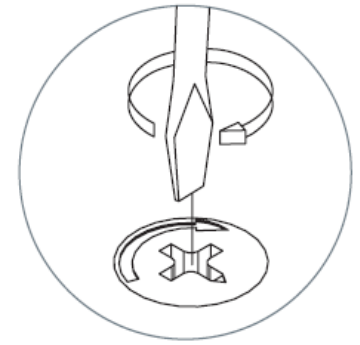
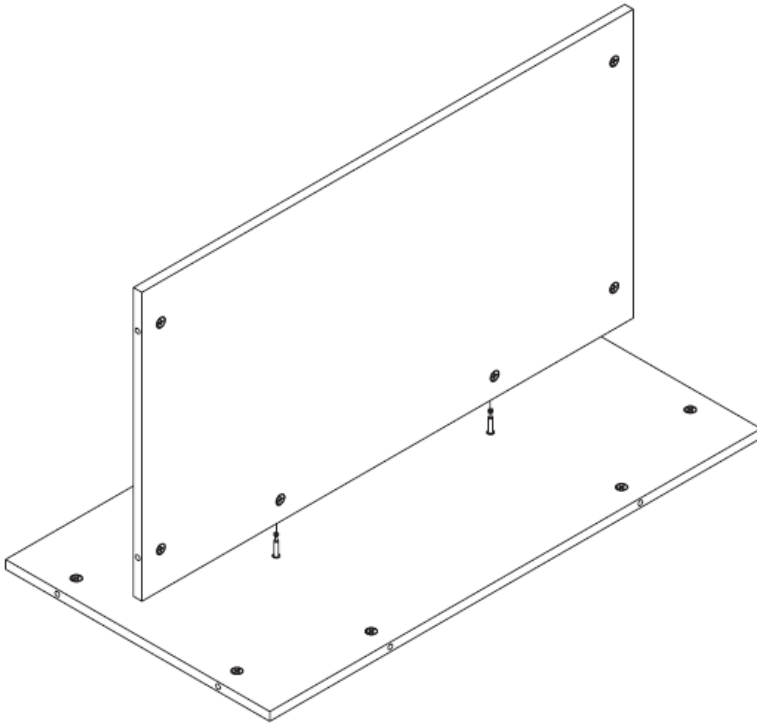
Insert Cam Locks into Fixed Shelf

- Requires 6 cam locks.



Secure Fixed Shelf to Back Panel

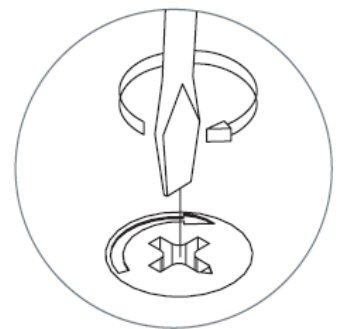
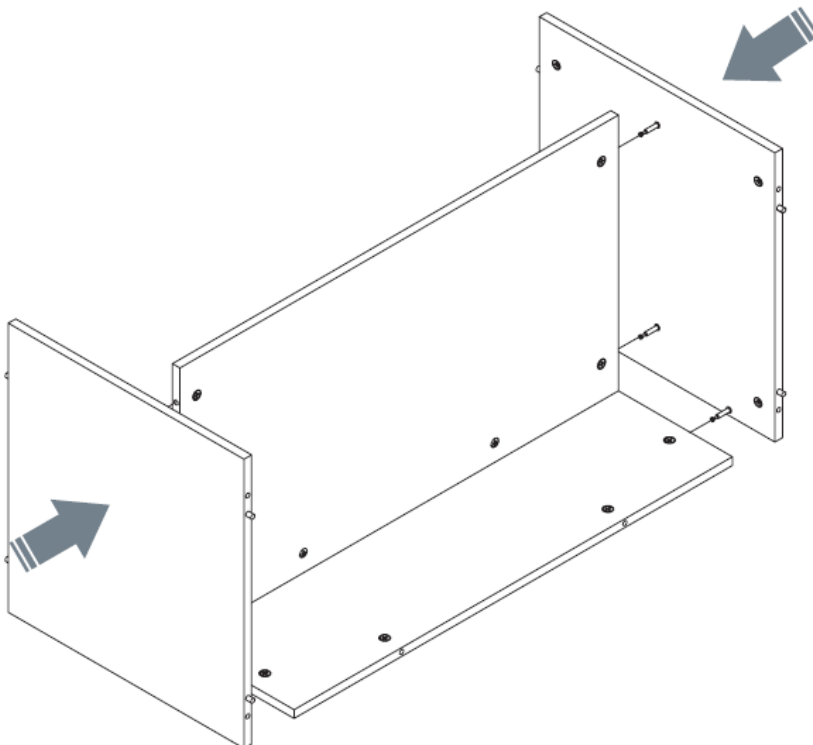
- Align cam pins so they sit inside of open cam locks. Use a screwdriver to turn cam locks clockwise and lock into place.



Tighten Cams

Secure End Panels

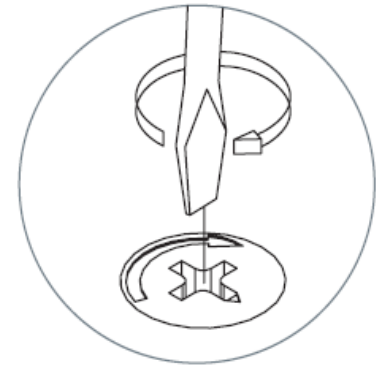
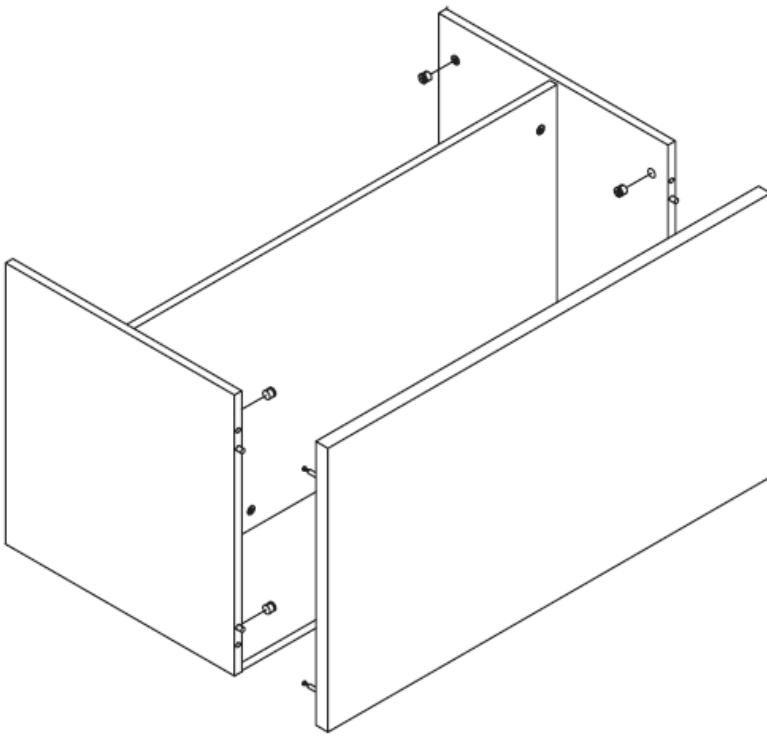
- If working with a surface 72" or longer, use 10 wood screws to install a support bar under the surface.



Tighten Cams

Secure Bottom Panel

- Align cam pins so they sit inside of open cam locks. Use a screwdriver to turn cam locks clockwise and lock into place.

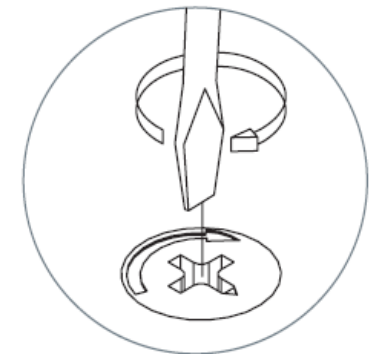
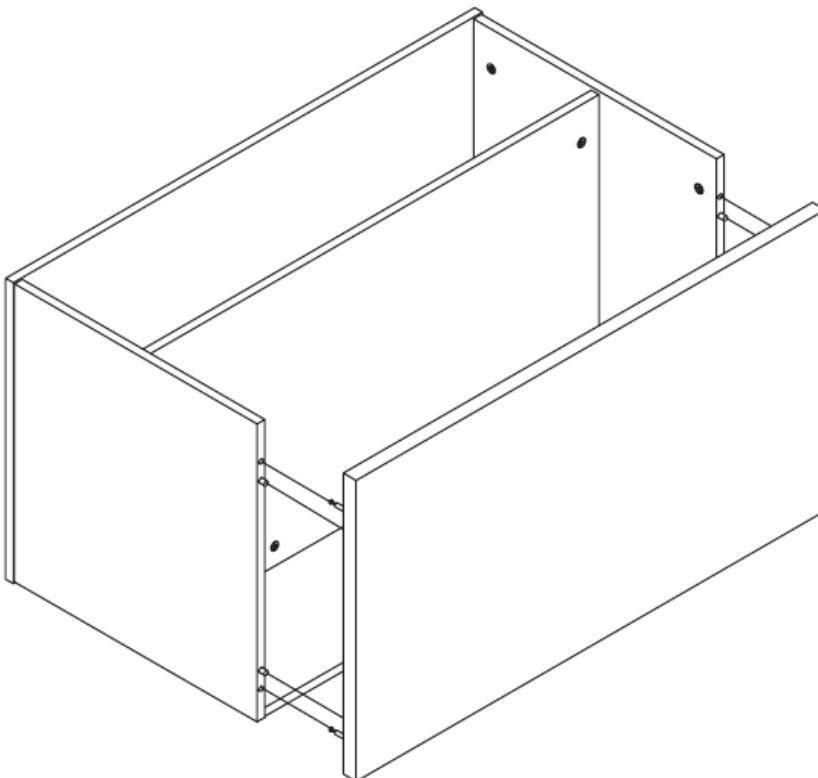


Tighten Cams

Secure Top Panel

Note: DO NOT Install the top panel if you are merging storage.

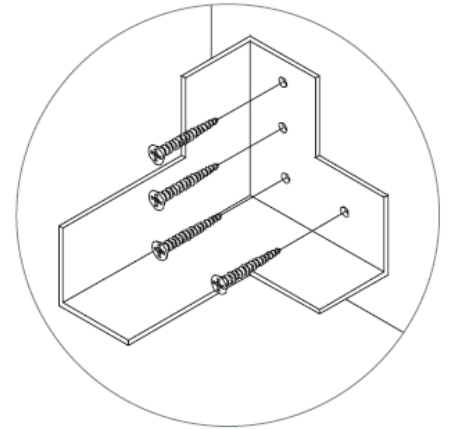
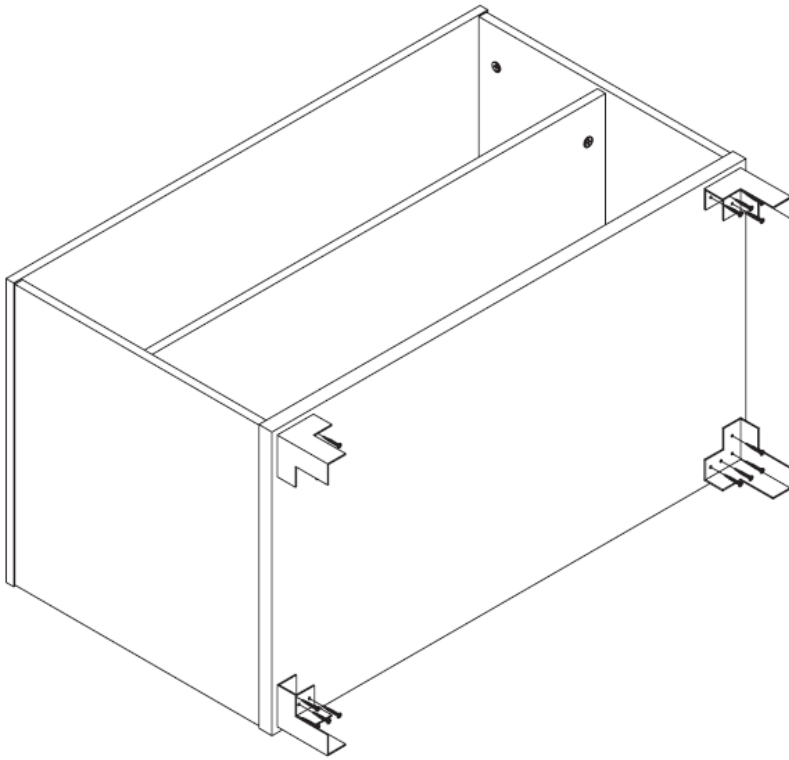
- Align cam pins so that they sit inside of open cam locks. Use a screwdriver to turn the cam locks clockwise and lock into place.



Tighten Cams

Secure Feet to the Bottom Panel

- Attach corner feet to the bottom panel with 4 wood screws per foot.



Low Box/File Lateral

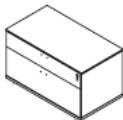

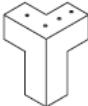
Overview

Acuity Desk

- All parts listed are for a single low box/file lateral; additional parts will be needed for additional low box/file laterals.

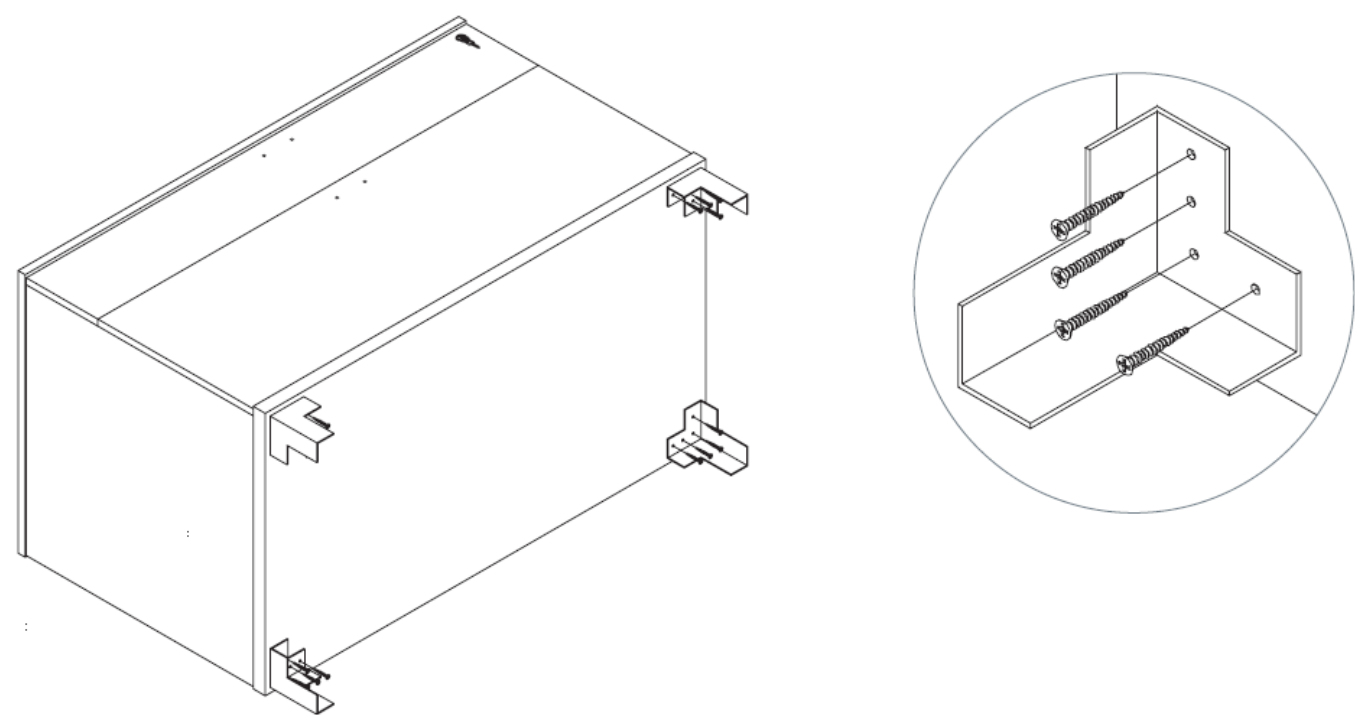


Parts List

Code	Qty.	Description	
BLLBFV2	1	Low Box/File Lateral	
	2	Handles	
	4	Corner Feet	

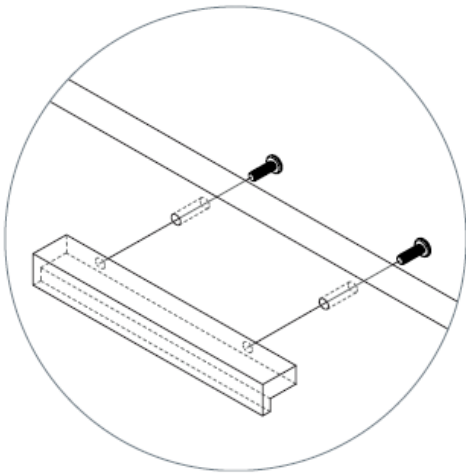
Secure Feet to Storage and Flip

- Flip the storage piece so it is laying on its back; secure the foot to each corner using 4 wooden screws.



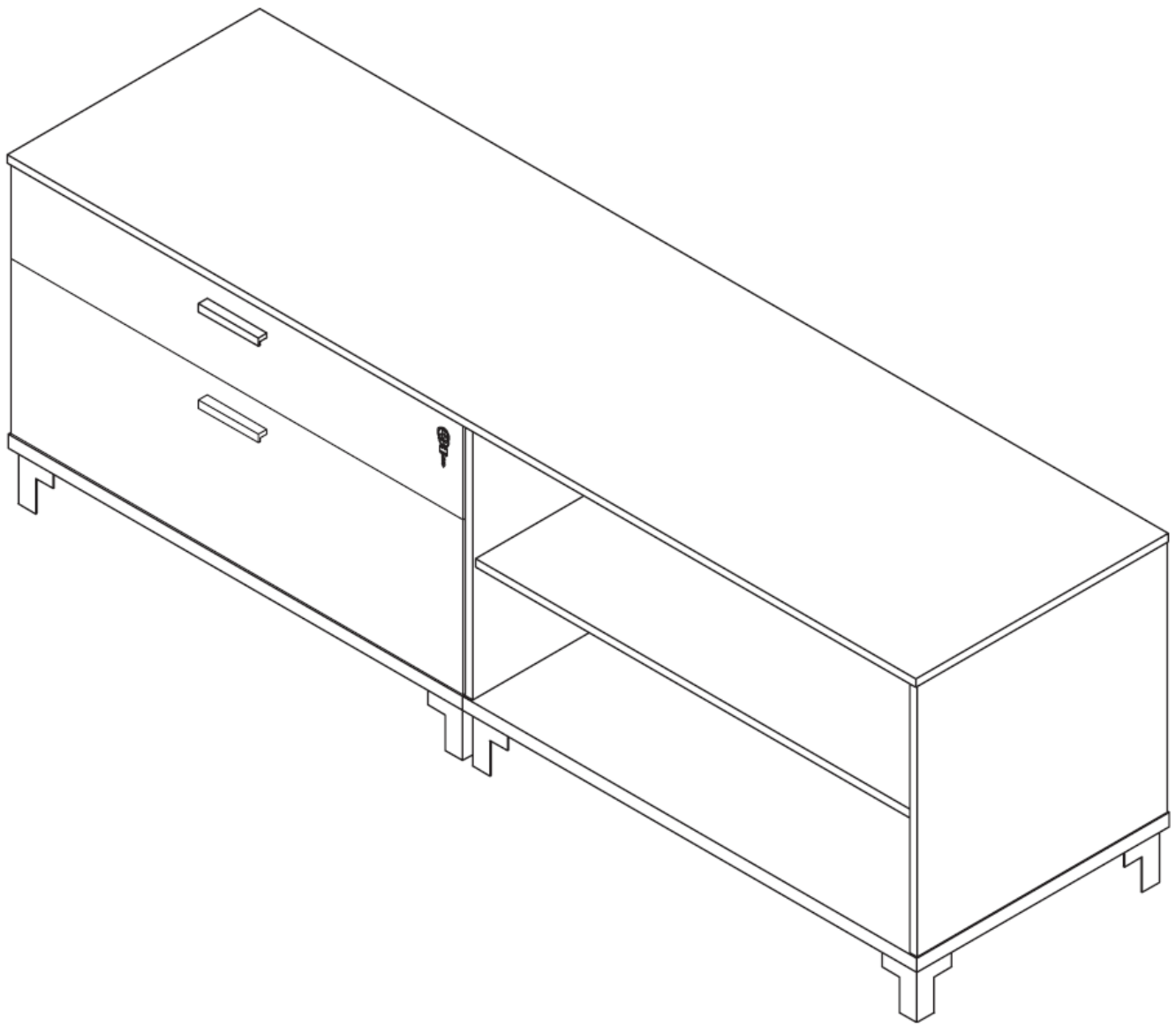
Attach Handles

- Using 2 bolts each, attach handles to front of drawers.








Merging Top Overview

- Acuity Desk All parts listed are for a single merging top; additional parts will be needed for additional merging tops.

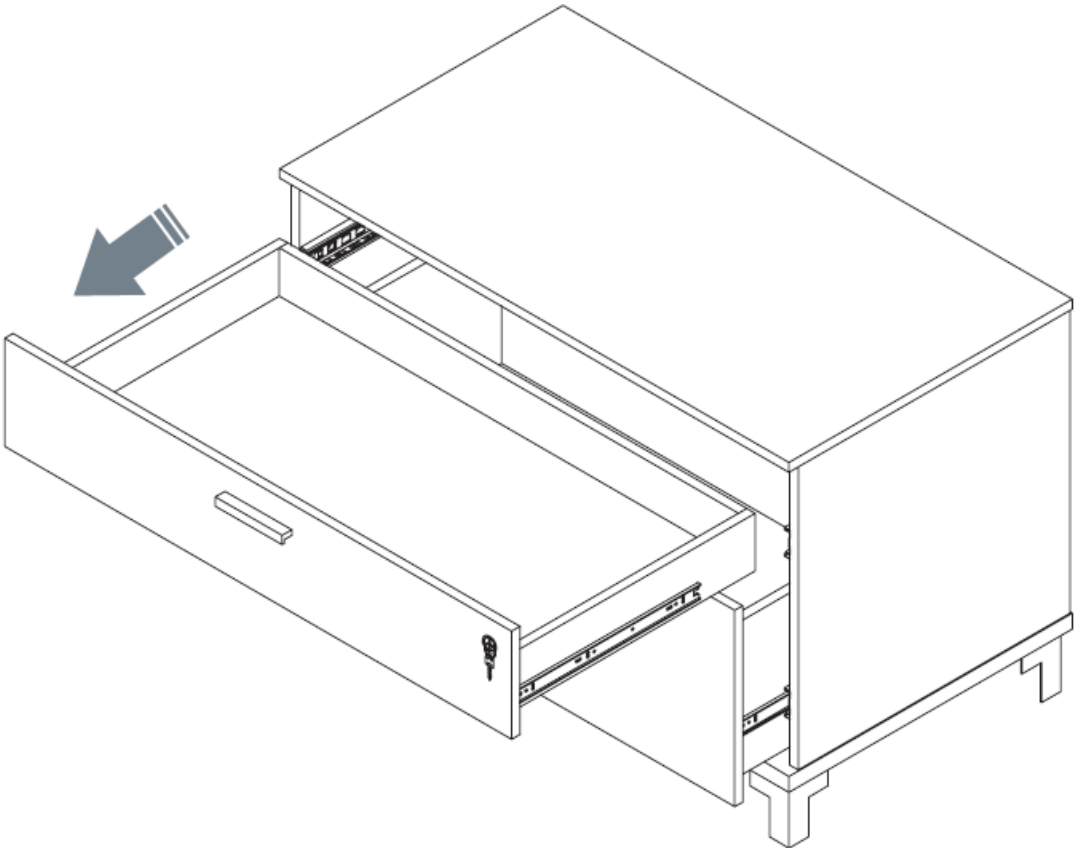


Parts List

Code	Qty.	Description	
BLLBFV2	1	Low Box/File Lateral	
BLLOSV2	1	Low Open-Shelf Lateral	
GBLLT2	1	Laminate Merging Top	
PLB.1	12	Laminate Storage L-Bracket	
WD.2	24	Wood Screws	

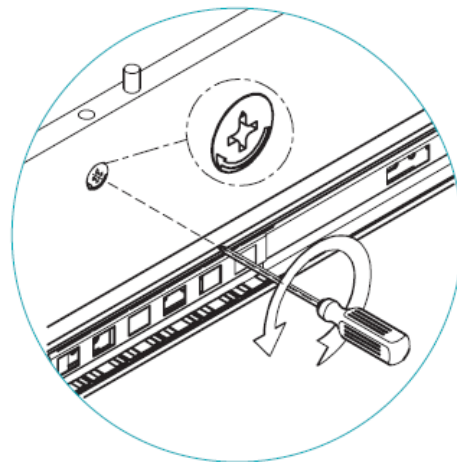
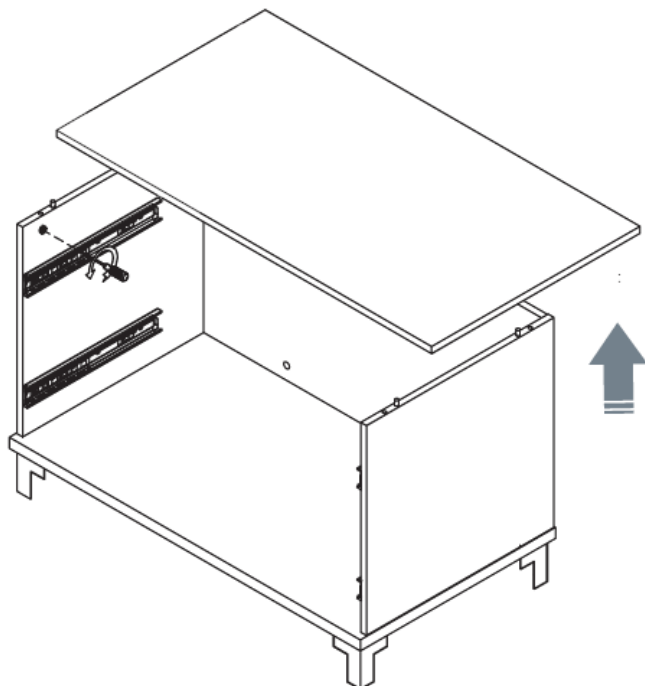
MERGING TOP

Remove Drawers from Low Box/File Lateral



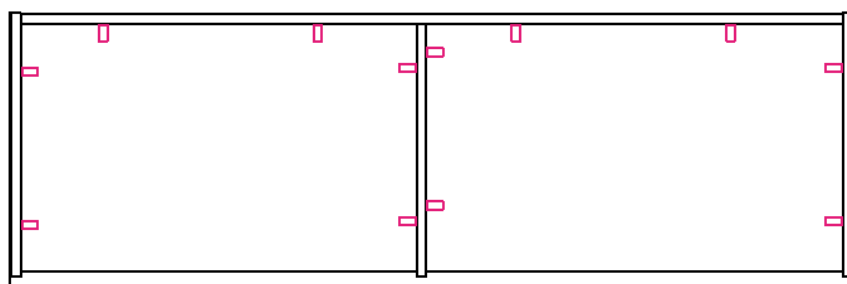
Remove Storage Top

- Locate 6 cam locks across the top edge on the inside of the storage piece. Then, use a screwdriver to turn the cam locks counterclockwise to unlock. Carefully lift the top from storage.

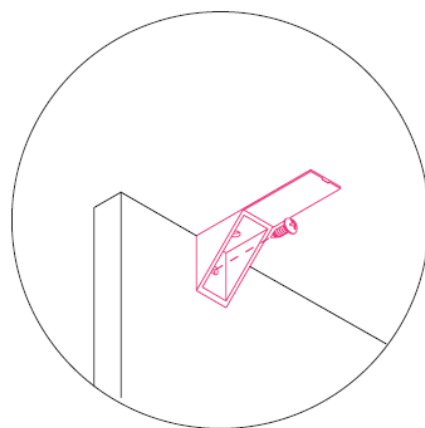


Connect Brackets to Top Panel

- Attach 12 laminate storage L-brackets to the inside of the storage using wood screws in the places shown below.

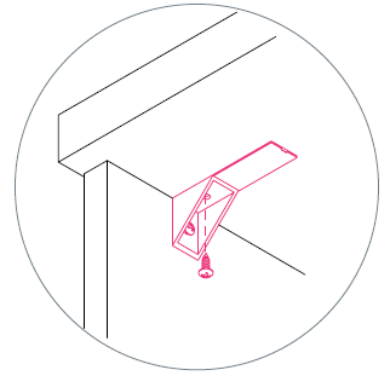
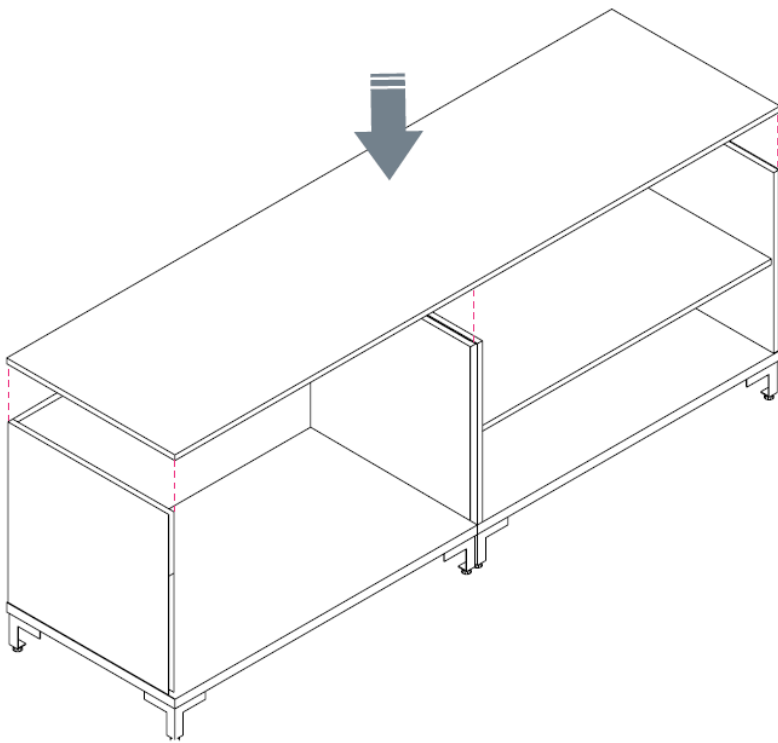


Top View

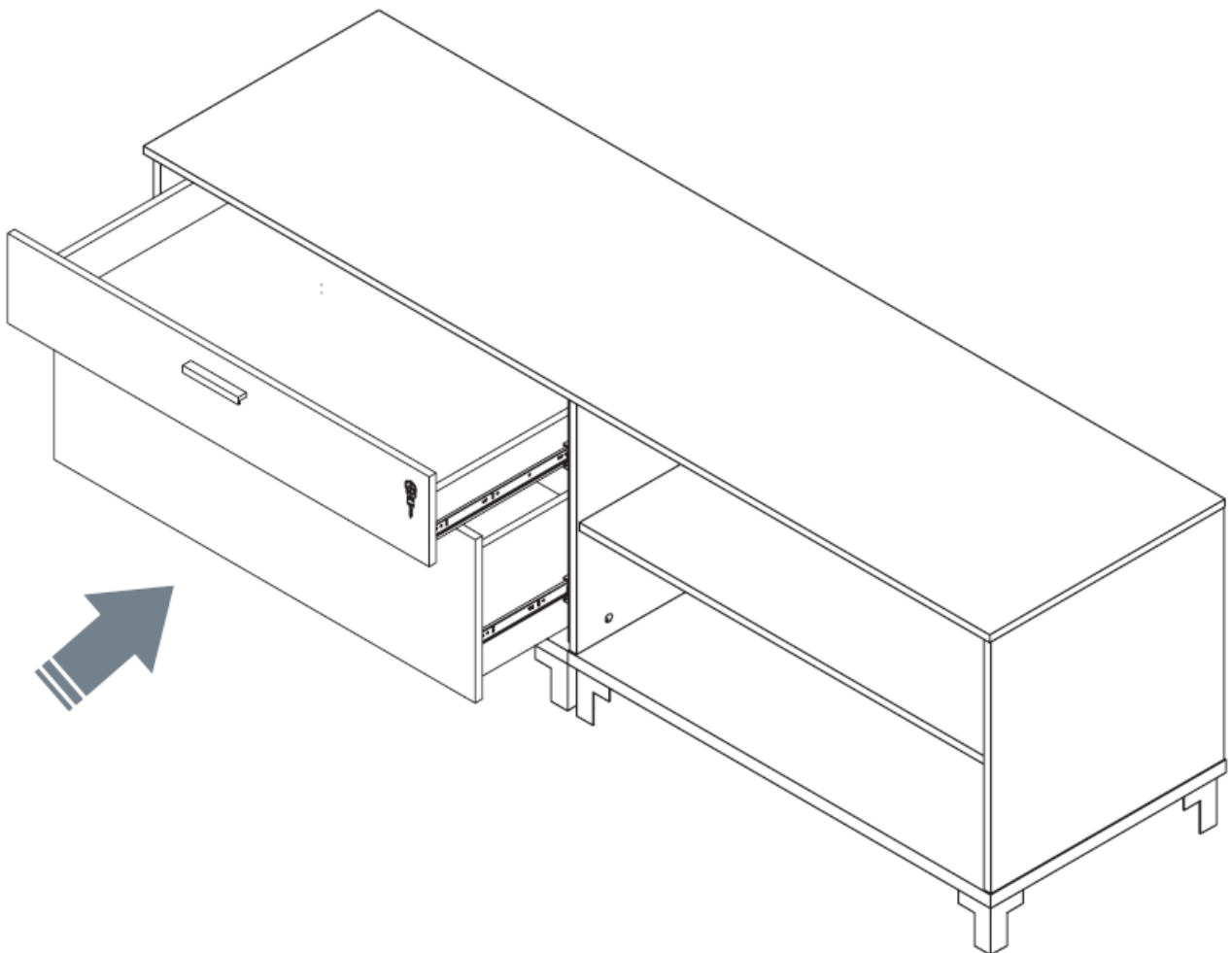


Attach Top to Storage

- Set storage side-by-side then align the top panel so it is flush with the sides, back, and front of storage. Secure 12 laminate storage L-brackets to top panel using wood screws.

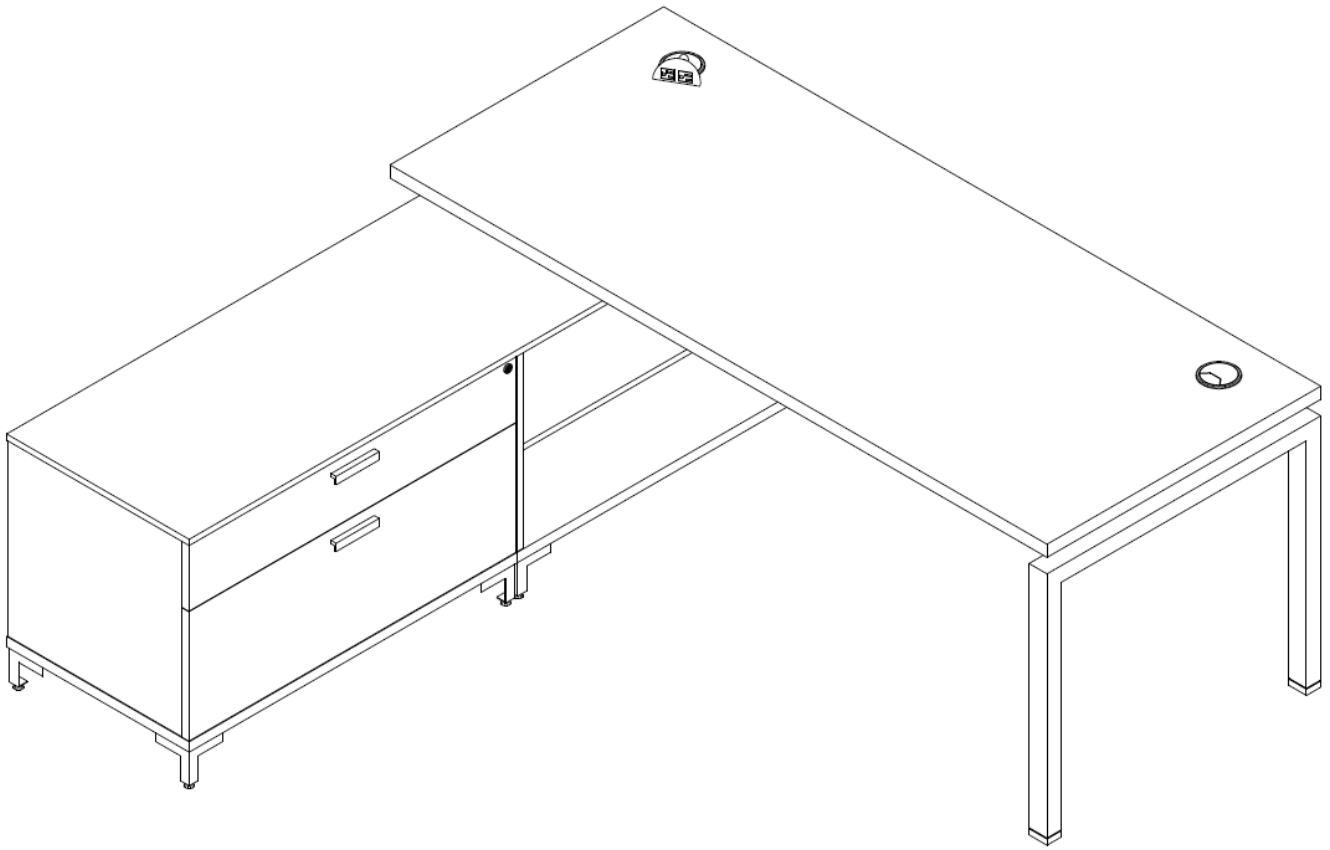


Insert Drawers



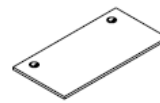




L-Shape with Storage Overview

- Acuity Desk All parts listed are for a single L-shape; additional parts will be needed for additional L-shape configuration.



Parts List

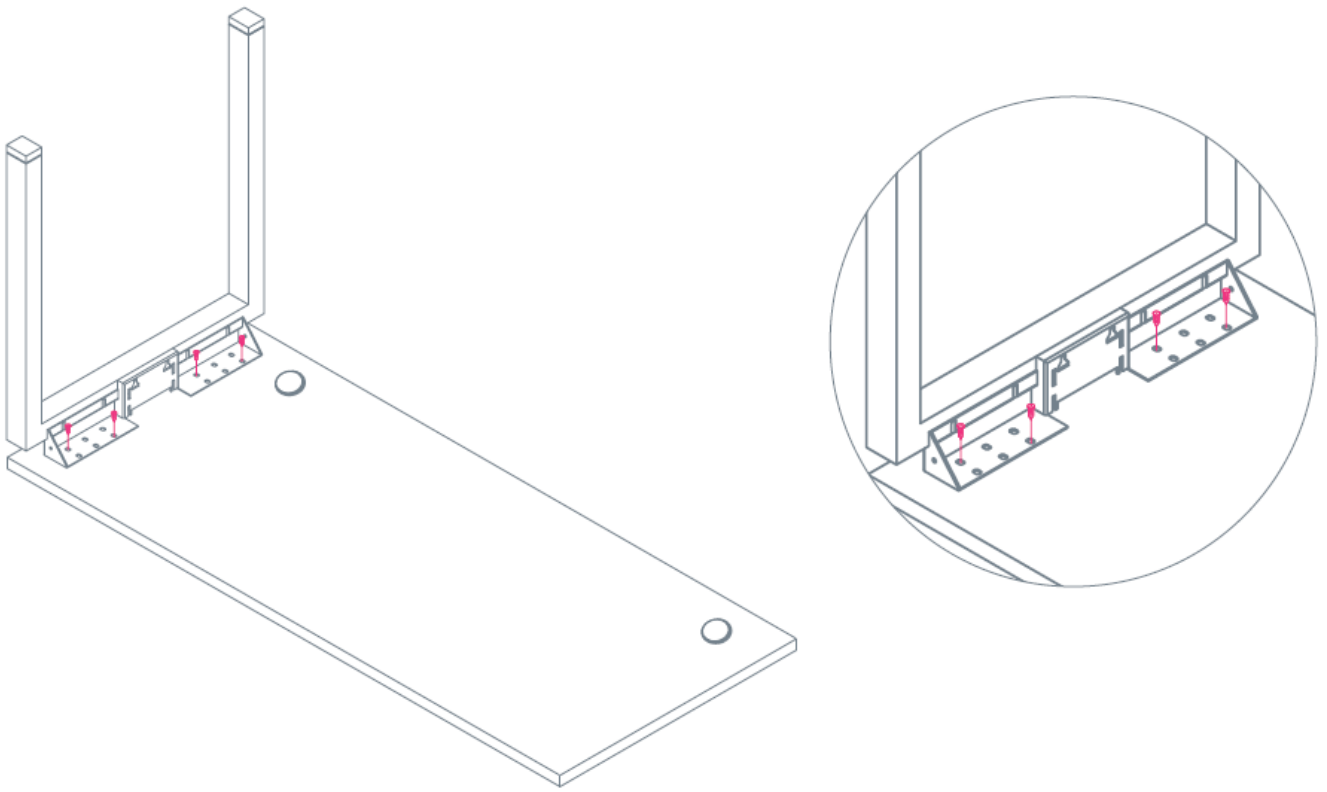
Code	Qty.	Description	
BL24 or BL30	1	BLADE Leg	
GCNAB	1	THREE60 Sleigh Leg*	
BASB72	1	Support Bar*	
GB3072	1	Laminate Surface	
BLSS	2	Surface Stand Kit (set of 2)	
	1	Merged Laminate Storage	

- The single leg can be a JOT or THREE60 Sleigh Leg. THREE60 Sleigh Leg is used for 30"– 36" deep surfaces. A support bar will be added to surfaces 66" and 72".

L-SHAPE

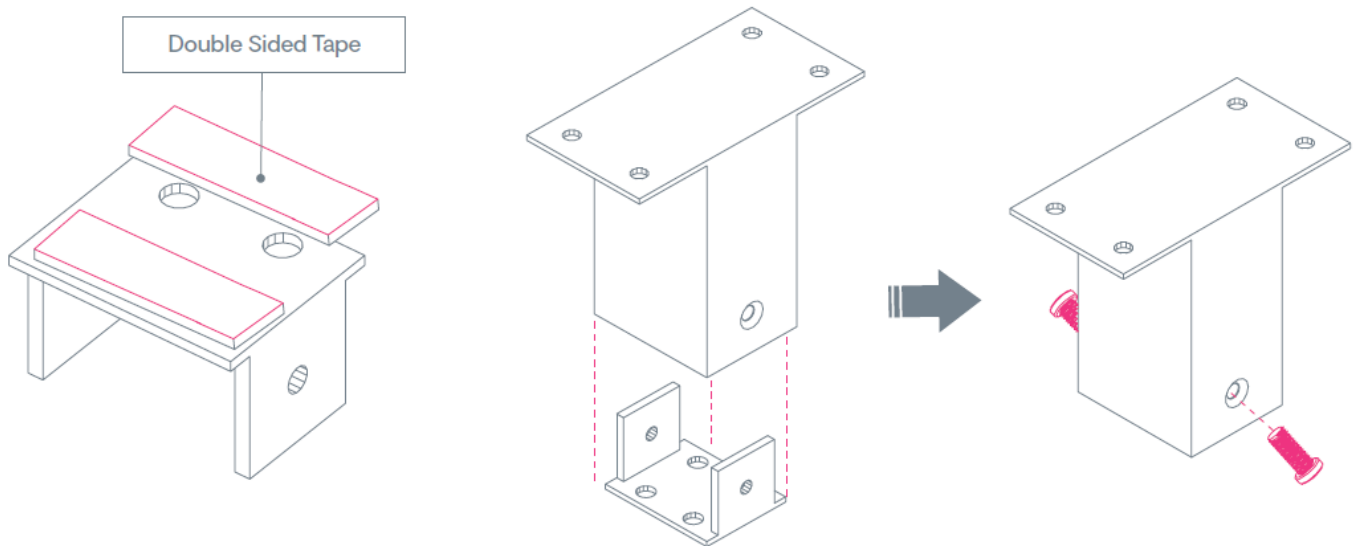
Secure Leg to Surface

- Place assembled laminate storage into the final position. Secure BL24/BL30 leg to surface. Insert wood screws through leg bracket and into the underside of the surface.



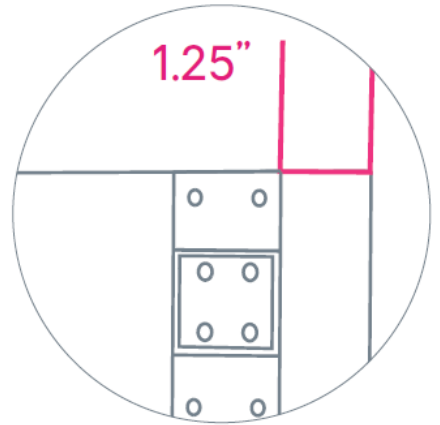
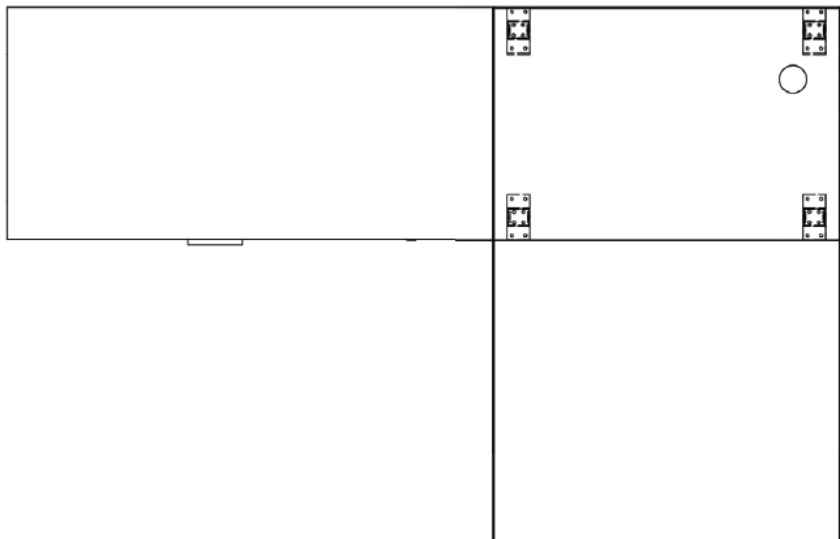
Connect Surface Stand to Mounting Bracket

- Measure, cut, and place double-sided tape on the bottom of the surface stands, leaving the paper backing on the side facing out. Using 2 flat head bolts, connect surface stands to mounting brackets.



Align and Attach Brackets to the Surface

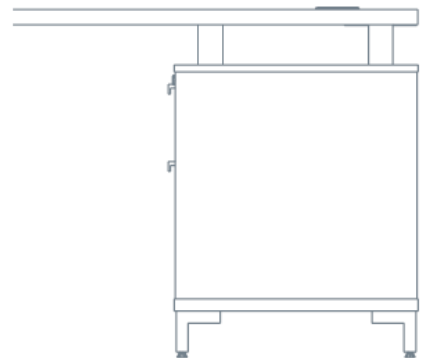
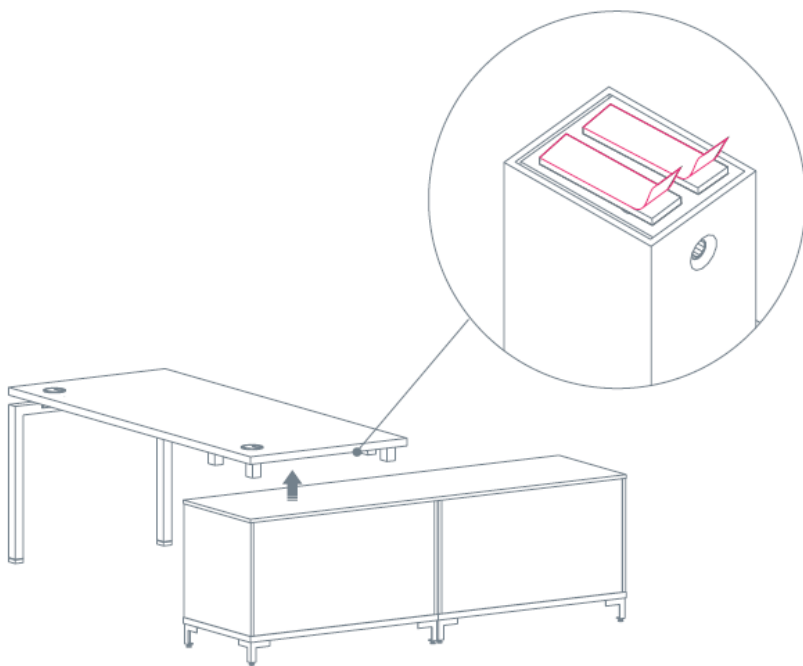
- Align brackets with an edge of the outside surface, then measure 1.25" between the mounting bracket and the front/back of the surface. Insert 4 wood screws per surface stand.



Flip and Align Brackets

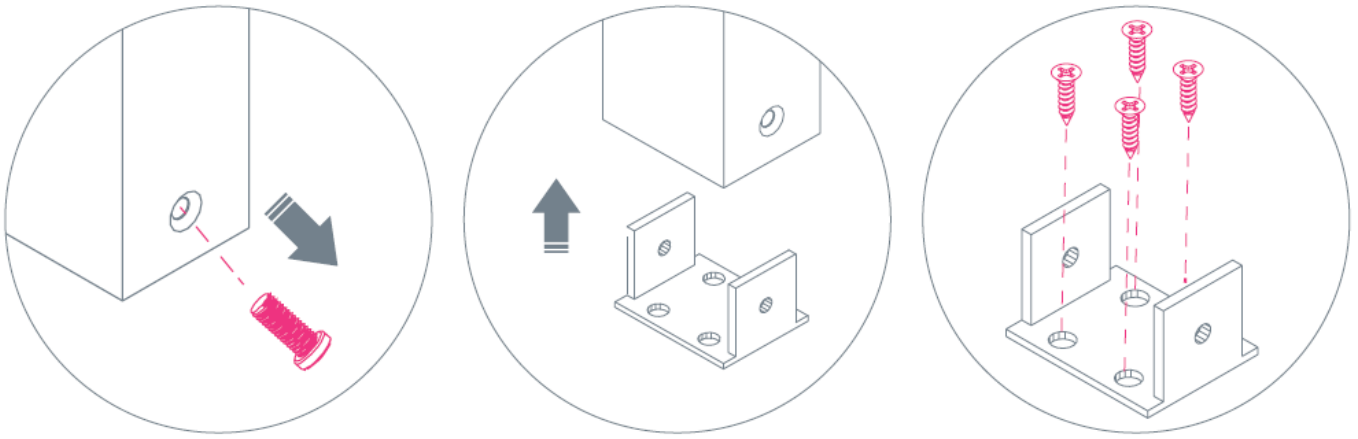
Flip the surface assembly upright, place stands on laminate storage, and align as desired. Once aligned, lift the surface upward and off of the storage piece. Remove paper backing from double-sided tape and lower the surface back down to allow the tape to stick to the top of the storage unit.

NOTE: If installing a full-width modesty panel, leave additional space between the desktop surface and lateral to accommodate the panel.



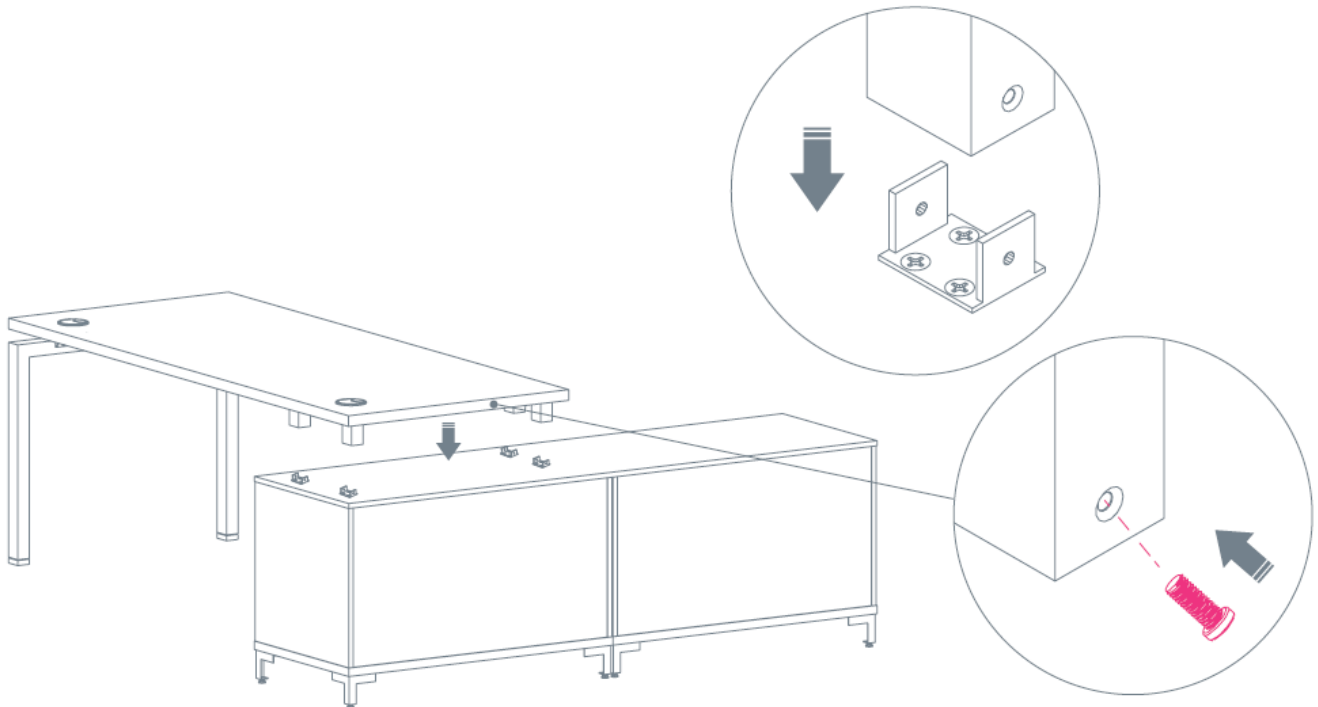
Detach Bracket from Stand to Secure

- Remove bolts holding the stand and bracket together and carefully lift the surface assembly away from the mounting brackets. Mounting brackets should remain on the surface. Use wood screws to secure the bracket.



Place Stand onto Bracket and Secure

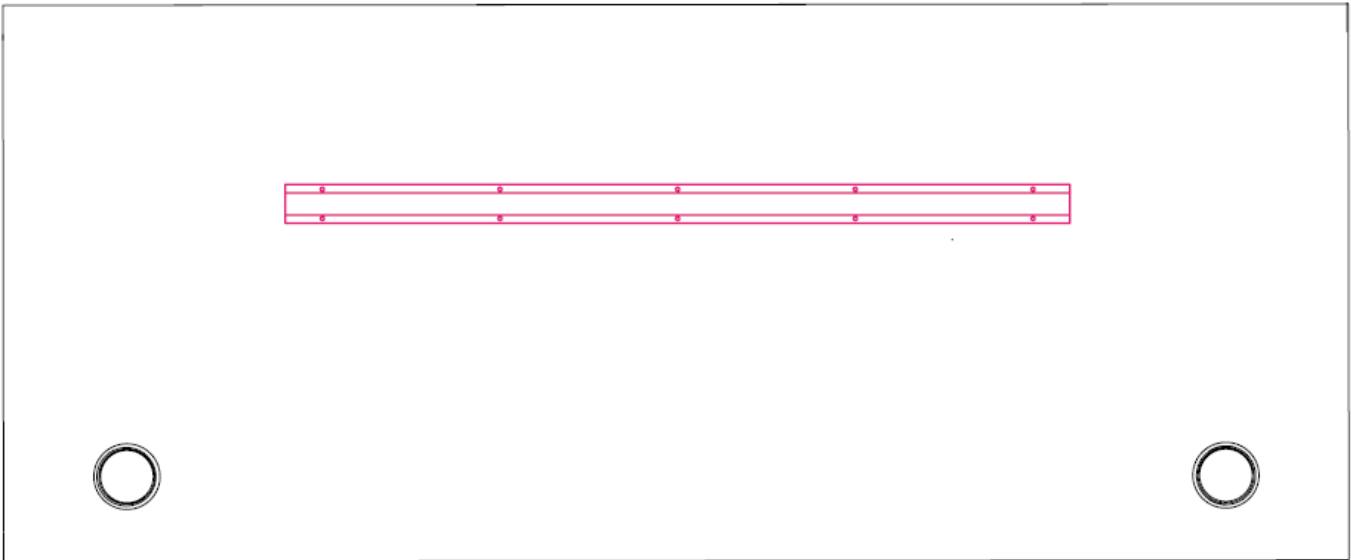
- Check and tighten any bolts and pieces to finish.



END OF L-SHAPE SECTION

Install Support Bar

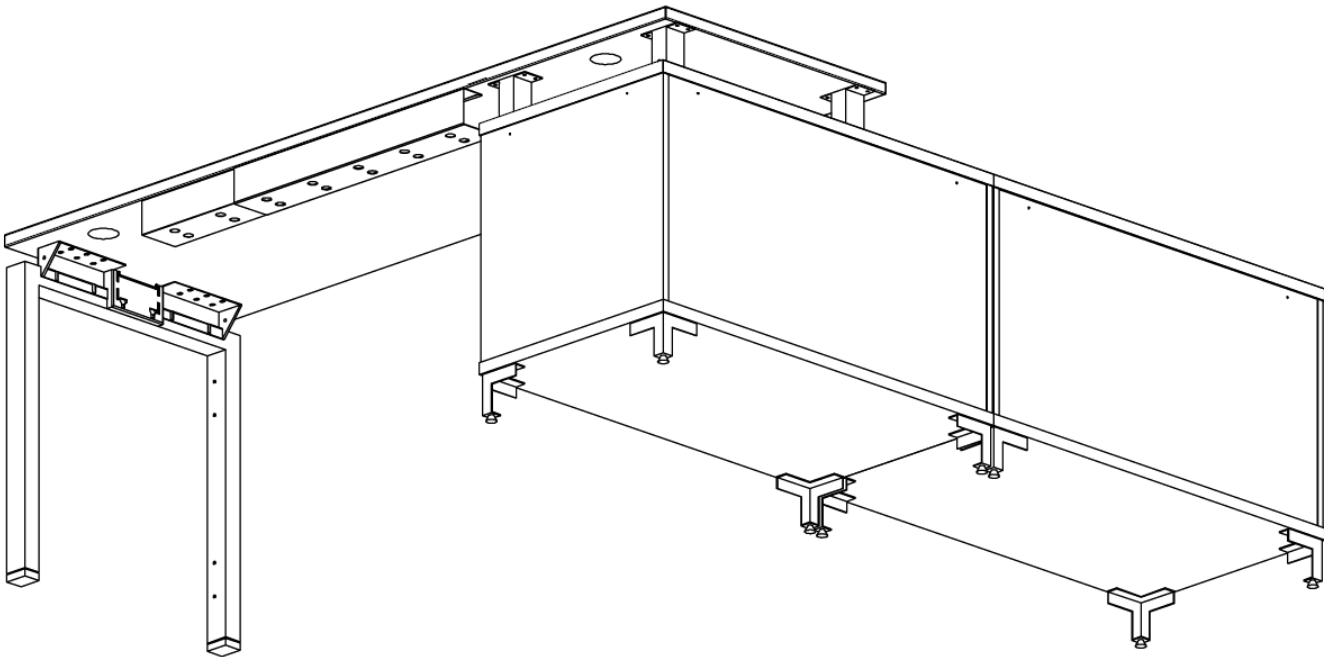
- If working with a 66" or 72" surface, use 10 wood screws to install a support bar under the surface.



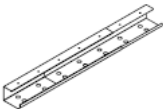

A1: Surface-Mount Cable Management Tray

Overview

Acuity Desk If workstations have power, refer to the JOT power guide.



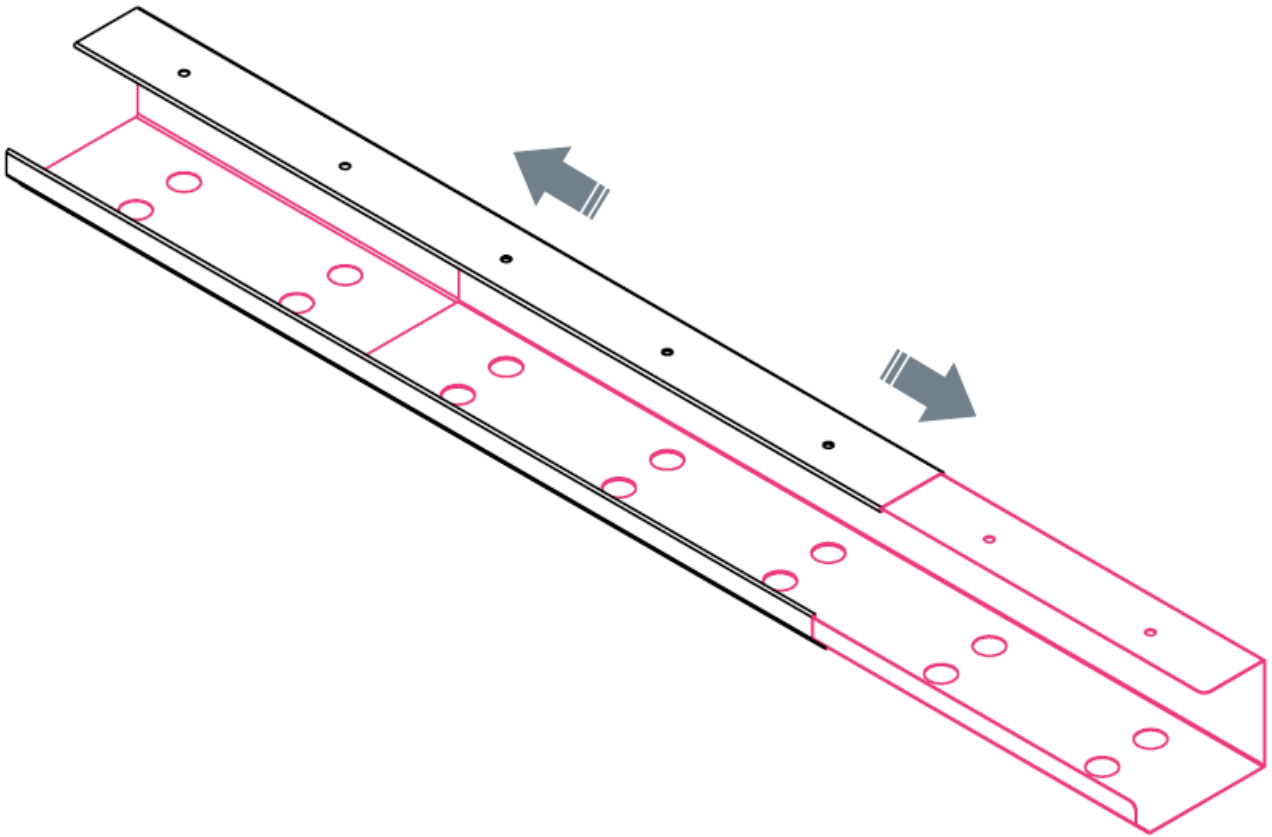
Parts List

Code	Qty.	Description	
BHCT	1	Surface-Mount Cable Management Tray	
	10	Wood Screws	

CABLE TRAY

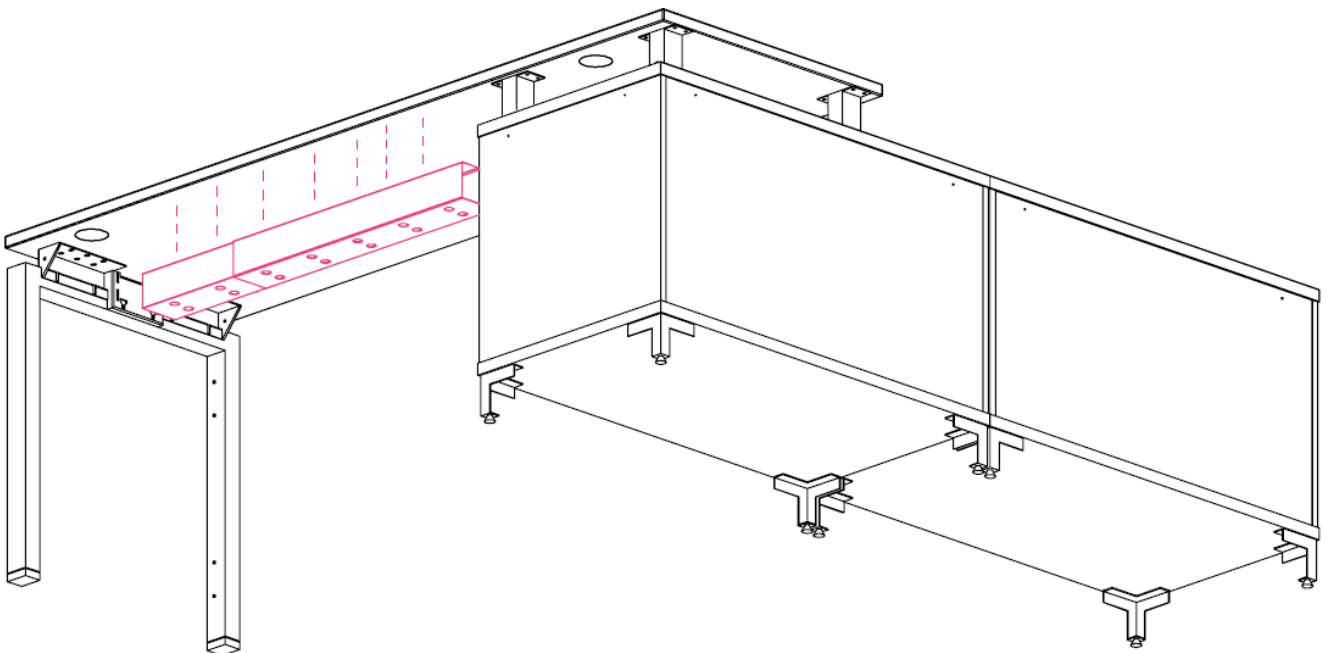
Extend the Cable Tray to the Desired Length

- Extension range: 25"—45".



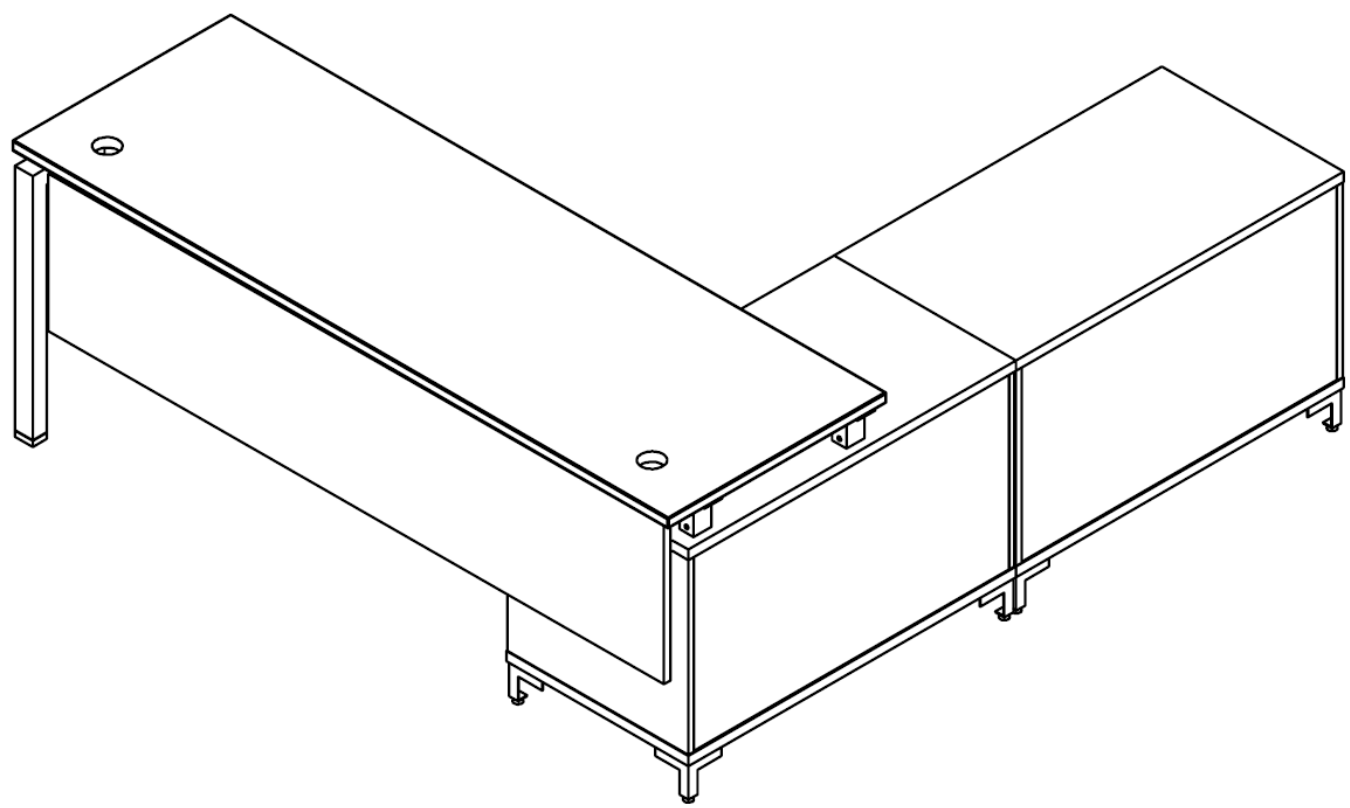
Attach Cable Tray to Surface

- Attach the cable tray using wood screws.







A2: Modesty Panel
Overview

- Acuity Desk All parts listed are for a single modesty panel; additional parts will be needed for additional modesty panels.



Parts List

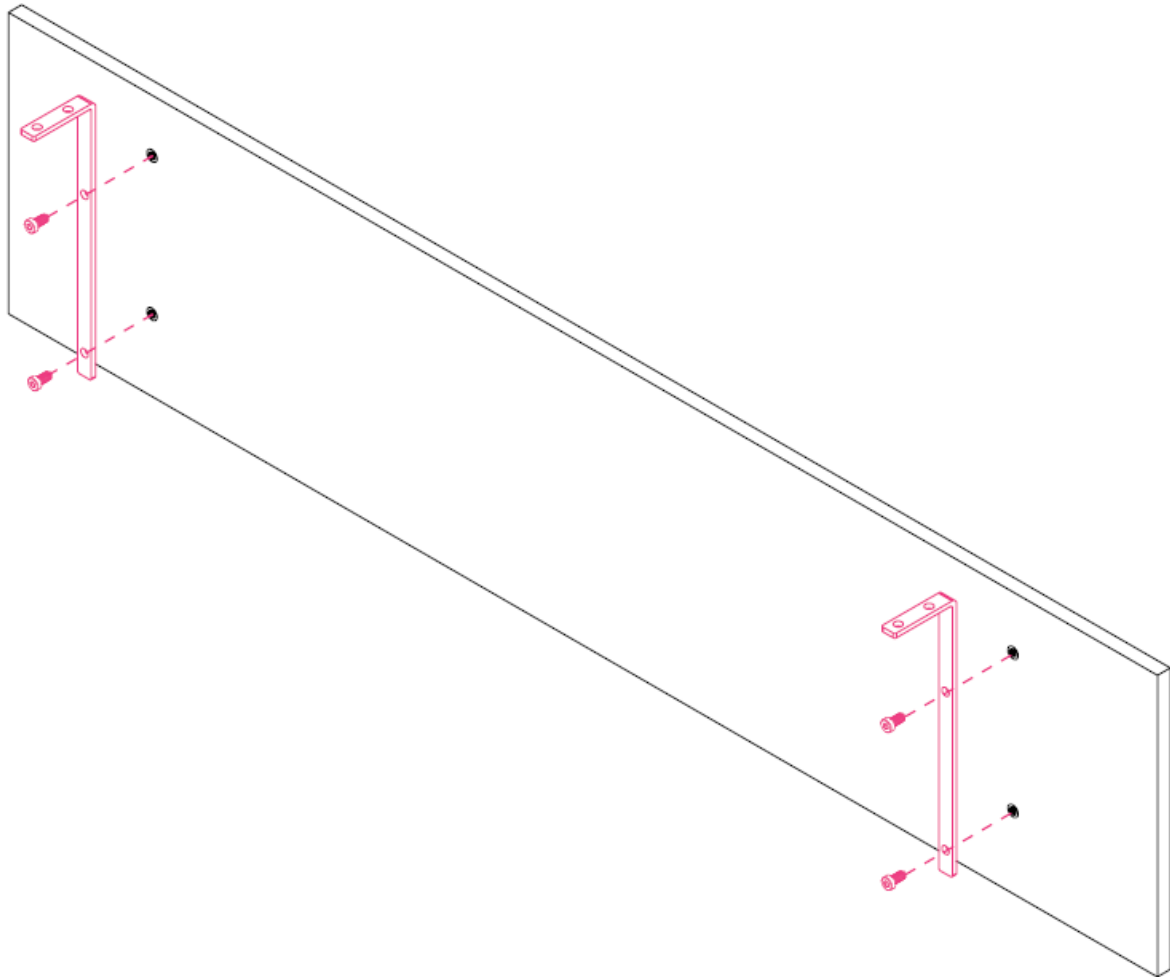
Code	Qty.	Description	
GLMP##	1	Laminate Modesty Panel*	
	4	Machine Screws	
BMPBFB	2	L-Brackets	
	4	Wood Screws	

- For Steel Modesty Panel: components may vary, but the process is similar.

MODESTY PANEL

Secure Brackets to Modesty Panel

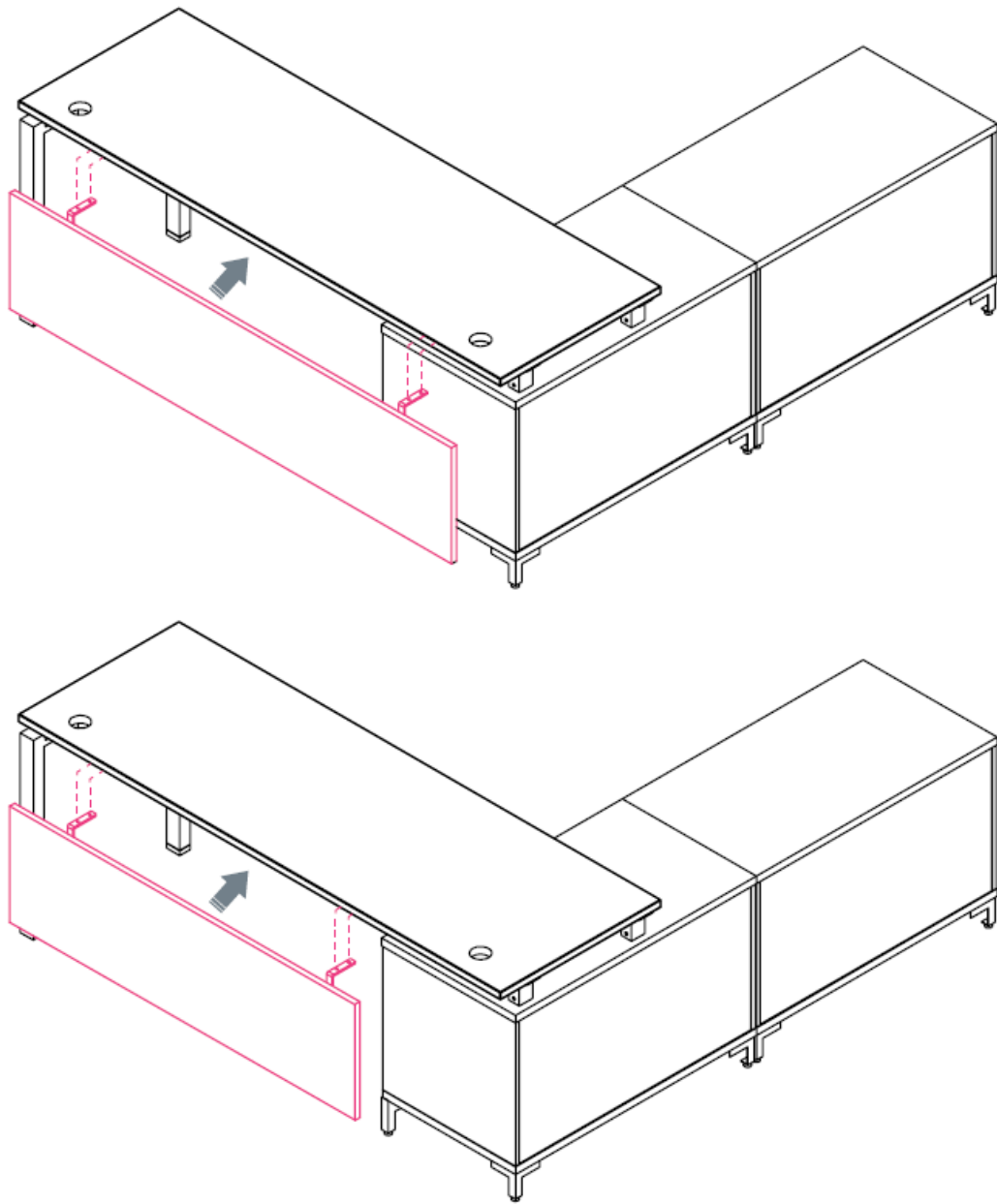
- Connect the BMPBFB bracket to the modesty panel using screws. Secure tightly.



Attach Modesty Panel to Surface

- Attach the modesty panel to the surface using wood screws provided with brackets. The panel will be center-aligned and flush with the back of the surface.

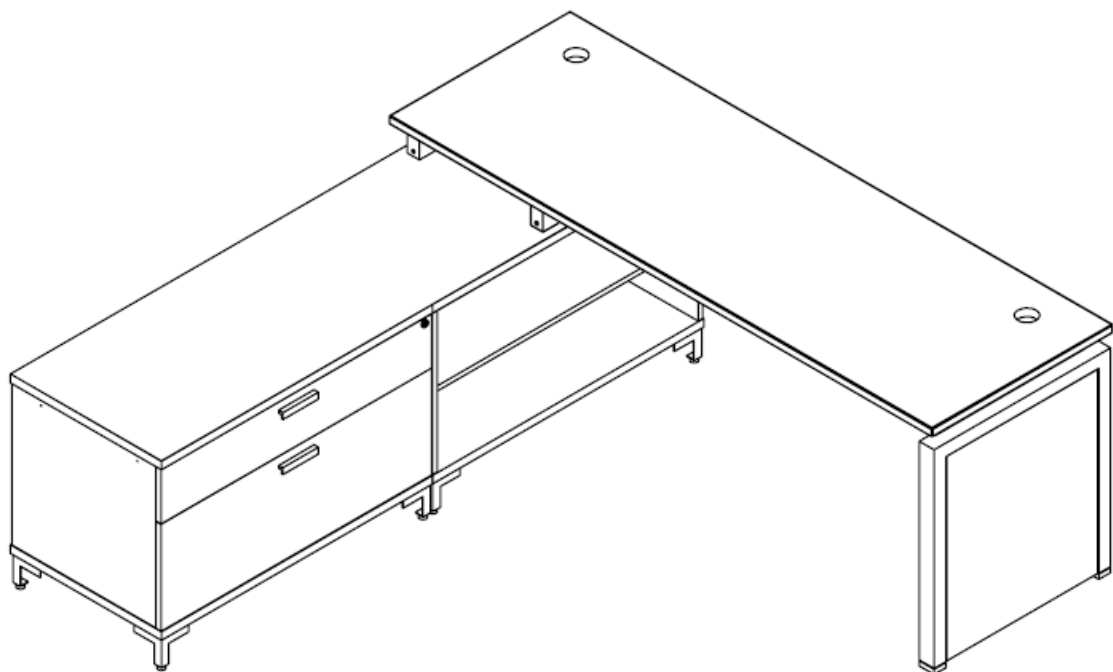
NOTE: Smaller modesty panels will fit in between the leg and lateral.



A3: Laminate Inset End Panels

Overview

Acuity Desk All parts listed are for a single panel; additional parts will be needed for additional panels.



Parts List

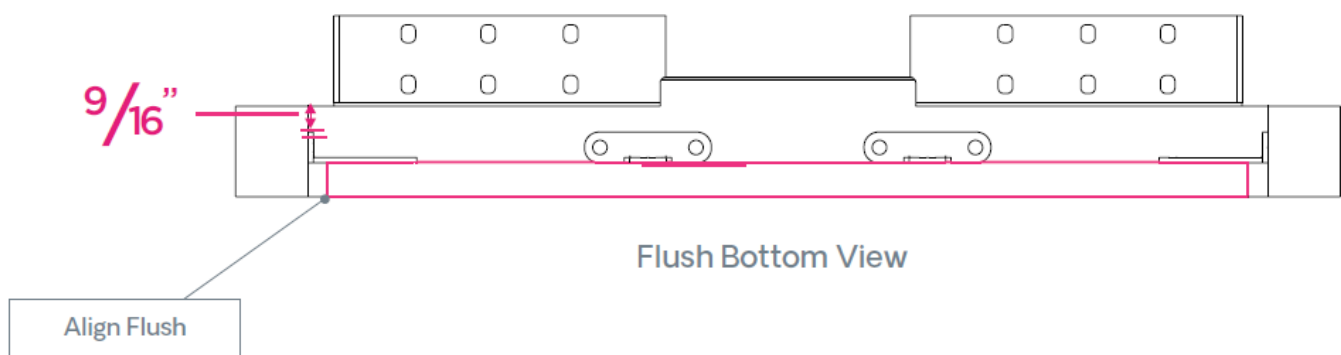
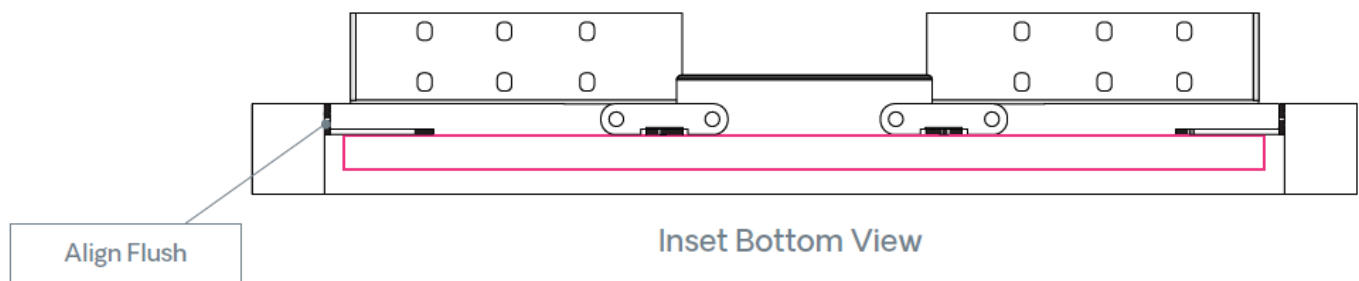
Code	Qty.	Description	
LEPBL1	4	End Panel T-Bracket	
	8	Self-Tapping Screws	
	8	Wood Screws	
GBEP##	1	Laminate Inset End Panel	

LAMINATE INSET END PANELS

Secure Bracket to End Legs

Attach 4 brackets to the end leg using self-tapping screws.

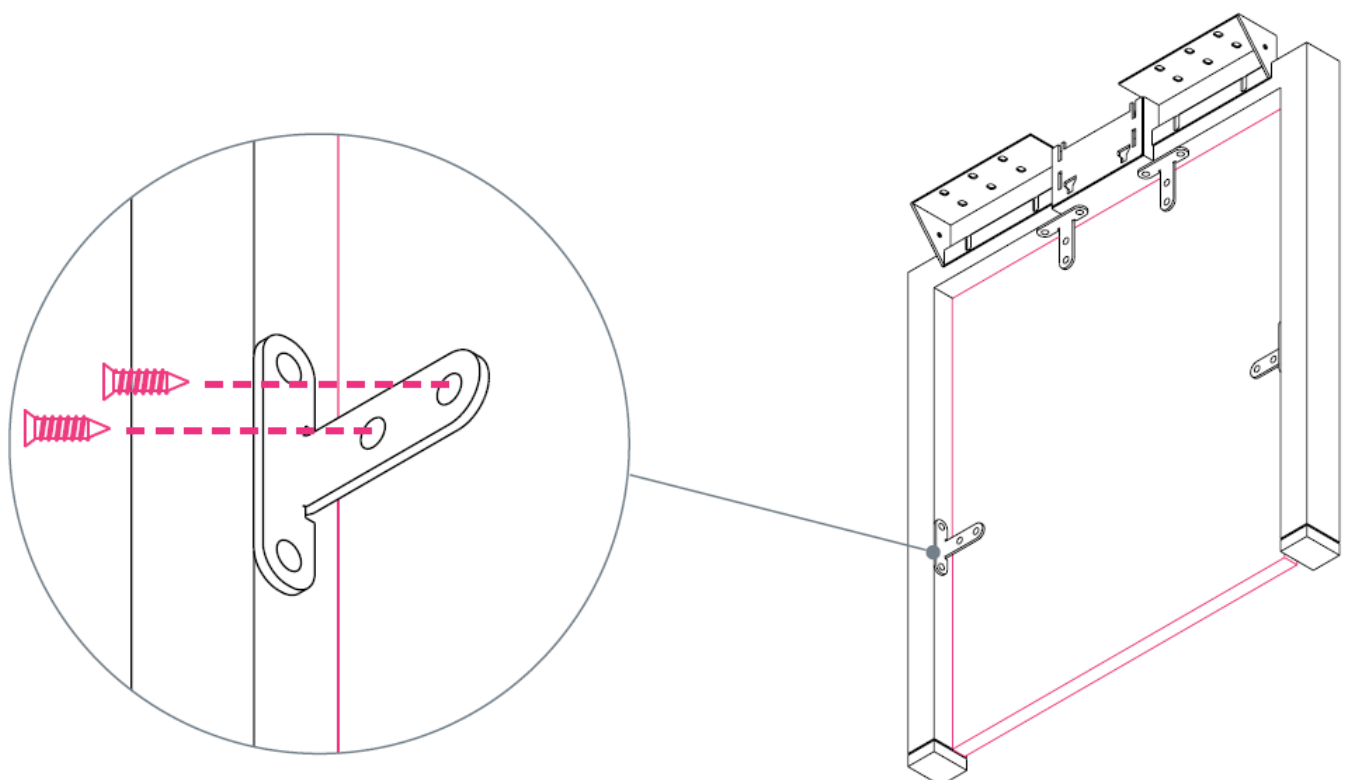
1. Inset—The back of the bracket will align flush with the edge of the leg.
2. Flush—the back of the bracket will be 9/16" from the back edge of the leg.



Attach End Panel

- Slide end panels into place and adjust until flush with the bracket. Use 2 wood screws to secure the panel to each bracket.

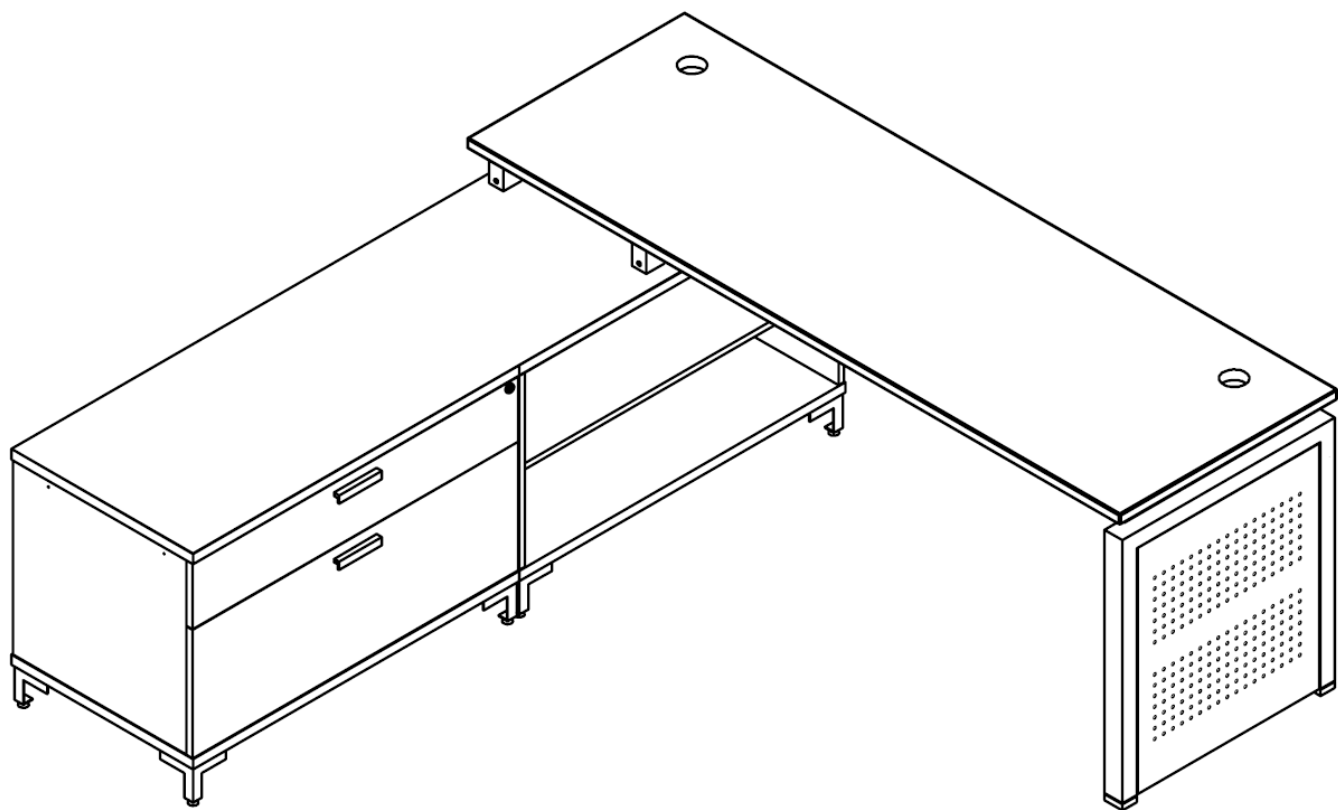
END OF LAMINATE INSET END PANELS SECTION



A4: Steel Inset End Panels

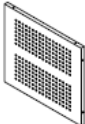

Overview

Acuity Desk All parts listed are for a single panel; additional parts will be needed for additional panels.



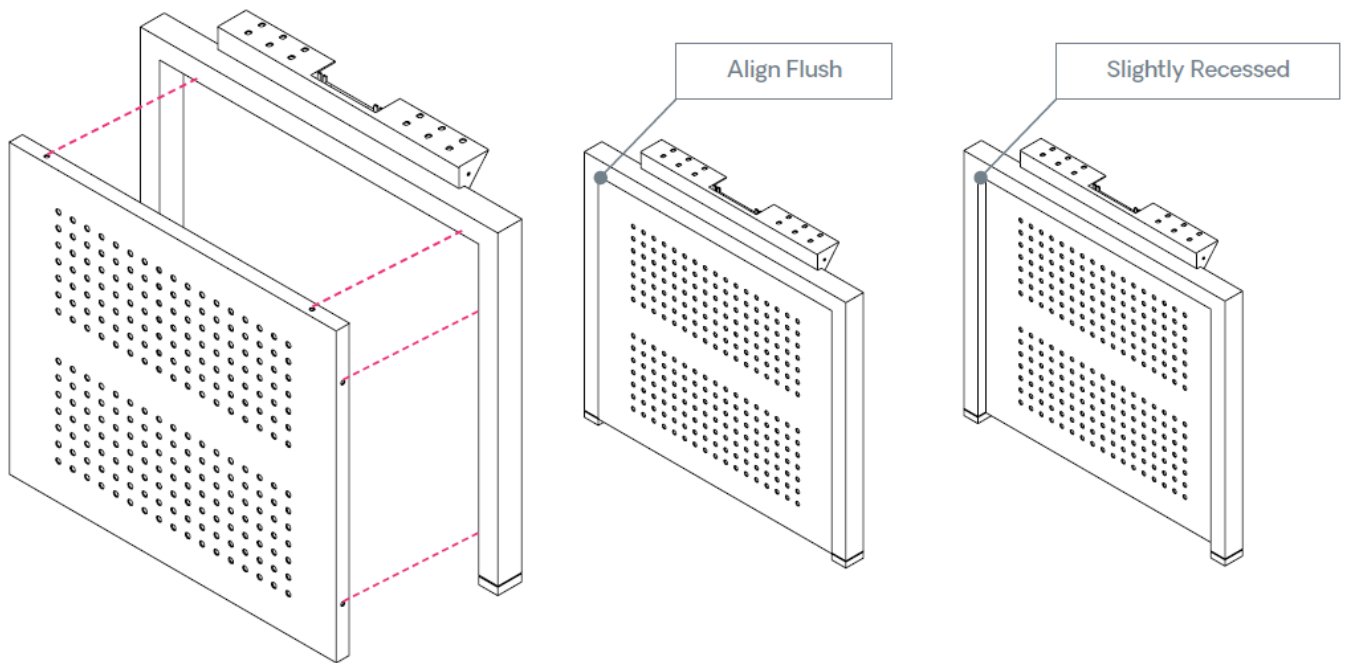
STEEL INSET END PANELS

Parts List

Code	Qty.	Description	
BEP##	1	Steel Inset End Panel	
	6	Self-Tapping Screws	

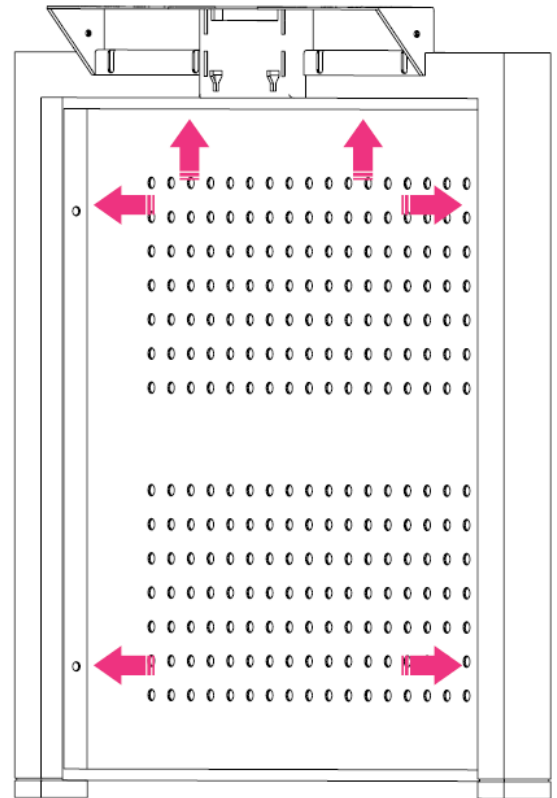
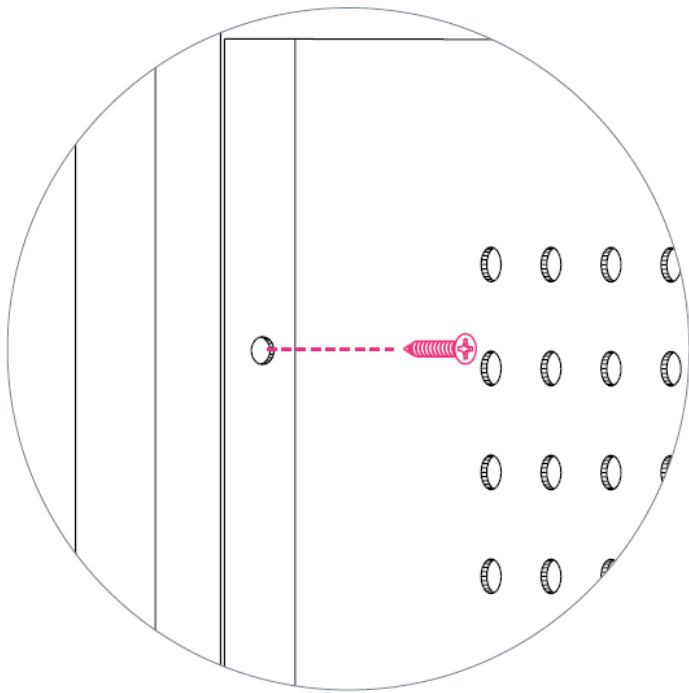
Secure Panels to End Legs

- Slide end panel into place and adjust until either flush with the outside of the leg or slightly recessed.



Attach End Panel


- Use 4-6 self-tapping screws to secure the panel to each leg.



CONTACT

- 1-[866-999-0955](tel:866-999-0955) | hello@juniperoffice.com | juniperoffice.com
- © 2023 Juniper Office | Version 23.0.0

Documents / Resources

	<p>Juniper BLDLS L-Shape Workstation with Storage [pdf] Installation Guide</p> <p>A1, A2, A3, A4, BLDLS L-Shape Workstation with Storage, BLDLS, L-Shape Workstation with Storage, Workstation with Storage, Storage</p>
--	---

References

- [Juniper | Office Furniture for the Entire Workspace](#)
- [User Manual](#)

[Manuals+](#), [Privacy Policy](#)

This website is an independent publication and is neither affiliated with nor endorsed by any of the trademark owners. The "Bluetooth®" word mark and logos are registered trademarks owned by Bluetooth SIG, Inc. The "Wi-Fi®" word mark and logos are registered trademarks owned by the Wi-Fi Alliance. Any use of these marks on this website does not imply any affiliation with or endorsement.