

Contents [[hide](#)]

- [1 Juniper Apstra Cloud Services](#)
- [2 Specifications](#)
- [3 Product Usage Instructions](#)
- [4 Juniper Apstra Cloud Services](#)
- [5 Step 1: Begin](#)
- [6 Step 2: Up and Running](#)
- [7 Adopt Apstra Edge in Juniper Apstra Cloud Services](#)
- [8 Step 3: Keep Going](#)
- [9 FAQs](#)
- [10 Documents / Resources](#)
 - [10.1 References](#)



Juniper Apstra Cloud Services



Specifications

- Product Name: Juniper Apstra Cloud Services
- Interface: Web-based dashboard with conversational NLP support
- Features: Account creation, organization settings configuration, user role management, device adoption, event monitoring

Product Usage Instructions

Step 1: Begin

Create Juniper Apstra Cloud Services Account:

1. Access Juniper Apstra Cloud Services at <https://dc.ai.juniper.net> from a web browser.
2. Click “Create Account” on the Juniper Apstra Cloud Services page.
3. On the My Account page, enter your first name, last name, email address, and password, and click “Create Account”.

Configure Organization Settings and Add Users to Administrator Roles:

1. Configure organization settings by specifying the organization name and address.
2. Add users to administrator roles by entering their first name, last name, email address, and role.
3. Click “Invite” to send an email invite to the user.
4. (Optional) Repeat the above steps to add more users to the organization.

Step 2: Up and Running

Adopt Apstra Edge in Juniper Apstra Cloud Services:

1. If you are a superuser or network administrator, click “Adopt Apstra Edge” on the DC Edges page.
2. Download the Apstra Edge software from the provided URL.

View and Troubleshoot Data Center Events:

Monitor data center events and troubleshoot issues within Juniper Apstra Cloud Services.

Access Juniper Apstra Cloud Services from Mist:

Link your Mist organization with Juniper Apstra Cloud Services to monitor data center events from Mist.

Juniper Apstra Cloud Services

IN THIS GUIDE

- Step 1: Begin | 1
- Step 2: Up and Running | 5
- Step 3: Keep Going | 8

Step 1: Begin

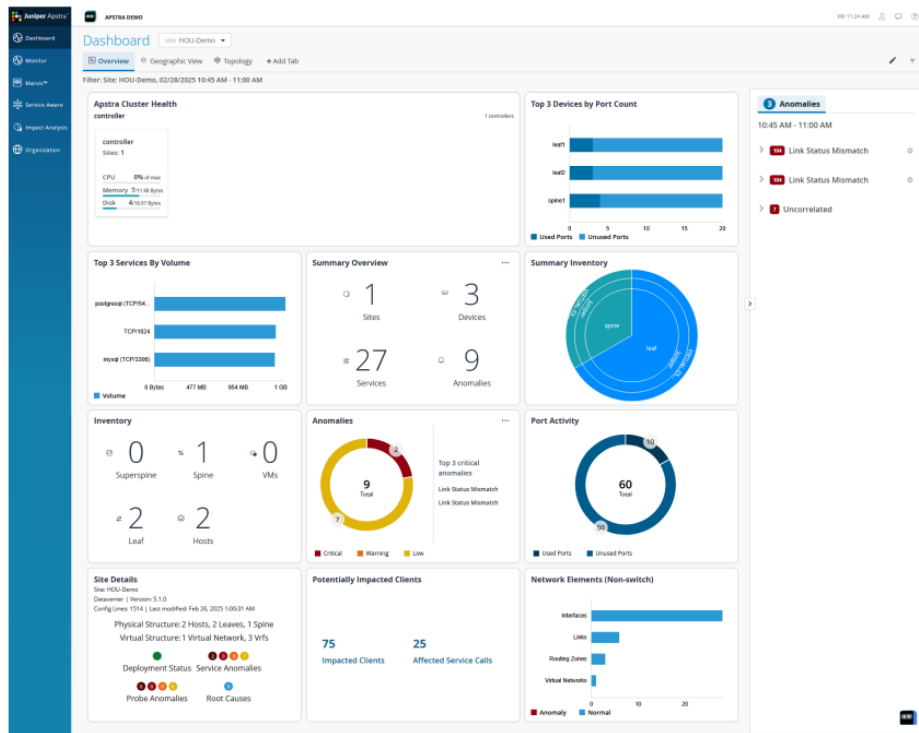
IN THIS SECTION

- Create Juniper Apstra Cloud Services Account | 2
- Configure Organization Settings | 4
- Add Users to Administrator Roles | 4

This guide walks you through the simple steps that you should complete to set up Juniper Apstra Cloud Services and monitor data center events from a data center managed by Juniper Apstra.

Juniper Apstra Cloud Services monitors data centers in real-time and notifies administrators when there is a network event. It analyzes events and provides actionable recommendations. The Apstra Cloud Services Dashboard provides a bird's-eye view of the data center network. The dashboard provides information about the health and performance of the data center at the organization-level, site-level, and ahe site group-level.

Figure 1: Apstra Cloud Services Dashboard



Juniper Apstra Cloud Services also provides a conversational interface that supports natural language processing (NLP), which administrators can use to search for features or troubleshooting information within Juniper Apstra documentation.

Create a Juniper Apstra Cloud Services Account

To access Juniper Apstra Cloud Services, you must create an account in Juniper Apstra Cloud Services and activate your account. You can create an account in Juniper Apstra Cloud Services in one of the following ways:

- Access the Juniper Apstra Cloud Services portal at <https://dc.ai.juniper.net>, create an account, and create your organization.
- Use the invite received from an administrator in Juniper Apstra Cloud Services to join an organization.

To access Juniper Apstra Cloud Services and create an account:

1. Access Juniper Apstra Cloud Services at <https://dc.ai.juniper.net> from a web browser.
2. Click Create Account on the Juniper Apstra Cloud Services page.
3. On the My Account page, type your first name, last name, e-mail address, and password, and click Create Account. The password can contain up to 32 characters, including special characters, based on the password policy of the organization.

Juniper Apstra Cloud Services sends you a confirmation email to validate the account.

4. In the verification e-mail that you receive, click **Validate Me**.

The **My Account** page appears.

5. Click **Create Organization**.

The **Create organization** page appears.

6. Enter a unique name for your organization and click **Create**.

The **New Account** page appears, displaying the organization that you created.

7. Select the organization you created.

You have successfully logged in to your organization in Juniper Apstra Cloud Services.

To access Juniper Apstra Cloud Services using the invite from an administrator:

1. Click **Access organization-name** in the email body of the invite that you received.

The **Invite to Organization** page appears.

2. Click **Register to Accept**.

The **My Account** page appears.

3. Enter your first name, last name, e-mail address, and the password that you'll use to access your account.

The password can contain up to 32 characters, including special characters, based on the password policy of the organization.

4. Click **Create Account**.

5. In the verification e-mail that you received, click **Validate Me**.

The **My Account** page appears.

6. Select the organization for which you received the invite.

You can access the organization in Juniper Apstra Cloud Services. The tasks you can perform in this organization depend on the role assigned to you.

By default, the first user who creates an account and the organization has the superuser privileges in that organization. The Super User can perform functions such as creating organization, adding sites, adding users to various roles, and so on. For more information about roles, see [Predefined User Roles Overview](#).

Configure Organization Settings

A super user in Juniper Apstra Cloud Services can configure organization settings and

perform the following tasks:

- View the organization name and organization ID, and modify the organization name.
- Enable or disable the password policy for the organization, and modify the password policy when the password policy is enabled.
- Modify the session timeout policy for the organization.
- Add, modify, and delete identity providers.
- Add, modify, and delete custom roles.
- Configure webhooks for the organization.
- Add a Juniper account to link Juniper Networks devices to the organization.
- Generate, edit, and delete API tokens for various roles in the organization.

For detailed information and the steps to configure organization settings, see [Manage Organization Settings](#).

Add Users to Administrator Roles

To add users to an organization, you must be a user with Super User privileges. You add a user by sending them an invite from Juniper Apstra Cloud Services. When you send an invite, you can assign a role to the user depending on the function they need to perform in the organization.

To add a user to the organization:

1. Click Organization > Administrators.
2. On the Administrators page, click Invite Administrators.
3. In the Administrators: New Invitation page, enter the user details such as e-mail address, first name, and last name, and the role that the user should perform in the organization. For more information about roles in Juniper Apstra Cloud Services, see [Predefined User Roles Overview](#).

The first name and the last name can be up to 64 characters each.

4. Click Invite.

An email invite is sent to the user, and the Administrators page displays the status of the user as Invited.

5. (Optional) Repeat the above steps to add more users to the organization.

Step 2: Up and Running

IN THIS SECTION

1. Adopt Apstra Edge in Juniper Apstra Cloud Services | 5
2. View and Troubleshoot Data Center Events | 7
3. Access Juniper Apstra Cloud Services from Mist | 7

Adopt Apstra Edge in Juniper Apstra Cloud Services

To receive data center events from the Juniper Apstra-managed data center, you need to install Apstra Edge in the data center and then onboard it in Juniper Apstra Cloud Services. Apstra Edge maintains connectivity with the cloud and sends event information it receives from Juniper Apstra to Juniper Apstra Cloud Services. For more information about installing Juniper Apstra Edge, see Juniper Apstra Edge Setup Guide.

To adopt Juniper Apstra Edge in Juniper Apstra Cloud Services:

1. Log in to Juniper Apstra Cloud Services.
2. Navigate to Organization > Inventory.

NOTE: If you are a superuser or a network administrator who has access to all sites in the organization, you can also adopt an Apstra Edge device from the DC Edges page.

3. Click Adopt Apstra Edge.

The Adopt Apstra Edge page is displayed.

Figure 2: Adopt Apstra Edge

Adopt Apstra Edge

Edge Name * Management URL * Username * Password *

Flow Server Details ☒

Flow Server Name * Management URL * Username * Password *

vCenter Details ☒

vCenter Name * Management URL * Username * Password *

Apstra Edge Download location

Adopt Cancel

4. Enter the edge name, management URL, and the user name and password to access Apstra.

- Edge Name—Name to identify the Juniper Apstra Edge.
- Management URL—URL of Juniper Apstra instance installed in the data center.
- Username—User name used to log into Juniper Apstra.
- Password—Password to log into Juniper Apstra.

5. Configure Apstra Flow Server information.

- After the details for Flow Server Details are configured, you can view information about the data center network topology, hosts and endpoints, services, and anomalies, if any, on the Service Aware and the Impact Analysis pages.
- Flow Server Details—Enable this option to collect flow data from the Apstra instance. Options for configuring the flow server parameters are displayed only if you enable the Flow Server Details toggle button.
- Flow Server Name—Name of the Apstra Flow server.
- Management UOpenSearchREST API URL to connect to the Apstra Flow server. The URL must be in the format `https://ip-addresss:9200`. For example, <https://10.28.52.4:9200>.
- Username—Username to log into the Apstra Flow server.
- Password—Password to log into the Apstra Flow server.

6. Configure vCenter details.

After the details for vCenter are configured, you can view information about the VM layer on the Service Aware, the Impact Analysis, and the Dashboard Topology pages.

- Center Details—Enable this option to collect information about the virtualized environments. Options for configuring the vCenter parameters are displayed only if you enable the
- Center Details toggle button. You can configure parameters for multiple vCenters.
- Center Name—A unique, user-defined name of the vCenter server.
- Management URL—REST API URL to connect to the vCenter server. The URL must be in the format `https://ip-address`.
- Username—Username to log into the vCenter server.
- Password—Password to log into the vCenter server.

7. Click Adopt. The newly added Apstra Edge is listed on the Inventory page with the status Unregistered . Juniper Apstra Cloud Services generates a registration ID for Juniper Apstra Edge. You must configure this registration ID in Juniper Apstra Edge during installation.

NOTE: You can download the Apstra Edge software from the URL provided in the

Apstra Edge Download Location field.

CAUTION: Apstra Edge uses the edge registration ID generated by Juniper Apstra Cloud Services to retrieve the organization ID, secret, and device ID during installation. These IDs must be stored securely as they cannot be retrieved after the initial setup is completed.

8. Install Apstra Edge and configure the registration ID as described in the Juniper Apstra Edge Setup Guide.

The registration status of Apstra Edge will be displayed as Registered. You can also see the cloud connectivity and Apstra connectivity status as Connected, indicating that Juniper Apstra Edge is connected with Juniper Apstra Cloud Services and Apstra Edge is connected with Juniper Apstra instance.

View and Troubleshoot Data Center Events

After Apstra Edge is registered, Apstra Cloud Services starts receiving data center events and Apstra flow information from Apstra Edge. You can use the visualizations of the Apstra flow information to understand how the services and clients are utilizing the data center network.

Administrators can view the data center events and anomalies in real-time and resolve them proactively before they impact network traffic. You can view these events and anomalies in the Marvis Actions dashboard and on the Service Aware and Impact Analysis pages. To troubleshoot events, you can access Juniper Apstra from Juniper Apstra Cloud Services.

For more information about viewing and troubleshooting data center events, see [View Data Center Events in Marvis Actions](#), [Access Juniper Apstra from Juniper Apstra Cloud Services](#), and [Impact Analysis](#).

Access Juniper Apstra Cloud Services from Mist

If you manage your enterprise network using Mist and your data center using Juniper Apstra, you can monitor data center events too from Mist by linking the organization in Mist with the organization in Juniper Apstra Cloud Services. Once the organization in Mist is linked to the organization in Juniper Apstra Cloud Services, you can view the total number of data center events in Data Center/Application on the Marvis Actions page in Mist. To view more detailed information about an event, you need to access

Juniper Apstra Cloud Services by clicking the Data Center Actions event type under Data Center/Application.

- You must be a user with Super User or a Network Admin role to perform this task.

To enable Juniper Apstra Cloud Services from Mist:

1. Log in to Juniper Apstra Cloud Services.
2. From the Organization > Settings page, generate an API token.
3. Log in to the Juniper Mist portal.
4. Navigate to Organization > Settings page.
5. Locate the Apstra Cloud Services Integration tile.

Enter the following information:

- Organization ID—Copy the organization ID from Juniper Apstra Cloud Services and paste it here.
 - API Token—Copy the API token generated in step 2 in Juniper Apstra Cloud Services and paste it here.
 - API Token Name—Enter the API token name that you defined in Juniper Apstra Cloud Services.
6. Click Save.
- The organizations in Mist and Juniper Apstra Cloud Services are linked now. In a few minutes, you'll notice that the Data Center/Application in Marvis Actions in Mist is active and displays the total number of data center events under the Data Center Actions event type.
7. Click the Data Center Actions event type under Data Center/Application to launch Juniper Apstra Cloud Services. Juniper Apstra Cloud Services opens in a new browser window or tab in read-only mode. Log in to ACS to access all features of the application.

Step 3: Keep Going

IN THIS SECTION

- What's Next | 9
- General Information | 9

What's Next

If you want to	Then
Know more about Marvis VNA for Data Center	Marvis Virtual Network Assistant for Data Center
Learn about event types displayed in the Marvis Actions Dashboard	Event Types Displayed in Marvis Actions

General Information

If you want to	Then
Know more about Juniper Apstra Cloud Services	Juniper Apstra Cloud Services Documentation
Learn about new features in Juniper Apstra Cloud Services	Release Notes

Learn With Videos

If you want to	Then
Get short tips and instructions that provide quick answers, clarity, and insight into specific features and functions of Juniper technologies.	See Learning with Juniper on Juniper Networks' main YouTube page.
View a list of the many free technical trainings we offer at Juniper.	Visit the Getting Started page on the Juniper Learning Portal.

Juniper Networks, the Juniper Networks logo, Juniper, and Junos are registered trademarks of Juniper Networks, Inc. in the United States and other countries. All other

trademarks, service marks, registered marks, or registered service marks are the property of their respective owners. Juniper Networks assumes no responsibility for any inaccuracies in this document. Juniper Networks reserves the right to change, modify, transfer, or otherwise revise this publication without notice. Copyright © 2025 Juniper Networks, Inc. All rights reserved.

FAQs

What's Next:

If you want to know more about Marvis VNA for Data Center:

Learn about Marvis Virtual Network Assistant for

Data Center.

If you want to Learn about event types displayed in Marvis Actions Dashboard:

Event Types Displayed in Marvis Actions.


If you want to know more about Juniper Apstra Cloud Services:

Check out the Juniper Apstra Cloud Services Documentation Release Notes for new features.

If you want to get short tips and instructions:

Visit the Learning with Juniper on Juniper Networks YouTube page for free technical training.

Documents / Resources

	Juniper Apstra Cloud Services [pdf] Owner's Manual Apstra Cloud Services, Cloud Services, Services
---	---

References

- [User Manual](#)

Leave a comment

Your email address will not be published. Required fields are marked *

Comment *

Name

Email

Website

☐ Save my name, email, and website in this browser for the next time I comment.

Post Comment

Search:

e.g. whirlpool wrf535swhz

Search

[Manuals+](#) | [Upload](#) | [Deep Search](#) | [Privacy Policy](#) | [@manuals.plus](#) | [YouTube](#)

This website is an independent publication and is neither affiliated with nor endorsed by any of the trademark owners. The "Bluetooth®" word mark and logos are registered trademarks owned by Bluetooth SIG, Inc. The "Wi-Fi®" word mark and logos are registered trademarks owned by the Wi-Fi Alliance. Any use of these marks on this website does not imply any affiliation with or endorsement.