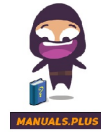




JSPN 32387
Wireless
Keyboard



JUNIPER SYSTEMS JSPN 32387 Wireless Keyboard User Guide

[Home](#) » [JUNIPER SYSTEMS](#) » JUNIPER SYSTEMS JSPN 32387 Wireless Keyboard User Guide 

Contents

- [1 JUNIPER SYSTEMS JSPN 32387 Wireless Keyboard](#)
- [2 Specifications](#)
- [3 Product Usage Instructions](#)
- [4 POWER KEYBOARD ON/OFF](#)
- [5 PAIR THE KEYBOARD](#)
- [6 FAQs](#)
- [7 Documents / Resources](#)
 - [7.1 References](#)
- [8 Related Posts](#)



JUNIPER SYSTEMS JSPN 32387 Wireless Keyboard



Specifications

- Model: Allegro Wireless Keyboard
- Model Numbers: JSPN 32385, 32386, 32387, 32388
- Connection: Wireless
- Charging Time: 4-6 hours
- Port: USB-C

Product Usage Instructions

INSTALL HAND STRAP

Connect on the preferred side and adjust as needed.



ATTACH ARCHER 4
(JSPN 32385, 32386)

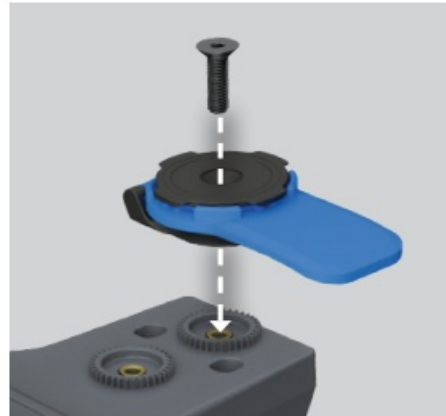


NOTE: Attach Archer 4 with the USB-C port on the right side.

ATTACH THIRD-PARTY DEVICE (JSPN 32387, 32388).



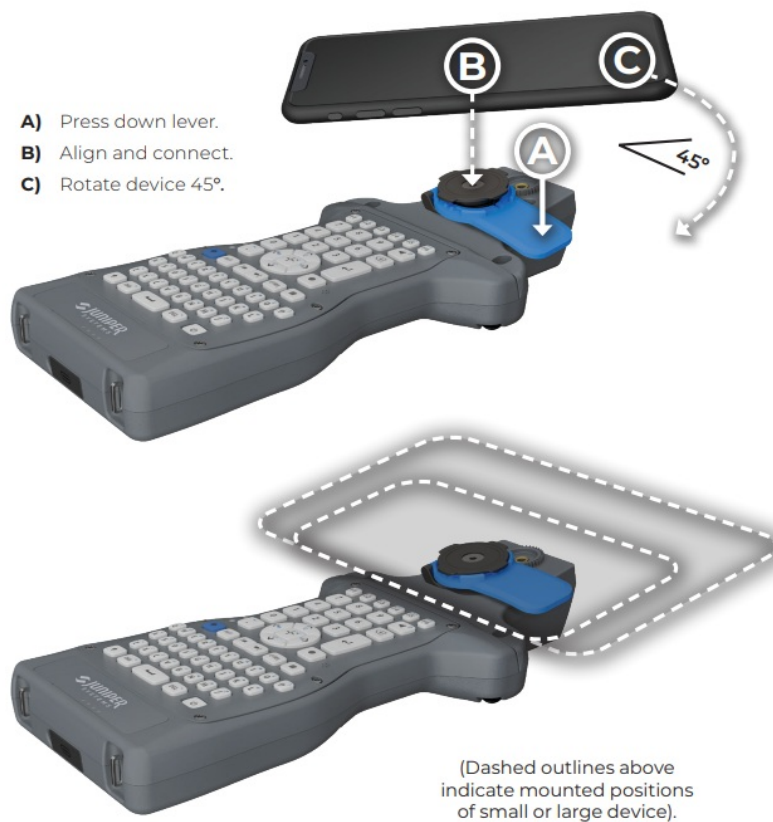
(For small device)



(For large device)

ATTACH THIRD-PARTY DEVICE

The Allegro Wireless Keyboard uses the Quad Lock® system to attach a third-party handheld device. The Quad Lock Lever Head is included with the keyboard, but you must purchase separately the Quad Lock case that fits your handheld device (available at quadlockcase.com) or the Quad Lock Universal Adaptor (available through the Juniper Systems store or quadlockcase.com).



CAUTION: Fully charge your battery before your first use.

CAUTION: DO NOT USE THE USB PORT IF IT IS WET. Dry the port completely before connecting to power. Failure to do so will void the product warranty.



POWER KEYBOARD ON/OFF

- Power on: Press and release the Power key.
- Power off: Press and hold the Power key for 2 seconds until the red LED turns off.



PAIR THE KEYBOARD

The Allegro Wireless Keyboard pairs to your handheld device through Bluetooth®. The Power key is used to manage the Bluetooth connection on the keyboard.

- Pair the devices: Press and hold the Power key for 5 seconds until the blue LED is blinking rapidly. On your handheld device, select the Allegro Wireless Keyboard from the list of Bluetooth devices. A solid blue LED indicates the pairing was successful.
- Unpair the devices: Press and hold the Power key for 10 seconds until the blue LED turns off.

ALLEGRO WIRELESS KEYBOARD

Download the full user's manual: www.junipersys.com/support/allegro-wireless-keyboard/documentation

FAQs

Q: How do I know if my keyboard is fully charged?

A: When the red LED indicator turns off, it indicates that the keyboard is fully charged.

Q: Can I connect multiple devices to the keyboard simultaneously?

A: The keyboard supports connecting one device at a time. Disconnect the current device before connecting to a new one.

Q: What should I do if my keyboard stops responding?

A: Try turning off the keyboard and then turning it back on. If the issue persists, check the battery level and recharge if needed.

Documents / Resources



JUNIPER SYSTEMS JSPN 32387 Wireless Keyboard [pdf] User Guide
JSPN 32387, JSPN 32387 Wireless Keyboard, Wireless Keyboard, Keyboard

References

- [User Manual](#)

Manuals+, Privacy Policy

This website is an independent publication and is neither affiliated with nor endorsed by any of the trademark owners. The "Bluetooth®" word mark and logos are registered trademarks owned by Bluetooth SIG, Inc. The "Wi-Fi®" word mark and logos are registered trademarks owned by the Wi-Fi Alliance. Any use of these marks on this website does not imply any affiliation with or endorsement.