



Juniper NETWORKS AP24 Access Point Installation Guide

[Home](#) » [JUNIPER NETWORKS](#) » Juniper NETWORKS AP24 Access Point Installation Guide 

Contents

- [1 Juniper NETWORKS AP24 Access Point](#)
- [2 Product Information](#)
- [3 Product Usage Instructions](#)
- [4 Documents / Resources](#)
- [5 Related Posts](#)



Juniper NETWORKS AP24 Access Point



Product Information

- The Mist AP24 is a hardware device that functions as an access point for wireless networks. It is equipped with three IEEE 802.11ax radios, which support 2×2 MIMO with two spatial streams in multi-user (MU) or single-user (SU) mode. The AP24 can operate simultaneously in the 6GHz band, 5GHz band, and 2.4GHz band, or two bands and a dedicated tri-band scan radio.
- The AP24 features several I/O ports, including a reset button, USB 2.0 support interface, and an Ethernet port (Eth0+PoE) that supports 100/1000/2500/5000BASE-T RJ45 with 802.3at/802.3bt PoE PD capabilities.
- For installation, the AP24 can be wall-mounted using screws with a 1/4in. (6.3mm) diameter head and a length of at least 2 in. (50.8mm). The AP24 box includes an APBR-U set screw and an eyehook for this purpose. Additionally, the AP24 can be mounted on a threaded rod adapter that is compatible with rod sizes of 1/2-13, 5/8-11, or M16-2.
- Technical specifications of the AP24 include power options of 802.3at/802.3bt PoE, dimensions of 185mm x 185mm x 39mm (7.28in x 7.28in x 1.54in), and an operating weight. The device operates within a specified temperature range and humidity level and has a maximum operating altitude. It complies with safety standards such as FCC Part 15 Class B and UL 62368-1, among others. The AP24 also features a multi-color status LED indicator.
- The AP24 family of Access Points comes with a limited lifetime warranty.

Product Usage Instructions

1. Choose the appropriate location for the AP24 installation, ensuring it is within range of the desired wireless network coverage.
2. If wall-mounting, use screws with a 1/4in. (6.3mm) diameter head and a length of at least 2 in. (50.8mm). Attach the APBR-U set screw and eyehook included in the AP24 box to securely mount the device.
3. If using a threaded rod adapter, ensure the rod size is compatible with the APBR-ADP-T58 (5/8-inch), APBR-ADP-M16 (16mm), or APBR-ADP-T12 (1/2-inch) adapters. Attach the adapter to the threaded rod and secure it in place.

Note: For detailed configuration and management of the AP24, refer to the full user manual provided with the device.

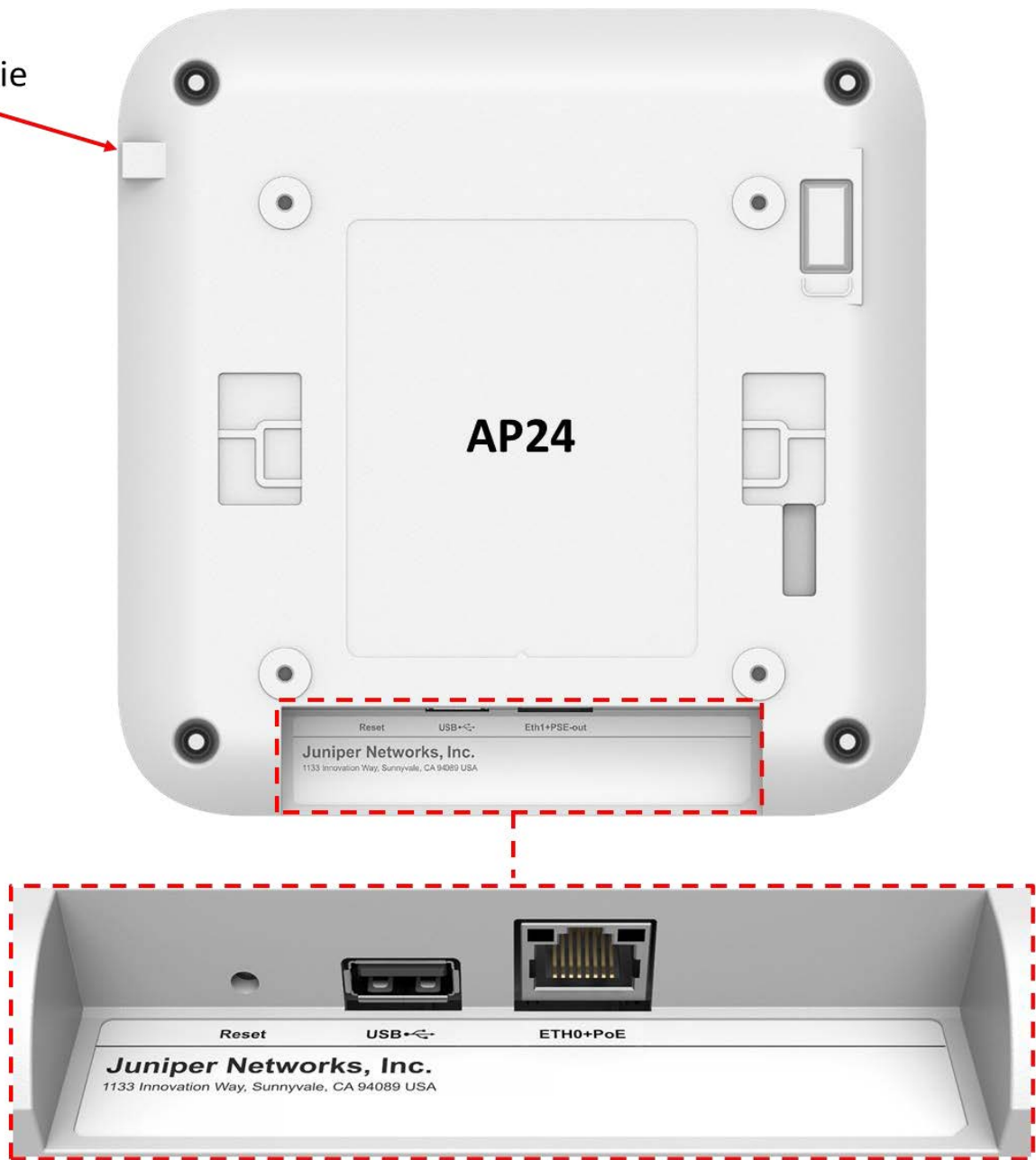
AP24 Hardware Installation Guide

Overview

The Mist AP24 contains three IEEE 802.11ax radios that deliver 2×2 MIMO with two spatial streams when operating in multi-user (MU) or single-user (SU) mode. The AP24 is capable of operating simultaneously in the 6GHz band, 5GHz band, and 2.4GHz band or two bands and a dedicated tri-band scan radio.

I/O ports

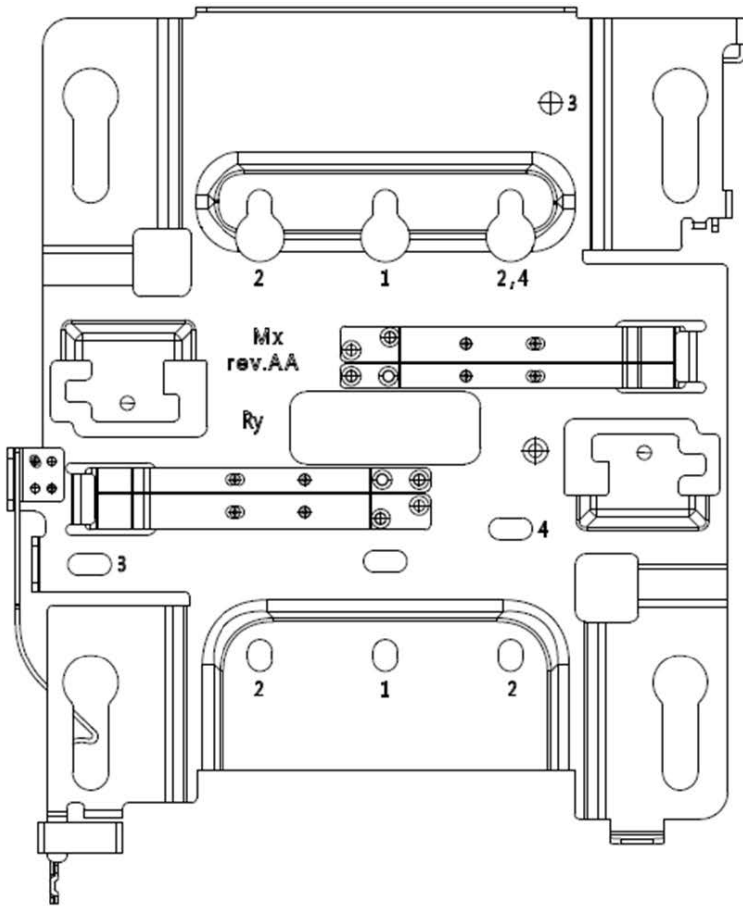
Safety tie



Reset	Reset to the factory default settings
USB	USB2.0 support interface
Eth0+PoE	100/1000/2500/5000BASE-T RJ45 interface that supports 802.3at/802.3bt PoE PD

AP24 Mounting

APBR-U Mounting box options



Holes	Mounting options
1	US Single gang, 4 inch round, 3.5 inch round
2	US Double gang, Wall/ceiling mount
3	US 4 inch square
4	EU junction box

In a wall mount installation, please use screws that have a 1/4in. (6.3mm) diameter head with a length at least 2 in. (50.8mm).

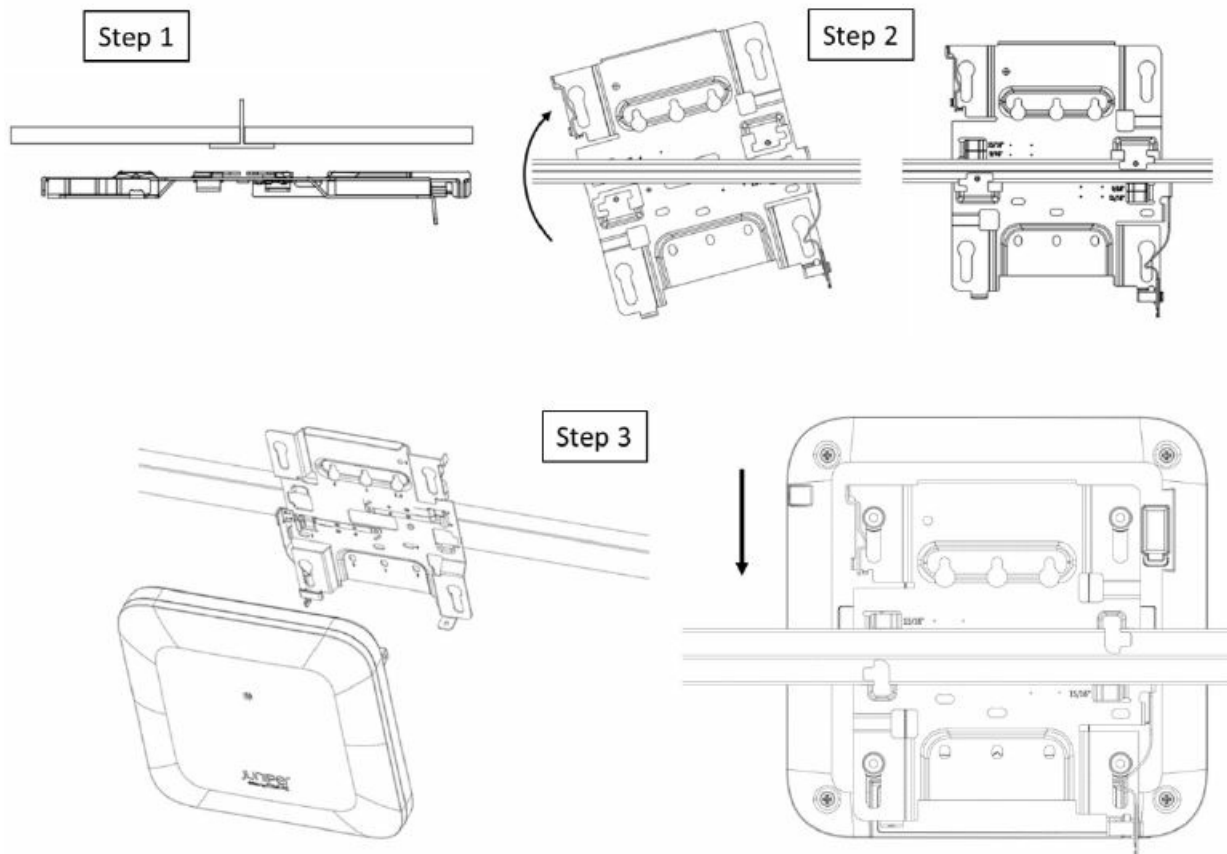
APBR-U that is in the AP24 box includes a set screw and an eyehook.

Mounting to a 9/16 inch or 15/16 inch T-bar

Step1. Mount APBR-U to the t-bar

Step2. Rotate APBR-U to lock to the t-bar

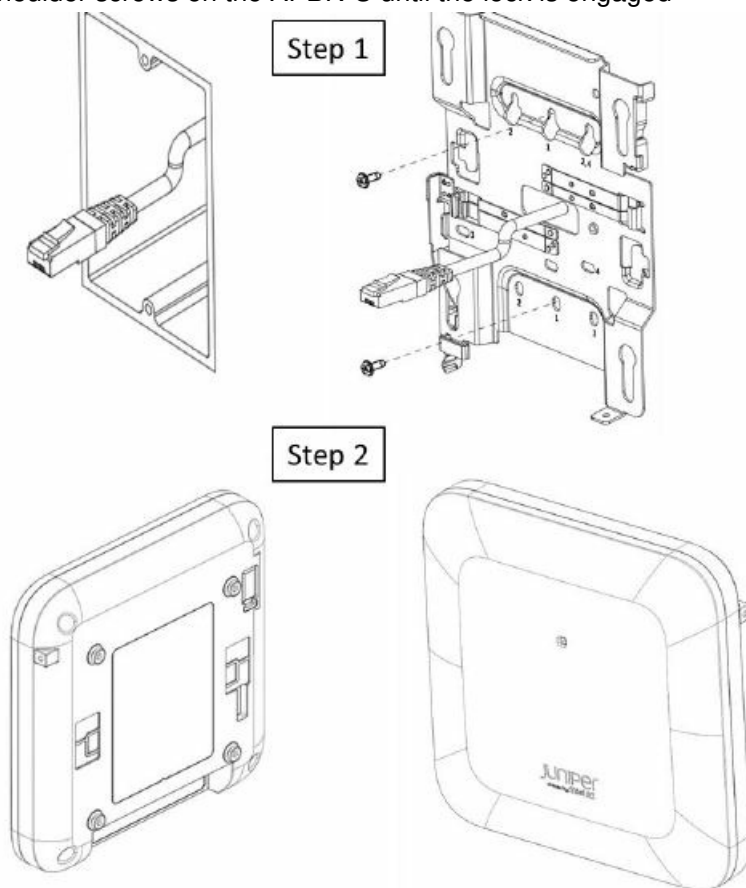
Step3. Slide the AP with shoulder screws on the APBR-U until the lock is engaged



US single gang, 3.5 or 4 inch round junction box

Step 1 Mount APBR-U to the box using two screws and the #1 holes. Make sure Ethernet cable extends thru the bracket.

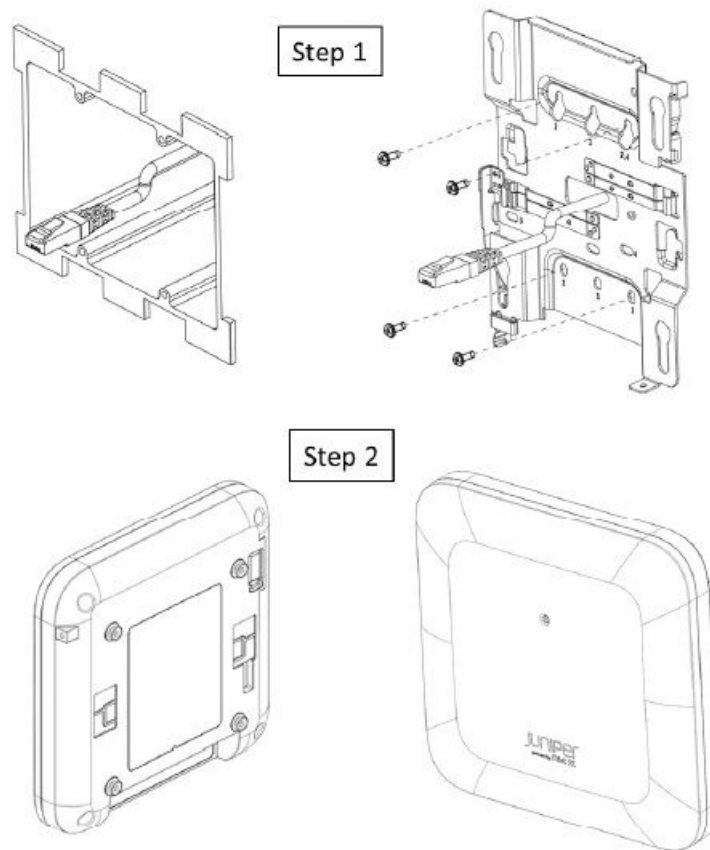
Step 2 Slide the AP with shoulder screws on the APBR-U until the lock is engaged



US double gang junction box

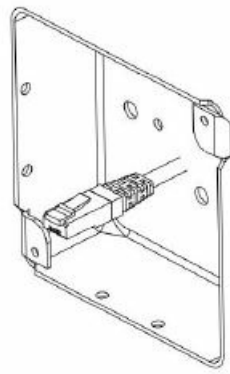
Step 1 Mount APBR-U to the box using two screws and the #2 holes. Make sure Ethernet cable extends thru the bracket.

Step 2 Slide the AP with shoulder screws on the APBR-U until the lock is engaged

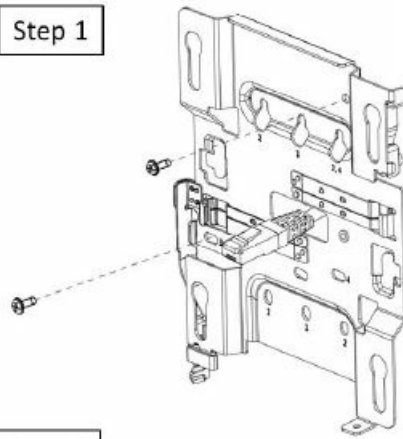


US 4 inch square junction box

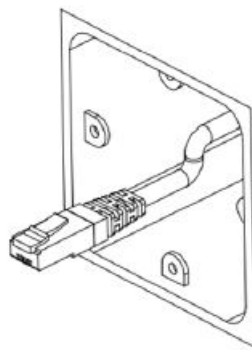
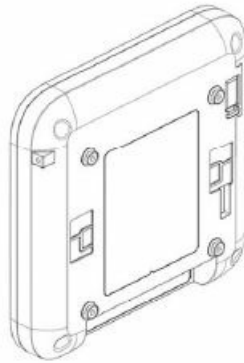
Step 1 Mount APBR-U to the box using two screws and the #3 holes. Make sure Ethernet cable extends thru the bracket. Step 2 Slide the AP with shoulder screws on the APBR-U until the lock is engaged



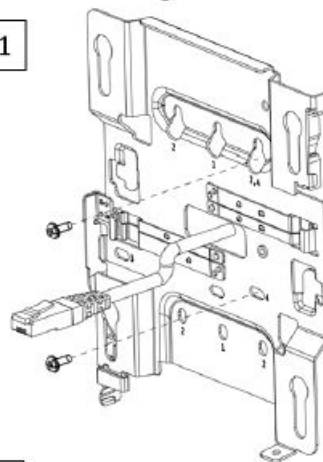
Step 1



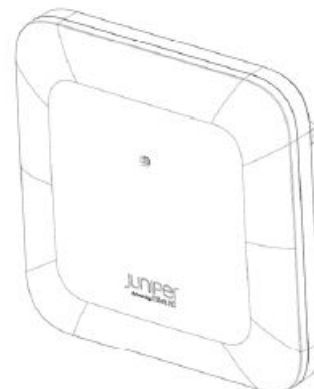
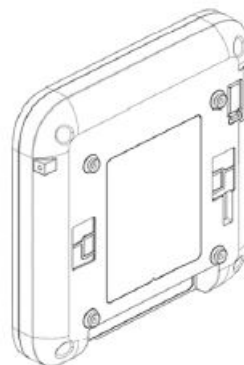
Step 2



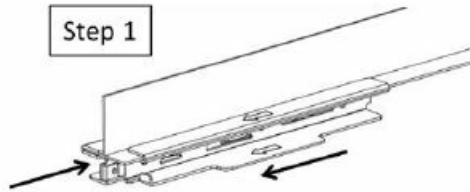
Step 1



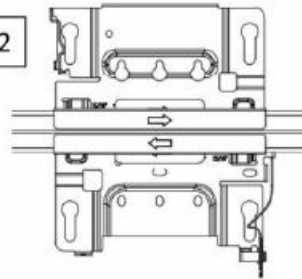
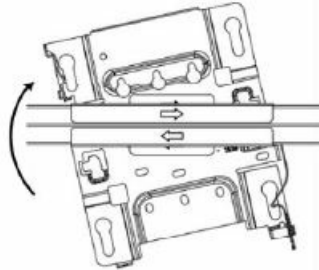
Step 2



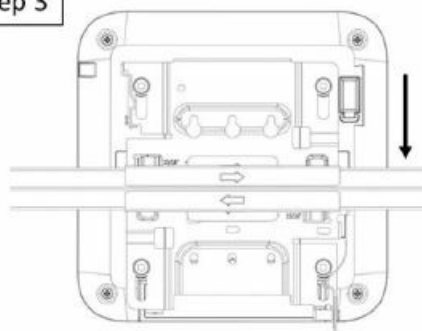
Step 1



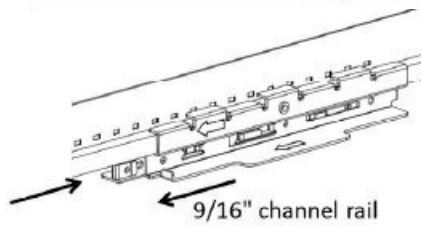
Step 2



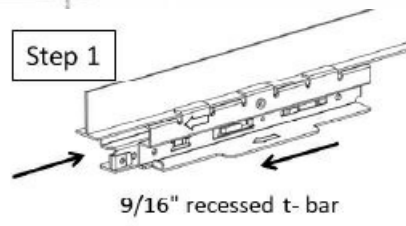
Step 3



Step 1

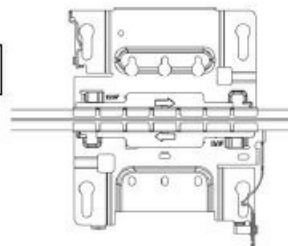
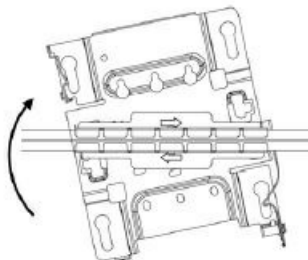


9/16" channel rail

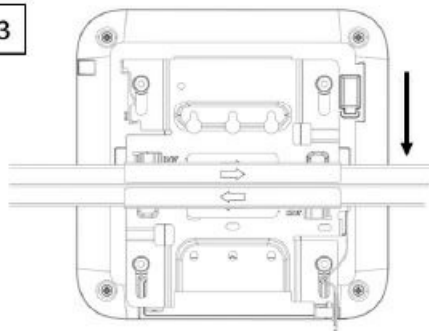


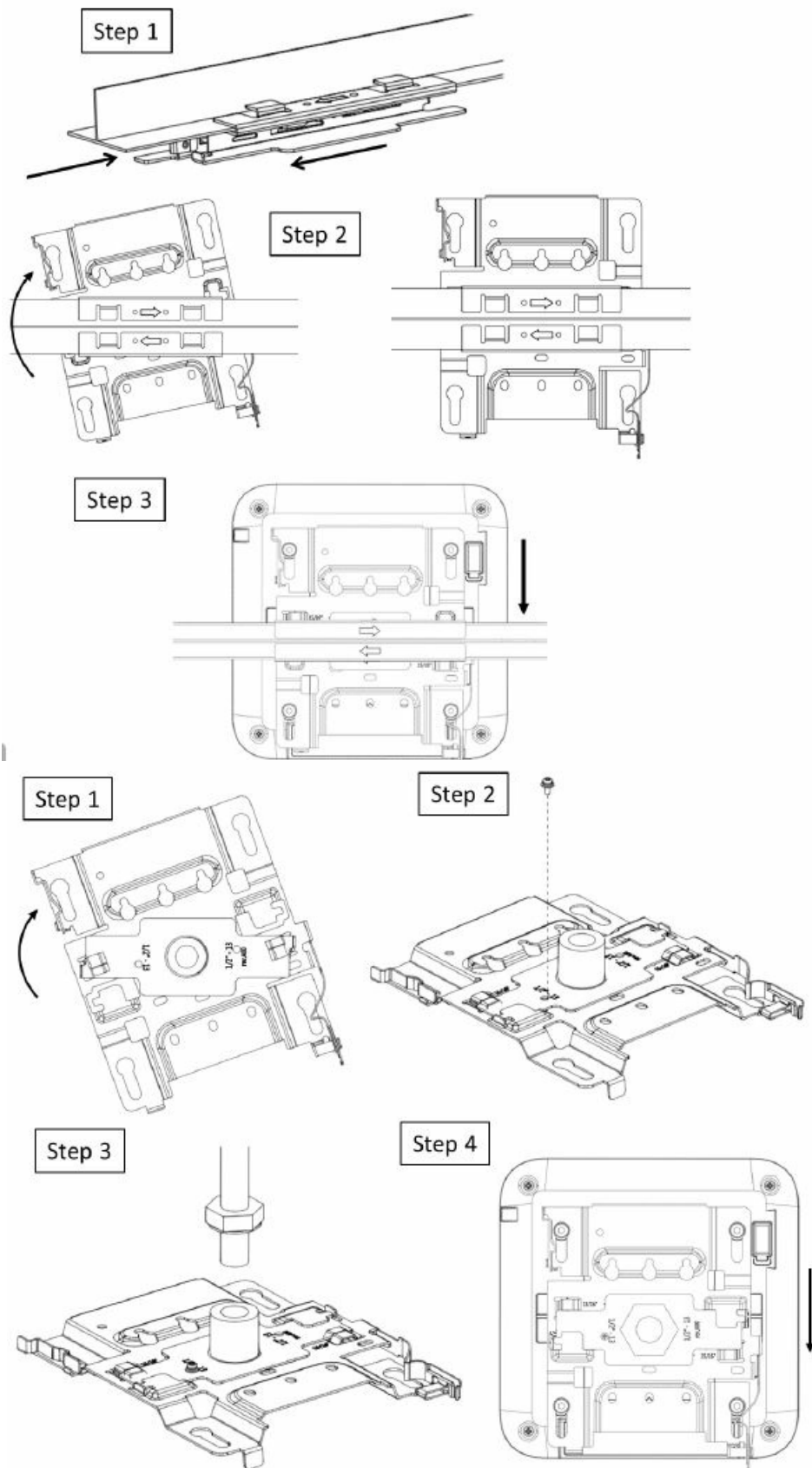
9/16" recessed t-bar

Step 2



Step 3





Documents / Resources



AP24 Hardware Installation Guide

Overview
This document provides information about the AP24 Access Point (AP) and its installation. It includes information about the AP's features, specifications, and installation requirements. This document is intended for network administrators and installers.

© 2013 Juniper Networks, Inc.
All Rights Reserved

Juniper NETWORKS AP24 Access Point [pdf] Installation Guide

AP24 Access Point, AP24, Access Point, Point