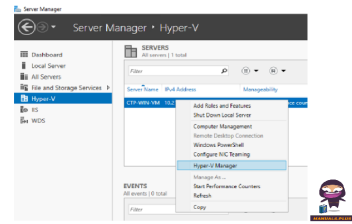


**JUNIPER**  
NETWORKS  
**9.3R1**  
**CTPView**  
**Server**  
**Software**



## Juniper Networks 9.3R1 CTPView Server Software User Guide

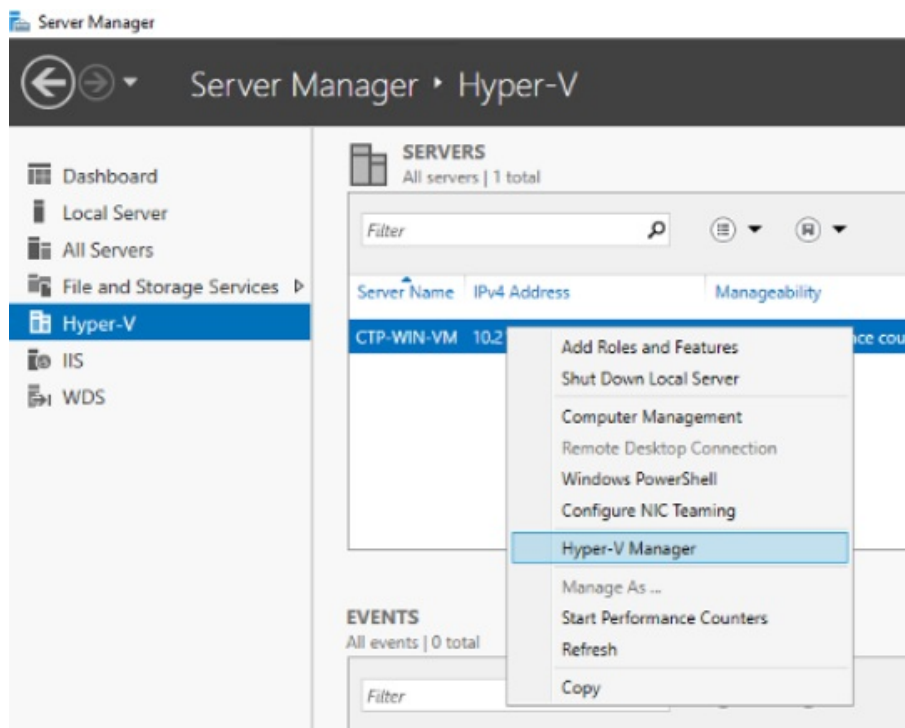
[Home](#) » [JUNIPER NETWORKS](#) » Juniper Networks 9.3R1 CTPView Server Software User Guide 

### Contents

- [1 Juniper Networks 9.3R1 CTPView Server Software](#)
- [2 Required Install files](#)
- [3 CTPView Installation and Maintenance Policy](#)
- [4 Documents / Resources](#)
  - [4.1 References](#)
- [5 Related Posts](#)



**Juniper Networks 9.3R1 CTPView Server Software**



### About This Guide

This release notes accompany Release 9.3R1 of the CTPView software. They describe device documentation and known problems with the software. You can also find these release notes on the Juniper Networks CTP software documentation webpage, which is located at [CTP Series Release Notes](#).

### Release Highlights

The following features or enhancements have been added to CTPView Release 9.3R1.

- You can now host CTPView 9.3R1 Server on RHEL9 or Rocky Linux9 instead of Centos 7.
- SAToP bundles will now interoperate with Cisco devices.

### Resolved Issues in CTPView Release 9.3R1

The following issues have been resolved in CTPView Release 9.3R1.

- Save/Restore CTP configuration feature is not able configure in CTPView [PR 1841562]
- CTP-VIEW issues need to fix in 9.3R1 [PR 1852286]
- CTPVIEW issues need to fix in 9.3R1 [PR 1854729]
- CTPView GUI after connected ctpos node, Performance getting slow in CTPView 9.3R1 build [PR 1857545]
- Network Monitoring is not getting Start in CTPView GUI 9.3R1 build [PR 1857551]
- NTP sync issue & plots are not getting generated in CTPView GUI 9.3R1 build. [PR 1857570]
- Unable to enable 32 KHZ reference output option in node config page in CTPView 9.3R1 [PR 1857571]
- Submitting save node configuration from CTPView 9.3R1 Node maintenance displays empty page. [PR 1857577]
- Radius & Tacacs Authentication failed & MS card CESoPSN bundle not working. [PR 1858914]

### Known Issues in CTPView Release 9.3R1

The following PRs are known issues.

- SSH fails after CTP151 dual upgrade to CTPOS 9.2R1 from CTPView. [PR 1830027]
- Add support for more special characters in CTP View GUI system configuration page for various CTP applications [PR 1847606]
- **NOTE:** You cannot configure PBS in CTPView 9.3R1.

**Required Install files**

It is your responsibility to install either the RHEL9.5 (licensed version) or Rocky Linux 9.5 (open source) OS for hosting CTPView 9.3R1 Server. If you have queries or need further assistance, contact Juniper Networks Technical Assistance Center (JTAC). Following file is provided for installing the CTPView software:

**Table 1:**

File	CTPView Server OS	Filename	Checksum
Software and RHEL9.5 (li censed version) or Rocky Linux 9.5 (open source) O S updates	RHEL9.5 (licensed versio n) or Rocky Linux  9.5 (open source) OS	CTPView-9.3R-1.0.el9.x8  6_64.rpm	924bec9ae64fe2767b42 2 5ffa3e6a0e9

**Recommended System Configuration for Hosting a CTPView Server**

The following are the recommended hardware configuration to setup a CTPView 9.3R1 server:

- RHEL9.5 (licensed version) or Rocky Linux 9.5 (open source) OS
- 1x processor (4 cores)
- 8 GB RAM
- Number of NICs – 2
- 80 GB Disk space

**CTPView Installation and Maintenance Policy**

From the release of CTPView 9.0R1, Juniper Networks has adopted a policy for installation and maintenance of the CTPView server. CTPView is now being distributed as an “Application only” product, in the form of an RPM package. You can now install and maintain the OS (RHEL 9.5 or Rocky Linux 9.5) according to the guidelines described in Installing CTPView 9.3R1 Server Operating System and CTPView Network Management System Software. This administration guide also has the complete installation procedure.

**NOTE:** From the release of CTPView 9.3R1, either RHEL 9.5 (licensed) or Rocky Linux 9.5 (open source) OS should be used to host CTPView server.

**CVEs and Security Vulnerabilities Addressed in CTPView Release 9.3R1**

The following tables list the CVEs and security vulnerabilities that have been addressed in CTPView 9.3R1. For more information about individual CVEs, see <http://web.nvd.nist.gov/view/vuln/search>.

**Table 2: Critical or Important CVEs Included in perl**  
CVE-2023-47038

**Table 3: Critical or Important CVEs Included in emacs**  
CVE-2024-39331

**Table 4: Critical or Important CVEs Included in krb5**  
CVE-2024-3596

**Table 5: Critical or Important CVEs Included in python3**  
CVE-2024-6232

**Table 6: Critical or Important CVEs Included in rhc**  
CVE-2022-3064

**Table 7: Critical or Important CVEs Included in kernel**

CVE-2024-41009	CVE-2024-42244	CVE-2024-50226	CVE-2024-26615	CVE-2024-43854
CVE-2024-44994	CVE-2024-45018	CVE-2024-46695	CVE-2024-49949	CVE-2024-50251
CVE-2024-27399	CVE-2024-38564	CVE-2024-45020	CVE-2024-46697	CVE-2024-47675
CVE-2024-49888	CVE-2024-50099	CVE-2024-50110	CVE-2024-50115	CVE-2024-50124
CVE-2024-50125	CVE-2024-50142	CVE-2024-50148	CVE-2024-50192	CVE-2024-50223
CVE-2024-50255	CVE-2024-50262	CVE-2024-46713	CVE-2024-50208	CVE-2024-50252
CVE-2024-53122	CVE-2024-50154	CVE-2024-50275	CVE-2024-53088	

**Table 8: Critical or Important CVEs Included in net-snmp**

CVE-2022-24805	CVE-2022-24806	CVE-2022-24807	CVE-2022-24808	CVE-2022-24809
CVE-2022-24810				

**Table 9: Critical or Important CVEs Included in pam**  
CVE-2024-10041

**Table 10: Critical or Important CVEs Included in NetworkManager**  
CVE-2024-3661

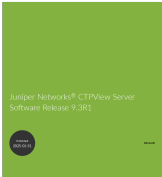
**Table 11: Critical or Important CVEs Included in rsync**  
CVE-2024-12085

**Revision History**




January 2025—Revision 1—CTPView Release 9.3R1

Juniper Networks, the Juniper Networks logo, Juniper, and Junos are registered trademarks of Juniper Networks, Inc. in the United States and other countries. All other trademarks, service marks, registered marks, or registered service marks are the property of their respective owners. Juniper Networks assumes no responsibility for any inaccuracies in this document. Juniper Networks reserves the right to change, modify, transfer, or otherwise revise this publication without notice. Copyright © 2025 Juniper Networks, Inc. All rights reserved.

**Documents / Resources**

	<p><b><a href="#">Juniper Networks 9.3R1 CTPView Server Software</a></b> [pdf] User Guide 9.3R1 CTPView Server Software, 9.3R1, CTPView Server Software, Server Software, Software</p>
---	--

References

-  [NVD - Search and Statistics](#)
-  [CTP Series Documentation | Juniper Networks](#)
-  [Installing CTPView 9.3R1 Server Operating System and CTPView Network Management System Software | CTP | Juniper Networks](#)
- [User Manual](#)

[Manuals+](#), [Privacy Policy](#)

This website is an independent publication and is neither affiliated with nor endorsed by any of the trademark owners. The "Bluetooth®" word mark and logos are registered trademarks owned by Bluetooth SIG, Inc. The "Wi-Fi®" word mark and logos are registered trademarks owned by the Wi-Fi Alliance. Any use of these marks on this website does not imply any affiliation with or endorsement.