



Jungborn ONE 10520523 Wand WC Set Instructions

[Home](#) » [Jungborn](#) » Jungborn ONE 10520523 Wand WC Set Instructions 

Jungborn[®]

ONE

Art.10520523 . Art.10520524

Art.10638060 . Art.10642921

Assembly Instructions Wall-Mounted Toilet

Contents

[1 ONE 10520523 Wand WC Set](#)

[2 Documents / Resources](#)

ONE 10520523 Wand WC Set



Art. 10520523



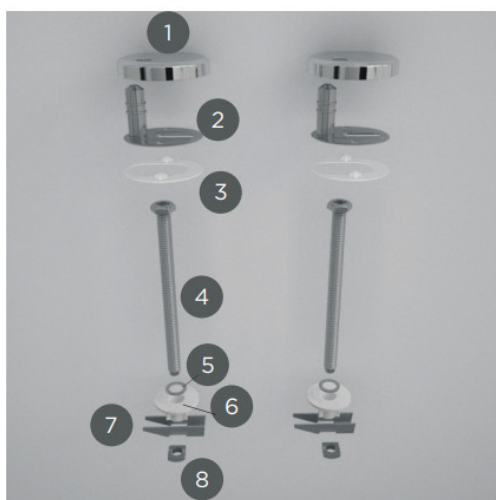
Art. 10520524



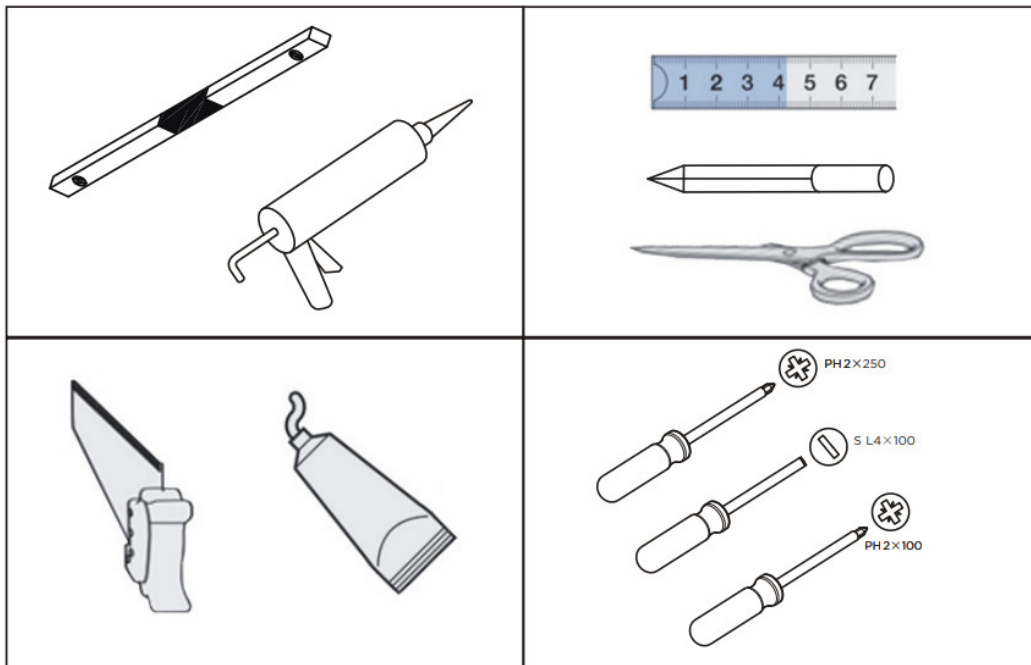
Art. 10638060



Art. 10642921



These accessories are not in the installation kit.

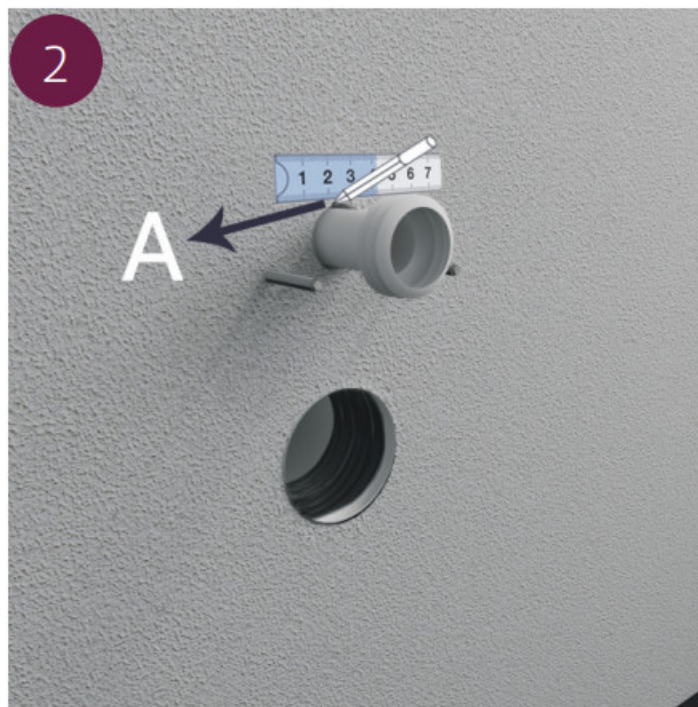


Read the instructions carefully before use and keep them for future reference! For daily cleaning use only commercial bath cleaners. Lime scale and soap residue can be removed with commercial lime remover or vinegar cleaners.

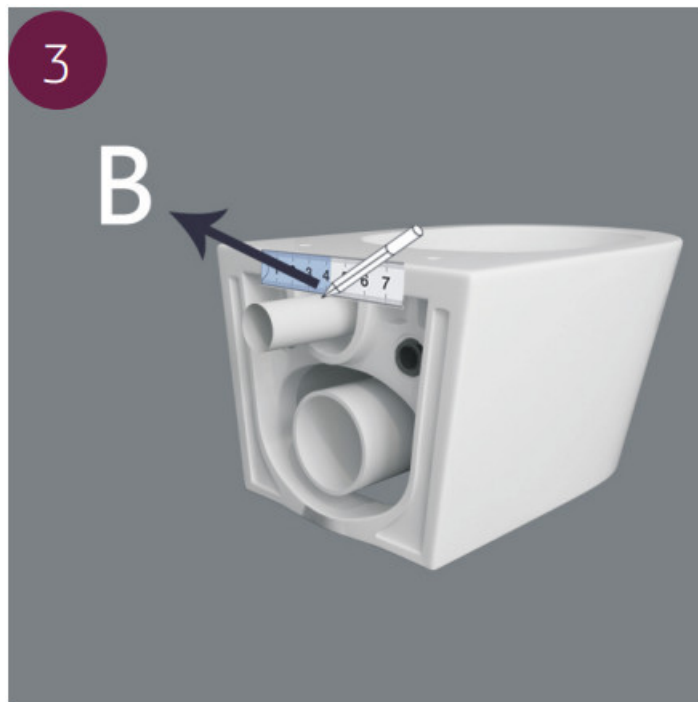
1. This is the toilet with some accessories installed.



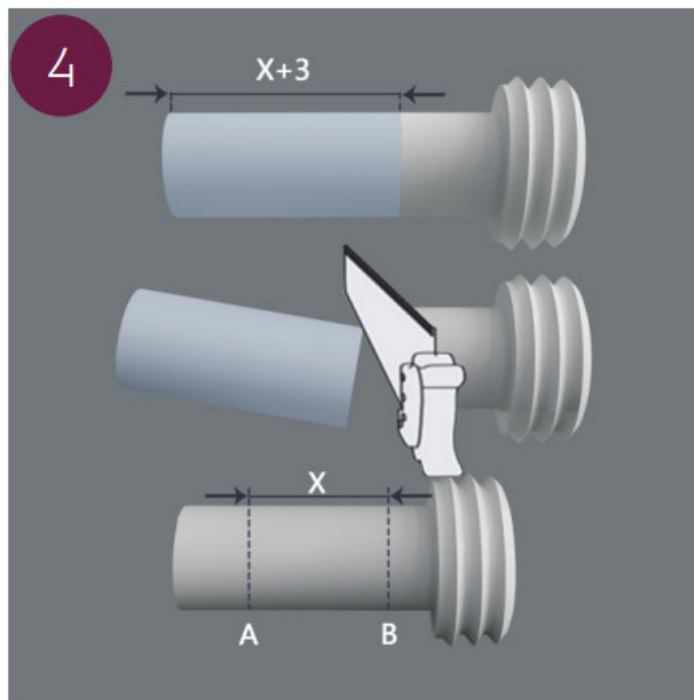
2. Measure the distance of inlet pipe on the wall and mark it with the letter A (inlet pipe is not included)



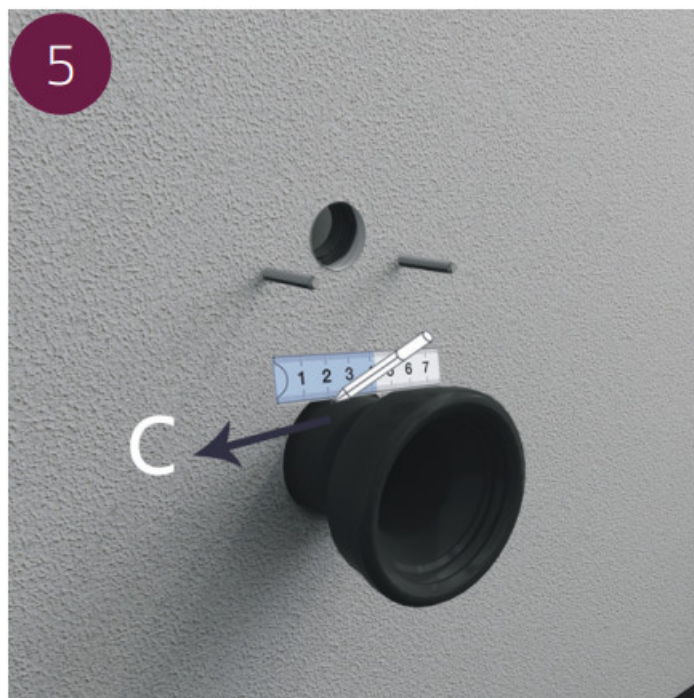
3. Measure the distance of inlet pipe on the toilet and mark it with the letter B



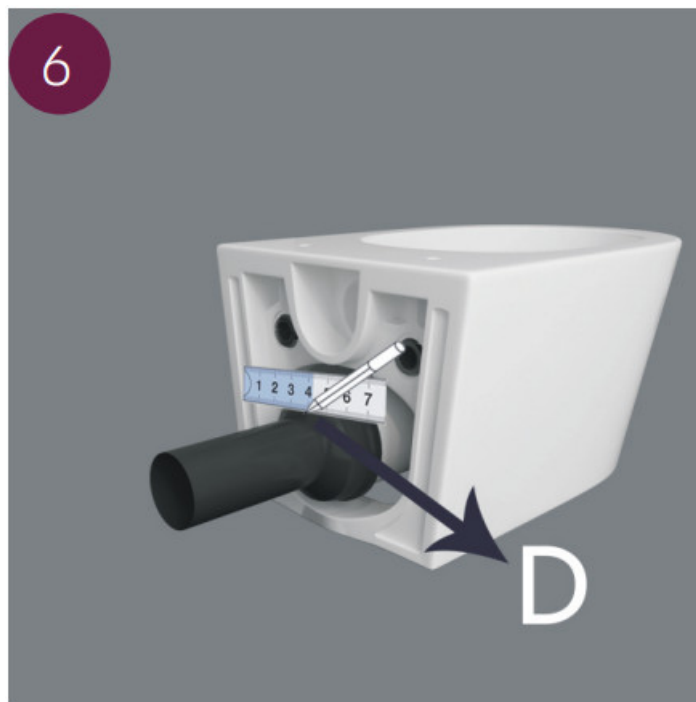
4. Cut the extra material of the inlet pipe



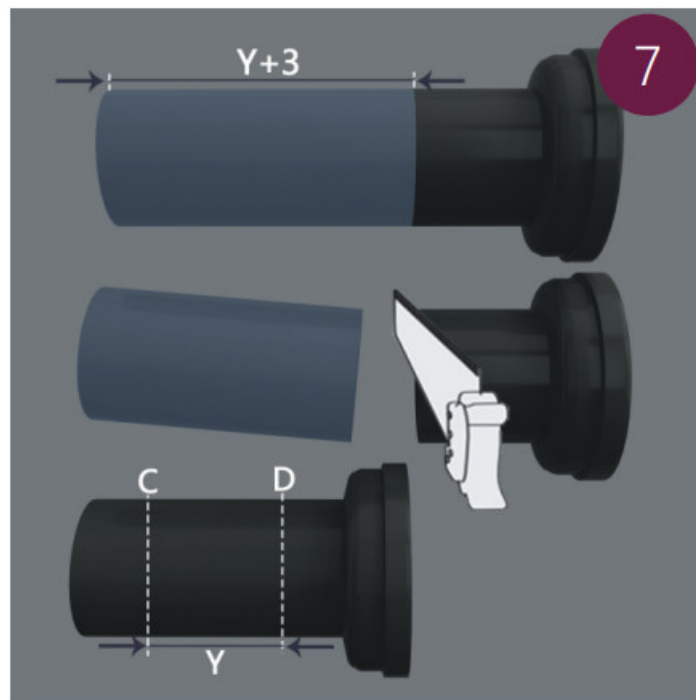
5. Measure the distance of outlet pipe on the wall and mark it with the letter C (outlet pipe is not included)



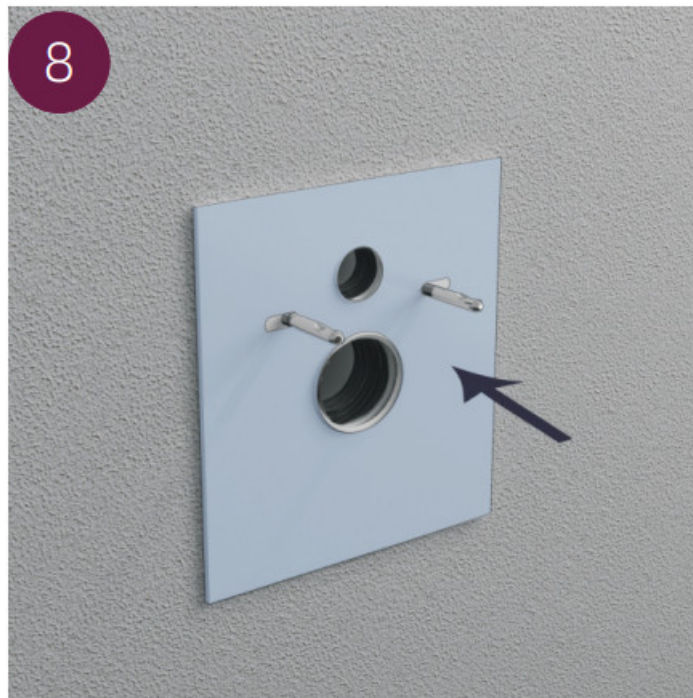
6. Measure the distance of outlet pipe on the toilet and mark it with the letter D



7. Cut the extra material of the outlet pipe



8. Hang the soundproofing pad on the wall(not included)



9. Hang the toilet on the wall



10. Draw the line on the soundproofing pad based on the shape of the toilet



11. Take the toilet off the wall



12. Take the soundproofing pad off the wall



13. Cut the soundproofing pad along the line



14. Hang the soundproofing pad on the wall



15. Apply the lubricating oil to the seal rings inside the wall for easier installation



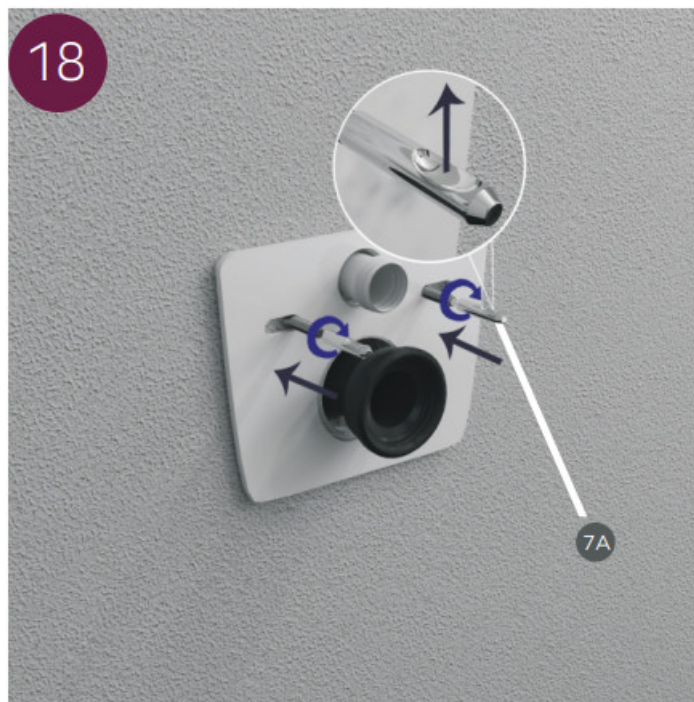
16. Put the pipes into the holes on the wall



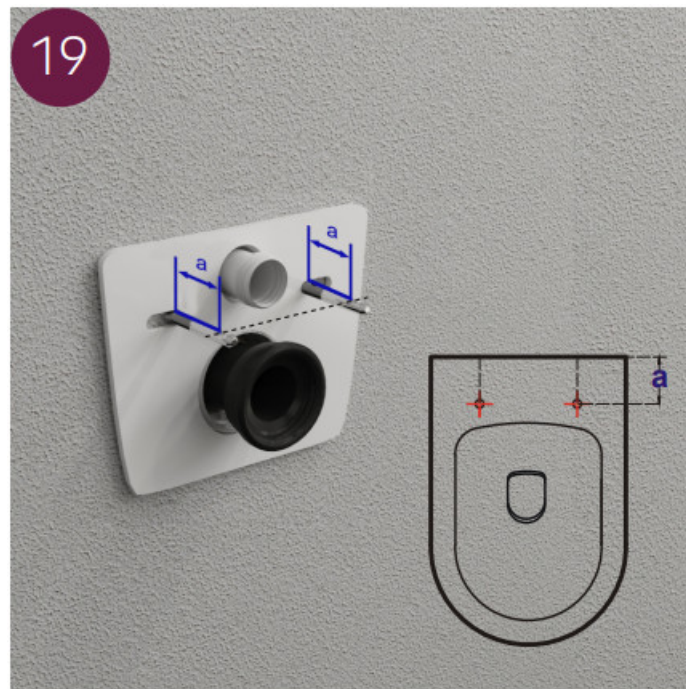
17. Apply the lubricating oil to the outside of the seal ring on the inlet pipe and the inside of the seal ring on the outlet pipe for easier installation



18. Put 7A into the screw on the wall and rotate it until the notch of the bolts 7A is pointing upwards.



19. Make sure size “a” on the toilet is the same as size “a” on the screw



20. Slide the toilet on the bolts 7A.



21. Rotate the 5A through the seat cover fitting hole with L-shaped screw 6A.



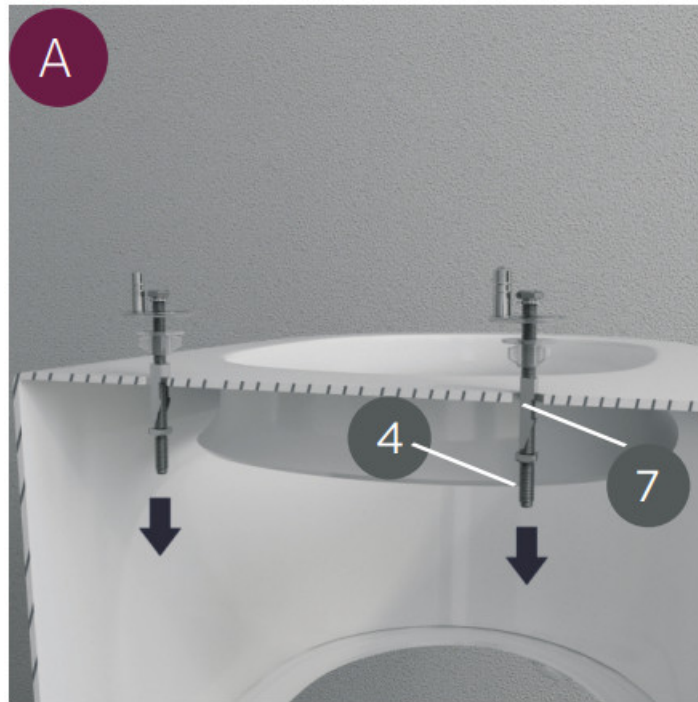
22. Add sealant to the gap between the toilet and the wall



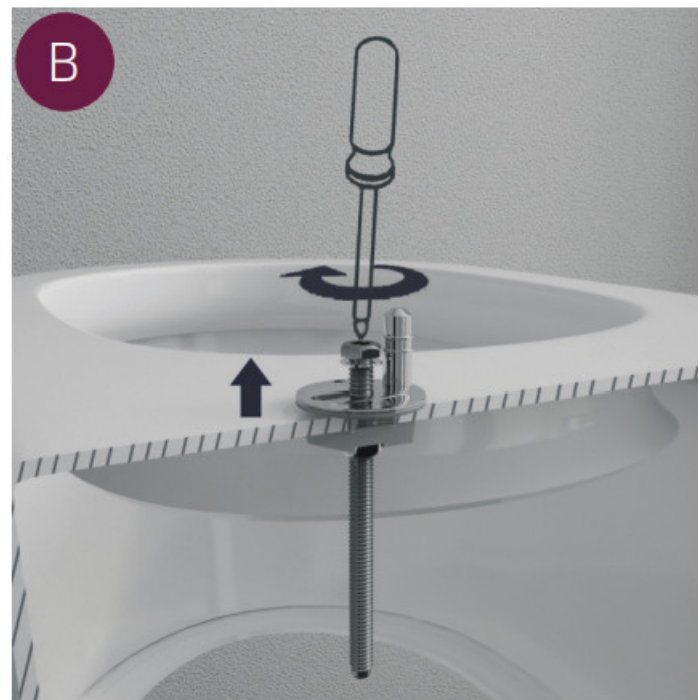
Assembly instructions WC seat



A. Adjust the folding pin (7) and bolt (4) to the parallel direction, then plug them into the designated holes on the toilet.



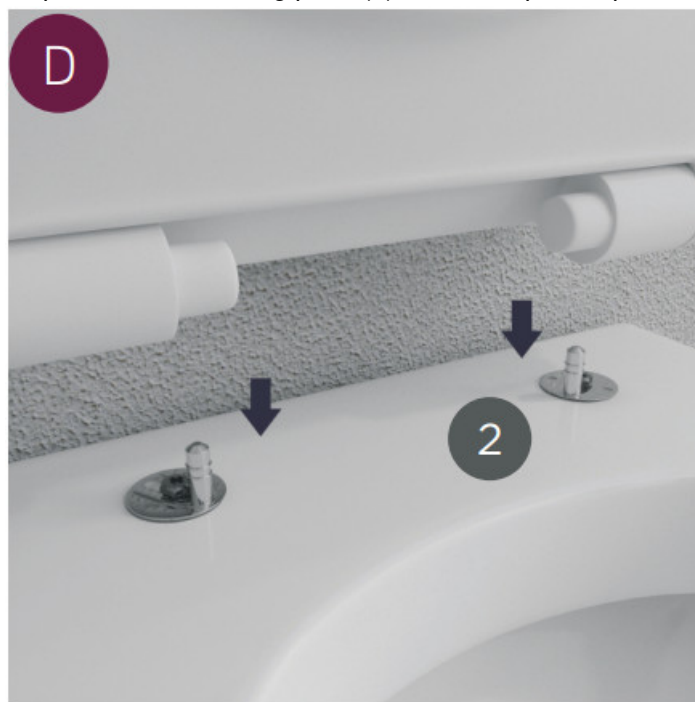
B. Tighten the bolt.



C. Screw the stainless steel screws (4) to the mounting plate (2) so that the mounting plate can still move easily.



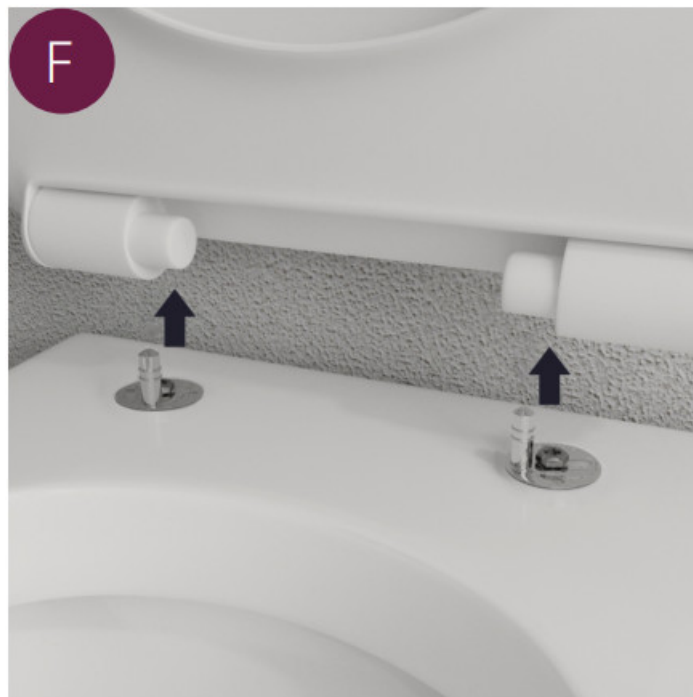
D. Push the WC seat onto the pins of the mounting plate (2) until it snaps into position.



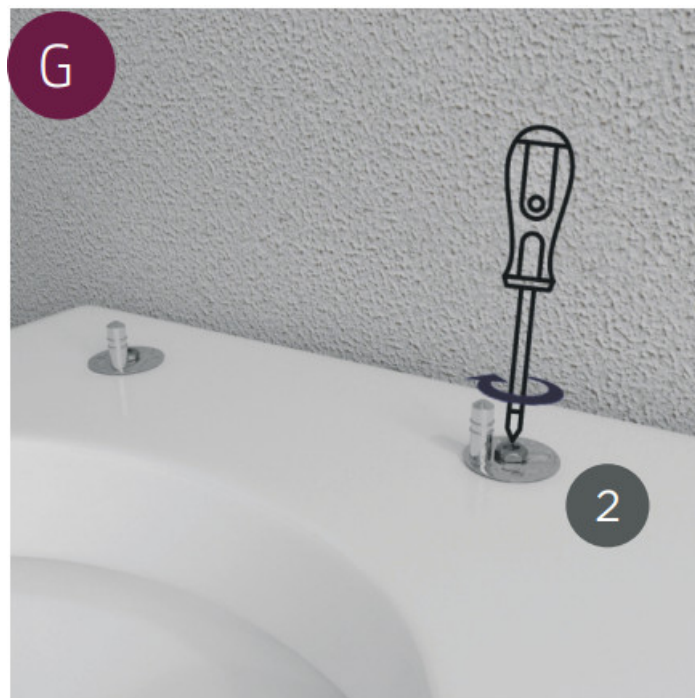
E. Align the WC seat on the toilet.



F. Align the WC vertically towards the top. Next, pull the seat up vertically to remove it.



G. Now, screw the mounting plates (2) tight.

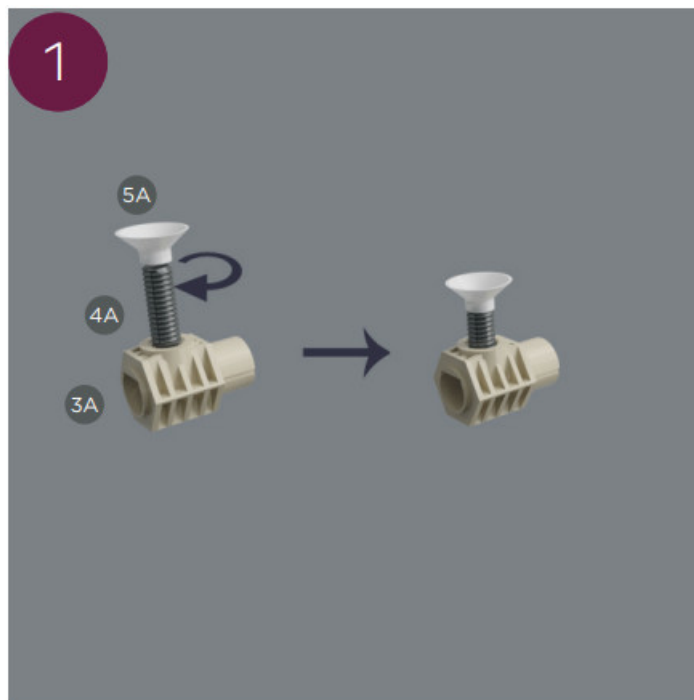


H. Now, slide the cover cap (1) onto the mounting plate (2) before pushing the toilet seat back onto the pins so that it snaps into place.

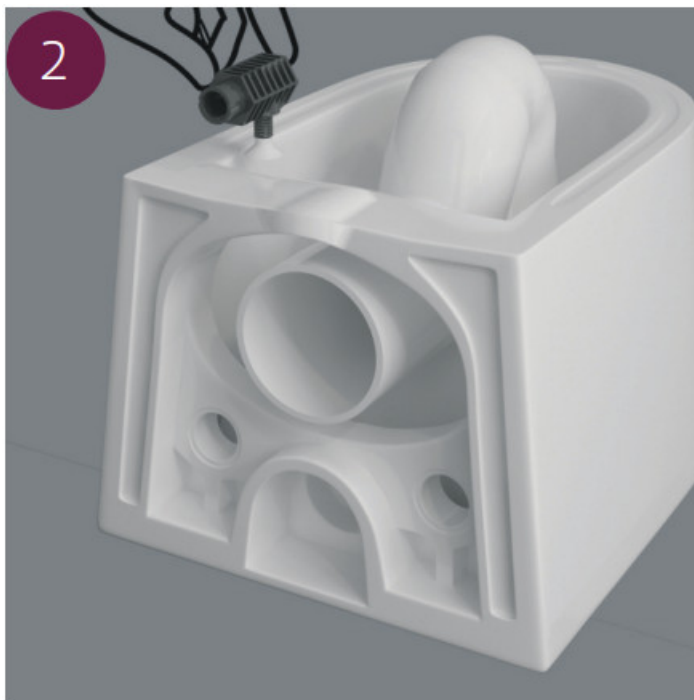


The following steps are for changing wall mounting components

1. Put 5A into 4A and rotate 5A until they are tight enough, then put 4A&5A into 3A and rotate them half way(Installed already)



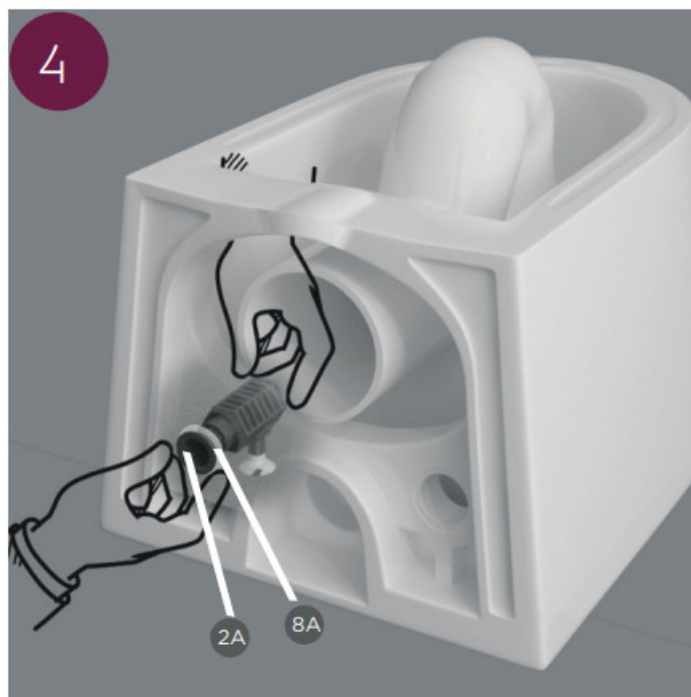
2. Place 3A&4A&5A into the hole from the bottom of the toilet (Installed already)



3. Put 2A&8A into the hole from outside (Installed already)



4. Rotate 2A&8A into the hole for around a half distance (Installed already)



5. Connect 2A&8A and 3A&4A&5A with 1A (Installed already)



HORNBACH Baumarkt AG,
Hornbachstrasse 11,
D76879 Bornheim
www.hornbach.com

Documents / Resources

	<p>Jungborn ONE 10520523 Wand WC Set [pdf] Instructions ONE 10520523 Wand WC Set, ONE 10520523, Wand c, Wand WC Set</p>
--	---