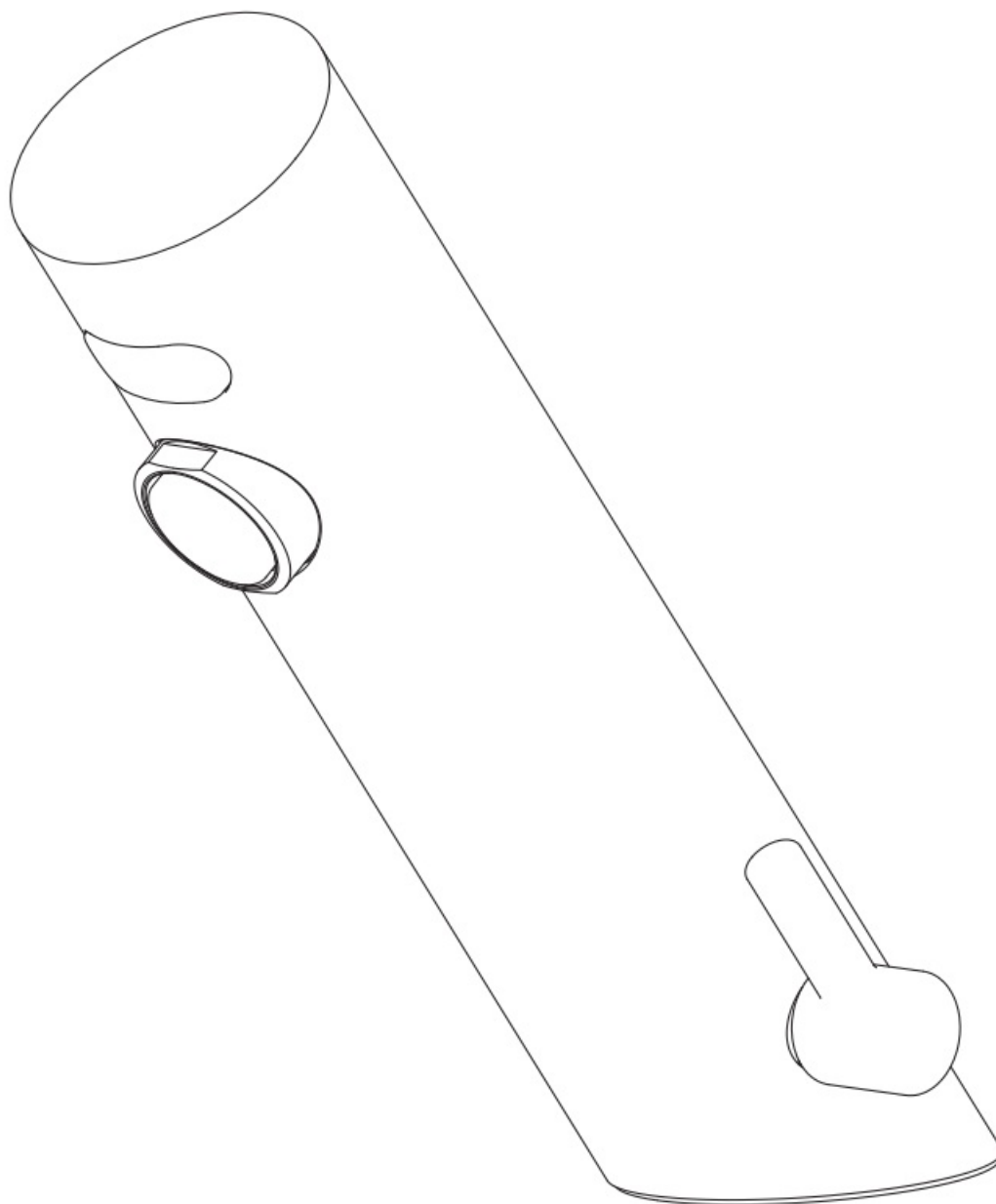


Jungborn 10573812 Sensor Fitting LAMBDA Chrome Glossy Instruction Manual

[Home](#) » [Jungborn](#) » Jungborn 10573812 Sensor Fitting LAMBDA Chrome Glossy Instruction Manual 

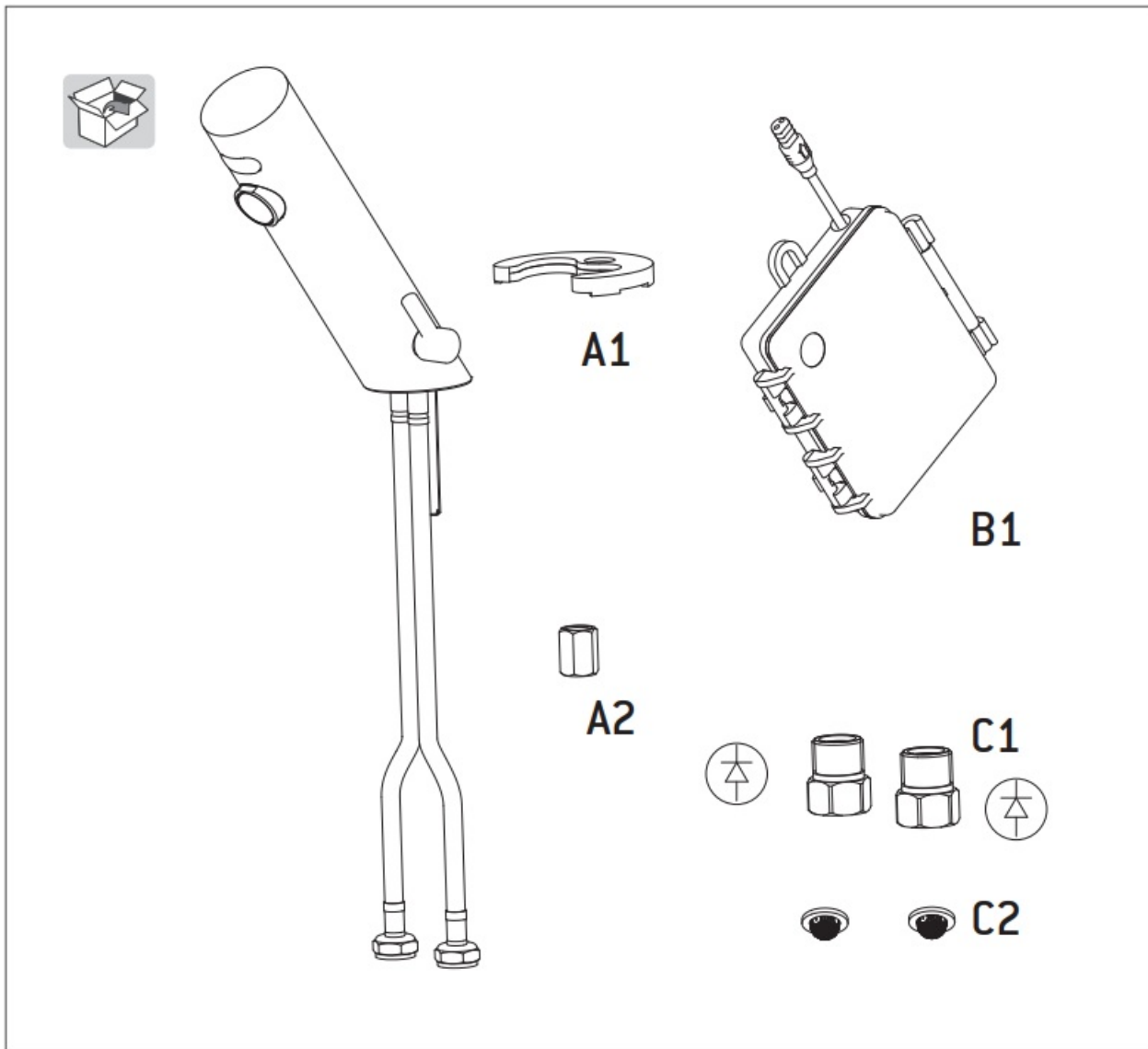
Jungborn 10573812 Sensor Fitting LAMBDA Chrome Glossy



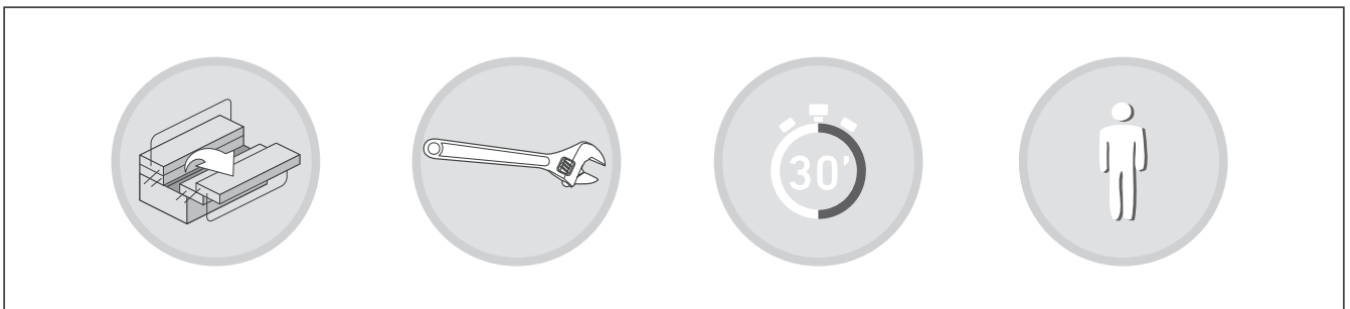
Contents

- [1 Box Content](#)
- [2 Tools Required](#)
- [3 Installation Instructions](#)
 - [3.1 USE/MAINTENANCE](#)
- [4 Safety Precautions](#)
- [5 Documents / Resources](#)
 - [5.1 References](#)
- [6 Related Posts](#)

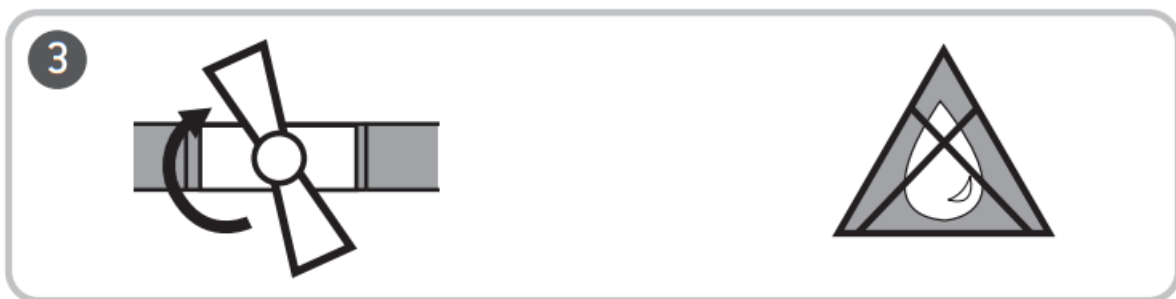
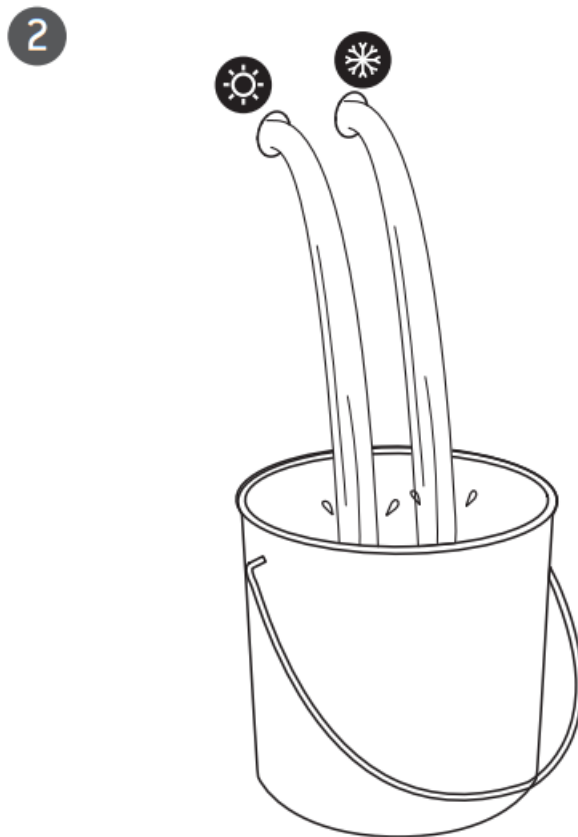
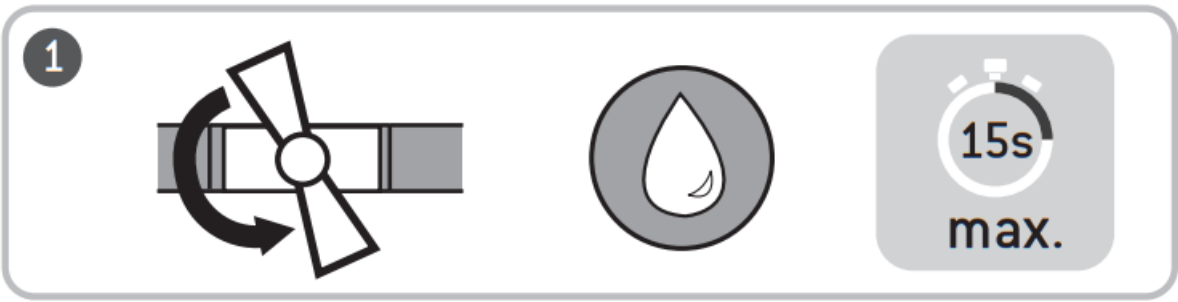
Box Content

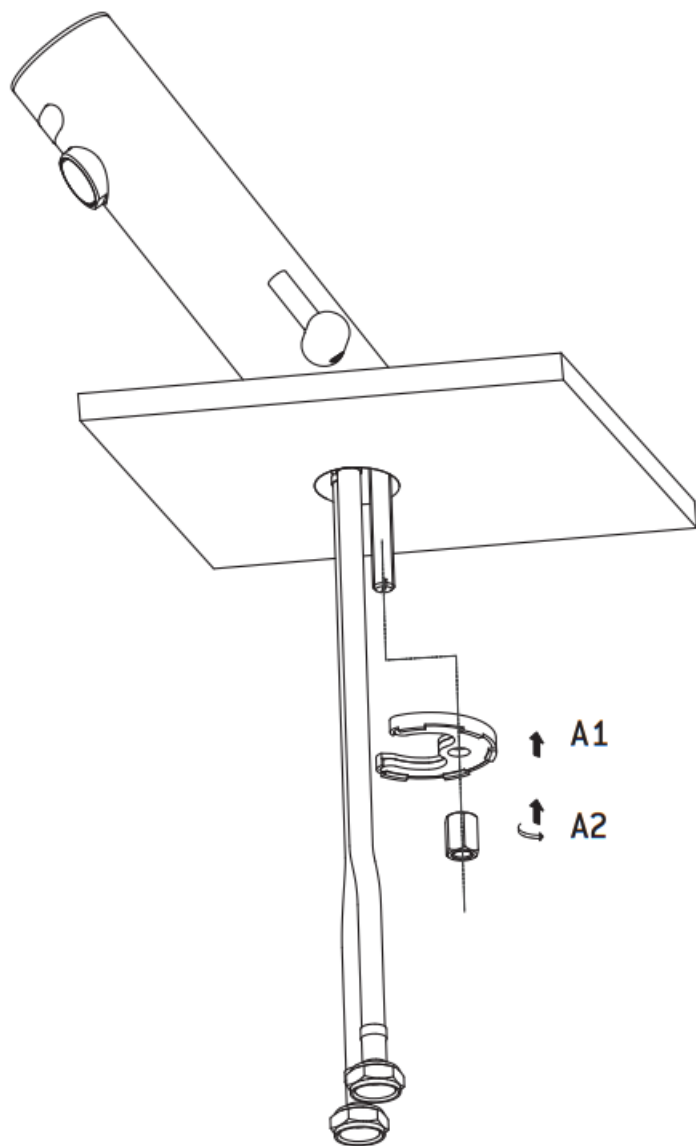


Tools Required



Installation Instructions

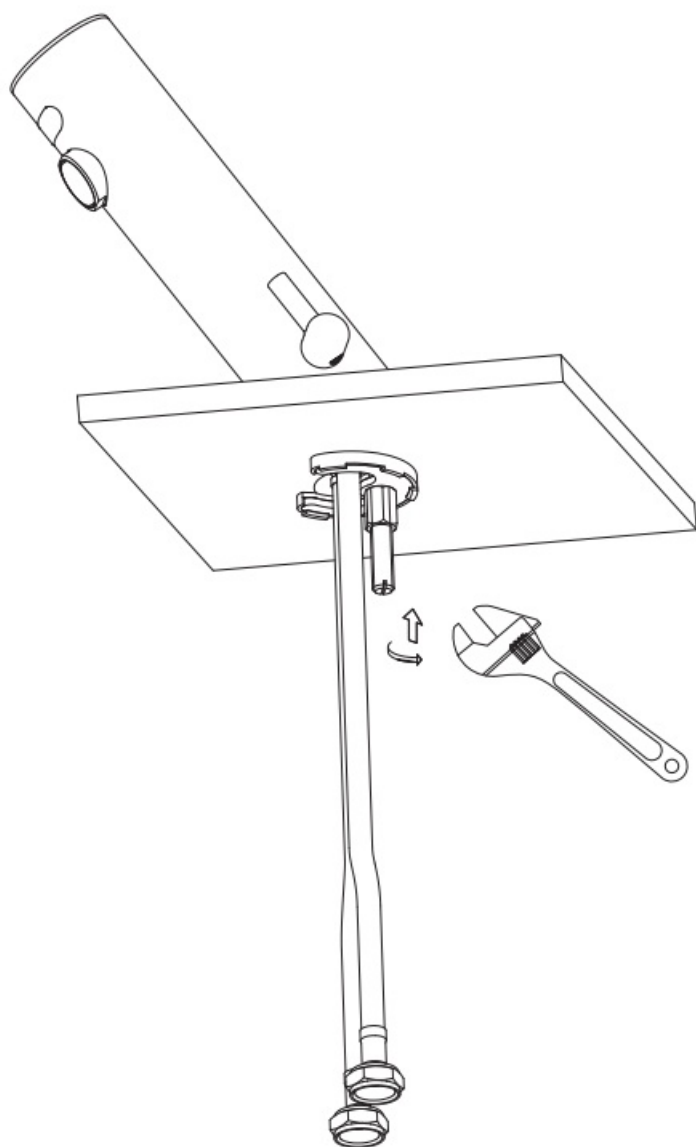


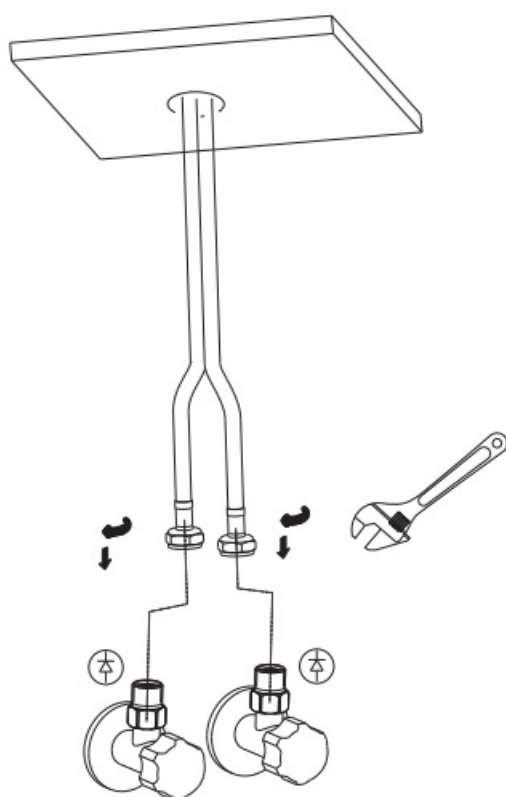
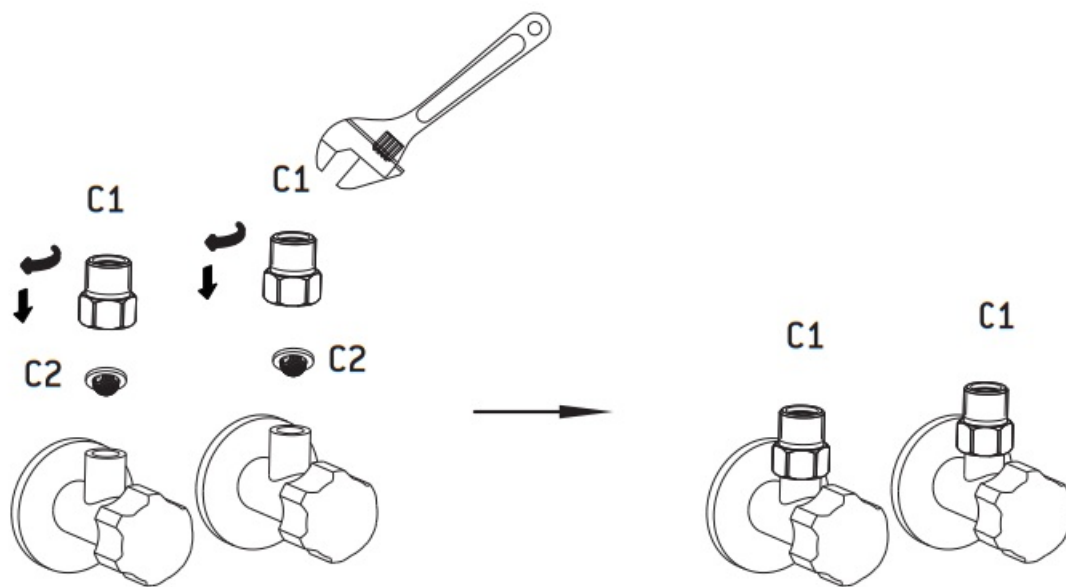


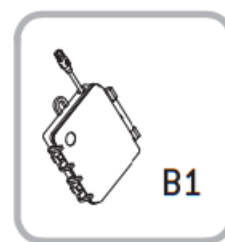
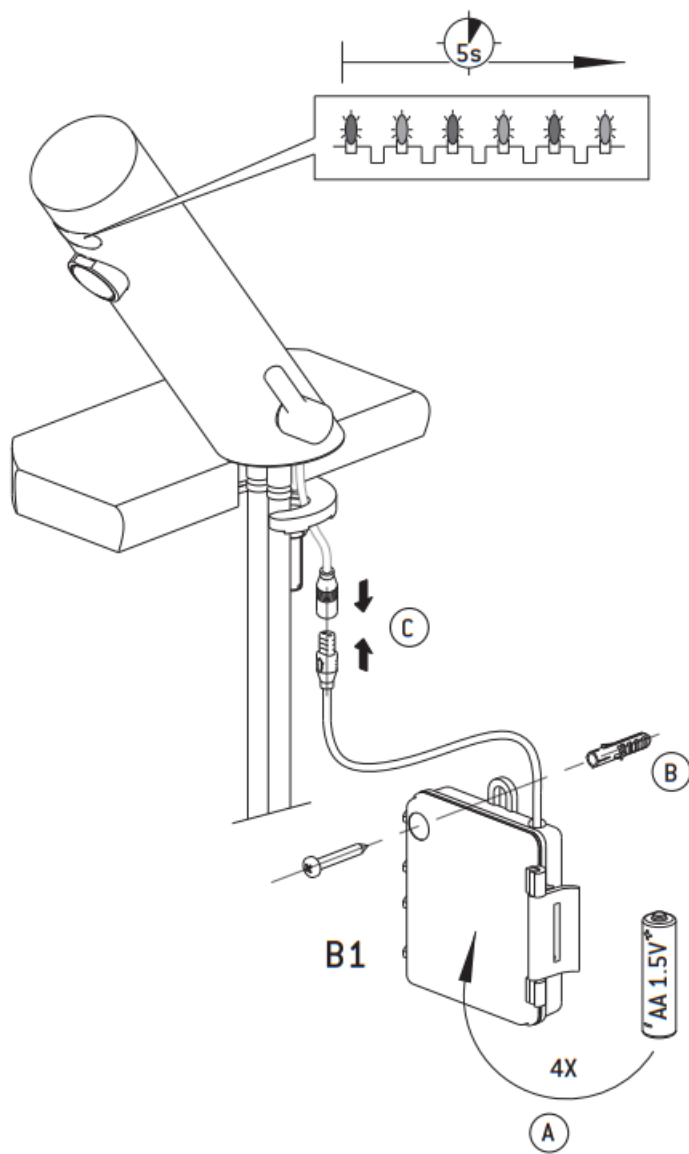
A1



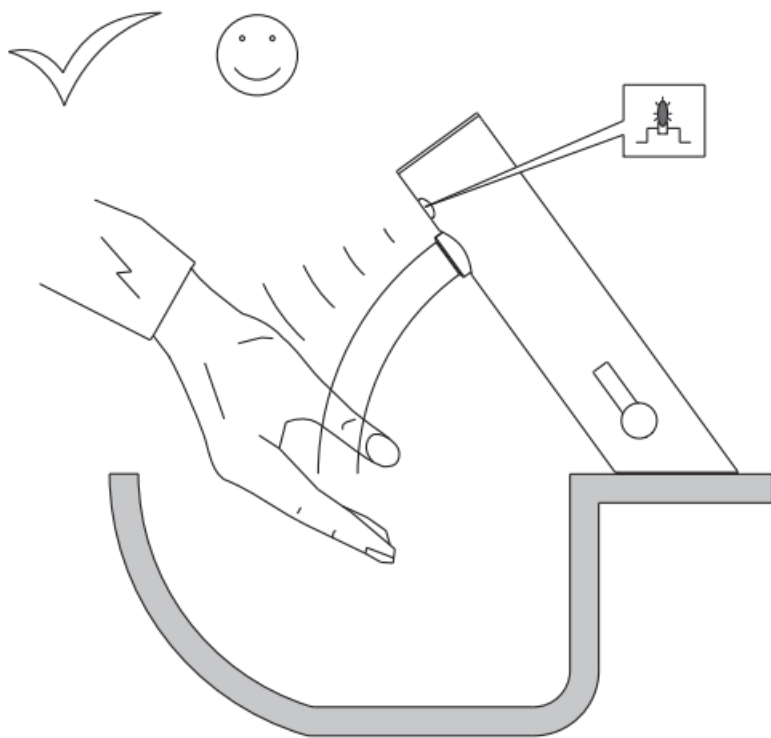
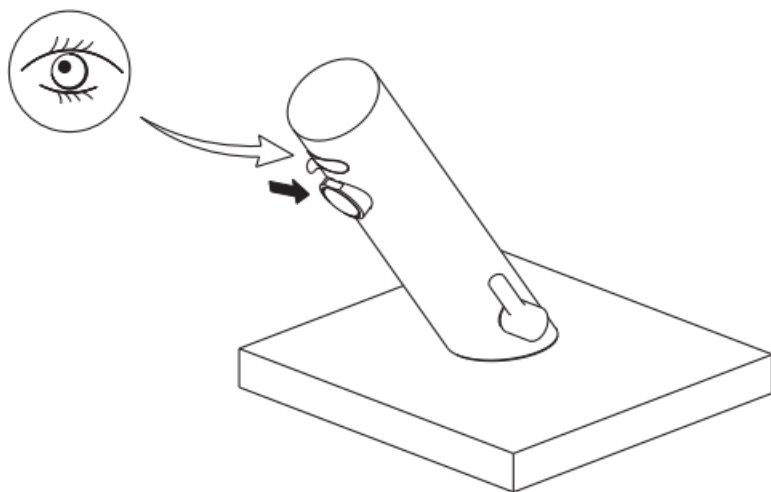
A2

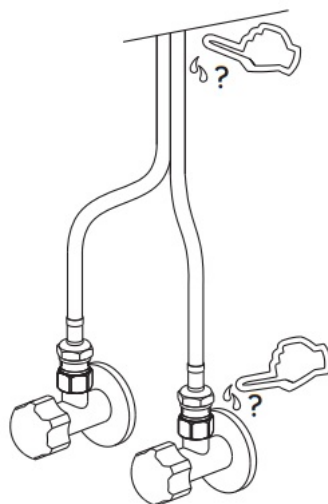
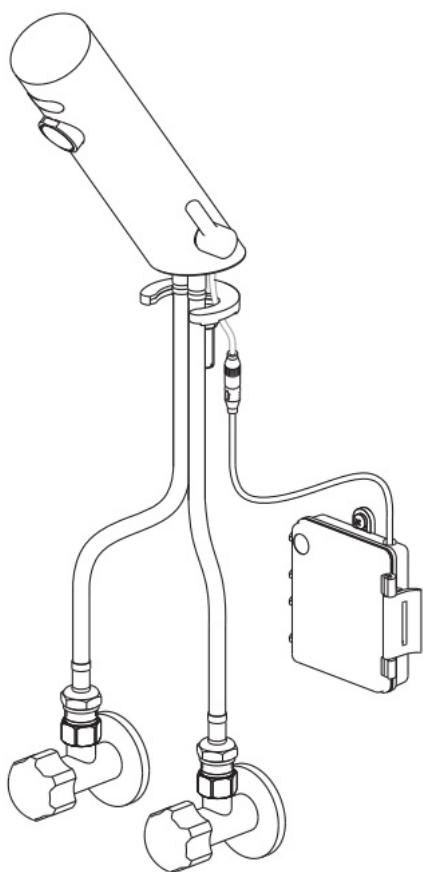


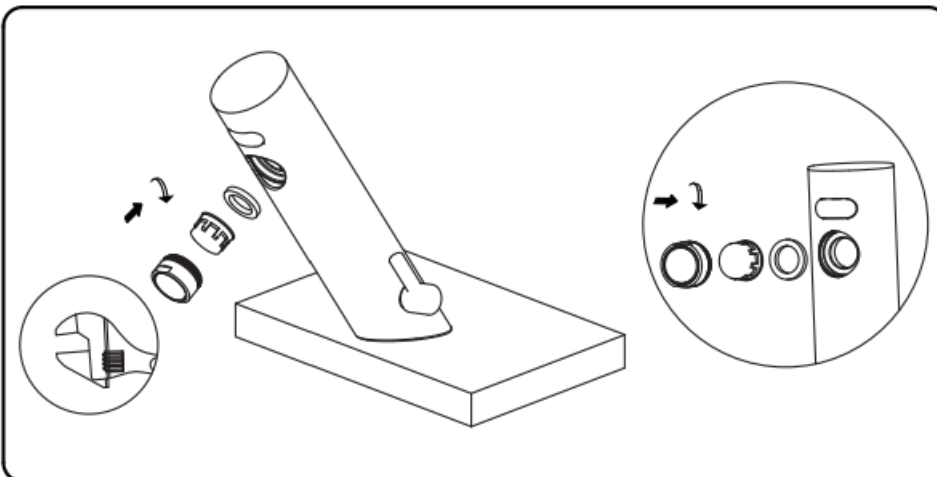
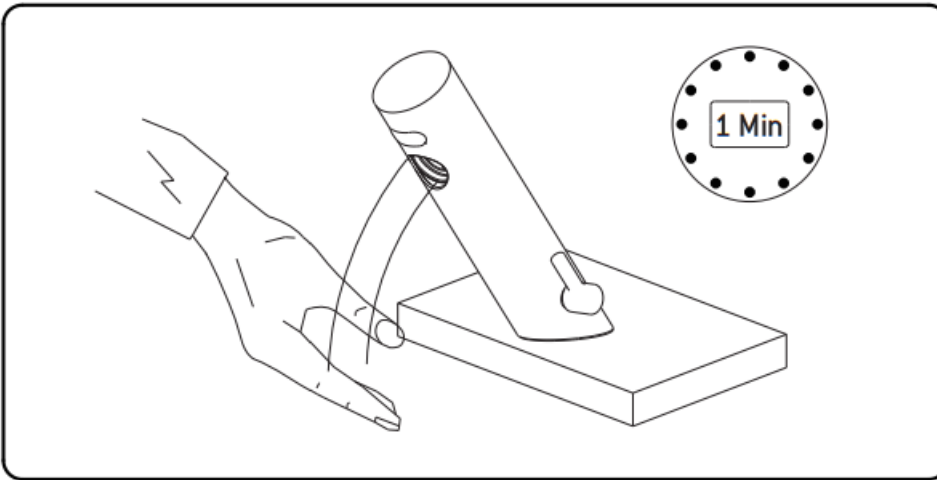
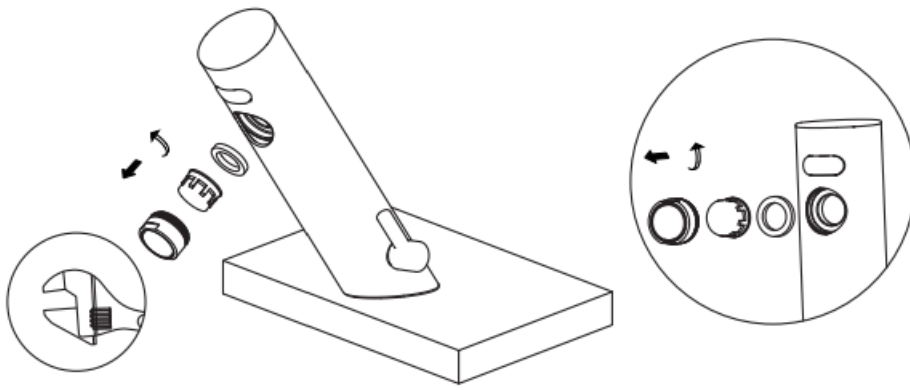


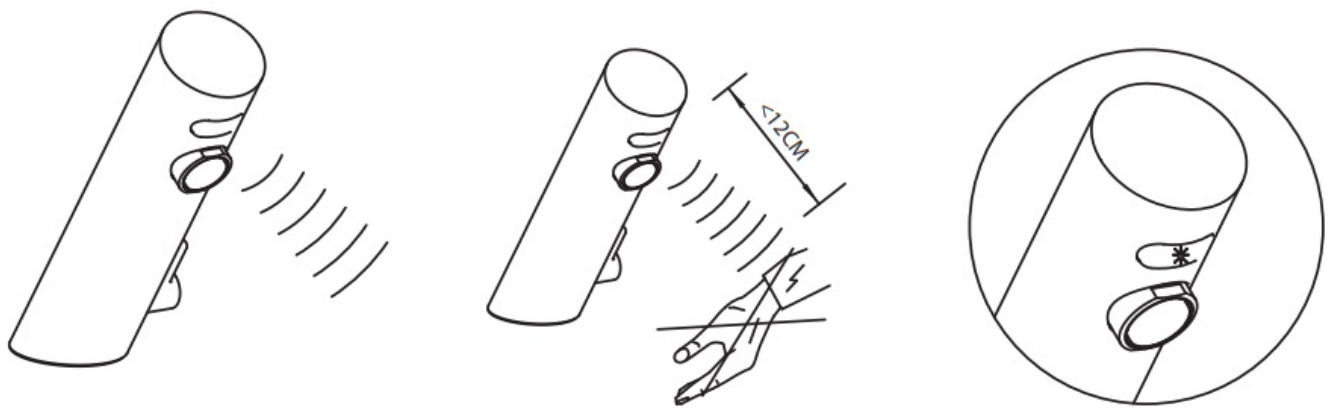
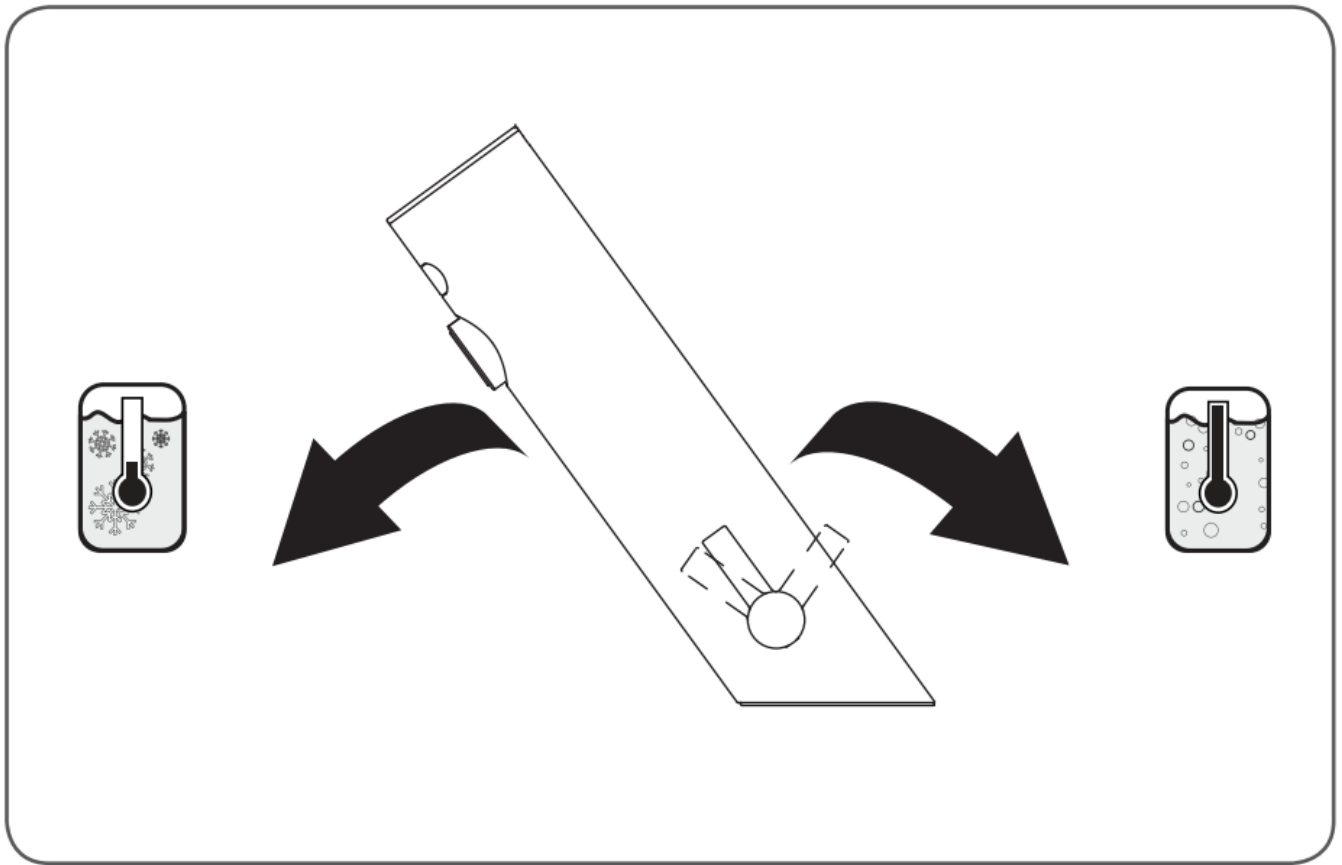


The LED flashes red and green three times.

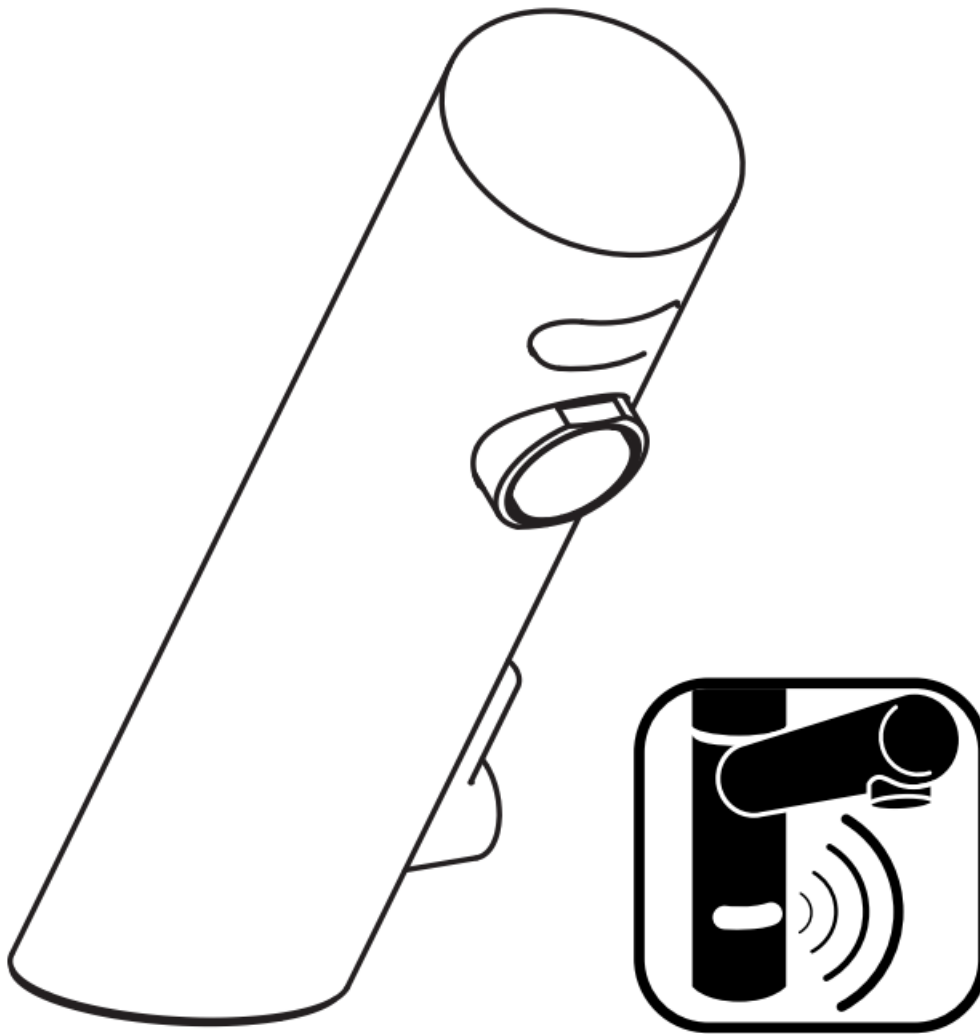








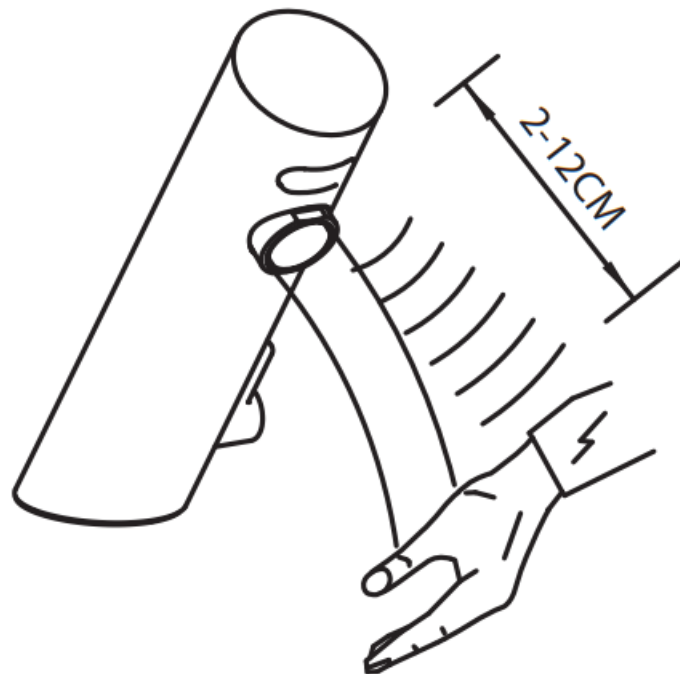
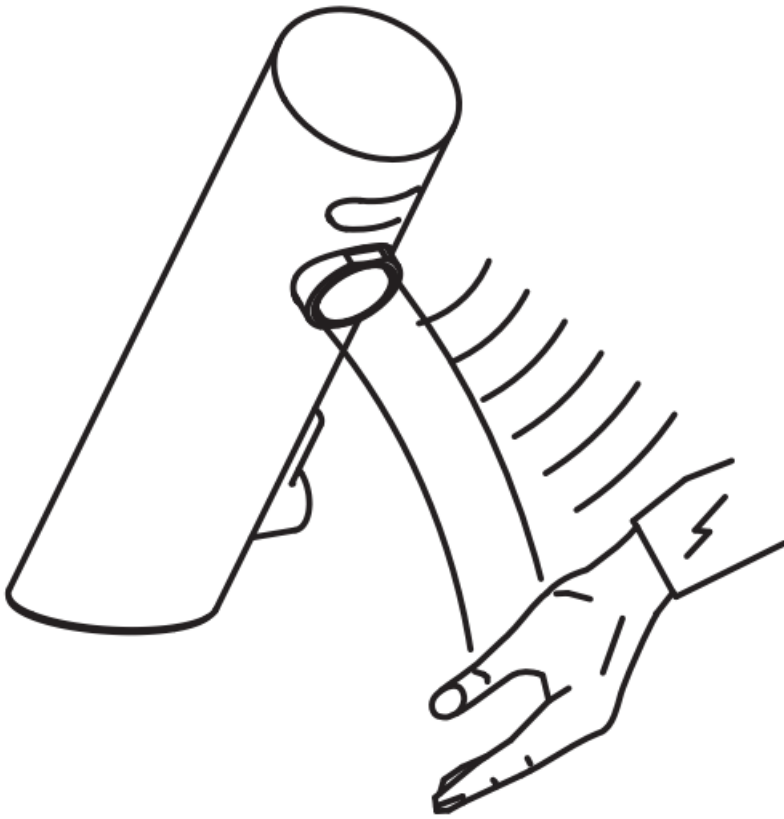
In use



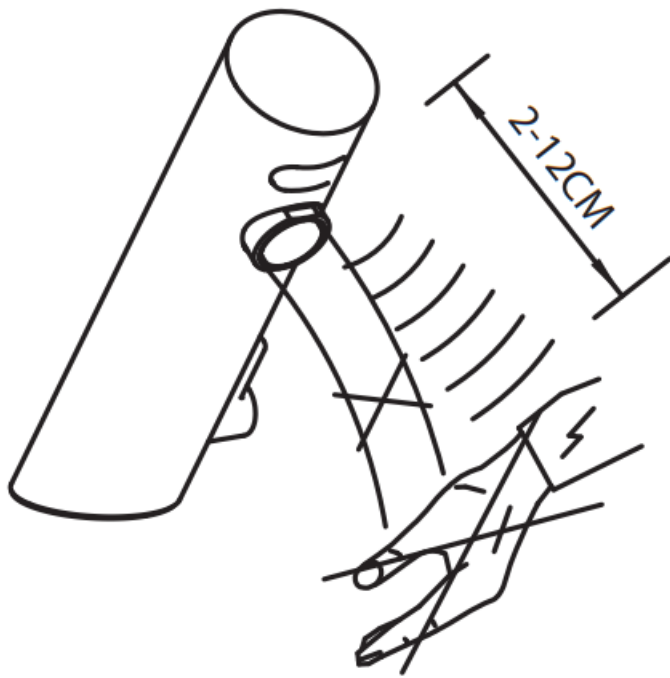
The faucet is ready to use when the LED stops flashing

- Remove all objects from the sensor area
- Insert 4 x 1.5V AA batteries/type AA-LR6)
- The LED flashes several times

Water intake without contact



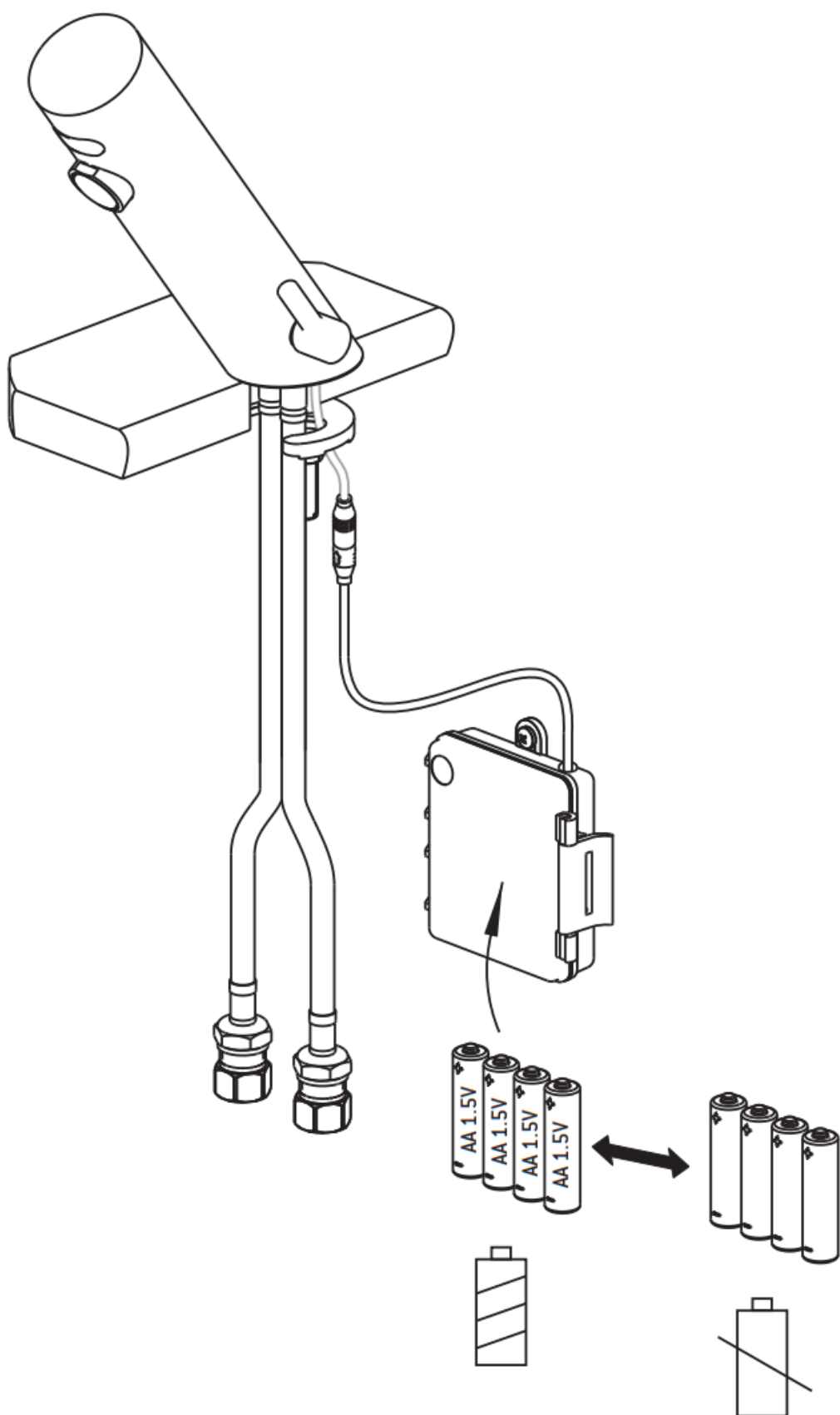
- Hand in detection field of the sensor (2-12cm) -Water starts flowing

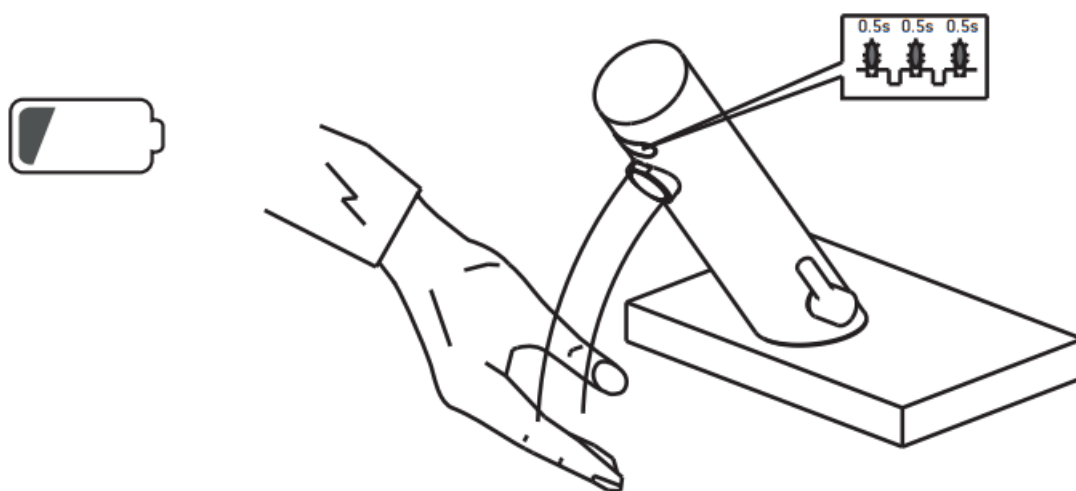


If you remove your hand from the sensor area, the water flow stops after 1 second.

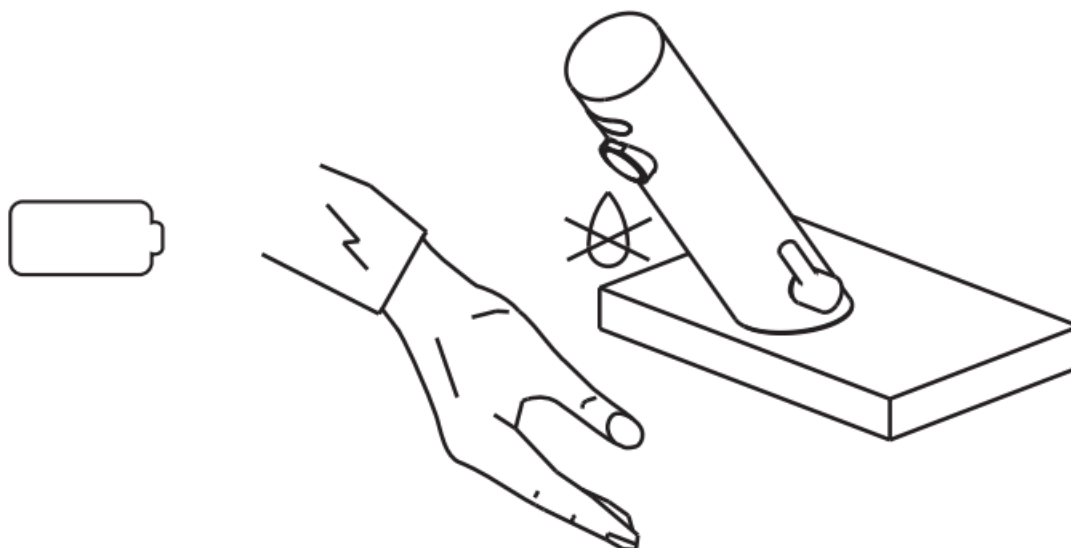


Battery replacement





Battery is almost empty (LED flashes)



Problem

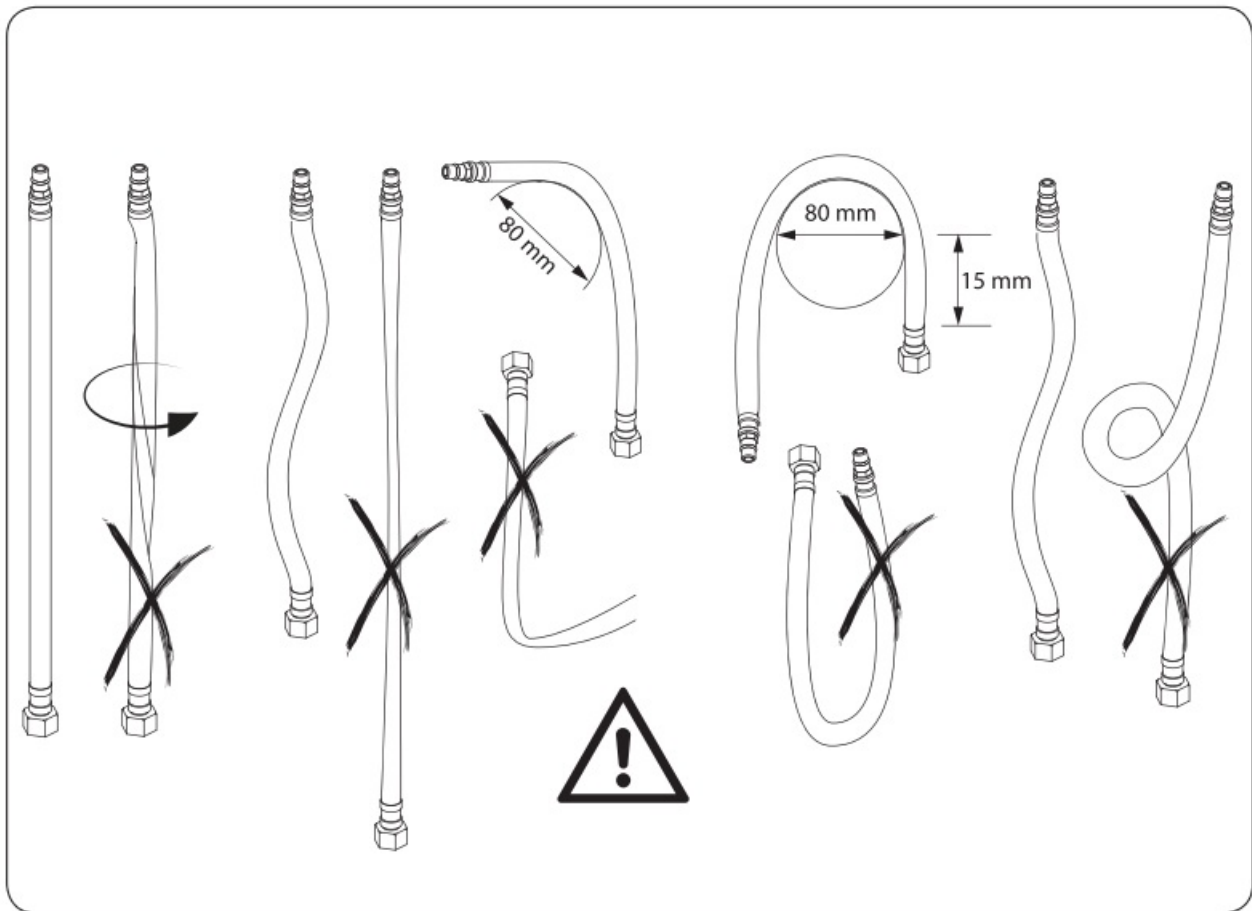
Dysfunction

Turn the faucet back on. Remove the batteries after have verified the following:

1. Correct installation according to the assembly instruction.
2. Angle valves are fully open.

3. Check if the screens in the fittings are clogged and clean them if necessary.

Safety Precautions



- Cleaning should be carried out as required (according to the public/commercial sector and/or for private household use).
- The choice of cleaning product must be taken into consideration depending on whether it is for regular maintenance or deep cleaning.
- The cleaning product must not contain volatile acids. Likewise, acetic or methanoic acids are not suitable.
- Abrasive products, scouring pads and microfiber cloths should not be used.
- Please never use mixed or overdosed cleaning products.
- The soaking time must be adapted to the degree of dirt.
- Please avoid cleaning with sprays.
- Faucets and accessories should be rinsed with plenty of water
- Residues from personal hygiene products such as liquid soap or shampoo can cause damage.
- Maintenance:
Check, clean and replace, if necessary, all components regularly.
The water supply must be turned off during maintenance work.



Manufactured for HORNBACH Baumarkt AG Hornbachstrasse 11 76879 Bernheim/Germany
www.hornbach.com

The crossed-out wheeled bin symbol requires separate disposal for waste electrical and electronic equipment (WEEE). Such equipment may contain valuable, but dangerous and hazardous substances. You are required by law to return these products to a designated collection point for the recycling of WEEE and must not under any circumstances dispose of them as unsorted municipal waste. In this way, you can help to conserve resources and protect the environment.

In Germany, HORNBACH is obliged:

- to take back old appliances of the same type free of charge in HORNBACH stores when you purchase a new electrical or electronic appliance.
- to take back up to 3 WEEE of the same type (up to max. 25 cm edge length) free of charge in HORNBACH stores, even if you do not purchase a new appliance.
- when delivering a new electrical or electronic appliance to a private household, to collect an old appliance of the same type free of charge or to enable you to return it in your immediate vicinity.

Make sure that all batteries have been removed from the appliance before disposing of it. You will find notes on this in the operating instructions (see page 14).

For further details, please consult www.hornbach.com or your local authorities.


Used batteries and rechargeable batteries must be disposed of properly. Battery selling stores and municipal collection points offer special containers for battery disposal. Precise data on the type and chemical system of the batteries can be found in the technical data, corresponding markings on the batteries themselves.

Children must not play with plastic bags and packaging material, due to the risk of injury and suffocation. Store such material safely or dispose of it in an environmentally friendly way.

LAMBDA

Jungborn®

Documents / Resources

 The image shows a technical drawing of a sensor fitting. It is a cylindrical component with a flange at one end and a threaded section at the other. The text 'Jungborn' and 'LAMBDA' are visible at the top of the drawing.	<p>Jungborn 10573812 Sensor Fitting LAMBDA Chrome Glossy [pdf] Instruction Manual 10573812 Sensor Fitting LAMBDA Chrome Glossy, 10573812, Sensor Fitting LAMBDA Chrome Glossy, LAMBDA Chrome Glossy, Chrome Glossy</p>
--	---

References

-  [hornbach.com](https://www.hornbach.com)

Manuals+.