

JUNG Switch Range Configurator App User Manual

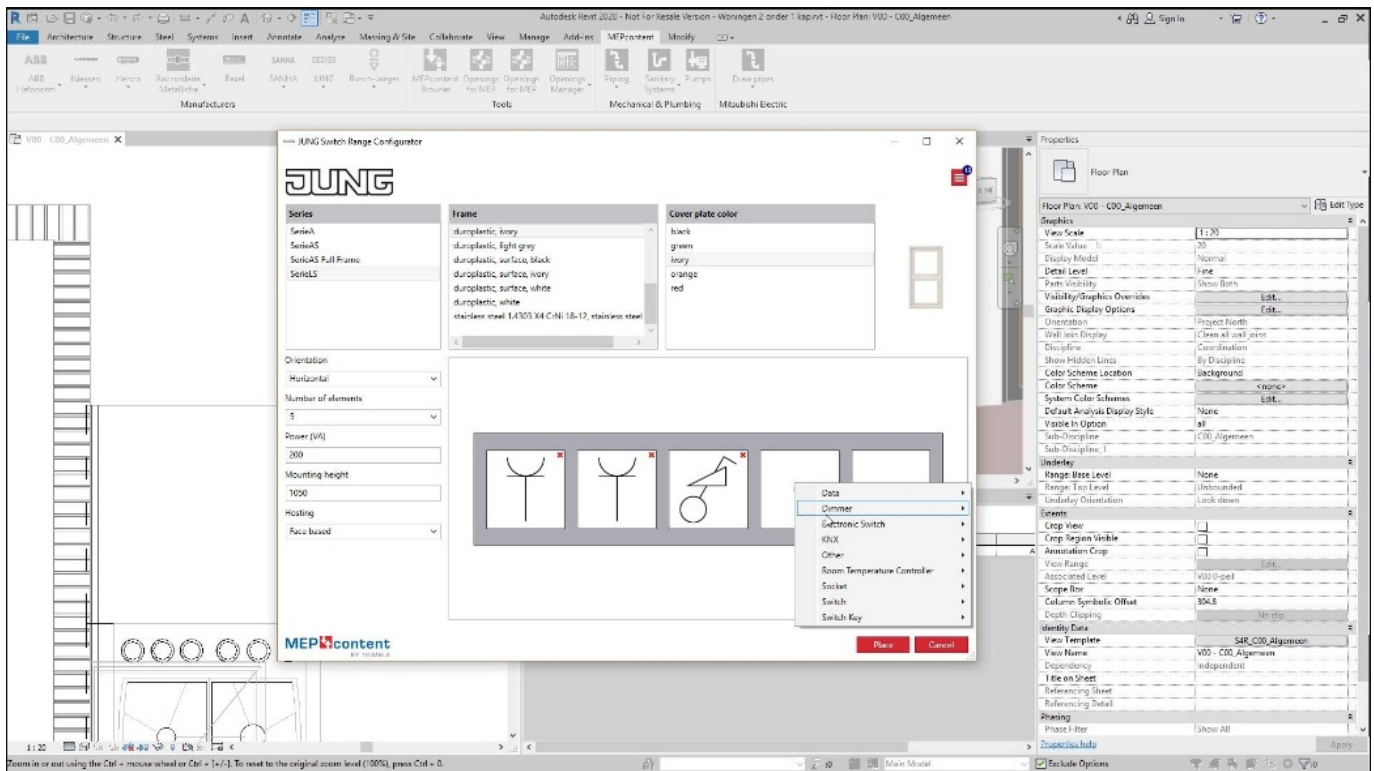
[Home](#) » [JUNG](#) » JUNG Switch Range Configurator App User Manual 

Contents

- [1 JUNG Switch Range Configurator App](#)
- [2 Specifications](#)
- [3 Product Usage Instructions](#)
- [4 INSTRUCTION](#)
- [5 Contact](#)
- [6 FAQ](#)
- [7 Documents / Resources](#)
 - [7.1 References](#)
- [8 Related Posts](#)

JUNG

JUNG Switch Range Configurator App



Specifications

- **Product:** JUNG Switch Range Configurator
- **Compatibility:** Autodesk Revit
- **Features:** Easy assembly of frames and inserts, logic test for compatible combinations, order list generation

Product Usage Instructions

Create Switch Combination:

- Access the JUNG Switch Range Configurator through Add-Ins in Autodesk Revit.
- Select the “Define new Combination” option after clicking on the JUNG application.
- Choose the switch program, frame alignment, and material. Specify if it’s a single or multiple combination.
- Click on “Define inserts” to define the required cover and select the insert behind it.

Splitting Combinations into Articles:

In the JUNG Switch Range Configurator menu, use the “Explode Combinations” option to break down selected combinations into articles.

This feature simplifies issuing invitations to tender by providing individual articles for easy planning adjustments.

LODs – Level of Detail:

The Revit family has a low level of detail to keep the design and planning process simple. The installation height is calculated using the installation height distance parameter along with the Height from the level parameter.

INSTRUCTION

The JUNG Switch Range Configurator – User manual

The BIM objects for Revit® with LOD 100 and 350 support the creation of intelligent 3D models of buildings for the

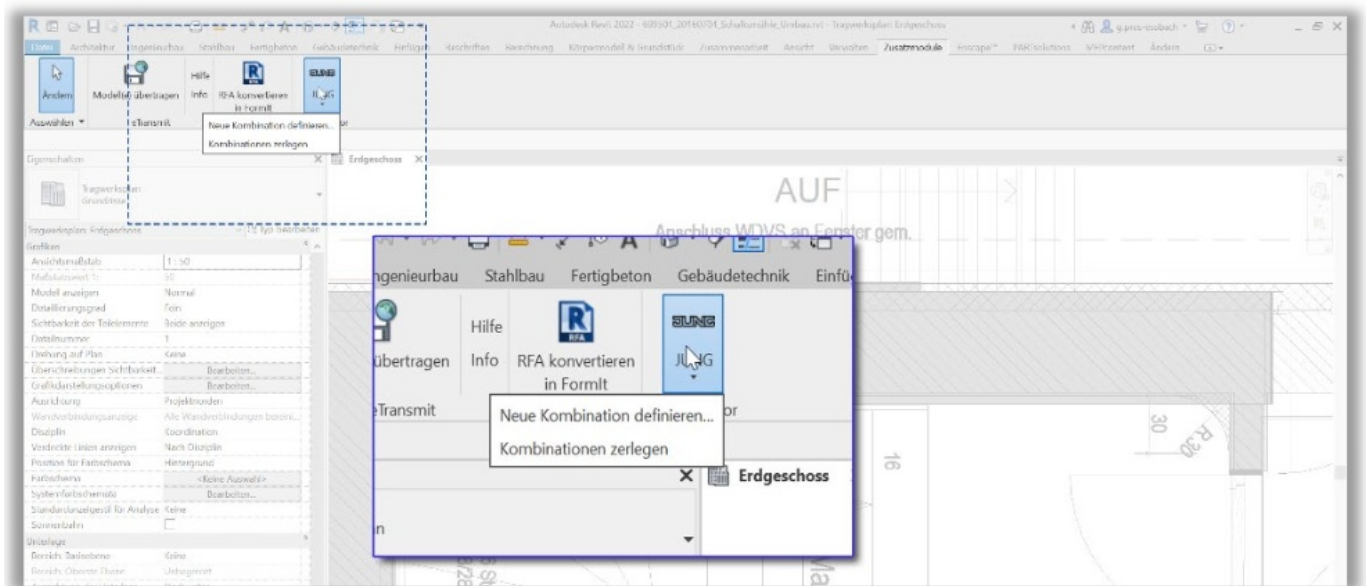
preparation of construction documentation. The planning and documentation solution covers all phases of a construction project.

Your advantages

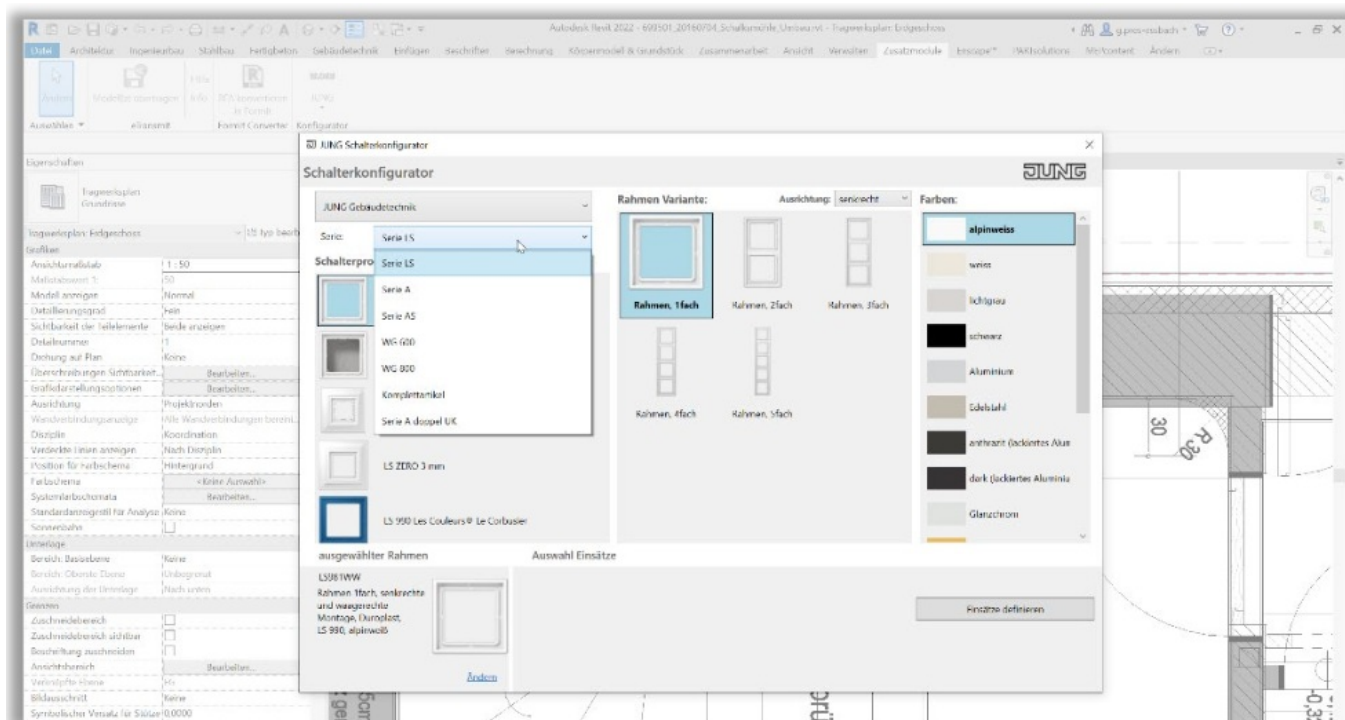
- Frames and inserts can easily be put together in a clear user interface. The product combination is made available in the software as a complete object.
- Any non-compatible combinations are excluded through a logic test. Changes to visible design components via the menu can be seen at the same time in all layout illustrations.
- Finally, you have the option to generate the precise number of units and order lists directly from the software

Create switch combination

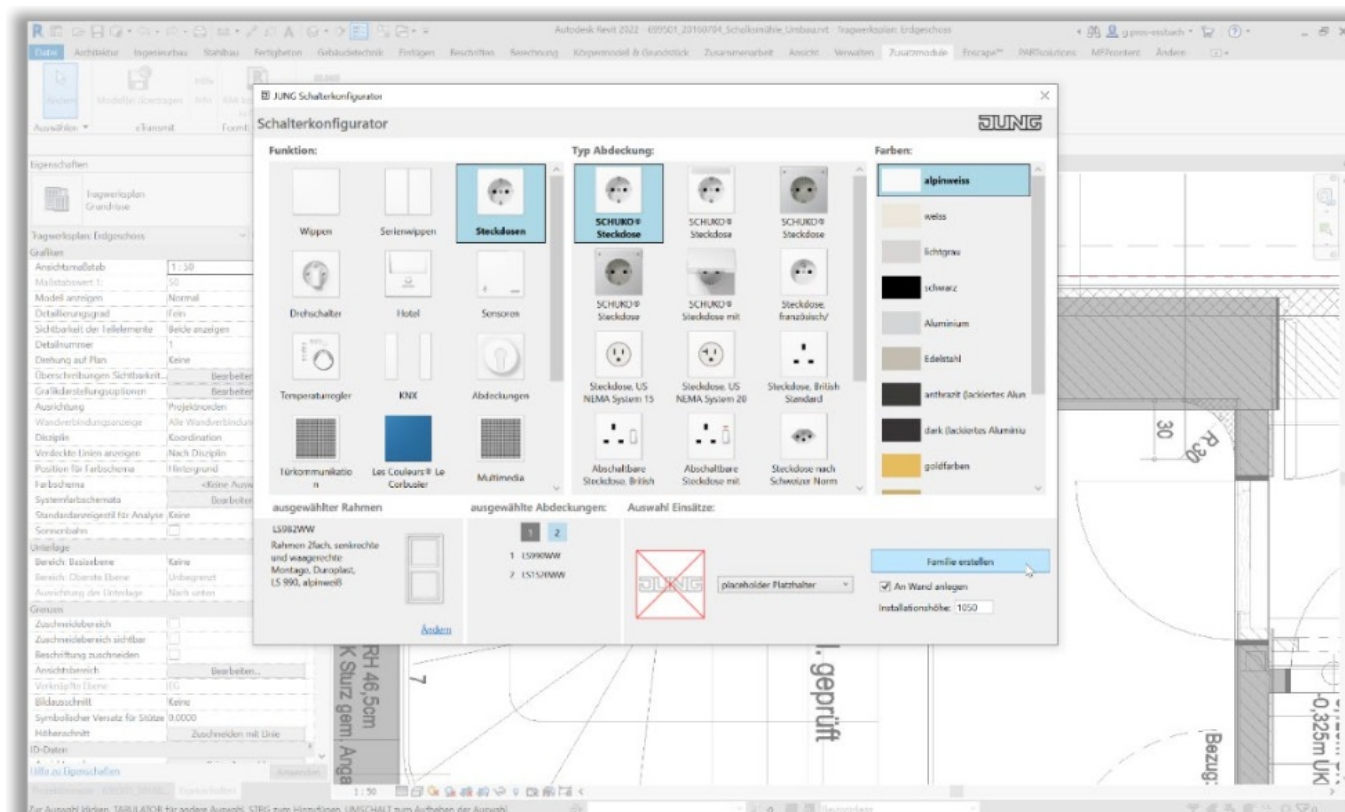
- After successful installation, the JUNG Switch Range Configurator can be accessed via the Add-Ins in Autodesk Revit.
- After clicking on the JUNG application, select the Define new Combination option.



Now select the appropriate switch programme for your planning. At this point, you determine both the alignment and the material of the frame. You also select whether it is a single or multiple combination. Then click on Define inserts.

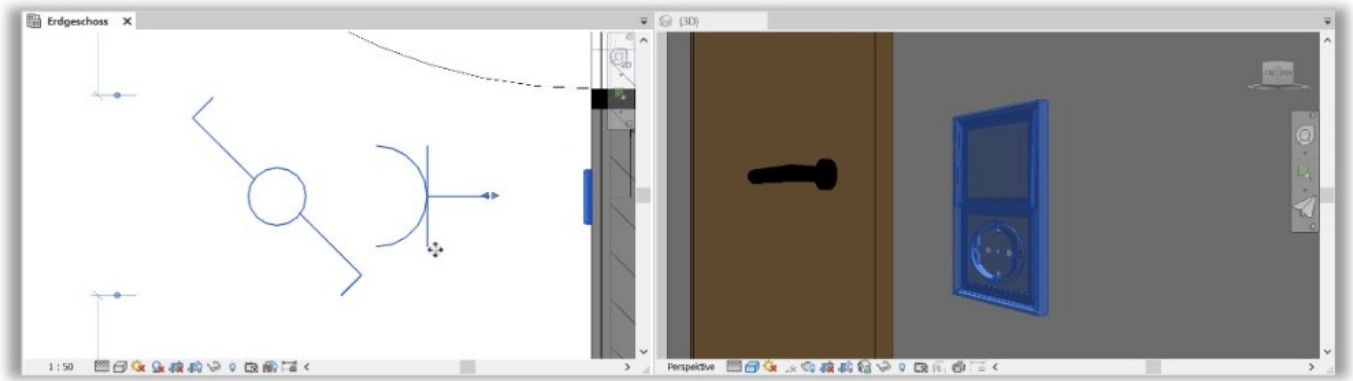


First, define the required cover. You determine the insert behind it via the menu item Select insert. If you have previously selected a multiple frame, change the element to be configured via the Selected centre plate menu item.



- Use the Installation height value to determine the height on the selected level. The value specified here is only transferred to the family if the family is placed in the floor plan. If the family is placed in the wall view or perspective view, the height targeted by the cursor applies. The installation height can also be adjusted afterwards.
- Deactivate the Place on wall option to place the combination independently of walls. Click on the Create family

button to create the combination. After a short wait, you can insert the family of the combination into your planning.



The combination family created here has a level of detail geared towards the design process. You can find more information on the level of information and geometry in the LODs – switch combinations chapter.

Splitting combinations into articles

To make it easy to issue invitations to tender with the articles used, there is an option in the menu of the JUNG Switch Range Configurator to Explode Combinations. When you are ready in your planning, you can use this function to break down all selected JUNG combination families into their articles. If no family is selected, this is done for all combination families in the planning stage.

The advantage of this function is that the complexity contained in the combination families only flows into the planning when the information becomes relevant for the execution. The individual articles now available enable the simple creation of component lists with the product properties relevant for the tender.

Elektroinstallationsliste					
<Elektroinstallationsliste>					
A	B	C	D	E	F
Ebene	Raumbezeichnung	Anzahl	Hersteller	JUNG Artikelnummer	Höhe von Ebene
EG	TRH	1	ALBRECHT JUNG GMBH & CO. KG	JUNG_LS982WW_506U_LS990WW_LS1520WW_v	0,940
EG	Küche	1	ALBRECHT JUNG GMBH & CO. KG	JUNG_LS982WW_505U_LS995WW_LS1520WW_h	1,010
EG	Büro	1	ALBRECHT JUNG GMBH & CO. KG	JUNG_LS985WW_509U_LS995WW_1730JE_BTLS	0,870

-Elektroinstallationsliste Stückzahlen-												
A	B	C	D	E	F	G	H	I	J	K	L	
Anzahl	Hersteller	Familie	JUNG Name	Ausschreibungstext kurz	Einbauteile (mm)	Montageart	JUNG Material	Ähnlich RAL	Stromkreisnum	ETIM 8 Klasse - Tit	Kosten	U
1	ALBRECHT JUNG GMBH & CO. KG	5050_U	Serienschalter-Eins	Wippschalter (Einsatz), 10 AX 250 V - , Serien	32	UP	0			Installationsschalter		http://www.jung.de
1	ALBRECHT JUNG GMBH & CO. KG	5050_W	Wippschalter 10 AX	Wippschalter (Einsatz), 10 AX 250 V - , Universal Aus-Wechsel	32	UP	0			Installationsschalter		http://www.jung.de
1	ALBRECHT JUNG GMBH & CO. KG	5090_W	Wippschalter 10 AX	Wippschalter (Einsatz), 10 AX 250 V - , Doppel-Wechsel	32	UP	0			Installationsschalter		http://www.jung.de
1	ALBRECHT JUNG GMBH & CO. KG	7130E_U	Jalousie/Einsatz Sta	Jalousie/Einsatz Standard, ohne Nebenstelleneingang	0	UP	0			Jalousieschalter-ta		http://www.jung.de
2	ALBRECHT JUNG GMBH & CO. KG	BTL51215WW_U	JUNG HOME Steck	JUNG HOME SCHUKO® Steckdose, 16 A 250 V - , mit Funktionsanzeige, SAFETY-		UP	Thermoplast	9016		Steckdose		http://www.jung.de
1	ALBRECHT JUNG GMBH & CO. KG	BTL517102WW_U	JUNG HOME Taster	JUNG HOME Taster 2fach, Duroplast, Serie LS, alpinweiß		UP	Duroplast	9016				http://www.jung.de
1	ALBRECHT JUNG GMBH & CO. KG	LS982ZW_W_h	Rahmen 2fach	Rahmen 2fach, senkrechte und waagerechte Montage, Duroplast, LS 990, alpinweiß		AP	Duroplast	9016		Abdeckrahmen		http://www.jung.de
1	ALBRECHT JUNG GMBH & CO. KG	LS982ZW_W_v	Rahmen 2fach	Rahmen 2fach, senkrechte und waagerechte Montage, Duroplast, LS 990, alpinweiß		AP	Duroplast	9016		Abdeckrahmen		http://www.jung.de
1	ALBRECHT JUNG GMBH & CO. KG	LS985WW_W_v	Rahmen 5fach	Rahmen 5fach, senkrechte und waagerechte Montage, Duroplast, LS 990, alpinweiß		AP	Duroplast	9016		Abdeckrahmen		http://www.jung.de
1	ALBRECHT JUNG GMBH & CO. KG	LS990WW_W	Wippe	Wippe 1fach, Duroplast, Serie LS, alpinweiß		NaV	Duroplast	9016		Abdeckung/Bedien		http://www.jung.de
2	ALBRECHT JUNG GMBH & CO. KG	LS995WW_W	Serienwippe	Wippe 2fach, Duroplast, Serie LS, alpinweiß		NaV	Duroplast	9016		Abdeckung/Bedien		http://www.jung.de
1	ALBRECHT JUNG GMBH & CO. KG	LS120NAWW_U	SCHUKO®-Steckd	SCHUKO Steckdose, 16 A 250 V - , mit Schriftfeld, Duroplast, Serie LS, alpinweiß		UP	Duroplast	9016		Steckdose		http://www.jung.de
2	ALBRECHT JUNG GMBH & CO. KG	LS120WW_U	SCHUKO®-Steckd	SCHUKO Steckdose, 16 A 250 V - , Duroplast, Serie LS, alpinweiß		UP	Duroplast	9016		Steckdose		http://www.jung.de

The families are created in groups so that you do not make any mistakes when making planning adjustments – be it deleting or moving geometries of the now individually available items. You can find out exactly how the split families are organised in the chapter LODs – grouped families.

LODS

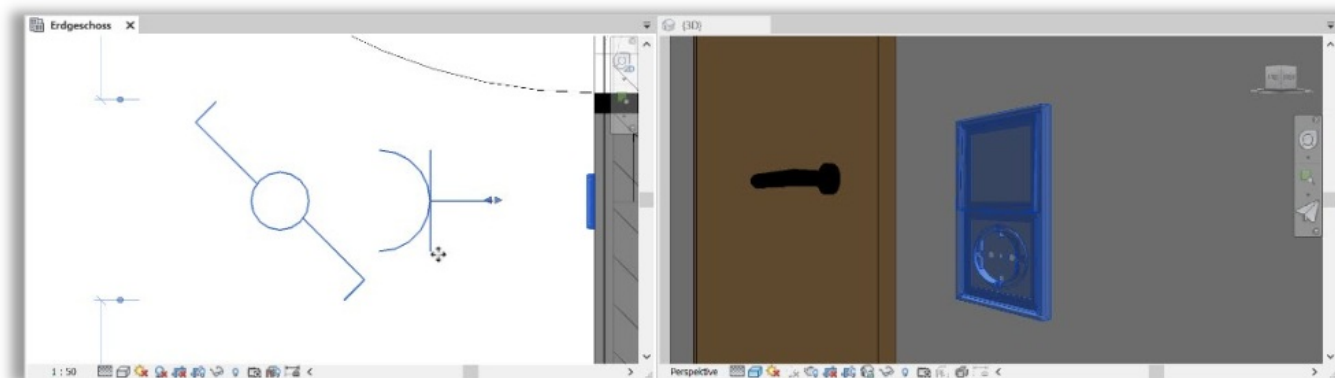
- The switch combinations (compact JUNG Revit family)
- The Lol of the Revit family is low – to keep the design and planning process as simple as possible, a combination of the various articles (i.e. frame, insert and cover) is created in the first step.
- As the JUNG product portfolio, and therefore also the configurator allows up to 5-fold combinations, the family created is equipped with the most necessary information for the design.

<Elektroinstallationsliste>			
A	B	C	D
Anzahl	Hersteller	JUNG Artikelnummer	Höhe von Ebene
1	ALBRECHT JUNG GMBH & CO. KG	JUNG_LS982WW_506U_LS990WW_LS1520WW_v	0,940

Attention: The Elevation from level parameter does not represent the installation height in accordance with DIN 18015-3. To calculate the actual installation height, the combinations contain the installation height distance parameter. This must be added to the Height from level parameter to obtain the actual installation height.

LOG

- The electrical symbols for the functions of the created combination are displayed in the floor plan.
- The distance from the wall is an object parameter and can be moved both via the properties and directly in the drawing (via the arrow symbols). This has the advantage that the creation of overlapping combinations does not lead to the symbols overlapping.



The geometric body is displayed both in the floor plan, in the wall view and in the 3D view. There are two levels of detail – coarse, in which only the outline of the frame is displayed, and fine and medium, in which the essential details of the frames and covers can be recognised. The display of the insert has been completely omitted.

Single articles (grouped Revit-families)

Lol

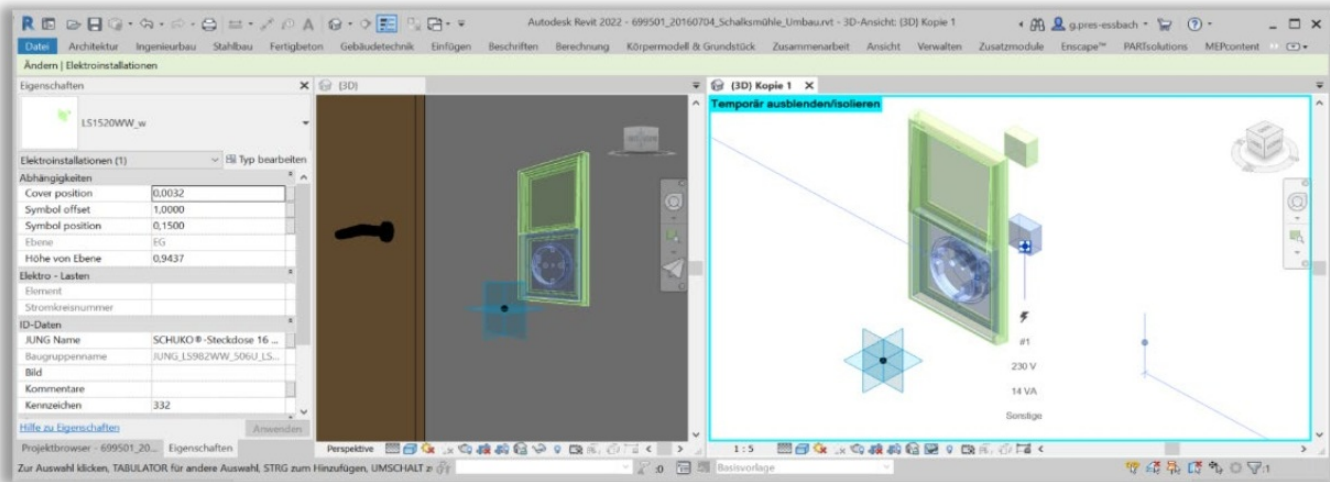
The information content of the Revit families increases as they are broken down into items. The individual families contain essential information about the product as well as tender texts and classifications required for the BIM process, such as OmniClass, UniClass and, last but not least, IFC.

This makes an OpenBIM process possible.

<Elektroinstallationsliste Stückzahlen>											
A	B	C	D	E	F	G	H	I	J	K	L
Anzahl	Hersteller	Familie	JUNG Name	Ausschreibungstext kurz	Einbauliefe (mm)	Montageart	JUNG Material	Ähnlich RAL	Stromkreisnumm	ETM 8 Klasse	Titel
1	ALBRECHT JUNG GMBH & CO. KG	5050_u_w	Serienschalter-Eins	Wippschalter (Einsatz), 10 AX 250 V -, Serien	32	UP	0				Installationsschalter
1	ALBRECHT JUNG GMBH & CO. KG	5060_u_w	Wippschalter 10 AX	Wippschalter (Einsatz), 10 AX 250 V -, Universal Aus-Wechsel	32	UP	0				Installationsschalter
1	ALBRECHT JUNG GMBH & CO. KG	5090_u_w	Wippschalter 10 AX	Wippschalter (Einsatz), 10 AX 250 V -, Doppel-Wechsel	32	UP	0				Installationsschalter
1	ALBRECHT JUNG GMBH & CO. KG	1730J_e_w	Jalousieeinsatz	Stk. Jalousieeinsatz Standard, ohne Nebenstelleneinigung	0	UP	0				Jalousieschalter-ist
2	ALBRECHT JUNG GMBH & CO. KG	6TL51521S1WW_w	JUNG HOME Steck	JUNG HOME SCHUKO® Steckdose, 16 A 250 V -, mit Funktionsanzeige, SAFETY+		UP	Thermoplast	9016			Steckdose
1	ALBRECHT JUNG GMBH & CO. KG	6TL517102WW_w	JUNG HOME Taster	JUNG HOME Taster 2fach, Duroplast, Serie LS, alpinweiß		UP	Duroplast	9016			
1	ALBRECHT JUNG GMBH & CO. KG	LS982WW_w_h	Rahmen 2fach	Rahmen 2fach, senkrechte und waagerechte Montage, Duroplast, LS 990, alpinweiß		AP	Duroplast	9016			Abdeckrahmen
1	ALBRECHT JUNG GMBH & CO. KG	LS982WW_w_v	Rahmen 2fach	Rahmen 2fach, senkrechte und waagerechte Montage, Duroplast, LS 990, alpinweiß		AP	Duroplast	9016			Abdeckrahmen
1	ALBRECHT JUNG GMBH & CO. KG	LS985WW_w_v	Rahmen 5fach	Rahmen 5fach, senkrechte und waagerechte Montage, Duroplast, LS 990, alpinweiß		AP	Duroplast	9016			Abdeckrahmen
1	ALBRECHT JUNG GMBH & CO. KG	LS990WW_w	Wippe	Wippe 1fach, Duroplast, Serie LS, alpinweiß		NaV	Duroplast	9016			Abdeckung/Bedien
2	ALBRECHT JUNG GMBH & CO. KG	LS995WW_w	Serienwippe	Wippe 2fach, Duroplast, Serie LS, alpinweiß		NaV	Duroplast	9016			Abdeckung/Bedien
1	ALBRECHT JUNG GMBH & CO. KG	LS1520NAWW_w	SCHUKO® Steckd	SCHUKO® Steckdose, 16 A 250 V -, mit Schriftfeld, Duroplast, Serie LS, alpinweiß		UP	Duroplast	9016			Steckdose
2	ALBRECHT JUNG GMBH & CO. KG	LS1520WW_w	SCHUKO® Steckd	SCHUKO® Steckdose, 16 A 250 V -, Duroplast, Serie LS, alpinweiß		UP	Duroplast	9016			Steckdose

LOG

Geometrically, the individual families appear identical to the combination families. The electrical symbols can be seen in the floor plan and the frames and covers of the JUNG families in all views. The degrees of fineness also correspond to the combination items. Now, in contrast to before, the articles are individual families. However, they are summarised as a group so as not to lose their interdependence.



A substitute geometry for the inserts has been added to display all the necessary information for the JUNG articles. On the one hand, this simple cube enables the user to display the insert information in the component lists, and on the other hand, the 3-dimensional representation makes it possible to transfer the information for use in other CAD systems. The insert geometry also has an electrical connector so that it can be properly integrated into the electrical planning.

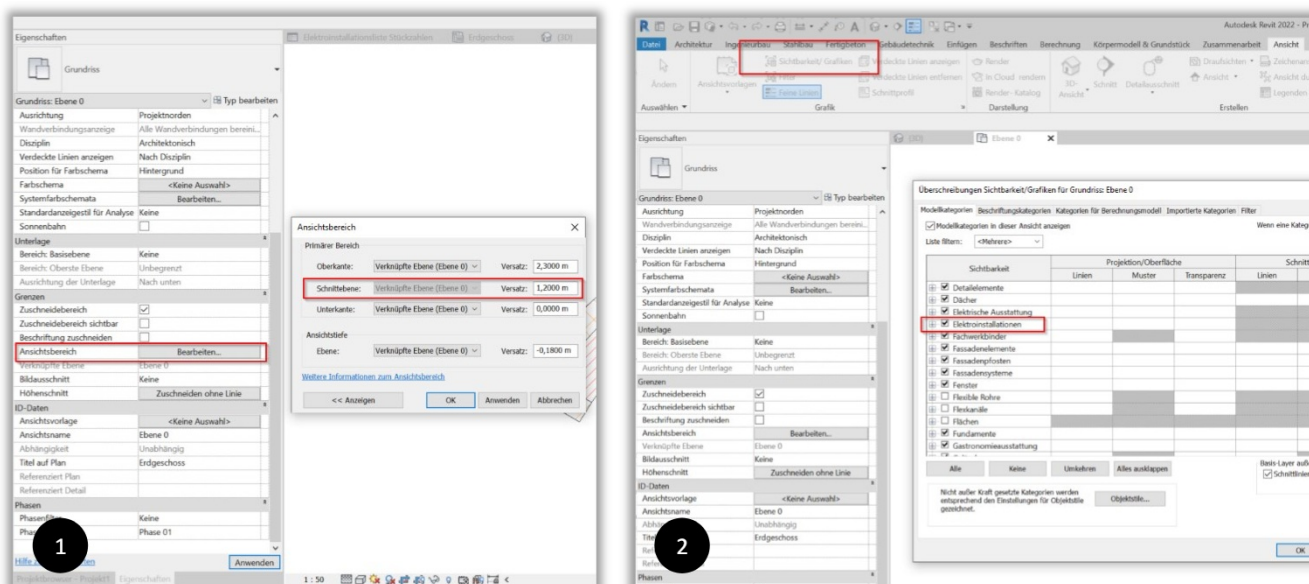
ChangeLog

Version No.	Changes
V2	Two-stage creation system for switch combinations
V2	Preset installation height instead of wall distance
V2	Customisation of family designation
V2	Movable DIN symbols in the floor plan
V2	Simplified visualisation of the insert geometry
V2	<p>New products</p> <ul style="list-style-type: none"> New system: JUNG HOME New devices: LS TOUCH New switch range: LS 1912
V2	Link to the JUNG online catalogue
V2	Classification according to IFC, OmniClass, UniClass, ETIM 8
V2	Supplement Features
V2	Inclined rockers
V2	Customised user interface Menu
V2	Version update Revit 2024

Common questions- suggested solutions

Q1: / don't see the electrical symbol in the floor plan

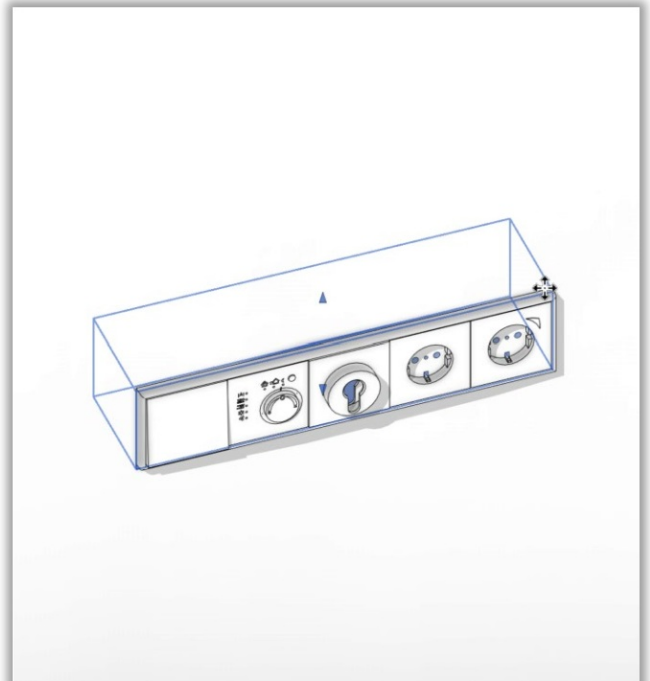
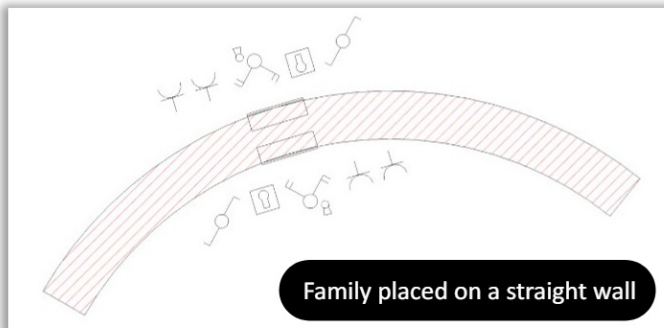
1. check in the properties of the plan whether the family used is below the sectional plane
2. check whether the visibility of the "Electrical installations" model category is activated.



3. check whether you have entered the value in millimetres for the installation height parameter when creating the

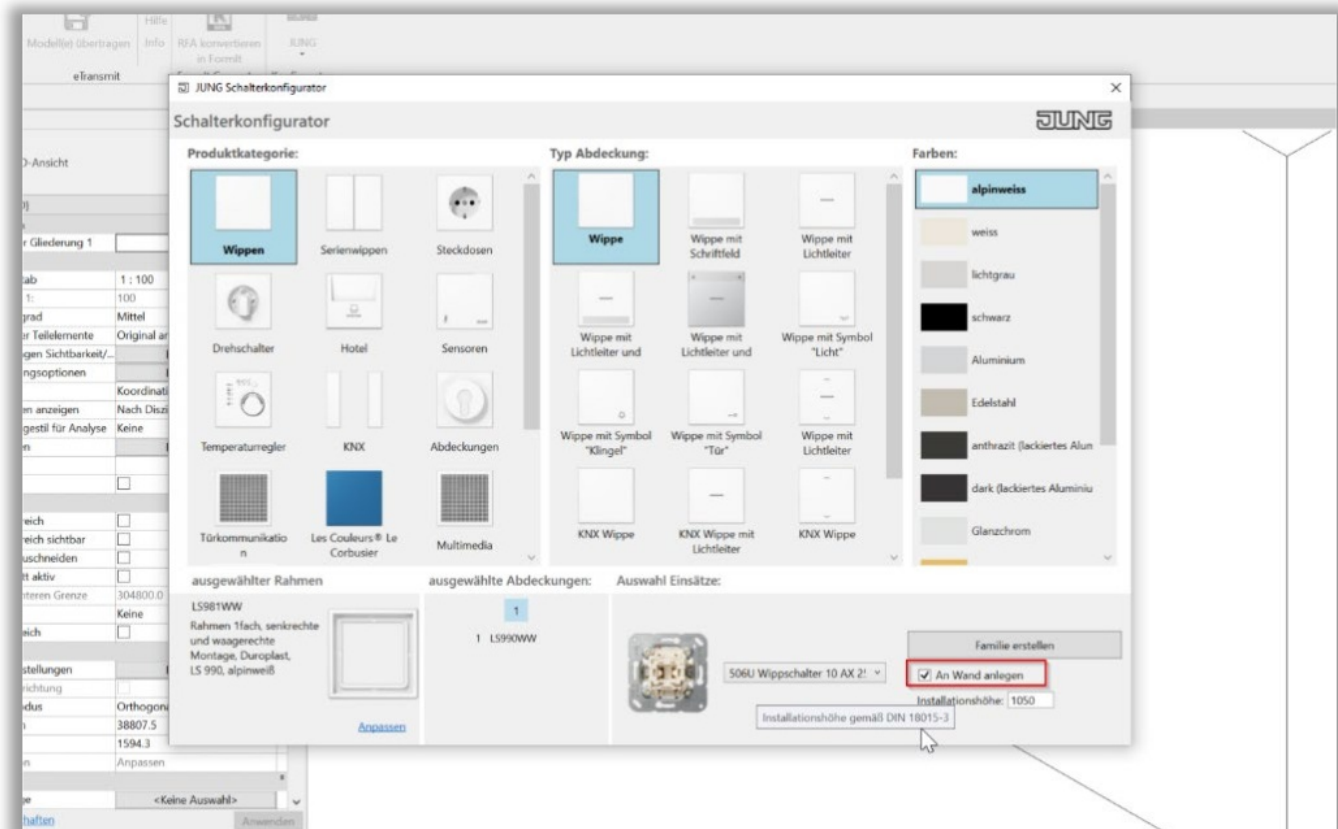
Q2: If I place a horizontal combination family on a rounded wall and disassemble the family with the JUNG Switch Range Configurator, the 3D geometry and the symbols are not positioned correctly. Is there a way to prevent this?

Yes, to display the combination correctly, it is advisable to place a straight wall parallel to the tangent of the wall at the corresponding point before positioning. So do not place the family on the round wall, but on the straight wall.

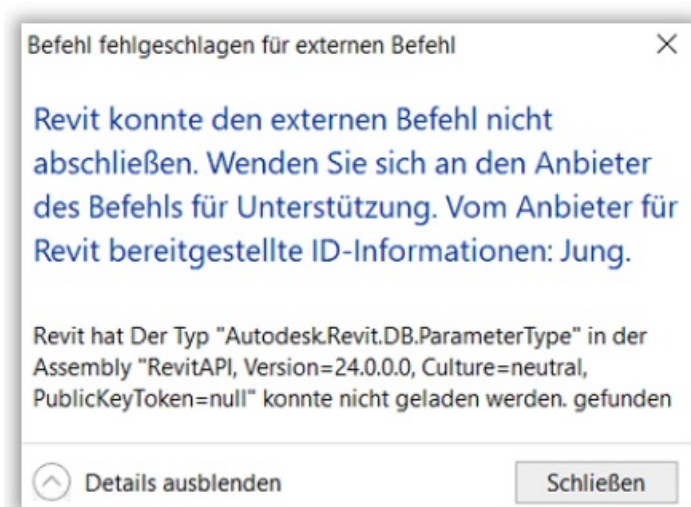


Q3: I am working with a referenced architecture model and cannot place the models in the project. How can I deal with this?

To place the combinations on surfaces that are not walls, you must deselect the option Create on wall when creating the combination family. This enables placement in a 3D view.



Q4: When I try to generate a combination family, I get an error and the family is not created.



This error can have various causes. Basically, it can be said that the data basis does not match. Delete the JungProductConfigurator folder and the JungProductConfigurator.addin file in the following folder paths:

- C:\ProgramData\Autodesk\Revit\Addins\[Your Revit-Versions]
- C:\Users\username\AppData\Roaming\Autodesk Revit Addins [Your Revit-Versions]

Then install the configurator again. If you still have problems, please contact bim@jung.de.


Contact

If you have any questions or suggestions, please contact bim@jung.de.

FAQ

- **Q: How do I access the JUNG Switch Range Configurator in Autodesk Revit?**
 - A: Access the configurator through Add-Ins in Autodesk Revit.
- **Q: What is the purpose of splitting combinations into articles?**
 - A: It simplifies issuing invitations to tender and enables easy planning adjustments by providing individual articles.

Documents / Resources

 <p>Electrical planning with the JUNG Switch Range Configurator in Autodesk Revit</p>	<p>JUNG Switch Range Configurator App [pdf] User Manual 2023, Switch Range Configurator App, Switch, Range Configurator App, Configurator App, App</p>
--	--

References

- [User Manual](#)

Manuals+, Privacy Policy

This website is an independent publication and is neither affiliated with nor endorsed by any of the trademark owners. The "Bluetooth®" word mark and logos are registered trademarks owned by Bluetooth SIG, Inc. The "Wi-Fi®" word mark and logos are registered trademarks owned by the Wi-Fi Alliance. Any use of these marks on this website does not imply any affiliation with or endorsement.