



JUNG BT17101 Push Button Switch Instruction Manual

[Home](#) » [JUNG](#) » JUNG BT17101 Push Button Switch Instruction Manual 

JUNG BT17101 Push Button Switch Instruction Manual



Contents

- [1 Safety instructions](#)
- [2 Device components](#)
- [3 Intended use](#)
- [4 Operation](#)
- [5 Mounting and electrical connection](#)
- [6 Resetting the device to the factory setting](#)
- [7 Technical data](#)
- [8 List of functions and parameters](#)
- [9 Conformity](#)
- [10 Documents / Resources](#)
 - [10.1 References](#)

Safety instructions

To avoid potential damage, read and follow the following instructions:



Installation only by persons with relevant knowledge and experience in the following areas:

- Five safety regulations and standards for the installation of electrical systems
- Selection of suitable tools, measuring devices, installation materials and, if necessary, personal protective equipment
- Installation of the installation material
- Connection of devices to the building installation under consideration of local connection conditions

Improper installation endangers your own life and the lives of people using the electrical system and there is a risk of serious damage to property, e.g. through fire. You are at risk of personal liability for personal injury and damage to property.

Consult an electrically skilled person.

Danger of electric shock. If the device exhibits any visible damage, it must not be used any longer. Immediately disconnect device from mains by switching off all associated circuit breakers.

Danger of electric shock. Device is not suitable for disconnection from supply voltage because – depending on the insert used – mains potential even is applied on the load when the device is switched off. Always disconnect before carrying out work on the device or load. To do so, switch off all associated circuit breakers.

The device must not be used for applications from the field of safety engineering, such as emergency stop, emergency call or smoke extraction.

Read the instructions in full, observe them and keep them for future reference.

You can find more information on JUNG HOME at www.jung.de/JUNGHOME

Device components

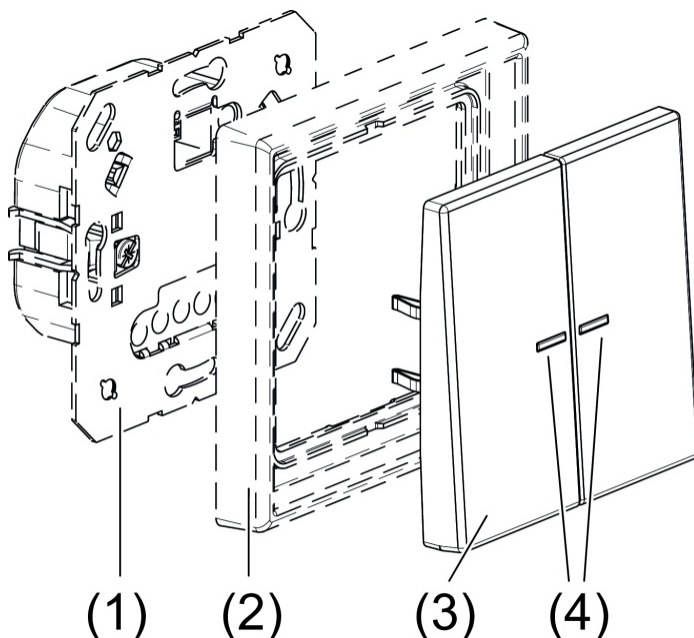


Image 1: JUNG HOME push-button 1-gang

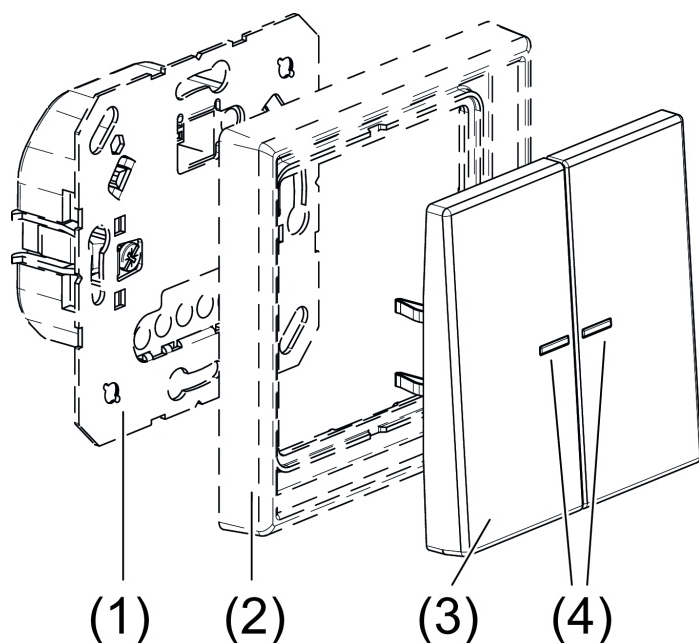


Image 2: JUNG HOME push-button 2-gang

1. System insert
2. Design frame
3. Operating cover
4. Status LED

LED indication during operation

Green*	Output is switched on Venetian blind, shutter, awning moving
Orange*	Output is switched off (rocker operating concept) Venetian blind, shutter, awning stationary Orientation LED (button operating concept)
Red	Disabling function active, e. g. continuously ON/OFF
Blue, triple flashing	Time has not been set, e. g. due to extended power failure
Flashing green/red	Device update is being performed
Red, triple flashing	Error message (cover was previously connected to another system insert)

* Colour adjustable

Intended use

- Manual and automatic operation of e. g. venetian blinds, shutters, awnings lighting or fans
- Wireless connection to devices from the JUNG HOME system
- Operation with system insert for dimming, switching, venetian blind or 3-wire extension

Product characteristics

- Commissioning and operation using JUNG HOME app on mobile end device (smartphone or tablet) via Bluetooth
- Operation of top, bottom and full surface with up to two linked functions per rocker
- Using buttons to control areas (groups) or call up scenes
- Using buttons to operate wirelessly linked JUNG HOME devices
- Multi-colour status display
- Feedback of load status by status LED
- Disabling of local operation
- Integration of the load into areas (groups), main functions and scenes
- Up to 16 time programs control the functions of the respective system insert (switch on, switch off, dimming, move venetian blind, adjust temperature)
- Staircase lighting function (automatic switch-off) with switch-off warning
- Run-on time, switch-on delay, switch-off delay
- Activate/deactivate automatic functions with the JUNG HOME app
- Automatic date and time update when connecting with smartphone
- Maximum brightness and minimum brightness adjustable, with dimming insert
- Switching on with last brightness or fixed switch-on brightness, with dimming inserts
- Ventilation position, running time, slat change-over time, change-over time for change in direction and inverse operation adjustable, with venetian blind insert
- Evaluation of the extension inputs (if present) to control the system insert
- Bluetooth SIG Mesh for fully encrypted wireless communication and repeater function
- Updating via JUNG HOME App

Available by update in the future:

- Using buttons to trigger disabling function and restraint
- Time programs with sunrise and sunset (astro timer)
- Time programs with random time
- Disabling function and restraint: lock-out protection, continuously ON/OFF or ON/OFF for fixed time
- Night light function with period for brightness reduction, with dimming insert
- Hotel function (orientation light instead of OFF), with dimming insert
- Warm dimming (changing the colour temperature with simultaneous brightness increase), with DALI insert
- Wind alarm by connecting conventional weather sensors to extension input with venetian blind insert
- Night mode for status LED

You can find information on updates and dates at www.jung.de/JUNGHOME.

Behaviour after a mains voltage failure

All settings and time programs are retained. Missed switching times are not performed later. The load output or the system insert outputs are switched off, provided the parameter "Switching status after mains voltage returns" is set to its default setting.

If the device was not previously added to a Bluetooth Mesh network (project) by means of the JUNG HOME app, it will switch to pairing mode for two minutes after the mains voltage returns and the status LED will flash slowly at a

regular interval in blue.

Power failure shorter than power reserve (min. 4 hours)

- Time and date are up to date
- The following time programs are performed normally again

Power failure longer than power reserve (min. 4 hours)

- If the LEDs flash three times repeatedly, the time is not up to date and must be updated by connecting to the app.
- The time programs are not executed as long as the time is not up to date

Operation

All settings and operations of the cover can be configured individually using the JUNG HOME app.

Configuration in the JUNG HOME app: The default setting with the “rocker” operating concept is described in the table.

Type of operation	Brief press	Long press
Switching ¹	Switch on alternately at top, bottom or with full surface	Switch on at top, bottom of with full surface alternately
Dimming ¹	Switch on at top, bottom of with full surface to switch- on brightness / s witch off alternately	Top: dim brighter / bottom: dim darker
Move venetian blind / shut- ter / awning ²	Stop or adjust the slats	Top: move up / bottom: move down
Heating ¹	Increase the target temper- ature at the top by 0.5 °C / Decrease the target tem- perature at the top by 0.5° C	–
Operating scenes ¹	Call up scene at top or bot- tom	Call up scene at top or bot- tom
Operating an area (group) ^{1/2}	Depending on the unit, as described for switching, dimming, v enetian blinds and heating	Depending on the unit, as described for switching, dimming, v enetian blinds and heating
Disabling function (lock-out protection, restraint) ¹	–	Top: activate / bottom: de- activate
Changing the colour tem- perature (with DALI insert)	–	Top: increase colour tem- perature / bottom: decrease colour temperatur e

1. Brief push-button action < 0.4 s < long push-button action

2. Brief push-button action < 1 s < long push-button action

Configuration in the JUNG HOME app: "button" operating concept

Type of operation	Brief press	Long press
Switching ¹	Alternately switch on / switch off	Alternately switch on / switch off
Dimming ¹	Alternately switch on / switch off switch-on brightness	Alternately dim brighter / dim darker
Move venetian blind / shutter / awning ²	Stop or adjust the slats	Alternately move up / move down
Heating ¹	–	–
Operating scenes ¹	Recalling scenes	Recalling scenes
Operating an area (group) ^{1/2}	Depending on the unit, as described for switching, dimming, venetian blinds and heating	Depending on the unit, as described for switching, dimming, venetian blinds and heating
Disabling function (lock-out protection, restraint) ¹	–	–
Changing the colour temperature (with DALI insert)	–	Alternately increase colour temperature / decrease colour temperature

1. Brief push-button action < 0.4 s < long push-button action
2. Brief push-button action < 1 s < long push-button action

Wireless operation

Wireless operation is carried out with linked JUNG HOME devices or via the JUNG HOME App, which is also used to link JUNG HOME devices (see 'Commissioning with app').

Operation via extensions

Precondition:

A push-button, an Satellite insert 2-wire with an LB Management push-button 1-gang or an Satellite insert 3-wire, power supply with an LB Management push-button 1-gang or LB management motion detector is connected. Multiple extensions can be combined with each other. Operation with the Rotary satellite insert 3-wire is described in the rotary extension instructions.

If no run-on time (load) is set, the load either switches alternately ON/OFF or specifically ON at the top and OFF at the bottom, depending on the extension used.

Switching on a load for the duration of the run-on time

- Press the operating cover at the top or the push-button briefly or LB management motion detector detects a movement.

The run-on time is restarted by pressing again or detecting the movement again.

If the load is supposed to be able to be switched off manually, the parameter "Manual switch-off of run-on time"

must be activated.

Adjust the brightness, only in combination with dimming insert

- Press and hold the operating cover at the top or bottom or the push-button. In the case of a push-button, the dimming direction is changed with each new long actuation.

Mounting and electrical connection

The communication of the JUNG HOME devices and linked mobile end devices is carried out in wireless mode within the range of the Bluetooth Mesh network.

Wireless signals can be affected in their range through:

- Number, thickness, position of ceilings, walls and other objects
- Material type of these objects
- High-frequency interfering signals

Observe the following fitting instructions to maximise the range:

- Plan the positions and number of JUNG HOME devices to keep the number of ceilings and walls between two devices as low as possible
- If JUNG HOME devices are installed on both sides of a solid wall, they should be positioned as close as possible to each other on the opposite sides of the wall. This keeps the attenuation of the wireless signal through the wall as low as possible
- When planning, observe that the number of building materials and objects that attenuate the wireless signal strongly (e. g. concrete, glass, metal, insulated walls, water tanks, pipelines, mirrors, book cabinets, storage rooms and refrigerators) on the connection line between JUNG HOME devices is as low as possible
- Keep a distance of at least 1 m from devices that emit high-frequency signals (e. g. microwave, motors) or run with wireless signals at 2.4 GHz (e.g. WLAN router, baby monitor, IP cameras, wireless loudspeakers etc.)



DANGER!

Electric shock when live parts are touched.

Electric shocks can be fatal.

Always disconnect before carrying out work on the device or load. For this, switch off all corresponding circuit breakers, secure against being switched on again and check that there is no voltage. Cover up adjacent live parts.

Prerequisite: The system insert (1) is mounted and connected properly (see instructions for the relevant system insert).

- Fit the operating cover (3) with frame on the system insert (1).

- Switch on mains voltage.

An system insert-cover alignment is executed.

If the status LED (4) flashes red three times at repeated intervals, the cover was previously connected to another system insert. To enable operation again, perform one of the following steps:

- Fit the cover on the original system insert
- With a system insert of the same type: full-surface operation of the left button for more than 4 seconds. The parameter settings and app and network connection are retained.
- With a system insert of a different type: reset the cover to the default setting.
The parameter settings and app and network connections are retained.

Prerequisite: the JUNG HOME device has not yet been made a participant in a Bluetooth Mesh network; otherwise reset the device to factory defaults.

If a Bluetooth Mesh network (project) does not yet exist, start by creating a new project for the first JUNG HOME device in the JUNG HOME app.

If a Bluetooth Mesh network already exists, the project file for this network must be opened in order to pair the new device.



After switching on the mains voltage, the device is automatically in pairing mode for 2 minutes.

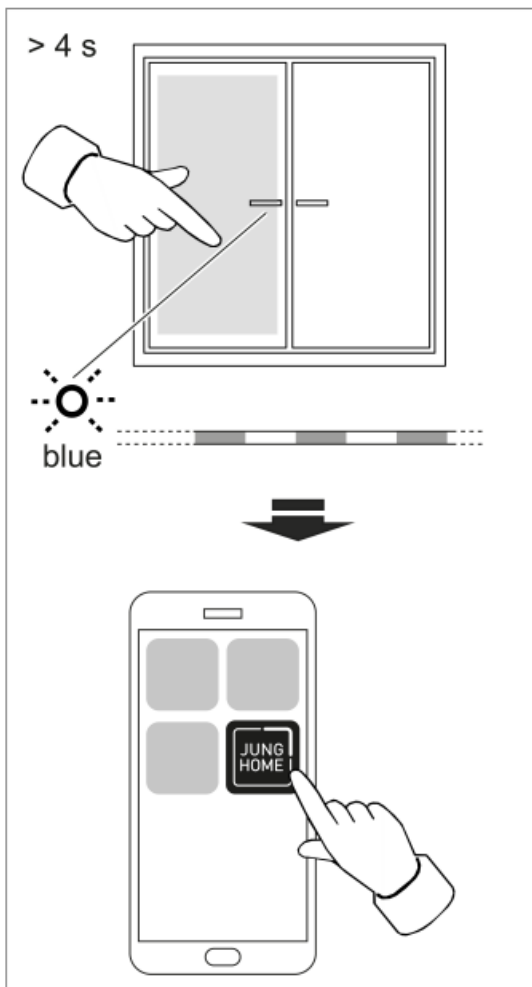


Image 3: Commissioning

Activate pairing mode manually:

Press the left button over entire surface for longer than 4 seconds.

The status LED flashes slowly in blue. Pairing mode is active for two minutes.

- Start the JUNG HOME app.
The app shows all devices in pairing mode.
- Select a device in the app.
To identify the selected device, its status LED flashes more quickly in blue.
- Add the device to the project.

The status LED lights up in blue for five seconds to confirm that pairing was successful.

If the status LED flashes red very fast, pairing has failed and needs to be retried.



The JUNG HOME app can then be used to link devices wirelessly and configure the parameters and operation (see list of functions and parameters).



Once the commissioning of the JUNG HOME project has been completed, hand over the project file to the

customer.

Besides basic commissioning, the JUNG HOME app enables device updates and convenient operation of further individual configuration options:

- **Link:** A button, binary input or motion sensor can be controlled by linking it to a load (e. g. dimmer, socket, switching output, shutter, etc.). Several loads can be controlled together by linking them to an area or scene.
- **Area:** Different loads (e. g. dimmer, socket, switching output, shutter, etc.) can be grouped in an area to allow them to be controlled together.
- **Scene:** Different loads (e. g. dimmer, socket, switching output, shutter, etc.) can be grouped in a scene so that, by calling up a scene, each load assumes the load status stored in the scene.
- **Automatic function:** An automatic function can be used to control the locally connected load (no wireless link) by means of time programs. Depending on the device type, there are further automatic functions in JUNG HOME, such as hotel function, night light function, holiday program or switching thresholds.

Resetting the device to the factory setting



If local operation is disabled with the “operating lock” parameter, the default setting can be reset to only within two minutes after switching on the mains voltage.



If the device has already been added to a project with the JUNG HOME app, it can be reset also to the default setting in one step with the “Delete device” function from the app.

If the device cannot be reset to the default settings with the app or the app is not at hand, the device can be reset as follows:

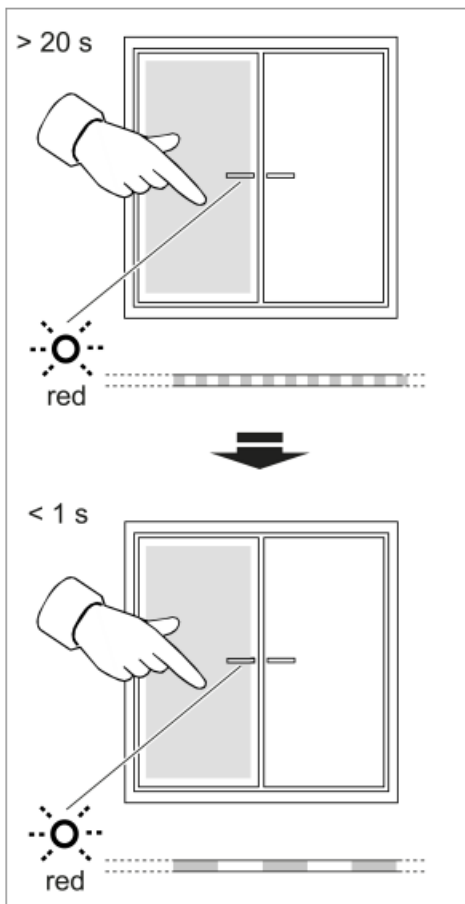


Image 4: Factory reset

- Press the left button over its entire surface for longer than 20 seconds until the status LED quickly flashes red.
- Release the button and press it briefly once again within 10 seconds.
The status LED flashes in red more slowly for approx. five seconds. The device has been reset to the default setting.



After resetting the device to the default setting, it must be removed from the JUNG HOME app provided it has not already been deleted from the app.

Technical data

- **Ambient temperature:** -5 ... +45°C
- **Transport temperature:** -25 ... +70°C
- **Storage temperature:** -5 ... +45°C
- **Relative humidity:** 20 ... 70% (no moisture condensation)
- **Accuracy per month:** ± 13 s
- **Power reserve:** min. 4 h



The time is updated with every connection to the app

- **Radio frequency:** 2.402 ... 2.480 GHz

- **Transmission capacity:** max. 10 mW, Class 1.5
- **Transmission range (inside building):** typ. 30 m



This device includes an integrated battery. At the end of its useful life, dispose of the device together with the battery in accordance with the environmental regulations. Do not throw device into household waste. Consult your local authorities about environmentally friendly disposal. According to statutory provisions, the end consumer is obligated to return the device.

List of functions and parameters

- A device that maps the operating cover and includes its functions and parameters.
- A device that maps the system insert used and its load control with all the corresponding functions and parameters. With a two-channel system insert, two devices are used. With a 3-wire extension system insert, no further device is created.

All devices created in the JUNG HOME app can be used independently and set separately.

JUNG HOME push-button settings (cover)

Parameters	Setting options, Default setting	Explanations
Operating concept	Rocker, button Default setting: rocker	Rocker: The operation of the button at the top or bottom applies to the same load, same area or same disabling function. Operation at the top or bottom usually leads to directly opposite reactions. (E. g. light on/off, brighter/darker, move up/ down) Button: Operation of the button at the top or bottom applies to different loads, areas or scenes. When controlling loads or areas, renewed operation of the same pressure point will lead to opposite reactions (e. g. light on/off, brighter/darker, up/ stop/down).
Behaviour of the status LED when switched on, moving or as orientation LED	Colour selection Default setting: green (orange for button operating concept)	LED colour and brightness** when a load is switched on, a venetian blind / shutter / awning is moving or the LED in the button operating concept is used as orientation LED.
Behaviour of the status LED when switched off or stationary	Colour selection Default setting: orange	LED colour and brightness** when a load is switched off or a venetian blind / shutter / awning is stationary.
Synchronize colour (only push-button, 2-gang)	Off, On Default setting: On	If this parameter is set to Off, the LED colour for the left and right rocker can be set separately. If the parameter is set to On, the colour settings for both rockers are in sync.
Night mode**	Off, On Default setting: Off	In night mode, the status LED is lit up only for max. 5 seconds, not permanently, after pressing the button.
Operating lock	No lock, factory reset lock, operating lock Default setting: no lock	Factory reset lock: prevents resetting on the device and hence the removal from a project and pairing again by unauthorised persons. After the mains voltage returns, the factory reset lock is deactivated for two minutes. Operating lock: prevents normal operation on the device and hence the load from being controlled. This lock can be used, for example, to restrict manual access temporarily. Operation via the app remains possible. The operating lock cannot be deactivated on the device.

** Available by update in the future: You can find notes on updates and dates at www.jung.de/JUNGHOME

Load control settings (system insert)

Settings for automatic functions Ĩ

Parameters	Setting options, Default setting	Explanations
Time programs	Load status, time and weekdays	The load status can be changed at defined times (weekdays and time) depending on the system insert.
Astro timer**	Off, sunrise or sunset Default setting: Off	The astro timer shows the sunrise and sunset times in the course of a calendar year. Depending on the location, load statuses can be changed with the position of the sun, for example to switch on the outdoor lighting at sunset and switch it off again at sunrise.
Astro timer** time shift	0 (off) ... 120 minutes before or after sunrise and sunset Default setting: Off	Astro times represent the sunrise and sunset times in the course of a calendar year. If you want the time program to be executed in the early morning before the start of twilight or only at full brightness, this can be implemented with the "sun-rise" shift. If you want the time program to be executed in the evening at the start of twilight or only at full darkness, this can be implemented with the "sunset" shift. Displaces the load actuation time by the set value.
Astro timer** limit range	Off, earliest time, latest time default setting: off	To narrow the time range of an astro timer down to an earliest and/or latest execution time. For example, the garden lighting can be switched off at the latest at 9:00 pm even if the sun does not set until 10:00 pm.
Set location**	Geographic location	The astro timer in the JUNG HOME devices needs the geographic location of the project to calculate the sunrise or sunset time. The astro timer is calculated once a week for the localised place.

** Available by update in the future: You can find notes on updates and dates at www.jung.de/JUNGHOME

Automatic functions for load output 2 with multi-channel devices will be available in the future by update (you can find information on updates and dates at www.jung.de/JUNGHOME).

Additional settings for switch inserts

Parameters	Setting options, Default setting	Explanations
Switch-on delay	0 s (off) ... 240 min Default setting: Off	Switches on the load after a switch-on command, delayed by the value. Repeated switch-on commands during the current delay do not start the delay again. If the load has not yet been switched on due to the delay, the load remains switched off when a switch-off command arrives.
Switch-off delay	0 s (off) ... 240 min Default setting: Off	Switches off the load after a switch-off command, delayed by the value. A switch-off command during the current delay immediately switches the load off. If the load has not yet been switched off due to the delay when a switch-on command comes, then the load will remain on.

Switch-off warn- ing	Off, OnDefault setting: Off	If the switch-off warning is switched on, the light is not immediately switched off after the run-on time (load) elapses. Triple flashing at an interval of 10 seconds shows that the light will be switched off soon. The run-on time is thereby prolonged by approx. 30 seconds. If a movement is detected by a linked JUNG HOME sensor cover or the load switched on again by operating an extension or by a linked JUNG HOME operating cover during the switch-off warning, the run-on time is restarted and the light remains on.
Run-on time (load)	0 s (off) ... 240 min Default setting: Off	Ensures that the load is switched off after the set run-on time expires instead of remaining permanently switched on after a switch-on command. If a movement is detected by a linked JUNG HOME sensor cover during the run-on time or the operating cover is switched on again by operating an extension or a linked JUNG HOME operating cover, the run-on time is restarted and the light remains on. The load can be switched off early during the current run-on time only if the "Manual switch-off during run-on time" parameter is set to "On" or a disabling function (continuously off) is started.
Manual switch-off during run-on time	Off, OnDefault setting: On	If this parameter is set to "On", it will be possible to switch off the load manually during the current run-on time (load). For automatic staircase lighting controlled by JUNG HOME operating and/or sensor covers, this parameter should be set to "Off" to prevent the light from being switched off by a second person.
Presentation function**	Off, OnDefault setting: Off	The presentation function is used in combination with a linked JUNG HOME presence detector. The presentation function can be switched on or off with the app or a linked JUNG HOME push-button. With the presentation function switched on, the light is switched off and movements detected by a JUNG HOME presence detector are prevented from switching on the light for a defined locking time. Not only sensor signals from JUNG HOME presence detectors, but also sensor signals from JUNG HOME motion detectors, switch-on and switch-off commands via extensions, wireless control with the app and other JUNG HOME devices restart the locking time. The presentation function is automatically ended at the end of the locking time. Alternatively, the presentation function can be switched off manually.
Locking time presentation function**	3 ... 240 min Default setting: 3 min	Defines the locking time during which the light remains off with the "presentation function" switched on. Sensor signals from JUNG HOME presence detectors and JUNG HOME motion detectors, switch-on and switch-off commands via extensions, wireless control with the app and other JUNG HOME devices restart the locking time.

Invert switching output	Off, OnDefault setting: Off	Inverts the switching output from NO contact function (on = switching output closed) to NC contact function (On = switching output open). This parameter only inverts the behaviour of the load output. Neither the switching commands from the JUNG HOME operating or sensor covers nor the display of the switching statuses in the app are taken into account.
Minimum switching repeat time**	100 ms ... 10 sDefault setting: 100 ms	Limits the switching speed of the device by increasing the value, in order to protect the connected load, for example. Only when the set time has elapsed is switching possible again. The last command during the blocking time is executed after a delay. The switching repeat time starts after each switching operation.
Behaviour after mains voltage return	Switched off, switched on, previous statusDefault setting: Off	Behaviour of the load output after the mains voltage returns. Note: Do not use the "switched on" setting in combination with consumers that could lead to danger to life or limb or damage to property.
Disabling function (restraint guidance)*	Deactivated, continuously ON, continuously OFF, for fixed time ON/ OFFDefault setting: deactivated	The disabling function switches the load output to the desired status and blocks it against control by the motion sensor, extension operation, time programs and wireless control with the app and other JUNG HOME devices. The lock applies for an adjustable time or until the disabling function is deactivated again

** Available by update in the future: You can find notes on updates and dates at www.jung.de/JUNGHOME

Additional settings for dimming/DALI inserts

Parameters	Setting options, Default setting	Explanations
Switch-on delay	0 s (off) ... 240 min Default setting: Off	Switches on the load after a switch-on command, delayed by the value. Repeated switch-on commands during the current delay do not start the delay again. If the load has not yet been switched on due to the delay, the load remains switched off when a switch-off command arrives.
Switch-off delay	0 s (off) ... 240 min Default setting: Off	Switches off the load after a switch-off command, delayed by the value. A switch-off command during the current delay immediately switches the load off. If the load has not yet been switched off due to the delay when a switch-on command comes, then the load will remain on.

Switch-off warn- ing	Off, OnDefault setting: Off	If the switch-off warning is switched on, the light is not immediately switched off after the run-on time (load) elapses. The light is first dimmed to minimum brightness within 30 seconds. The run-on time is thereby prolonged by approx.30 seconds. If, during the switch-off warning, a movement is detected by a linked JUNG HOME sensor cover or the warning is switched on again by operating an extension or by a linked JUNG HOME operating cover, the run-on time will be restarted and the light switched back to the switch-on brightness.
Run-on time (load)	0 s (off) ... 240 min Default setting: Off	Ensures that the load is switched off after the set run-on time expires instead of remaining permanently switched on after a switch-on command.If a movement is detected by a linked JUNG HOME sensor cover during the run-on time or the operating cover is switched on again by operating an extension or a linked JUNG HOME operatingcover, the run-on time is restarted and the light remains on.The load can be switched off early during a running run-on time only if the "Manual switch-off during run-on time" parameter is set to "On" or a disabling function (continuous OFF) is started.
Manual switch- off during run- on time	Off, OnDefault setting: On	If this parameter is set to "On", it will be possible to switch off the load manually during the current run-on time (load).For automatic staircase lighting controlled by JUNG HOME operating and/or sensor covers, this parameter should be set to off to prevent the light from being able to be switched off by a second person.
Presentation function**	Off, OnDefault setting: Off	The presentation function is used in combination with a linked JUNG HOME presence detector. The presentation function can be switched on or off with the app or a linked JUNG HOME push-button.With the presentation function switched on, the light is switched off and movements detected by a JUNG HOME presence detector are prevented from switching on the light for a defined locking time.Not only sensor signals from JUNG HOME presence detectors, but also sensor signals from JUNG HOME motion detectors, switch-on and switch-off commands via extensions, wireless control with the app and other JUNG HOME devices restart the locking time.The presentation function is automatically ended at the end of the locking time. Alternatively, the presentation function can be switched off manually.
Locking time presentation function**	3 ... 240 minDefault setting: 3 min	Defines the locking time during which the light remains off with the "presentation function" switched on.Sensor signals from JUNG HOME presence detectors and JUNG HOME motion detectors, switch-on and switch-off commands via extensions, wireless control with the app and other JUNG HOME devices restart the locking time.
Dimming range (min-max)	0 ... 100%Default setting: 5 ... 100%	Defines the dimming range. The minimum dimming value depends mostly on the lamps used and should be determined by trial and error.

Switch-on brightness	5 ... 100% or last value Default setting: 100%	If a value is entered, the light is switched to this brightness by a switch-on command. Last value: When the light is switched on, it is switched to the brightness set last.
Colour temperature range (min-max) (only with DALI insert)	2000 ... 10000 K Default setting : 2,700 K ... 6,500 K	Defines the adjustable colour temperature range. The minimum and maximum value depend on the colour temperature range of the lamp used and can be determined on the basis of its data sheet or by means of trial and error.
Switch-on colour temperature (only with DALI insert)	2000 ... 10000 K Default setting : 2700 K	If a value is entered, the light is switched to this colour temperature by a switch-on command. Last value: When the light is switched on, it is switched to the colour temperature set last.
Warm dimming** (only with DALI insert)	Off, On Default setting: Off	With the function switched on, the colour temperature is changed based on a stored curve when dimming the colour temperature. The colour temperature of the light is increased towards cool white when dimming up and reduced towards warm white when dimming down.
Hotel function**	Off, On Default setting: Off	This comfort function prevents it from becoming completely dark, for example in hotel corridors, when the run-on time expires or the light is switched off manually. With the function switched on, it switches between two brightness values instead of between on and off. When switched on, the light is switched to the switch-on brightness and, when switched off, to the brightness of the hotel function.
Hotel function brightness**	5 ... 100% Default setting: 20%	Defines the reduced brightness to which the light is switched with activated hotel function if the run-on time expires or the light is switched off manually. The entry in percent applies to the maximum brightness of the dimming range.
Night light function**	Off, On Default setting: Off	This convenience function, which can be used with a time program, can ensure that the lighting in the corridor or bathroom is switched on with less brightness at night to prevent unpleasant glaring. With the function switched on, the light is switched by a switch-on command to the set brightness of the night light function, not to the switch-on brightness.
Night light function brightness**	5 ... 100% Default setting: 20%	Defines the reduced switch-on brightness to which the light is switched with the night function activated. The entry in percent applies to the maximum brightness of the dimming range.
Behaviour after mains voltage return	Switched off, switched on, previous status, parametrised value Default setting: switched off	Behaviour of the load output after the mains voltage returns.

Disabling function (restraint guidance)*	Deactivated, continuously ON, continuously OFF, for fixed time ON/ OFFDefault setting: deactivated	The disabling function switches the load output to the desired status and blocks it against control by the motion sensor, extension operation, time programs and wireless control with the app and other JUNG HOME devices. The lock applies for an adjustable time or until the disabling function is deactivated again.
--	--	---

** Available by update in the future: You can find notes on updates and dates at www.jung.de/JUNGHOME

Additional settings for venetian blind inserts

Parameters	Setting options, Default setting	Explanations
Operating mode	Roller shutter Venetian blind AwningDefault setting: Roller shutter	Shutter: A shutter or an awning is controlled for which the Fabric-stretching function is required.Venetian blind: A venetian blind is controlled.Awning: An awning is controlled for which the Fabric-stretching function is required.
Running time	1 s ... 10 minDefault setting: 2 min	Absolute time it takes for the venetian blind, shutter or awning to move from retracted to extended end position.This entry is required to display the current position of the venetian blind, shutter or awning and perform precise positioning movements. This entry is therefore made in the app directly after the JUNG HOME push-button has been added to a project – but can be subsequently corrected.
Slat change-over time	300 ms ... 10 sDefault setting: 2 s	Absolute time for changing-over venetian blind slats
Fabric-stretching time (awning)	0 ms ... 10 sDefault setting: 300 ms	Here, a fabric-stretching time can be set for the operation of awnings.
Inverse operation	Off, OnDefault setting: Off	Inverts the activation of the switching outputs. During inverted operation, the “Up” and “Down” switching outputs are controlled exactly the other way around. This is required, for example, for skylight controllers or may help if a venetian blind / shutter / awning is running in the wrong direction. This parameter inverts only the behaviour of the load outputs, but neither the operation of the JUNG HOME push-button nor the display of the running direction in the app.
Ventilation position and slat position**	Ventilation position: 0 ... 100%Slat position: 0 ... 100%Default setting: 100%	The shutter or the venetian blind stops in this position when moving down. The movement is continued to 100% in the event of another downward movement command.In “venetian blind” operating mode, the slats are additionally set to the entered value.Note: With JUNG HOME, 0% corresponds to “0% closed”, the “upper position” or a completely retracted venetian blind / awning / shutter.With JUNG HOME, 100% corresponds to “100% closed”, the “lower position” or a completely extended venetian blind / awning / shutter.

Minimum motor change-over- time	300 ms ... 10 sDefault setting: 1 s	Minimum interruption time when changing directions. Increasing the minimum change-over time will cause less wear on the motors.
Behaviour after mains voltage returns**	Upward movement, downward movement, stored position, no changeDefault setting: no change	Behaviour of the venetian blind, shutter or awning after the mains voltage returns after a power failure.
Position when the mains voltage returns**	0 ... 100%	Position of the venetian blind, shutter or awning after the mains voltage returns.Note: Applies only if the "stored position" was selected for "Behaviour after mains voltage returns".Note: With JUNG HOME, 0% corresponds to "0% closed", the "upper position" or a completely retracted venetian blind / awning / shutter.With JUNG HOME, 100% corresponds to "100% closed", the "lower position" or a completely extended venetian blind / awning / shutter.
Slat position when the mains voltage returns**	0 ... 100%	Slat position after the mains voltage returns.Note: Applies only if the "stored position" was selected for "Behaviour after mains voltage returns".
Disabling function (restraint, lock-out protection, wind alarm)**	Deactivated, lock-out protection, restraint, wind alarm Duration: continuously or fixed timeDefault setting: deactivated	Depending on the disabling function, the shutter or the awning is locked in the current position or a specific position is approached first when the venetian blind is activated.An active disabling function prevents extension operation, time programs and wireless control with the app and other JUNG HOME devices. The lock applies for an adjustable time or until the disabling function is deactivated again.Lock-out protection: remains in the current positionRestraint guidance: approaches adjustable position 0% ... 100%Wind alarm: approaches adjustable position 0%

** Available by update in the future: You can find notes on updates and dates at www.jung.de/JUNGHOME

Conformity

Albrecht Jung GmbH & Co. KG hereby declares that the radio system type art. no. BT..17101.. and BT..17102.. meets the directive 2014/53/EU. You can find the full article number on the device. The complete text of the EU Declaration of Conformity is available under the Internet address:
www.jung.de/ce

Warranty

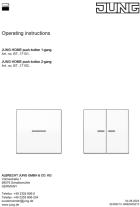
The warranty is provided by the specialist trade in accordance with statutory requirements.

ALBRECHT JUNG GMBH & CO. KG

Volmestraße 1
58579 Schalksmühle
GERMANY

Telefon: +49 2355 806-0
Telefax: +49 2355 806-204

Documents / Resources

	<p>JUNG BT17101 Push Button Switch [pdf] Instruction Manual BT17101 Push Button Switch, BT17101, Push Button Switch, Button Switch, Switch</p>
---	---

References

- [JUNG - Switches and systems](#)
- [JUNG - Switches and systems](#)
- [JUNG - Konformitätserklärung](#)
- [JUNG - JUNG HOME New Items](#)
- [User Manual](#)

Manuals+, Privacy Policy

This website is an independent publication and is neither affiliated with nor endorsed by any of the trademark owners. The "Bluetooth®" word mark and logos are registered trademarks owned by Bluetooth SIG, Inc. The "Wi-Fi®" word mark and logos are registered trademarks owned by the Wi-Fi Alliance. Any use of these marks on this website does not imply any affiliation with or endorsement.