



JTECH SSALPGRIS6 SmartCall Alert Paging System User Manual

[Home](#) » [JTECH](#) » JTECH SSALPGRIS6 SmartCall Alert Paging System User Manual 

JTECH SSALPGRIS6 SmartCall Alert Paging System User Manual



Contents

- 1 Components
- 2 Paging System Setup
- 3 Transmitter Mounting Instructions
- 4 System Configurations
- 5 System Operation
 - 5.1 Alpha Messages
 - 5.2 To Read and Delete Received Messages
- 6 JTECH Pager Cleaning
- 7 Frequently Asked Questions
- 8 FCC Licensing Information (Applies only to users in the United States)
 - 8.1 International Licensing Information
 - 8.2 Radio Compliance (Applies only to users in the United States)
- 9 Documents / Resources
 - 9.1 References
- 10 Related Posts

Components

- 1+ SmartCall Alert Pagers

PN# SALPRG100 (JP2021)



- **Six Unit Charger**

PN# CCKIT6

- **Twelve Unit Charger**

PN# CCKIT12



- **IStation Transmitter**

PN# TXIST



- **Mini Keyboard**

PN# ISKEY



Paging System Setup

Transmitter:

- Unwrap all transmitter components.
- Lock the antenna into the hole in the upper right-hand corner of the transmitter and twisting left to lock in place.
- Plug the power supply with the large tip into a standard 110-220v outlet and plug it into the back of the transmitter.

- Plug in the USB keyboard on the back of the transmitter.

We recommend some type of surge suppressor on the power supply for protection. Power surges are not covered under system warranty!

Pager Setup:

- Locate the 6/12 positions black charging base in a sturdy, out of the way location.
- Use the power supply with the smaller tip and plug it into a standard 110 220v outlet and into either open plug on the charger base, if required, connect the charging bases together using the included jumper wires.

Be sure to plug the jumpers & power supply jacks in all the way.

- Add pagers into the charger slots. You will see a BLUE light on each pager. This light indicates the charging status.

Pager Numbers:

On the top of each pager is your pager number. The pager number also shows digitally on the bottom of the front display screen.

Transmitter Mounting Instructions

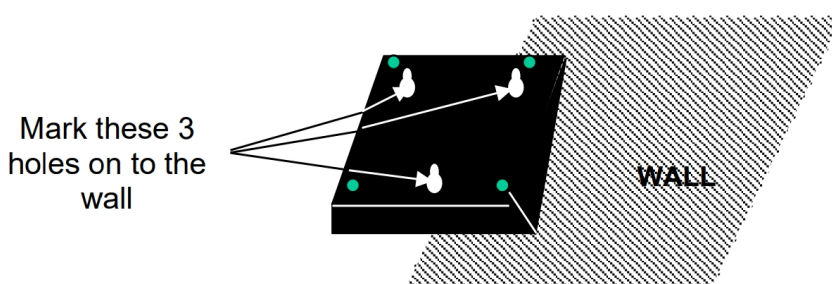
DESKTOP

You can use your transmitter with the 20-degree wedge attached or remove the wedge and lay the transmitter flat.

WALL MOUNT

To mount your transmitter on a wall:

- Remove the plastic bracket (included) under the transmitter unit by unlocking the 2 latches.
- Place the plastic bracket against the wall and with the aid of a pencil, mark the position of the mounting holes.
- (Refer to figure below). Mount the transmitter in a convenient location where a power outlet is available.



- Drill a hole on the marked position. Install the 3 mounting screws (and use anchors where necessary). Ensure that the screws are not fully tightened so that the unit can be easily removed from the wall.
 - Place the transmitter onto the wall (without the plastic bracket). Plug the 2 amp wall transformer into any suitable AC outlet. Plug the power connector into the power jack on the top left-hand side of the unit.
- Transmitter is now ready for use. Be certain to mount the transmitter away from phones, heat, moisture and exposed power circuits. These items can damage your system and shorten transmission range.

System Configurations

System Configuration:

Your system was set at the factory and will function as soon as it is powered up.

Default setup is as follows:

- Current time is set.
- Sleep shutdown is off.
- Range Test is off. (Testing range is only necessary for very large properties)
- Pagers are set to Flash & Vibrate when paged.
- Duty Alert is off.
- Out of Range alert is off.
- Preset Messages OFF (1: White Display Background)
- Default Alpha Message OFF (blank white display background)

This configuration should be satisfactory for most locations. Should the need arise to make any configuration changes follow the instructions below.

Enter Programming Mode (Technical Setup)

1. Press the "SETUP" button on the base station.
2. Enter the password "1379" followed by "enter".
3. If the password is accepted, the display will show "use * to scroll to menu options".
4. Use the "* / Menu" key to scroll through the different menu options.
5. Press "CANCEL" to exit the system programming menu.

Set the Current Time

1. At the "Set Current Time" menu, set the hour then press "ENTER" key.
2. Set the minutes and press "ENTER" key.
3. Use "1 or 2" key to select AM or PM, then press the "ENTER" key.
4. After the correct time is set, press the "ENTER" key to save. Press the "CANCEL" key 2 times to exit the system programming menu.

Set the Sleep Shutdown Time (Factory Default: OFF)

This system has an "ALL SLEEP" function that turns off all battery pagers at once automatically. You Do Not need to use this function for this system as the pagers are completely rechargeable.

To turn this feature ON:

1. At the sleep shutdown menu, press "#/Select" key to turn the sleep shutdown to "ON".
2. Set the minutes and press the "ENTER" key. Use the "1 or 2" key to select AM or PM and then press the "ENTER" key.
3. After the correct time is set, press the "ENTER" key to save. Press the "CANCEL" key to exit the system programming menu.

Do Range Test (Factory Default: OFF)

With this feature you can determine what distance your base station will cover. The factory default setting is OFF. Start walking away from the Transmitter unit, when you have reached a point where ALL 3 pagers do not receive 2 consecutive pages then you are out of range, you must go back several steps until the pager starts alerting again without losing signal.

To start the Range Test, follow the procedure below:

1. Remove a couple of pagers from the charging base to ensure that you have the most accurate reading.
2. At the "Range Test" menu, press "# /Select" key to turn range test "ON".
3. Press "ENTER" to start the range test. As soon as range test is activated you'll notice the pagers flash once every 10 seconds (if you use numeric pagers they will vibrate). Walk around your property. When you reach the point where the pagers do not flash consistently, this is your maximum range. If you would like to increase or decrease your range, exit range test and call 800-321-6221 for more options.
4. Press the "CANCEL" key to stop the range test.
5. Press the "CANCEL" key twice to exit the system-programming menu.

NOTE: The base station has an auto shut off feature that will stop the range test after 15 minutes.

Preset Message (Factory Default: OFF, 1: White Background, Black Font)

Use this feature to change the background color of the display when the pager receives the signal.

1: White

Background: White
Font: Black

3: Blue

Background: Blue
Font: White

2: Green

Background: Green
Font: White

4: Red

Background: Red
Font: White

****Selecting 1 default color when sending a page (Having this feature OFF):**

Preset Message OFF, "ENTER" select 1-4 for the desired background color, "ENTER" to save it, "CANCEL, CANCEL" to exit the menu.

For example,

to alert a pager, simply press the pager number on the transmitter keypad followed by the "SEND" key. press, "11 – SEND" and pager # 11 will signal showing the selected background color 1-4 set in the preset messages.

****Selecting the background color each time you send a page (Having this feature ON):**

Preset Message OFF, press the "#/Select" key to turn Preset Message "ON" "ENTER" select 1-4 for the desired background color, "ENTER" to save it, "CANCEL, CANCEL" to exit the menu.

For example,

to alert a pager 11 with RED background, simply press the pager number 11 on the transmitter keypad followed by the "ENTER" key, press 4, "SEND"

Set the Pager Alert Time or Type:

Use this feature to change the way your pagers alert. To make sure all pagers will have same programming be sure that all pagers are returned to the charging base. The factory default for staff pagers is VIBE ONLY.

1. Remove all the pagers from the chargers or unplug the power supply that is connected to the charging bases.
2. At the "Set Pager Alert" menu, press the "# /Select" key to scroll through the different alert options.
3. After making a selection, press the "Enter" key 3 times. After sending the code, the pagers will now respond with your new selection.
4. Press "CANCEL" key twice to exit the programming menu.
5. Return all the pagers to the charging base or plug the power supply back in.

The pagers are ready to receive the page with the new alert.

Setting the Duty Alert time or type

This feature enables your base station to send a page, at a preset time, to a certain pager to remind them of a duty required of them. For example, a staff person can receive a page every 60 minutes to remind them to check on something. You can assign up to 3 different pagers to be duty alert pagers. The factory default is OFF. To program the duty pager:

1. At the "Duty Alert" menu, press "Enter" to program the first pager. Press the "# /Select" key to turn the duty cycle "ON" followed by the "ENTER" key.
2. Enter the duty pager number and press "ENTER" key.
3. Enter the cycle time (in minutes) and press the "ENTER" key.
4. Enter the numeric message.
5. After setting the duty alert function, press, "ENTER". Display will show "Duty __ saved".
6. Press the "# /Select" to go the second pager or "CANCEL" twice to exit the system- programming menu. Follow the procedure above to program the next pager.

Set the "Out of Range" Alert

With this feature enabled, the pagers will play a melody or voice when taken out of range of the base station to inform the guest that they are too far away and will miss their page. The melody or voice will automatically stop when they step back within range. Be sure that all pagers are returned before turning out of range on or off. The factory default is OFF.

To turn the out of range on:

1. Remove all the pagers from the charging unit or unplug the power supply that is connected to the first charger.
2. At the "Out of Range" menu, press the "# /Select" key to turn the out of range ON.
3. Press the "ENTER" key 3 times. After sending the signal, all the pagers will light up once to tell you that they received the new code.
4. Press "CANCEL" key twice to exit the system-programming menu.
5. Return all the pagers to the charging base or plug the power supply back in. The pagers are ready to receive the page with the out of range ON.

To turn the out of range off:

1. Remove all the pagers from the charging unit or unplug the power supply that is connected to the first charger.
2. At the “Out of Range” menu, press “# /Select” key to turn the out-of range OFF.
3. Press, “ENTER” key 3 times. After sending the signal, all the pagers will light up once to tell you that they received the new code.
4. Press “CANCEL” key twice to exit the system-programming menu.
5. Return all the pagers to the charging base or plug the power supply back in. The pagers are ready to receive the page with the out of range OFF.

System Operation

Handing out the Pagers:

1. Remove a SmartCall Alert pager from the charger.
2. The pager will vibrate to preview what the alert will look like for the staff.
3. Hand the pager to the staff/guest, stating that the pager will go off with they have been paged.

The default page for this system is for the pager to vibrate for 8 seconds. After the pager is finished vibrating it automatically goes back into standby mode waiting for the next page. You can hand the pagers out right from the charging stack (they will “demo” page each time they are removed from the stack) A fully charged pager will function without being recharged for 8 hours. You can always reset a pager by touching it to a charger base stack.

Alpha Messages

To send free style Alpha Message, to Individual pager or All pagers with Group #913:

1. From the transmitter or USB keyboard, press the “pager number” followed by the “ENTER”,
2. Select the desired preset message number 1-4 corresponding to the color of the display you want to be shown,
3. Followed by the “ENTER” key, enter the alpha message followed by the “SEND” key. For example: press 11 (913 for All page), press ENTER, press 3 (for blue display), press ENTER, write the message: “ROOM 14 NEEDS ASSISTANCE”, press SEND and pager 11 (or all pagers if 913 was typed) will signal and displays message “ROOM 14 NEEDS ASSISTANCE” with blue background.

SmartCall Alert Special Feature (OPTIONAL):

This system can send up to 20-custom pre-programmed messages.

- 0 programmed into the IStation transmitter (*1-*10, each with a 128 character limit)
- 10 programmed in the Pager (11-20, each with a 32-character limit)

Note: To create or edit any pre-programmed message you will need a USB keyboard plugged into the transmitter.

Adding or changing the stored Alpha preset messages:

To create a new pre-programmed message, follow the procedure below:

1. At the “Default Alpha Message” menu, press the “#/Select” key to turn the messages “ON”, then press

“ENTER”.

2. Use the “#/Select” key to scroll through the 10 presets until you are at the message you would like to create, then press the “ENTER” key.
3. From the keyboard, type out the message you would like on that preset. Make sure to delete the previous message if you are changing/editing the message. After you have the desired message typed out, press the “ENTER” key on the transmitter.
4. You can now either use the “#/Select” key to scroll to another message for updating or leaving it back to OFF, to select each message when paging or press the “CANCEL” key twice to exit the programming message.

Example messages from the IStation transmitter:

1. Sample Message 1
2. Sample Message 2
3. **EVACUATE BUILDING**
4. Sample Message 4
5. Sample Message 5
6. Sample Message 6
7. Sample Message 7
8. Sample Message 8
9. Sample Message 9
10. Sample Message 10
- 11.

Sending a Pre-Programmed Message

1. From the IStation transmitter, press the “Pager Number” followed by the “ENTER” key.
2. If your transmitter displays “Enter Pre-Set Message”, select the desired preset message number 1-4 corresponding to the color of the display you want to be shown,
3. press the “ENTER” key again, it shows “Enter Message” select the message code (*1-*10 or 11-20) that corresponds to the message you want to send then press the “SEND” key.

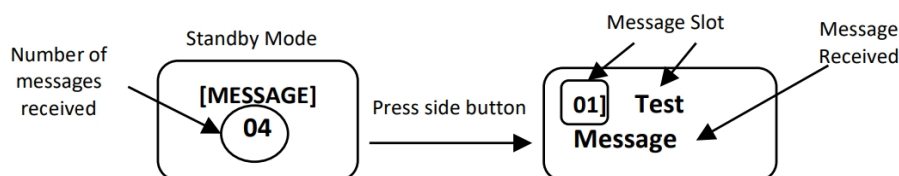
For example:

Press “1, ENTER, 4, *3, SEND” and pager number 1 will alert displaying the message corresponding to message #3 in the IStation (EVACUATE BUILDING) on RED Display (#4).

To Read and Delete Received Messages

To Read Received Messages:

The SmartCall Alert pagers can store up to 20 messages received. The incoming message is automatically stored when received. To read the message received, from standby mode, press the side button once. The last message received will be displayed. Scroll through the messages by pressing the side button.



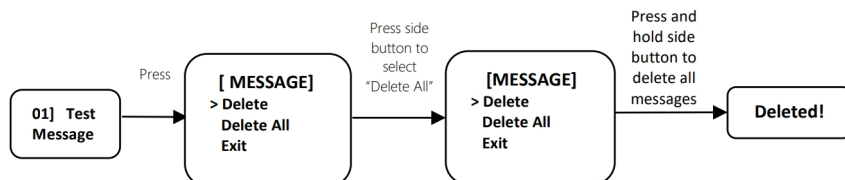
To Delete a Single Message:

Scroll to the message to be deleted by pressing the side button. Press and hold the “side” button and delete menu will appear on the display. Press and hold the “side” button to delete the message.



To Delete All Messages:

Scroll to the first message. Press and hold the “side” button and delete menu will appear on the display. Press the “side” button to select “Delete All”. Press and hold the side button to delete all messages in memory.



JTECH Pager Cleaning

Due to the nature of the Polycarbonate materials used when manufacturing our products, it is imperative that specific instructions are followed closely to ensure that all JTECH products remain in optimum condition.

The safest and MOST EFFECTIVE way to clean our products is to wipe them down thoroughly with a damp cloth and allow them to air dry.

If disinfecting is required, the following are the only JTECH approved solutions to be used.

1. Sodium Hypochlorite*

Any product with no more than 5% Sodium Hypochlorite*. This product can be found at www.grainger.com. It is listed as Clorox Healthcare -Bleach Germicidal Cleaner. Item # 6VDE6. Similar products can be used.

2. Hydrogen Peroxide*

Any product with no more than 30% hydrogen peroxide**. This product can be found at www.grainger.com. It is listed as Tough Guy Hydrogen Peroxide Cleaner. Item # 12M180. Similar products can be used.

3. White Vinegar

Vinegar is a great natural solution for disinfecting and cleaning. Use up to a 10% solution of white vinegar – acetic acid and water.

* These products are listed by the CDC as products that meet EPA’s criteria for use against SARS-CoV-2, the novel coronavirus that causes the disease COVID-19.

WARNING: Using the wrong/not approved cleaner or disinfectant may cause the material to weaken, crack, become brittle, and possibly void the product warranty.

Frequently Asked Questions

The pagers vibrate when first removed from the charger. Should this happen?

Each pager when removed from the charger will display one demonstration page.

We have lost some pagers; how do we replace them?

Online at <http://www.jtech.com/support>

Select the Pager Repair/Renumbering Form or contact us at wecare@jtech.com or via phone at 800.321.6221.

What is the expected battery life? Can I buy replacements?

JTECH batteries should last up to 2 years with proper use. Try charging the pager before considering replacement batteries. If after 4 hours the pager charging light still displays amber, contact JTECH to order replacement batteries. Or Click Here to purchase on-line.

You can also use the battery from a working pager to test a non-working pager. If the pager works with the second pager, replace the battery.

What is the process if I need to repair a pager?

- Obtain a repair form from the JTECH website, <http://www.jtech.com/support>
- Ship pagers needing repair with a copy of the form to the address listed below.
- Make sure your company information is on all correspondence including the outside of the shippingbox.
- Ship in a traceable manner. Insure the package

JTECH is not responsible for packages lost in transit. Please save the tracking number.

Shipping address:

JTECH, an HME Company
1400 Northbrook Parkway #320
Suwanee, GA 30024
ATTN: Repairs

FCC Licensing Information (Applies only to users in the United States)

JTECH paging systems operate on radio frequencies that are regulated by the Federal Communications Commission (FCC). In order to transmit on these frequencies, you are required to have a license issued by the FCC. Under current FCC policy, you may operate the equipment under JTECH, an HME Company, a/k/a HME Wireless' FCC license described below:

Licensee: HME Wireless, Inc., d/b/a JTECH an HME Company Call Sign: WQKJ800

Area of operation: United States nationwide, including Hawaii and Alaska, and United States Territories

Frequencies (MHz): 457.525, 457.550, 457.575, 457.600, 467.875, 467.900, 467.925

Control point: 1400 Northbrook Parkway, Suite 320, Suwanee, GA 30024

If you require a copy of the license, you can contact JTECH, an HME Company, or obtain one from the FCC web site (www.fcc.gov). You may, however, want to apply for your own FCC license. Whether you use JTECH, an

HME Company's, FCC license or obtain your own, you are responsible for complying with the FCC rules and requirements applicable to the JTECH paging system, particularly those that deal with private land mobile radio services. See 47 CFR Part 90.

Changes or modifications not expressly approved by JTECH, an HME Company, may void the user's authority granted by the FCC to operate this radio and should not be made. To comply with FCC requirements, transmitter adjustments should be made only by or under the supervision of a person certified as technically qualified to perform transmitter maintenance and repairs in the private land mobile and fixed services as certified by an organization representative of the user of those services. Replacement of any transmitter component (crystal, semiconductor, etc.) not authorized by the FCC equipment authorization for this radio could violate FCC rules.

International Licensing Information

(Applies only to users outside of the United States)

JTECH paging and radio systems operate on radio frequencies that are regulated by international treaties. In order to transmit on these frequencies, you are required to have a license issued by the licensing authority in the country of operation. To obtain information on licensing, you should contact the relevant licensing authority in the country in which you are operating.

Note: Use of these products outside the country where it was intended to be distributed is subject to local government regulations and may be prohibited.

Radio Compliance (Applies only to users in the United States)

THESE DEVICES COMPLY WITH PARTS 90 AND 15 OF THE FCC RULES, AS APPLICABLE. OPERATION IS SUBJECT TO THE CONDITION THAT THE DEVICES DO NOT CAUSE HARMFUL INTERFERENCE. MODIFICATION OR CHANGES NOT EXPRESSLY APPROVED BY THE MANUFACTURER COULD VOID THE USER'S AUTHORITY TO OPERATE THE EQUIPMENT.

IMPORTANT NOTE: To maintain compliance with Radio Frequency exposure guidelines, the transmitter and antenna must be at least 8 inches (20 centimeters) from any person.

Your radio generates radio frequency electromagnetic energy during transmission mode. The radio is designed for and classified as "General Population" and may be used in any location as long as the separation distance listed above is maintained.

To ensure that your exposure to radio frequency electromagnetic energy is with the FCC allowable limits for occupational use, always follow these guidelines. Use ONLY authorized accessories with the equipment. Use of unauthorized accessories can cause the FCC Radio Frequency Exposure compliance requirements to be exceeded.

www.jtech.com
wecare@jtech.com



Documents / Resources



[JTECH SSALPGRIS6 SmartCall Alert Paging System](#) [pdf] User Manual
SSALPGRIS6, SmartCall Alert Paging System, SSALPGRIS6 SmartCall Alert Paging System,
Alert Paging System, Paging System

References

- [FCC Federal Communications Commission | The United States of America](#)
- [Grainger Industrial Supply - MRO Products, Equipment and Tools](#)
- [JT Support](#)