



JTECH GuestCall Extreme Coaster Paging System User Guide

[Home](#) » [JTECH](#) » JTECH GuestCall Extreme Coaster Paging System User Guide 

Contents

- [1 JTECH GuestCall Extreme Coaster Paging System](#)
- [2 Components](#)
- [3 Equipment Setup](#)
- [4 System Operation](#)
- [5 Renumbering your pagers](#)
- [6 Documents / Resources](#)
- [7 Related Posts](#)



JTECH GuestCall Extreme Coaster Paging System

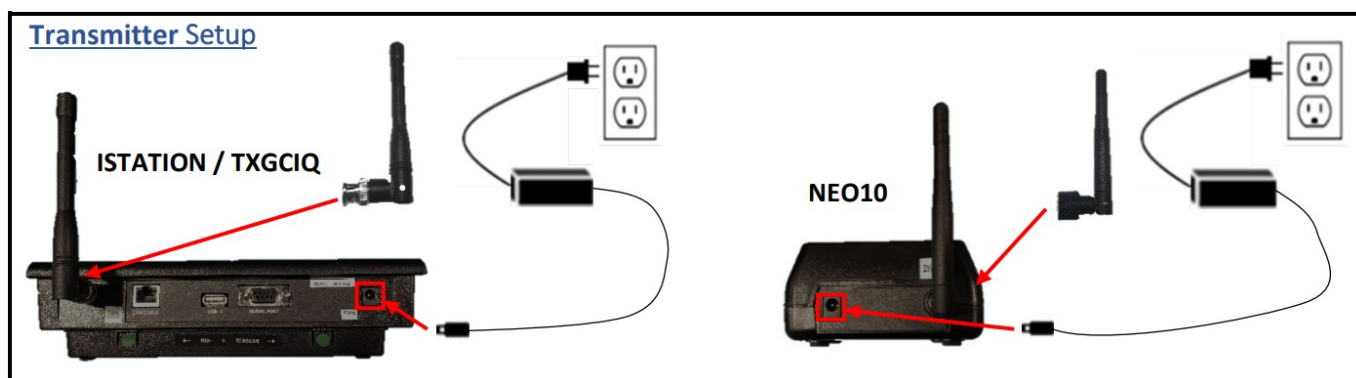


Components



1. Transmitter with power supply & antenna
2. Coaster Charging Base with power supply
3. GuestCall Extreme Coaster Pagers

Equipment Setup

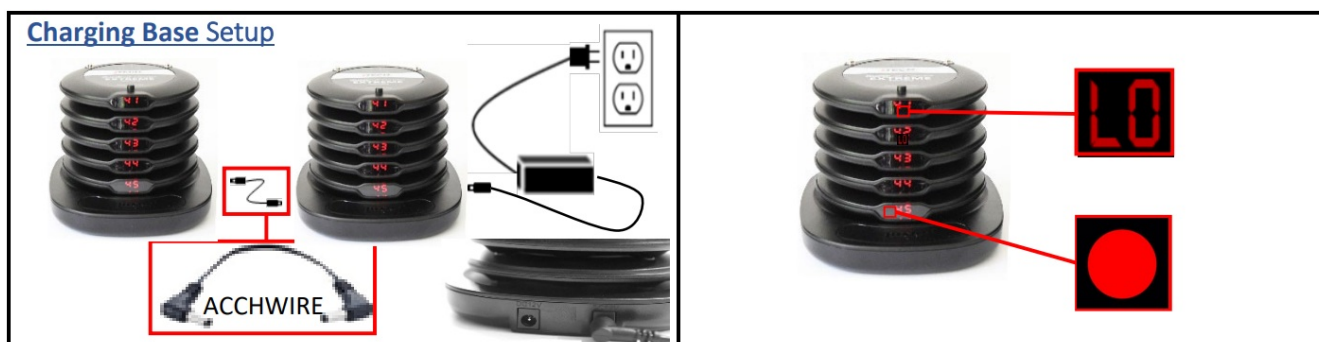


- **Step 1**

Connect the antenna to the transmitter. Twist to lock in place.

- **Step 2**

Plug the power supply (ACCHPS) into the transmitter and then into a standard 110-240v outlet.



- **Step 3**

Plug the power supply (ACCHPS) into the charging base and then into a standard 110-240v outlet. For systems with more than 15 pagers (up to 60 pagers total), use the jumper cable (ACCHWIRE) to daisy chain the charging bases together.

- **Step 4**

Add pagers to the charging base. You will see a RED light on each page. This light indicates the charging status.

- "LO" indicates battery below 20%
- Solid RED indicates the pager is charging

NOTE:

A surge protector is recommended for all Transmitters and Charging Bases.

System Operation

Handing out the pagers:

Give the guest a pager. Tell the guest that the pager will signal when they are needed. After the pager receives the alert, it automatically goes back into standby mode, waiting for the next page. Pagers can be given out directly from the charging base (they will "demo" page each time they are removed from the charging base) or you can simply store them in a basket and hand them out. A fully charged pager will function all day without being recharged. You can reset a pager by placing it back on the stack of pagers on the charging base.

Paging the guest:

When the guest is needed, press the pager number on the transmitter keypad followed by the "SEND" key. For example, press "28-SEND" and pager number 28 will signal.



Renumbering your pagers

You must have a standalone transmitter to reprogram a JTECH digital pager. If your transmitter is integrated with a 3rd party software solution, you will need to use the STATION transmitter for this function. All programming commands are sent over the air and can only be programmed one-pager at a time.

To change the number on a pager, follow the procedure below:

Once the pager is placed in the charger you only have 40 seconds to complete the process. If more than 40 seconds have elapsed, re-place the pager on the charging base.

1. Ensure the charger is plugged in.
2. Place one-pager at a time on the charging base.
3. From the transmitter, enter the OLD pager number, then press "ENTER".
4. When the display says, "Enter Message", press "* /MENU" followed by the NEW 3-DIGIT pager number. (The display will show either a "*" (star) or "[" (open bracket)).
5. Press "SEND" – The new pager number will be displayed.

For example: Changing pager #6 to pager #28

- Place #6 on the charger.
- From the transmitter, enter 6 and then press the "ENTER" key.
- Press "*028" (Note: 3-Digit number is required) and then press the "SEND" key.

Documents / Resources

	<p>JTECH GuestCall Extreme Coaster Paging System [pdf] User Guide GuestCall Extreme Coaster Paging System, Coaster Paging System, Paging System, GuestCall Extreme Coaster, Extreme Coaster</p>
--	---