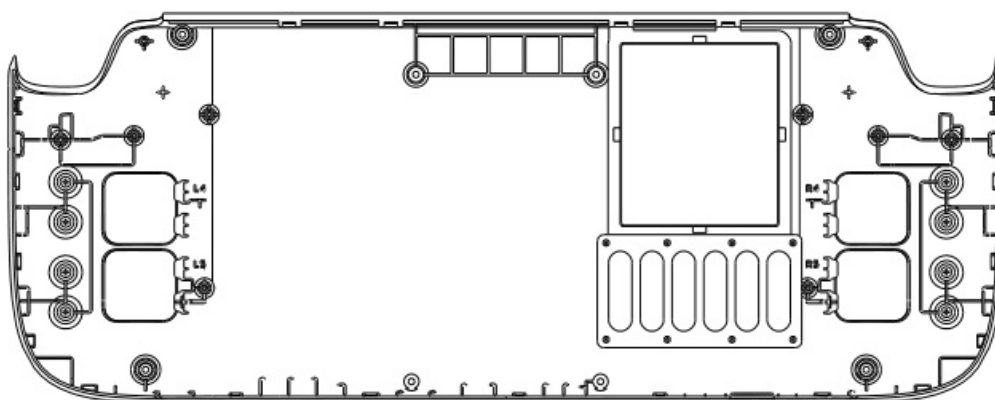




# JSAUX PC0106A Transparent Back Plate RGB Version User Guide

[Home](#) » [JSAUX](#) » JSAUX PC0106A Transparent Back Plate RGB Version User Guide 

JSAUX PC0106A Transparent Back Plate  
RGB Version User Guide

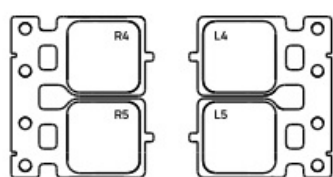
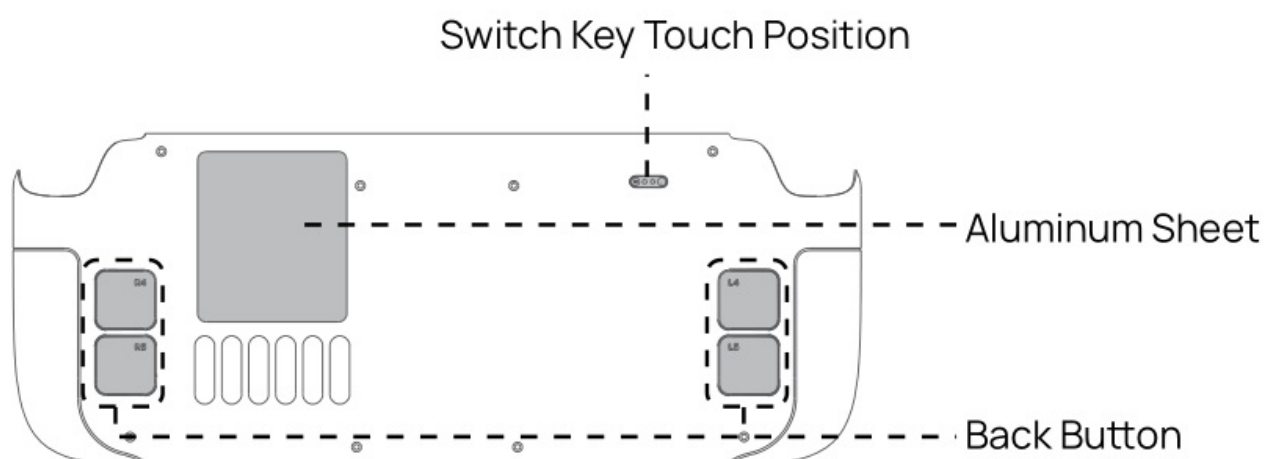
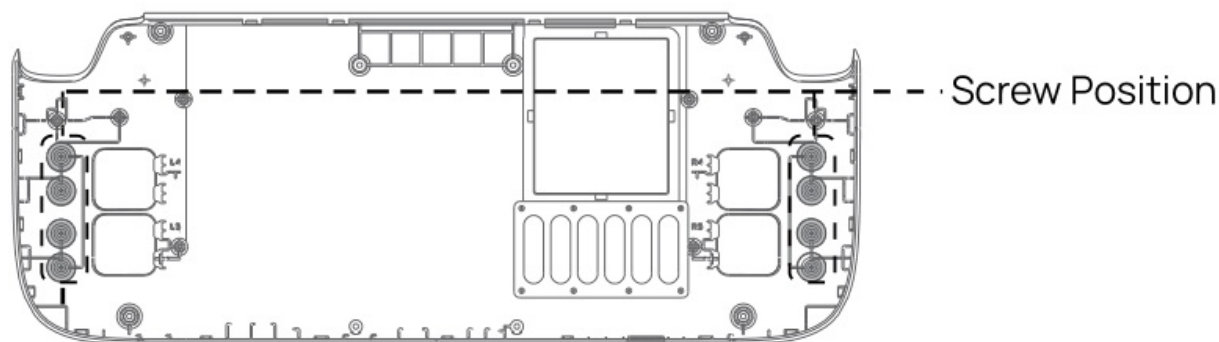


---

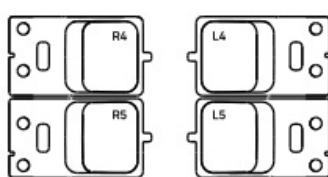
PC0106A

## RGB Back Plate for Steam Deck

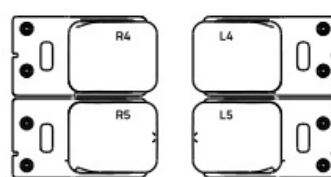




Original Edition Key



Lower Key



Higher Key

## Attention

⚠ Regarding the changes in the maintenance policy of the whole machine caused by teardown, please refer to the official information provided by VALVE.

⚠ Before you begin, completely power down and unplug all cables from your Steam Deck. Remember to follow general electrostatic discharge (ESD) safety procedures while repairing the device.

⚠ To minimize risk of damage, turn on your Steam Deck and allow the battery to discharge below 25% before starting your repairs. A charged lithium-ion battery can be very dangerous if accidentally punctured.

⚠ Before starting this guide, power down your Steam Deck and unplug any cables.

⚠ As an extra precaution, Valve recommends putting your Steam Deck into battery storage mode within the BIOS before starting any internal repairs.

- ⚠ If you have a microSD card installed, make sure to remove it before opening the Steam Deck.
- ⚠ Throughout this repair, keep track of each screw and make sure it goes back exactly where it came from to avoid damaging your Steam Deck.
- ⚠ Do not touch the aluminum alloy back cover when the game machine is in use to avoid burns.
- ⚠ Thermal silicone grease can be heated and softened with a heat gun or air blower before use to ensure fit.
- ⚠ If the key is stuck after the back cover is installed, you can loosen the screws near the key position.



1. Before installing the new rear cover, check whether the FPC link between the light board and the motherboard is normal and ensure that the power can be turned on properly before installation.
2. When replacing the key, pay attention to the left and right positions of the light board.

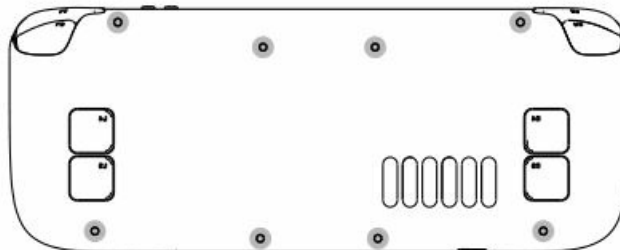
## Installation

### 1. Select the Button

We have included three keys with different heights and feel, you can use screws to fix them on the back cover, fully feel the difference in feel and choose the most suitable height for you.

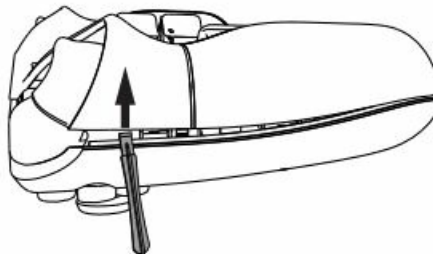
### 2. Remove the back cover screws

Use a Phillips driver to remove the eight screws securing the back cover.



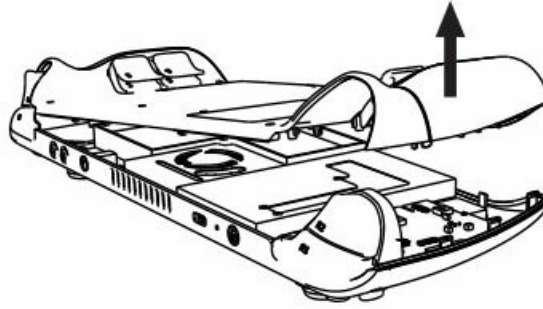
### 3. Unclip the back cover

Insert an opening pick into the thin gap between the back cover and the front shell, along the edge of the right grip.



### 4. Remove the back cover

Grip the back cover at the opening you just created and pull it up and away from the device to unclip the long edges.



## 5. Install new back cover

Align the new back cover with the back buttons fixed on the buckle on the machine, press to close the buckle, and then screw back the screws on the back of the machine in the order of disassembly.

## Parameters

Brand: JSAUX

Product Model: PC0106A

Product Name: RGB Back Plate for Steam Deck

Product Material: ABS+PC+Aluminium Alloy

Product Size: About 150(L) x 117(W) x 32(H)mm

Product Weight: About 127.5g

Battery Life: About 2h, battery life varies with different lighting modes

Charging Time: About 30min

Battery Capacity: 150mAh

## Packing Accessories

(×1) RGB Back Plate for Steam Deck

(×4) Higher Key

(×1) Magnetic Charging Cable

(×2) Original Edition Key

(×4) Lower Key

## Tools

Thank you for choosing JSAUX.

Focused on the area of 3C digital products, JSAUX is a specialized brand engaging in the production of charger, adapter, HDMI cable, audio and video cable etc. In line with the core value of "Connect more. power more.": our company aims to develop products that connect more digital life scenes and to make digital life more convenient for global consumers. Our values are also reflected in the way we do business, always manufacturing practical and

innovative products of reliable quality in diverse 3C categories.

If you have any question about our products or our services, please feel free to contact us. Looking forward to your consultation.

Website: [www.jsaux.com](http://www.jsaux.com)

Facebook: [@jsaux.fans](https://www.facebook.com/jsaux.fans)


Instagram: [@jsaux\\_official](https://www.instagram.com/jsaux_official)

Twitter: [@jsauxofficial](https://twitter.com/jsauxofficial)

## Contents

- [1 Documents / Resources](#)
- [1.1 References](#)

## Documents / Resources

	<p><a href="#">JSAUX PC0106A Transparent Back Plate RGB Version</a> [pdf] User Guide</p> <p>PC0106A Transparent Back Plate RGB Version, PC0106A, Transparent Back Plate RGB Version, Back Plate RGB Version, Plate RGB Version, RGB Version</p>
---	---

## References

- [User Manual](#)

[Manuals+](#), [Privacy Policy](#)

This website is an independent publication and is neither affiliated with nor endorsed by any of the trademark owners. The "Bluetooth®" word mark and logos are registered trademarks owned by Bluetooth SIG, Inc. The "Wi-Fi®" word mark and logos are registered trademarks owned by the Wi-Fi Alliance. Any use of these marks on this website does not imply any affiliation with or endorsement.