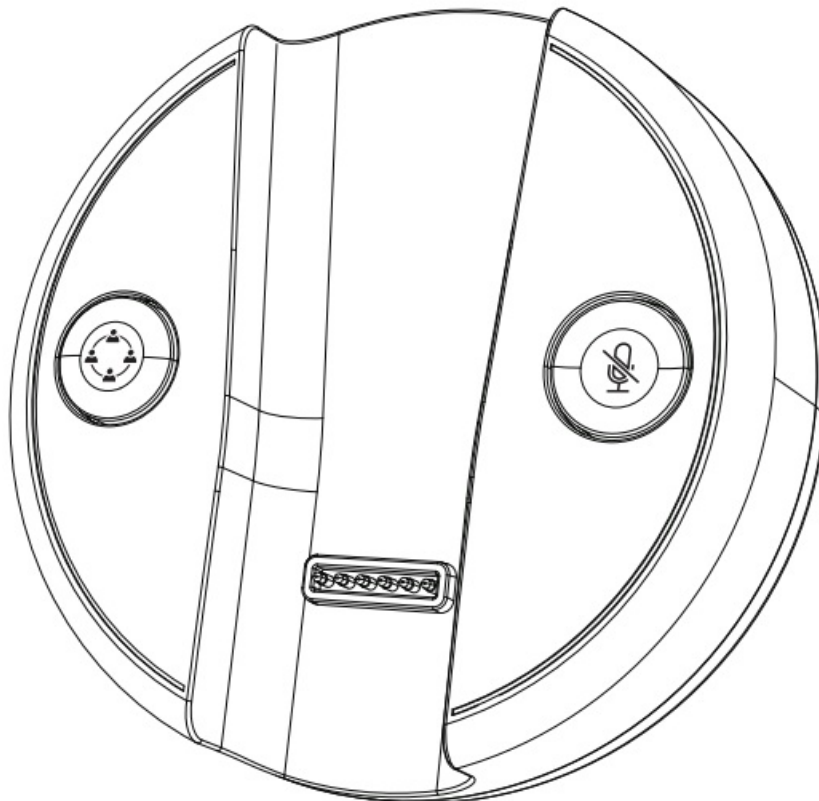


JPL BL-055-DT Desk Base with Microsoft Teams Optimised Softphone Button Instruction Manual

[Home](#) » [JPL](#) » JPL BL-055-DT Desk Base with Microsoft Teams Optimised Softphone Button Instruction Manual



JPL BL-055-DT Desk Base with Microsoft Teams Optimised Softphone Button



Contents

- 1 Thank You
- 2 Operating System
- 3 JPL Gateway
- 4 Features
- 5 Installation
- 6 Operation
- 7 Adjusting The Speaker Volume and Microphone Levels
- 8 Using The Softphone Button
- 9 Customer Support
- 10 Documents / Resources
 - 10.1 References
- 11 Related Posts

Thank You

Thank you for choosing the BL-055-DT desk base. Use this desk base in conjunction with the BL-055+P or the BL-056+P to give desk top control to your headset and easy access to your softphone. The BL-055-DT is optimised to work 'out of the box' with Microsoft Teams.

Operating System

- a) Windows 7, Windows 8, 8.1, Windows 10 (Recommended).
- b) **Software:** No need for additional software to install.

JPL Gateway

For the Call answer/end control to work and to create a full softphone experience with Avaya One-x agent, Avaya One-X Communicator, Workplace Client, Cisco Jabber, Bria, 3CX, Mitel Micollab, MicroSIP, Broadsoft and several other softphones, you need to download a small software program from <https://www.jpltele.com/resources/jpl-gateway/>.

Alternatively you can use your mouse to answer/end a call via your softphone.

Features

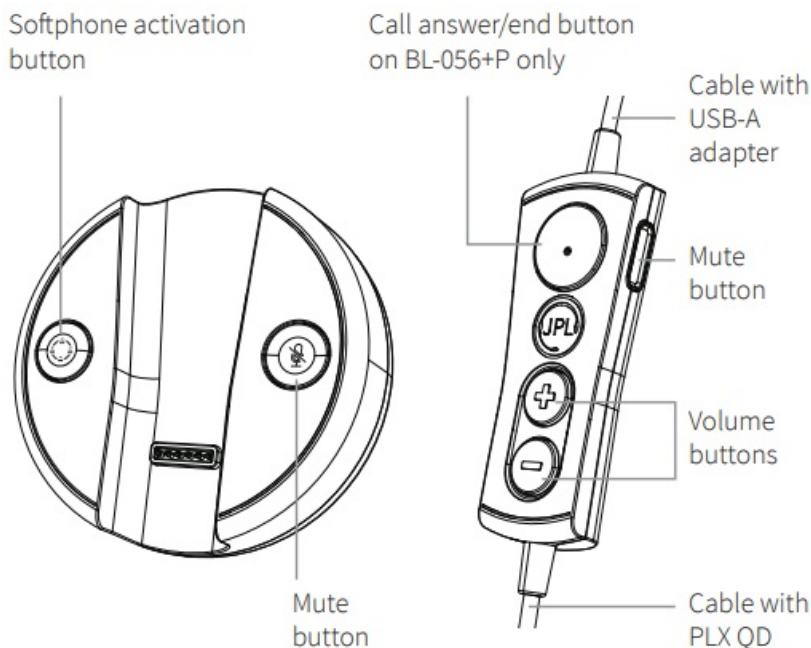
- a) USB plug & play chip
- b) Complete digital sound card
- c) Clear live voice transmission with VoIP
- d) Digital in-line receive volume control
- e) In-line microphone (Tx) MUTE with LED indicator (Red)
- f) Call On/Off with LED indicator (Green/Red)
- g) Softphone LED indicator (White)
- h) Headset QD (Quick-Disconnect) connector
- i) Softphone activation button
- j) **Operation Temperature:** 0 °C ~ 40 °C

Installation

Connecting the USB adapter to your computer's USB port is a simple plug & play process. No other action is required.

Operation

- a) In-line microphone mute button:** When you press the microphone mute button while recording, dictating or speaking live, the other party will no longer hear your voice.
- b) In-line receive volume control:** During an external call, adjust the digital receive volume control up or down to suit your personal preference.
- c) Call answer/end control:** This function is used with various softphones for call answer/end. (See point 6).
- d) Docking on cradle:** When the in-line controller is docked on the cradle, Teams and Mute buttons are available with its' own light indication.



Adjusting The Speaker Volume and Microphone Levels

Test that the speaker volume in your headset is working and set at a comfortable level by adjusting the RX volume buttons (Volume up for +, Volume down for -).

The audio tab in your computer's 'Properties' window also lets you adjust the Playback sound or Record microphone levels. The volume slider adjusts the Playback sound or microphone levels. Make sure that the volume slider is set in the middle of the control and the 'Mute' box is not checked.

Note: These controls adjust the volume, however, many other applications contain their own volume controls. These independent applications may override the Windows controls and work independent of the USB Adapter sound controls.

Using The Softphone Button

When the BL-055+P or BL-056+P bottom lead is placed into the BL-055-DT desk base cradle you can press the softphone button. The USB cord allows connection to your softphone.

The in-line cord detects the incoming call, and allows you to answer and finish a call.

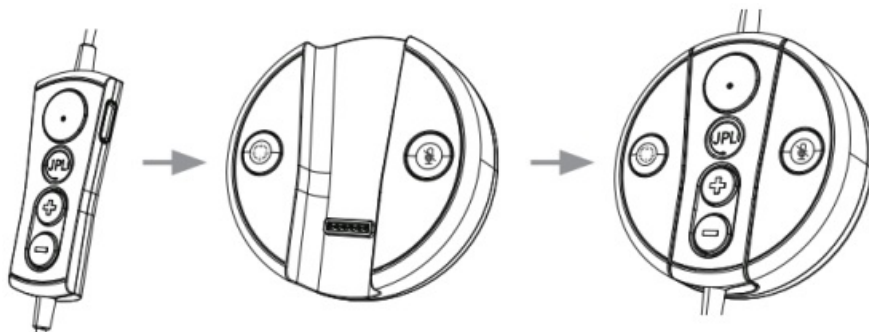
When your softphone is active, the light on the softphone button will light up. When the softphone light is on, the in-line cord is then ready to work with your softphone.

Your softphone application window will pop up when the softphone button on the desk base is pressed.

When there is an incoming softphone call, the softphone button light will flash, and you can take a call by pressing

the button.

During a call, you can mute/unmute the call by pressing the mute button. The mute status will synchronize with your softphone mute.



Customer Support

BL-055-DT

Desk Base with Microsoft Teams Optimised Softphone Button Works in conjunction with the BL-055+P or BL-056+P bottom leads.


JPL Telecom Limited, Units 1 & 2, Church Close Business Park, Todber, Sturminster Newton, Dorset, DT10 1JH, ENGLAND.

Telephone: +44 (0)1258 820100


www.jpltele.com



Documents / Resources

	<p>JPL BL-055-DT Desk Base with Microsoft Teams Optimised Softphone Button [pdf] Instruction Manual</p> <p>BL-055 P, BL-056 P, BL-055-DT Desk Base with Microsoft Teams Optimised Softphone Button, BL-055-DT, Desk Base with Microsoft Teams Optimised Softphone Button, Microsoft Teams Optimised Softphone Button, Teams Optimised Softphone Button, Optimised Softphone Button, Softphone Button</p>
---	--

References

-  [One moment, please...](#)
- [User Manual](#)

[Manuals+](#), [Privacy Policy](#)

This website is an independent publication and is neither affiliated with nor endorsed by any of the trademark owners. The "Bluetooth®" word mark and logos are registered trademarks owned by Bluetooth SIG, Inc. The "Wi-Fi®" word mark and logos are registered trademarks owned by the Wi-Fi Alliance. Any use of these marks on this website does not imply any affiliation with or endorsement.