

JOYTECH RT03 Remote Controller



# JOYTECH RT03 Remote Controller Instructions

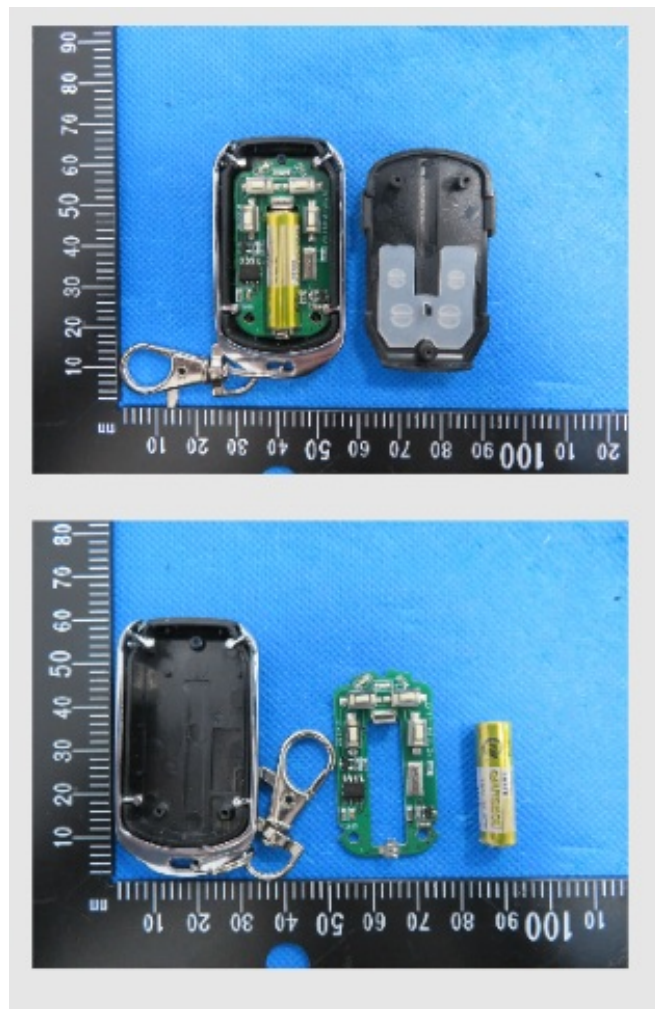
[Home](#) » [Joytech](#) » JOYTECH RT03 Remote Controller Instructions 

## Contents

- [1 JOYTECH RT03 Remote Controller](#)
- [2 Product Information](#)
- [3 Product Usage Instructions](#)
- [4 RT03 Remote controller](#)
- [5 FCC Caution](#)
- [6 Documents / Resources](#)
  - [6.1 References](#)
- [7 Related Posts](#)



**JOYTECH RT03 Remote Controller**



## Product Information

### Specifications

- **Product:** RT03 Remote Controller
- **Technology Parameter:**
  - **Working voltage:** 3V
  - **Working current:** 12mA
  - **Transmitting frequency:** 315M
  - **Frequency deviation:** 150K
  - **Transmit distance:** 30m
- **Applications:** Gate Operator

### Product Usage Instructions

1. Ensure the remote controller is powered with a 3V battery.
2. Point the remote controller towards the gate operator within a distance of 30m.
3. Press the desired button on the remote controller to transmit the signal at a frequency of 315M with a frequency deviation of 150K.
4. The gate operator should receive the signal and act accordingly.

### FCC Caution

This device complies with part 15 of the FCC Rules. Operation is subject to the following two conditions:

1. This device may not cause harmful interference.
2. This device must accept any interference received, including interference that may cause undesired operation.

Any changes or modifications not expressly approved by the party responsible for compliance could void the user's authority to operate the equipment.

The device has been evaluated to meet general RF exposure requirement. The device can be used in a portable exposure condition without restriction.

## FAQ

### 1. Q: How do I change the battery in the RT03 Remote Controller?

A: To change the battery, follow these steps:

1. Locate the battery compartment on the remote controller.
2. Open the compartment using a suitable tool.
3. Remove the old battery and replace it with a new 3V battery.
4. Close the compartment securely.

## RT03 Remote controller

### Technology Parameter:

- **Working voltage:** 3V
- **Working current:**  $\leq 12\text{mA}$
- **Transmitting frequency:** 315M
- **Frequency deviation:** 150K
- **Transmit distance:** 30m
- **Applications** gate operator



## FCC Caution

This device complies with part 15 of the FCC Rules. Operation is subject to the following two conditions:

- 1. This device may not cause harmful interference, and
- 2. This device must accept any interference received, including interference that may cause undesired operation.

Any Changes or modifications not expressly approved by the party responsible for compliance could void the user's authority to operate the equipment.


**Note:** This equipment has been tested and found to comply with the limits for a Class B digital device, pursuant to part 15 of the FCC Rules. These limits are designed to provide reasonable protection against harmful interference in a residential installation.

This equipment generates uses and can radiate radio frequency energy and, if not installed and used in accordance with the instructions, may cause harmful interference to radio communications. However, there is no guarantee that interference will not occur in a particular installation.

- If this equipment does cause harmful interference to radio or television reception, which can be determined by turning the equipment off and on, the user is encouraged to try to correct the interference by one or more of the following measures:
  - Reorient or relocate the receiving antenna.
  - Increase the separation between the equipment and receiver.
  - Connect the equipment into an outlet on a circuit different from that to which the receiver is connected.
  - Consult the dealer or an experienced radio/TV technician for help.

The device has been evaluated to meet general RF exposure requirement. The device can be used in portable exposure condition without restriction.

## Documents / Resources

	<p><a href="#">JOYTECH RT03 Remote Controller</a> [pdf] Instructions</p> <p>2AZHH-RT03, 2AZHHRT03, RT03, RT03 Remote Controller, Remote Controller, Controller</p>
---	--

## References

- [User Manual](#)

[Manuals+](#), [Privacy Policy](#)

This website is an independent publication and is neither affiliated with nor endorsed by any of the trademark owners. The "Bluetooth®" word mark and logos are registered trademarks owned by Bluetooth SIG, Inc. The "Wi-Fi®" word mark and logos are registered trademarks owned by the Wi-Fi Alliance. Any use of these marks on this website does not imply any affiliation with or endorsement.