



Joysway 8807 2.4Ghz RTR Binary Micro RC Catamaran Sailboat Instruction Manual

[Home](#) » [Joysway](#) » Joysway 8807 2.4Ghz RTR Binary Micro RC Catamaran Sailboat Instruction Manual 

Contents

- 1 Joysway 8807 2.4Ghz RTR Binary Micro RC Catamaran Sailboat
- 2 CONTENTS OF SET
- 3 ITEMS REQUIRED FOR COMPLETION
- 4 FCC STATEMENT
- 5 BASIC BOAT TERMINOLOGY
- 6 INSTALL ALKALINE BATTERIES IN YOUR TRANSMITTER
- 7 DISPLAY STAND ASSEMBLY
- 8 TAKE BOAT & SAILS OUT FROM BOX
- 9 INSTALL ALKALINE BATTERIES IN RECEIVER
- 10 TRANSMITTER & RECEIVER BINDING
- 11 PREPARATIONS FOR SAILING
- 12 SPARE PART LIST
- 13 Documents / Resources
 - 13.1 References



Joysway 8807 2.4Ghz RTR Binary Micro RC Catamaran Sailboat



IMPORTANT

1. This is not a toy. Assembly and operating of this boat requires adult supervision.
2. Please take time to read the instructions carefully and completely before attempting to operate your model.
This manual contains the instructions you need to safely build, operate and maintain your RIC sailboat.

CONTENTS OF SET

CONTENTS OF SET



BINARY catamaran hull
(Servos, receiver &
battery box pre-installed)



Sails & mast & booms set



Two PVC hatch sets



2.4GHz 2CH transmitter
(two joystick are included
in battery compartment)



CROSS-HEAD SCREWDRIVER - 1PC
(NOT INCLUDED)



Boat stand set

IMPORTANT TIPS

Jib boom and main boom are installed with silicone O rings. Adjust rings position on booms so as to adjust jib sail and main sail closing and opening angle easily.

ITEMS REQUIRED FOR COMPLETION

- 4 x "AA" alkaline batteries for transmitter (not included)
- 3 x "AAA" alkaline batteries for receiver (not included)

FCC STATEMENT

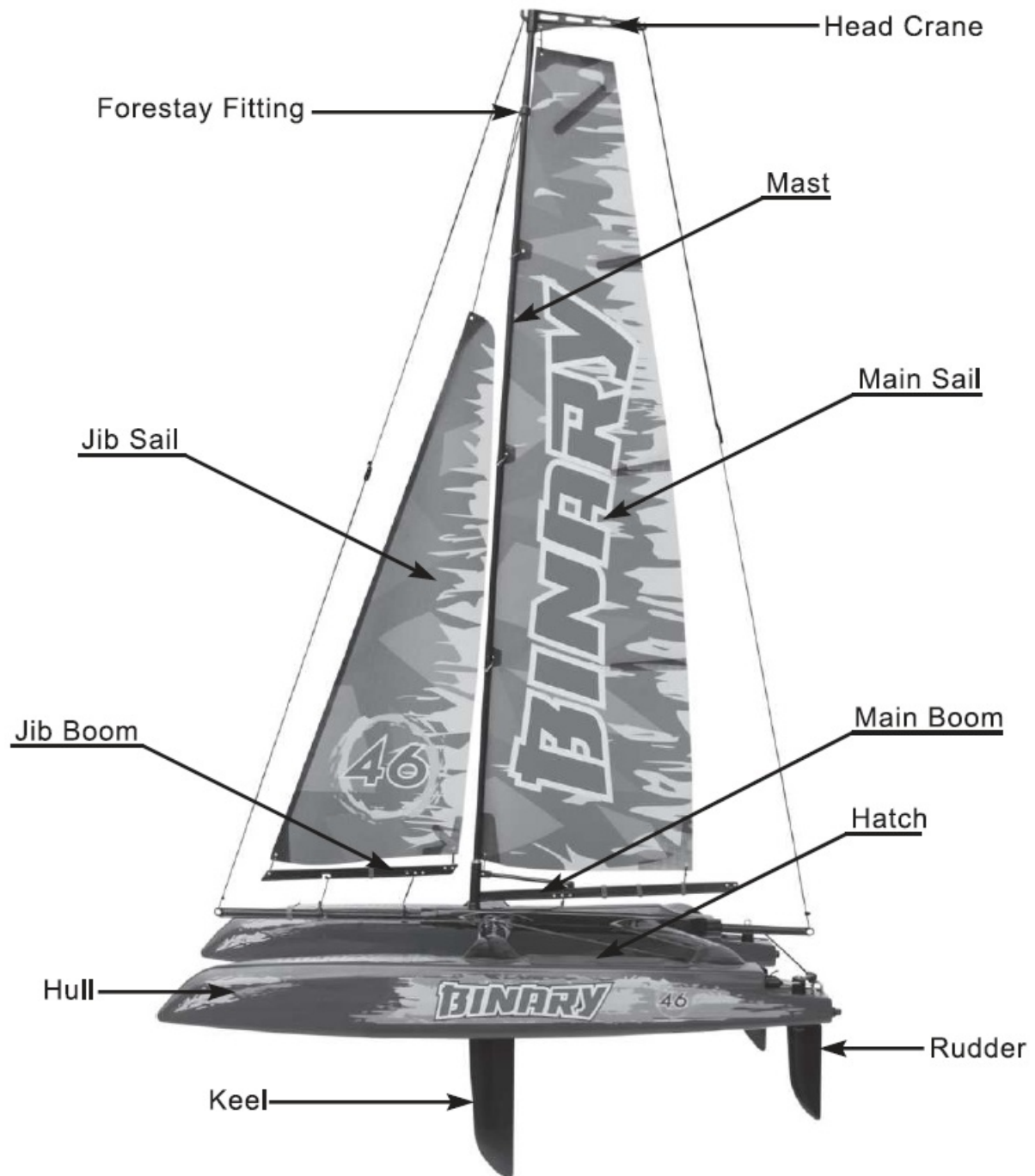
This device complies with Part 15 of the FCC Rules. Operation is subject to the following two conditions:

1. This device may not cause harmful interference.
2. This device must accept any interference received, including interference that may cause undesired operation.

CAUTION: Changes or modifications to this product not expressly approved by the party responsible for compliance may void the user's authority to operate the equipment.



BASIC BOAT TERMINOLOGY



- **BOW:** The front of the boat.
- **STERN:** The back of the boat.
- **PORT:** This is the left side of the boat when view the boat from the stern. An easy way to remember this is that port and left both contain four letters.
- **STARBOARD:** This is the right side of the boat when view the boat from the stern.
- **HULL:** The body of the boat.
- **DECK:** The top of the boat.
- **KEEL:** A weighted blade that protrudes from the bottom of the hull as a means of providing lateral stability.
- **RUDDER:** The hinged vertical plate mounted at the stern that controls steering.

INSTALL ALKALINE BATTERIES IN YOUR TRANSMITTER

INSTALL 4 PCS “AA” ALKALINE BATTERIES IN YOUR TRANSMITTER



- Install two control sticks before installing 4 pcs “AA” batteries.

Always use fresh AA alkaline battery in the transmitter

1. Ensure transmitter “POWER” switch is in the off position.
2. Slide off the battery door on the back of the transmitter.
3. Install 4 fresh “AA” alkaline batteries into the molded battery compartment of the transmitter. Noting correct location (polarity + or -)
4. Re-install the battery door onto the back of transmitter.



- **IMPORTANT NOTE:** It is very important to keep the throttle stick at its lowest position before switch on transmitter. So that when you install batteries for receiver, radio and boat are activated only on the condition that throttle stick is at its lowest position. (Green indicator light is solid on means transmitter is activated, if flash, push down the throttle stick till the lowest position)
5. Switch “POWER” on, green indicator light is on. Otherwise, check the above processes again to reinstall batteries.

DISPLAY STAND ASSEMBLY

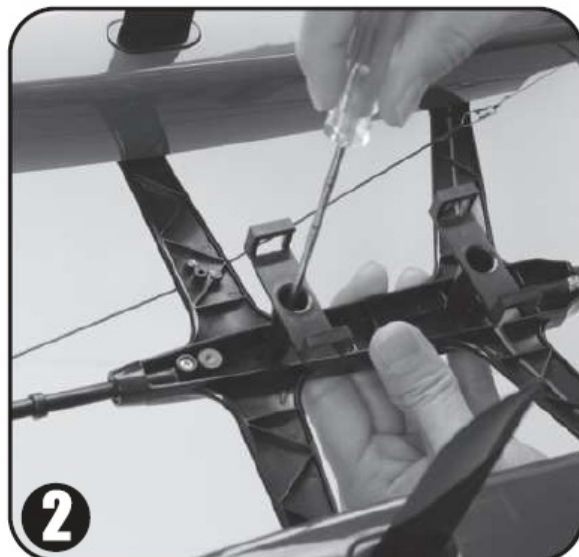
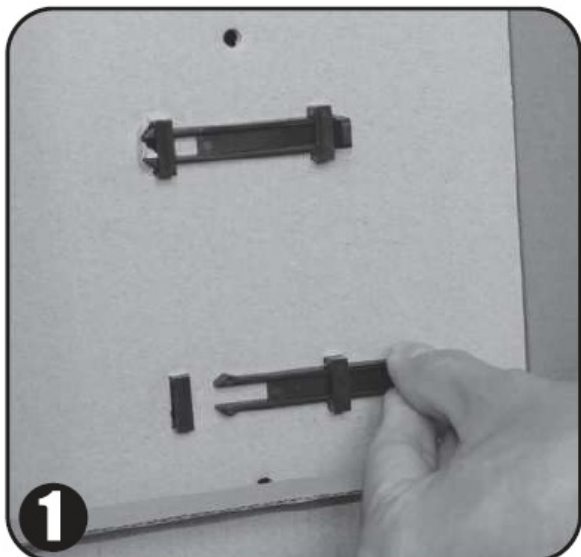


1. Assemble two pcs of side stand as photo shown.
2. Install two pcs of long tube between two side stand as photo shown.

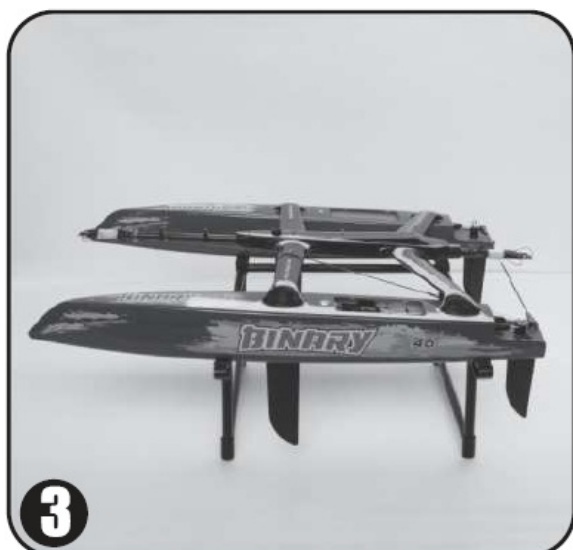


3. Install four pcs of EVA on the hull support as shown. This will protect the hull bottom from scratches during construction and storage.

TAKE BOAT & SAILS OUT FROM BOX

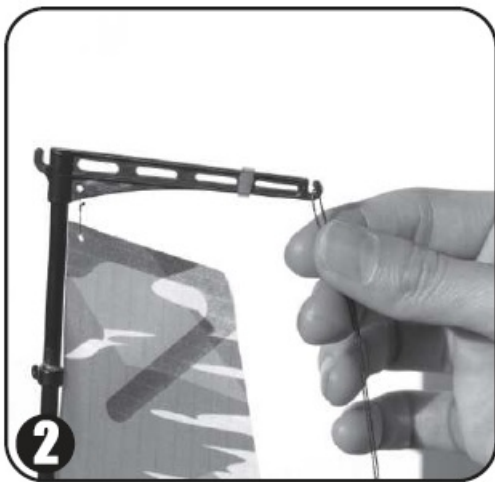
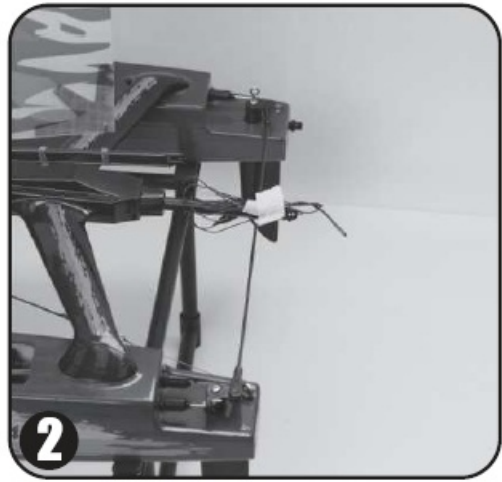


1. Take inner cardboard box out, disassemble two pcs pinch plate as photo shown.
2. Use cross-head screwdriver to remove two pcs of screws underneath the boat central spar as photo shown.

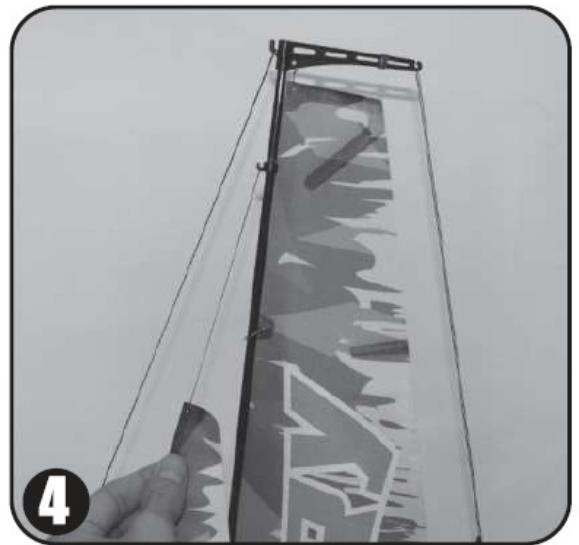
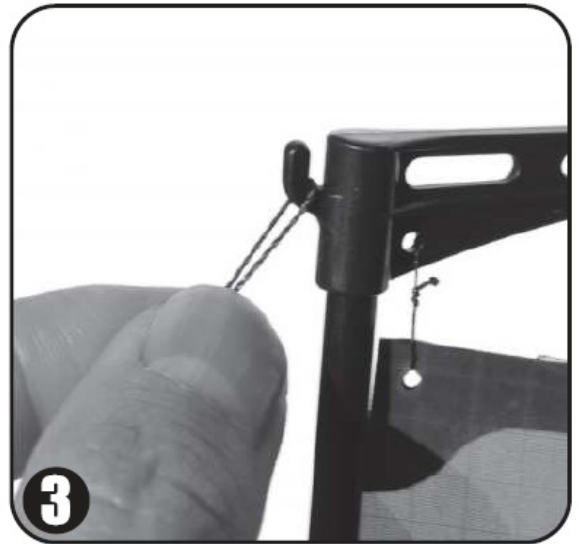


3. Place the boat on the display stand for next step assembly.
4. Take Sails & Mast & Booms set (pre-installed) out from box.

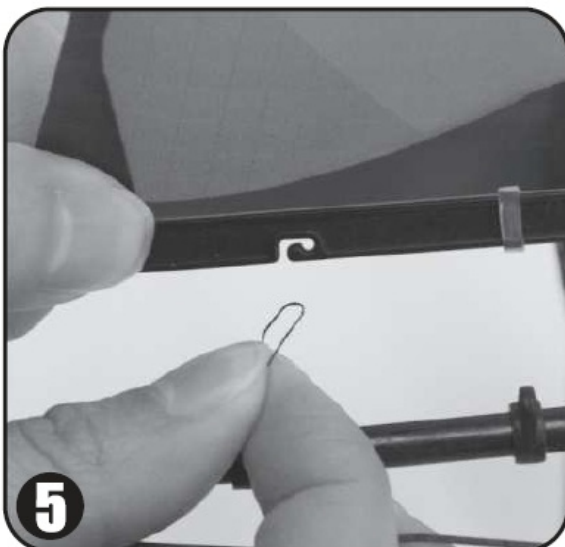
SAILS RIGGING



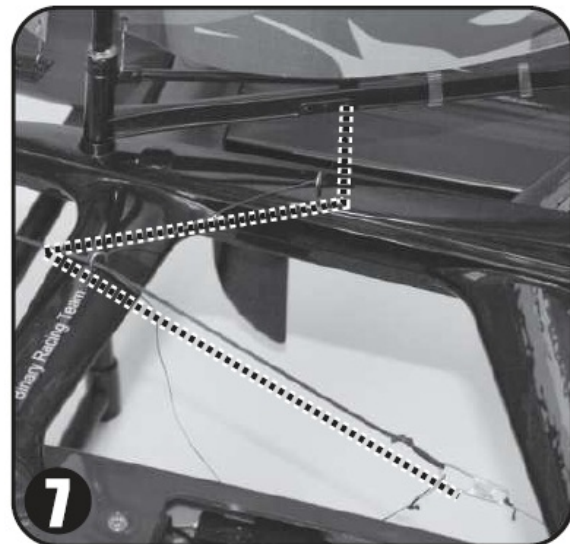
1. Insert Mast on the mast mount located on the central spar as photo shown.
2. Use cord on rear end of central spar to attach to hook of backstay crane as photo shown. Adjust cord bowsie to pull the backstay cord tight and straight.



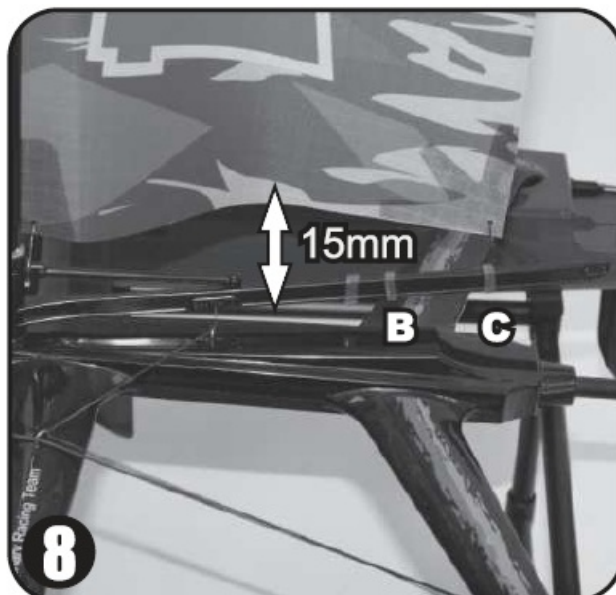
3. Use cord on front end of central spar to attach to hook of backstay crane as photo shown. Adjust cord bowsie to pull the forestay cord tight and straight.
4. Use forestay cord on jib sail tip to attach to hook of forestay fitting.



5. There is cord loop which attached to the silicone ring on central spar, use this cord loop to attach to hook underneath the jib boom. Adjust the silicone ring to pull cord tight.



6. Use jib boom cord to thread through the second boom bend eye (from front side back to rear side) located in central spar, thread through the sheeting deck eyelet on forward cross beam, attach cord loop to the pin as photo shown.
7. Use main boom cord to thread through sheeting deck eyelet on center of cross beam, then thread through sheeting deck eyelet on forward cross beam, attach cord loop to the pin as photo shown.



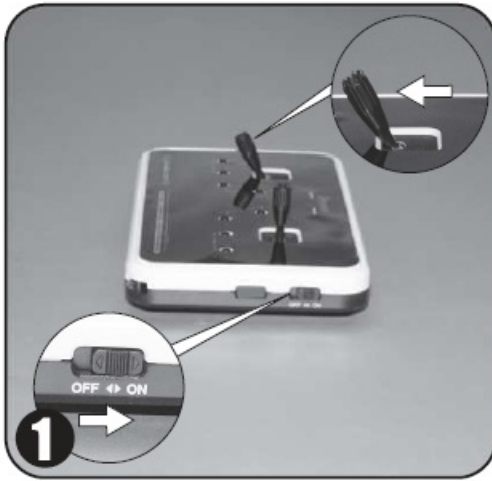
8. Adjust the B & C silicone ring on main boom to adjust the main sail radian as photo shown.

INSTALL ALKALINE BATTERIES IN RECEIVER

INSTALL 3 PCS “AAA” ALKALINE BATTERIES IN RECEIVER

IMPORTANT NOTE: Always switch on the transmitter before switch on the receiver and always switch off the receiver before switch off the transmitter.

Install 3 pcs AAA alkaline batteries into battery box of BINARY.



1. Push down the throttle stick (left stick) to the lowest position as shown, then switch on transmitter;
2. Install 3 pieces of “AAA” Alkaline batteries into the receiver box, make sure the correct polarity. then fix battery box well with velcro strap.



3. Switch on the receiver by pushing the pushrod forward to position “on”. This moment the receiver green light will be on.and steering servo and sailing servo in boat are under control correspondingly of radio control.

TRANSMITTER & RECEIVER BINDING

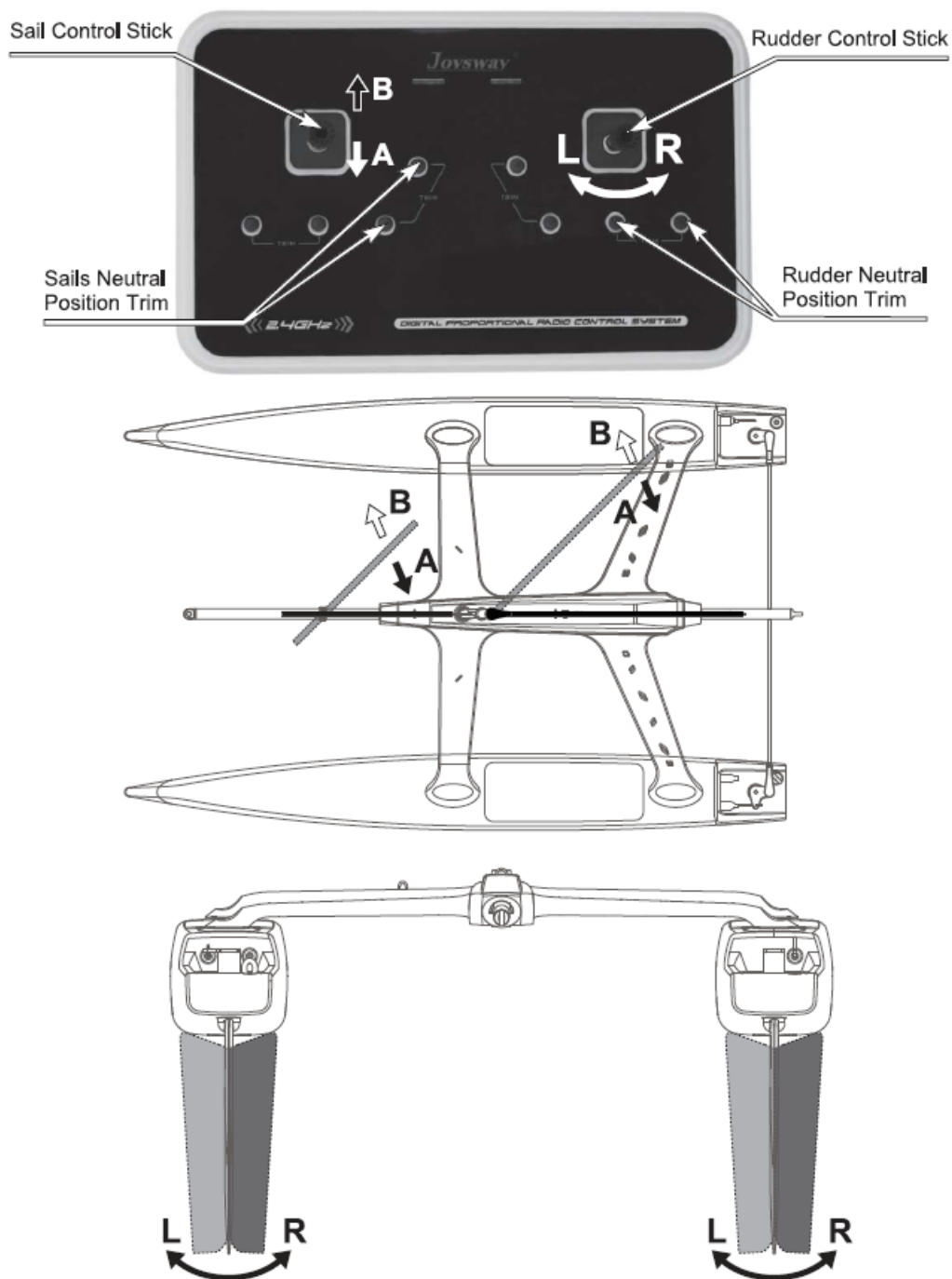
The binding process effectively ties the transmitter and receiver together. Under normal circumstances, both items are supplied like this from the factory. If, however, you find that your transmitter and receiver are not bound (receiver's red LED will turn on), you should do the following:

1. Make sure throttle stick (Left Stick) is pushed down till the end, switch on transmitter. Indicator light is solid on.
2. Install 3 pcs of “AAA” alkaline batteries into battery box in correct polarity, then fix the battery box well with a velcro strap.
3. Switch on the receiver by pushing the pushrod forward to position “on”.
4. Press down the “BIND” button on the receiver and release, the receiver's green light will flash and then turn to solid on, this indicate that binding process has been operated successfully and the receiver will now accept commands from the transmitter.

Note: During binding process, transmitter and receiver should be no more than one meter apart and no other similar devices should be within 10 meters. If the receiver's GREEN light is flashing, indicating a binding failure, Please repeat the binding process above.

PREPARATIONS FOR SAILING

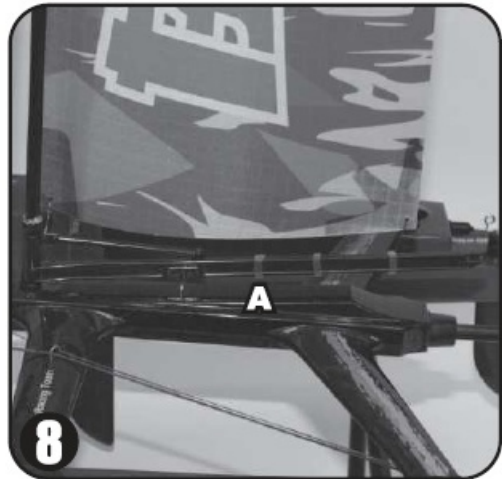
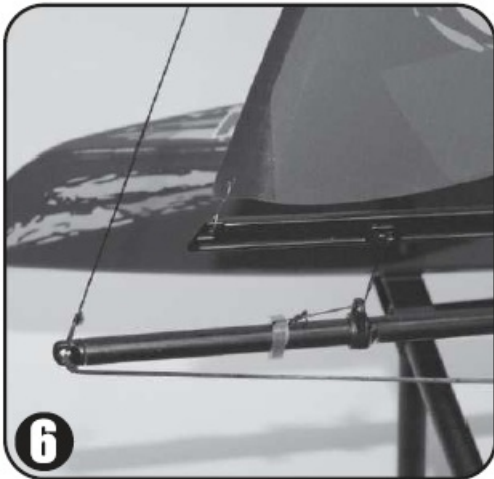
Before sailing your BINARY for the first time, Always switch on the transmitter before switch on the receiver and always switch off the receiver before switch off the transmitter. Following the procedures to check the radio and sailboat's function:



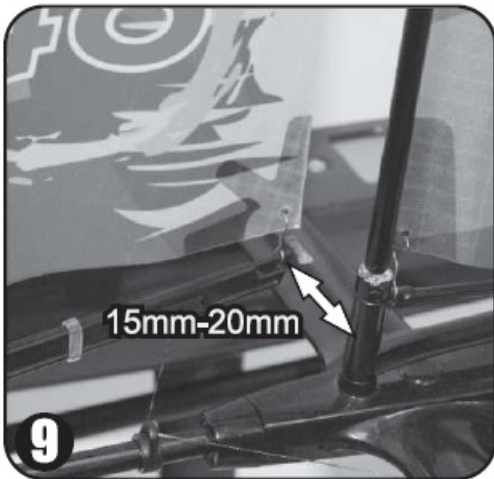
1. For sail control stick, when stick is in position A, accordingly, the main boom and jib boom are in the position of A as shown. When stick is in the position of B, accordingly, the main boom and jib boom are in the position of B as shown.
2. You may also adjust the sail servo neutral by pressing the sail neutral position trim button up or down.
3. For rudder control stick, rudder turn left when rudder control stick is pushed to the left. Rudder turn right when rudder control stick is pushed to the right.
4. You may also adjust the rudder servo neutral by pressing the rudder neutral position trim button left or right.
5. Check to make sure the left and right rudder will move together in same direction when push rudder control

stick on transmitter.

6. Adjust the silicone ring on central spar to pull jib boom tight.
7. Push down transmitter throttle stick (left stick) till its lowest position. This will make winch servo pull jib boom cord and main boom cord tight.



8. Adjust A silicone ring on main boom's position to make sure main boom is on the centerline of cross beam when winch servo pull main boom cord tight

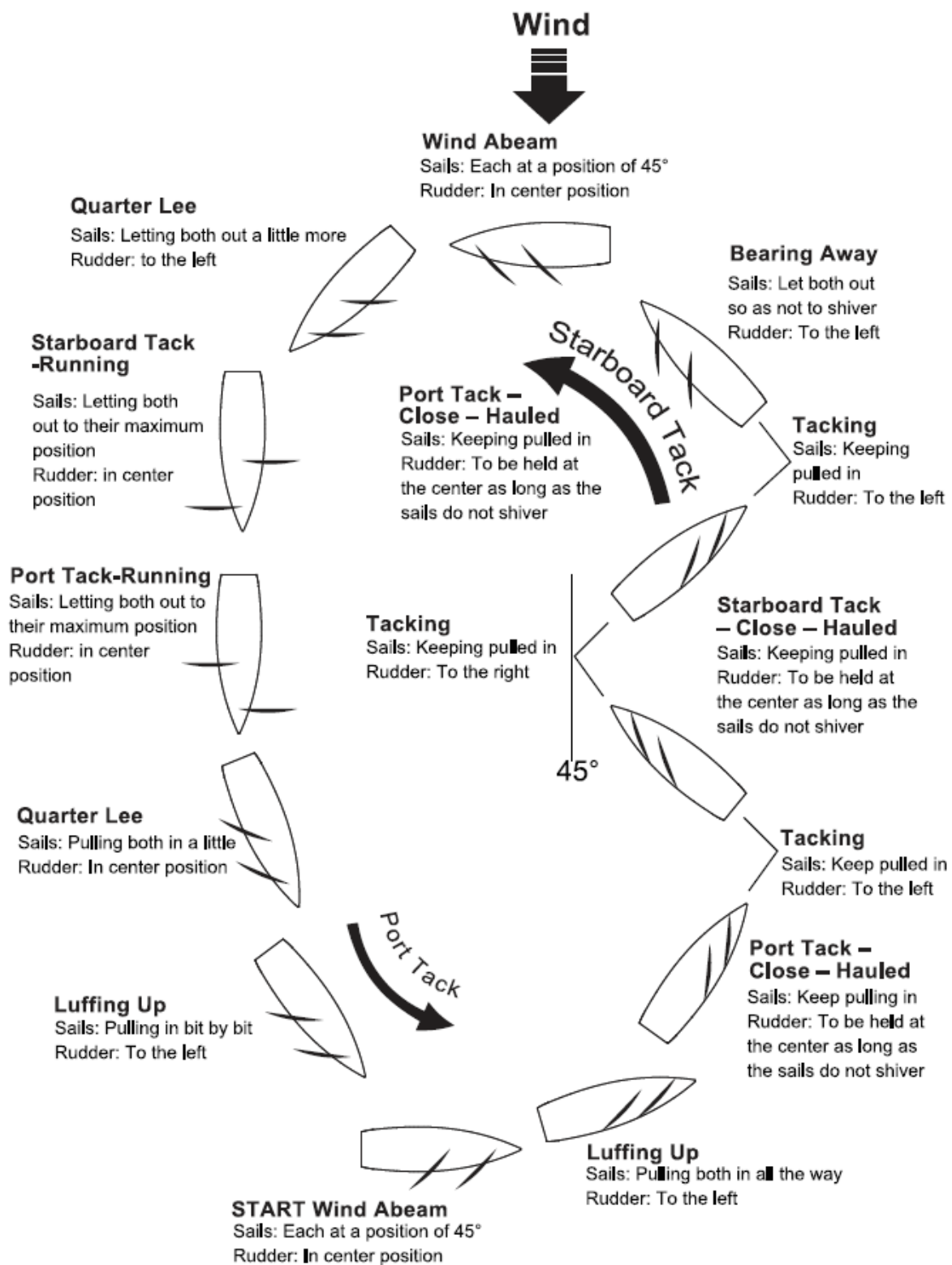


9. Adjust silicone ring on jib boom's position to make rear-end of Jib boom is moved away from mast at 15mm-20mm distance when winch servo pull jib boom cord tight.
10. Push up throttle stick till its top position, to check whether main sail and jib sail can be freely open or not.
11. Lastly stick the two pcs of PVC hatch on the hull deck. Press the PVC hatch tight on the deck.

SAILING THE BINARY

Unlike propeller driven boats that you basically point and accelerate, sailboats present an interesting challenge. Sailing requires constant reaction to water movements, any wind gusts, and any wind direction changes. These reactions then require adjustment of the rudder and sails in order to find the best possible course. There is no substitute for actual "on-the-water" experience and after your first couple of outings you may want to read through this manual again in order to help you to gain a better understanding of the "art" of sailing. While learning to sail, it is a good idea to pick up on as much sailing terminology as possible. This will make it easier to grasp some aspects.

How To Sail BINARY



IMPORTANT NOTICE

1. Sail your BINARY only in still bodies of water. Never sail your boat in running water such as streams or rivers, as it is easy to lose control of your boat.
2. Do not sail BINARY in heavy winds.
3. Never attempt to swim after a stalled or stuck boat! Wait patiently for the wind currents to return the boat to shore.
4. After running, remove the deck and allow the interior of the boat to dry out completely. If you neglect to do this, it may result in corrosion of the electronic components.

SPARE PART LIST

To order BINARY spare parts, use the part numbers in the spare parts list that follows.


PART NO./ DESCRIPTION

- **880701:** left & right hull with black color painting, no decals
- **880702:** left & right hull with blue color painting, no decals
- **880703:** Decal stickers
- **880704:** PVC deck covers (PK4)
- **880705:** Blue color main and jib sails set
- **880706:** Red color main and jib sails set
- **880707:** Stainless steel guiding parts for booms attachment (PK5)
- **880708:** mainsail luff rings and sails attachment hook (pk5)
- **880709:** Mast, booms and fittings set
- **880710:** ABS Beam set
- **880711:** Central spar and plastic fittings set
- **880712:** ABS keel (PK2)
- **880713:** ABS Rudder (PK2) and rudder linkage set
- **880714:** Servo and battery box tray
- **880715:** battery box for 3pcs AAA
- **880716:** Pushrod with rubber bellow
- **880717:** Power Switch rod w/ rubber bellow & switch connector set
- **880718:** Plastic boat stand set
- **880719:** 6cm length silicone tube(3*5)
- **880720:** 9g sail and rudder servo (PK2)
- **880320:** 5m dyneema cord 0.11mm
- **880318:** 2.4GHz Transmitter and receiver set
- **880511:** 1m Sheeting elastic
- **880516:** 2.4GHz receiver
- **880518:** 5m length dyneema cord(0.4mm)
- **880530:** bowsies (PK10)
- **880531:** 6cm length silicone tube(4*8)
- **880532:** deck eyes (pk10)
- **880536:** Rubber bung (PK4)
- **880622:** velco strap for battery box (PK2)
- **880623:** winch line rubber cap (PK5)

THIS IS NOT A TOY

- 14+
- THIS IS NOT A TOY

Documents / Resources

	<p>Joysway 8807 2.4Ghz RTR Binary Micro RC Catamaran Sailboat [pdf] Instruction Manual 8807, 8807 2.4Ghz RTR Binary Micro RC Catamaran Sailboat, 2.4Ghz RTR Binary Micro RC Catamaran Sailboat, Binary Micro RC Catamaran Sailboat, RC Catamaran Sailboat, Catamaran Sailboat, Sailboat</p>
---	---

References

- [M_H Search - Manual-Hub.com](#)