



[Home](#) » [Joyroom](#) » **JOYROOM JR-CB2S Bluetooth Transmitter and Receiver User Manual** 

Contents [[hide](#)]

- [1 JOYROOM JR-CB2S Bluetooth Transmitter and Receiver](#)
- [2 TX Guide](#)
- [3 FCC NOTE:](#)
- [4 FAQs](#)
- [5 Documents / Resources](#)
 - [5.1 References](#)

JOYROOM

JOYROOM JR-CB2S Bluetooth Transmitter and Receiver



Bluetooth Transmitter & Receiver

For FAQs and more information, please scan ▼



WARRANTY
CODE

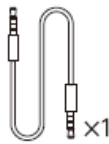
874695

✉ support@joyroom.com

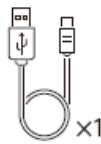
Packing list



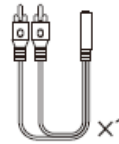
x1



x1



x1



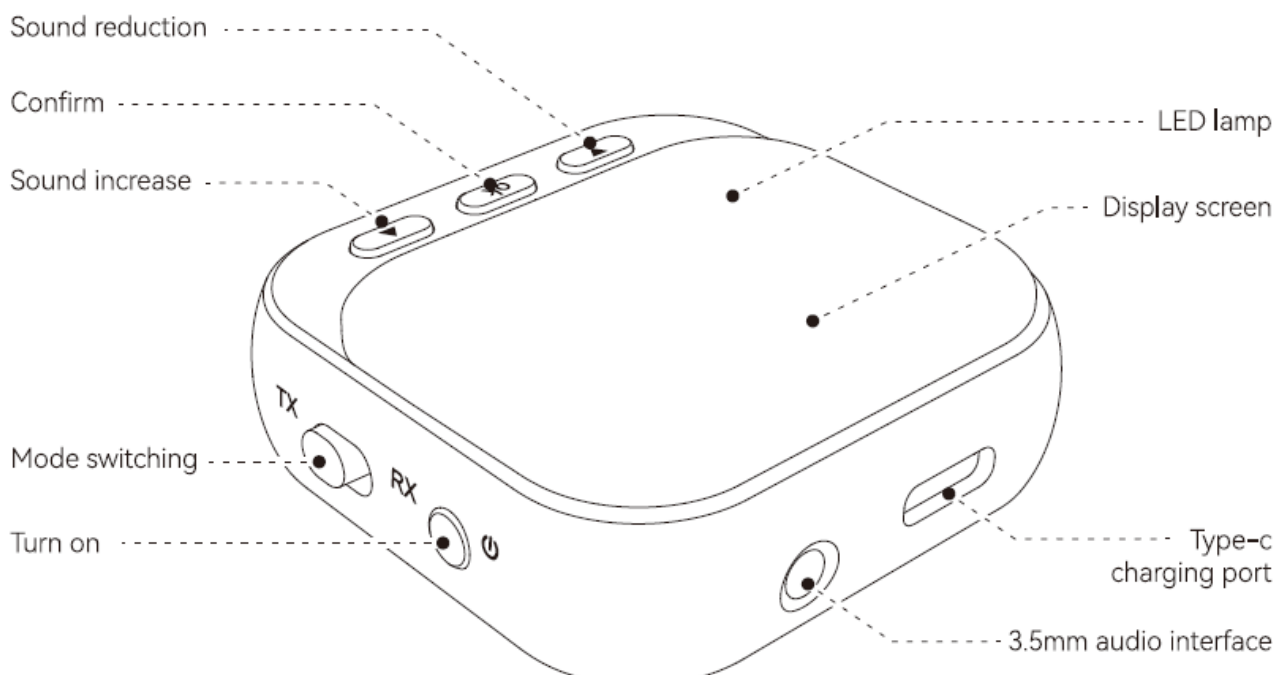
x1



x1

Bluetooth transmitter receiver 3.5mm AUX Cable Charging Cable RCA Cable Manual & Warranty Card

Product diagram



Basic parameters

- Model name: JR-CB2S
- Bluetooth version: V5.4
- Frequency range: 2.402-2.480GH2
- Rx working time: About 18 hours

- Tx working time: About 30 hours
- Charing time: About 2 hours
- Bluetooth protocol: A2DP, AVRCP
- Pair 2 devices(tx): support
- Pair 2 devices(x): support
- CODEC: SBC
- Battery: 400mAh Rechargeable lithium battery
- Charging voltage: 5V DC $\geq 500\text{mA}$
- Working temperature: $-10\text{--}55^{\circ}\text{C}$
- Weight: 27g
- Size: 47.5 mm*47.5 mm*16.3 mm

Basic function

| | | |
|--------------------|------------------------|---|
| Power Button | Power on | Long press "Power Button" 2-3s to power on |
| | Power off | Long press "Power Button" 2-3s to power off |
| | Paring | Double press "Power button" to enter paring mode |
| | Power off forcibly | In abnormal state, long press "Power button" 8-9s to power off forcibly |
| OK Button | Select device | When it is in pairing(TX) mode, press "ok button" to choose the device |
| | Continue pause | When it is in RX mode, press "ok button" to continue/pause the music |
| | Clear up paring record | When it is power on, longpress "ok button" 3s to clean up the paring record |
| Switch Mode button | Switch mode | Turn the button to TX to enter TX mode Turn the button to RX to enter RX mode |
| Volume up button | Select item | When it is in TX Mode, press it to goup |
| | Volume Up | RX Mode, press "volume up button" to volume up |
| | Next song | RX Mode, press "volume up button" 1s to next song |
| Volume down button | Select item | When it is in TX Mode, press it to go down |
| | Volume down | RX Mode, press "volumedown button" to volume down |
| | Last song | RX Mode, press "volume down button" 1s to last song |

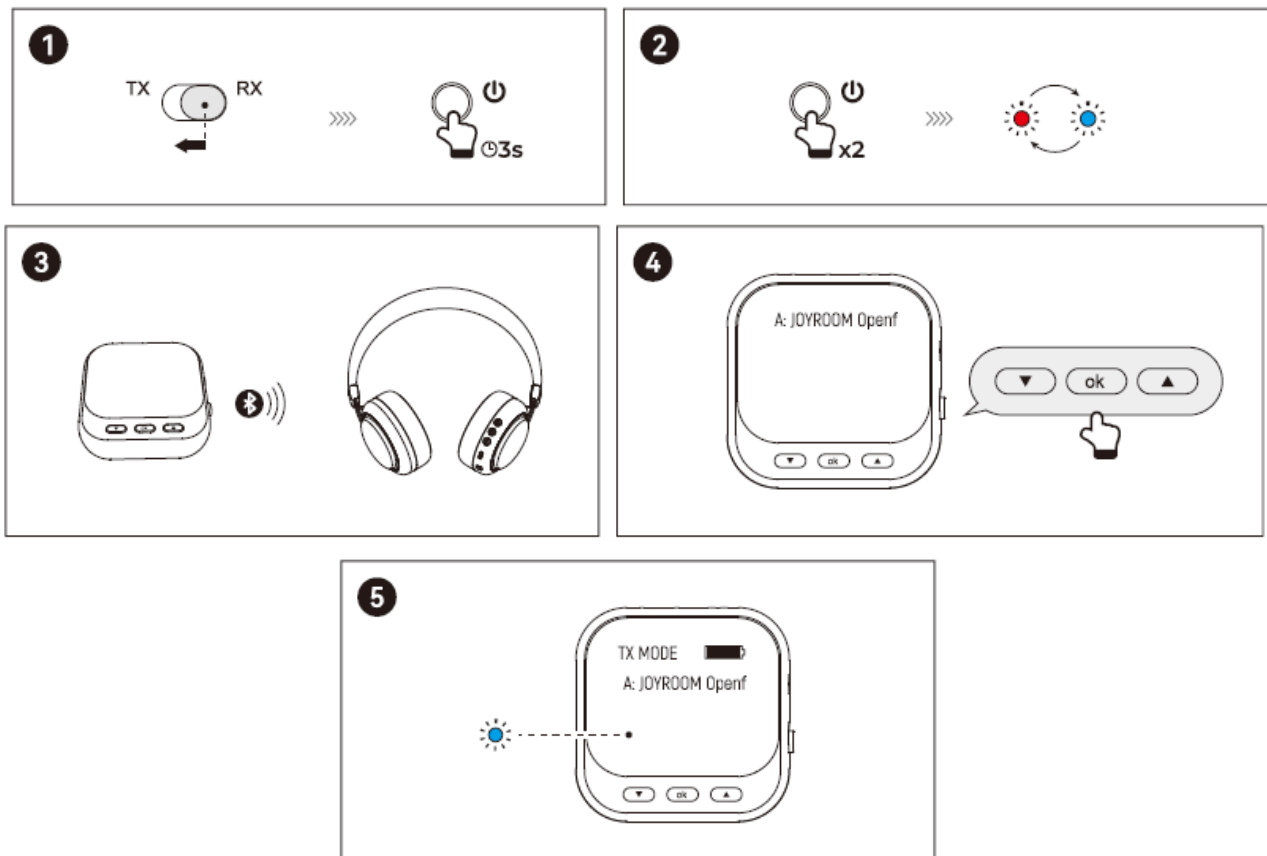
TX Guide

TX mode pairing and connection

1. When it powers off, press the "switch mode button" to TX, press the "power button" 2-3s
2. If it doesn't pair, double press "power button" to enter pairing mode, red and blue lights

flashing alternately

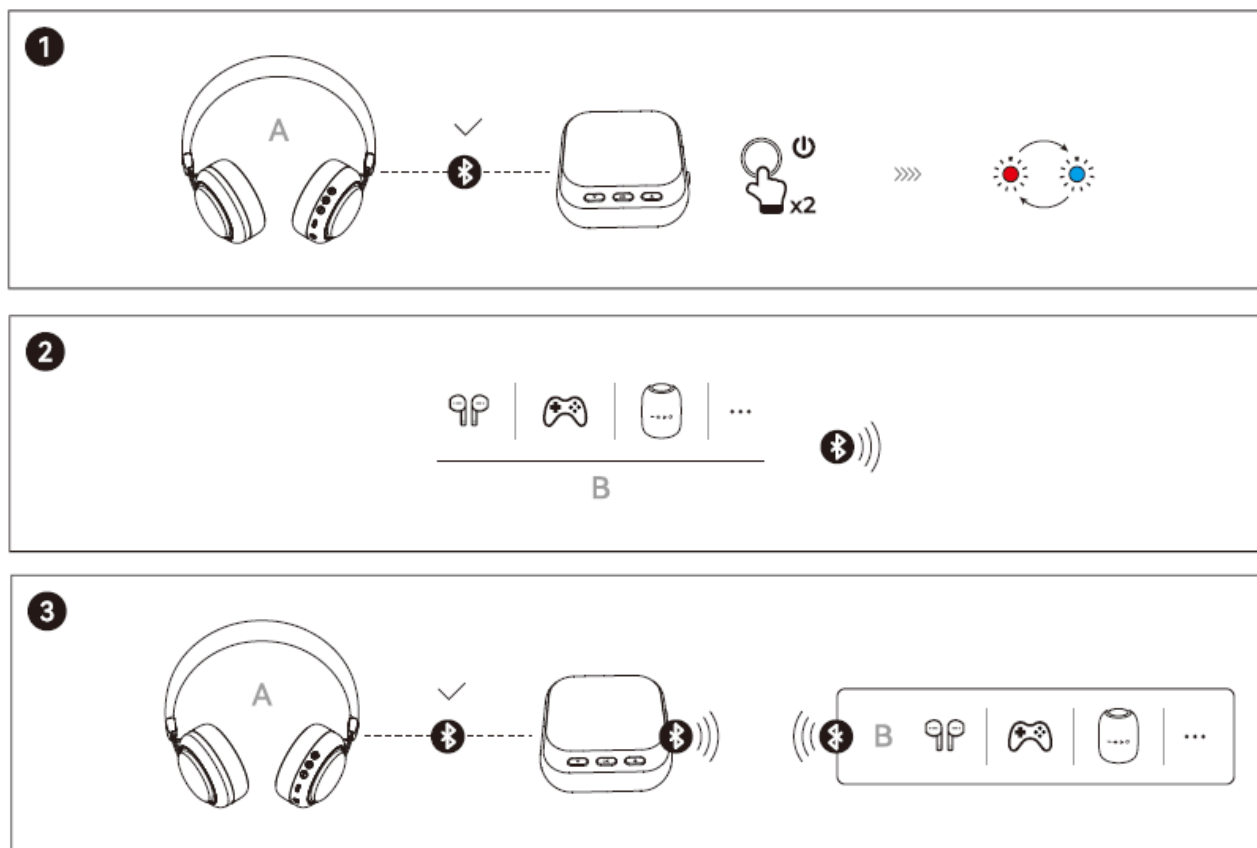
3. Make your device power on and enter pairing mode. Usually. The flashing mode is alternating red and blue lights or rapid blue lights.
4. After JR-CB2S search the device list, choose device by “volume up button” and “volume down button”. then press “ok button” to connect.
5. After connection, the JR-CB2S blue light turns on, and the screen shows the name of the device connected.



TX pair 2 devicesa

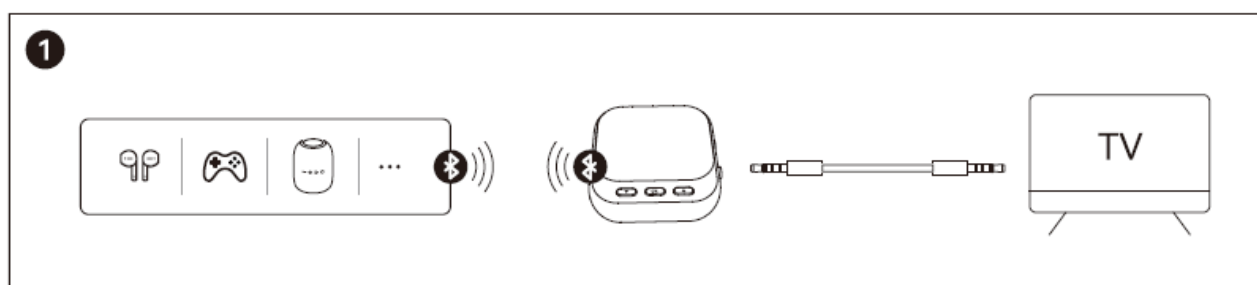
1. After connecting the first device A, double-click the Power button of JR-CBS to enter the pairing mode, and the red and blue lights flash alternately (the first connected device is not affected and can be used normally).
2. Turn on the second device B (Bluetooth headset, speaker, receiver, etc.) and enter pairing mode.
3. After JR-CBS searches for the pairing name of device B, select the pairing name of device B by pressing the “volume up button” and “volume down button”, and click the “ok button” to start the connection. When the connection is successful, the blue light of JR-CB2S will be steady on, and the Bluetooth names of devices A and B will be

displayed on the screen.



TX mode connect TV

- Connect the JR-CBS to your TV via a 3.5mm audio cable. You can hear the sound of the TV program by connecting the JR-CBS device via Bluetooth.



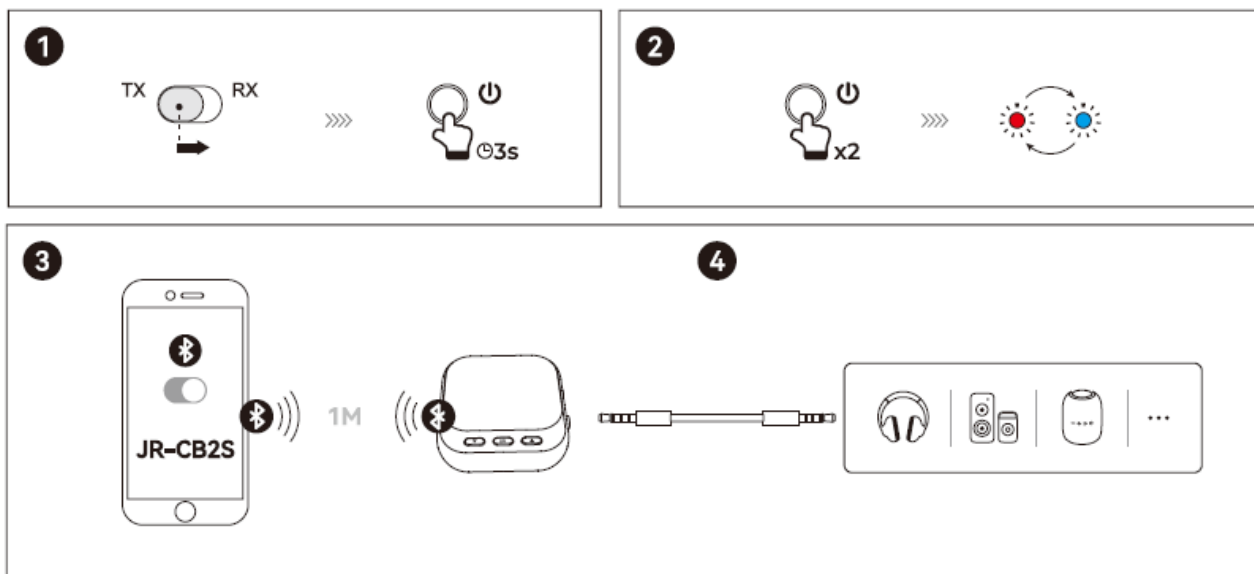
RX Guide

RX mode pairing and connection

1. Turn the “Mode Switch button” to RX and press the power button for 2-3 seconds to start the machine.
2. If it doesn't pair, double press “power button to enter pairing mode, red and blue light

flash alternately

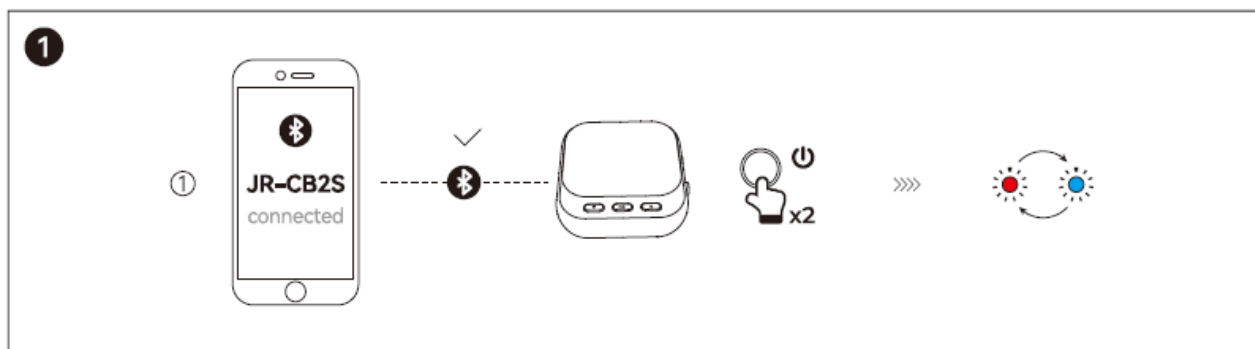
3. Make your device power on and enter pairing mode, Usually, the flashing mode is alternating red and blue lights or rapid blue lights.
4. After JR-CBS search the device list, choose device by “volume up button” and “volume down button”, then press “ok button” to connect.

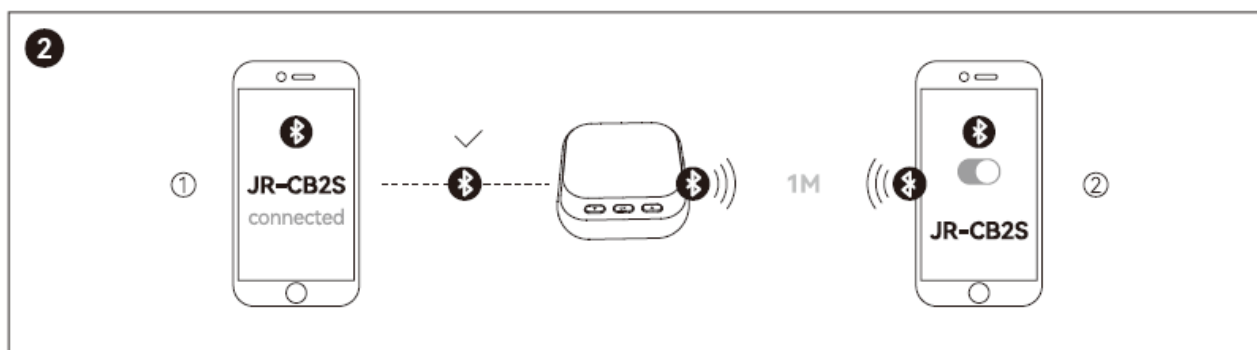


RX mod pairing 2 devices

1. After connecting the first mobile phone (computer, tablet), double-click the “Power button” of JR-CB2S to enter the pairing mode, and the red and blue lights flash alternately (the first mobile phone successfully connected will not be affected and can be used normally).
2. Turn on the Bluetooth function of the second mobile phone, click search, and click “JR-CB2S” to connect.

After er successful connection, the JR-CB2S blue light will be on.





Basic function

| State | Indicator |
|--------------------------------|---|
| Power on (RX/TX) | Blue light flash 3 times |
| Power off (RX/TX) | Red light flash 3times |
| Pairing (RX/TX) | Red and blue lights flash alternately |
| Stand by (RX/TX) | Blue light flashes twice every 5 seconds |
| connected (RX/TX) | Blue light on |
| Pair 2 devices (RX/TX) | Blue light on |
| Link back (RX/TX) | The blue light flashes once every 1 second |
| Clean up paring record (RX/TX) | The red and blue lights flash four times simultaneously |
| Low battery | Red and blue lights flashing red breath flashing 4 times simultaneously |
| Charging | Red light on |
| Full charge | Red light off |

Safety Criteria

1. Please follow the instructions, do not disassemble the product or refit it for any reason, otherwise it may break down or burn down.
2. Do not immerse it in any liquid or wash it with water.
3. Please use adapters that conform to national/regional safety standards together with the included charging cable to charge the product; otherwise, its battery may be damaged or cause safety problems.
4. Please use and store it in normal temperatures; too low or too high temperatures

below 0°C or above 45°C are not permitted.

5. Do not block the openings of the product, such as the charging port, indicator, etc.
6. Do not use it at high volume levels or for long periods to avoid dizziness or hearing damage.
7. Do not use it under a thunderstorm, which may lead to abnormal performance and signal interruption.

It is hereby declared that this product model of JOYROO complies with the provisions of Directive 2014/53/EU and Directive 2011/65/EU. The full text of the EC Declaration of Conformity can be found on the following website: <https://www.joyroom.com>

This equipment complies with the provisions of Directive 2012/19/EU and 2006/66/EU. It is strictly forbidden to dispose of this equipment with ordinary trash.

It must be recycled. This symbol indicates that the product shall not be treated as regular domestic trash and must be delivered to a recycling center that is capable of recycling electronic and electrical equipment.



WARNING

1. Before installing or operating the product, please refer to the electrical and safety information on the bottom of the shell.
2. Disposing of the battery by throwing it into a fire or a hot oven, or by mechanically crushing or cutting it, may result in an explosion.
3. When the battery is exposed to extremely low air pressure, it may cause an explosion or lead to flammable liquid or gas leakage.
4. Please follow the above safety instructions; otherwise, it will cause fire, electric shock, damage, or other injuries.

FCC NOTE:

This device complies with Part 15 of the FCC Rules.

Operation is subject to the following two conditions:

1. This device may not cause harmful interference. This
2. device must accept any interference received, including interference that may cause undesired operation.

Any Changes or modifications not expressly approved by the party responsible for compliance could void the user's authority to operate the equipment. This equipment has been tested and found to comply with the limits for a Class B digital device under part 15 of the FCC Rules. These limits are designed to provide reasonable protection against harmful interference in a residential installation. This equipment generates, uses, and can radiate radio frequency energy and, if not installed and used by the instructions, may cause harmful interference to radio communications.

However, there is no guarantee that interference will not occur in a particular installation. Suppose this equipment does cause harmful interference to radio or television reception, which can be determined by turning the equipment off and on. In that case, the user is encouraged to try to correct the interference by one or more of the following measures:

- Reorient or relocate the receiving antenna.
- Increase the separation between the equipment and receiver.
- Connect the equipment to an outlet on a circuit different from that to which the receiver is connected,
- Consult the dealer or an experienced radio/TV technician for help.
- The device has been evaluated to meet the general RF exposure requirements.
- The device can be used in portable exposure conditions without restriction.

FAQs

A. Auto- power off

In the RX/TX state, if no device is connected for more than 10 minutes or the battery voltage is below 3.1V, the device will automatically shut down.

B How to connect back?

I can't connect it back? After the JR-CB2S is successfully connected to the Bluetooth device, it will be automatically connected back to your device every time you start up. If the connection fails, please retry the connection


C How to clear pairing records?

In the state of TX or RX in, long press the 'Confirm

E. What is the charging voltage and current?

What equipment can charge it? As long as the DC voltage is 5V and the current is morethan 500mA, the car charger, the bus charger, and the computer USB can charge the JR-CB2S

Documents / Resources

| | |
|---|--|
|  | JOYROOM JR-CB2S Bluetooth Transmitter and Receiver [pdf] User Manual 2BA8X-JR-CB2S, 2BA8XJRCB2S, JR-CB2S Bluetooth Transmitter and Receiver, JR-CB2S, Bluetooth Transmitter and Receiver, Transmitter and Receiver, Transmitter, Receiver |
|---|--|

References

- [User Manual](#)

Joyroom

2BA8X-JR-CB2S, 2BA8XJRCB2S, Bluetooth Transmitter and Receiver, Joyroom, JR-CB2S, JR-CB2S Bluetooth Transmitter and Receiver, Receiver, Transmitter, Transmitter and Receiver

Leave a comment

Your email address will not be published. Required fields are marked *

Comment *

Name

Email

Website

☐ Save my name, email, and website in this browser for the next time I comment.

Post Comment

Search:

Search

[Manuals+](#) | [Upload](#) | [Deep Search](#) | [Privacy Policy](#) | [@manuals.plus](#) | [YouTube](#)

This website is an independent publication and is neither affiliated with nor endorsed by any of the trademark owners. The "Bluetooth®" word mark and logos are registered trademarks owned by Bluetooth SIG, Inc. The "Wi-Fi®" word mark and logos are registered trademarks owned by the Wi-Fi Alliance. Any use of these marks on this website does not imply any affiliation with or endorsement.