



# Joydeal BLS-YL1 Wireless Control Switch with 30A Relay Instructions

[Home](#) » [Joydeal](#) » Joydeal BLS-YL1 Wireless Control Switch with 30A Relay Instructions 

*Joydeal BLS-YL1 Wireless Control Switch  
with 30A Relay Instructions*

## Wireless Co ntrol Switch

### Contents

- [1 1. About Wireless Control Switch](#)
- [2 2. Wiring diagram](#)
- [3 3. Technical indicators](#)
- [4 4. How to pair a new controller](#)
- [5 5. How to clear the Memory](#)
- [6 Documents / Resources](#)
- [7 Related Posts](#)

### 1. About Wireless Control Switch

The product is a wireless remote switch with 30A relay. This switch has a wide range of use, essay to install and easy to use. It lets you turn on or shut off power of household appliances (90V -264 V) such as monitor, printer, speakers and more. It even can be used for industrial equipment or Security equipment(Just wiring and use)



## 2. Wiring diagram



## 3. Technical indicators

Input voltage: 90V-264V

Output current: 30A

RF Working frequency, 433MHz

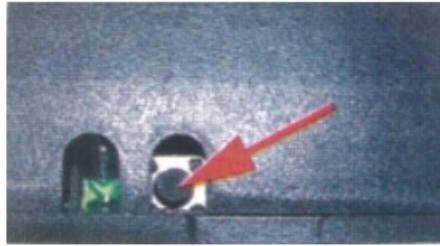
Range: up to 100 m in open field

Receiver Sensitivity: -95dbm

Max number of controllers: 16

## 4. How to pair a new controller

a) Press the button three times, the LED stays solid green



b) Press the ON button once, the LED will blink green three times then stays solid green



c) Press the OFF button to finish the pairing. Now you have successfully added a new controller.

## 5. How to clear the Memory

Press the button eight times to clear memory then add a new controller again (if you have problem when you add a new controller).

### **Warning Statement**

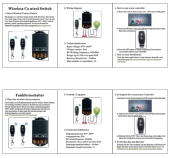
This device complies with part 15 of the FCC Rules. Operation is subject to the following two conditions: (1) This device may not cause harmful interference, and (2) this device must accept any interference received, including interference that may cause undesired operation.

Any Changes or modifications not expressly approved by the party responsible for compliance could void the user's authority to operate the equipment.

**Note:** This equipment has been tested and found to comply with the limits for a Class B digital device, pursuant to part 15 of the FCC Rules. These limits are designed to provide reasonable protection against harmful interference in a residential installation. This equipment generates uses and can radiate radio frequency energy and, if not installed and used in accordance with the instructions, may cause harmful interference to radio communications. However, there is no guarantee that interference will not occur in a particular installation. If this equipment does cause harmful interference to radio or television reception, which can be determined by turning the equipment off and on, the user is encouraged to try to correct the interference by one or more of the following measures:

- Reorient or relocate the receiving antenna.
- Increase the separation between the equipment and receiver.
- Connect the equipment into an outlet on a circuit different from that to which the receiver is connected. -Consult the dealer or an experienced radio/TV technician for help.

## Documents / Resources



**[Joydeal BLS-YL1 Wireless Control Switch with 30A Relay](#)** [pdf] Instructions  
BLS-YL1, BLSYL1, 2A48T-BLS-YL1, 2A48TBLSYL1, BLS-YL1 Wireless Control Switch with 30  
A Relay, Wireless Control Switch with 30A Relay