

JOYBOS JBS-GYLJT-6711B-WT AUTOMATIC TRASH CAN



JOYBOS JBS-GYLJT-6711B-WT Automatic Trash Can Instruction Guide

[Home](#) » [Joybos](#) » JOYBOS JBS-GYLJT-6711B-WT Automatic Trash Can Instruction Guide 

Contents

- [1 JOYBOS JBS-GYLJT-6711B-WT Automatic Trash Can](#)
- [2 PRODUCT OVERVIEW](#)
- [3 Troubleshooting](#)
- [4 PRODUCT INSTRUCTIONS](#)
- [5 FEATURES](#)
- [6 CARE & MAINTENANCE](#)
- [7 FREQUENTLY ASKED QUESTIONS](#)
- [8 VIDEO – PRODUCT OVERVIEW](#)
- [9 References](#)
- [10 Related Posts](#)

Joybos

JOYBOS JBS-GYLJT-6711B-WT Automatic Trash Can



Notice

1. When installing the battery, please pay attention to the positive and negative poles of the
2. Do not press the lid or flip the lid with external force during the opening process to avoid damaging the accessories.
3. Avoid using the trash can in direct sunlight or in an excessively humid environment.
4. Keep the sensing area clean to ensure the normal sensing function of the lid
5. Please do not disassemble repair or replace parts with other accessories without permission

PRODUCT OVERVIEW



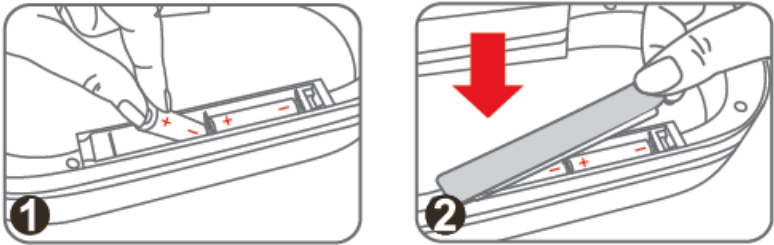
Troubleshooting

	Method of exclusion
Can't open normally	Check whether the battery is installed in the correct direction or whether the battery has electricity, and turn the power switch back on
	Check the sensing area for foreign matter, if so, clean it with a clean rag

Can't close normally	Check the sensing area for foreign matter, if so, clean it with a clean rag
	Check whether the circuit is damp, if so, please do not use it, put it in a ventilated place for drying, then use it again
	Check to see if there is any object blocking the lid, if so, remove it
Lid opens slower than usual	The electricity for a battery is empty, please replace the battery
PS: If the above exclusion methods do not work, please contact the seller, please do not disassemble the original electron parts contained in the trash can	

PRODUCT INSTRUCTIONS

1. Install 2pcs AA Batteries



2. Fixed Trash Bag Ring



3. Place Odor Filter

Each carbon filter lasts for about 2 months.



4. Turn On The Product

Press the left button gently and hold it for 3 seconds to turn on the product. Press again to turn it off.



5. Smart Sensor

The lid stays open if you keep your hands above the infrared motion sensor. The lid closes after 5 seconds automatically if no movement is detected by the sensor.



6. Manual Control Feature

Press the right button to open/close the lid manually, the lid will stay open until you press the button again. (The smart sensor will be disabled after the lid is opened manually)



FEATURES

- The trash can has a hands-free sensor lid that lets you empty it without touching it. This is a clean way to get rid of trash.
- The large volume means that it can hold a lot of trash, so it doesn't need to be emptied as often.
- **Modern Design:** It looks great in any kitchen or office because it is sleek and stylish.
- **Quiet Lid Closure:** The lid closes quietly, so there is less noise and disturbance.
- **Controlling Odors:** It has a method for controlling smells that keeps bad smells inside.
- **Durable Construction:** It's made from high-quality materials that will last a long time.
- **Energy-efficient:** uses little power and doesn't need many battery refills.
- **Battery-operated:** standard batteries are used so that it is easy to use and repair.
- **Fingerprint Resistant:** The outside is made to not show smudges or fingerprints, so it always looks clean.
- **Removable Inner Bucket:** It has an inner bucket that makes it easy to empty the trash and change the bags.
- **Anti-Slip Base:** The base is made so that it won't slip, making it stable on a variety of surfaces.
- **Indicator Light:** It has an LED light that lets you know when the door is about to open or close.
- **Child Safety Lock:** It has a safety lock that keeps kids from opening it by mistake.
- **Design that saves space:** Its small size makes it easy to store in small areas.
- **Multi-Use:** It can be used in bathrooms, homes, workplaces, and other places.

CARE & MAINTENANCE

- **Regular Cleaning:** To keep the outside clean and free of smudges, wipe it down with a wet cloth and light soap.
- **strong Chemicals:** Cleaners that are too rough or strong chemicals should not be used on the finish because they can damage it.
- **Empty Often:** Empty the trash can often to keep it clean and stop it from overflowing.
- **Replace Batteries:** Make sure the monitor works well by checking the batteries and replacing them as needed.
- **Clean Sensor:** Use a dry cloth to gently clean the sensor area to make sure it works right.
- **Getting rid of smells:** To keep smells away, use deodorizing items or trash bags that are made to block smells.
- **Lid Mechanism:** Check the lid mechanism every so often to see if there are any problems or things that are blocking it.
- Keep an eye on the trash can to see if there are any signs of damage or wear and tear.
- **Use the Right Bags:** To keep trash bags from getting too full and torn, make sure they are the right size.
- **Secure Lid:** To keep the container clean and free of smells, make sure the lid is tightly shut after each use.
- **Do Not Overload:** Do not put too much in the trash can; this can put stress on the lid system.
- **How to Store:** Keep the trash can in a dry place when not in use to keep it from getting damaged by water.
- **Handle with Care:** To keep the trash can from getting dented or broken, don't drop or hit it.
- **Warranty Service:** If you need service or fixes, keep the ticket and information about the warranty.

FREQUENTLY ASKED QUESTIONS

What is the brand and model of the automatic trash can described?

The automatic trash can described is the JOYBOS JBS-GYLJT-6711B-WT Automatic Trash Can.

What is the capacity of the JOYBOS JBS-GYLJT-6711B-WT Automatic Trash Can?

The capacity of the JOYBOS JBS-GYLJT-6711B-WT Automatic Trash Can is 14 Liters.

What is the opening mechanism of the JOYBOS JBS-GYLJT-6711B-WT Automatic Trash Can?

The opening mechanism of the JOYBOS JBS-GYLJT-6711B-WT Automatic Trash Can is Motion-Sensor.

What are the recommended uses for the JOYBOS JBS-GYLJT-6711B-WT Automatic Trash Can?

The recommended uses for the JOYBOS JBS-GYLJT-6711B-WT Automatic Trash Can include Bedroom, Office, Living room, Home/Kids Nursery, and Bathroom.

What room types is the JOYBOS JBS-GYLJT-6711B-WT Automatic Trash Can suitable for?

The JOYBOS JBS-GYLJT-6711B-WT Automatic Trash Can is suitable for use in the bathroom and bedroom.

What special features does the JOYBOS JBS-GYLJT-6711B-WT Automatic Trash Can have?

The JOYBOS JBS-GYLJT-6711B-WT Automatic Trash Can features Quiet Close, Odor Seal, and is sealed and deodorized.

What are the dimensions of the JOYBOS JBS-GYLJT-6711B-WT Automatic Trash Can?

The dimensions of the JOYBOS JBS-GYLJT-6711B-WT Automatic Trash Can are 13 L x 6.7 W x 13 H inches.

What is the weight of the JOYBOS JBS-GYLJT-6711B-WT Automatic Trash Can?

The weight of the JOYBOS JBS-GYLJT-6711B-WT Automatic Trash Can is 2.4 pounds.

Who is the manufacturer of the JOYBOS JBS-GYLJT-6711B-WT Automatic Trash Can?

The manufacturer of the JOYBOS JBS-GYLJT-6711B-WT Automatic Trash Can is JOYBOS.

What is the price of the JOYBOS JBS-GYLJT-6711B-WT Automatic Trash Can?

The price of the JOYBOS JBS-GYLJT-6711B-WT Automatic Trash Can is \$35.99.

My JOYBOS JBS-GYLJT-6711B-WT Automatic Trash Can is not opening when I approach it. What should I do?

Ensure that the motion sensor area is not obstructed by any objects. Clean the sensor area with a soft cloth to remove any dust or debris that might be interfering with its functionality.

The lid of my JOYBOS JBS-GYLJT-6711B-WT Automatic Trash Can closes abruptly or makes loud noises when closing. How can I fix this?

Check if there is any debris or obstructions preventing the lid from closing smoothly. Clean the lid hinges and the surrounding area to ensure smooth operation.

My JOYBOS JBS-GYLJT-6711B-WT Automatic Trash Can is emitting unpleasant odors despite having an odor seal feature. What steps can I take to address this?

Ensure that the trash bag is securely in place and not allowing odors to escape. Consider using scented trash bags or adding deodorizers to the trash can to help neutralize odors. Additionally, regularly empty the trash can and clean the interior with a mild detergent to prevent odor buildup.

The motion sensor of my JOYBOS JBS-GYLJT-6711B-WT Automatic Trash Can seems to be overly sensitive, causing the lid to open unexpectedly. How can I adjust the sensitivity of the sensor?

Check if there are any reflective surfaces or sources of infrared light in the vicinity that may be triggering the sensor unintentionally. Adjust the position of the trash can to minimize interference. If the sensor sensitivity is adjustable, refer to the user manual for instructions on how to adjust it.

My JOYBOS JBS-GYLJT-6711B-WT Automatic Trash Can is not sealing properly, allowing odors to escape. What should I do to ensure a proper seal?

Check if the lid gasket or seal is damaged or worn out. Replace the gasket if necessary to ensure a tight seal. Ensure that the lid closes completely and securely after each use.

VIDEO – PRODUCT OVERVIEW



[Download the PDF link: Joybos JBS-GYLJT-6711B-WT Automatic Trash Can Instruction Guide](#)
[Joybos JBS-GYLJT-6711B-WT Automatic Trash Can Instruction Guide.mp4](#)

References

- [User Manual](#)

[Manuals+](#), [Privacy Policy](#)

This website is an independent publication and is neither affiliated with nor endorsed by any of the trademark owners. The "Bluetooth®" word mark and logos are registered trademarks owned by Bluetooth SIG, Inc. The "Wi-Fi®" word mark and logos are registered trademarks owned by the Wi-Fi Alliance. Any use of these marks on this website does not imply any affiliation with or endorsement.