

JOY worker JW-FDS201-W Double Column Mobile Desk



JOY worker JW-FDS201-W Double Column Mobile Desk Instruction Manual

[Home](#) » [JOY worker](#) » JOY worker JW-FDS201-W Double Column Mobile Desk Instruction Manual 

Contents

- [1 JOY worker JW-FDS201-W Double Column Mobile Desk](#)
- [2 Product Usage Instructions](#)
- [3 SPECIFICATIONS](#)
- [4 COMPONENT LIST](#)
- [5 Assemble casters](#)
- [6 FUNCTION DISPLAY](#)
- [7 Documents / Resources](#)
 - [7.1 References](#)



JOY worker JW-FDS201-W Double Column Mobile Desk



Specifications

- Desktop Size: 500mm x 800mm / 19.6" x 31.5"
- Adjustable Height: 730-1090mm / 28.7-42.9"
- Overall Height: 765mm / 30.1"
- Lifting Range: 73-109cm
- Max Load Capacity: 33lbs / 15kg

Product Usage Instructions

Component Assembly

- **Step 1:** Assemble casters to the base using the provided wrench and bolts.
- **Step 2:** Attach the base to the desk columns using the M6x40mm bolts and the Allen Key (S=4mm).
- **Step 3:** Attach the crossbar to the desk columns using the M6x30mm bolts and Allen Key (S=4mm).
- **Step 4:** Assemble the handle and side plates using the M6x30mm bolts and Allen Key (S=4mm).
- **Step 5:** Assemble the desktop using the M5x12mm bolts and Allen Key (S=4mm).

Function Display

Press and hold the button to lift the desk up and down. The desk features a cup holder, headphone hook, and lockable casters for convenience.

Tip: Adjust the casters to level off uneven tables when shaking.

FAQ

Q: How do I adjust the height of the desk?

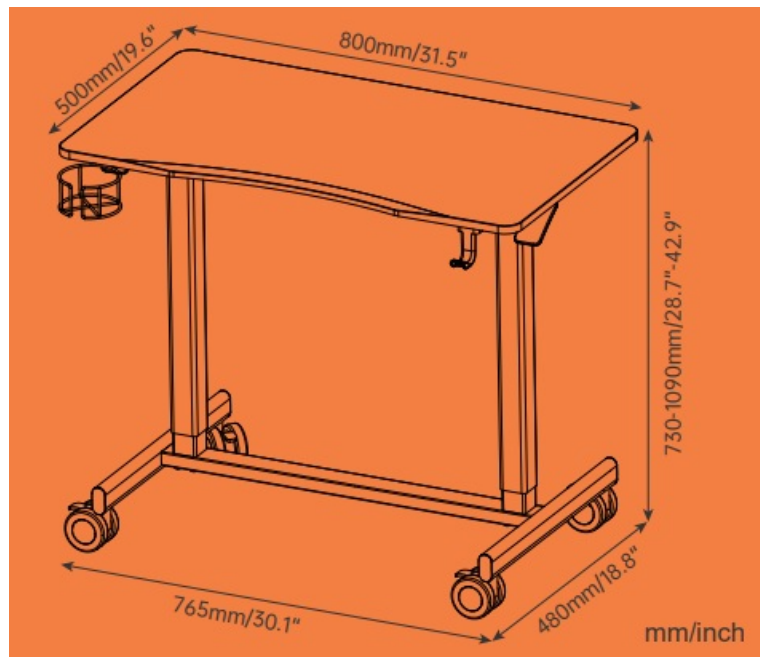
A: Press and hold the lift button to adjust the height of the desk.

Q: What is the maximum weight capacity of the desk?

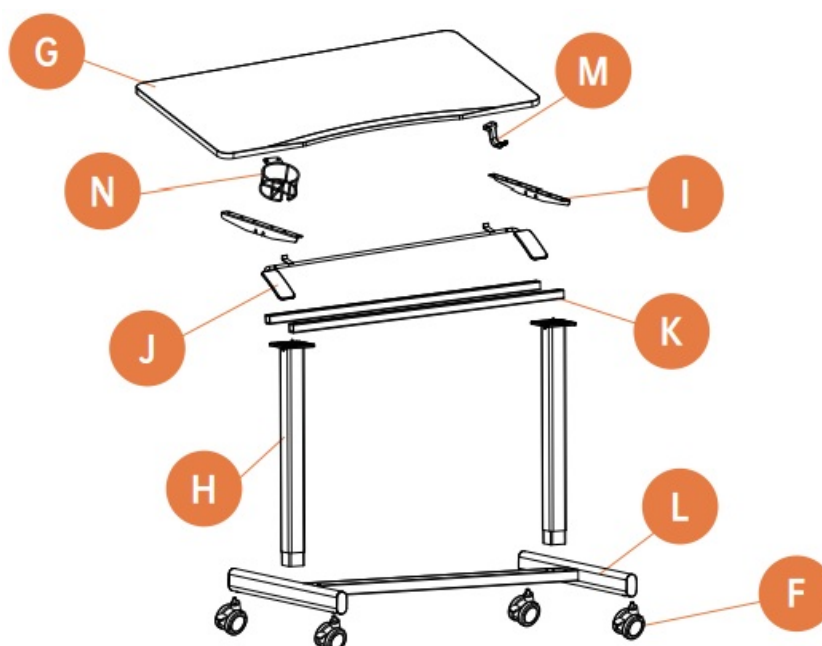
A: The desk can support a maximum load of 33lbs (15kg).

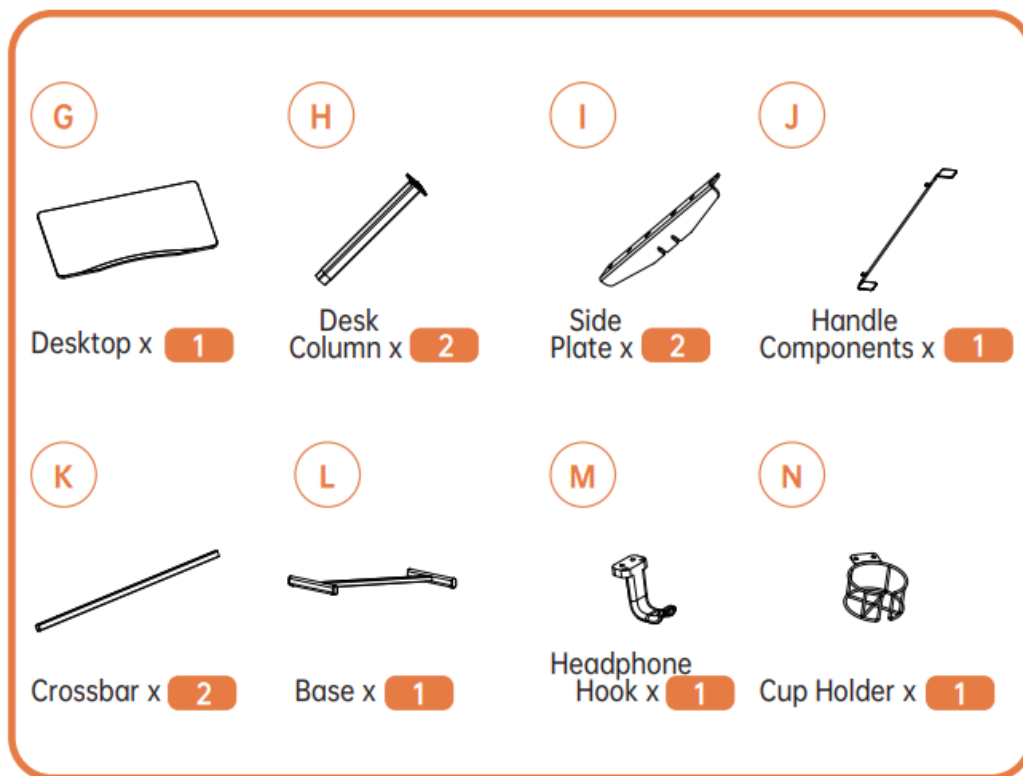
Thank you for choosing this product.

SPECIFICATIONS

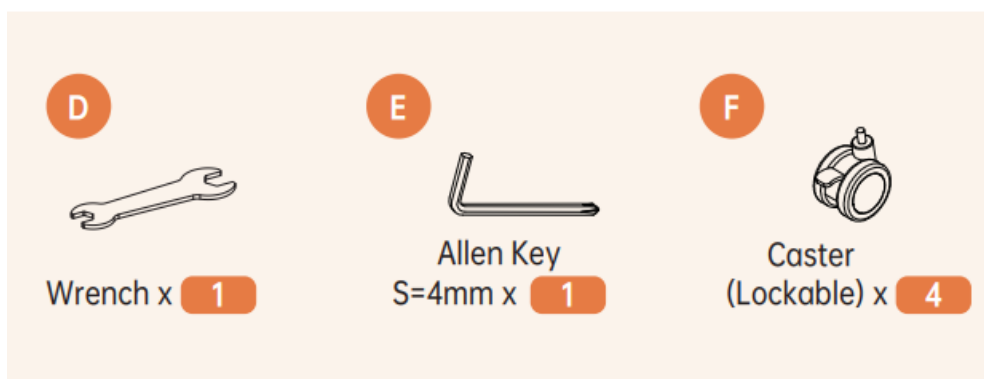
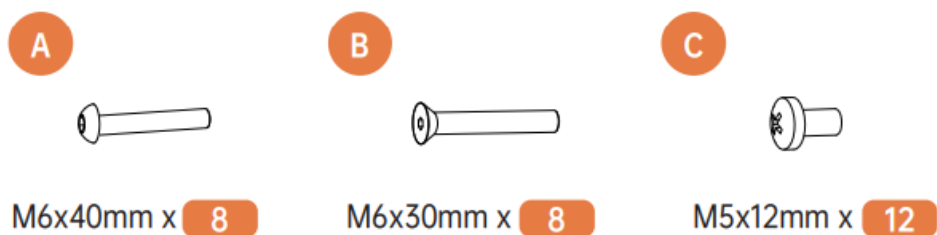


COMPONENT LIST



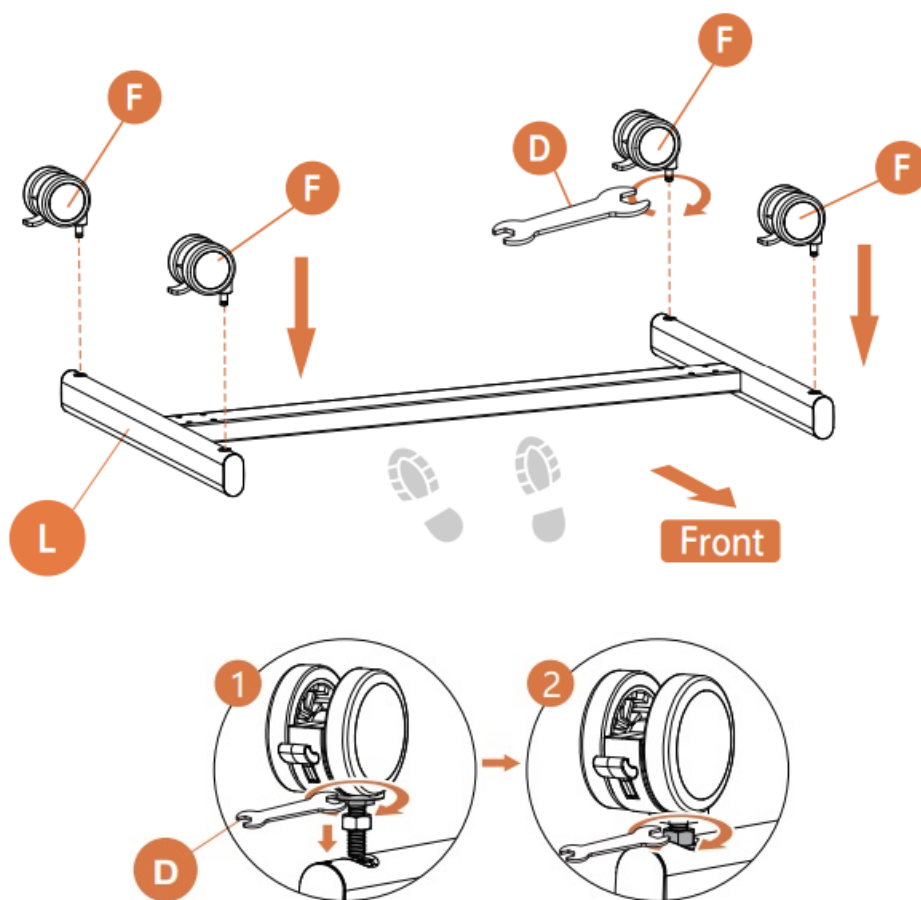


HARDWARE LIST



Assemble casters

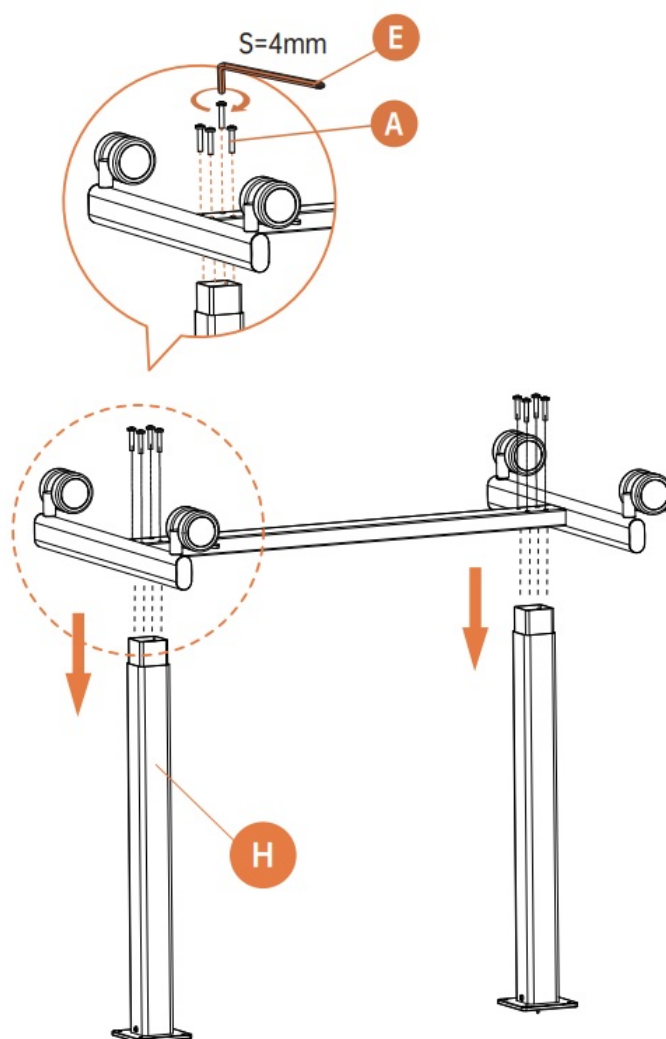
STEP 1



Turn the hex bolts with wrench, and screw the casters into the base, finally fix the nuts with wrench.

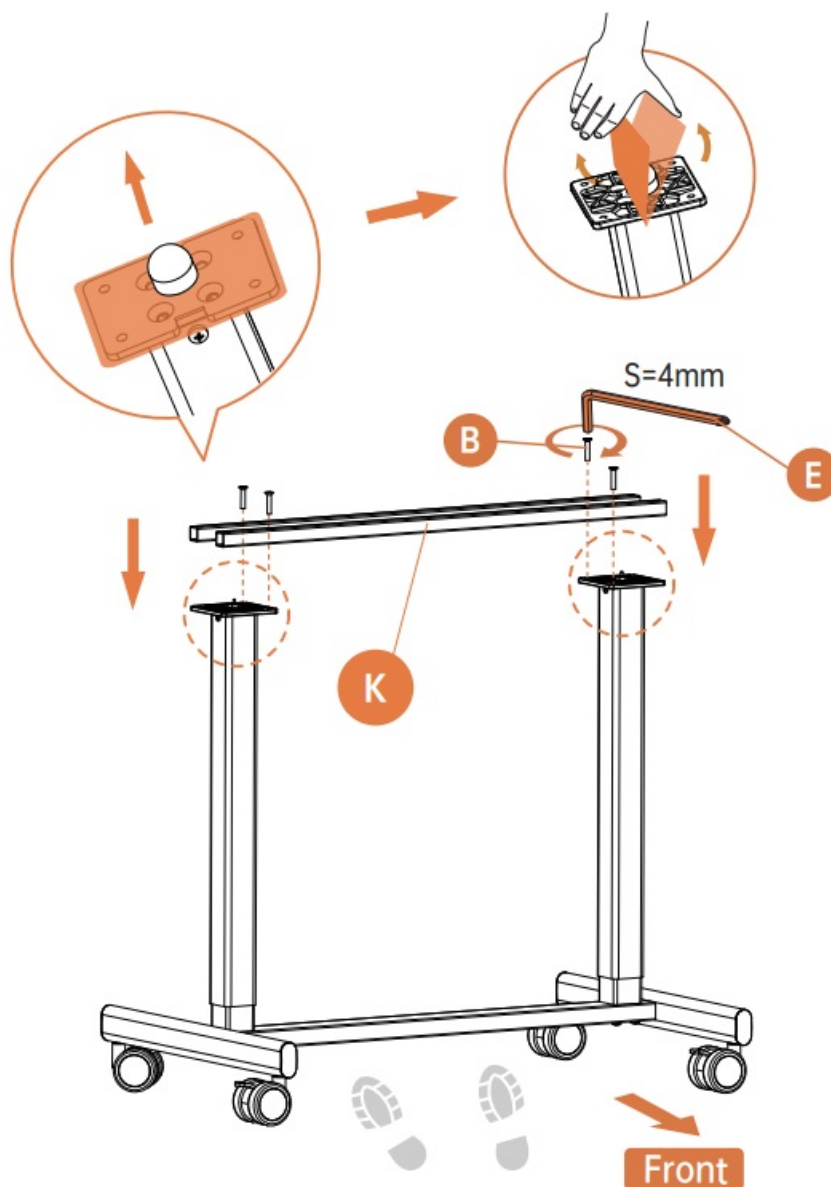
STEP 2

Attach the base to the desk columns



STEP 3

Attach the cross bar to the desk columns



Note: Remove the plastic cap before installing to the cross bar .

Step 4

Assemble the handle & side plates

B

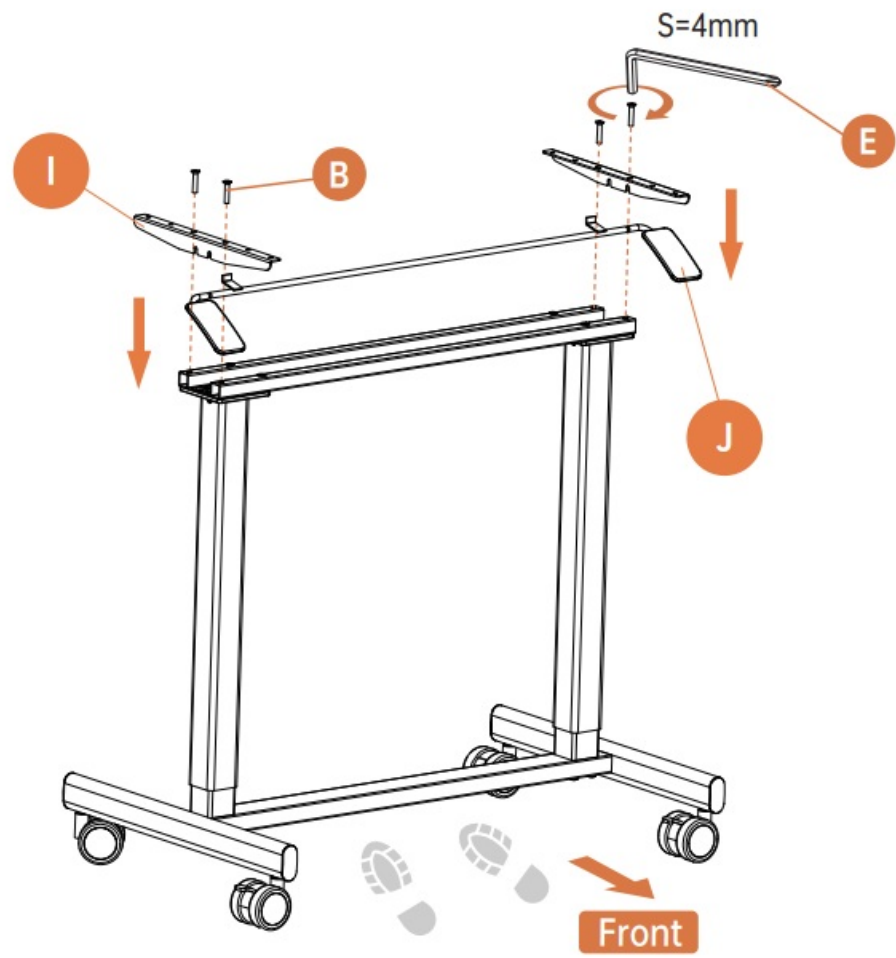


M6x30mm (x4)

E



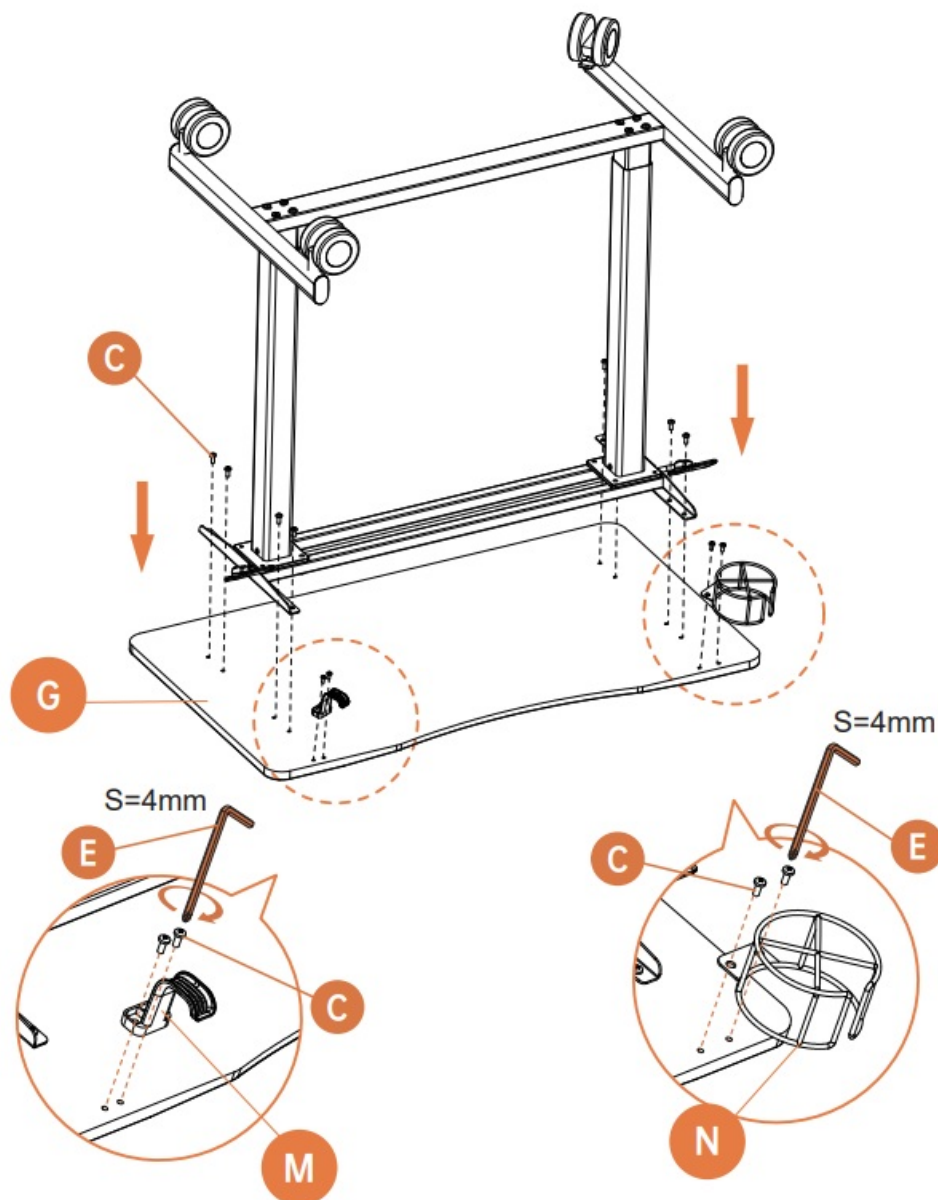
S=4mm (x1)



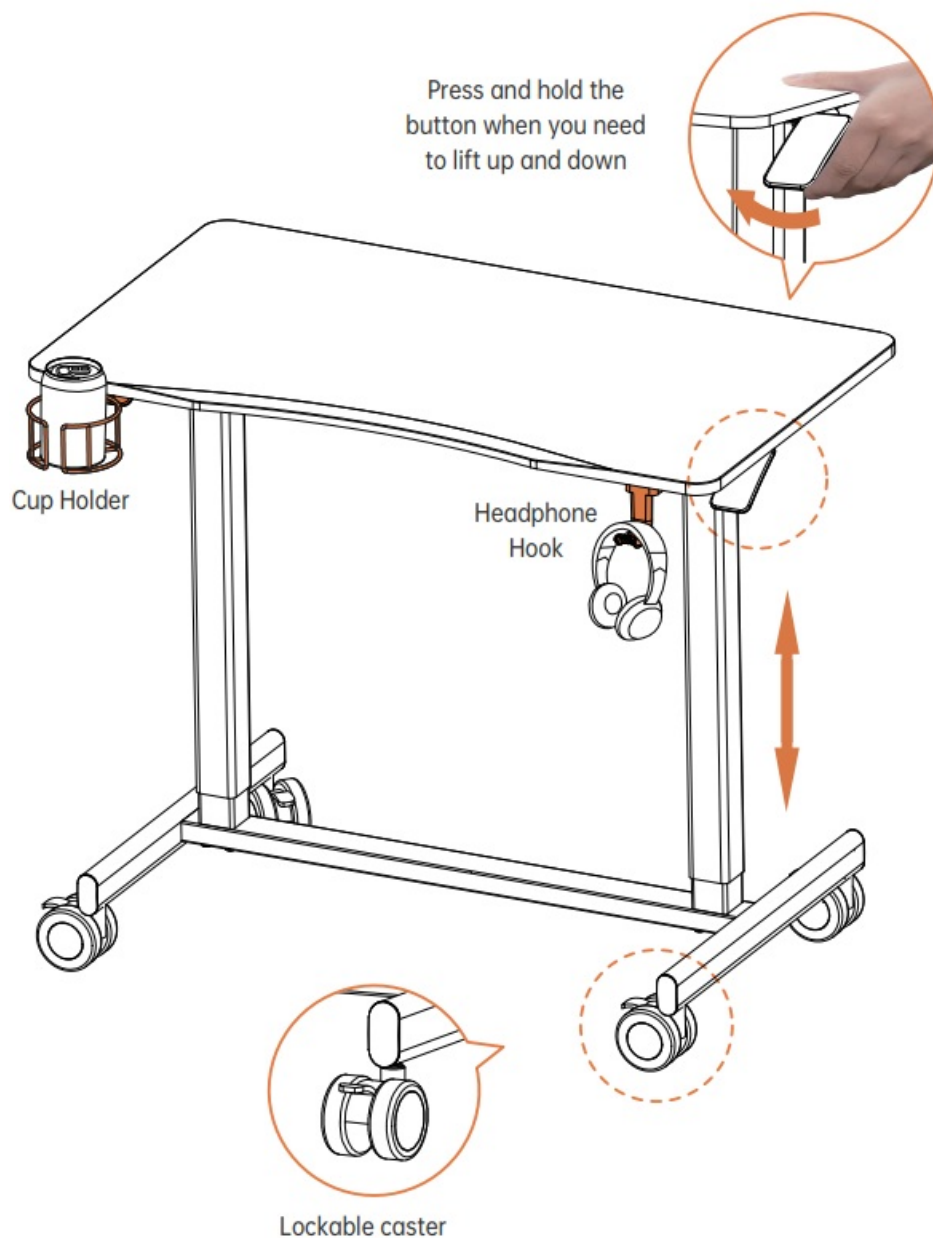
Step 5

Assemble desktop

C	 M5x12mm (x12)	E	 S=4mm (x1)
----------	--	----------	--



FUNCTION DISPLAY



WARNING

Tip: adjust casters to level off uneven tables when shaking

Official After-sales Channels

Account & Lists
↓
Orders - Get help
↓
Choose your problem

Describe your problem
↓
Send



[JOY worker JW-FDS201-W Double Column Mobile Desk](#) [pdf] Instruction Manual
JW-FDS201-W Double Column Mobile Desk, JW-FDS201-W, Double Column Mobile Desk, Column Mobile Desk, Mobile Desk, Desk

References

- [User Manual](#)

Manuals+. [Privacy Policy](#)

This website is an independent publication and is neither affiliated with nor endorsed by any of the trademark owners. The "Bluetooth®" word mark and logos are registered trademarks owned by Bluetooth SIG, Inc. The "Wi-Fi®" word mark and logos are registered trademarks owned by the Wi-Fi Alliance. Any use of these marks on this website does not imply any affiliation with or endorsement.