

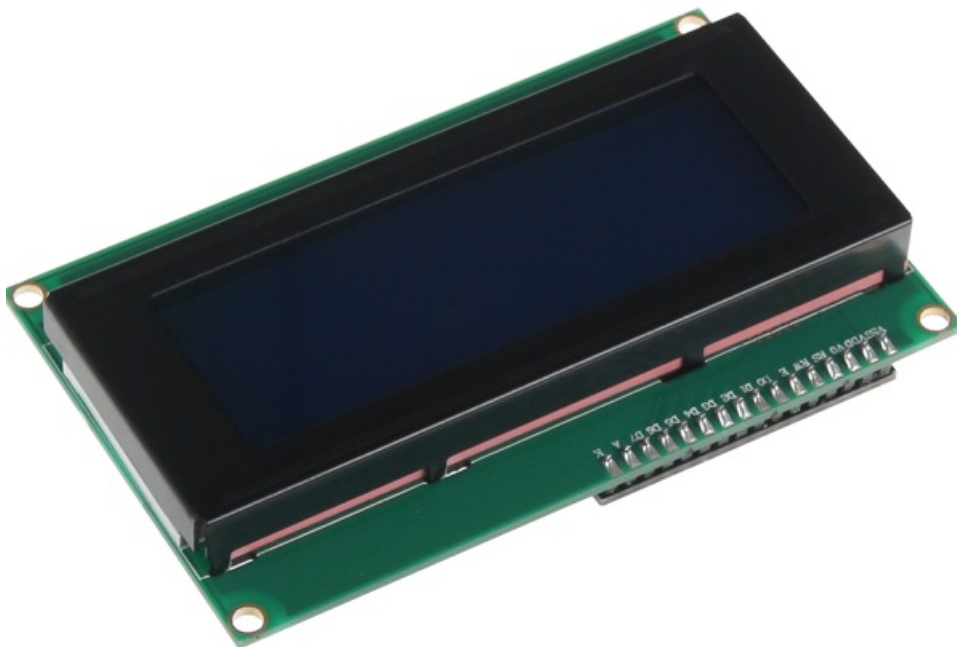


joy-it I2C Serial 16×2 LCD Module User Manual

[Home](#) » [JOY-It](#) » joy-it I2C Serial 16×2 LCD Module User Manual 

JOY-IT

20X4 LCD MODULE
I2C serial



Contents

- 1 GENERAL INFORMATION
- 2 USE WITH AN ARDUINO
- 3 USAGE OF THE RASPBERRY PI
- 4 OTHER INFORMATION
- 5 SUPPORT
- 6 Documents / Resources
 - 6.1 References

GENERAL INFORMATION

Dear customer,

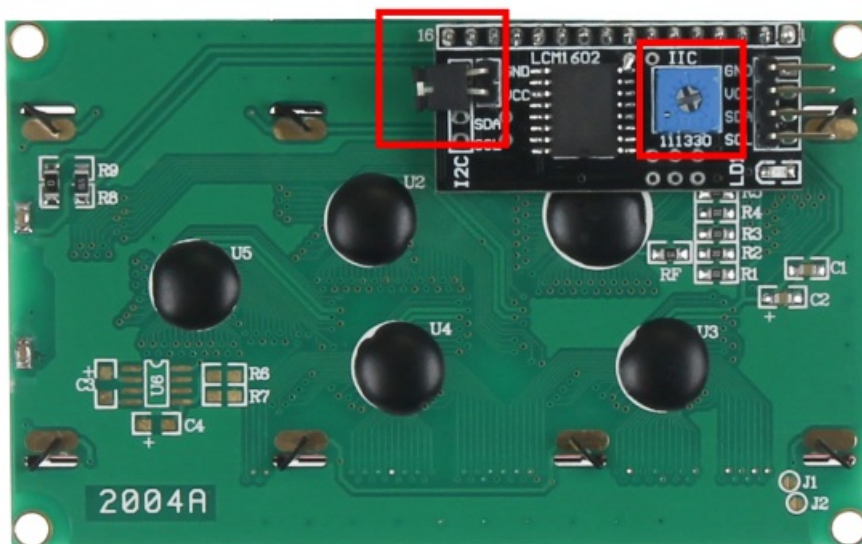
Thank you for purchasing our product. In the following, we will show you which things should be noted during the use.

Should you encounter any unexpected problems, do not hesitate to contact us.

Note

On the back of the display, besides the connections, there is a potentiometer and a jumper.

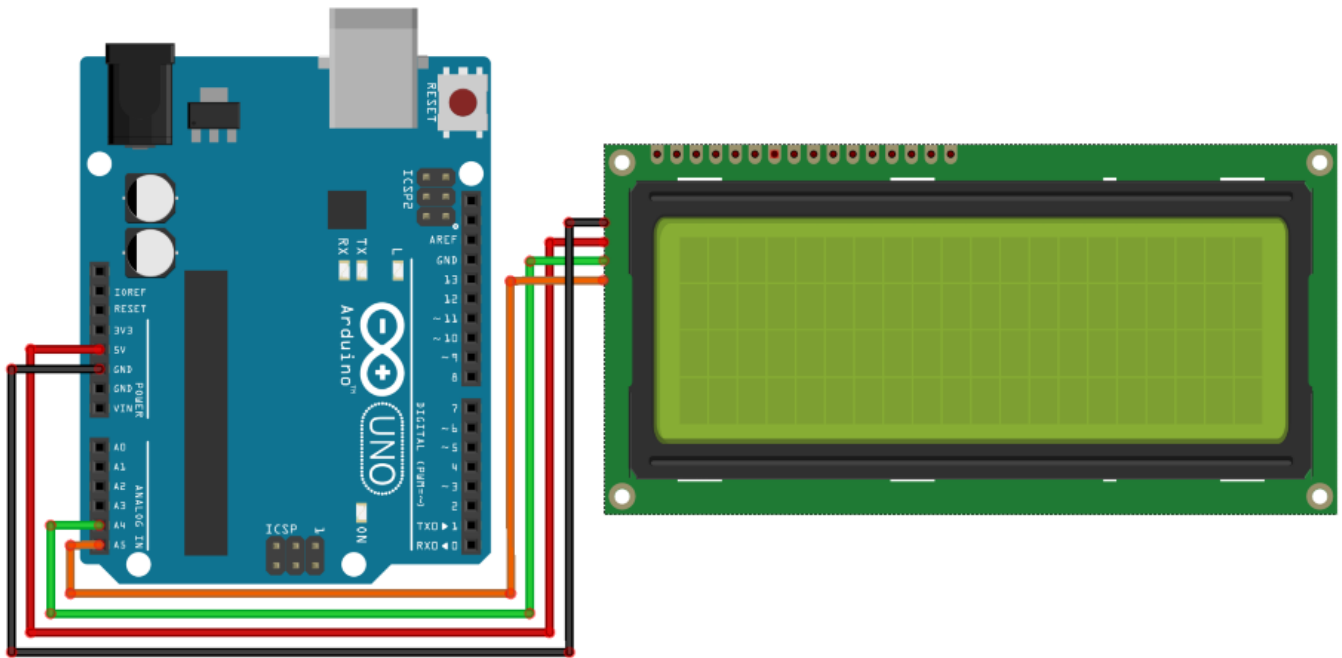
The potentiometer is used to adjust the contrast of the display and by removing the jumper, you can permanently turn off the display's backlight.



USE WITH AN ARDUINO

Connecting the display

Connect the display to the pins of your Arduino like shown in the picture or rather in the chart.



This picture was made in [Fritzing](#).

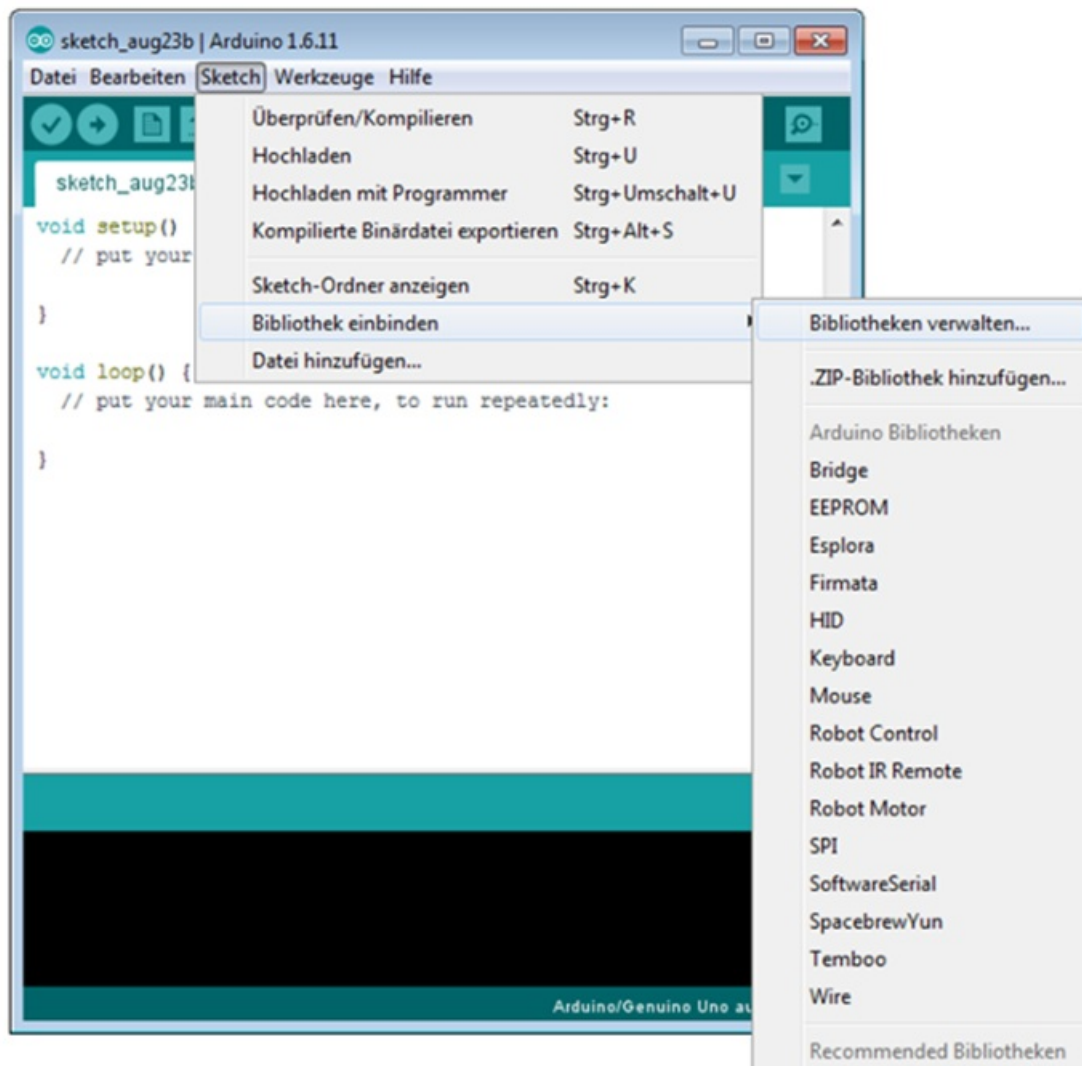
Arduino® Uno	20 x 4 LCD
GND	GND
5 V	VCC
SDA	SDA
SCL	SCL

Installation of the library

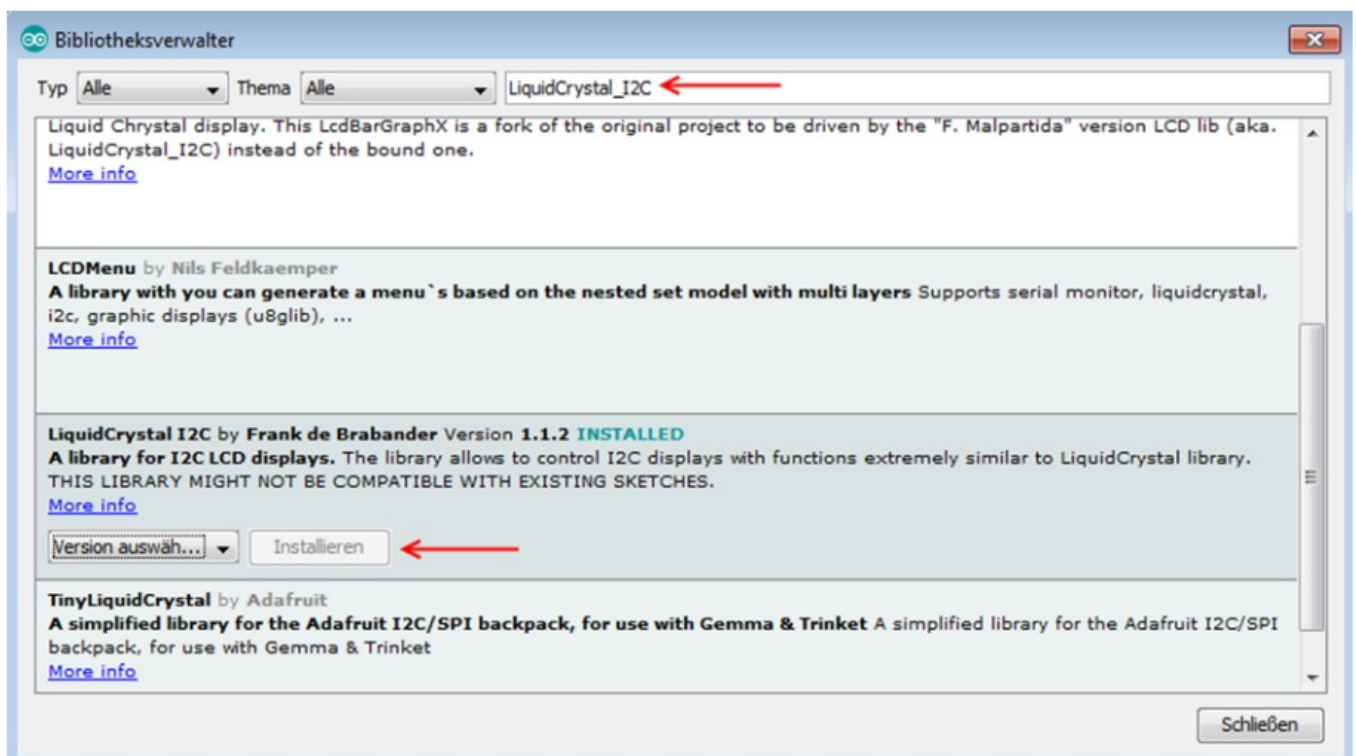
Before you can transfer the code example to your Arduino, you must install first the additional library LiquidCrystal_I2C.

This library allows you an easy and fast usage of the display.

Therefore, open the library manager on your Arduino software.



Search now in the library manager for the LiquidCrystal_I2C library and install it.



As soon as the library is installed, the installation of the display is finished.

You can now transfer the code example which is described in the next step and test the display.

Code example

In the following, you can use the code example to test the usage with your display. Copy this example completely on your Arduino.

Because of the different hardware addresses of the display, you must use the right address in the code.

Should your display not perform the desired action within the first try, change the address in the provided lines.

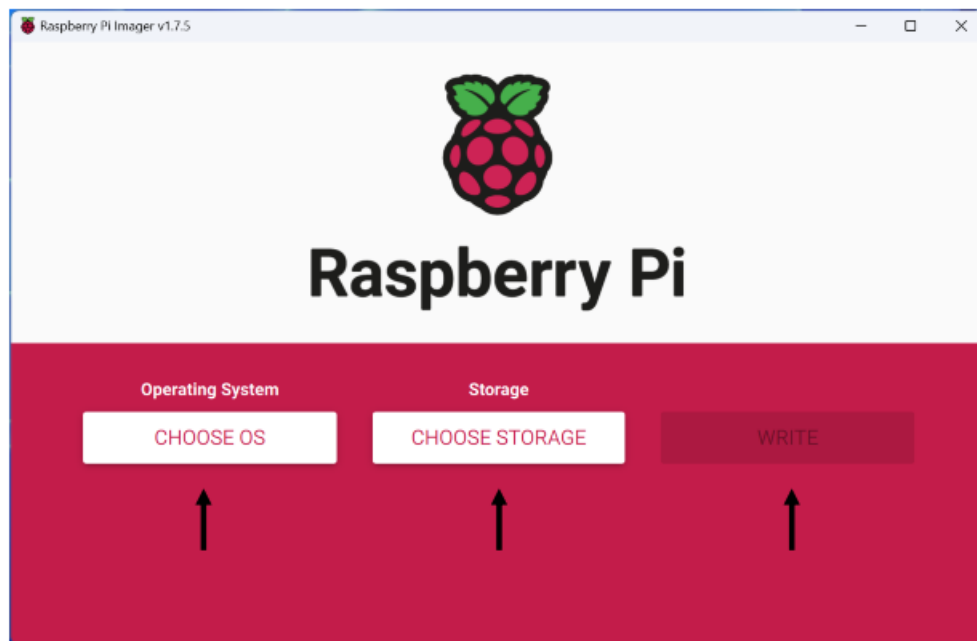
```
#include <Wire.h>
#include <LiquidCrystal_I2C.h>
//-----Hardware Adressing-----
//In case of wrong function please comment out the upper line,
//and release the lower line
LiquidCrystal_I2C lcd(0x27,20,4);
//LiquidCrystal_I2C lcd(0x3F,20,4);
void setup()
{
    lcd.init();
}
void loop()
{
    lcd.backlight();
    //output message
    lcd.setCursor(0,0);
    lcd.print(" joy-IT");
    lcd.setCursor(0,1);
    lcd.print(" ");
    lcd.setCursor(0,2);
    lcd.print(" I2C Serial");
    lcd.setCursor(0,3);
    lcd.print(" LCD");
}
```

USAGE OF THE RASPBERRY PI

Installation of the software

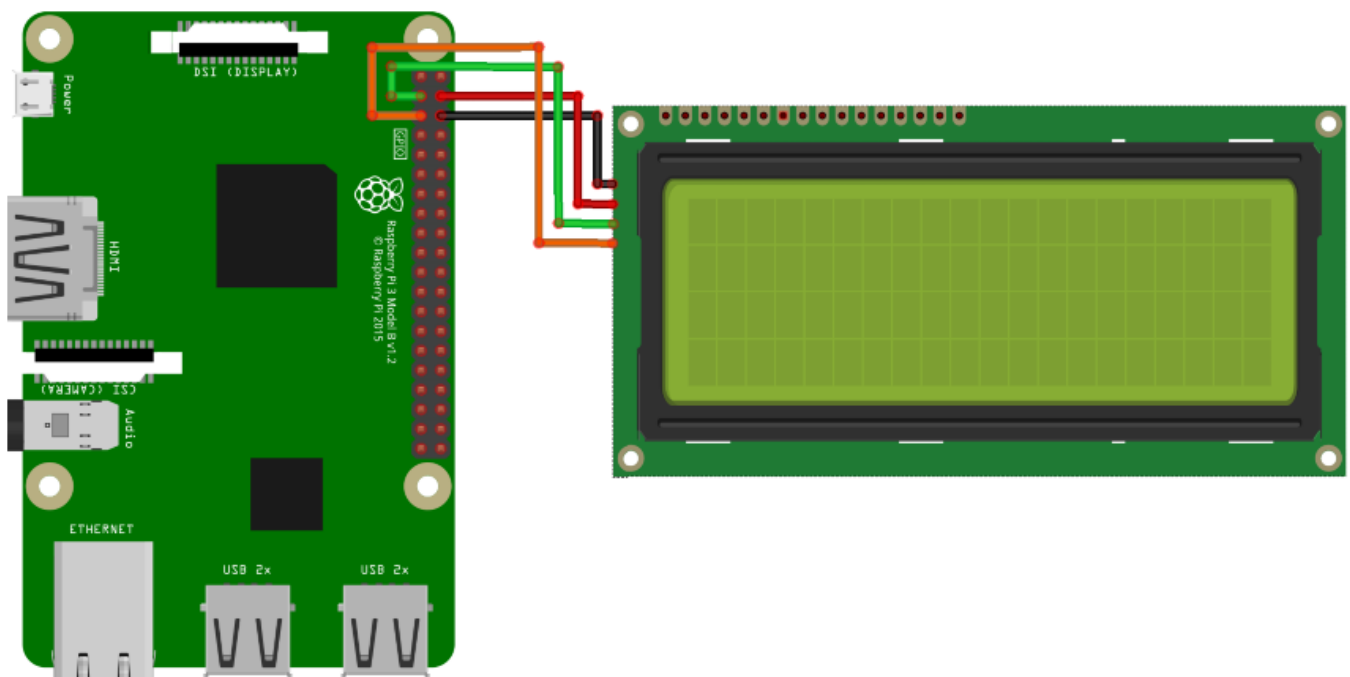
Should you already have the latest Raspbian system on your Raspberry Pi, you can skip this step and you can continue with the next step.

Install the latest Raspberry Pi OS on your SD card using the [Raspberry Pi Imager](#). To do this, select your preferred operating system and SD card and click on Write.



Connecting the display

Connect the display to the pins of your Raspberry Pi like shown in the picture or rather in the chart.



This picture was made in [Fritzing](#).

Raspberry Pi	20 x 4 LCD
Pin 6 (Ground)	GND
Pin 4 (5 V)	VCC
Pin 3 (BCM 2 / SDA)	SDA
Pin 5 (BCM 3 / SCL)	SCL

Installation of the libraries

As soon as the installation is finished and the system is restarted, open the terminal and perform the following commands:

```
sudo apt-get install python-pip python-dev build-essential
```

```
sudo pip install RPi.GPIO
```

```
sudo apt-get install python-imaging
```

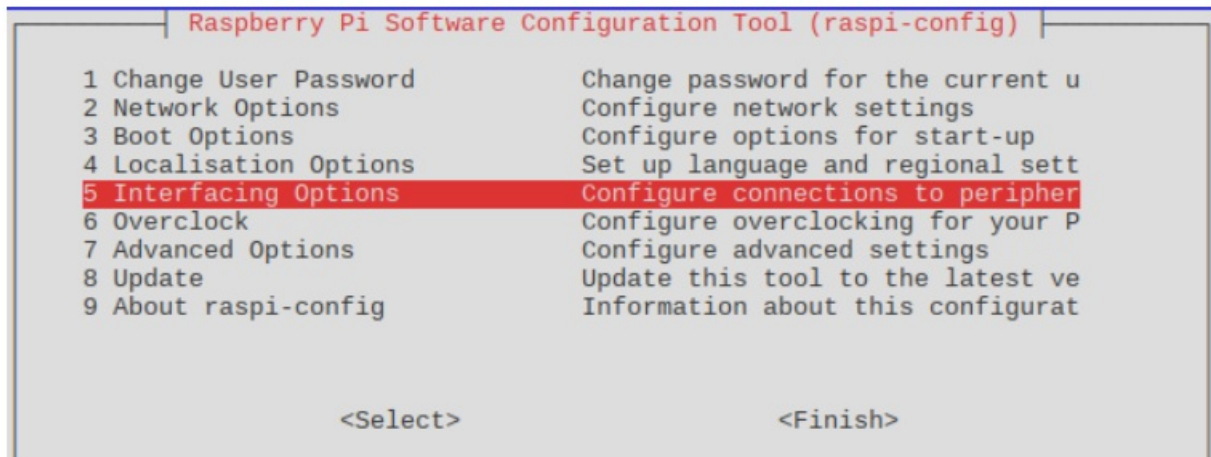
```
sudo apt-get install python-smbus i2c-tools
```

If the I2C function is not activated on your Raspberry Pi, you must catch this up in the settings.

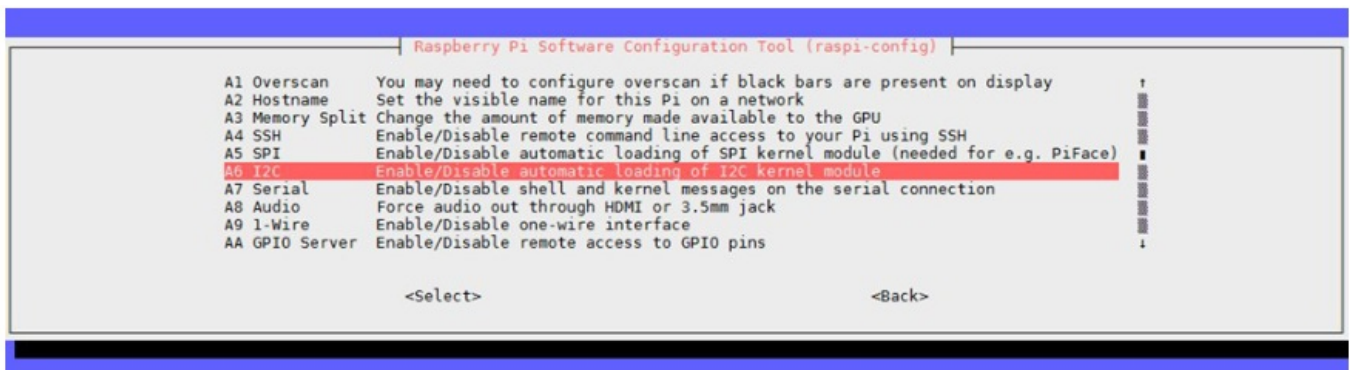
Therefore, open the settings with the following command:

```
sudo raspi-config
```

In the just opened window choose the option Interfacing Options.



Here choose and activate I2C.



Afterwards, you must add the according entry into the module file.

Therefore, open the module file:

```
sudo nano /etc/modules
```

Add the following two lines at the end of the file:

```
i2c-bcm2708
```

```
i2c-dev
```

Save now the file with the key combination CTRL + O. After that you can leave the editor with CTRL+ X . Restart now your Raspberry Pi with the following command:

```
sudo reboot
```

Now, we can download the LCD driver.

To allow you a as fast and easy beginning as possible, we use the "I2C_LCD_driver.py" from Denis From HR.

This is released by the GNU General Public License v3.0 and can be opened here.

As the first step, we create a new folder for the driver package and the example script and download them afterwards (No significant changes to the Script need to be done after the download):

```
mkdir I2C-LCD && cd I2C-LCD
```

```
wget https://joy-it.net/files/files/Produkte/SBC-LCD20x4/20x4_LCD_MODUL.zip
```

```
unzip 20x4_LCD_MODUL.zip
```

Now you must read the I2C address.

Please note that the display must be connected first.

```
sudo i2cdetect -y 1
```

The output will show the following:

```
      0  1  2  3  4  5  6  7  8  9  a  b  c  d  e  f
00:                -- -- -- -- -- -- -- -- -- --
10: -- -- -- -- -- -- -- -- -- -- -- -- -- --
20: -- -- -- -- -- -- -- 27 -- -- -- -- -- --
30: -- -- -- -- -- -- -- -- -- -- -- -- -- --
40: -- -- -- -- -- -- -- -- -- -- -- -- -- --
50: -- -- -- -- -- -- -- -- -- -- -- -- -- --
60: -- -- -- -- -- -- -- -- -- -- -- -- -- --
70: -- -- -- -- -- -- -- -- -- -- -- -- -- --
```

The just started test has recognized the I2C signal at the address 27. This is the standard address of the display. But it also can be found at another saving address. In such a case, you must change the saving address in the settings of the driver to your own address.

Therefore, open the driver file with the following command:

```
sudo nano lcddriver.py
```

In the line with ADDRESS=0x27 , you must change the 27 to your own saving address which was shown in the I2C test. Afterwards, you can leave the editor with the frequently used key combination.

Communication with the display

The installation of the display is now finished. As the last step you can now inspect the file, to edit it to your wishes, test the display or take it directly into use.

```
sudo nano LCD.py
```

The text within the command lcd. lcd display string will be shown on the display.

The number behind the text issues the line in which the text will be shown in.

The text can be of course modified to your desires. The editor can be left with the fundamental key combination.

```
import lcddriver
from time import *

lcd = lcddriver.lcd()
lcd.lcd_clear()

try:
    while True:
        lcd.lcd_display_string("    joy-IT", 1)
        lcd.lcd_display_string("", 2)
        lcd.lcd_display_string("    I2C Serial", 3)
        lcd.lcd_display_string("    LCD", 4)

        sleep(100)
except KeyboardInterrupt:
    lcd.lcd_clear()
```

Start now the code example with the following command:

```
sudo python LCD.py
```

OTHER INFORMATION

Our Information and Take-back Obligations according to the Electrical and Electronic Equipment Act (ElektroG)

Symbol on Electrial and Electronic Products:

This crossed-out bin means that electrical and electronic products do not belong into the household waste. You must hand over your old appliance to a registration place. Before you can hand over the old appliance, you must remove used batteries and replacement batteries which are not enclosed by the device.

Return Options:

As the end user, you can hand over your old appliance (which has essentially the same functions as the new one bought with us) free of charge for disposal with the purchase of a new device.

Small devices, which do not have outer dimensions bigger than 25 cm can be handed in for disposal independently of the purchase of a new product in normal household quantities.

1. Possibility of return at our company location during our opening hours SIMAC Electronics GmbH, Pascals. 8, D-47506 Neukirchen-Vluyn

2. Possibility of return nearby

We will send you a parcel stamp with which you can send us your old appliance free of charge. For this possibility, please contact us via e-mail at service@joy-it.net or via telephone.

Information about Package:

Please package your old appliance safe for transport. Should you not have suitable packaging material or you do not want to use your own material, you can contact us and we will send you an appropriate package.

SUPPORT

If any questions remained open or problems may arise after your purchase, we are available by e-mail, telephone and ticket support system to answer these.

E-Mail: service@joy-it.net

Ticket-system: <http://support.joy-it.net>

Telephone: +49 (0)2845 9360 – 50 (Mon – Thur: 10:00 – 17:00 o'clock,



Published: 19.09.2023

www.joy-it.net

Pascalstr. 8 47506 Neukirchen-Vluyn

www.joy-it.net

SIMAC Electronics GmbH


Pascalstr. 8, 47506 Neukirchen-Vluyn

Fri: 10:00 – 14:30 o'clock)







For further information visit our website:

www.joy-it.net

Documents / Resources

	<p>joy-it I2C Serial 16x2 LCD Module [pdf] User Manual</p> <p>I2C Serial 16x2 LCD Module, I2C Serial, 16x2 LCD Module, LCD Module, Module</p>
---	---

References

-  [ITnet | Servizi di Colocation e Cloud](#)
-  [Joy-IT Helpdesk](#)
-  [For Makers and Professionals | Joy-IT](#)
-  [Welcome to Fritzing](#)
-  [20x4 LCD module | Joy-IT](#)
-  [Raspberry Pi OS – Raspberry Pi](#)