



## JOY-it COM-VM330 Voltage with 3-Digit LED Display User Manual

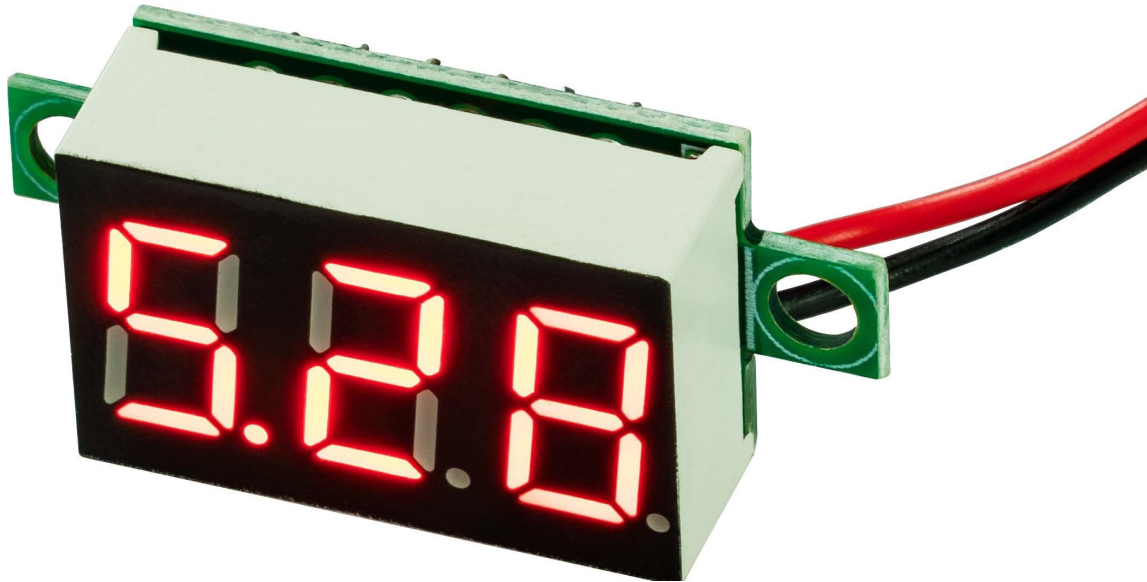
[Home](#) » [JOY-It](#) » JOY-it COM-VM330 Voltage with 3-Digit LED Display User Manual 

### Contents

- [1 JOY-it COM-VM330 Voltage with 3-Digit LED Display](#)
- [2 GENERAL INFORMATION](#)
- [3 USAGE](#)
- [4 OTHER INFORMATION](#)
- [5 SUPPORT](#)
- [6 Documents / Resources](#)
- [7 Related Posts](#)



## JOY-it COM-VM330 Voltage with 3-Digit LED Display



### GENERAL INFORMATION

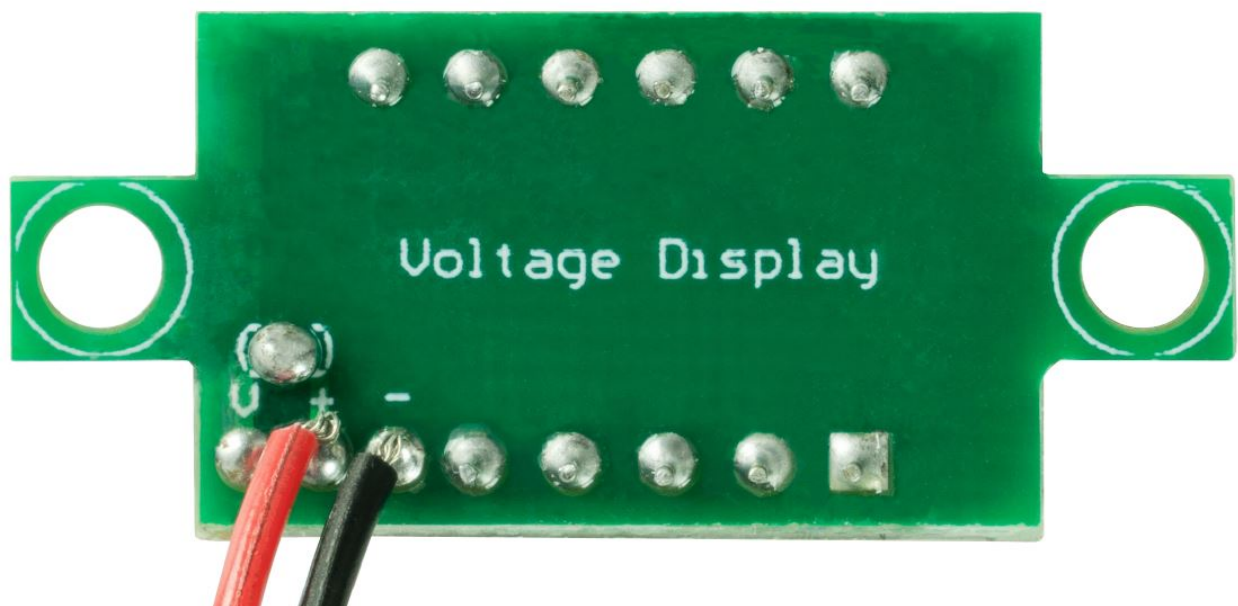
#### Dear customer,

Thank you for purchasing our product. In the following, we will show you which things should be noted during the use. Should you encounter any unexpected problems, do not hesitate to contact us.

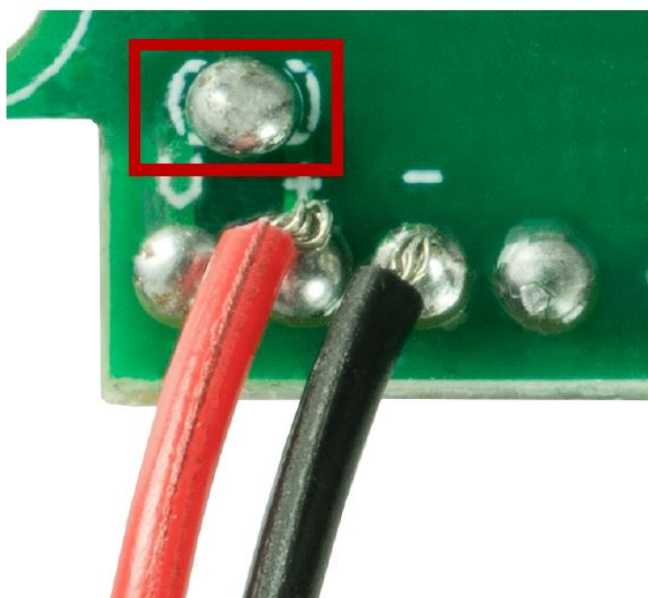
### USAGE

This voltmeter can measure DC voltages from 3 V to 30 V without requiring an additional power supply for the meter. To measure a voltage, connect the positive end of the voltage you want to measure to the positive terminal of the voltmeter (red wire) and the negative end of the voltage source to the negative terminal of the voltmeter (black wire).

V	+	-
Not connected	Measuring voltage + ( 3 V – 30 V)	Measuring voltage –



You can also measure voltages below 3 V with this voltmeter, but for this you have to supply power to the display regardless of the measuring voltage. This requires soldering, because you have to remove a solder bridge on the back of the unit and solder more wires to the board.



Now you have a new pin assignment on the measuring device. Please note that two ground connections must be connected to the negative terminal of the measuring device (black cable) (one for the measuring voltage and one for the supply voltage).

<b><u>New pin assignment</u></b>		
<b>V</b>	<b>+</b>	<b>–</b>
Measuring voltage + (0 – 30 V)	Supply voltage + (3V)	Measuring voltage – Supply voltage –

## OTHER INFORMATION

Our Information and Take-back Obligations according to the Electrical and Electronic Equipment Act (ElektroG)

### **The symbol on Electrical and Electronic Products:**

This crossed-out bin means that electrical and electronic products do not belong in the household waste. You must hand over your old appliance to a registration place. Before you can hand over the old appliance, you must remove used batteries and replace batteries that are not enclosed by the device.

### **Return Options:**

As the end-user, you can hand over your old appliance (which has essentially the same functions as the new one bought with us) free of charge for disposal with the purchase of a new device. Small devices, which do not have outer dimensions bigger than 25 cm can be handed in for disposal independently of the purchase of a new product in normal household quantities.

### **Possibility of return at our company location during our opening hours**

Simac Electronics Handel GmbH, Pascalstr. 8, D-47506 Neukirchen-Vluyn

### Possibility of return nearby

We will send you a parcel stamp with which you can send us your old appliance free of charge. For this possibility, please contact us via e-mail at [service@joy-it.net](mailto:service@joy-it.net) or via telephone.

### Information about Package

Please package your old appliance safe for transport. Should you not have suitable packaging material or you do not want to use your own material, you can contact us and we will send you an appropriate package.

## SUPPORT

If any questions remained open or problems may arise after your purchase, we are available by e-mail, telephone and ticket support system to answer these.

**E-Mail:** [service@joy-it.net](mailto:service@joy-it.net)

**Ticket-system:** <http://support.joy-it.net>

**Telephone:** +49 (0)2845 98469 – 66 (10 – 17 o'clock)

**For further information visit our website:**

[www.joy-it.net](http://www.joy-it.net)

**Published:** 02.08.2021

## Documents / Resources

	<p><a href="#">JOY-it COM-VM330 Voltage with 3-Digit LED Display</a> [pdf] User Manual COM-VM330, Voltage with 3-Digit LED Display</p>
--	--