

# JOY-iT COM-Mosfet Field Effect Transistor for Controlling Higher Voltages User Manual

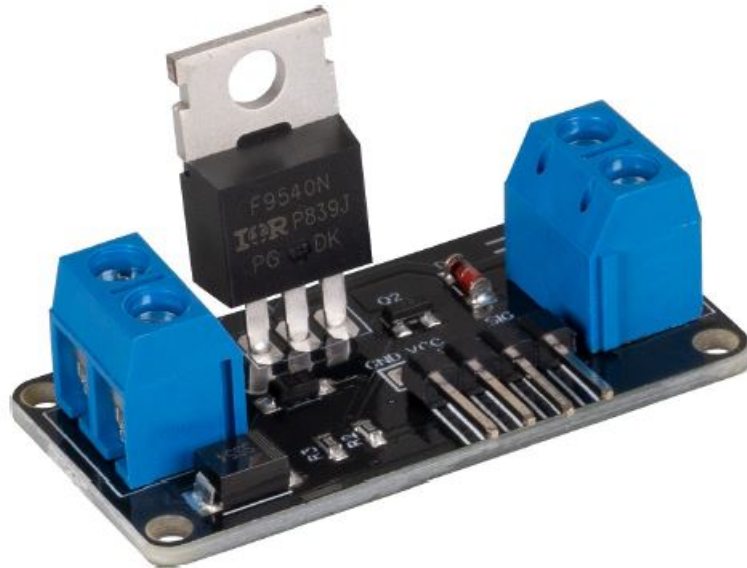
[Home](#) » [JOY-It](#) » JOY-iT COM-Mosfet Field Effect Transistor for Controlling Higher Voltages User Manual 

## Contents

- [1 JOY-iT COM-Mosfet Field Effect Transistor for Controlling Higher Voltages](#)
- [2 GENERAL INFORMATION](#)
- [3 COMMISSIONING WITH THE RASPBERRY PI](#)
- [4 COMMISSIONING WITH THE ARDUINO](#)
- [5 ADDITIONAL INFORMATION](#)
- [6 SUPPORT](#)
- [7 Documents / Resources](#)
  - [7.1 References](#)
- [8 Related Posts](#)



## JOY-iT COM-Mosfet Field Effect Transistor for Controlling Higher Voltages

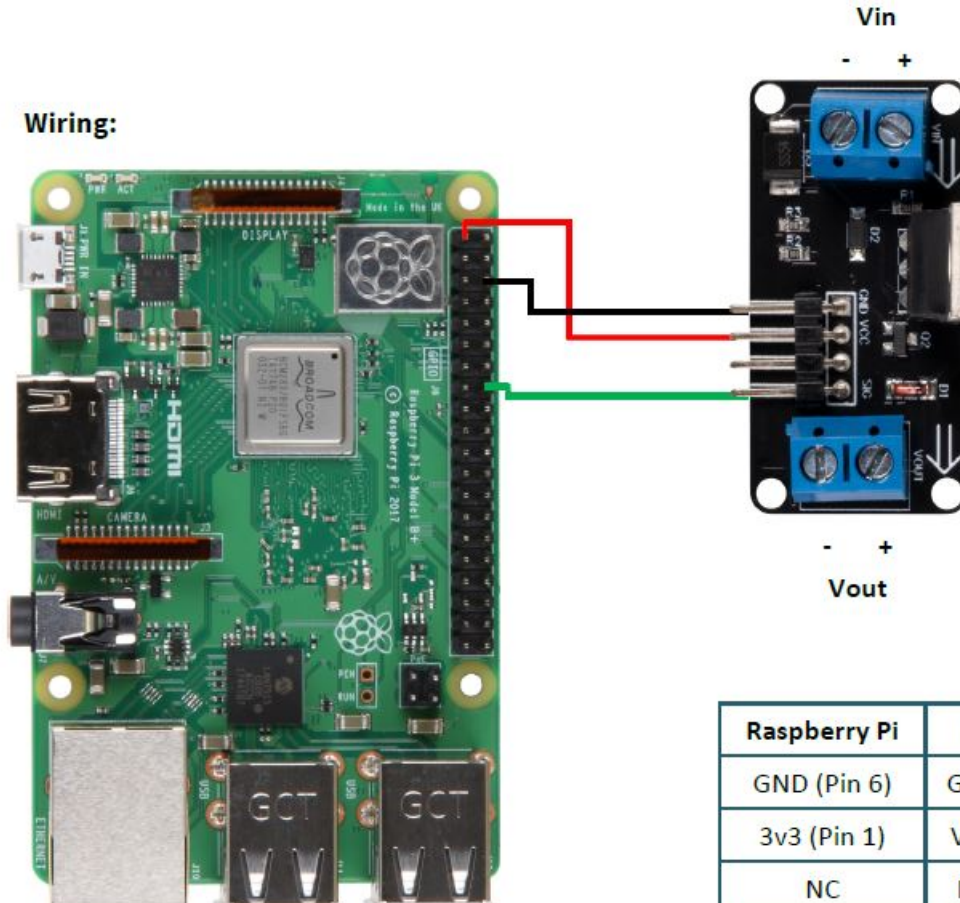


### GENERAL INFORMATION

Dear customer,  
thank you very much for choosing our product. In the following, we will introduce you to what to observe while starting up and using this product. Should you encounter any unexpected problems during use, please do not hesitate to contact us. The maximum permissible input voltage is 36 V. The maximum permissible operating current is 2 A. Never exceed these limits.

### COMMISSIONING WITH THE RASPBERRY PI

#### Wiring:



Raspberry Pi	Mosfet
GND (Pin 6)	GND (Pin1)
3v3 (Pin 1)	VCC (Pin2)
NC	NC (Pin3)
BCM23 (Pin 16)	Signal (Pin4)

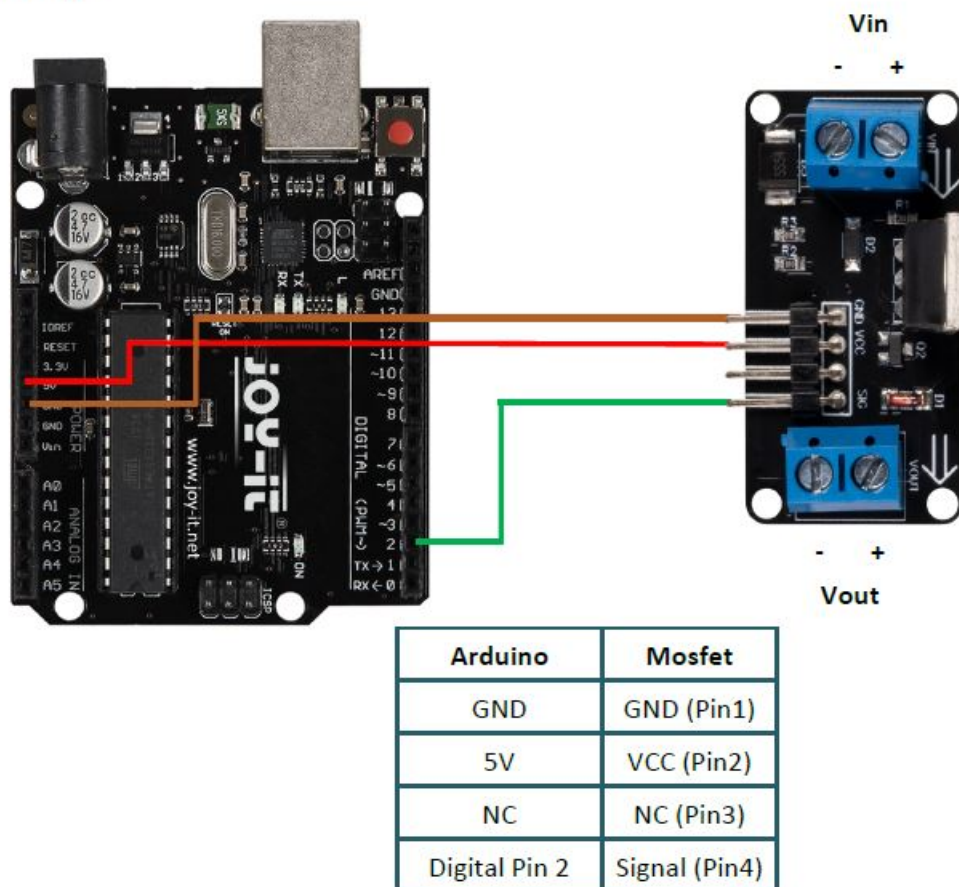
### Code example:

If the signal pin is set to high, the output is activated. In the following code example, the output is activated every 15 seconds for 10 seconds.

- from time import sleep
- import RPi.GPIO as GPIO
- GPIO.setmode(GPIO.BOARD) Signal\_Pin = 16
- GPIO.setup(Signal\_Pin, GPIO.OUT) try: GPIO.output(Signal\_Pin, GPIO.HIGH)
- print ("Output enabled") sleep (10)
- GPIO.output(Signal\_Pin, GPIO.LOW) print ("Output disabled") sleep (5)

## COMMISSIONING WITH THE ARDUINO

### Wiring:



### Code example:

If the signal pin is set to high, the output is activated. In the following code example, the output is activated every 15 seconds for 10 seconds. Before uploading, make sure that you have set the correct board and port in your Arduino IDE.

- Serial.begin(9600); pinMode(2, OUTPUT)
- digitalWrite(2, HIGH);
- Serial.println("Output enabled..."); delay(10000)
- digitalWrite(2, LOW);
- Serial.println("Output disabled..."); delay(5000)

## ADDITIONAL INFORMATION

Our information and take-back obligations according to the Electrical and Electronic Equipment Act (ElektroG)  
This crossed-out dustbin means that electrical and electronic appliances do not belong in the household waste. You must return the old appliances to a collection point. Before handing over waste batteries and accumulators that are not enclosed by waste equipment must be separated from it.

### Return options:

As an end user, you can return your old device (which essentially fulfils the same function as the new device purchased from us) free of charge for dis-posal when you purchase a new device. Small appliances with no external dimensions greater than 25 cm can be dis-posed of in normal household quantities independently of the purchase of a new appliance. Possibility of return at our company location during opening hours: SIMAC Electronics GmbH, Pascalstr. 8, D-47506 Neukirchen-Vluyn, Germany

### Possibility of return in your area:

We will send you a parcel stamp with which you can return the device to us free of charge. Please contact us by e-mail at [Service@joy-it.net](mailto:Service@joy-it.net) or by tele-phone.

### Information on packaging:


If you do not have suitable packaging material or do not wish to use your own, please contact us and we will send you suitable packaging.

## SUPPORT




If there are still any issues pending or problems arising after your purchase, we will support you by e-mail, telephone and with our ticket support system.

- E-Mail: [service@joy-it.net](mailto:service@joy-it.net)
- Ticket system: <http://support.joy-it.net>
- Telephone: +49 (0)2845 9360-50 (10-17 o'clock)
- For further information please visit our website: [www.joy-it.net](http://www.joy-it.net)

## Documents / Resources

	<p><b><a href="#">JOY-iT COM-Mosfet Field Effect Transistor for Controlling Higher Voltages</a></b> [pdf] User Manual</p> <p>COM-Mosfet, Field Effect Transistor for Controlling Higher Voltages, COM-Mosfet Field Effect Transistor, Field Effect Transistor, COM-Mosfet Field Effect Transistor for Controlling Higher Voltages</p>
---	---

## References

-  [ITnet | Servizi di Colocation e Cloud](#)
-  [Joy-IT Helpdesk](#)
-  [For Makers and Professionals | Joy-IT](#)