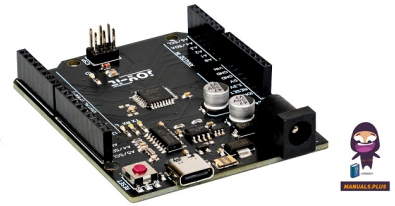


JOY-it
ARD-One-C
Microcontroller
Board



JOY-it ARD-One-C Microcontroller Board User Manual

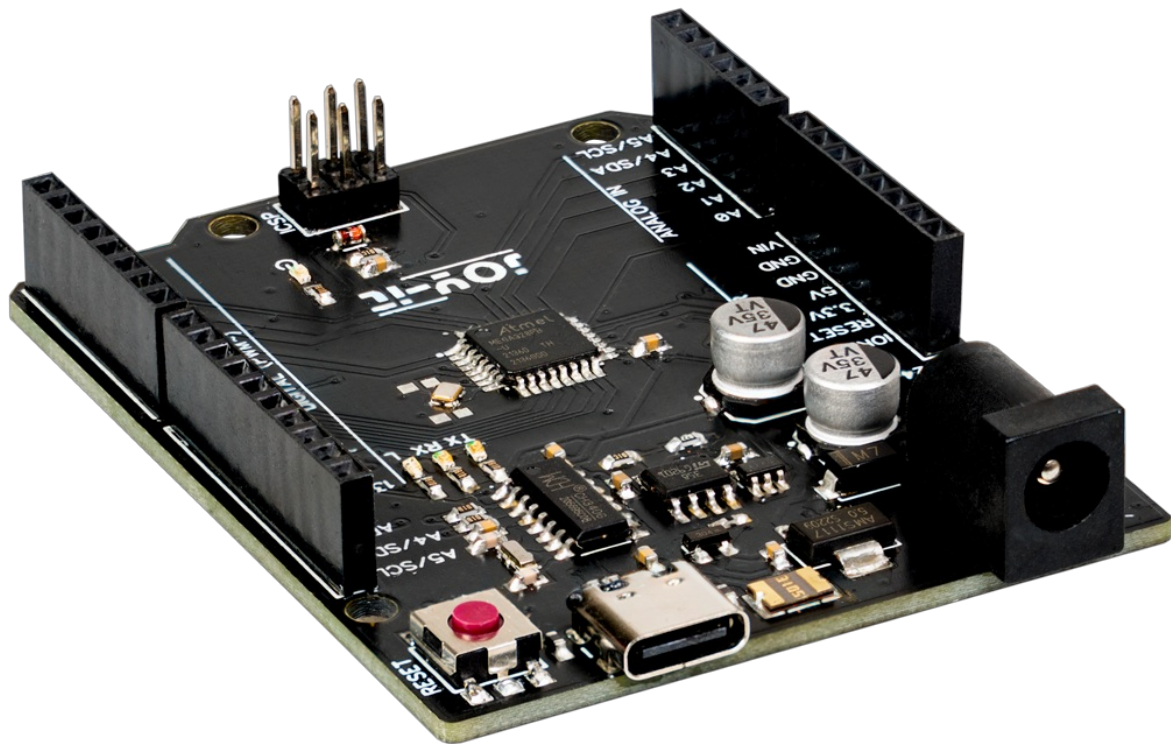
[Home](#) » [JOY-It](#) » JOY-it ARD-One-C Microcontroller Board User Manual 

Contents

- [1 JOY-it ARD-One-C Microcontroller Board](#)
- [2 Specifications](#)
- [3 FAQs](#)
- [4 GENERAL INFORMATION](#)
- [5 DEVICE OVERVIEW](#)
- [6 SOFTWARE SETUP](#)
- [7 CODE EXAMPLE](#)
- [8 INFORMATION & TAKE-BACK OBLIGATIONS](#)
- [9 SUPPORT](#)
- [10 Documents / Resources](#)
 - [10.1 References](#)

JOY-it

JOY-it ARD-One-C Microcontroller Board



Specifications

- Microcontroller: ATmega328PB
- Dimensions: 68 x 53 mm
- Digital Inputs/Outputs: 14
- Analog Inputs: 6
- Compatibility: Arduino UNO

FAQs

- **Q: Can I use the ARD-ONE-C board with a different microcontroller?**
 - A: No, the ARD-ONE-C board is specifically designed for use with the ATmega328PB microcontroller.
- **Q: How can I troubleshoot unexpected problems with the board?**
 - A: If you encounter any issues, please contact us for assistance and guidance in resolving the problems.

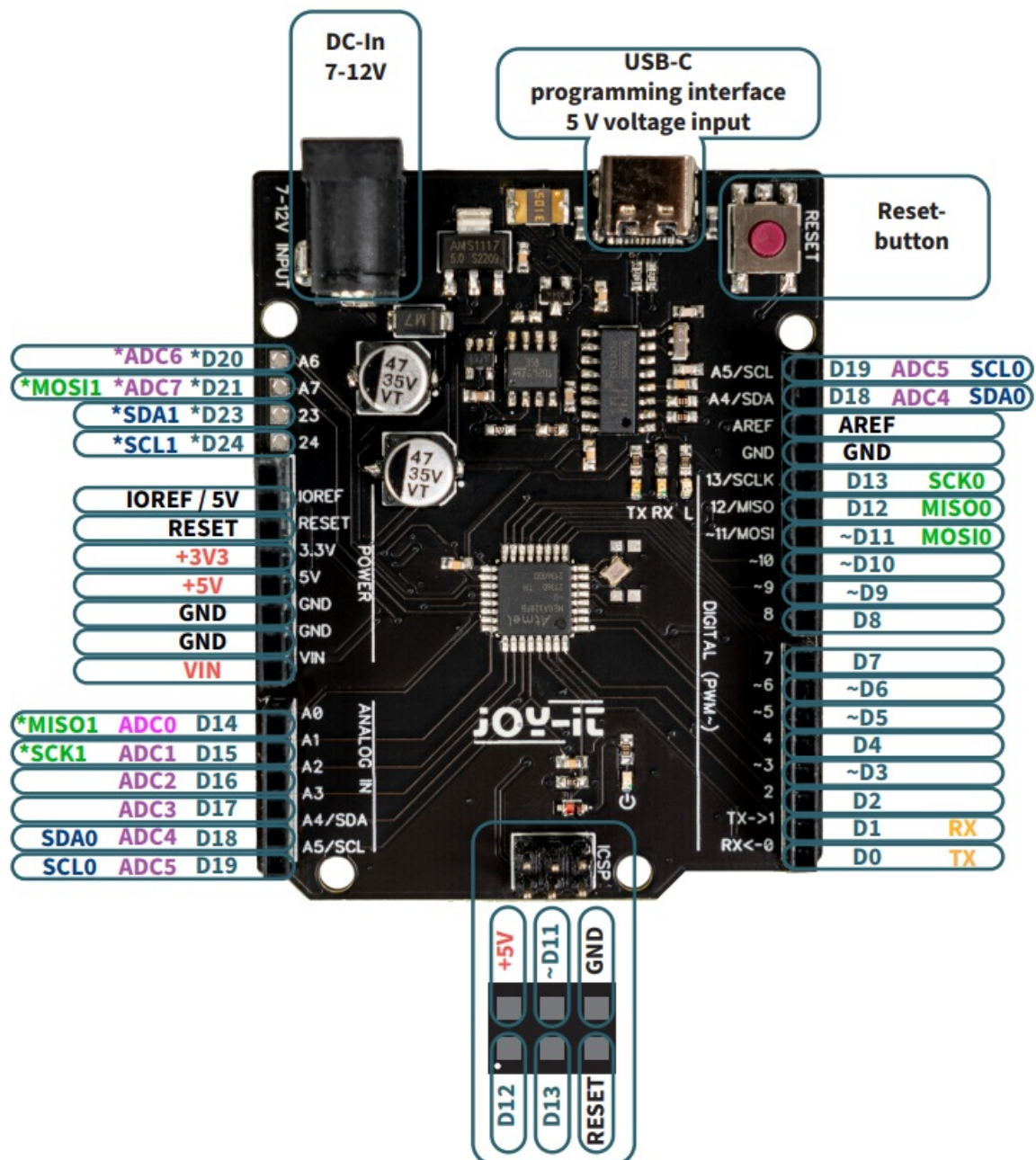
GENERAL INFORMATION

Dear customer,

thank you for purchasing our product. In the following, we will show you what you need to bear in mind when commissioning and using. Should you encounter any unexpected problems during use, please do not hesitate to contact us. The ARD-ONE-C board is the right microcontroller for beginners who want to get into the world of programming quickly and easily. Its ATmega328PB microcontroller offers you enough power for the implementation of your ideas and projects. It measures 68 x 53 mm and, with 14 digital inputs/outputs and 6 analog inputs, has many connection options. The ARD-ONE-C is fully Arduino UNO compatible.

- Please make sure that you use the appropriate manual for your specific board – either ARD-ONE-C or ARD-ONE-C-MC. Both boards are very similar, but require different configurations of the development environment. Using the wrong instructions will result in the board not working properly.

DEVICE OVERVIEW

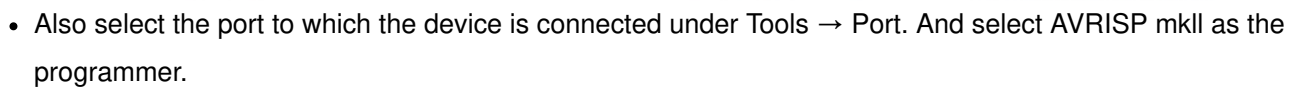


- PWM pins

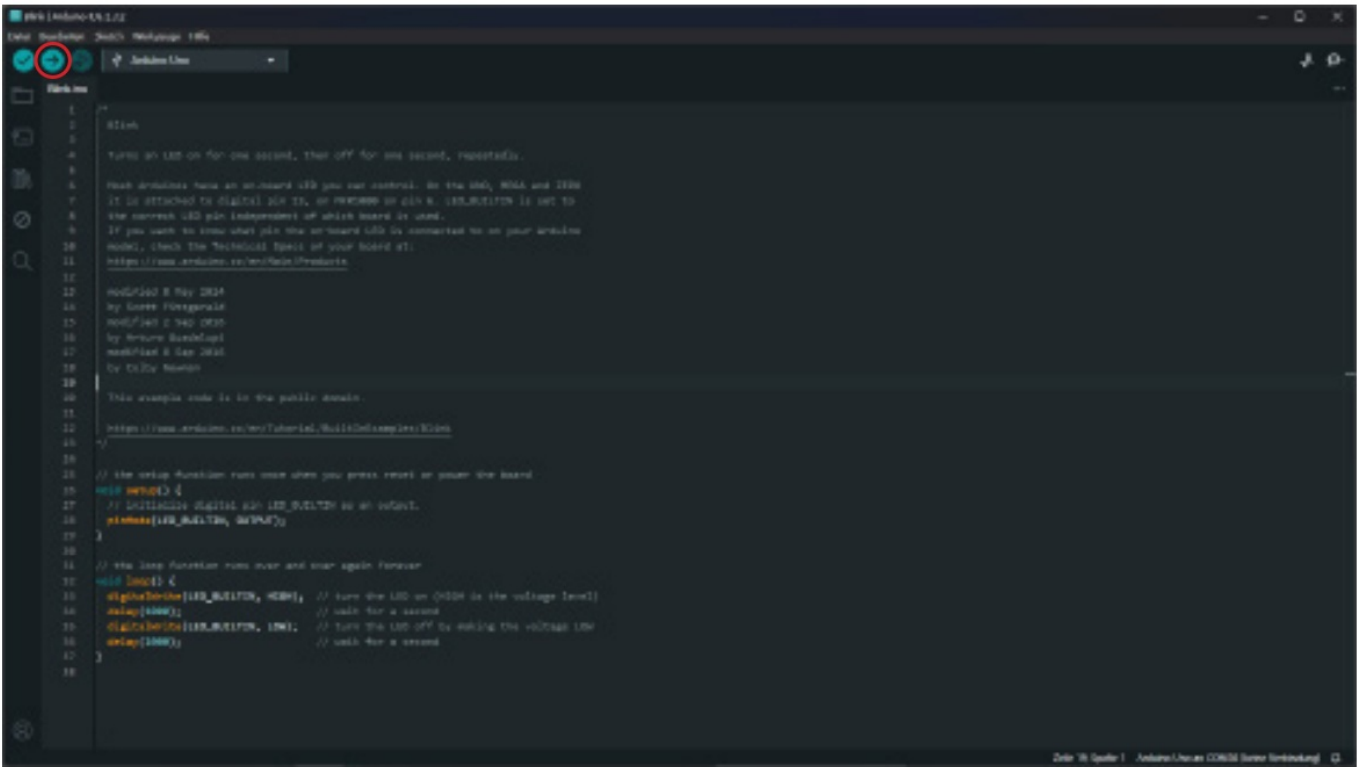
- Can only be used with Minicore bootloader (ARD-One-C-MC)

SOFTWARE SETUP

- The Arduino IDE is usually used to program the board.
- You can download it here: <https://www.arduino.cc/en/software>
- Once you have downloaded and installed the software, you can start it.
- Before you can load a sketch, you need to make a few settings for the board. Select Tools → Board → Arduino AVR Boards → Arduino UNO.



To test your configuration, you can run a simple code example on your ONEC. to do this, open the file under File → Examples → 01.Basics → Blink Now upload the example by clicking on Upload.



- This example code makes the LED on the board flash.

INFORMATION & TAKE-BACK OBLIGATIONS

Our information and take-back obligations under the German Electrical and Electronic Equipment Act (ElektroG)



■ Symbol on electrical and electronic equipment:

This crossed-out garbage can means that electrical and electronic appliances do not belong in household waste. You must hand in the old appliances at a collection point. Before handing them in, you must separate used batteries and accumulators that are not enclosed by the old appliance.

Return options:

As an end user, you can hand in your old appliance (which essentially fulfills the same function as the new appliance purchased from us) for disposal free of charge when purchasing a new appliance. Small appliances with no external dimensions greater than 25 cm can be disposed of in normal household quantities regardless of whether you have purchased a new appliance. Possibility of return at our company location during opening hours: SIMAC Electronics GmbH, Pascalstr. 8, D-47506 Neukirchen-Vluyn

Return option in your area:

We will send you a parcel stamp with which you can return the device to us free of charge. To do so, please contact us by e-mail at Service@joy-it.net or by telephone.


Packaging information:

Please pack your old appliance securely for transportation. If you do not have suitable packaging material or do not wish to use your own, please contact us and we will send you suitable packaging.





SUPPORT

- We are also there for you after your purchase. If you still have any questions or problems arise, we are also available by e-mail, telephone and ticket support system.
- E-Mail: service@joy-it.net
- Ticket-System: <https://support.joy-it.net>
- Phone: +49 (0)2845 9360 – 50
- For more information, please visit our website:
 - www.joy-it.net
- SIMAC Electronics GmbH
- Pascalstr. 8 47506 Neukirchen-Vluyn

Documents / Resources

	<p>JOY-it ARD-One-C Microcontroller Board [pdf] User Manual ARD-ONE-C-MC, ARD-One-C Microcontroller Board, ARD-One-C, Microcontroller Board, Board</p>
--	--

References

-  [ITnet | Servizi di Colocation e Cloud](#)
-  [For Makers and Professionals | Joy-IT](#)
-  [Joy-IT Helpdesk](#)
-  [Software | Arduino](#)
- [User Manual](#)

[Manuals+](#), [Privacy Policy](#)

This website is an independent publication and is neither affiliated with nor endorsed by any of the trademark owners. The "Bluetooth®" word mark and logos are registered trademarks owned by Bluetooth SIG, Inc. The "Wi-Fi®" word mark and logos are registered trademarks owned by the Wi-Fi Alliance. Any use of these marks on this website does not imply any affiliation with or endorsement.