



# Jojo T-3 Mobile Gaming Controller Instruction Manual

[Home](#) » [Jojo](#) » Jojo T-3 Mobile Gaming Controller Instruction Manual 





Gamepad Update Tutorial for Compatibility  
with PS Remote Play

### Contents

- 1 T-3 Mobile Gaming Controller
- 2 How to Connect to PS Remote Play after Upgrade
- 3 Documents / Resources
  - 3.1 References

## T-3 Mobile Gaming Controller

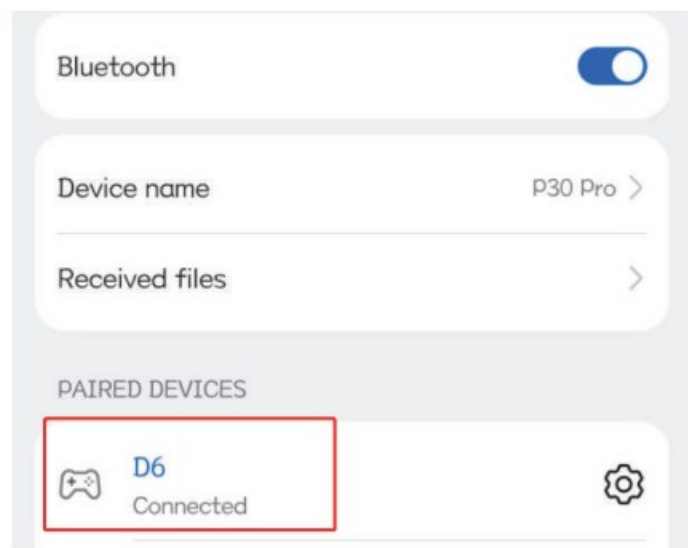
**Step 1:** Please scan the QR code with your Android phone for downloading ‘ShootingPlus V3’ App. (Only Android phone compatibility with this App.)


	
ShootingPlus V3	Scan for downloading API <a href="https://qixiongfiles.cn/app/download">https://qixiongfiles.cn/app/download</a>

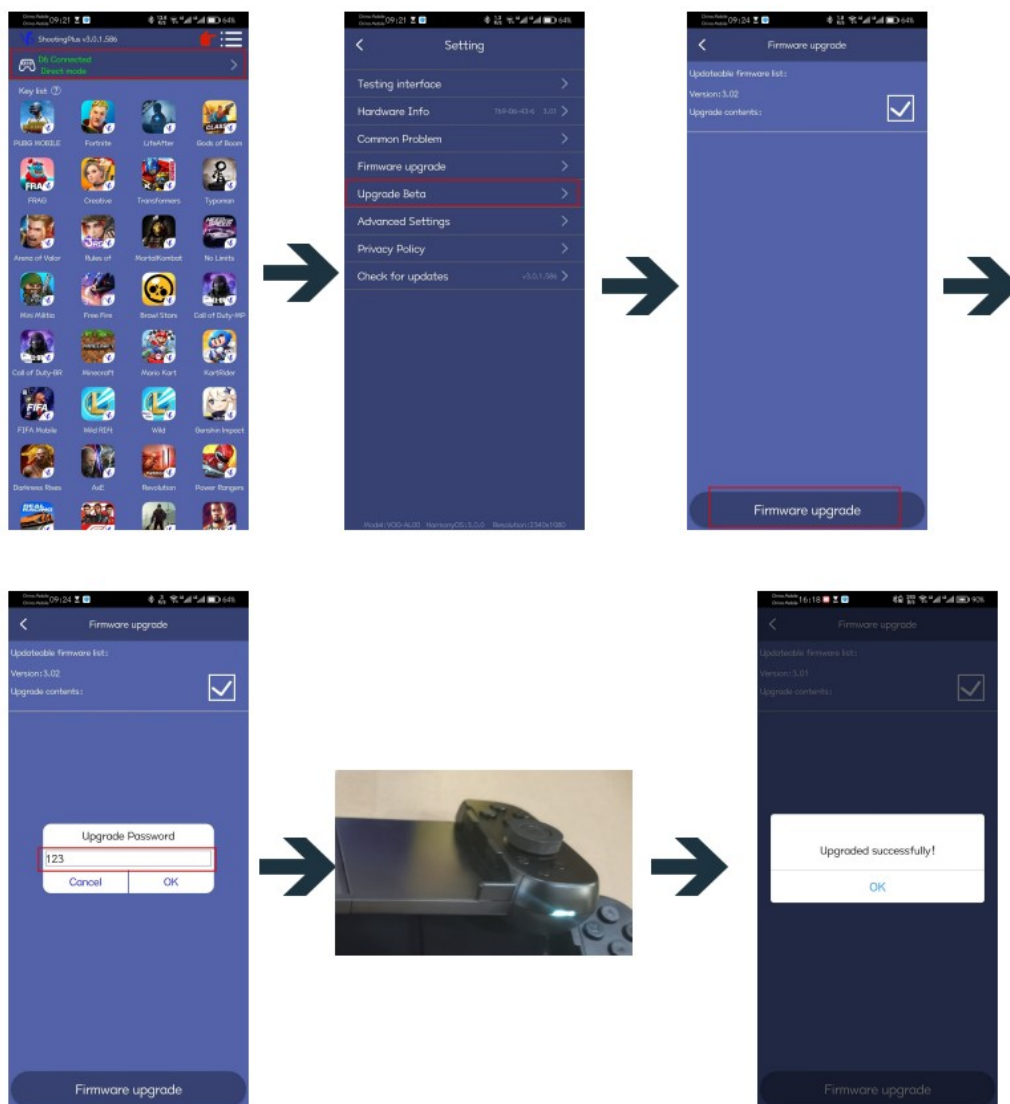
**Step 2:** In the controller off state, press ‘V3’ key to boot the controller, and the Blue indicator light will flashes.



**Step 3:** Turn on Bluetooth function on your Android phone, search and select 'D6', once the connection has done, the Blue indicator light will keep on.



**Step 4:** Open 'ShootingPlus V3' App, the controller will automatically connect to the D6 controller, make sure 'D6 Connected', tap  to 'Setting', then tap 'Upgrade Beta' into 'Firmware upgrade', tap 'Firmware upgrade' on the bottom, enter password '123' then tap 'OK' to enter the upgrade process, the indicator on the controller is 'cyan' and keeps on. After the upgrade is completed, the indicator goes off.



## How to Connect to PS Remote Play after Upgrade

### PS Streaming Connection – PS Remote Play

- ① PS remote play APP only compatible with PS4/PS5 console.
- ② Make sure your Sony login account on the PS remote play APP is the same as on your PS4/PS5 console.
- ③ Make sure controller is off, hold down 'L3' key, then press 'Bluetooth' key for 5 sec to boot controller until the 'purple' indicator light flashes quickly.
- ④ On iPhone: Search and select Bluetooth 'DUALSHOCK 4 Wireless Controller', once the connection has done, the indicator light will keep on.  
On Android: Search and select Bluetooth 'Wireless Controller', once the connection has done, the indicator light will keep on.
- ⑤ Let's go to PS4/PS5 console setting.

### FOR PS4

**Step 1:** On PS4 go to 'Settings – Account Management – Activate as Your Primary PS4'.

**Step 2:** On PS4 go to 'Settings – Remote Play Connection Settings – Turn on: Enable Remote Play'.

**Step 3:** On PS4 go to 'Settings – Power Save Settings – Set Features Available in Rest Mode – Turn on Stay Connected to the Internet – Turn on: Enable Turning On PS4 from Network'.

**Step 4:** Open the PS remote play APP on your mobile or tablet.

1. Click 'Start'.
2. Sign in a Sony login account that is the same as your PS4/5 console.

3. Option 1: Choose 'PS4'.

Option 2: Choose 'Other Connections' – Click 'Link Manually'. Then on your PS console, select 'Settings – Remote Play Connection Settings – Register Device' and then enter the number in the following field.

4. Waiting for the connection done. Once connected, you can use our controller to control your PS4 console.

## PS Streaming Connection 2 – PS Remote Play

### FOR PS5

**Step 1:** On PS5 go to 'Settings – Users and Accounts – Other – Enable: Console Sharing and Offline Play'.

**Step 2:** On PS5 go to 'Settings – System – Remote Play – Turn on: Enable Remote Play'.

**Step 3:** On PS5 go to 'Settings – System – Power Saving – Features Available in Rest Mode – Turn on: Stay Connected to the Internet – Turn on: Enable Turning On PS5 from Network'.

**Step 4:** On PS5 go to 'Home Screen – Choose Power – Select: Enter Rest Mode'.

**Step 5:** Open the PS remote play APP on your mobile or tablet.

1. Click 'Start'.

2. Sign in a Sony login account that is the same as your PS4/5 console.


3. Option 1: Choose 'PS5'.

Option 2: Choose 'Other Connections' – Click 'Link Manually'. Then on your PS console, select 'Settings – Remote Play Connection Settings – Register Device' and then enter the number in the following field.

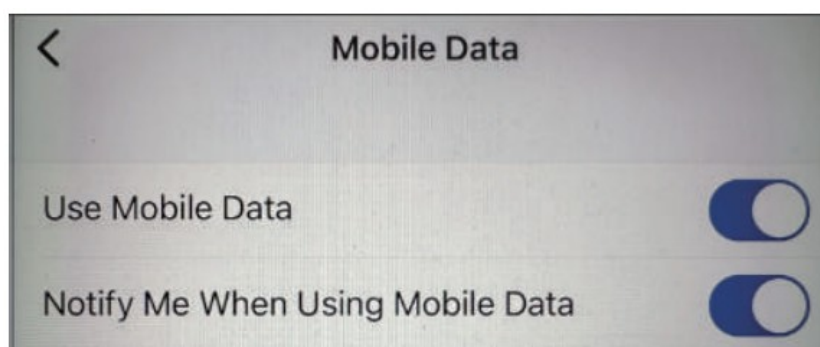
4. Waiting for the connection done. Once connected, you can use our controller to control your PS5 console.

## IMPORTANT TIPS FOR PS4/PS5

If you wish to use a mobile network to connect with PS console:

1. In PS remote play APP, tap settings symbol  on the top right corner.

2. Tap 'Mobile Data' and turn on 'Use Mobile Data'.





**[Joso T-3 Mobile Gaming Controller](#) [pdf] Instruction Manual**  
T-3 Mobile Gaming Controller, T-3, Mobile Gaming Controller, Gaming Controller, Controller

**References**

- [User Manual](#)

**[Manuals+.](#) [Privacy Policy](#)**

This website is an independent publication and is neither affiliated with nor endorsed by any of the trademark owners. The "Bluetooth®" word mark and logos are registered trademarks owned by Bluetooth SIG, Inc. The "Wi-Fi®" word mark and logos are registered trademarks owned by the Wi-Fi Alliance. Any use of these marks on this website does not imply any affiliation with or endorsement.