



JOOM RTI802 Bluetooth USB Adapter Installation Guide

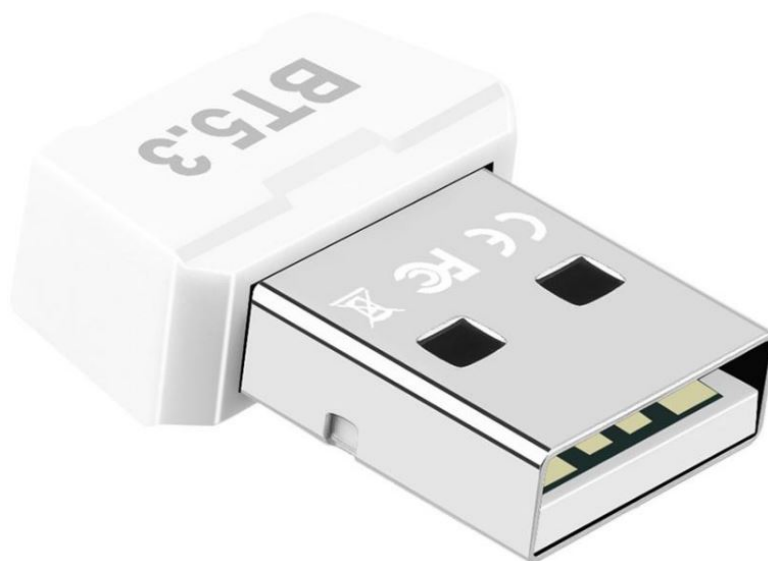
[Home](#) » [JOOM](#) » JOOM RTI802 Bluetooth USB Adapter Installation Guide 

Contents

- [1 JOOM RTI802 Bluetooth USB Adapter](#)
- [2 Product Information](#)
- [3 Product Usage Instructions](#)
- [4 Installation Guide](#)
 - [4.1 Part 1, Take Windows 10 as an Example](#)
 - [4.2 Part 2, Pair with Your Device via Bluetooth](#)
- [5 Documents / Resources](#)



JOOM RTI802 Bluetooth USB Adapter



Product Information

Product Name: Bluetooth USB Adapter

Installation Guide: Included

Compatible Operating System: Windows 10 (example given)

Package Contents: Bluetooth adapter, driver disk

Product Usage Instructions

Part 1: Installation

1. Connect the Bluetooth adapter to your computer.
2. Insert the driver disk included in the package into your computer's disk drive.
3. Double-click on the file named "Setup.exe" to start the installation process.

Part 2: Pairing with Your Device via Bluetooth

1. Locate the Bluetooth icon on the bottom right of your system's toolbar.
2. Right-click on the Bluetooth icon to open a menu.
3. Click on "Add a Bluetooth Device" from the menu.
4. Follow the on-screen instructions to pair your device with the Bluetooth adapter.

Please note the following precautions for optimal performance:

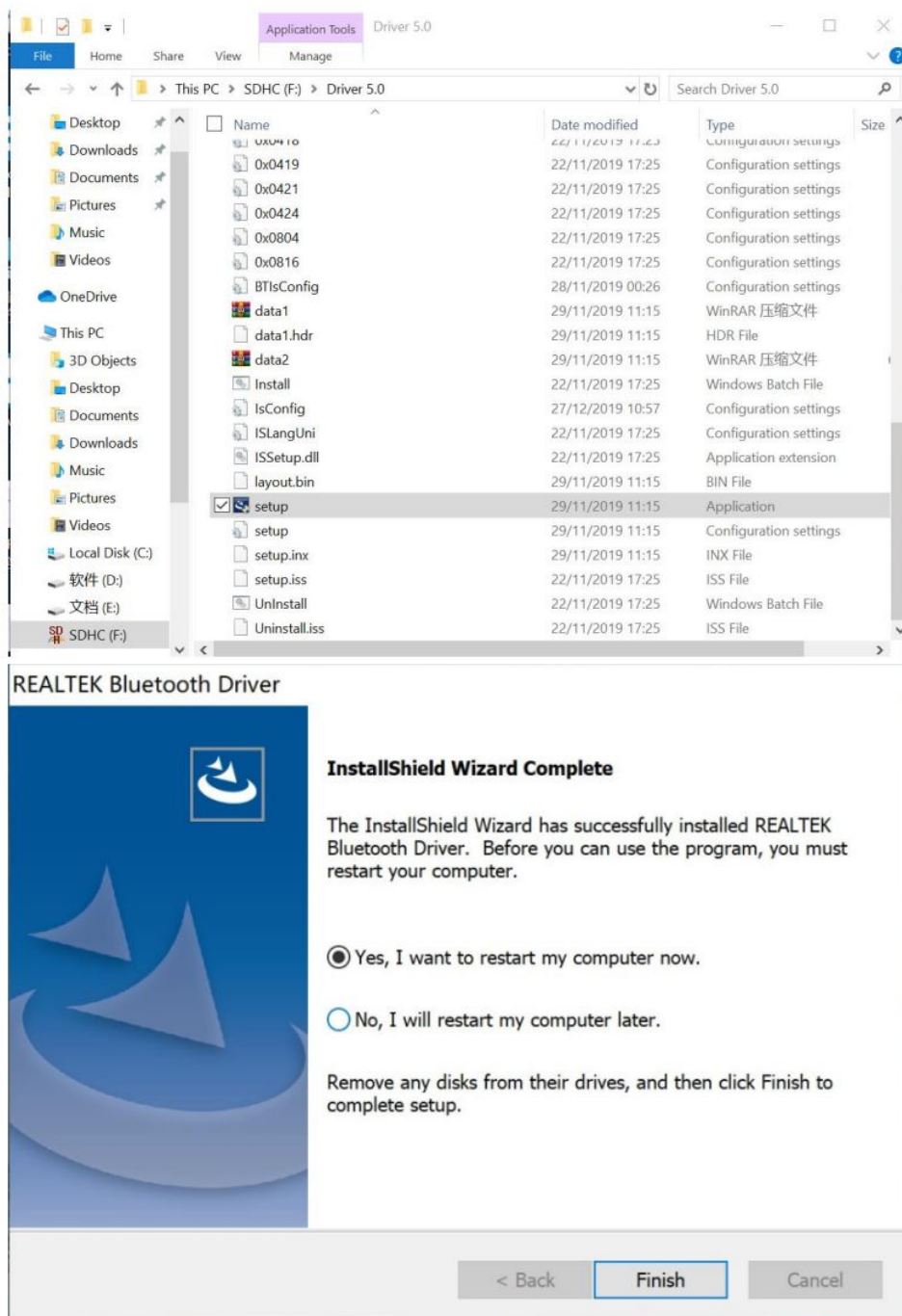
- Reorient or relocate the receiving antenna to improve signal reception.
- Increase the separation between the equipment and the receiver to reduce interference.
- Connect the equipment to an outlet on a circuit different from that to which the receiver is connected.
- If you experience difficulties, consult the dealer or an experienced radio/TV technician for assistance.

Note: Any changes or modifications not expressly approved by the responsible party for compliance may void the user's authority to operate the equipment.

Installation Guide

Part 1, Take Windows 10 as an Example

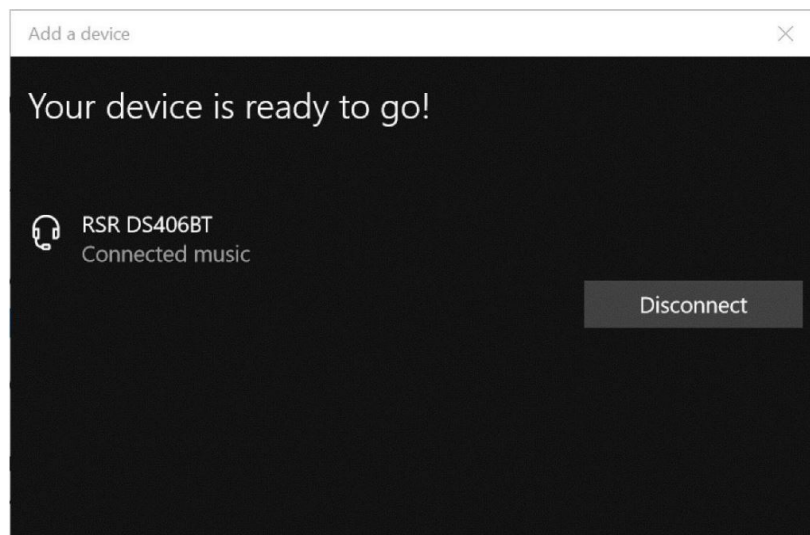
- Connect the Bluetooth adapter to the computer, insert our disk which contains a driver file, and double-click "Setup.exe" to start



Part 2, Pair with Your Device via Bluetooth

1. Select the Bluetooth icon on the bottom right of our system's toolbar, then right-click to pull out a man bar.
 - Click "Add a Bluetooth Device"





NOTE: This equipment has been tested and found to comply with the limits for a Class B digital device, pursuant to part 15 of the FCC Rules. These limits are designed to provide reasonable protection against harmful interference in a residential installation. This equipment generates, uses, and can radiate radio frequency energy and, if not installed and used in accordance with the instructions, may cause harmful interference to radio communications. However, there is no guarantee that interference will not occur in a particular installation. If this equipment does cause harmful interference to radio or television reception, which can be determined by turning the equipment off and on, the user is encouraged to try to correct the interference by one or more of the following measures:

- Reorient or relocate the receiving antenna.
- Increase the separation between the equipment and the receiver.
- Connect the equipment to an outlet on a circuit different from that to which the receiver is connected.
- Consult the dealer or an experienced radio/TV technician for help.

IMPORTANT: Changes or modifications not expressly approved by the party responsible for compliance could void the user's authority to operate the equipment.

Documents / Resources

	<p>JOOM RTI802 Bluetooth USB Adapter [pdf] Installation Guide 2AKC6-RTL802, 2AKC6RTL802, RTI802, RTI802 Bluetooth USB Adapter, Bluetooth USB Adapter, USB Adapter, Adapter</p>
---	--