



## JOOAN S3-U Smart Camera User Guide

[Home](#) » [JOOAN](#) » JOOAN S3-U Smart Camera User Guide 

### Contents

- [1 JOOAN S3-U Smart Camera](#)
- [2 Camera Introduction](#)
- [3 FCC Statement](#)
- [4 Sign up & Login](#)
- [5 WiFi connection](#)
- [6 Playback](#)
- [7 Bracket mounting](#)
- [8 Detection alarm settings](#)
- [9 How to use it correctly](#)
- [10 Frequently Asked Questions](#)
- [11 Documents / Resources](#)
  - [11.1 References](#)
- [12 Related Posts](#)



**JOOAN S3-U Smart Camera**



## Camera Introduction



### 1. Power on reset

Please insert the camera adopter, press and hold the reset button for 5 seconds to reset the camera until you hear "Di-", continue to wait for 'Di-' 2 times, the camera will complete the self-test



## FCC Statement

This device complies with part 15 of the FCC Rules. Operation is subject to the following two conditions.

1. This device may not cause harmful interference.
2. This device must accept any interference received, including interference that may cause undesired operation.

## Information to User

Note: This equipment has been tested and found to comply with the limits for a Class B digital device, pursuant to part 15 of the FCC Rules. These limits are designed to provide reasonable protection against harmful interference in a residential installation. This equipment generates, uses and can radiate radio frequency energy and, if not installed and used in accordance with the instructions, may cause harmful interference to radio communications. However, there is no guarantee that interference will not occur in a particular installation. If this equipment does cause harmful interference to radio or television reception, which can be determined by turning the equipment off and on, the user is encouraged to try to correct the interference by one or more of the following measures:

- Reorient or relocate the receiving antenna.
- Increase the separation between the equipment and receiver.
- Connect the equipment into an outlet on a circuit different from that to which the receiver is connected.
- Consult the dealer or an experienced radio/TV technician for help.

This equipment complies with FCC radiation exposure limits set forth for an uncontrolled environment. This equipment should be installed and operated with minimum distance 20cm between the radiator and your body.

**Important:** Change or modifications not expressly approved by the manufacturer responsible for compliance could void the user's authority to operate the equipment.



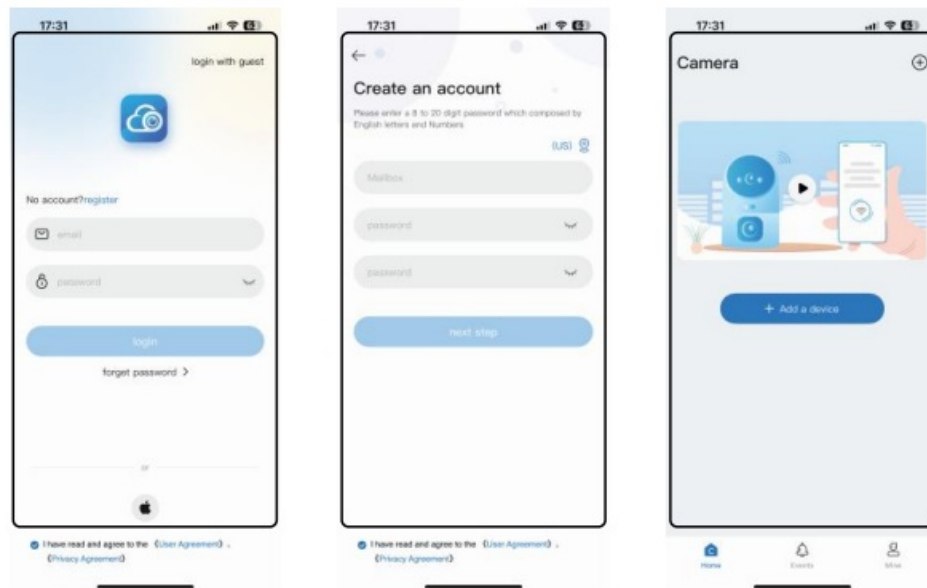
Download CAM720 APP from APP store or Google play, or by Scanning the QR code above.

## Sign up & Login

Register an account: Click “Register” > enter your email address, set your APP passcode, check the verification code, and wait for the verification to be completed and then jump directly to the

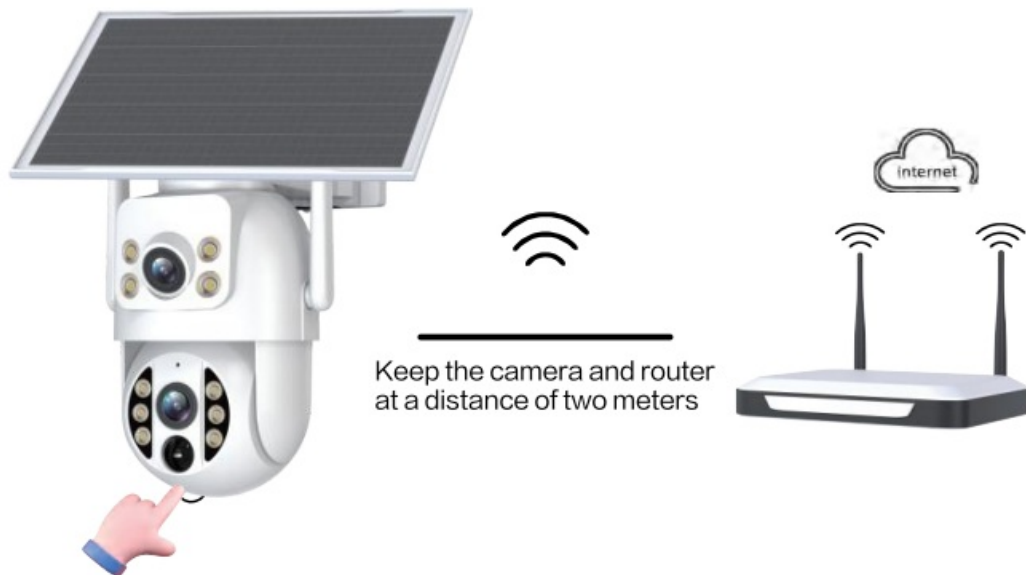
### APP list.

Note: if you don't won't register on account, it can't remote, but you can use stand-alone mode to view the camera. This mode only supports Local view.

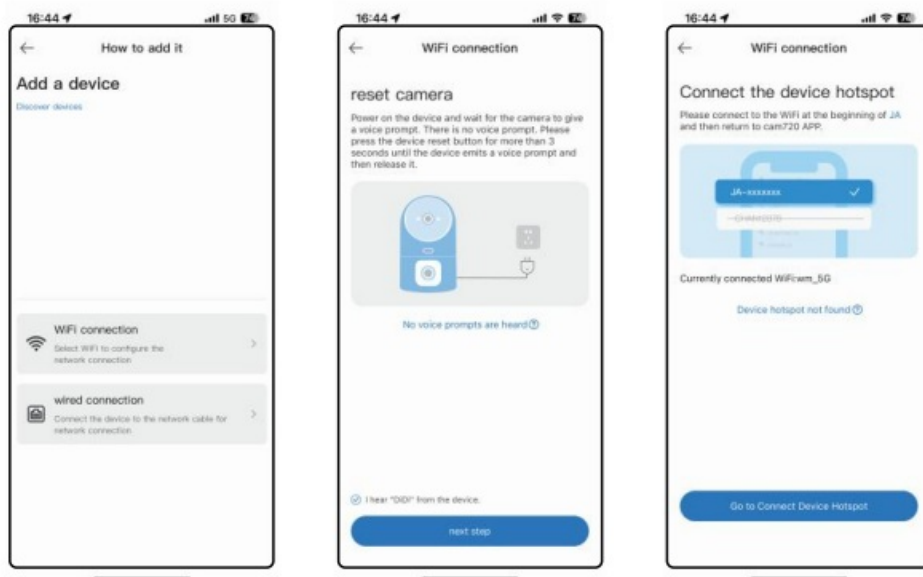


## WiFi connection

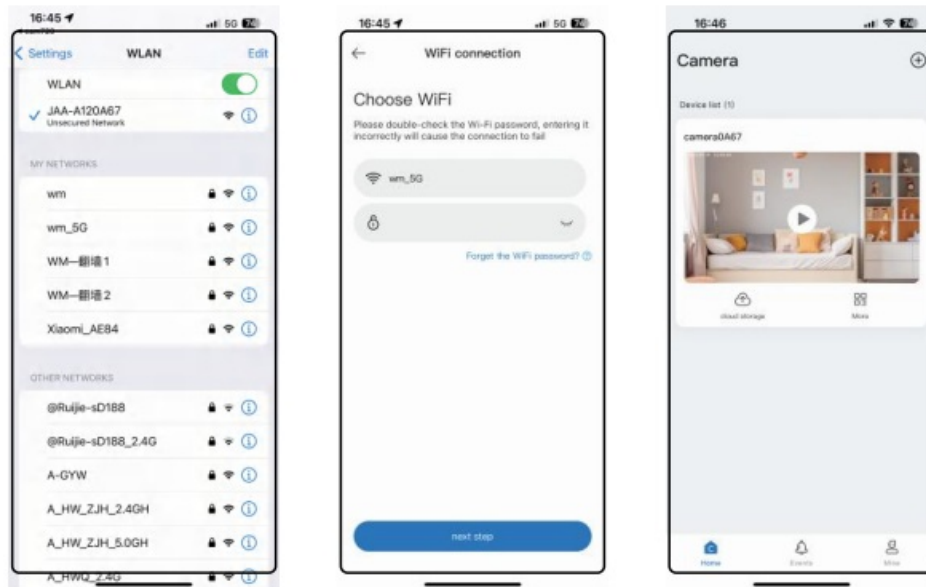
Please insert the camera adapter, press and hold the reset button for 5 seconds to reset the camera until you hear “Di-“, continue to wait for “Di-” 2 times, the camera will complete the self-test.



1. In the APP: click “+”> select “WiFi connection”.
2. Check “Hear the device announce did Click “Next”
3. Follow the prompts shown in the opp (please connect WiFi to JM-tt\*\* and go back to the Cam720 APP).



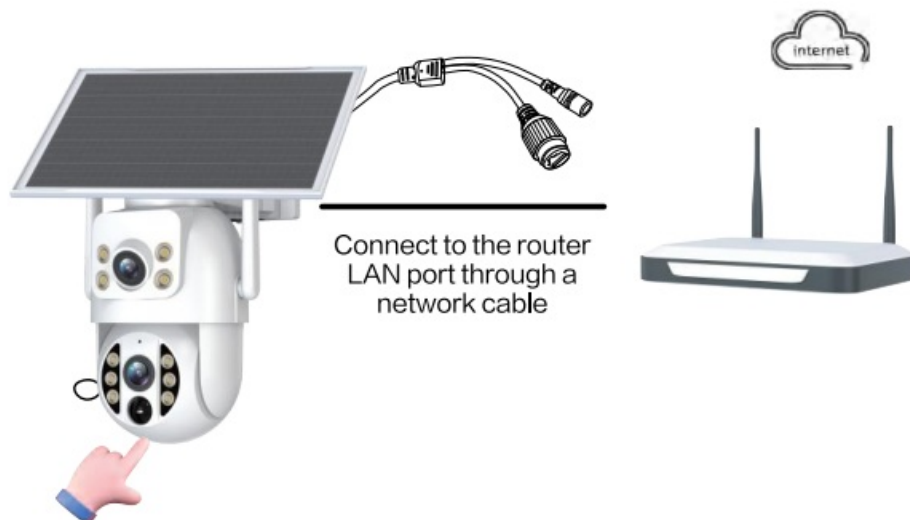
4. Enter the correct password for the WiFi connection of your phone and click “Next”.
5. When the device is connected, please wait patiently until camera is online, then click the video to view.



### Wired Connection

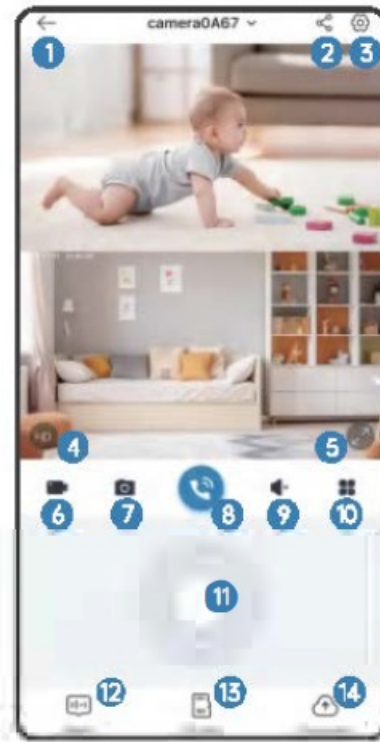
Plug the power supply and Ethernet cable to the router: Pis plug the adapter for the camera, and connect the camera with the Ethernet cable to the router. Reset the camera: Long-press the reset button about 5-8s until you hear it Prompted, select wired connection to connect it.

**NOTE:** Pis confirm the cellphone connected the same wifi of the router that camera connected. If the camera has a Network port, it supports wired/WiFi connection. otherwise, pis select wifi connection to connect.

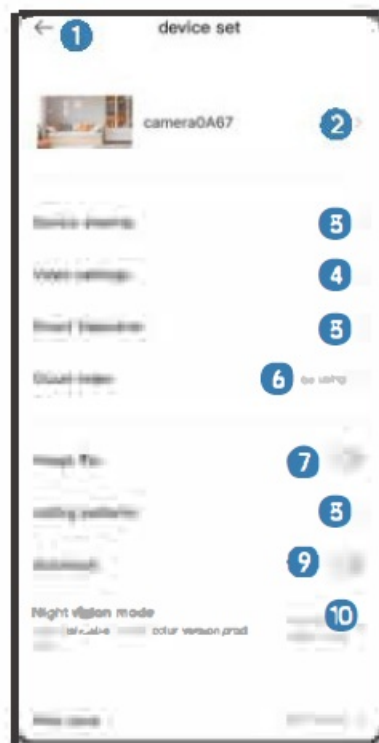


1. CD Return to the device list
2. Share the device
3. More function settings
4. Switch image effects
5. Switch into Full-screen image
6. Turn on screen record function
7. Screenshot to save the image
8. Turn on voice intercom
9. Turn on the microphone
10. More functions
11. PTZ rotation control

12. Message List
13. SD card Playback
14. Turn on cloud play



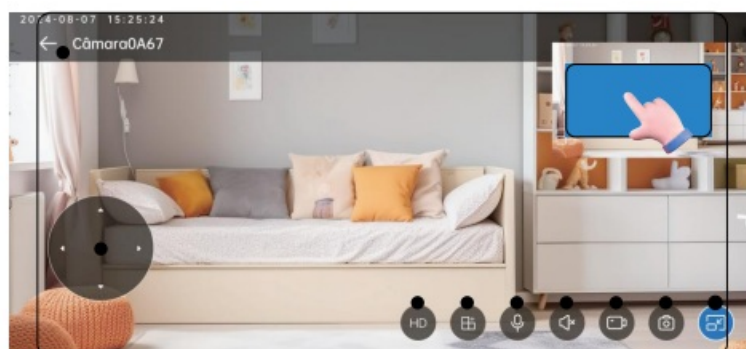
1. Add more cameras
2. Modify the device name
3. Start Live video
4. Subscribe Cloud storage
5. More functions set up
6. Message List
7. User information







1. Back to the device list
2. Modify the device name
3. Share equipment
4. SD card setup
5. Detection alarm settings
6. Buy cloud storage
7. Image Flip: upside down
8. Choose a call mode
9. Enable/Disable Auto tracking
10. Choose night vision mode
11. Set the time zone
12. Switch WF network
13. Camera information
14. Camera version number
15. Delete the camera
16. Transfer the camera to another account

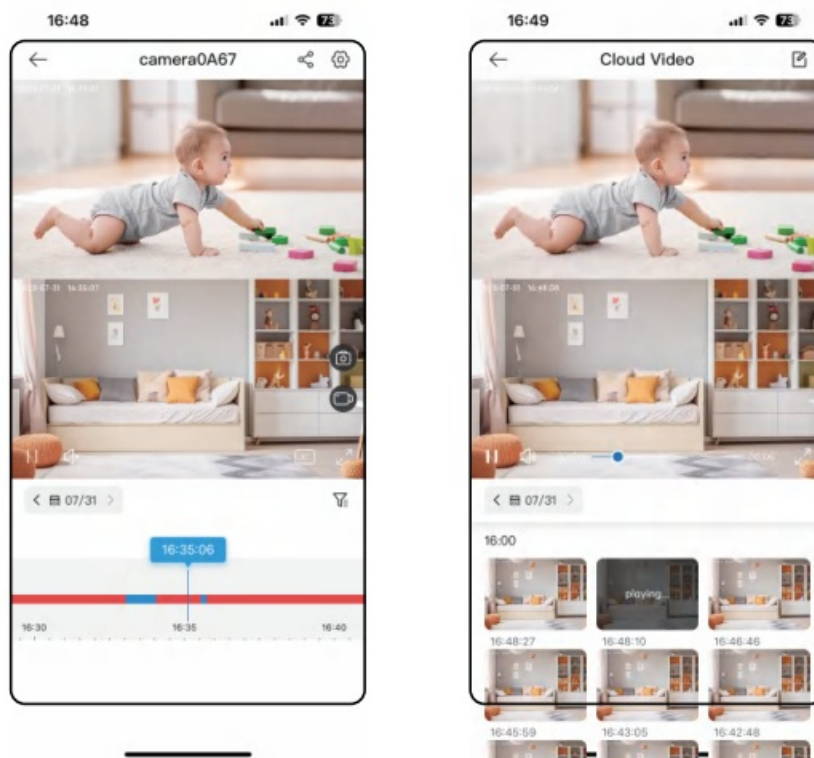


1. CIJ PTZ rotation control
2. Switch image effects
3. Four screens can be viewed at once
4. Turn on voice intercom
5. Turn on the microphone
6. Screen recording feature
7. Screenshot to save the image
8. Close the video window
9. Turn off full-screen images

Note; Tap the small screen 3 times in a row to switch the lens screen to each other.

## Playback

Turn on the playback function and two Record available: SD card record(8-256G) and Cloud Record. SD card record supports 3 record modes: 24/7 ous,motion-triggered, and scheduled record. method continuous record.



## Bracket mounting

### Installation procedure:

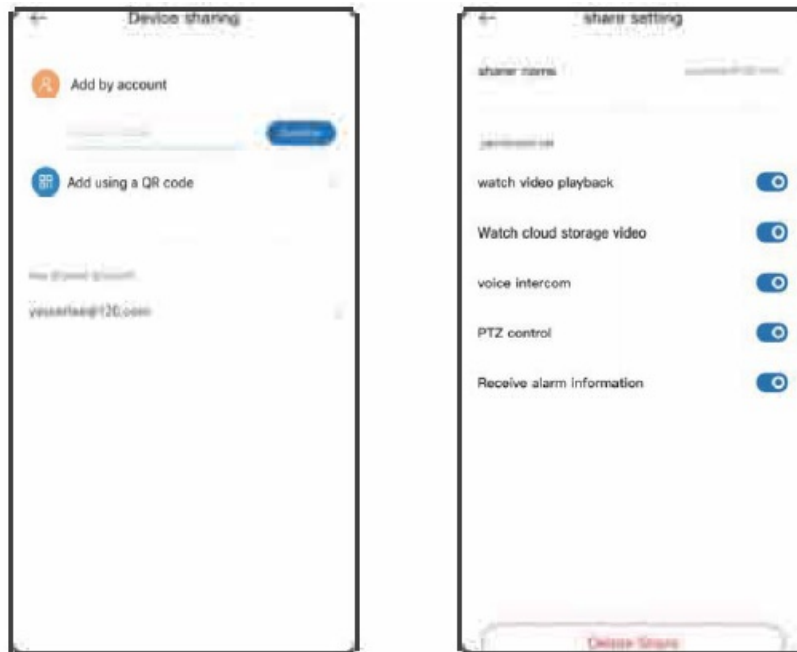
1. Keep bracket A in the same direction as the fixed lens, then bring the camera and bracket A together, and then turn bracket A to hold them both in place.
2. Put the other end of bracket A together with the slot of bracket B, and then just push it down
3. Attach the bracket B to the wall and make a mark on the hole to punch holes, and use a 6mm drill bit to get the holes. then Stuff the rubber stopper into the hole.

4. Select a suitable location and install expansion screws on the wall. for example, if it's a wooden wall, expansion screws are not required.
5. Align the bracket with the hole position and tighten the screws.

## Share

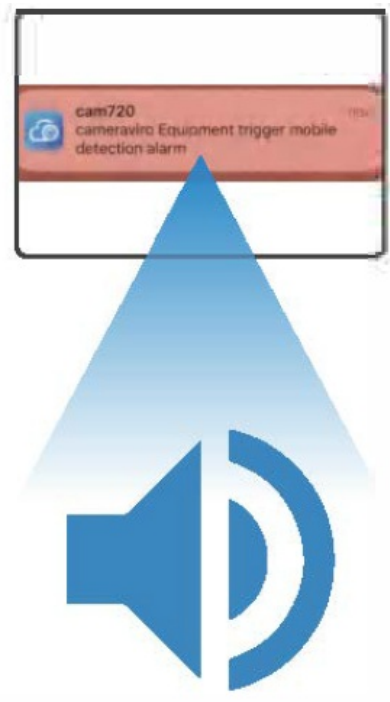
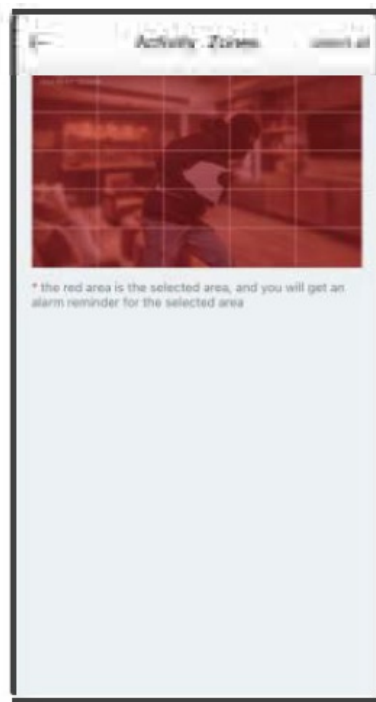
Share your camera with your friends and families

1. Your friend should have an account of the cam720 APP.
2. in main account, enter the Email of the friend APP account or scan the QR code of the account to share it.
3. Freely set the permission on this shared account.



## Detection alarm settings

1. Zoned area vigilance detection, the red part represents the planned warning area.
2. Warning information push, alarm information is pushed to the mobile phone in ti me through the APP background.
3. Sound alarm warns suspicious characters to leave as soon as possible, and supports custom voice.



## How to use it correctly

1. This product is suitable for indoor scenes, "not waterproof" please avoid outdoor installation.
2. It should be installed in a ventilated environment as much as possible to avoid unstable factors caused by long-term closed high-temperature replacement.
3. The camera and the router should be controlled within 10 meters of the partition wall, and the open environment should be kept within 20 meters.
4. When using at night, do not place items in front of the camera lens and do not face the wall, glass window, mirror, etc., so as not to block the reflection of infrared rays and affect the image quality.
5. The installation area should be away from high-power equipment to avoid signal interference and affect the use experience.

## After-sale Service & Tech Support

### Need some help?

- E-mail: [technicalreply@qacctv.com](mailto:technicalreply@qacctv.com) [market@qacctv.com](mailto:market@qacctv.com) for user guides, FAQs, warranty & more
- By scanning the QR code below to access Youtube, select right operation video for your camera according to APP and Model of the camera Or message seller to get the operation video directly.



## Frequently Asked Questions

### 1. What should I do If WIFI configuration fails?

A1: Make sure GPS Location service is on and “Allow” is selected for all opp permissions;

Check the WiFi password is entered correctly, no more than 31 digits, and letter case;

After all steps above completed, check router settings, such as: “blacklist”, “firewall”, “Device Internet restrictions”, etc.

### 2. HOW to do if the camera is offline always?


A2: Please check connection of the camera adapter and socket, or replace the power supply.

Check the wifi signal strength, make camera closer to router.

### 3. How could multiple users view at the same time?

A3: Please use share function to other users.

## Documents / Resources

	<b><a href="#">JOOAN S3-U Smart Camera</a></b> [pdf] User Guide 2BBQ4-S3-U, 2BBQ4S3U, S3-U Smart Camera, S3-U, Smart Camera, Camera
---	--

## References

- [User Manual](#)

### Manuals+, Privacy Policy

This website is an independent publication and is neither affiliated with nor endorsed by any of the trademark owners. The "Bluetooth®" word mark and logos are registered trademarks owned by Bluetooth SIG, Inc. The "Wi-Fi®" word mark and logos are registered trademarks owned by the Wi-Fi Alliance. Any use of these marks on this website does not imply any affiliation with or endorsement.