



JOOAN Q3RU Smart Camera User Guide

[Home](#) » [JOOAN](#) » JOOAN Q3RU Smart Camera User Guide 

JOOAN

Quick User Guide
Smart Camera

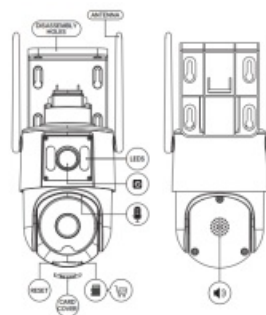
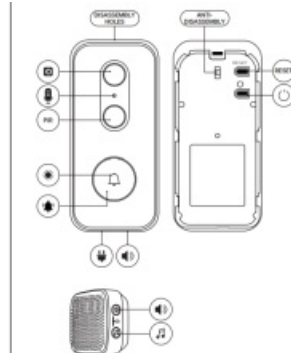
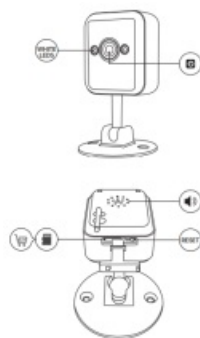
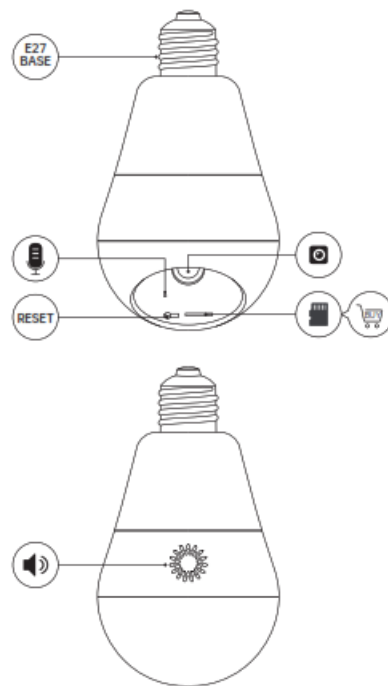
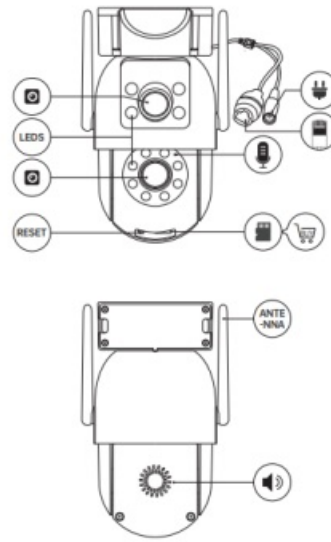
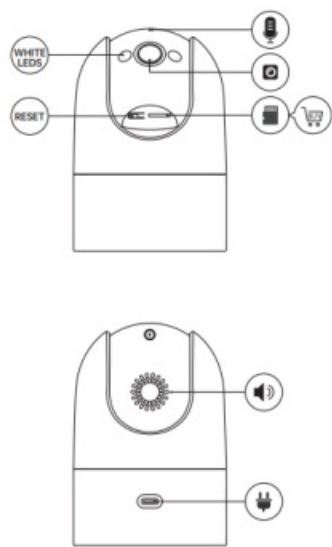


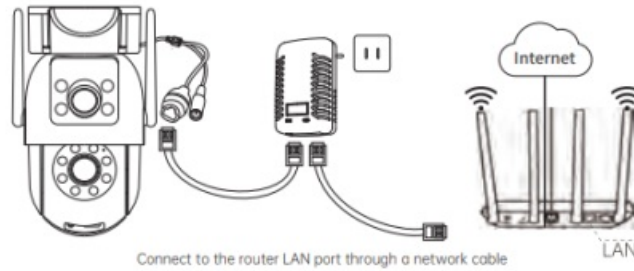
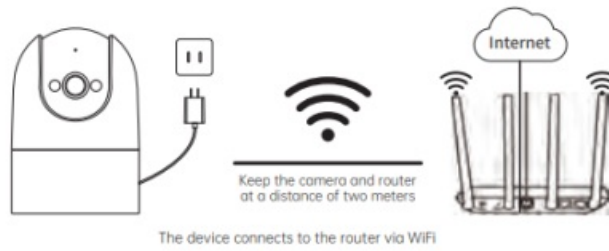
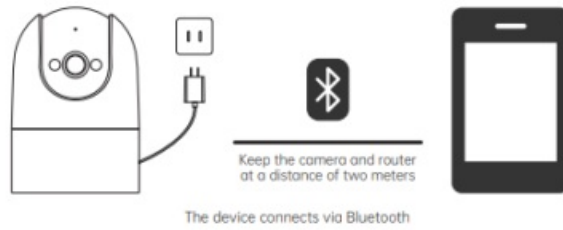
<https://use1upgrade.jooaniot.com/cam720/appdownloadpage.html>

Contents

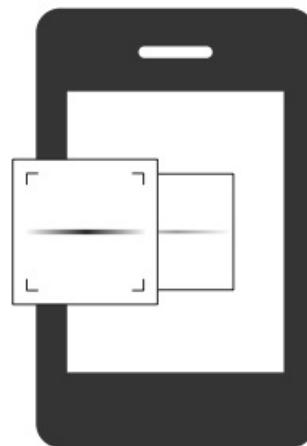
- 1 Q3RU Smart Camera
- 2 Sign up & Login
- 3 Bluetooth configuration
- 4 WiFi connection
- 5 Network cable connection
- 6 Documents / Resources
 - 6.1 References

Q3RU Smart Camera



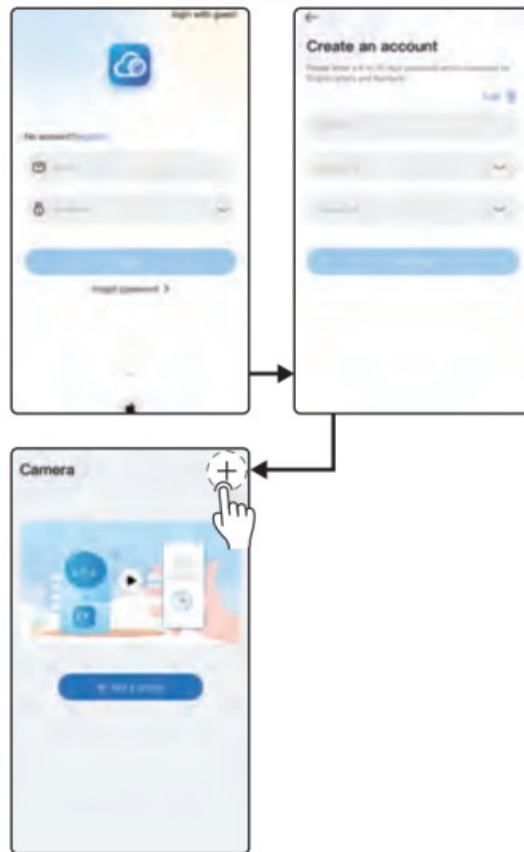


cam720 APP



<https://use1upgrade.jooaniot.com/cam720/appdownloadpage.html>

Sign up & Login



Bluetooth configuration

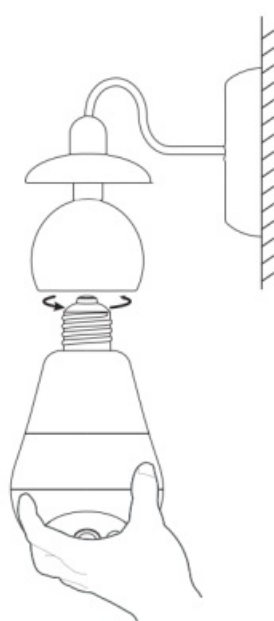
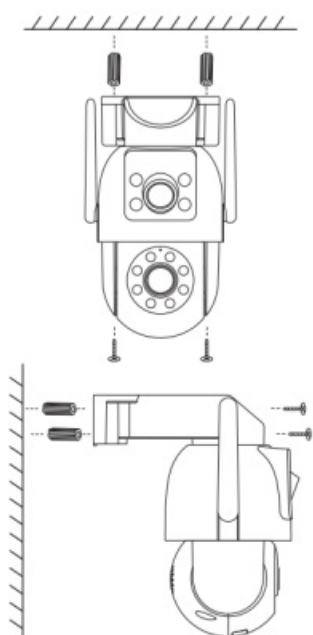
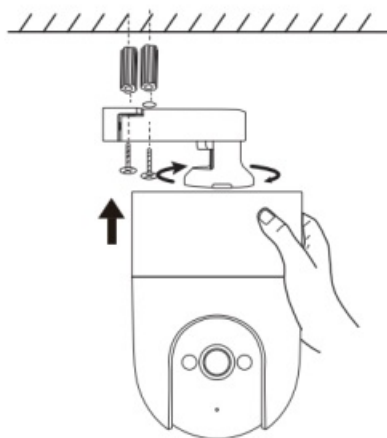
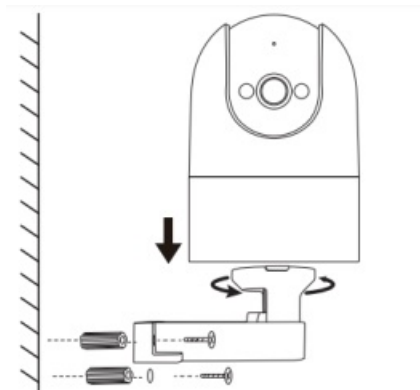


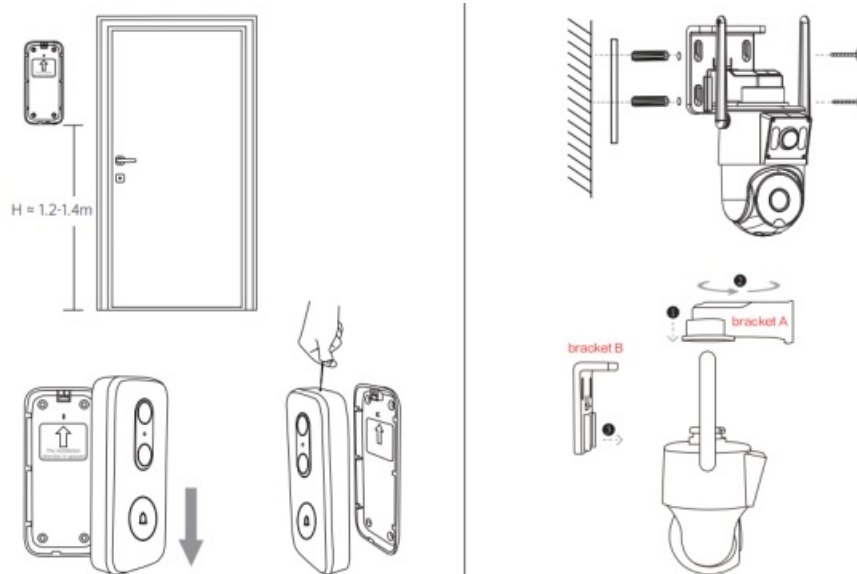
WiFi connection



Network cable connection







Power On the Camera

Power on the camera and bring it near your router.

Get the cam720 App

Scan the QR code in Part 1 or search for “Cam 720” to download and install the APP. Create an account and log in (See page 8).

Set up the camera

Open the app, select one of three different connection methods, Bluetooth connection is recommended, and follow the on-screen instructions to complete the setup (see pages 9 to 12).

Mount the camera

Make sure the mounting surface is strong enough to support three times the weight of the camera. For detailed installation procedures (see pages 13 to 15).

Important Use Notice

1. Offline/Cannot find hotspot/How to reset the camera?

Answer: Simple steps to reset the camera.

2. Cannot receive the verification code?

Answer: Please search in the spam box, or try to change an email address to register.

3. Network connection timeout/image abnormality?

Answer: Please restart the camera in the camera APP—settings page—camera parameters.

4. How to store recordings?

Answer: 1. Cloud storage (need to be purchased)

2. Micro SD card: supports 8GB-256GB storage capacity, Fat32 format.

This device complies with part 15 of the FCC Rules. Operation is subject to the following two conditions: (1) This device may not cause harmful interference, and (2) this device must accept any interference received, including interference that may cause undesired operation.

Any Changes or modifications not expressly approved by the party responsible for compliance could void the user's authority to operate the equipment.

Note: This equipment has been tested and found to comply with the limits for a Class B digital device, pursuant to part 15 of the FCC Rules. These limits are designed to provide reasonable protection against harmful interference in a residential installation.

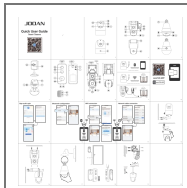
This equipment generates uses and can radiate radio frequency energy and, if not installed and used in accordance with the instructions, may cause harmful interference to radio communications. However, there is no guarantee that interference will not occur in a particular installation. If this equipment does cause harmful interference to radio or television reception, which can be determined by turning the equipment off and on, the user is encouraged to try to correct the interference by one or more of the following measures:

- Reorient or relocate the receiving antenna.
- Increase the separation between the equipment and receiver.
- Connect the equipment into an outlet on a circuit different from that to which the receiver is connected.
- Consult the dealer or an experienced radio/TV technician for help.

-This equipment complies with FCC radiation exposure limits set forth for an uncontrolled environment. This equipment should be installed and operated with minimum distance 20cm between the radiator & your body.

JOOAN

Documents / Resources



[JOOAN Q3RU Smart Camera](#) [pdf] User Guide
2BBQ4-Q3RU, 2BBQ4Q3RU, q3ru, Q3RU Smart Camera, Q3RU, Smart Camera, Camera

References

- [User Manual](#)

Manuals+ Privacy Policy

This website is an independent publication and is neither affiliated with nor endorsed by any of the trademark owners. The "Bluetooth®" word mark and logos are registered trademarks owned by Bluetooth SIG, Inc. The "Wi-Fi®" word mark and logos are registered trademarks owned by the Wi-Fi Alliance. Any use of these marks on this website does not imply any affiliation with or endorsement.