



Contents [[hide](#)]

[1 JOOAN CAM W10ZU Smart Camera](#)

[2 FEATURES](#)

[3 Product Usage Instructions](#)

[4 FCC Statement](#)

[5 FAQ](#)

[6 Documents / Resources](#)

[6.1 References](#)

JOOAN

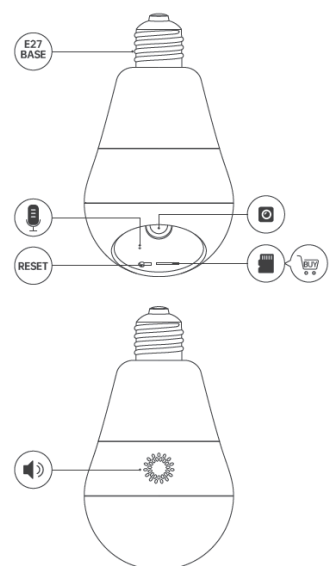
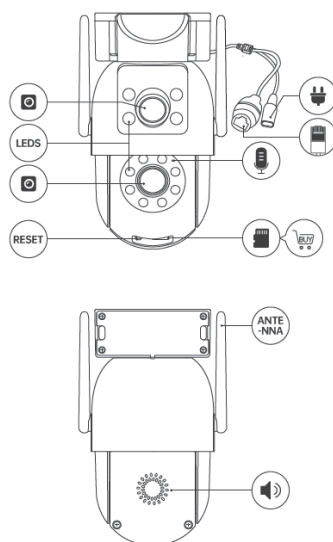
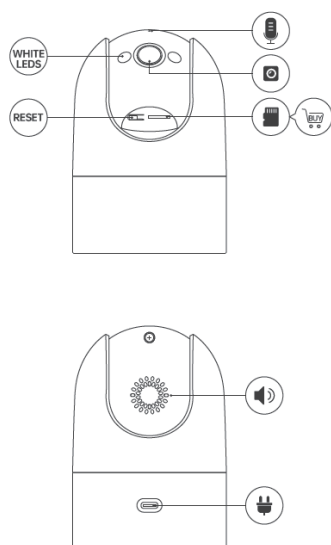
JOOAN CAM W10ZU Smart Camera

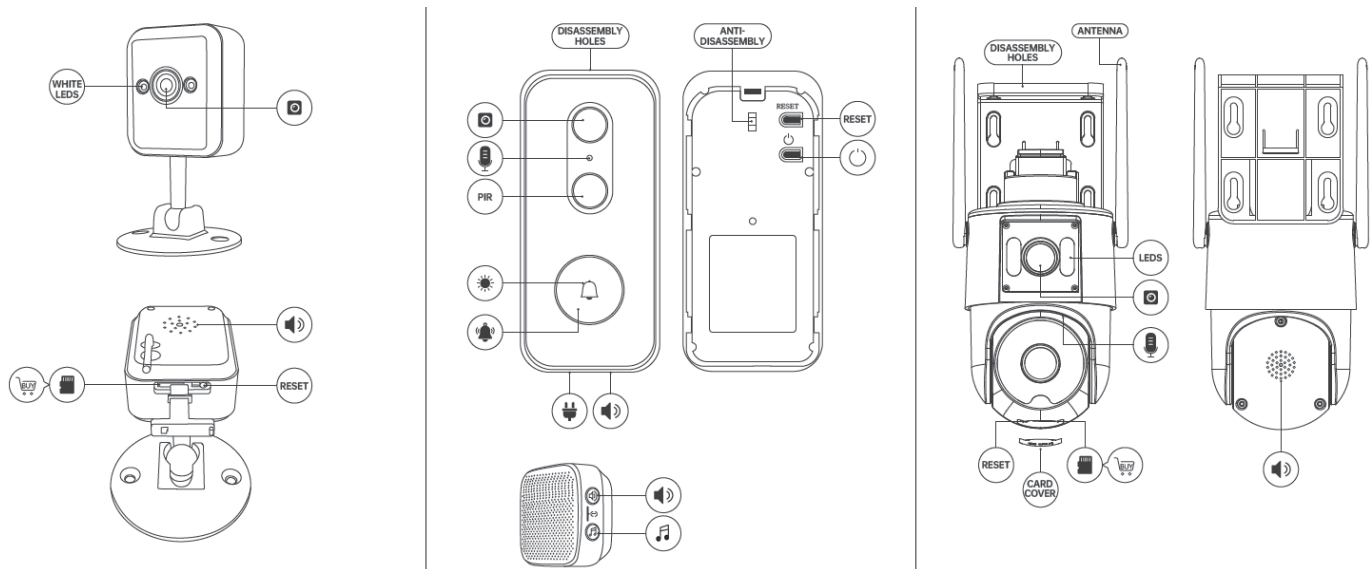


Specifications

- **Compliance:** FCC Part 15
- WiFi Connection
- **Supported Storage:** Micro SD card (8GB-256GB, FAT32 format)

FEATURES

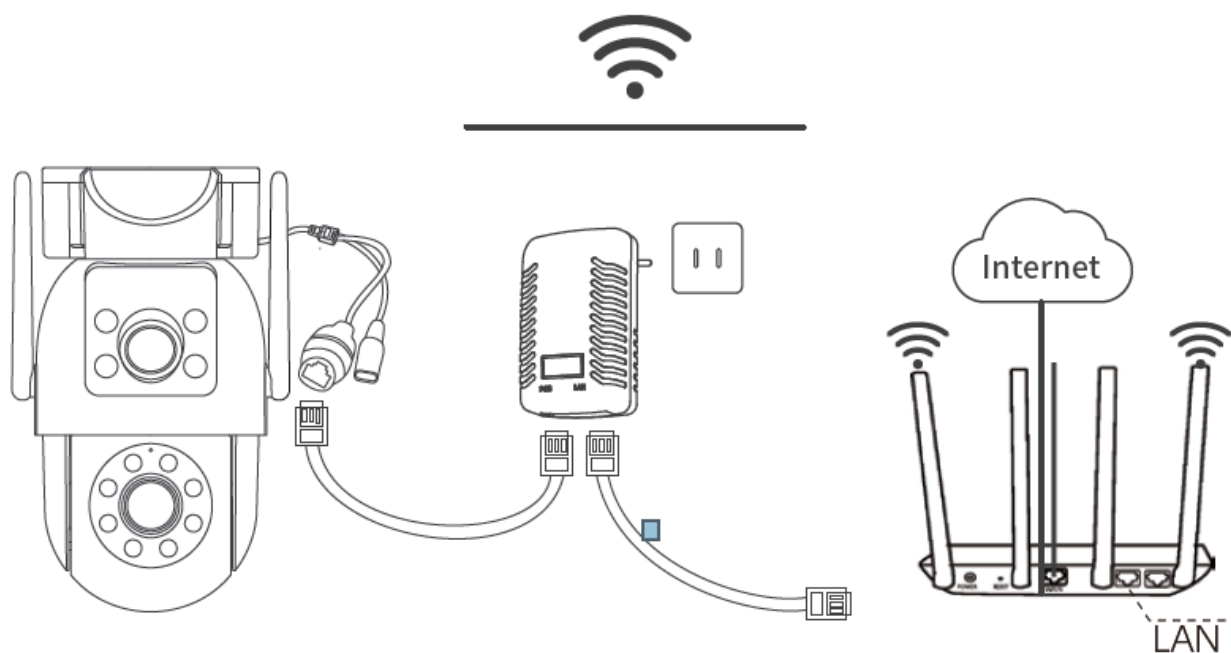




Product Usage Instructions

Power On the Camera

Power on the camera and bring it near your router



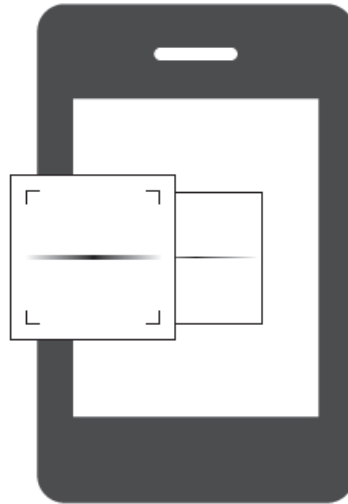
Connect to the router LAN port through a network cable

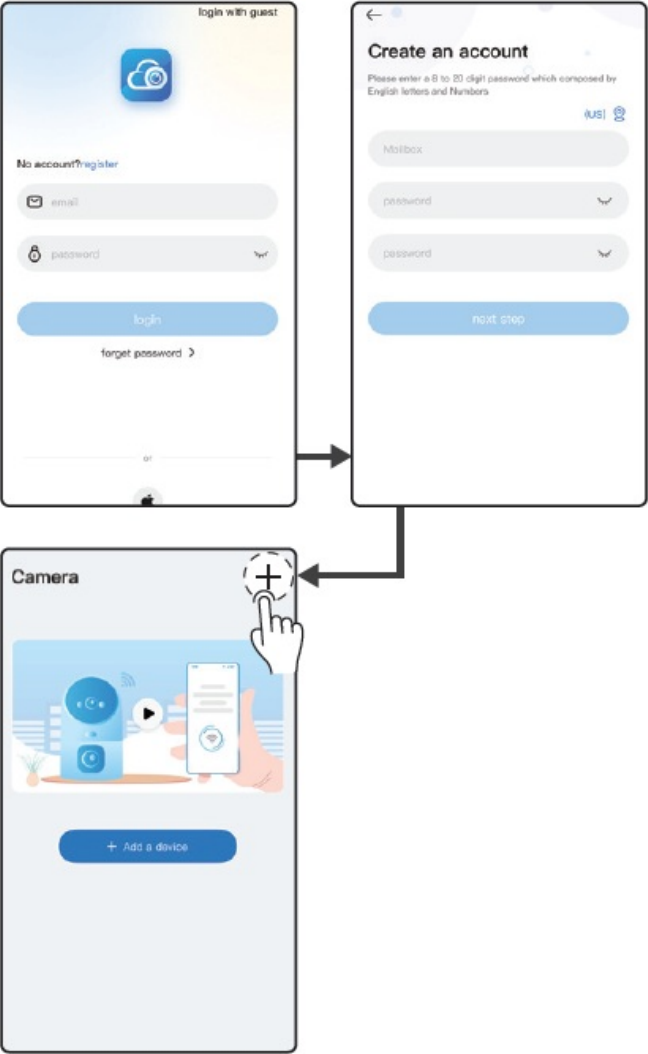
Get the cam720 App

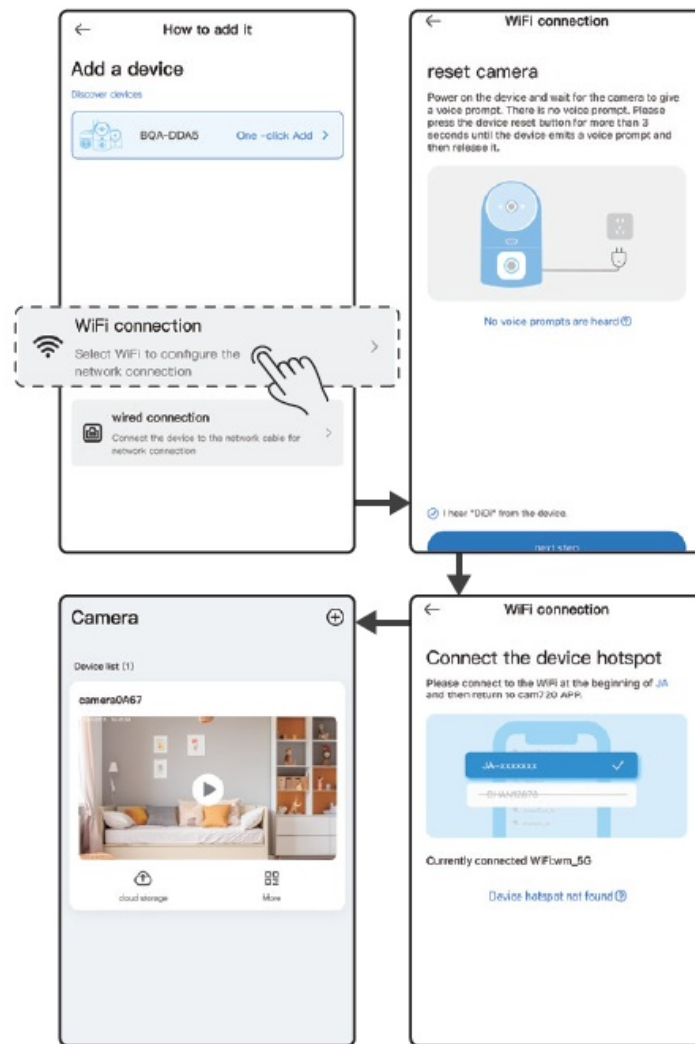
1. Scan the QR code or search for Cam 720 to download and install the APP.
2. Create an account and log in



cam720 APP

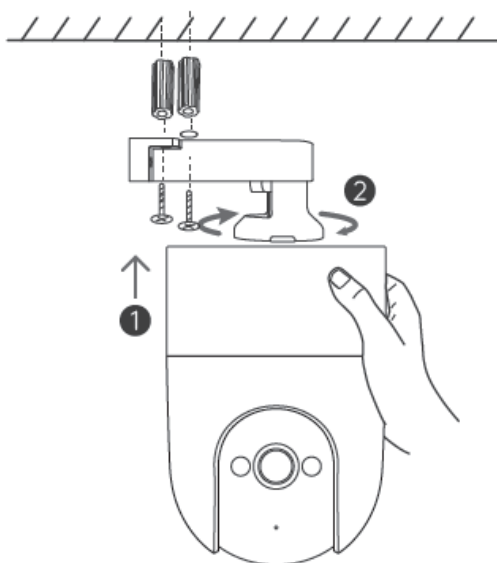
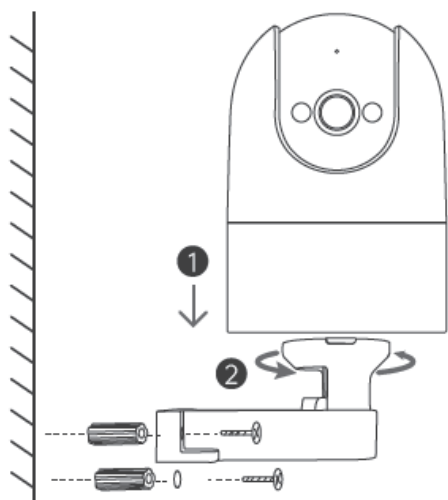


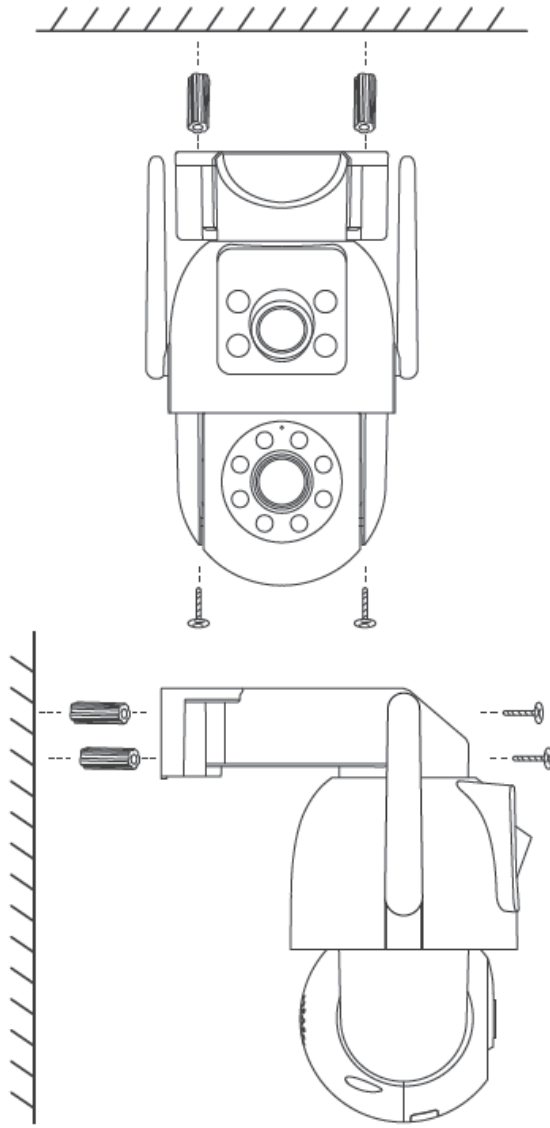


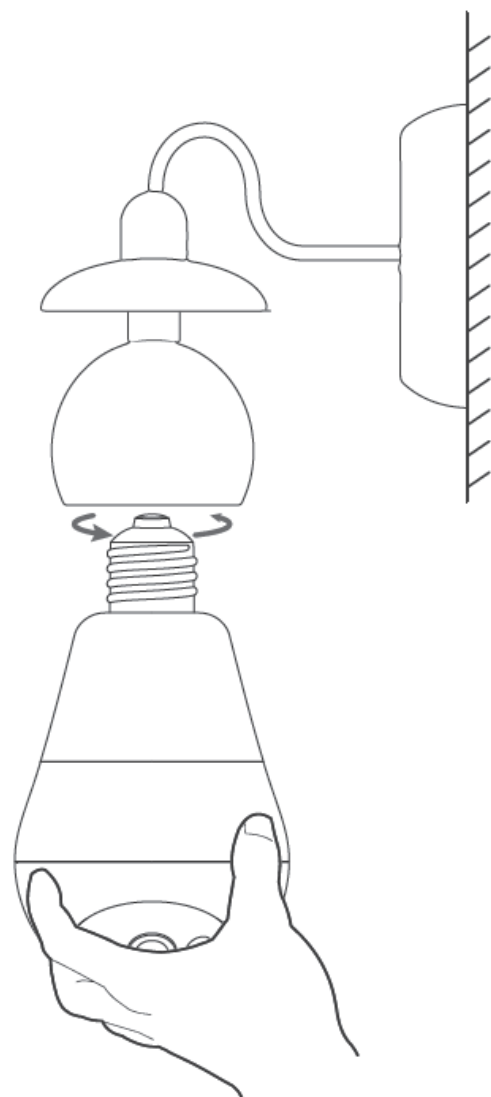


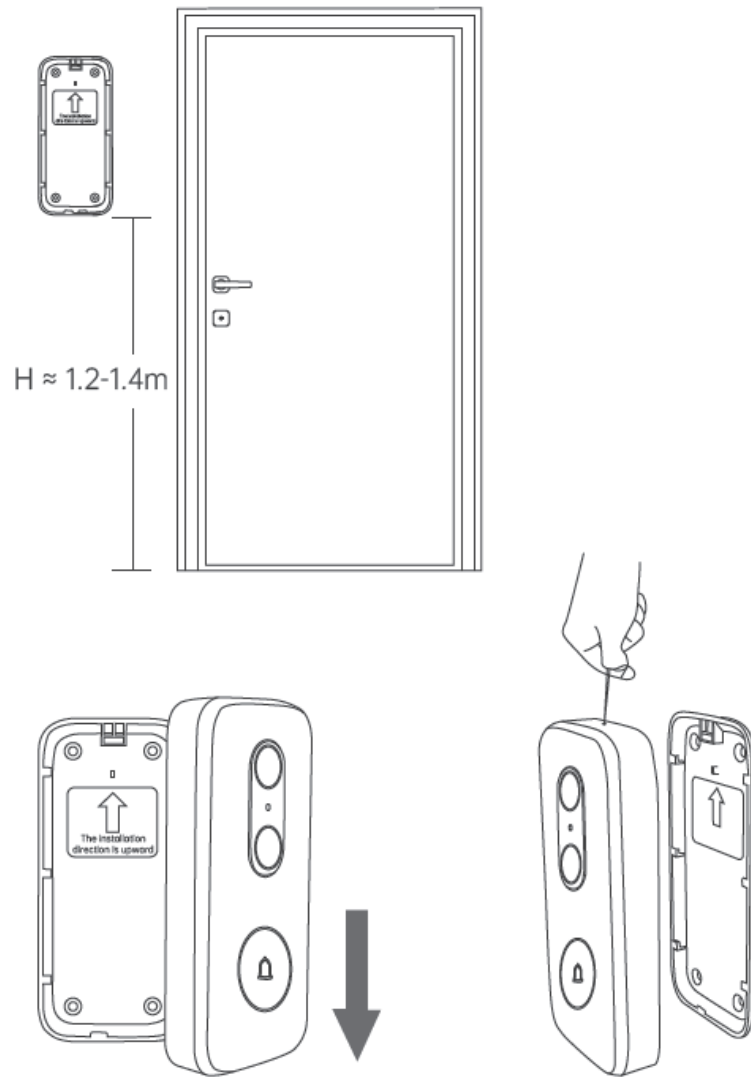
Set up the Camera

Open the app, select your WiFi connection, and follow the on-screen instructions to complete the setup.



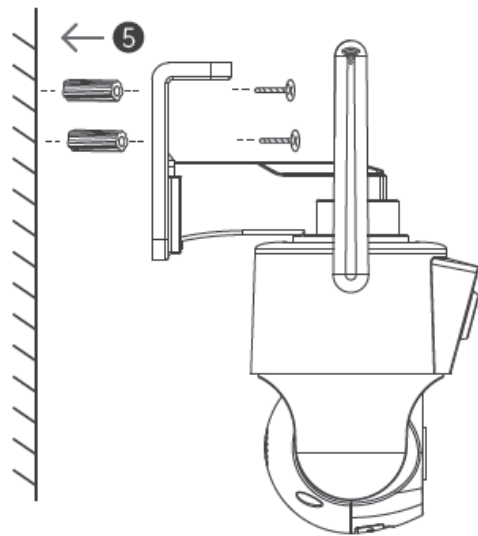
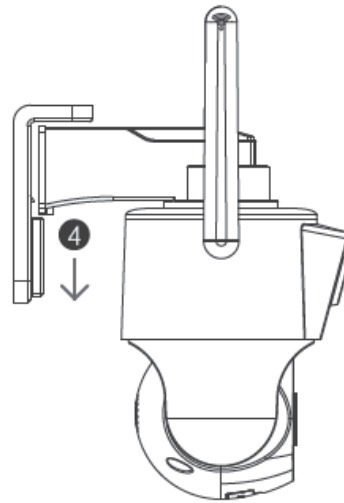
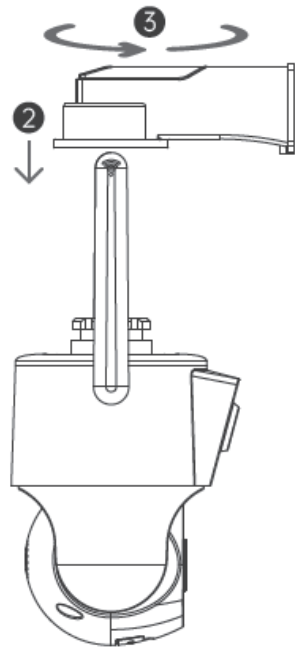
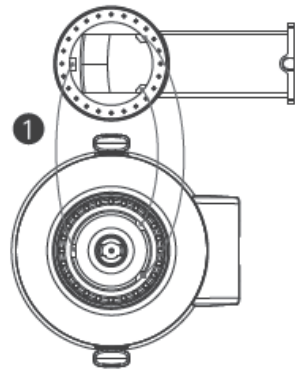


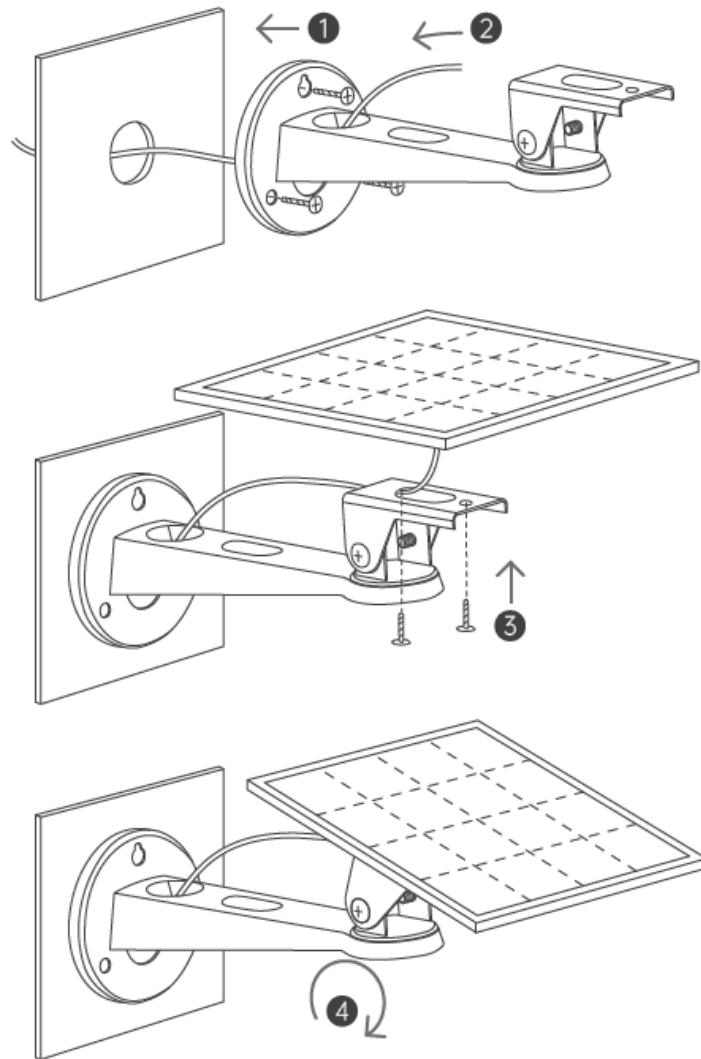




Mount the Camera

1. Ensure the mounting surface can support three times the weight of the camera.
2. For detailed installation procedures of the manual.





Important Use Notice

1. Offline/Cannot find hotspot/How to reset the camera?

Press and hold the reset button on the camera. After hearing a beep, try to reconnect to the camera.

2. Cannot receive the verification code?

Check the spam box or try using a different email address to register.

3. Network connection timeout/image abnormality?

Restart the camera in the camera APP settings page under camera parameters.

4. How to store recordings?

Use cloud storage (purchase required) or use a Micro SD card with a capacity between 8GB-256GB in FAT32 format.

FCC Statement

This device complies with part 15 of the FCC Rules.

Operation is subject to the following two conditions.

- This device may not cause harmful interference, and
- This device must accept any interference received including interference that may cause undesired operation.

Information to User

Note: This equipment has been tested and found to comply with the limits for a Class B digital device, pursuant to part 15 of the FCC Rules.

These limits are designed to provide reasonable protection against harmful interference in a residential installation. This equipment generates, uses and can radiate radio frequency energy and, if not installed and used in accordance with the instructions, may cause harmful interference to radio communications. However, there is no guarantee that interference will not occur in a particular installation. If this equipment does cause harmful interference to radio or television reception, which can be determined by turning the equipment off and on, the user is encouraged to try to correct the interference by one or more of the following measures:

- Reorient or relocate the receiving antenna.
- Increase the separation between the equipment and receiver.
- Connect the equipment into an outlet on a circuit different from that to which the receiver is connected.
- Consult the dealer or an experienced radio/TV technician for help.

Important: Change or modifications not expressly approved by the manufacturer responsible for compliance could void the user's authority to operate the equipment.

SCAN THE QR CODE



FAQ

Q: How do I reset the camera if I cannot find a hotspot?

A: Press and hold the reset button on the camera and attempt to reconnect after hearing a beep.

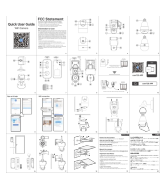
Q: What should I do in case of network connection timeouts or image abnormalities?

A: Restart the camera within the camera APP settings page under camera parameters.

Q: How can I store recordings from the camera?

A: You can either opt for cloud storage (requires purchase) or use a Micro SD card with a storage capacity between 8GB to 256GB in FAT32 format.

Documents / Resources

	JOOAN CAM W10ZU Smart Camera [pdf] User Guide 2BBQ4-W10ZU, 2BBQ4W10ZU, w10zu, W10ZU Smart Camera, W10ZU, Smart Camera, Camera
---	--

References

- [User Manual](#)

Leave a comment

Your email address will not be published. Required fields are marked *

Comment *

Name

Email

Website

☐ Save my name, email, and website in this browser for the next time I comment.

Post Comment

Search:

Search

[Manuals+](#) | [Upload](#) | [Deep Search](#) | [Privacy Policy](#) | [@manuals.plus](#) | [YouTube](#)

This website is an independent publication and is neither affiliated with nor endorsed by any of the trademark owners. The "Bluetooth®" word mark and logos are registered trademarks owned by Bluetooth SIG, Inc. The "Wi-Fi®" word mark and logos are registered trademarks owned by the Wi-Fi Alliance. Any use of these marks on this website does not imply any affiliation with or endorsement.