



Johnson Controls PGP945E Wired Input Door/Window Magnetic Contact Installation Guide

[Home](#) » [Johnson Controls](#) » Johnson Controls PGP945E Wired Input Door/Window Magnetic Contact Installation Guide 

*Johnson Controls PGP945E Wired Input Door/Window
Magnetic Contact Installation Guide*



PGP945E Wired Input Door/Window Magnetic Contact Installation Guide

Installation guidelines

The reference to PGP945E throughout this manual includes the model PGP9945E.

⚠ CAUTION: Only qualified personnel may install this equipment. Place this device in non-hazardous indoor locations only.

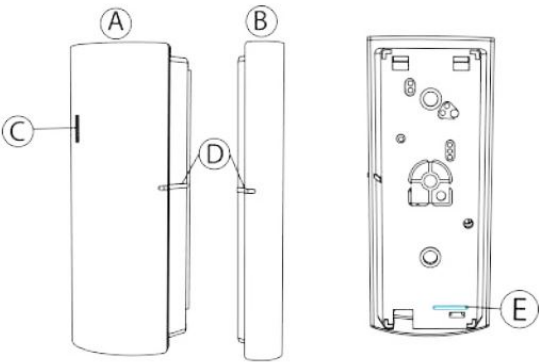
➤ Important: Check the device and the entire alarm system weekly to ensure optimal performance.

📄 Note: To comply with FCC and ISED Canada RF exposure compliance requirements, locate the device at a distance of at least 20 cm from all persons during normal operation.

Do not co-locate the antennas used for this product, or operate them in conjunction with any other antenna or transmitter.

Install the UL/ULC listed model PGP9945E in accordance with the Standard for Installation and Classification of Residential Burglar Alarm Systems, UL 1641 and ULC-S302.

Figure 1: PGP945E



Callout	Description
A	Device
B	Magnet
C	Transmission LED
D	Positioning marks
E	Battery pull-tab

Contents

- 1 [Enrolling the device](#)
- 2 [Configuring the device parameters](#)
- 3 [Mounting the device using tape](#)
- 4 [Mounting the device using screws](#)
- 5 [Replacing the battery](#)
- 6 [Wiring the auxiliary input](#)
- 7 [Wiring the auxiliary input in fullback mode](#)
- 8 [Directional magnet distances for event triggers](#)
- 9 [Local diagnostics test](#)
- 10 [Specifications](#)
- 11 [Compliance with standards](#)
- 12 [About PGP945E](#)
- 13 [Limited Warranty](#)
- 14 [EULA](#)
- 15 [Documents / Resources](#)
 - 15.1 [References](#)
- 16 [Related Posts](#)

Enrolling the device

1. Refer to the control panel installation manual for the complete set of enrolment instructions and testing procedures.
2. From the Installation menu, enter the Device enrolment menu and select the option to add a new device.
3. Remove the battery pull-tab to power on the device and begin the auto-enrollment process. If the battery pull-tab is not available or if the device does not automatically enrol, open the device cover to trigger the enrolment. Alternatively, press the enroll button until the yellow LED turns on. See Figure 4 G and H.
4. If requested, enter the PIN code printed on the device label.
5. To manually enrol the device:

- a. Scan the QR Code on the device box, using the IQ4 camera if available, or see step b. b. Manually enter the device ID, printed on the product label, in the format 102-XXXX.

Note: If the device has been powered up for more than 48 hours it will be identified by the system only after the device has been reset. The PGP945E is enrolled with device ID 102-XXXX. In fall back mode it enrolls as PGx945 with device ID 101-XXXX. Select the required zone.

6. Select the required zone
7. Configure any device parameters that are required.
8. Mount and test the device. See Local diagnostics test for information on testing the device.

Configuring the device parameters

1. Enter the DEVICE SETTINGS menu and select the required configuration as described in the following table:

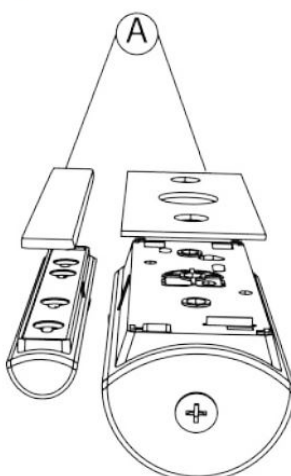
Table 1: Configuration options

Option	Action
Alarm LED	Define whether the alarm LED indication will be activated. Optional settings: LED ON (default) and LED OFF .
Reed Switch	Determine whether to enable or disable the internal reed switch. Optional settings: Enabled (default) or Disabled
Input#1	Define the external input according to the installer's requirements. Optional settings: Disabled (default), End Of Line, Normally Open or Normally Closed .

Mounting the device using tape

1. 1. Peel the release liners off the two strips of double-sided adhesive tape and attach the tape to the back of the device and the magnet. See the following figure.

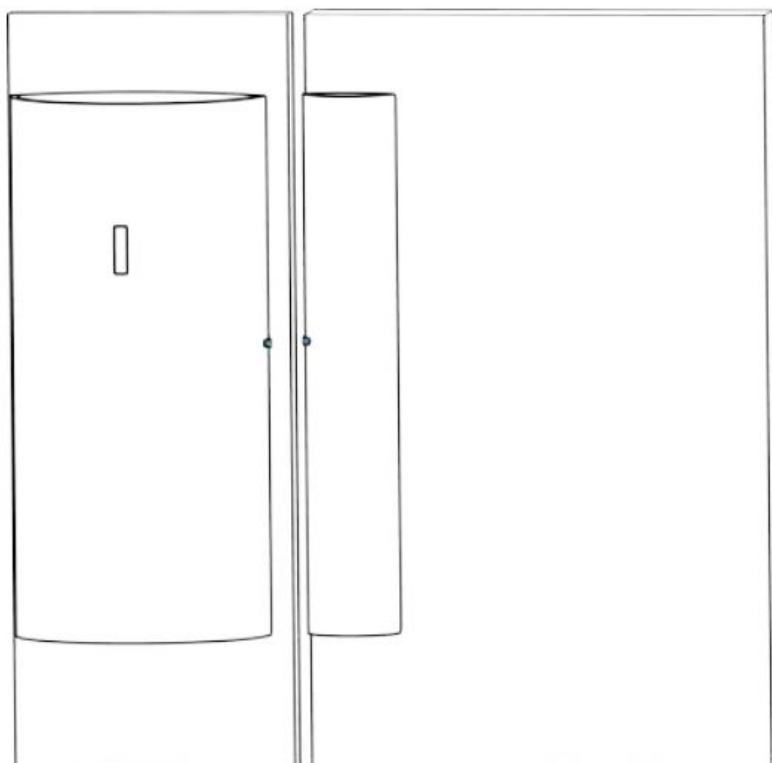
Figure 2: Double-sided adhesive tape placement on the device and magnet



Callout	Description
A	Double-sided adhesive tape

2. Place the device on the frame of a window or door and place the magnet on the moving surface of the window or door itself, directed according to the positioning marks. See the following figure.

Figure 3: Device and magnet position on door and door frame



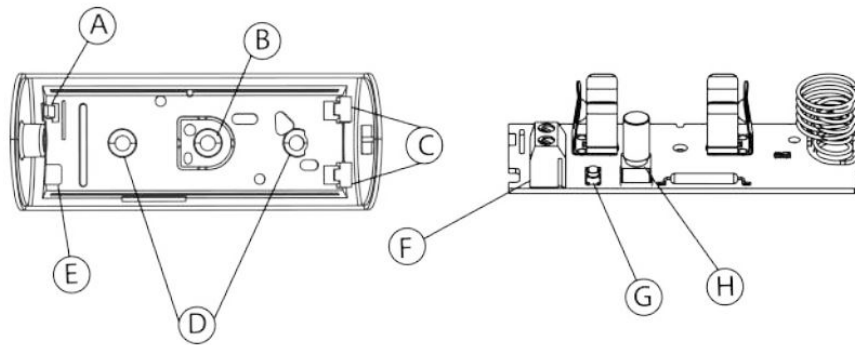
Note: Mounting using adhesive tape is permitted only for UL/ULC residential installations. Use only the adhesive tape that was provided with the device.

Mounting the device using screws

About this task:

Note: Mounting using screws is required for UL/ULC commercial burglary and residential fire type installations. Wall tamper (break-away segment) shall also be enabled.

Figure 4: Internal view



Callout	Description
A	Flexible electronic board retainer
B	Break-away segment
C	Electronic board edge supports
D	Mounting holes
E	Wiring inlet
F	Terminal block
G	Enroll button
H	Tamper switch

1. To open the device cover, use a screwdriver to loosen the cover screw and separate the base from the cover.

Figure 5: Device cover removal

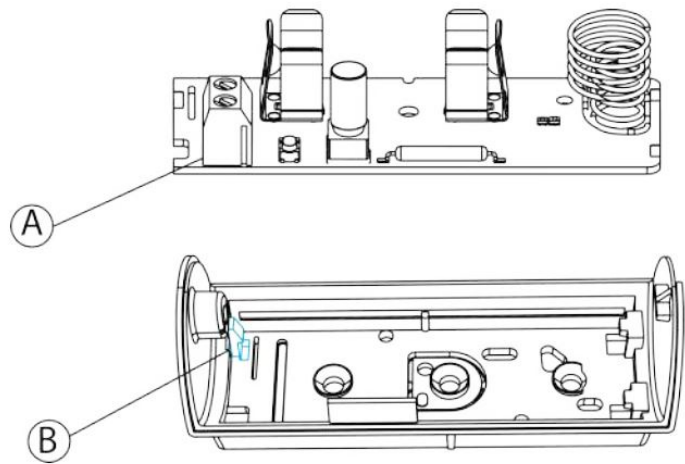


2. Remove the battery while pressing the tamper switch.

Note: When the cover is removed, a tamper message is transmitted to the control panel. Subsequent removal of the battery prevents transmission of tamper restore, leaving the control panel in permanent alert. Pressing the tamper switch when removing the battery prevents this.

3. Flex the retainer and remove the electronic board. See the following figure.

Figure 6: Removing the electronic board



Callout	Description
A	Electronic board
B	Retainer

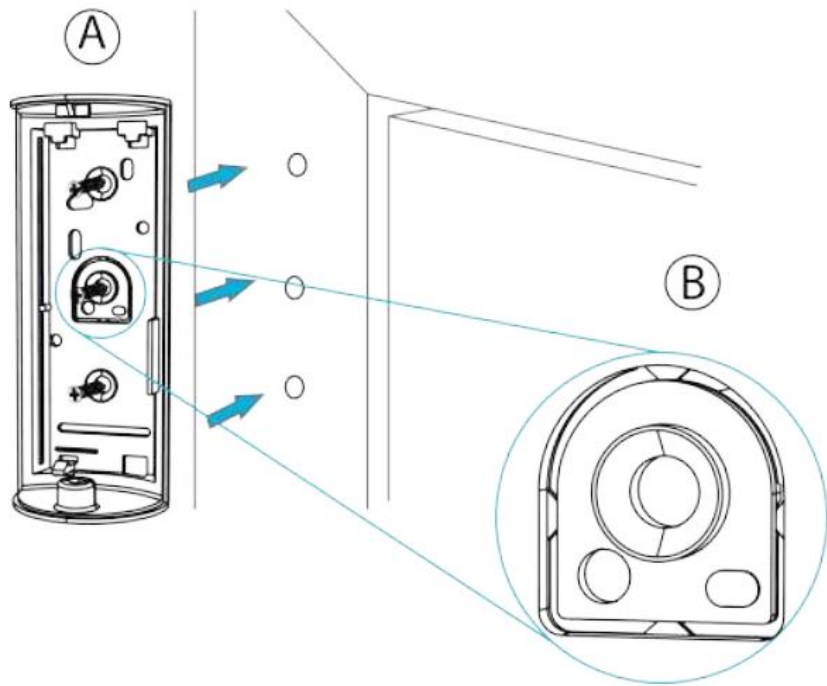
4. Screw the device base on to the door or window frame. See the following figure.

Note:

Make sure to fasten the break-away segment to the frame. If the device is forcibly removed from the wall, this segment will break away from the base, causing the tamper switch to open. See Figure 7 A.

Wall tamper is required for UL/ULC commercial burglary and residential fire installations.

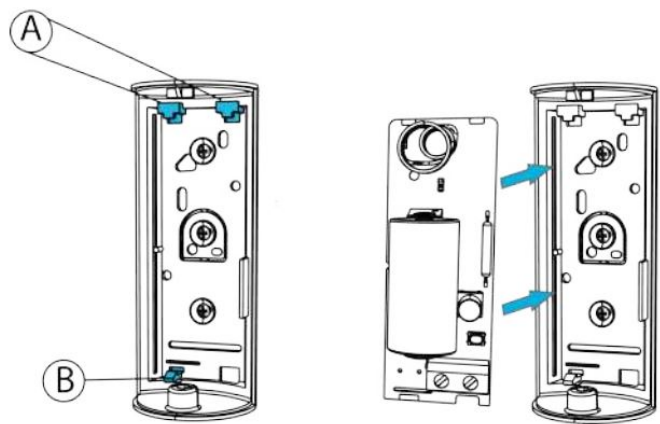
Figure 7: Device screw installation



Callout	Description
A	Screwing device base
B	Break-away Segment

5. Reinsert the battery. See Replacing the battery for more details.
6. To reattach the electronic board to the base, flex the retainer and place the electronic board under the electronic board edge supports. Then release the retainer back in place to fasten the electronic board. See the following figure.

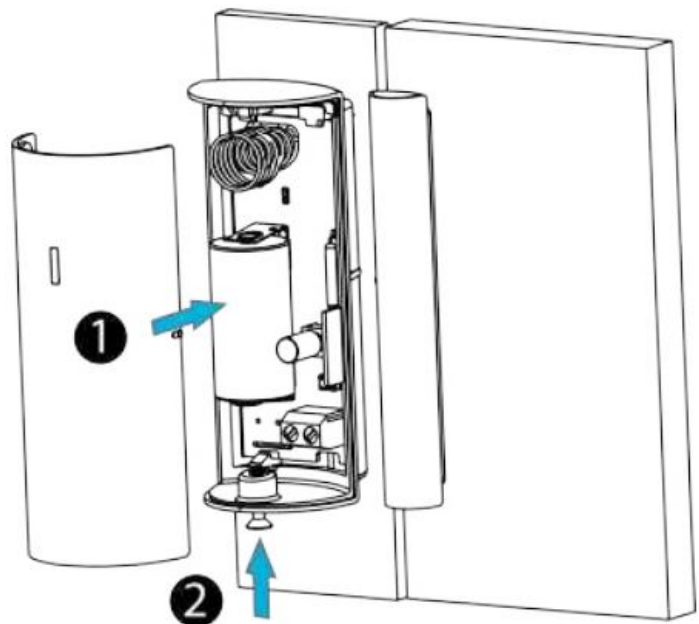
Figure 8: Reattaching the electronic board



Callout	Description
A	Electronic board edge supports
B	Retainer

7. Clip the cover onto the device base and tighten the cover screw. See the following figure.

Figure 9: Closing the device cover

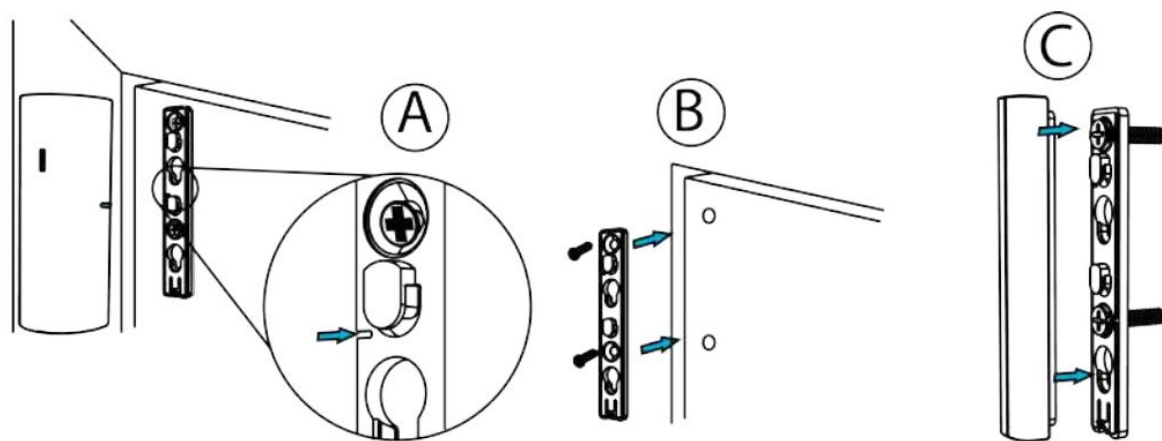


8. Align the magnet bracket to the device according to the positioning marks. See Figure 10 A.

9. Screw the magnet bracket onto the door or window frame. See Figure 10 B.

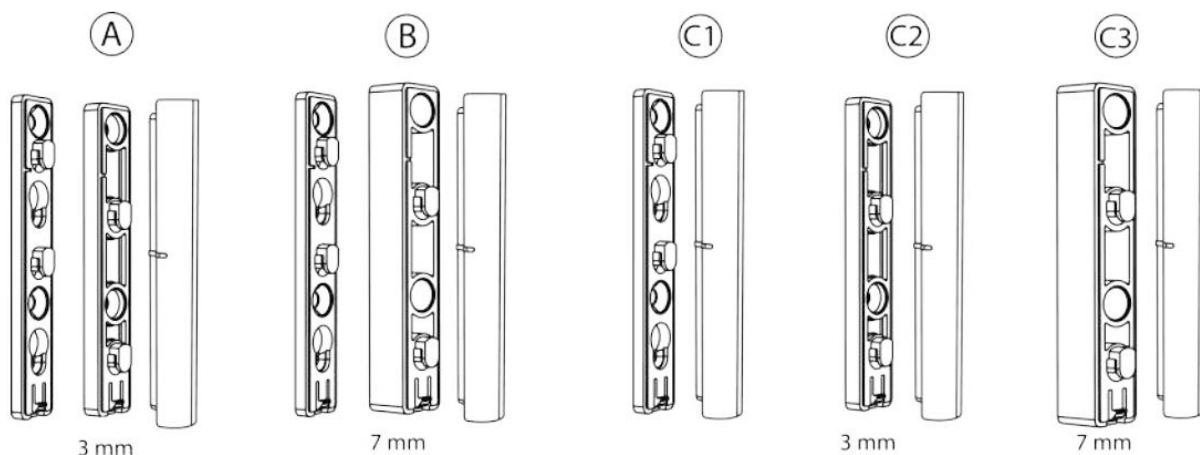
10. Attach the magnet to the bracket. See Figure 10 C.

Figure 10: Magnet screw installation



11. Optional: You can add 3 mm or 7 mm spacers to the magnet. Clip the spacers onto the bracket in the required combination.

Figure 11: Spacer mounting combinations



Callout	Description
A	Bracket + 3 mm spacer
B	Bracket + 7 mm spacer
C1	Bracket only
C2	3 mm spacer only
C3	7 mm spacer only

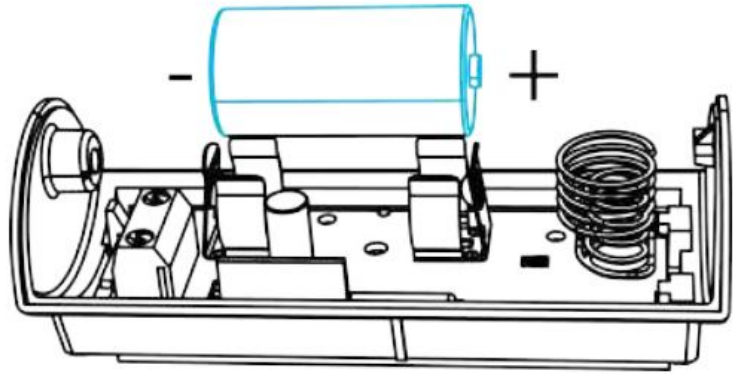
Replacing the battery

Before you begin:

CAUTION: Risk of explosion if battery is replaced by an incorrect type. Dispose of used batteries according to the manufacturer's instructions and according to local rules and regulations.

1. Remove the device cover. See Figure 5.
2. Remove the battery. See Figure 12.
3. Insert the new battery while observing battery polarity.

Figure 12: Battery removal and insertion



4. Press down on the battery until it fits into place.
5. Close the device cover and fasten the cover screw. See Figure

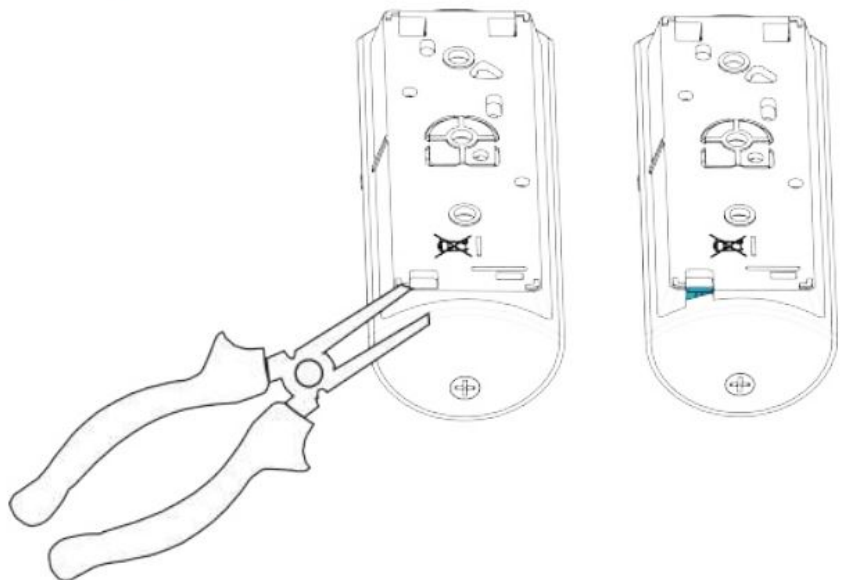
Note: After restoring a low battery, the system may take up to 5 minutes to clear the trouble.

Wiring the auxiliary input

About this task: The auxiliary input is programmable as either Normally Open (NO), Normally Closed (NC), End Of Line (EOL), Double End of Line (DEOL), and Triple End of Line (TEOL).

1. Remove the device cover. See Figure 5.
2. Use a long nose pliers to remove the wiring inlet.

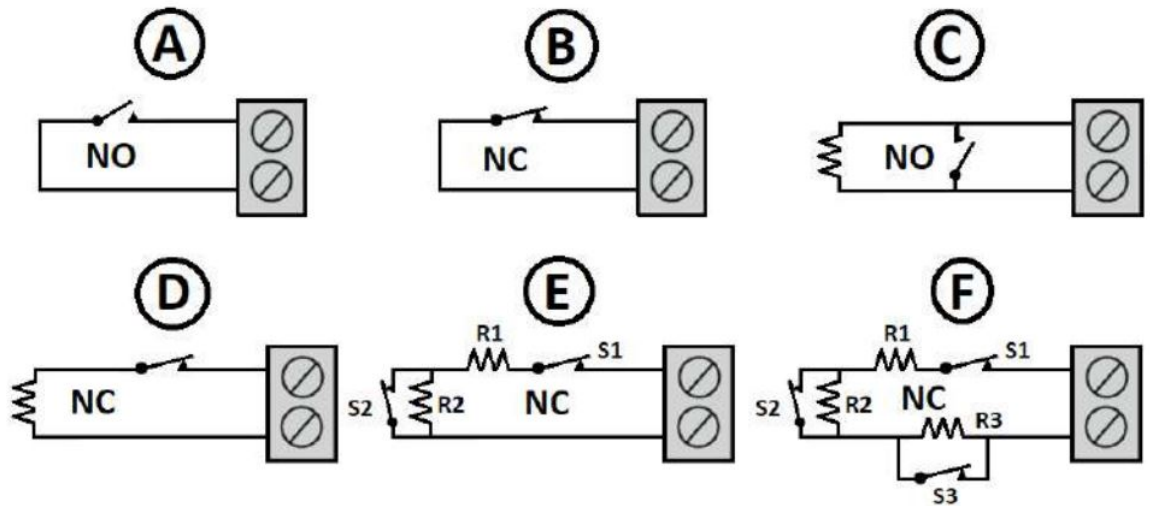
Figure 13: Removing the wiring inlet



3. Connect the auxiliary sensor contacts across the auxiliary input terminals.
4. If the auxiliary input is defined as NC, series connected NC sensor contacts must be used exclusively. An EOL resistor is not required.
5. If the auxiliary input is defined as NO, parallel connected NO sensor contacts must be used exclusively. An EOL resistor is not required.
6. For EOL supervision, NC sensor contacts can be used. A 5.6 k EOL resistor must be wired at the far end of the zone loop.

Note: For UL/ULC listed installations use Model EOLR-2.

Figure 14: Alarm circuit options with EOL resistors



Callout	Description
A	NO switch
B	NC switch
C	EOL: NO switch; 5.6 kΩ resistor
D	EOL: NC switch; 5.6 kΩ resistor
E	DEOL: NC switch only; R1=5.6 kΩ resistor; S1=tamper R2=5.6 kΩ resistor; S2=Alarm
F	TEOL: NC switch only; R1=5.6 kΩ resistor; S1=tamper R2=5.6 kΩ resistor; S2=alarm R3=10 kΩ resistor; S3=fault S2 and S3=masking

Notes: For UL/ULC installations, the burglary initiating device connected to the initiating circuit must be located within 3 ft, in the same room, as the transmitter if the AUX input is not configured as EOL. For UL/ULC installations, connect only UL/ULC listed devices to the auxiliary wiring input. An alarm message is transmitted once the loop is opened or short circuited.

7. Close the device cover and fasten the cover screw. See Figure 9.

UL985 and ULC-S545 short range RF transmitter application

Model PGP9945E is also UL/ULC listed as a short range RF transmitter for use in Residential fire applications in conjunction with UL/ULC listed fire alarm initiating devices (for example mechanical heat detectors, manual pull stations, sprinkler system flow sensors, etc.). The transmitter shall be installed using provided screws and the back tamper shall be enabled. The heat detector shall be connected to the wired input of the RF transmitter device and the maximum wire length shall not exceed 30 ft (10m). The Reed switch operation shall be disabled. When enrolling the device in the compatible receiver/control panel combination set the AUX input as Smoke/Heat device with EOL supervision in order to transmit a fire alarm when the external input is activated. When the input circuit is open a trouble condition is generated. An example of compatible initiating devices that could be used in this type of application is the System Sensor UL listed 5600 Series Mechanical Heat Detectors (only models that have self restoring rate of rise sensors 5601P, 5602, 5621, 5622). Refer to the compatible devices installation, testing, and maintenance instructions. Test the self-restoring rate of rise models using a hair dryer or heat gun. Detectors shall be installed as per NFPA72 and/or the local authority having jurisdiction. When testing the ROR element, to prevent the activation of the fixed temperature element, the heat source must not exceed the fixed temperature rating of the detector.

Note: For UL/ULC applications when the external contact is used it is to serve one initiating device only.

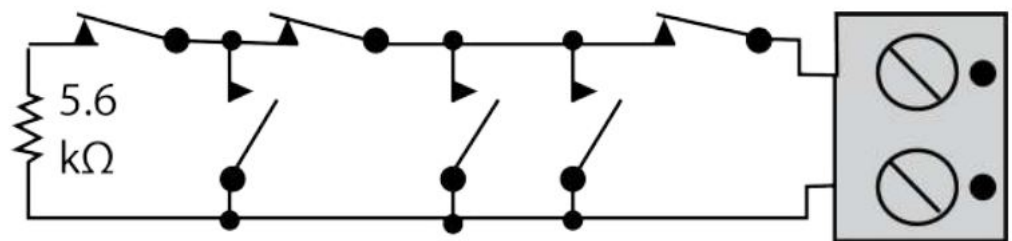
Wiring the auxiliary input in fullback mode

About this task: This section is relevant only for devices enrolled in fullback mode as PGx945.

1. Connect the auxiliary sensor contacts across the auxiliary input terminals.
2. If the auxiliary input is defined as NC, series connected NC sensor contacts must be used exclusively. An EOL resistor is not required.
3. If the auxiliary input is defined as NO, parallel connected NO sensor contacts must be used exclusively. A 5.6 k EOL resistor must be wired at the far end of the zone loop.
4. For EOL supervision: NC sensor contacts can be used, as shown in Figure 14. A 5.6 k EOL resistor may be wired at the far end of the zone loop. The following figure illustrates an NO and NC alarm circuit with EOL resistor.

Note: An alarm message is transmitted once the loop is opened or short circuited.

Figure 15: EOL Wiring Example



Directional magnet distances for event triggers

The following figure and table display the directional magnet distances that trigger open or close events.

Figure 16: Range coverage directions

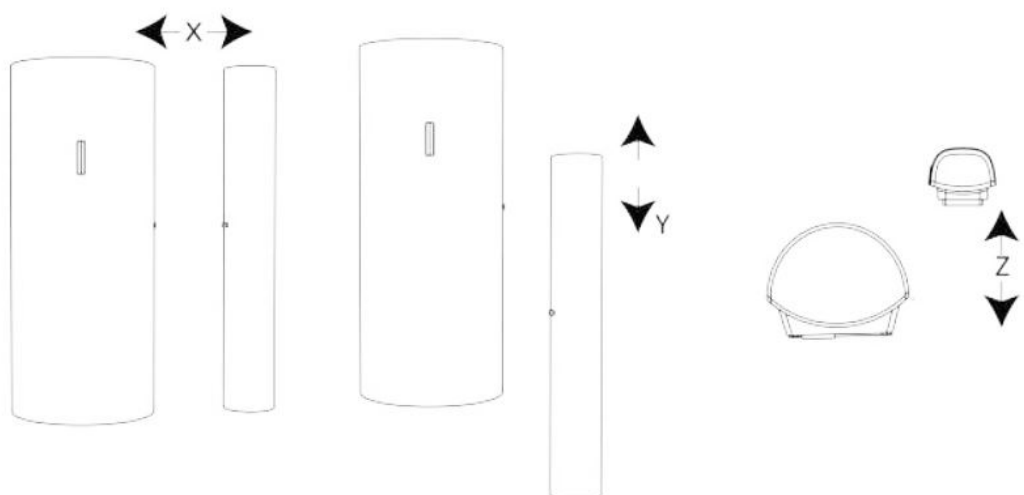


Table 2: Directional magnet distances for event triggers

Non-metallic surface		Supports	Metallic surface	
Opening	Closing	Direction	Opening	Closing
24 mm (0.94 in.)	20 mm (0.79 in.)	X	9 mm (0.35 in.)	7 mm (0.27 in.)
15 mm (0.59 in.)	12 mm (0.47 in.)	Y	12 mm (0.47 in.)	9 mm (0.35 in.)
30 mm (1.18 in.)	17 mm (0.67 in.)	Z	18 mm (0.71 in.)	14 mm (0.55 in.)

Local diagnostics test

About this task: After power-up or closing the cover, the device automatically enters Test Mode for 15 minutes. To manually enter the devices into Test Mode refer to the Control Panel Installer Guide.

1. Before you start the test, remove the device cover from the base. See Figure 5.
2. Close the cover to return the tamper switch to its normal position.
3. Momentarily open the door or window and verify the red LED blinks, indicating detection.

After 2 seconds one of the LEDs blinks three times. The following table indicates received signal strength indication.

Table 3: Signal strength indication

LED response	Reception
Green LED blinks	Strong
Yellow LED blinks	Good
Red LED blinks	Poor
No blinks	No communication

► **Important:** Reliable reception must be assured. Therefore, poor signal strength is not acceptable. If you receive a poor signal from the device, relocate it and re-test until a good or strong signal strength is received.

❶ **Note:**

It is recommended to have a strong signal strength and you must verify the signal strength using the control panel's diagnostic test. For detailed Diagnostics Test instructions, refer to the control panel installer guide.

❶ **Note:** For UL/ULC installations, only strong signal levels are acceptable.

❶ **Note:** After installation, verify the product functionality in conjunction with the compatible receivers.

Specifications

Frequency Band	912 to 919 MHz
Modulation	GFSK
Communication Protocol	PowerG
Battery Type	3 V Lithium CR123A GP battery only

Battery Life	8 years with typical use at room temperature 25°C (77°F) not evaluated by UL/ULC.
Low Battery Threshold	2.5 V at room temperature 25°C (77°F)
Nominal operating voltage	3 V
Operating Temperature	-10 °C (14 °F) to 55 °C (131 °F). UL/ULC only verified range: 0 °C (32 ° F) to 49 °C (120°F)
Storage Temperature	-20°C (-4°F) to 70°C (158°F)
Relative Humidity	Up to 93% non-condensing
Dimensions (LxWxD)	89 mm x 37 mm x 30 mm (3.5 in. x 1.5 in. x 1.2 in.)
Weight (including battery)	53 g (1.9 oz)
Color	White
Auxiliary Input Cable Length	10 m max, AWG22
Auxiliary Input EOL Resistor	5.6 KΩ

Compliance with standards

The PGP945E complies with the following standards:

PGP9945E	FCC (912 to 919 MHz): 47CFR part 15.427 ISED (912 to 919 MHz): RSS-247 UL/ULC: UL 634, ULC/ORD-C634, UL985, ULC-S545
-----------------	---

FCC and ISED Canada Compliance Statement

This device complies with FCC Rules Part 15 and with ISED Canada license-exempt RSS standard(s). Operation is subject to two conditions:

(1) This device may not cause harmful interference, and (2) this device must accept any interference that may be received or that may cause undesired operation.

To comply with FCC Section 1.1310 for human exposure to radio frequency electromagnetic fields and ISED Canada requirements, implement the following instruction:

A distance of at least 20cm. between the equipment and all persons should be maintained during the operation of the equipment.

12 PGP945E Wired Input Door/Window Magnetic Contact Installation Guide D-308447 PGP945E Rev. 0

Note: This equipment has been tested and found to comply with the limits for a Class B digital device, pursuant to part 15 of the FCC Rules. These limits are designed to provide reasonable protection against harmful interference in a residential installation. This equipment generates, uses and can radiate radio frequency energy and, if not installed and used in accordance with the instructions, may cause harmful interference to radio communications. However, there is no guarantee that interference will not occur in a particular installation. If this equipment does cause harmful interference to radio or television reception, which can be determined by turning the equipment off and on, the user is encouraged to try to correct the interference by one or more of the following measures:

- Reorient or relocate the receiving antenna.
- Increase the separation between the equipment and receiver.
- Connect the equipment into an outlet on a circuit different from that to which the receiver is connected.
- Consult the dealer or an experienced radio/TV technician for help.

This Class B digital apparatus complies with Canadian ICES-003.

⚠ WARNING: Changes or modifications to this equipment not expressly approved by the party responsible for compliance (DSC.) could void the user's authority to operate the equipment.



UL/ULC notes

Only model PGP9945E operating in the frequency band 912-919MHz is UL/cUL listed. The PGP9945E has been listed by UL/ULC for commercial and residential burglary applications in accordance with the requirements in the Standards UL 634 and ULC/ORD-C634 for contacts and switches, and in accordance with UL985 and ULC-S545 as a residential fire RF transmitter (short range). For UL/ ULC installations use these device only in conjunction with compatible DSC wireless receivers: HSM2HOST9, HS2LCDRF(P)9, HS2ICNRF(P) 9, HS2LCDRFPRO9, PG9920, and Qolsys IQPanel2, IQHub, IQPanel4. After installation verify the product functionality in conjunction with the compatible receiver used.

Safety Instructions

Read the safety information before you install the equipment.

The detector shall be installed and used within an environment that provides the pollution degree max 2 and over voltages category II in non-hazardous locations, indoor only. The equipment is designed to be installed by SERVICE PERSONS only; (SERVICE PERSON is defined as a person having the appropriate technical training and experience necessary to be aware of hazards to which that person may be exposed in performing a task and of measures to minimize the risks to that person or other persons).

The detector is to be installed in an indoor dry location. Exposure to weather or corrosive conditions may damage the unit.

W.E.E Product recycling declaration



For information regarding the recycling of this product you must contact the company from which you originally purchased it. If you are discarding this product and not returning it for repair then you must ensure that it is returned as identified by your supplier. This product is not to be thrown away with everyday waste. Directive 2012/19/EU Waste Electrical and Electronic Equipment.

About PGP945E

The PGP945E is a two-way wireless PowerG magnetic contact device. The device includes a builtin reed switch that opens when the magnet is removed from the contact. There is a separate auxiliary hard-wired input used with additional sensors, for example, push button detectors, or door contacts. The device has the following features:

- Two-way PowerG communication with the control panel
- Front and back cover tamper detection
- Periodic supervision message is transmitted automatically to the control panel at regular interval
- LED light signal strength indication during installation
- Discreet transmission of supervision message
- Power G two-way frequency hopping spread spectrum time-division multiple access (FHSS-TDMA) technology
- Low battery indication
- Remote firmware upgrade
- User-selectable operation of auxiliary input as Normally open, Normally closed, End of Line (EOL), Double EOL, or Triple EOL
- Temperature sensing and reporting

Limited Warranty

Digital Security Controls warrants that for a period of 12 months from the date of purchase, the product shall be free of defects in materials and workmanship under normal use and that in fulfillment of any breach of such warranty, Digital Security Controls shall, at its option, repair or replace the defective equipment upon return of the equipment to its repair depot.

This warranty applies only to defects in parts and workmanship and not to damage incurred in shipping or handling, or damage due to causes beyond the control of Digital Security Controls such as lightning, excessive voltage, mechanical shock, water damage, or damage arising out of abuse, alteration or improper application of the equipment.

The foregoing warranty shall apply only to the original buyer, and is and shall be in lieu of any and all other warranties, whether expressed or implied and of all other obligations or liabilities on the part of Digital Security Controls.

Digital Security Controls neither assumes responsibility for, nor authorizes any other person purporting to act on its behalf to modify or to change this warranty, nor to assume for it any other warranty or liability concerning this product.

In no event shall Digital Security Controls be liable for any direct, indirect or consequential damages, loss of anticipated profits, loss of time or any other losses incurred by the buyer in connection with the purchase, installation or operation or failure of this product.

Warning: Digital Security Controls recommends that the entire system be completely tested on a regular basis. However, despite frequent testing, and due to, but not limited to, criminal tampering or electrical disruption, it is possible for this product to fail to perform as expected.

Important Information: Changes or modifications not expressly approved by Digital Security Controls could void the user's authority to operate this equipment.

EULA

IMPORTANT READ CAREFULLY: DSC Software purchased with or without Products and Components is copyrighted and is purchased under the following license terms: This End User

License Agreement ("EULA") is a legal agreement between You (the company, individual or entity who acquired the Software and any related Hardware) and Digital Security Controls, a division of Tyco Safety Products Canada Ltd. ("DSC"), the manufacturer of the integrated security systems and the developer of the software and any related products or components ("HARDWARE") which

You acquired. If the DSC software product ("SOFTWARE PRODUCT" or "SOFTWARE") is intended to be accompanied by HARDWARE, and is NOT accompanied by new HARDWARE, You may not use, copy or install the SOFTWARE PRODUCT. The SOFTWARE PRODUCT includes computer software, and may include associated media, printed materials, and "online" or electronic documentation. Any software provided along with the

SOFTWARE PRODUCT that is associated with a separate end user license agreement is licensed to You under the terms of that license agreement. By installing, copying, downloading, storing, accessing or otherwise using the SOFTWARE PRODUCT, You agree unconditionally to be bound by the terms of this EULA, even if this EULA is deemed to be a modification of any previous arrangement or contract. If You do not agree to the terms of this

EULA, DSC is unwilling to license the SOFTWARE PRODUCT to You, and You have no right to use it. SOFTWARE PRODUCT LICENSE The SOFTWARE PRODUCT is protected by copyright laws and international copyright treaties, as well as other intellectual property laws and treaties. The SOFTWARE PRODUCT is licensed, not sold.

1. GRANT OF LICENSE. This EULA grants You the following rights: (a) Software Installation and Use – For each license You acquire, You may have only one copy of the SOFTWARE PRODUCT installed. (b) Storage/Network Use – The SOFTWARE PRODUCT may not be installed, accessed, displayed, run, shared or used concurrently on or from different computers, including a workstation, terminal or other digital electronic device (“Device”). In other words, if You have several workstations, You will have to acquire a license for each workstation where the SOFTWARE will be used. (c) Backup Copy – You may make back up copies of the SOFTWARE PRODUCT, but You may only have one copy per license installed at any given time. You may use the back up copy solely for archival purposes. Except as expressly provided in this EULA, You may not otherwise make copies of the SOFTWARE PRODUCT, including the printed materials accompanying the SOFTWARE.
2. DESCRIPTION OF OTHER RIGHTS AND LIMITATIONS (a) Limitations on Reverse Engineering, DE compilation and Disassembly – You may not reverse engineer, decompile, or disassemble the SOFTWARE PRODUCT, except and only to the extent that such activity is expressly permitted by applicable law notwithstanding this limitation. You may not make any changes or modifications to the Software, without the written permission of an officer of DSC. You may not remove any proprietary notices, marks or labels from the Software Product. You shall institute reasonable measures to ensure compliance with the terms and conditions of this EULA. (b) Separation of Components – The SOFTWARE PRODUCT is licensed as a single product. Its component parts may not be separated for use on more than one HARDWARE unit. (c) Single INTEGRATED PRODUCT – If You acquired this SOFTWARE with HARDWARE, then the SOFTWARE PRODUCT is licensed with the HARDWARE as a single integrated product. In this case, the SOFTWARE PRODUCT may only be used with the HARDWARE as set forth in this EULA. (d) Rental – You may not rent, lease or lend the SOFTWARE PRODUCT. You may not make it available to others or post it on a server or web site. (e) Software Product Transfer – You may transfer all of Your rights under this EULA only as part of a permanent sale or transfer of the HARDWARE, provided You retain no copies, You transfer all of the SOFTWARE PRODUCT (including all component parts, the media and printed materials, any upgrades and this EULA), and provided the recipient agrees to the terms of this EULA. If the SOFTWARE PRODUCT is an upgrade, any transfer must also include all prior versions of the SOFTWARE PRODUCT. (f) Termination – Without prejudice to any other rights, DSC may terminate this EULA if You fail to comply with the terms and conditions of this EULA. In such event, You must destroy all copies of the SOFTWARE PRODUCT and all of its component parts. (g) Trademarks – This EULA does not grant You any rights in connection with any trademarks or service marks of DSC or its suppliers.
3. COPYRIGHT All title and intellectual property rights in and to the SOFTWARE PRODUCT (including but not limited to any images, photographs, and text incorporated into the SOFTWARE PRODUCT), the accompanying printed materials, and any copies of the SOFTWARE PRODUCT, are owned by DSC or its suppliers. You may not copy the printed materials accompanying the SOFTWARE PRODUCT. All title and intellectual property rights in and to the content which may be accessed through use of the SOFTWARE PRODUCT are the property of the respective content owner and may be protected by applicable copyright or other intellectual property laws and treaties. This EULA grants You no rights to use such content. All rights not expressly granted under this EULA are reserved by DSC and its suppliers.

4. **EXPORT RESTRICTIONS** You agree that You will not export or re export the SOFTWARE PRODUCT to any country, person, or entity subject to Canadian export restrictions.
5. **CHOICE OF LAW:** This Software License Agreement is governed by the laws of the Province of Ontario, Canada.
6. **ARBITRATION** All disputes arising in connection with this Agreement shall be determined by final and binding arbitration in accordance with the Arbitration Act, and the parties agree to be bound by the arbitrator's decision. The place of arbitration shall be Toronto, Canada, and the language of the arbitration shall be English.
7. **LIMITED WARRANTY** (a) **NO WARRANTY** DSC PROVIDES THE SOFTWARE "AS IS" WITHOUT WARRANTY. DSC DOES NOT WARRANT THAT THE SOFTWARE WILL MEET YOUR REQUIREMENTS OR THAT OPERATION OF THE SOFTWARE WILL BE UNINTERRUPTED OR ERROR-FREE. (b) **CHANGES IN OPERATING ENVIRONMENT** DSC shall not be responsible for problems caused by changes in the operating characteristics of the HARDWARE, or for problems in the interaction of the SOFTWARE PRODUCT with non-DSC SOFTWARE or HARDWARE PRODUCTS. (c) **LIMITATION OF LIABILITY; WARRANTY REFLECTS ALLOCATION OF RISK** IN ANY EVENT, IF ANY STATUTE IMPLIES WARRANTIES OR CONDITIONS NOT STATED IN THIS LICENSE AGREEMENT, DSC'S ENTIRE LIABILITY UNDER ANY PROVISION OF THIS LICENSE AGREEMENT SHALL BE LIMITED TO THE GREATER OF THE AMOUNT ACTUALLY PAID BY YOU TO LICENSE THE SOFTWARE PRODUCT AND FIVE CANADIAN DOLLARS (CAD\$5.00). BECAUSE SOME JURISDICTIONS DO NOT ALLOW THE EXCLUSION OR LIMITATION OF LIABILITY FOR CONSEQUENTIAL OR INCIDENTAL DAMAGES, THE ABOVE LIMITATION MAY NOT APPLY TO YOU. (d) **DISCLAIMER OF WARRANTIES** THIS WARRANTY CONTAINS THE ENTIRE WARRANTY AND SHALL BE IN LIEU OF ANY AND ALL OTHER WARRANTIES, WHETHER EXPRESSED OR IMPLIED (INCLUDING ALL IMPLIED WARRANTIES OF MERCHANTABILITY OR FITNESS FOR A PARTICULAR PURPOSE) AND OF ALL OTHER OBLIGATIONS OR LIABILITIES ON THE PART OF DSC. DSC MAKES NO OTHER WARRANTIES. DSC NEITHER ASSUMES

NOR AUTHORIZES ANY OTHER PERSON PURPORTING TO ACT ON ITS BEHALF TO MODIFY OR TO CHANGE THIS WARRANTY, NOR TO ASSUME FOR IT ANY OTHER WARRANTY OR LIABILITY CONCERNING THIS SOFTWARE PRODUCT. (e) **EXCLUSIVE REMEDY AND LIMITATION OF WARRANTY** UNDER NO CIRCUMSTANCES SHALL DSC BE LIABLE FOR ANY SPECIAL, INCIDENTAL, CONSEQUENTIAL OR INDIRECT DAMAGES BASED UPON BREACH OF WARRANTY, BREACH OF CONTRACT, NEGLIGENCE, STRICT LIABILITY, OR ANY OTHER LEGAL THEORY. SUCH DAMAGES INCLUDE, BUT ARE NOT LIMITED TO, LOSS OF PROFITS, LOSS OF THE SOFTWARE PRODUCT OR ANY ASSOCIATED EQUIPMENT, COST OF CAPITAL, COST OF SUBSTITUTE OR REPLACEMENT EQUIPMENT, FACILITIES OR SERVICES, DOWN TIME, PURCHASERS TIME, THE CLAIMS OF THIRD PARTIES, INCLUDING CUSTOMERS, AND INJURY TO PROPERTY. **WARNING:** DSC recommends that the entire system be completely tested on a regular basis. However, despite frequent testing, and due to, but not limited to, criminal tampering or electrical disruption, it is possible for this SOFTWARE PRODUCT to fail to perform as expected.

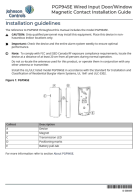

Website: www.dsc.com

Tech. support: 1-800- 387-3630

D-308447 Rev. 0 (03/22)



Documents / Resources

	<p>Johnson Controls PGP945E Wired Input Door/Window Magnetic Contact [pdf] Installation Guide</p> <p>18PG9309, F5318PG9309, PGP945E, Wired Input Door Window Magnetic Contact, PGP945E Wired Input Door Window Magnetic Contact</p>
	<p>Johnson Controls PGP945E Wired Input Door/Window Magnetic Contact [pdf] User Manual</p> <p>18PG9309, F5318PG9309, PGP945E Wired Input Door Magnetic Contact, PGP945E Wired Input Window Magnetic Contact</p>

References

-  [DSC](#)
-  [DSC](#)