



# Johnson Controls Metasys Streamline Project Management User Guide

[Home](#) » [Johnson Controls](#) » Johnson Controls Metasys Streamline Project Management User Guide 

## Contents

- [1 Johnson Controls Metasys Streamline Project Management](#)
- [2 Introducing Metasys Release 14.0](#)
- [3 Choose Metasys 14.0 for features like these](#)
- [4 It's time to act](#)
- [5 Specifications:](#)
- [6 Frequently Asked Questions \(FAQ\):](#)
  - [6.1 Q: Can Metasys Release 14.0 integrate IP devices without additional hardware?](#)
  - [6.2 Q: How can I optimize energy use using Metasys 14.0?](#)
  - [6.3 Q: What is the purpose of the Device Health Indicator?](#)
  - [6.4 Q: How can I upgrade an aging Metasys system?](#)
- [7 Documents / Resources](#)
  - [7.1 References](#)
- [8 Related Posts](#)

**Johnson Controls Metasys Streamline Project Management**



## USER GUIDE

### Introducing Metasys Release 14.0

Streamline project management, speed installation and satisfy clients.

The latest Metasys release includes new lifecycle tools to make your job easier—and new features to help your clients achieve their goals. Streamline workflows and installation. Make networks more efficient and resilient, with secure access between connected building assets and the cloud. And help clients optimize daily operations, including energy use, to meet regulations and reduce costs.



**Streamline  
system design &  
commissioning**



**Improve  
energy  
management**



**Enhance  
security**



**Simplify  
network & user  
management**

### Choose Metasys 14.0 for features like these

#### Flattened architecture

Metasys can now integrate up to 800 IP devices directly into a Metasys server without the need for additional hardware, providing the flexibility to meet the needs of both new construction and retrofit installations.

#### ASHRAE G36 waterside applications

Proven, repeatable, factory-tested ASHRAE G36 airside and waterside HVAC applications drive standardization and save system commissioning time. Implement across an owner's building portfolio to optimize building energy use along with comfort.

## Connected Workflow lifecycle tools

Streamline commissioning and project management with our Connected Workflow Application (CWa), providing industry-standard, persona-based workflows through the convenience of a mobile application tailored for the task at hand (e.g., airflow balancing).

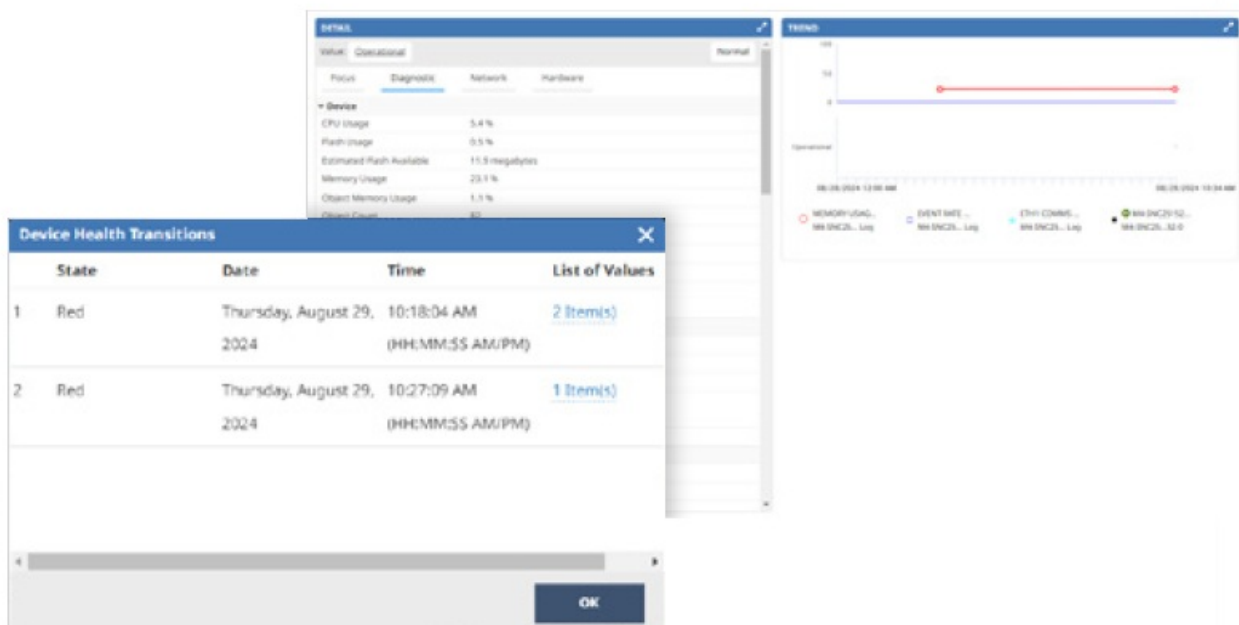
## IPv6 & IEEE 802.1x compliance

IT managers will welcome the flexibility of the IPv6/IPv4 dual mode operation, which enables Metasys SNx engines and servers to use expanded IP address space, auto-configuration, added network security, and more efficient routing, accommodating the ever-changing needs of smart buildings – both on-premise and in conjunction with cloud-based analytics such as OpenBlue. IEEE

802.1x compatibility lets IT managers explicitly control device access and communications within a building's IT network to provide safe, secure connectivity.

## Device health indicator

Improve Metasys SNx engine troubleshooting and reduce downtime with this green/yellow/red traffic light indicator. Monitor 28 predefined and up to 15 customer-defined communication and performance attributes to help identify areas to optimize engine and network performance.

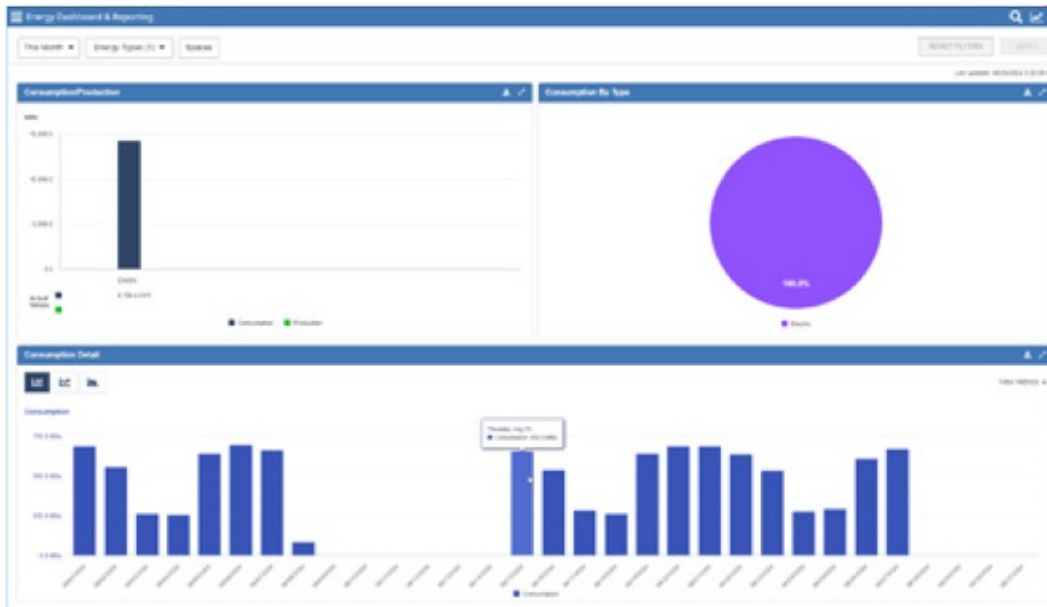


## Metasys user interface (MUI) enhancements

The world-class MUI continues to evolve, offering intuitive navigation and delivering key information in fewer clicks with features like these:

- Current alarm status is now displayed in System Activity, helping users quickly identify and act upon critical alarms with fewer clicks to streamline interactions.
- Graphics Manager user permissions allow non-admin users to view, add or edit graphics, increasing efficiency while protecting the full database.





## It's time to act

With the phaseout of aging Metasys components like SMP, your clients can't afford an out-of-date Metasys system. We're here to partner on an upgrade strategy that fits each installation and budget. Talk to your Johnson Controls representative today,

or visit: [johnsoncontrols.com/building-automation-and-controls/metasys](https://johnsoncontrols.com/building-automation-and-controls/metasys)

## Specifications:

- Product Name: Metasys Release 14.0
- Integration: Up to 800 IP devices directly into a Metasys server
- Compliance: ASHRAE G36, IPv6, IEEE 802.1x
- Features: Connected Workflow Application, Device Health Indicator, Metasys User Interface Enhancements
- Additional: Energy Dashboards (preview), Single sign-on enhancements

## Frequently Asked Questions (FAQ):

**Q: Can Metasys Release 14.0 integrate IP devices without additional hardware?**

A: Yes, Metasys can integrate up to 800 IP devices directly into the server without the need for extra hardware.

**Q: How can I optimize energy use using Metasys 14.0?**

A: Implement ASHRAE G36 applications and utilize the energy dashboards to visualize and report energy usage for better decision-making.


**Q: What is the purpose of the Device Health Indicator?**

A: The Device Health Indicator helps in troubleshooting the SNx engine and improves network performance by monitoring communication attributes.

**Q: How can I upgrade an aging Metasys system?**

A: Contact your Johnson Controls representative to discuss an upgrade strategy that fits your installation and budget.

**Documents / Resources**

	<p><a href="#">Johnson Controls Metasys Streamline Project Management</a> [pdf] User Guide Metasys Streamline Project Management, Streamline Project Management, Project Management, Management</p>
---	---

**References**

- [johnsoncontrols.com](https://www.johnsoncontrols.com)
- [johnsoncontrols.com/building-automation-and-controls/metasys](https://www.johnsoncontrols.com/building-automation-and-controls/metasys)
- [User Manual](#)

Manuals+, Privacy Policy

This website is an independent publication and is neither affiliated with nor endorsed by any of the trademark owners. The "Bluetooth®" word mark and logos are registered trademarks owned by Bluetooth SIG, Inc. The "Wi-Fi®" word mark and logos are registered trademarks owned by the Wi-Fi Alliance. Any use of these marks on this website does not imply any affiliation with or endorsement.