

Johnson Controls IQ Card-433 Wireless Translator Receiver User Guide

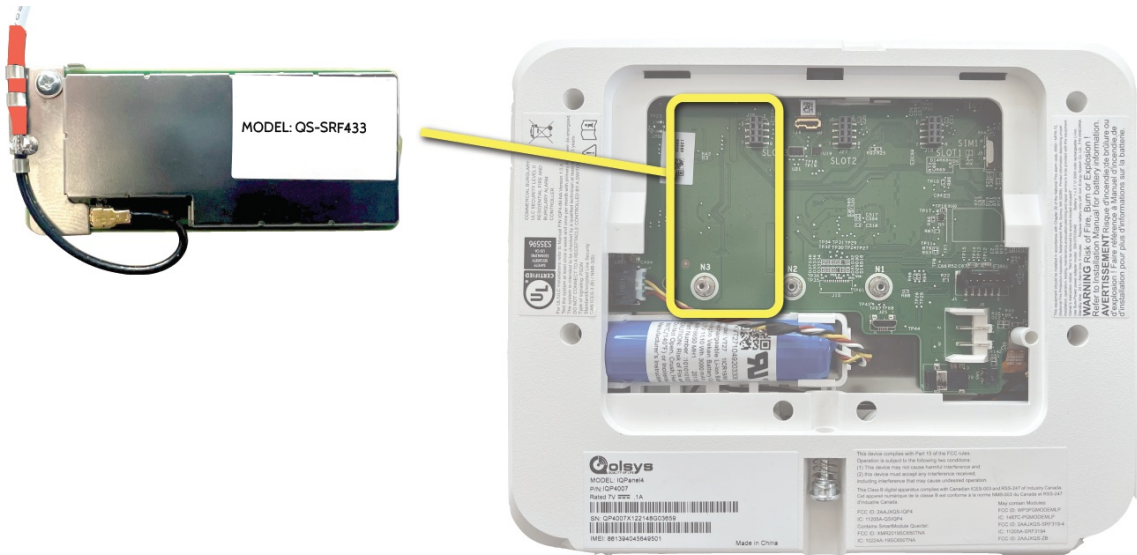
[Home](#) » [Johnson Controls](#) » Johnson Controls IQ Card-433 Wireless Translator Receiver User Guide 

Contents

- 1 Johnson Controls IQ Card-433 Wireless Translator Receiver
- 2 Installing the Card
- 3 QUICK GUIDE
- 4 BEFORE YOU BEGIN
- 5 TESTING THE CARD
- 6 Documents / Resources
 - 6.1 References
- 7 Related Posts



Johnson Controls IQ Card-433 Wireless Translator Receiver



Specifications

- Model: QS-SRF433
- Product Name: IQ Card-433
- Part Number: QC0004-840
- Frequency: 433 MHz
- Compatibility: IQ Panel 4, IQ4 Hub, IQ4 NS

Before You Begin

1. Swipe down and touch Settings then Advanced Settings.
2. Enter your code and touch POWER DOWN to shut down the panel.
3. Unplug or disconnect the power supply by removing the barrel jack connector or unplugging the power supply.

Installing the Card

1. Loosen the retaining screw from the bottom of the panel.
2. Remove the backplate by pulling it away from the panel.
3. Locate SLOT 3 for the SRF daughter cards.
4. Match the pins on the IQ Card to the terminal on the panel and firmly push it into place.
5. Secure the card by tightening the locking screw and ensuring the antenna is connected properly.
6. Replace the back cover and tighten the retaining screw.
7. Plug in the power supply and power on by pressing and holding the power button for 3 seconds.

Testing the Card

1. Access System Tests from Settings then Advanced Settings.
2. Select Daughter Cards Test and run the SRF test.
3. Allow up to 2 minutes for the panel to test the radio in the new IQ Card.
4. If the test fails, reboot the panel and try again.
5. The IQ Panel will automatically recognize the IQ Card-433 once successfully tested.

FAQ

1. **Q: How do I know if the IQ Card-433 is compatible with my system?**

A: The IQ Card-433 is compatible with IQ Panel 4, IQ4 Hub, or IQ4 NS systems for legacy 433 MHz SRF sensors support.

2. **Q: What should I do if the SRF test fails during installation?**

A: If the SRF test fails, reboot the panel and run the test again. Ensure proper installation of the IQ Card-433.

3. **Q: Can I install multiple IQ Cards in different slots?**

A: Yes, you can install multiple IQ Cards in designated slots on your panel for expanded functionality.

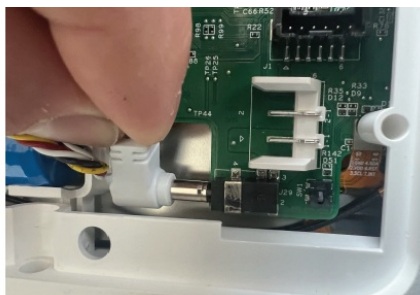
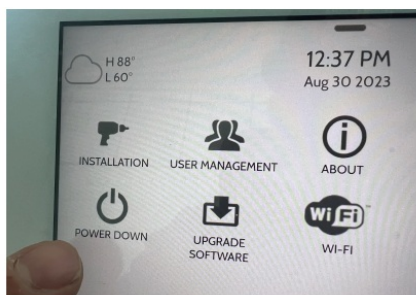
QUICK GUIDE

The IQ Card-433 can be installed in to “Slot 3” of your IQ Panel 4, IQ4 Hub or IQ4 NS to enable support of approved legacy 433 MHz SRF sensors.

- Product Name: IQ Card-433
- Part Number: QC0004-840
- Document last updated on: 8/30/23

BEFORE YOU BEGIN

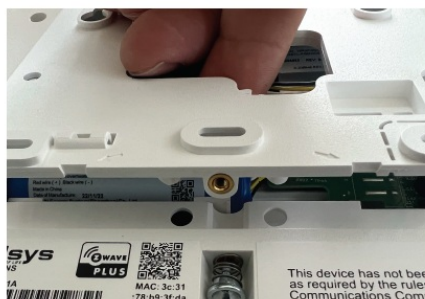
•



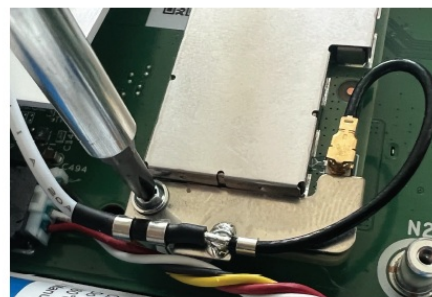
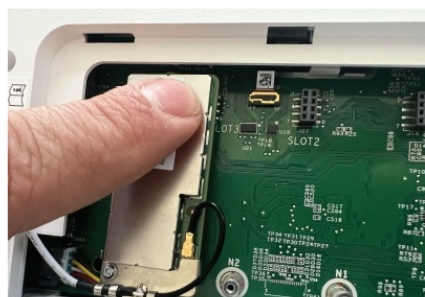
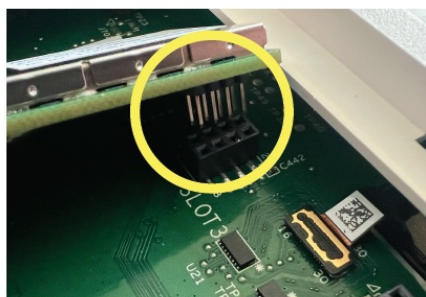
Swipe down and touch “Settings” then “Advanced Settings”. Enter your code and touch “POWER DOWN”.

- Once the IQ Panel has completely powered down, unplug or disconnect the power by removing the barrel jack connector inside the panel or by unplugging the power supply. NOTE: it is NOT required to disconnect the battery.

INSTALLING THE CARD



- From the bottom of the panel, find the retaining screw, loosen completely.
- Once the screw has been loosened, pull the backplate away from the panel to remove.
- Locate “SLOT 3” which is designated as the slot for SRF daughter cards.



- Match the pins on the bottom of the IQ Card to the terminal on the IQ Panel.

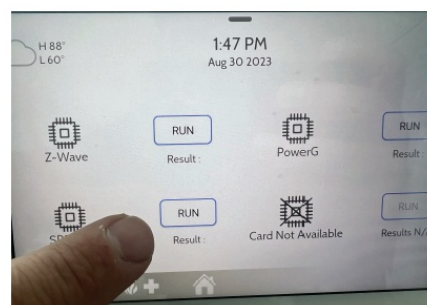
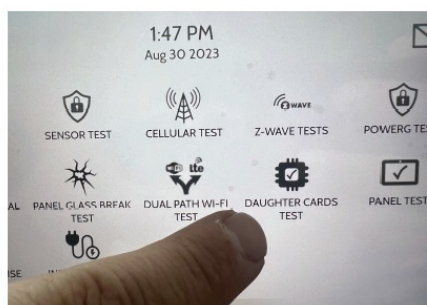
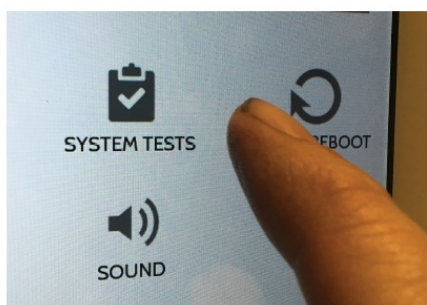
- Push the IQ Card firmly into place.
- Install and tighten the provided locking screw to secure the IQ Card into place. Ensure the antenna remains connected and does not interfere with the battery.
-



Replace the back cover, top tabs first.

- Ensure the white SRF antenna is routed out the hole in the backplate. Press down on the bottom and tighten the retaining screw.
- Plug the power supply back in and press and hold the power button for 3 sec to power on.

TESTING THE CARD



- Swipe down and touch "Settings" then "Advanced Settings". Enter your code and touch "System Tests".
- Touch "Daughter Cards Test".
- Run the "SRF" test. Allow up to 2 min for the panel to successfully test the radio in the new IQ Card. If test fails, reboot the panel and try again.

The IQ Panel will automatically recognize the newly-installed IQ Card-433 and it is now ready to use.

Documents / Resources



[Johnson Controls IQ Card-433 Wireless Translator Receiver](#) [pdf] User Guide
 IQ Card-433, IQ Card-433 Wireless Translator Receiver, Wireless Translator Receiver, Translator Receiver, Receiver

References

- [User Manual](#)

[Manuals+](#), [Privacy Policy](#)

This website is an independent publication and is neither affiliated with nor endorsed by any of the trademark owners. The "Bluetooth®" word mark and logos are registered trademarks owned by Bluetooth SIG, Inc. The "Wi-Fi®" word mark and logos are registered trademarks owned by the Wi-Fi Alliance. Any use of these marks on this website does not imply any affiliation with or endorsement.