

JOHANSON TECHNOLOGY IoT Multiband Antenna User Guide

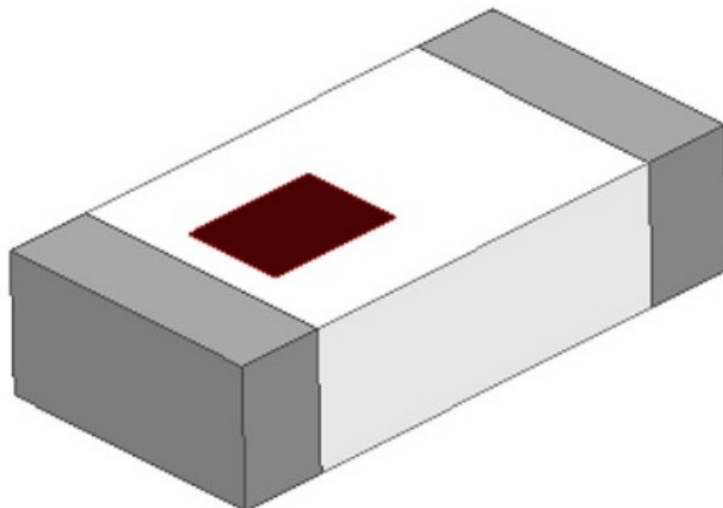
[Home](#) » [JOHANSON TECHNOLOGY](#) » JOHANSON TECHNOLOGY IoT Multiband Antenna User Guide 

Contents

- [1 JOHANSON TECHNOLOGY IoT Multiband Antenna](#)
- [2 Antenna Mounting Guidelines](#)
- [3 Antenna Selection Guide Tool](#)
- [4 Documents / Resources](#)
 - [4.1 References](#)
- [5 Related Posts](#)




JOHANSON TECHNOLOGY IoT Multiband Antenna

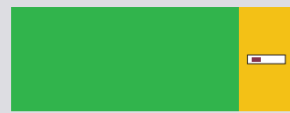


Antenna Mounting Guidelines

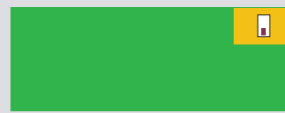
Antenna Mounting Guidelines

Legend

	Antenna Chip		Mounting Area
	PC Board		



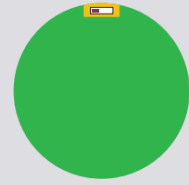
PCB End Mounting



PCB Corner Mounting



PCB Center-Edge Mounting



PCB Circular Mounting

Selection Guide Information

Note: Refer to the website for latest version of the selection guide Antenna Chip Selection Guide is a useful tool early in the design process when a decision on which Johanson antenna chip/s will be selected. First, the designer must choose what type of layout is desired based on the product shape and remove allowable antenna chip placement. The mounting plays a critical role in antenna chip selection. It is important that the designer understands that the “Antenna Optimization Process” is composed of the following: All four of these features work together to determine the final system performance. As such, changes to the no-ground area or chip locations relative to the edge of the circuit board can result in substandard performance. Once the layout type has been selected, then determine the application type and associated operational frequency. In some cases, the selection guide will provide two antenna chip options. We have identified features that should lead the designer to a specific selection.

Antenna Optimization Process



Antenna Selection Guide Tool

Antenna Selection Guide Tool



An easy to use, step-by-step tool to help you get the correct antenna chip part number, for your project design.

Legend



Application Type

1. Bluetooth / Wi-Fi / Zigbee
2. Wi-Fi / UNII 1-3
3. GNSS
4. Sub-GHz ISM
5. Dual-Band
6. Ultra Wide-Band



Frequency



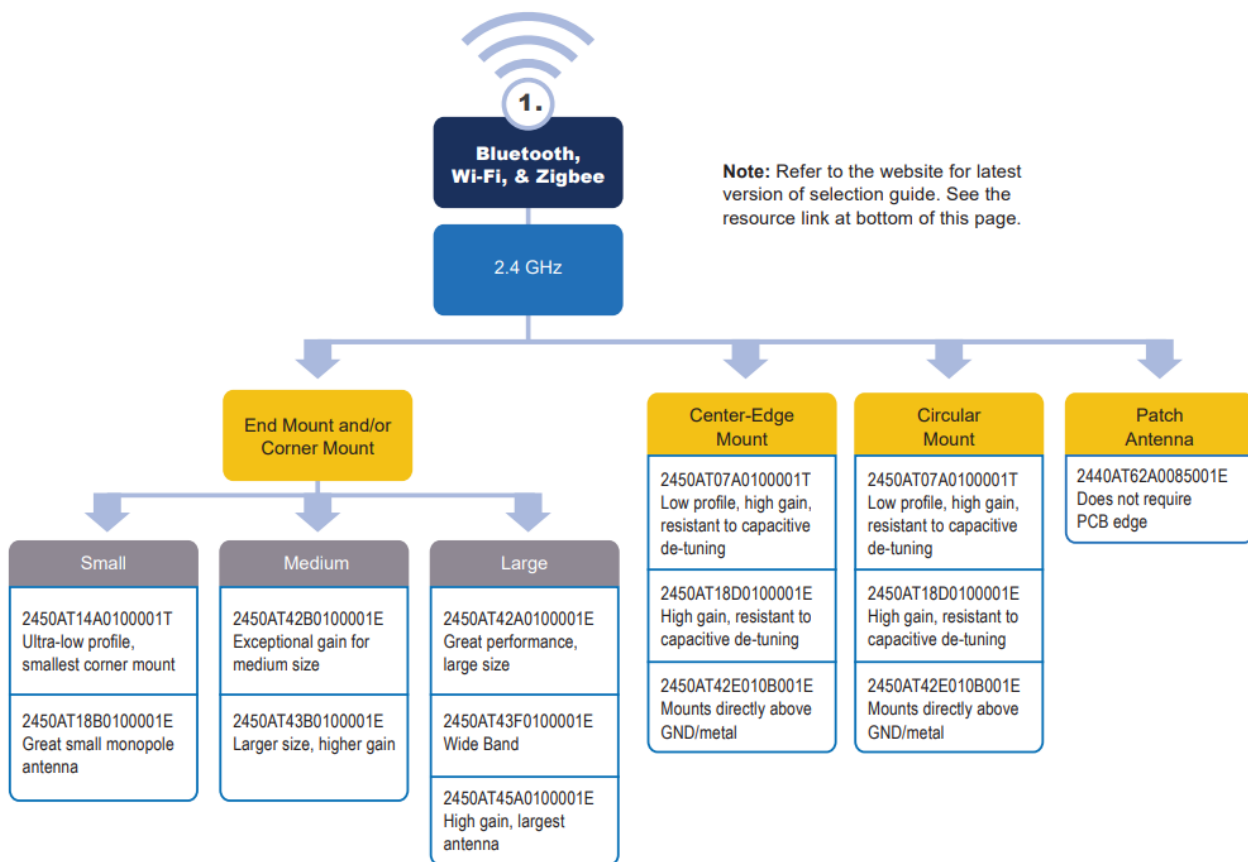
Mounting Location

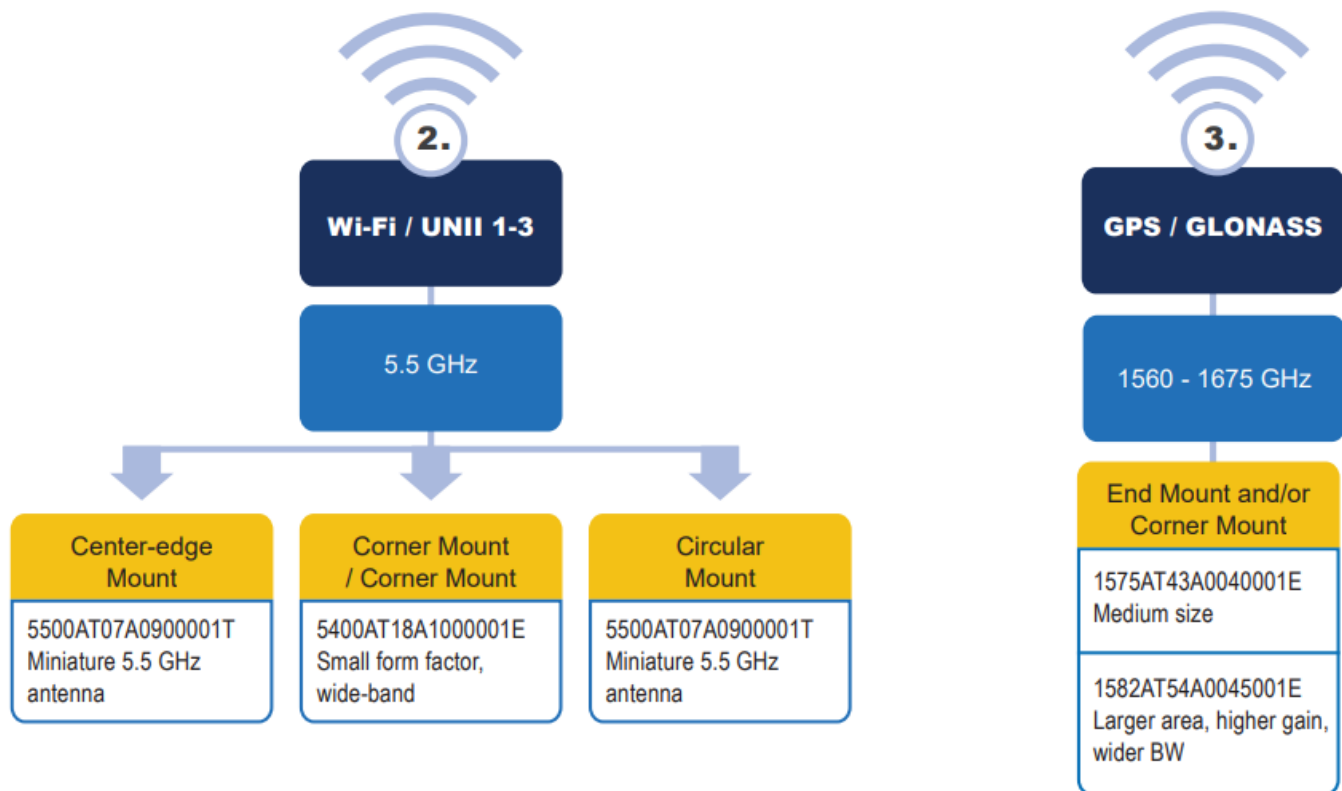


Physical Size
Small / Medium / Large

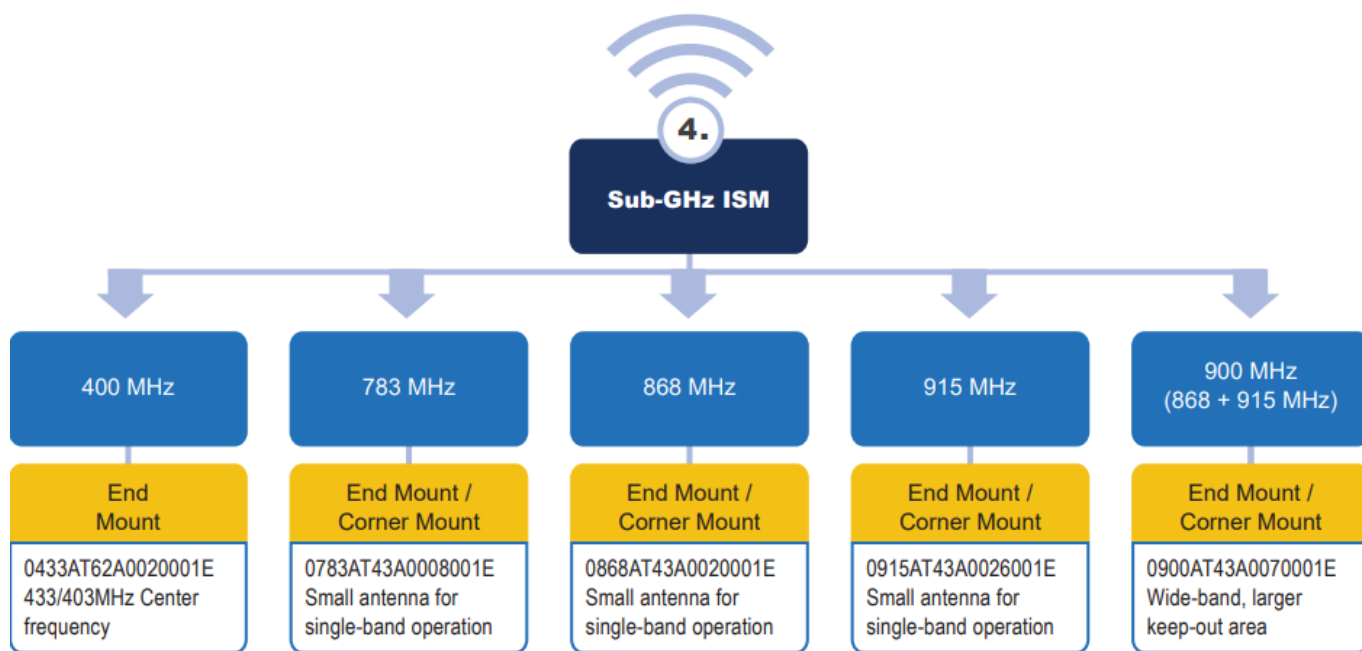


Part Number
Description

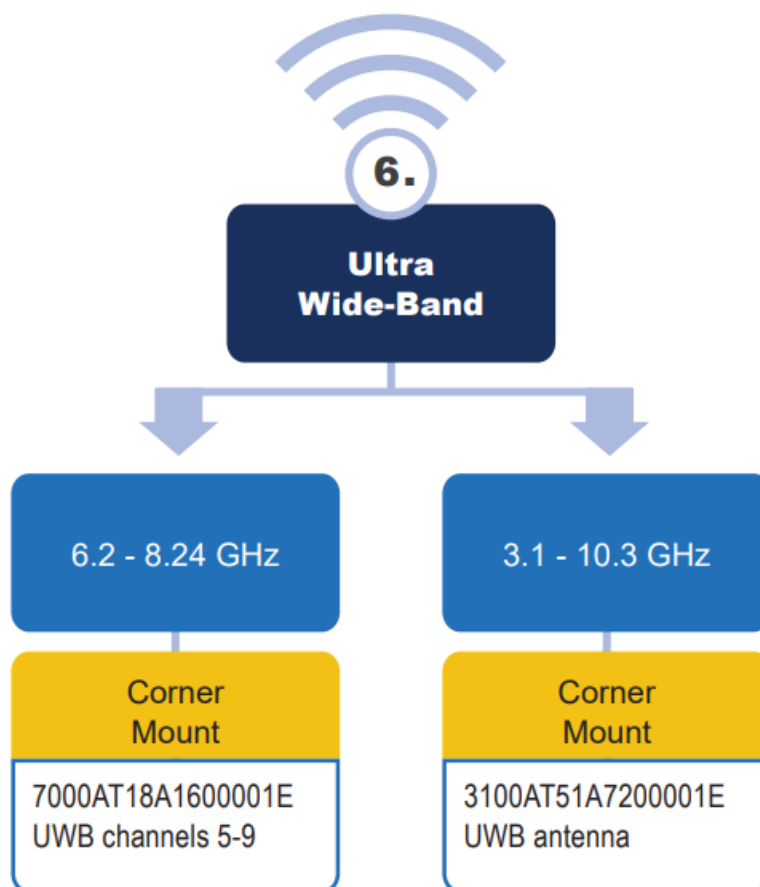
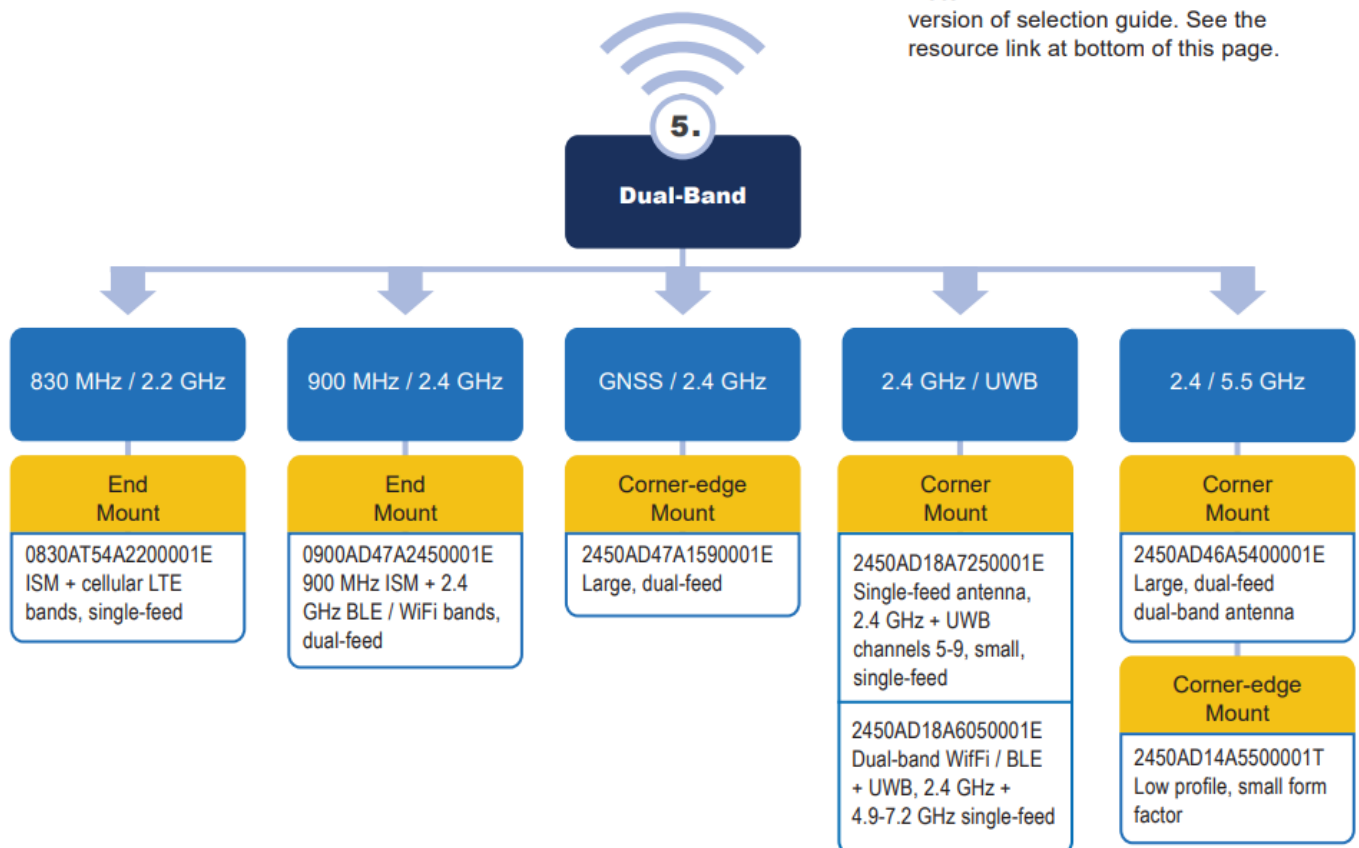




Note: Refer to the website for latest version of the selection guide. See the resource link at the bottom of this page.



Note: Refer to the website for latest version of selection guide. See the resource link at bottom of this page.



Note: Refer to the website for the latest version of the selection guide
<https://www.johansontechnology.com/chip-antenna-selection>

Documents / Resources



[JOHANSON TECHNOLOGY IoT Multiband Antenna](#) [pdf] User Guide
IoT Multiband Antenna, Multiband Antenna, Antenna

References

- [User Manual](#)

Manuals+, Privacy Policy

This website is an independent publication and is neither affiliated with nor endorsed by any of the trademark owners. The "Bluetooth®" word mark and logos are registered trademarks owned by Bluetooth SIG, Inc. The "Wi-Fi®" word mark and logos are registered trademarks owned by the Wi-Fi Alliance. Any use of these marks on this website does not imply any affiliation with or endorsement.