

JOBY Vert Vertical L Bracket



JOBY Vert Vertical L Bracket Instruction Manual

[Home](#) » [JOBY](#) » JOBY Vert Vertical L Bracket Instruction Manual 

Contents

- [1 JOBY Vert Vertical L Bracket](#)
- [2 Product Information](#)
- [3 Product Usage Instructions](#)
- [4 Charging](#)
- [5 Pairing and Connectivity](#)
- [6 Using the Joby Vert](#)
- [7 INSTALLATION](#)
- [8 Frequently Asked Questions](#)
- [9 Documents / Resources](#)
 - [9.1 References](#)
- [10 Related Posts](#)



JOBY Vert Vertical L Bracket



Product Information

Specifications:

- Brand: Joby
- Model: Vert
- Manufacturer: Vitec Imaging Solutions Spa
- Address: Via Valsugana 100, 36022 Cassola (VI), Italy
- Product Code: 0500-222

Product Usage Instructions

Unboxing:

When you receive your Joby Vert, open the package carefully and ensure that all the components are included. The components may include:

- Main unit – Joby Vert
- User manual and warranty card
- Charging cable
- Additional accessories (if applicable)

Charging

Before using the Joby Vert for the first time, it is recommended to fully charge the device. Follow these steps to charge the Vert:

1. Connect one end of the provided charging cable to the charging port on the Vert.
2. Plug the other end of the cable into a power source such as a USB charger or computer.
3. The charging indicator light on the Vert will turn on, indicating that it is charging.
4. Allow the device to charge completely. The charging time may vary depending on the battery level.
5. Once fully charged, disconnect the charging cable from the Vert.

Pairing and Connectivity

The Joby Vert can be paired and connected to your smartphone or other compatible devices using Bluetooth. Follow these steps to pair and connect:

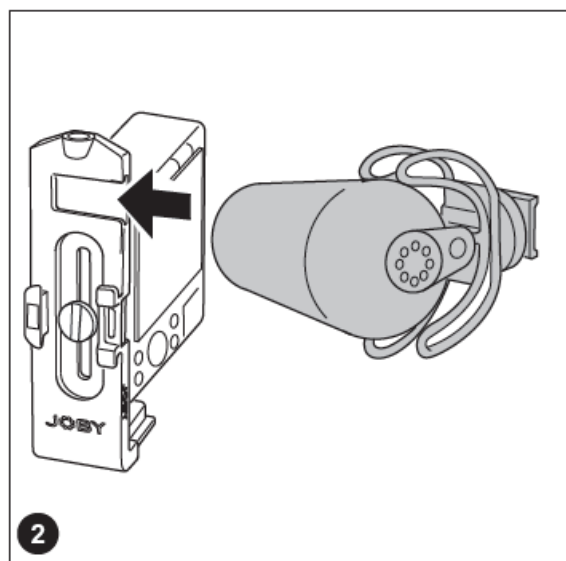
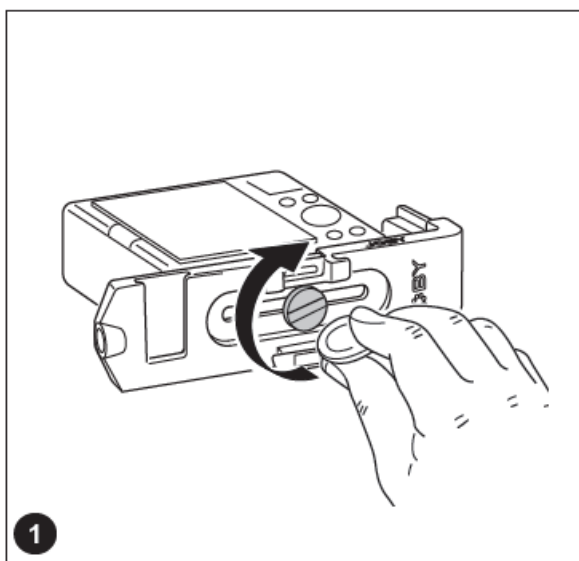
1. Ensure that the Vert is turned on by pressing and holding the power button.
2. Enable Bluetooth on your smartphone or device.
3. In the Bluetooth settings, search for available devices.
4. Select “Joby Vert” from the list of available devices.
5. Follow any additional on-screen prompts to complete the pairing process.
6. Once paired, the Vert will be connected to your device, and you can start using it.

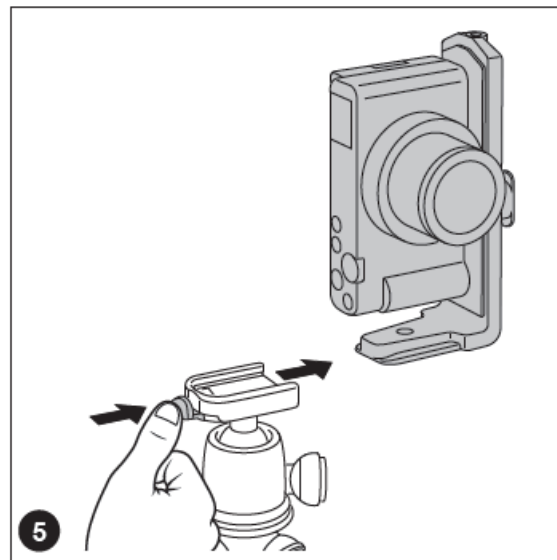
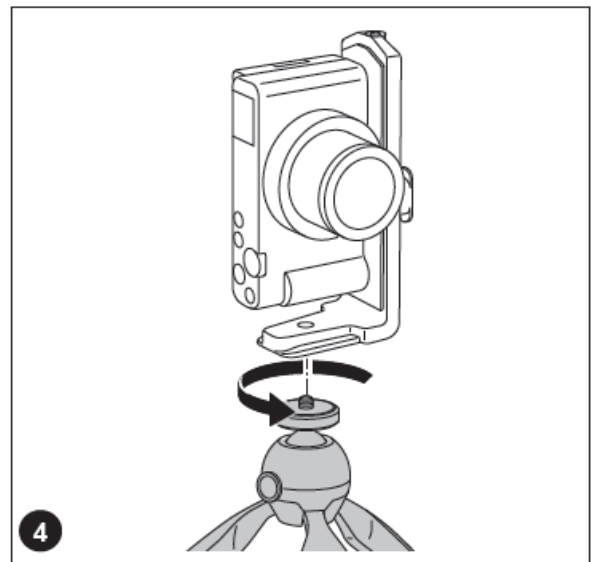
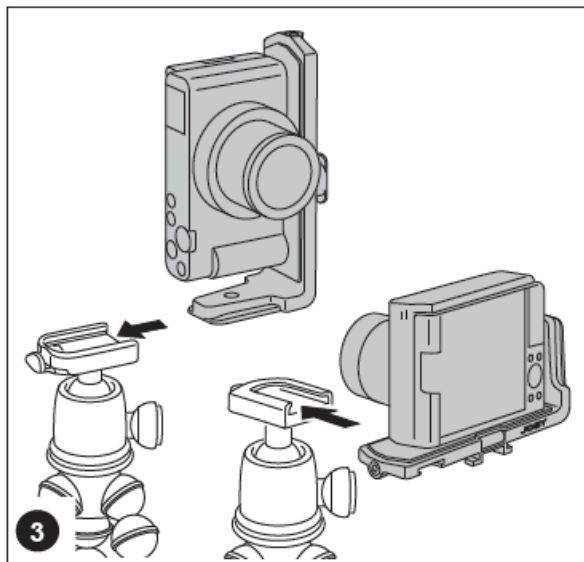
Using the Joby Vert

The Joby Vert is a versatile product with multiple functions. Here are some common usage instructions:

- To turn on/off the Vert, press and hold the power button for a few seconds.
- To adjust the volume, use the volume controls located on the side of the device.
- To play/pause music or answer/end calls, press the multifunction button located on the front of the device.
- For advanced features and specific functions, refer to the user manual included with the product.

INSTALLATION





Frequently Asked Questions

How long does the battery of the Joby Vert last?

The battery life of the Joby Vert depends on various factors such as usage, volume level, and connectivity. On average, it can last up to 8 hours on a full charge

Can I use the Joby Vert while it is charging?

Yes, you can use the Joby Vert while it is charging. However, please note that the charging time may be longer if the device is in use

Is the Joby Vert water-resistant?

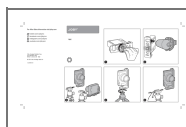
The Joby Vert is not water-resistant. Avoid exposing it to water or any liquids to prevent damage

For After Sales Information visit [joby.com](https://www.joby.com)

- twitter.com/jobyinc
- facebook.com/jobyinc
- instagram.com/jobyinc
- youtube.com/jobyinc



Vitec Imaging Solutions Spa Via Valsugana 100 36022 Cassola (VI) – Italy
© 2021 Vitec Holdings Italia Srl
Cod.0500-222

Documents / Resources



[JOBY Vert Vertical L Bracket](#) [pdf] Instruction Manual
Vert, Vert Vertical L Bracket, Vertical L Bracket, Bracket

References

-  [JOBY \(@jobyinc\) • Instagram photos and videos](#)
-  [Tripods for Phone, Camera & Tablet | JOBY](#)
- [User Manual](#)

[Manuals+](#), [Privacy Policy](#)

This website is an independent publication and is neither affiliated with nor endorsed by any of the trademark owners. The "Bluetooth®" word mark and logos are registered trademarks owned by Bluetooth SIG, Inc. The "Wi-Fi®" word mark and logos are registered trademarks owned by the Wi-Fi Alliance. Any use of these marks on this website does not imply any affiliation with or endorsement.