

JOBY®

JB01473-

**BWW Impulse
Camera
Control**



JOBY JB01473-BWW Impulse Camera Control User Guide

[Home](#) » [JOBY](#) » JOBY JB01473-BWW Impulse Camera Control User Guide 

Contents

- [1 JOBY JB01473-BWW Impulse Camera Control](#)
- [2 Specification](#)
- [3 Battery](#)
- [4 Connect](#)
- [5 SAFETY INSTRUCTIONS](#)
- [6 FCC](#)
- [7 Documents / Resources](#)
 - [7.1 References](#)
- [8 Related Posts](#)

JOBY®

JOBY JB01473-BWW Impulse Camera Control

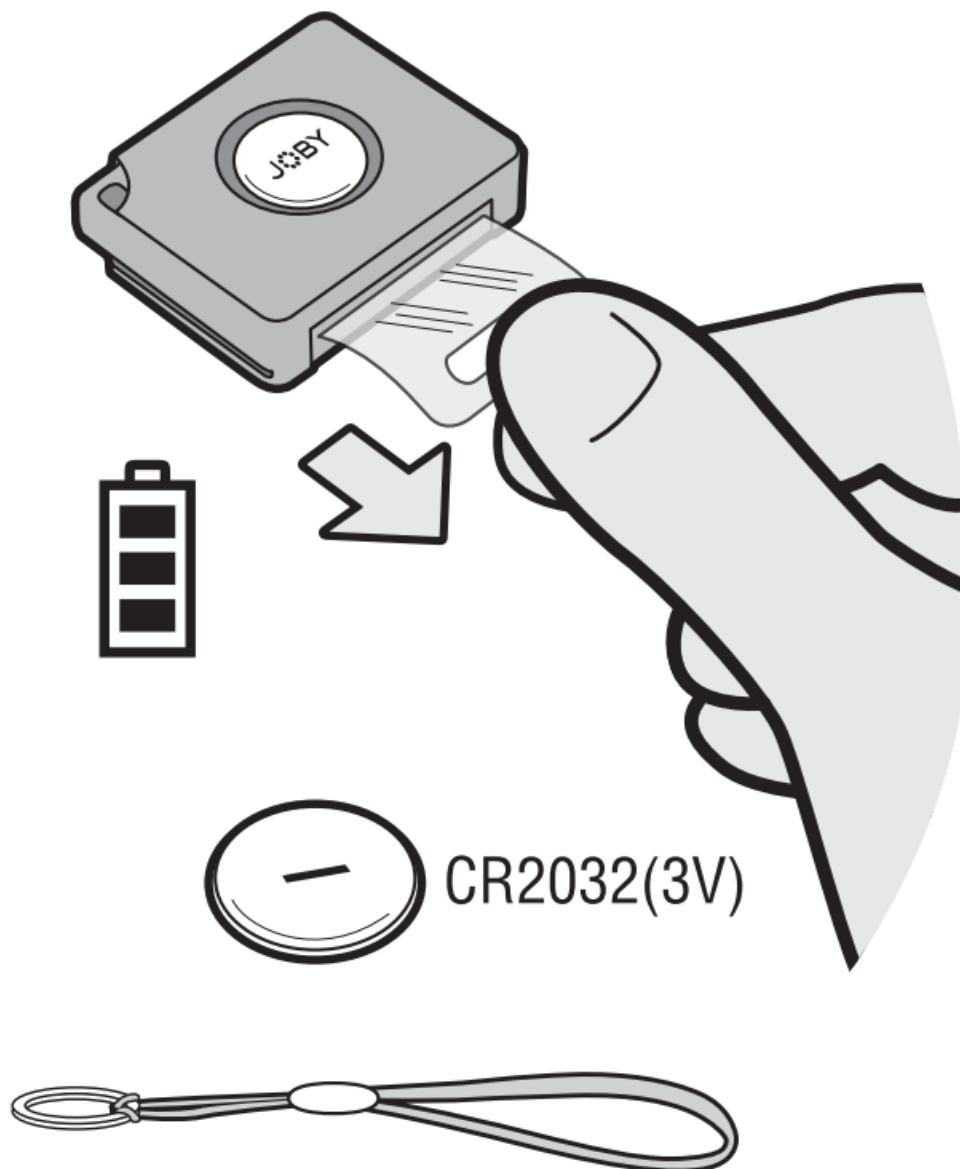


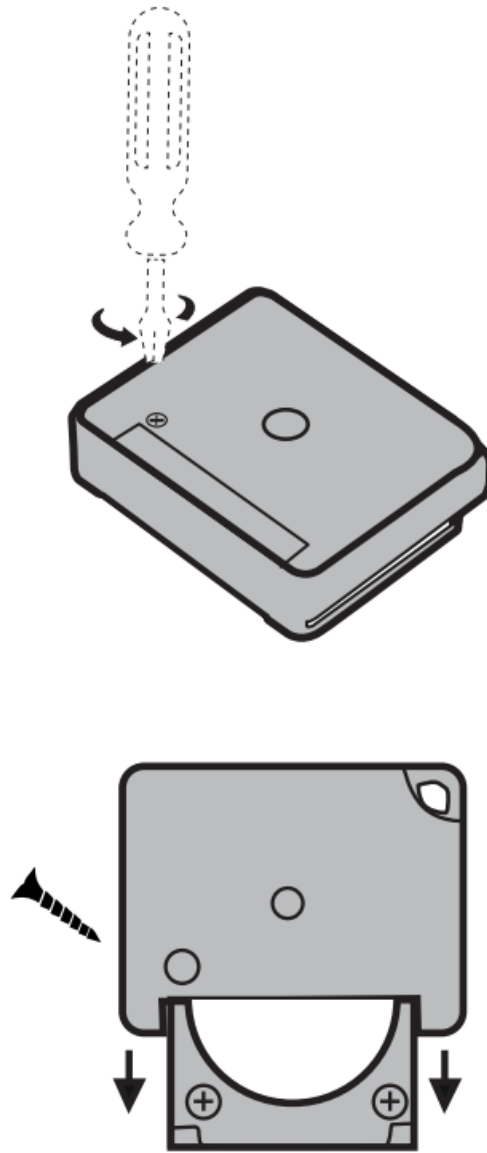
Upgrade your mobile photography and take the ultimate selfies.
Trigger your phone's camera from up to 90 feet away with this universal remote for smartphones.

Specification

- **Battery:** 220mAh Manganese Dioxide Lithium Battery
- **Bluetooth:** Bluetooth 3.0 / 2.4 GHz
- **Operation temp:** -20 to +40°C
- **Output Power:** -1.5 dBm

Battery





Connect

Pairing for the first time

1. Turn 'on' Bluetooth on your device.
2. Press and hold the JOBY button until the LED light flashes.
3. Select 'JOBY Shutter' in Bluetooth settings.

Taking photos Open the camera app and press the JOBY button.

To turn it off, press and hold the JOBY button until the LED light flashes. Power will automatically shut off if idle for 10 minutes.

Deleting and re-pairing to a different device From off, press and hold the JOBY button for 2 seconds. Go to Bluetooth settings on your device and remove the 'JOBY Shutter.'

SAFETY INSTRUCTIONS

- Risk of explosion if the battery is replaced by an incorrect type.
- The included battery is not rechargeable.
- Please use the battery in its original purpose to avoid causing the battery to short circuit. When the conductive

material is connected directly to the battery positive and negative will cause a short circuit.

- Do not use a damaged battery.
- Keeping the battery in an extremely cold or very hot location can result in a shortened battery life.
- When replacing the battery, please refer to the instruction manual and pay attention to the positive and negative directions of the battery.
- Do not put the battery in the fire. Dispose of the battery according to local regulations.

WARNING



- **INGESTION HAZARD:** This product contains a button cell or coin battery.
- **DEATH** or serious injury can occur if ingested.
- A swallowed button cell or coin battery can cause Internal Chemical Burns in as little as 2 hours.
- **KEEP** new and used batteries **OUT OF REACH** of **CHILDREN**.
- Seek immediate medical attention if a battery is suspected to be swallowed or inserted inside any part of the body.
- Remove and immediately recycle or dispose of used batteries according to local regulations and keep away from children. Do **NOT** dispose of batteries in household trash or incinerate.
- Even used batteries may cause severe injury or death.
- Call a local poison control center for treatment information.
- Do not force discharge, recharge, disassemble, heat above 40°C/104°F or incinerate. Doing so may result in injury due to venting, leakage or explosion resulting in chemical burns.
- Do not mix old and new batteries, different brands or types of batteries, such as alkaline, carbon-zinc, or rechargeable batteries.
- Remove and immediately recycle or dispose of batteries from equipment not used for an extended period of time according to local regulations.
- Always completely secure the battery compartment. If the battery compartment does not close securely, stop using the product, remove the batteries, and keep them away from children.

FCC

This device complies with Part 15 of the FCC Rules. Operation is subject to the following two conditions:

1. this device may not cause harmful interference, and
2. this device must accept any interference received, including interference that may cause undesired operation.

Please note that changes or modifications not expressly approved by the parts responsible for compliance could void the user's authority to operate the equipment.

Note: This equipment has been tested and found to comply with the limits for a Class B digital device, pursuant to Part 15 of the FCC Rules.

These limits are designed to provide reasonable protection against harmful interference in a residential installation. This equipment generates, uses, and can radiate radio frequency energy and, if not installed and used in accordance with the instructions, may cause harmful interference to radio communications. However, there is no guarantee that interference will not occur in a particular installation. If this equipment does cause harmful interference to radio or television reception, which can be determined by turning the equipment off and on, the user is encouraged to try to correct the interference by one or more of the following measures:

- Reorient or relocate the receiving antenna.
- Increase the separation between the equipment and receiver.
- Connect the equipment into an outlet on a circuit different from that to which the receiver is connected.
- Consult the dealer or an experienced radio/TV technician for help.

Hereby, Videndum Media Solutions Spa declares that the Impulse radio equipment is in compliance with Directive 2014/53/EU. The full text of the EU declaration of conformity is available at the following internet address:

joby.com/certification.

Notice to Canadian users

This device complies with Industry Canada license-exempt RSS standard(s). Operation is subject to the following two conditions:

1. This device may not cause interference, and
2. This device must accept any interference, including interference that may cause undesired operation of the device.

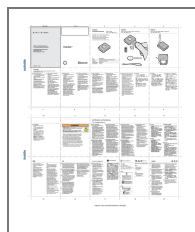
This device complies with RSS 247 of Industry Canada. Operation is subject to the condition that this device does not cause harmful interference.

This Class B digital apparatus complies with Canadian ICES 003.

Complies with the European Union's "Restriction of Hazardous Substances Directive," which protects the environment by restricting specific hazardous materials and products.

JOBY is a registered trademark of Videndum Media Solutions Spa
Videndum Media Solutions Spa
Via Valsugana 100
36022 Cassola (VI) – Italy

Documents / Resources



[JOBY JB01473-BWW Impulse Camera Control](#) [pdf] User Guide

JB01473-BWW Impulse Camera Control, JB01473-BWW, Impulse Camera Control, Camera Control, Control

References

- [User Manual](#)

This website is an independent publication and is neither affiliated with nor endorsed by any of the trademark owners. The "Bluetooth®" word mark and logos are registered trademarks owned by Bluetooth SIG, Inc. The "Wi-Fi®" word mark and logos are registered trademarks owned by the Wi-Fi Alliance. Any use of these marks on this website does not imply any affiliation with or endorsement.