



## jlrgear CL-671 Touch Lamp Portable Bluetooth Speaker Instruction Manual

[Home](#) » [jlrgear](#) » jlrgear CL-671 Touch Lamp Portable Bluetooth Speaker Instruction Manual

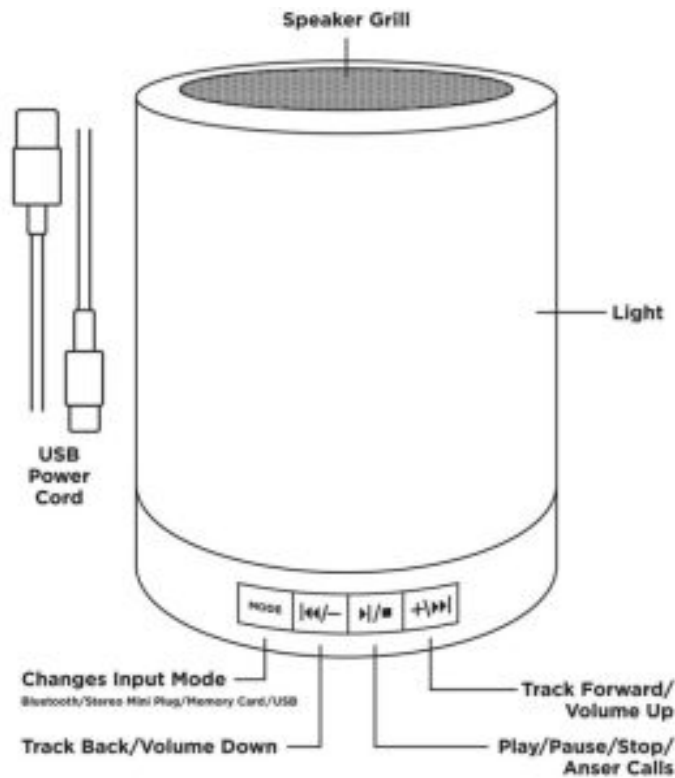


Wireless Color Changing  
Touch Light Speaker  
Product Instruction Manual  
Please read carefully prior to use.

Includes wireless Touch Light Speaker and USB charging cable  
Lights up and plays music from any Bluetooth compatible device



Please call customer service at 1-800-254-0111 with any questions



**Care Tip:** If the speaker needs cleaning, wipe it using a soft dry cloth. Never use any abrasive cleaning agents. Periodically wipe off accumulated dust.

## Contents [ [hide](#) ]

### [1 Features](#)

### [2 Documents / Resources](#)

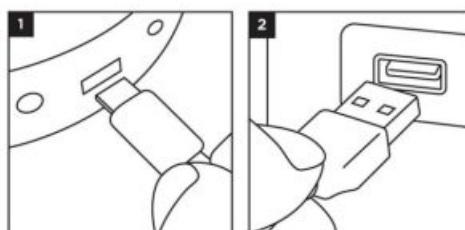
### [3 Related Posts](#)

## Features

- Wirelessly connects to any Bluetooth® compatible device for playing all your favorite tunes
- Touch LED illumination changes colors and light modes when the speaker grill is pressed
- Multiple modes for constant, flash, fade, dimmer control, and rhythm mode that moves with the music
- Integrated microphone for hands-free calls and voice service control
- USB rechargeable battery
- Built-in TF memory card reader, track control panel, mini plug auxiliary input, and utility hanging hook

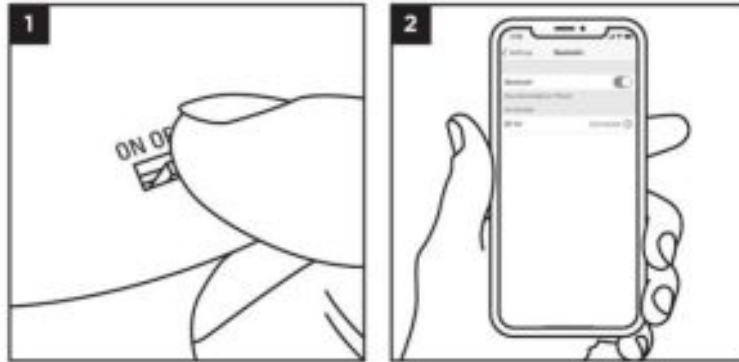
## Before First Use

We recommend fully charging the battery upon purchase of your new speaker before using it for the first time.



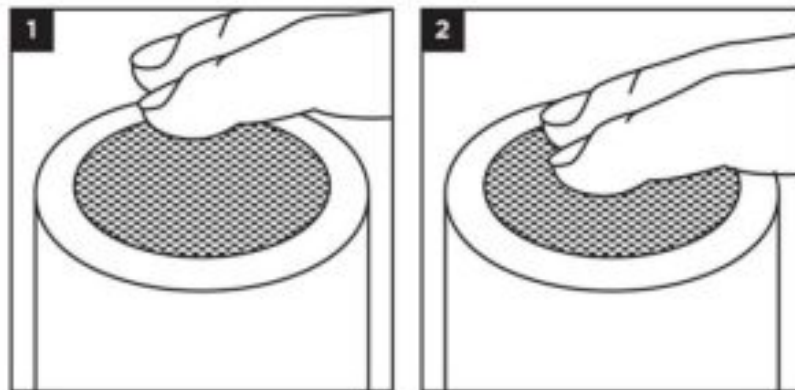
## Charging the Speaker

1. Plug the included USB cable into the micro USB charging port located on the bottom backside of the speaker.
  2. Plug the other end of the USB cable into any other USB power source and allow it to charge for several hours.  
The power light LED will illuminate red during the charging phase. Unplug the speaker when it is ready for use.
- Note:** The speaker can also be used while plugged into the USB power cord for long-lasting use without draining the battery.



## Powering On and Connection to your Device

1. Flip the switch on the back of the speaker to the ON position to power on.
2. Open the Bluetooth™ settings on your device and select the speaker option from the devices listed on your screen. An audible sound will be heard once successfully paired with your device.

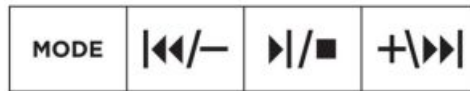


## Controlling the Light

1. To control the brightness of the light, simply tap the speaker grill on the top of the light to cycle through the low, medium, and high light settings.
2. To change the color and mode of the light, tap and hold your fingers on the speaker grill to enter color mode. Once in color mode, tap the speaker grill to cycle through all the colors and modes. Tap and hold the speaker grill once again to return to the dimmable white light mode.

## Control Panel Functions

The speaker features an integrated control panel to control your music right from the speaker. See below for control functions.

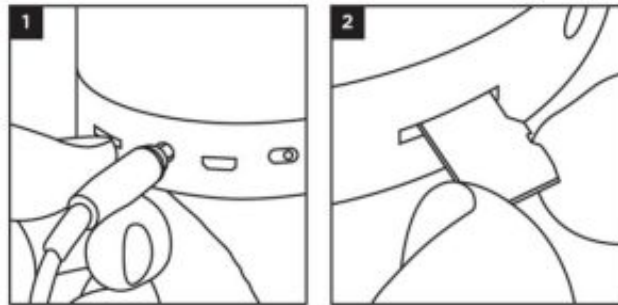


**MODE-** Changes from Bluetooth, AUX, USB, and Micro SD card inputs. The Button Can also be used to enter Bluetooth pairing mode to connect to your device.

**TrackBack and Volume Down–** Press to go back to the previous music track and hold to turn the volume down.

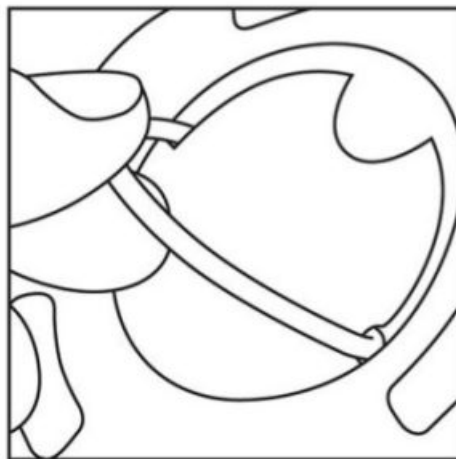
**Play/Stop/Answer–** Press to play and pause your music track or answer a call.

**Track Forward and Volume Up–** Press to go forward to the next music track and hold to turn the volume up.



### Using Alternate Inputs

1. To use the auxiliary or USB inputs on the speaker, plug the cord into the back of the speaker and connect to your device to play music.\*
  2. To use the memory card input, insert a compatible SD memory card with music into the slot. Use the controls on the speaker to control the playback of the music. Press mode to go back to AUX, USB, or Bluetooth input options.”
- Stereo mini-plug cable and USB connection cable not included. SD memory card not included.



### Using the Hanging Bracket

To use the hanging bracket, flip out the D-ring from the bottom of the speaker. Hang the loop in the desired location to enjoy music and light anywhere you go. Flip the bracket back into the stored position when complete.

### WARNING! IMPORTANT CARE AND SAFEGUARDS

Failure to follow the safety instructions can lead to fire, electrical shock, personal injury, or property damage and damage to this product.

- Do not use the speaker for anything other than its intended use
- If you have an electrical device, such as a pacemaker, consult a physician before using this product
- Always use the specified power source and voltage
- Do not use a voltage converter/travel adapter
- This product contains small parts and is not suitable for children
- Do not expose this product to rain, water, or excessive humidity
- If the speaker bank becomes wet, discontinue use until completely dry
- Keep the speaker away from heat sources and direct sunlight
- Always use this product in operating temperatures of 32°F (0°C) 95°F (35°C)
- Do not handle the speaker, USB power cord, or power source with wet hands
- Do not let dust or other things accumulate on the product and power cord
- Do not use the speaker if it has been dropped or damaged in any way
- Never take this device apart and always get repaired by a qualified technician

#### FCC Disclaimer

This device complies with part 15 of the FCC Rules. Operation is subject to the following two conditions: (1) This device may not cause harmful interference, and (2) this device must accept any interference received, including interference that may cause undesired operation.

**NOTE:** THE MANUFACTURER IS NOT RESPONSIBLE FOR ANY RADIO OR TV INTERFERENCE CAUSED BY UNAUTHORIZED MODIFICATIONS TO THIS EQUIPMENT. SUCH MODIFICATIONS COULD VOID THE USER AUTHORITY TO OPERATE THE EQUIPMENT.

#### SAVE THESE INSTRUCTIONS FOR FUTURE REFERENCE

Any questions, please call customer service at 1-800-254-0111 2612  
 Barrington Court, Hayward,  
 CA 94545 8:30 am – 5 pm, PST. Monday  
 Friday, or email us at [customerservice@firgear.com](mailto:customerservice@firgear.com)  
 © 2021 JLR Gear – Made in China

#### Documents / Resources



[jlrgear CL-671 Touch Lamp Portable Bluetooth Speaker](#) [pdf] Instruction Manual  
 STG6741TG, 2A2AR-STG6741TG, 2A2ARSTG6741TG, CL-671 Touch Lamp Portable Bluetooth Speaker, Touch Lamp Portable Bluetooth Speaker