

 **JLAB**  
**STUDIO2**  
**Wireless**  
**Headset**



# JLAB STUDIO2 Wireless Headset Owner's Manual

[Home](#) » [JLab](#) » JLAB STUDIO2 Wireless Headset Owner's Manual 

## Contents

- 1 JLAB STUDIO2 Wireless Headset
- 2 BLUETOOTH
- 3 CONTROLS
- 4 Documents / Resources
  - 4.1 References



**JLAB STUDIO2 Wireless Headset**



#### **YOUR WARRANTY**

- All warranty claims are subject to JLab authorization and at our sole discretion. Retain your proof of purchase to ensure warranty coverage.



#### **CONTACT US**

- Reach out to us at [support@jlab.com](mailto:support@jlab.com) or [visitjlab.com/contact](https://www.jlab.com/contact)

#### **REGISTER TODAY**

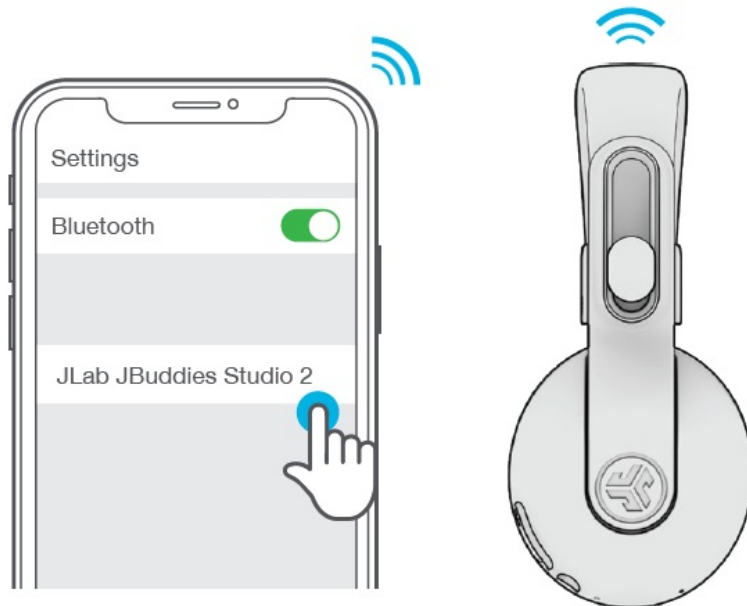
[jlab.com/register](https://www.jlab.com/register) Product updates | How-to tips FAQs & more

#### **BLUETOOTH**



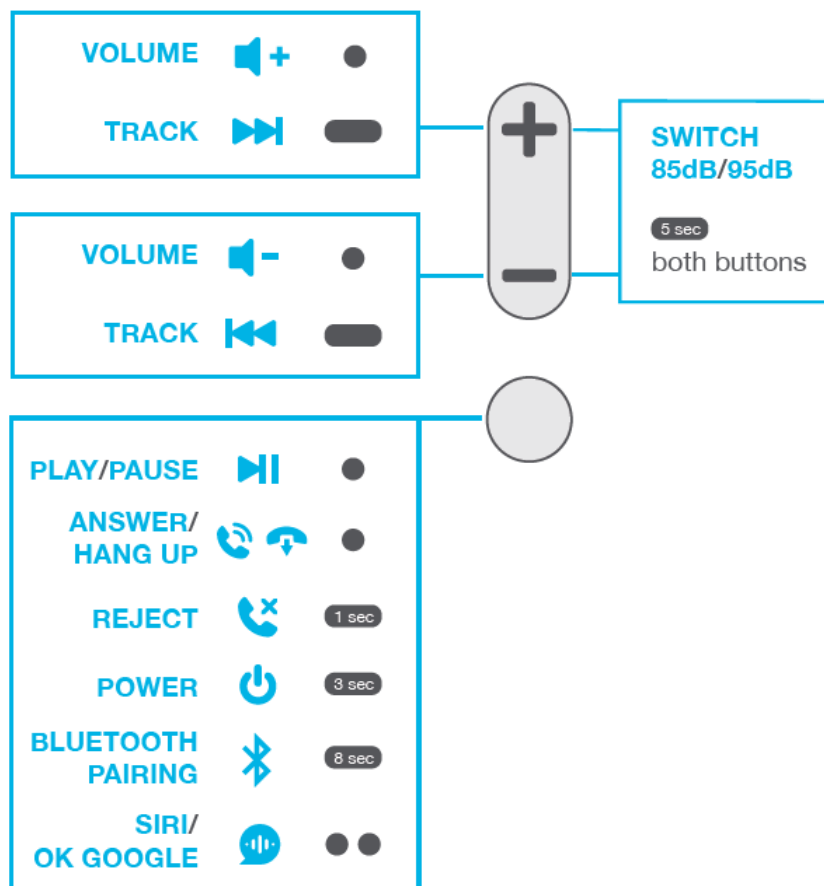
Press and hold button  
for **8 seconds**. Release.  
Lights will **flash blue/red**.

- Enter your Bluetooth device settings and select JLab JBuddies Studio 2.



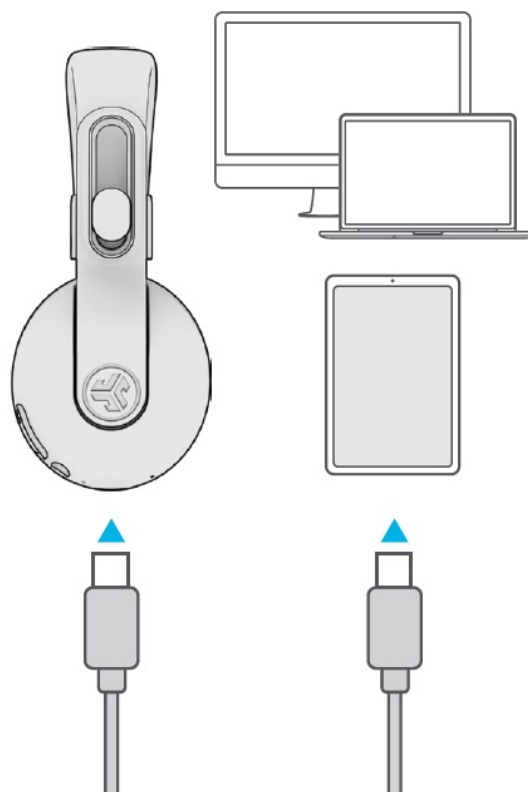
## CONTROLS

- 1x Press
- 2x Press
- Press Hold

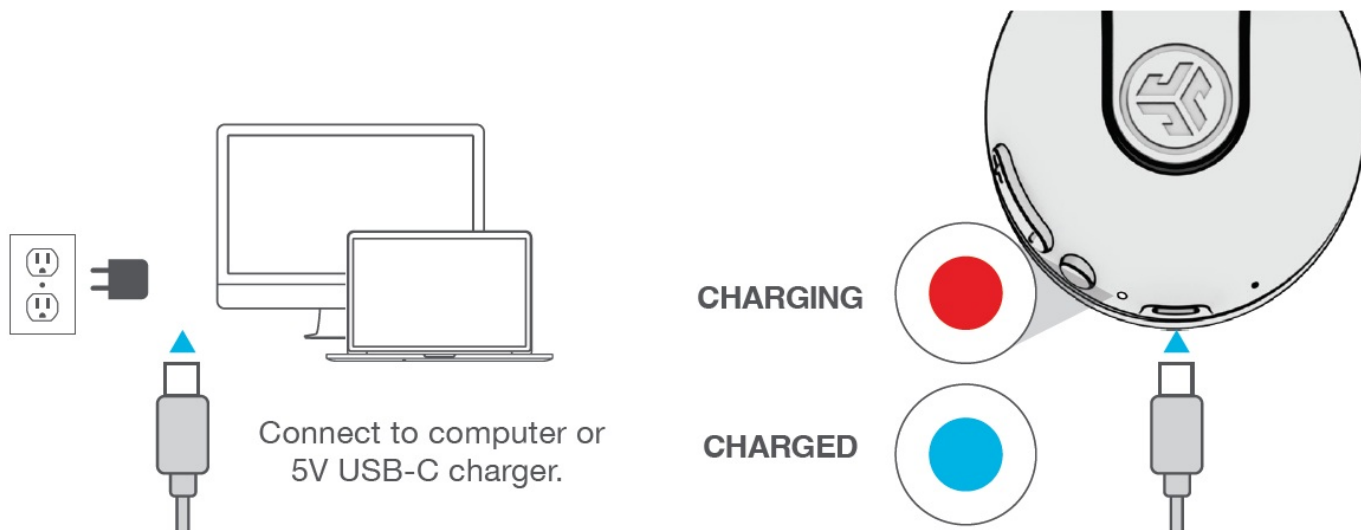


## GO WIRED

- Connect USB-C cable to computer/tablet/phone for wired mode.

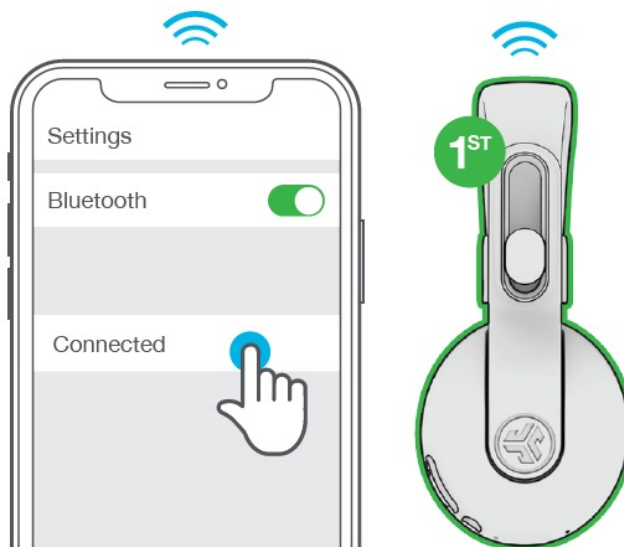


## CHARGING

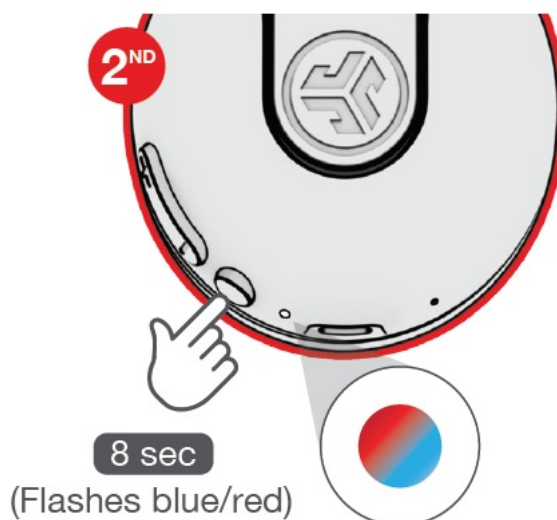


### SHARE MODE (SHARE BETWEEN TWO JBuddies Studio 2 Wireless Headphones)

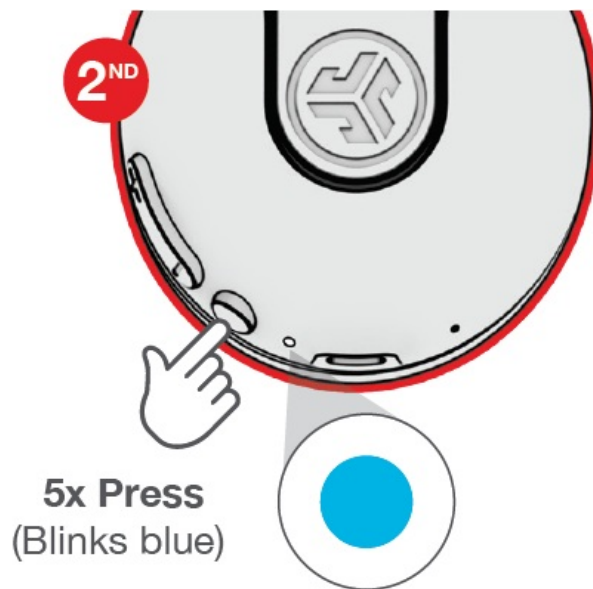
1. Connect the FIRST headphone to the device. 2



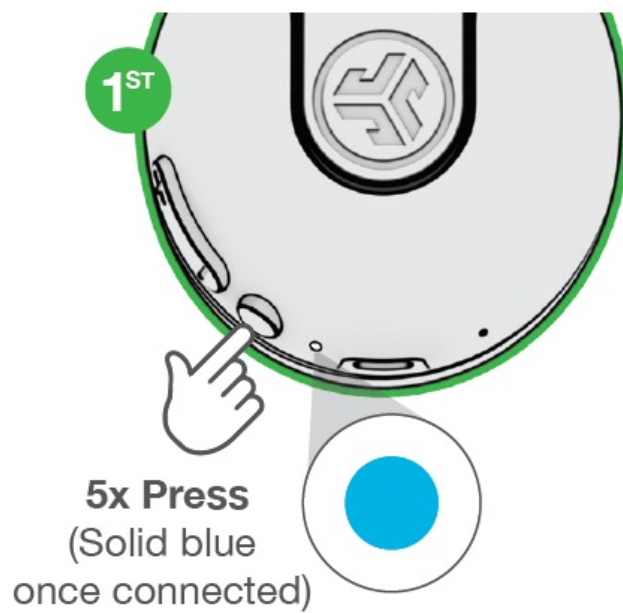
2. SECOND headphones should be powered off.



3. Press hold until flashing blue/red.



4. FIRST headphones 5x Press to share.



Shop products | Product alerts | Burn-in your headphones

- JLab Audio + Burn-in Tool



[JLAB.COM](https://www.jlab.com)

## Documents / Resources

	<a href="#">JLAB STUDIO2 Wireless Headset</a> [pdf] Owner's Manual 2AHYV-STUDIO2, 2AHYVSTUDIO2, STUDIO2 Wireless Headset, STUDIO2, Wireless Headset , Headset
--	--

## References

- [User Manual](#)

[Manuals+](#), [Privacy Policy](#)

This website is an independent publication and is neither affiliated with nor endorsed by any of the trademark owners. The "Bluetooth®" word mark and logos are registered trademarks owned by Bluetooth SIG, Inc. The "Wi-Fi®" word mark and logos are registered trademarks owned by the Wi-Fi Alliance. Any use of these marks on this website does not imply any affiliation with or endorsement.