



JLAB GO Wireless Mouse User Guide

[Home](#) » [JLab](#) » JLAB GO Wireless Mouse User Guide 



We love that you are rocking JLab!
We take pride in our products and fully stand behind them.



YOUR WARRANTY

All warranty claims are subject to JLab authorization and at our sole discretion. Retain your proof of purchase to ensure warranty coverage.



CONTACT US

Reach out to us at support@jlab.com or visit jlab.com/contact

REGISTER TODAY

jlab.com/register

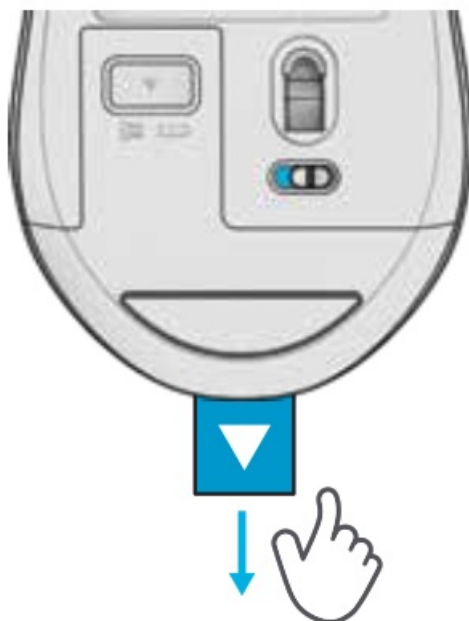
Product updates | How-to tips FAQs & more

Contents

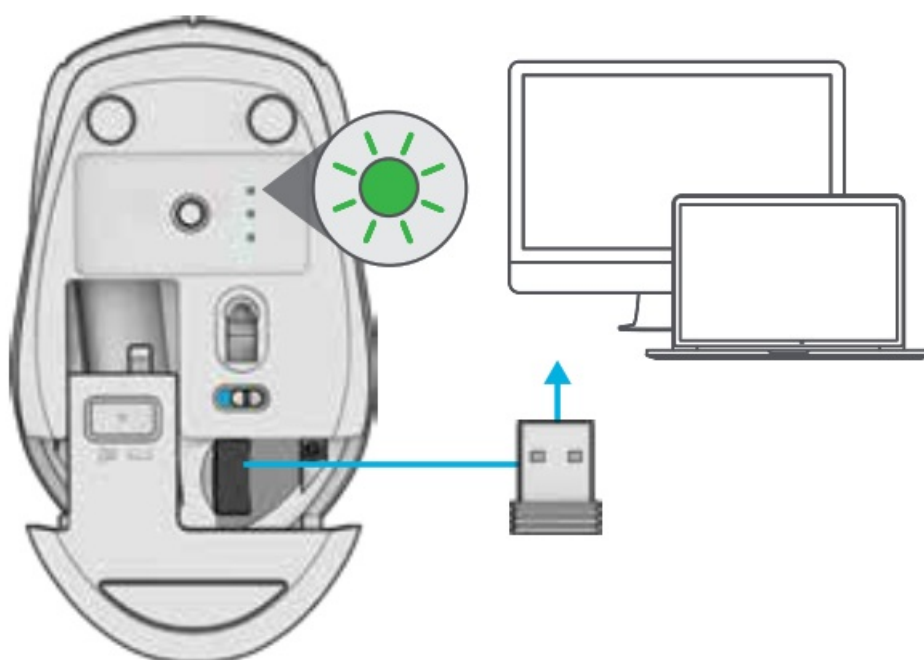
- [1 GO MOUSE](#)
- [2 GO CHARGE MOUSE](#)
- [3 Documents / Resources](#)
 - [3.1 References](#)
- [4 Related Posts](#)

GO MOUSE

1. SETUP



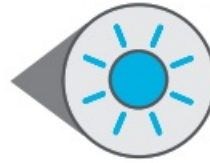
2. 2.4 CONNECTION



3. CONNECTION



**PAIRING
MODE:**
Flashing

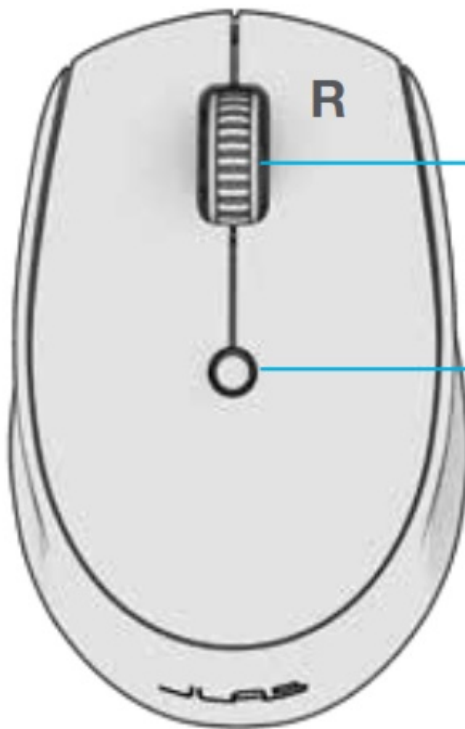


PAIRED:
Solid then off

QUICK PRESS
to switch connection

PRESS AND HOLD
for Pairing Mode
(Search for GO Mouse in
device settings to connect)

INTERFACE



Scroll + Middle Button

DPI Button:
Toggle mouse
sensitivity:
800/Low
1200/Medium
1600/High

Have a JLab Go Keyboard?

Scan the QR code to learn how to pair both your devices with just one dongle.



<https://qrco.de/bdUL1Y>

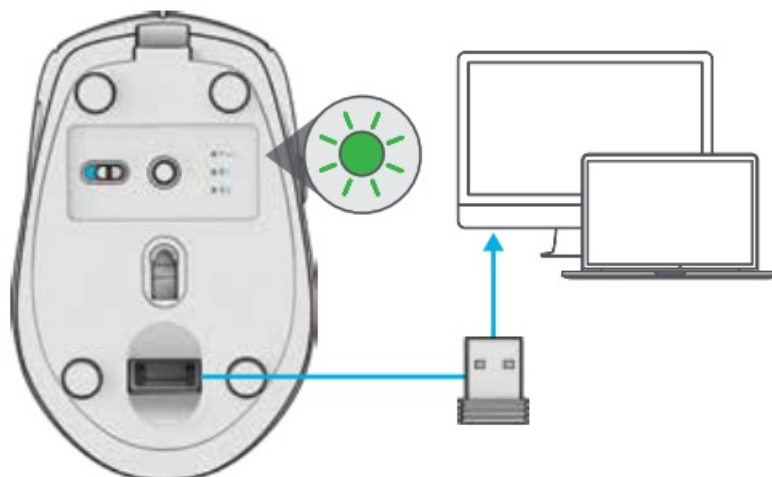
GO CHARGE MOUSE

1. SETUP

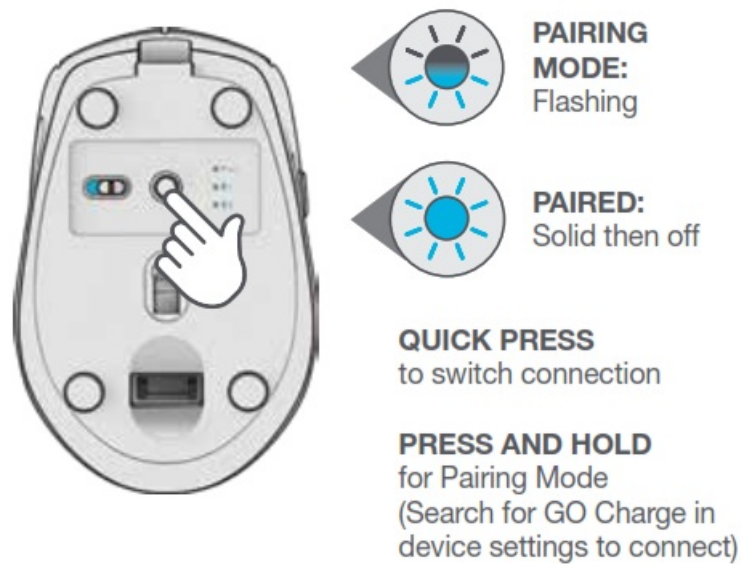
Switch GO Charge ON.
Plug in if charging is needed.



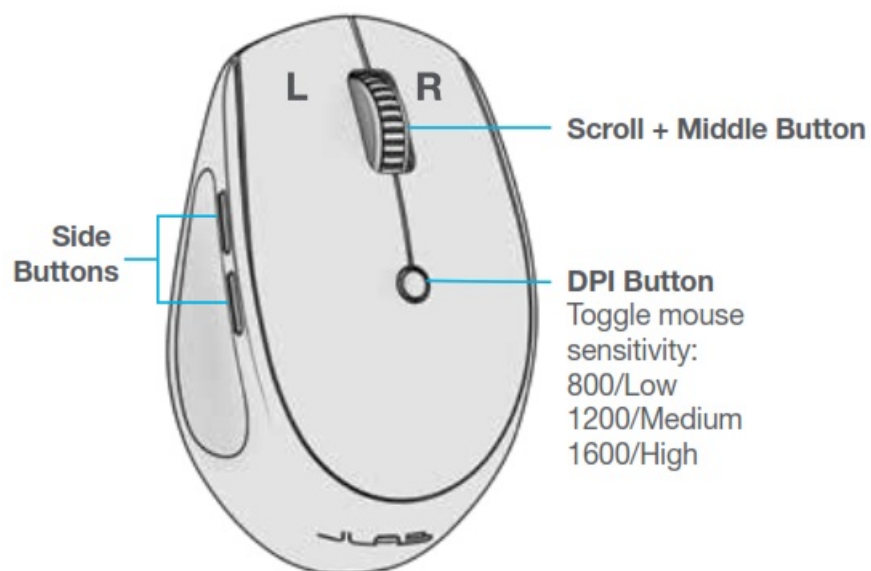
2. 2.4 CONNECTION



3. CONNECTION



INTERFACE



Have a JLab Go Keyboard?

Scan the QR code to learn how to pair both your devices with just one dongle.





Shop products | Product alerts | Burn-in your headphones
JLab Store + Burn-in Tool



[JLAB.COM](https://www.jlab.com)

Documents / Resources

	<p>JLAB GO Wireless Mouse [pdf] User Guide</p> <p>GO Mouse, GO Charge Mouse, GO Wireless Mouse, GO, Wireless Mouse, Mouse</p>
--	---

References

- [🔗 JLab: True Wireless Headphones, Earbuds, Microphones, Personal Audio](#)
- [🔗 Contact Us – JLab](#)
- [🔗 Register Your Product – JLab](#)

[Manuals+](#).